



'Screentime is boring.. when you can climb!'



**'The Kids
Climbing
Specialists'**



Mock Rock
Unit 4
Manchester House
Pinxton
NG16 6JN

www.Mockrock.co.uk

Email Sales@mockrock.co.uk
Phone 07527 527 247
Facebook : Mock rock Climbing
Instagram : MockRockUK

Sales@Mockrock.co.uk
UK 07527 527 247



UK wide climbing
wall installations ✓

Climbing hold
manufacturer ✓

Murals ✓

Safety-Surfacing ✓

Established in 2005

Mock Rock are the kids climbing wall specialists.
Since 2005 we've installed over 2500 Climbing walls and traverse walls.

It all started after a summer living in the Lake District and noticing indoor climbing was so different to outdoors we invented the mock rock climbing hold ; exact copies of real rocks for the indoor wall.

Our aim is to get children enjoying the outdoors by making it more exciting than screen time.

We have developed a system of rubber-backed climbing holds that can fit on to any surface, *even the roughest stone wall*, this reduces the cost of an installation and has an impressive minimum 10 year lifespan.

Getting into climbing can be daunting so we want to break that barrier with friendly clear advice.

Contact us with any questions and we will endeavour to respond the same day.

Ben Hunter

Director Mock Rock

Climbing

Climbing boosts confidence and gets children interested in solving technical challenges.

Kids who do not enjoy team sports often excel at climbing, because it is not always the physically strongest or biggest that are the best climbers, but those who innovate and persevere.

Timesaving Popular Products Prices at a glance ✓

Popular products Price page
Page 1



Activity days at your school
Page 2



Traverse walls on to masonry
Pages 3-6



Traverse walls with murals
Pages 7-12



Free-Standing traverse walls
Pages 11-13



School Make overs
Pages 13-14



Bulk climbing holds
Page 16



Timesaving Popular Products Prices at a glance

70 climbing hold traverse wall to existing masonry **£1540**
(5-7 linear metres of wall)



As above but with a handpainted mural **£3100**



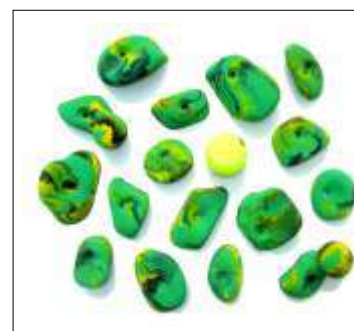
Free-standing single sided traverse wall **£3900**
(4.2 Metres wide climbing on one side)



Free-standing **double** sided traverse wall **£4100**
(4.2 Metres wide but with climbing on both sides)



Bolt on climbing holds/rubber backed safety grips
£3.50 each (minimum order x1000)



Screw on climbing holds **£2.25** each
(minimum order x1000)



Sales@Mockrock.co.uk
UK 07527 527 247

Outdoor activity days at your school



Activity and training days at your school from £20 per child



We package this as a fun day but we have a serious goal to teach..

- Safe climbing techniques
- Self reliance
- Planning & survival
- Sustainable living

To Enjoy the outdoors

Courses

All of our courses and activities are fun and exciting, and are specifically designed to develop individual skills and promote team work. The activities can be adapted to suit a range of age groups and ability levels, whilst incorporating your own learning objectives. We have run team building for Key Stage 2 all the way up to 6th Form students. Our school camps are suitable for Year 2 to Year 6 and our residentials are jam packed full of fun and adventure for Year 5 to 6th Form! We are also happy to work with you to develop a course which meets your own objectives or links to the curriculum.

Climbing Skills

If you've had one of our traverse / climbing wall installations we offer climbing skills training sessions where we demonstrate games, challenges and safety.

Bushcraft

Survival skills and nature appreciation with a strong emphasis on sustainable living. Our bushcraft activities all have one thing in common... Can your pupils develop a sense of self-sufficiency by trying out fire lighting, shelter building, natural navigation, water purification and much more. Our bushcraft instructors have used these skills on expeditions throughout the world and love to impart their knowledge to any budding young adventurer. Bushcraft can be run as a separate day or combined with any of our other courses.

Team Building

Working together to solve problems. Our team building days offer a chance for pupils to learn how to effectively work together with others, develop positive communication skills and to see how well they can lead a team. We provide a range of problem solving challenges which will test their abilities and lead them to success!

Our instructors will help pupils discover their strengths and apply them to the challenges.

Archery

Our qualified instructors are experienced in safely coordinating Archery introduction sessions for all age groups. We are based in Nottingham a certain famous Archer comes from

School camp

We bring the tents and tailor make an experience for your school which can include cook your own food, hot chocolates and camp fire



Traverse walls on to masonry



Traverse walls are low level climbing walls which do not require safety surfacing

Climbing holds are never placed higher than 2 metres from the ground with footholds below 40cm



Traverse walls on to masonry

Traverse walls on to masonry

The most cost effective way to install a traverse wall is to fix direct to masonry. We are the only manufacturer of climbing holds that can safely be attached to uneven stone walls. Our safety climbing holds were designed for bricks where as most traditional climbing grips were made to be fixed to flat plywood boards in a climbing centre.

We have installed over 1 million climbing holds using our unique safety climbing holds.



Technical Specification

- A minimum of three different colour/grade challenges. Green easy, Blue medium and red hard.
- Grade 10.9 Hardened steel bolts
- Rubber-backed safety holds (made in our Nottingham workshop)
- Climbing holds can be re-positioned with the provided allen key tool.
- Little to no maintenance.
- 7 year guarantee (an industry best)
- CE approved anchor system.
- UV stabilized pigments used throughout.

We installed a traverse wall 2 years ago at Jasmine's school, now she is competing in climbing competitions. A traverse wall is the ideal first step to safely learn climbing techniques. Because the footholds are below 60cm no safety matting is legally required.



"She's so strong it's ridiculous!" Jasmine's mum

Prices traverse walls direct to masonry



Thank you, Mock Rock!

We have just had our wonderful traversing wall fitted. The children LOVE it and the whole process was made really easy and straight forward by Ben from MockRock. We emailed a picture of our wall to him with measurements and he gave a quote by return and confirmed that the wall was suitable for a traversing wall. Because the wall is only inches from the ground, no safety surface is required. Fitting the wall took less than a day. I am Head of two small rural primary schools and this is the second time I have used MockRock to fit a Traversing Wall. The first wall is now seven years old, used by up to 120 children per day, and still as good as new. If you are thinking of improving your playground, I can't recommend a traversing wall from MockRock highly enough.

Thank you Mock Rock Headteacher Clipstone CE school



Direct to masonry prices without safety-surfacing - More options next page

Length	Number of Climbing holds	Installed Price
2-4 Metres	50 Climbing Holds	£1250
5-7 Metres	70 Climbing Holds	£1540
8-12 Metres	100 Climbing Holds	£2200

Future Proof

Our climbing holds are guaranteed for 7 years but if you want to replace them with new ones to create brand new challenges we offer a quick service option. Because we use the existing fixing points this is a low cost revamp.

£450 - 50 New climbing holds and safety inspection

£550 - 70 New climbing holds and safety inspection

£650 - 100 New climbing holds and safety inspection

Prices for direct to masonry With safety-surfacing

The process

We try to keep our fuel consumption down to a minimum by carrying only what is necessary to complete the job, in order to do this we need the following information.

- Age range using the traverse wall? We can adjust the heights accordingly
- length of traverse wall you require
- Are there any obstructions such as drain pipes? We make a high quality drain pipe cover
- Email a picture of the proposed wall to sales@mockrock.co.uk
- Is there power available or should we bring a generator?
- Is it ok to drill for 1-2 hours during school time? If not can we drill after 3.30pm and complete the installation over 2 days with only quiet work during school hours. We are always considerate and if you specify quiet times such as during assembly we will adhere to them.
- Is there access for a vehicle near to the area of work? This does not stop an installation it just means we pack some heavy duty trolleys.

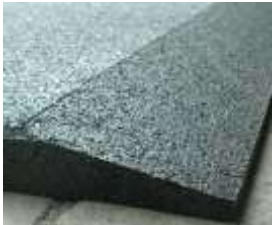


UK Made ramped edge safety tiles are ideal for quick safe installations and require no heavy machinery onsite. Unlike wet-pour rubber installations they can be easily replaced in case of any damage so have an extremely low cost across their lifespan.

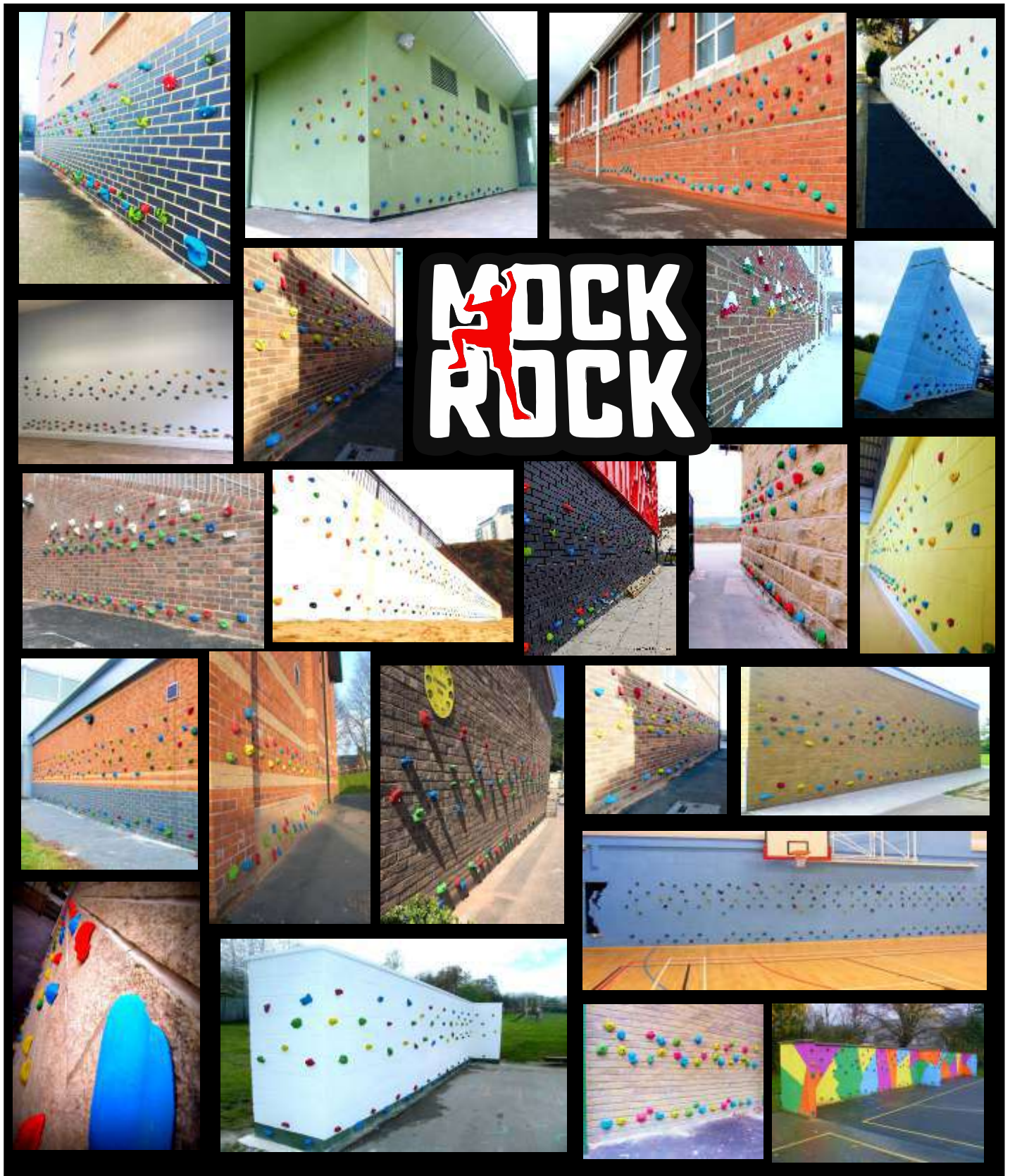
We can also quote rubber mulch and wetpour as an option, we use a trusted company who specialise in this type of surfacing

Direct to masonry prices including safety-surfacing

Length	Number of Climbing holds	Area of ramped edge safety tiles 30mm depth	Installed Price
2-4 Metres	50 Climbing Holds	12 square metres	£2350
5-7 Metres	70 Climbing Holds	20 Square metres	£3100
8-12 Metres	100 Climbing Holds	26 Square metres	£4345



Examples direct to masonry



Climbing murals on masonry



Technical Specification

- We clean, prime and prepare the wall to ensure longevity.
- Our team use the highest quality paints that are resistant to UV damage.
- We can install these all year around but delays may occasionally be possible in extreme weather such as high winds or excessive rain.
- We offer a service package on the murals so they can be refreshed at a low cost. ***This won't be required for at least 7 years.***
- Can be placed in sports halls or on to virtually any masonry wall.

Murals to masonry combined with traverse walls



Pick one of our existing designs or create your own -Next page



Realistic Jungle



Cartoon Jungle



Mountains



Meadows & Flowers

Direct to masonry prices with mural and surfacing options

Length	Number of climbing holds	Traverse wall direct to masonry	Traverse wall with safety tiles	Traverse wall with Mural	Traverse wall with Mural and safety matting
2-4 Metres	50 climbing holds	£1250	£2350	£2350	£3750
5-7 Metres	70 climbing holds	£1540	£3100	£3100	£5400
8-12 Metres	100 climbing holds	£2200	£4345	£4345	£6100

Our illustrators can turn your ideas into reality



Bespoke murals can be combined with a traverse on to masonry with climbing holds designed to complement the artwork.

We work with a number of artists who all specialise in different styles from typography to realism.

The Custom illustration fee is £350 in addition to the mural price (see previous page) and that design is unique to your school.

If you email a photograph of the proposed wall we create a visualisation. Upon confirmation of the design we then book it in to prime and paint. The design fee allows room for a few changes until you are completely happy to proceed.

Design



In progress



Finished Mural



Design



Finished Mural



Design



Finished Mural



If it is not possible to paint direct to the wall Murals and traverse walls can also be mounted on boards and fixed to a wall or on one of our free-standing structures

Boards fixed to masonry



Technical Specification

- We use the latest waterproof advanced technical panels not plywood
- Each board is primed, painted and sealed with a protective laquer
- These climbing holds are permanent fix to help preserve the life of the board and artwork
- Fixed with safety critical resin anchors
- No maintenance required
- Artwork is done off site which means they can be installed in all weather
- More durable than any printed artwork available
- Climbing holds are fixed with stainless steel screws

Boards fixed to masonry prices with safety surfacing option

Length	Boards fixed to masonry	Boards to masonry including safety-surfacing
4.8 Metres	£3700	£4400
6 Metres	£4625	£5500
7.2 Metres	£5550	£6500
8.4 Metres	£6150	£6900

Free-standing structures with murals and option for bespoke design



Technical Specification

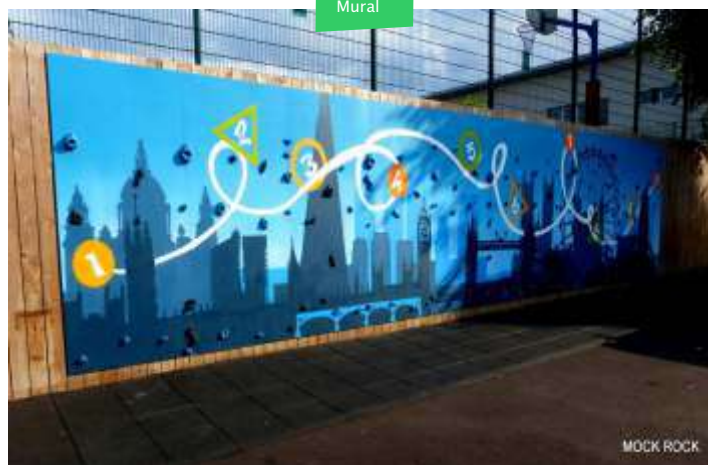
- Heavy duty free-standing structure constructed of 5th planed timber posts to prevent splinters
- Posts minimum 650mm depth depending on the substrate
- Stainless steel fixings throughout
- Technical weatherproof panels primed & sealed for longevity
- The panels are painted offsite and you can pick an existing design or bespoke for a+£350 design fee

Length	Number of climbing holds	Free-standing structure clad with mural panels and climbing holds without safety matting	Free-standing structure clad with mural panels climbing holds including safety matting
4.8 Metres	48	£3700	£4400
Price per additional 1.2 Metre section	12 per additional section	+£995	+£1100

Design



Finished Mural



Free-standing single sided traverse walls

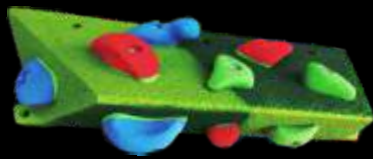


Free-standing single sided traverse walls
for tarmac or grass packed with climbing challenges

Build your own configuration and add more climbing
features!

These structures can be placed alongside an existing
fence or wall to maximise space. Ideal for tarmac or
grass with safety matting available for both types

Our new climbing feature volume (Giant climbing
hold). These outdoor features create a more
challenging and varied
climbing experience.
These are included as
standard on our free-
standing timber walls



Lime
Battenburg
Volume



Technical Specification

- Heavy duty free-standing structure with playground safe timber
- constructed of 5th planed timber posts to prevent splinters
- Posts minimum 650mm depth depending on the substrate
- Stainless steel fixings throughout
- Graded climbing challenges and feature volumes included

Length	Climbing holds & volumes	Single-sided free- standing	Single sided free- standing with safety- matting for grass	Single sided with safety- matting for tarmac
4.2 Metres	40 Climbing holds 2 volumes	£3900	£4500	£5600
+1.4 Metre section	20 Climbing Holds per 1.4M section 1 Volume	+£975 per 1.4M section	+£1125 per 1.4M section	+£1400 per 1.4M section

Free-standing double sided traverse walls



Free-standing double-sided traverse walls for tarmac or grass packed with climbing challenges

Build your own configuration and add more climbing features!

These structures are ideal for open spaces to utilise both sides of the structure and double the climbing area. Ideal for tarmac or grass with safety matting available for both options

These new feature volumes are included as standard on our free-standing timber traverse walls



Technical Specification

- Heavy duty free-standing structure with playground safe timber
- constructed of 5th planed timber posts to prevent splinters
- Posts minimum 650mm depth depending on the substrate
- Stainless steel fixings throughout
- Graded climbing challenges and feature volumes included



Length	Climbing holds & volumes	Double sided free-standing	Double sided free-standing with safety- matting for grass	Double sided with safety- matting for tarmac
4.2 Metres	80 Climbing holds 4 volumes	£4100	£4600	£5700
+1.4 Metre section (double-sided)	40 Climbing Holds per 1.4M section 2 Volume	+£1000 per 1.4M section	+£1200 per 1.4M section	+£1500 per 1.4M section

School make over

Technical Specification

- Artwork, indoors or outside
- Cladding/disguising unsightly buildings
- School signage hand-painted to the highest standard
- Theming of different areas
- School hall theatrical backdrops
- Shipping container painting and conversion

Our complete school make over service was a natural progression from murals and climbing walls. When budgets are under pressure sometimes we have to make do with unsightly structures, using imagination these can be transformed inexpensively to create a dramatic visual statement.



Inspired by the dramatic impact street art can have on any space. It stimulates imagination, educates and is the lowest cost method to make a bold statement



School Line Markings

- Dedicated line marking team
- Graffiti removal
- Line markings removal
- Mile a day circuits
- New MUGA games
- Wall markings
- Over markings
- Site safe preparation following construction work
- Car-parking bays
- Temporary event markings
- Sports hall markings
- Playground games
- Floor murals



Markings & Designs

Mile A Day Circuit - New studies by experts claim all school children should run or walk a mile each day to combat a rising tide of obesity. With more and more schools joining the daily mile community we are pleased to be able to help by offering custom designed Daily Mile Circuits. Our design team will be able to present a suitable solution no matter how tricky the shape or size of the area you wish to place your circuit.

MUGA - We can convert your old sports court markings into an exciting new MUGA (Multi Use Games Area).

Our MUGAs will rekindle the kids enthusiasm for sports whilst utilising the space available to incorporate multiple games, for example, a combination of netball, football, hockey and basketball. Our team will take your needs and priorities into account when designing, to make sure that the MUGA works for all games and sports taking into account everything from line thickness, colour to marking order.

Wall Markings - Sports, games and inspiration don't need to be restricted to the floor! We have designs that are suited to utilise wall space too. From target practice to cricket stumps we have you covered.

Non-activity/ reading & quiet Areas - Sometimes it's important that children have a designated area that is a place to rest, read and just enjoy being quiet. We offer Area designs that can be used for this sole purpose or perhaps a multi-purpose area that has differing functions on differing days to allow quiet moments but encourage engagement in other activity on other days. These areas can be designed with graphics, solid block colours, a simply coloured outline or a combination of all three.

Over marking - Completely new ideas or refresh old favourites!

Refreshing playground markings and especially sports or court lines is very important to portray how seriously you are investing in quality play and your pupils. Over marking on a regular basis, in accordance with the manufacturers regulations, will not only keep your markings crisp and clean but will also help build up the resistance to expected normal wear & tear enhancing the durability of the marking.



Most of the world's climbing holds come from one company based in Bulgaria
We can beat prices worldwide and have some new sustainable climbing holds coming soon

We manufacture for a number of climbing and playground companies



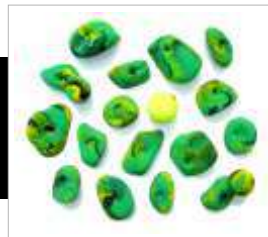
Made in polyester or the latest polyurethane. The way Climbing holds are manufactured at present relies upon oil based sources (other than wooden ones which have other issues in traceability to FSC timber)

We have developed a system that makes climbing holds more sustainable utilising carbon capture technology and sourcing materials as close as possible to the manufacturing location

Even our packaging is recycled foam that was destined for landfill, the function and reduced environmental impact is considered in everything we do
In addition we offer a recycle service for old climbing holds to be ground up and remade

We can colour match existing brands so you can extend existing routes or bulk out more expensive sets on large installations

Our rubber-backed grips at Essex outdoors Mersea solved the problem of spinning climbing holds



Climbing hold Quantity	Screw on type	Bolt on type Medium/Large	Bolt on Rubber-backed type Medium/Large	Extra large Rubber-backed holds
Minimum 1000X quantity	£2.25 Each	£3.50 Each	£4.10 Each	£8.10 Each

Charities



We have previously done the toughest long distance trek in the world in Nepal to raise money for the Anthony Nolan Trust (£5000) with the cost of the trek paid for by Mock rock, so all the money went to the charity. This was a month long trip with 5 mountains above 6000 metres.



We now do something every year closer to home, such as the 24 peaks in 24 hours we completed in May 2019 raising £1800 for 'Adrian Sudbury School's Education Trust' (ASSET)

This is a great asset to our work as we get more inspiration for our installations!



MOCK ROCK



Mock Rock
Unit 4
Manchester House
Pinxton
NG16 6JN

www.Mockrock.co.uk

Email Sales@mockrock.co.uk
Phone 07527 527 247
Facebook : Mock rock Climbing
Instagram : MockRockUK