



**OPEN UP TO AN ORGANIZED GARAGE**



# WELCOME HOME

Imagine arriving home at the end of a productive day and opening your beautiful garage door to see all of your belongings neatly organized on the walls, a clean, attractive floor and a stylish yet functional cabinetry system. For most of us, the garage is an overlooked, unfinished and under utilized space with massive potential. Garage Living specializes in complete garage solutions and can make your dream garage a reality. Our team will design a custom project with products and services to resolve your everyday storage and organization challenges. We encourage you to read through and keep this idea book to provide you with inspiration, motivation and an understanding of Garage Living's ability to create the garage of your dreams.

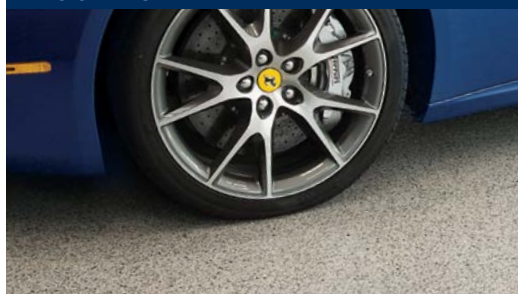


# TRANSFORMING GARAGES FROM THE FLOOR UP

# WHAT WE DO

Every Garage Living project is a custom solution tailored to the different wants and needs of each one of our clients. As a full service company, we manage all of our projects regardless of size or scope. From simple wall organizers to complete garage transformations including garage door replacements, our professional team will design, coordinate, plan and execute every element of your project making the entire experience simple and stress free. Our projects typically include a combination of the following product categories and value added services.

## FLOORING



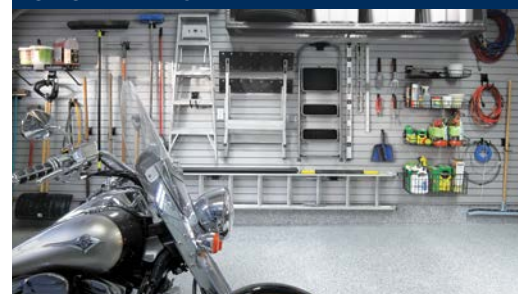
Floortex™ Decorative Concrete Floor Coatings.

## CABINETY



Modular and custom cabinetry systems.

## ORGANIZERS



Wall Organizers, Overhead Storage Units & Tire Racks.

## GARAGE DOORS



Traditional, Carriage and Contemporary styles, Operators and Capping.

## CAR LIFTS



Certified vehicle and storage lifts to maximize your parking space.

## SERVICES



Management of all renovation services to complete your garage project.











## HIS AND HERS GARAGE



# CREATING YOUR DREAM GARAGE

The dream garage in this custom estate home required designer creativity, collaboration with the customer and meticulous attention to detail and focus on their lifestyle. Regardless of the size of the garage or scope of the project, we create abundant, easy-access customized space for sporting equipment, gardening supplies and hobby work surfaces. Our focus on the needs and desires of our customers allows us to create a dream garage for every project.

## GARDENING



## OUTDOOR ACTIVITIES



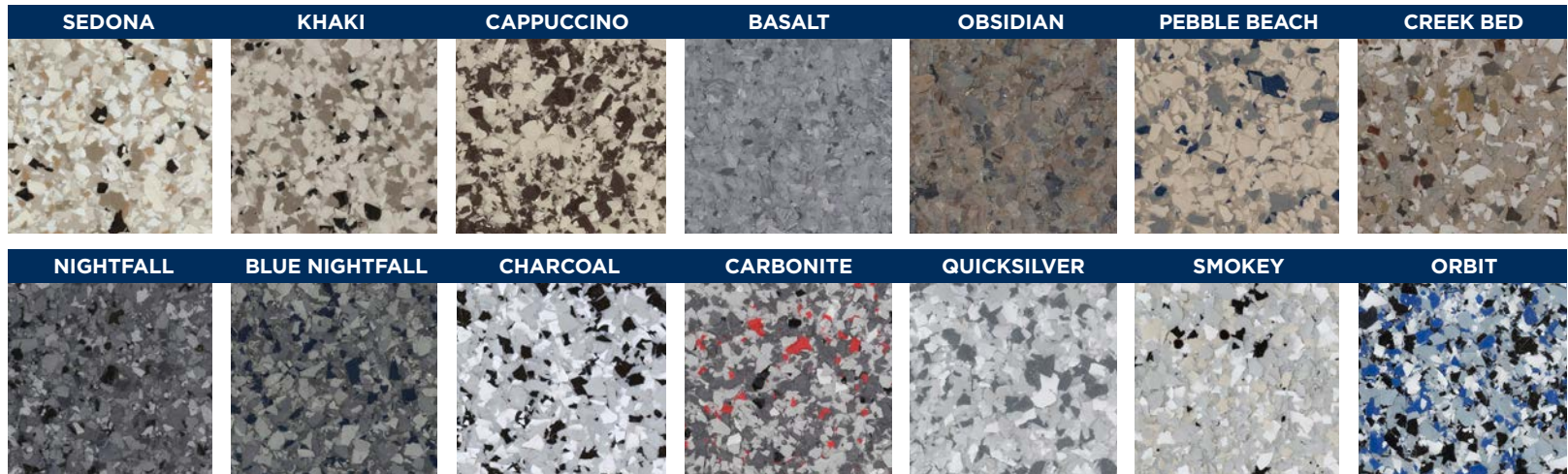
## ACTIVE FAMILY LIFESTYLE



# GARAGE FLOORING



**FLOORTEX™ COATING** Garage Living specializes in the preparation of concrete surfaces and the application of the highest quality concrete floor coatings available on the market. Using Floortex™ Polyaspartic Coatings, our professionally trained applicators can complete your garage floor in as little as one day. The Floortex™ Coating system and professional application transforms a dirty, dusty and damaged concrete floor into a clean, durable and attractive surface that fits with the rest of your home and lifestyle.



Print colors may vary slightly. Visit our showroom to see additional colors. Selection may vary by location.





FLOORTEX™ NIGHTFALL COATING | GL CUSTOM CABINETRY | SLATWALL ORGANIZERS





**NON-SLIP TEXTURE**



**DUST-FREE & EASY-TO-CLEAN**



**CHEMICAL & ABRASION-RESISTANT**





# FLOORTEX™ COATING SYSTEM

Garage Living prepares each floor with industrial diamond grinding equipment and dustless self-contained vacuum systems. This aggressive preparation ensures a mechanical bond between the coating and concrete. All imperfections are filled to give the floor a smooth, level surface. Garage Living applies only the highest grade polyaspartic coating produced by Floortex™ that is UV and chemical resistant, with eco-friendly zero VOC and rapid curing. Garage Living's Floortex™

system is a 100% coverage, vinyl flake broadcast that is applied to the entire floor surface, foundation walls, wood steps and baseboards. Typical applications require only one day to complete and are ready to be enjoyed after 24 hours. After completion, Garage Living provides a written 10 year limited warranty certificate so you can rest assured that we stand behind the quality of our product and professional workmanship.

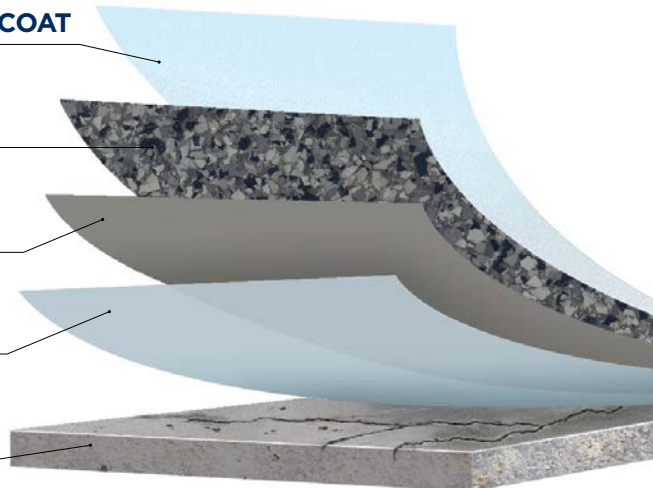
## STEP 5 | CLEAR DURABLE FLOORTEX™ TOP COAT

## STEP 4 | DECORATIVE FLOORTEX™ FLAKES

## STEP 3 | PIGMENTED ADHESIVE BASE COAT

## STEP 2 | CRACK & CHIP REPAIR

## STEP 1 | DIAMOND GRIND SURFACE



## STEP 1 | DIAMOND GRINDING



## STEP 2 | CRACK & CHIP REPAIR



## STEP 3 | ADHESIVE BASE COAT



## STEP 4 | BROADCASTING FLAKES



## STEP 5 | FLOORTEX™ TOP COAT







# GARAGE CABINETRY

Garage Living offers a wide variety of garage cabinetry systems to transform your garage into a welcoming and functional room in your home—a place to work, pursue hobbies, entertain, or simply get all your belongings behind closed doors and out of sight. All components are designed for the garage and built to stand the test of time. Whether fitted or freestanding, we will design a unique cabinetry system to meet your needs and suit your lifestyle.









**CUSTOM-FITTED STEEL CABINETRY** We will design a system that fits your space and work with you to determine the features of each component. From specialty locker and glass door display cabinets, to built-in sink units and pullout drawers for small hardware, we will design the high-quality steel storage system of your dreams. Our custom cabinets feature double-walled construction with European soft close hinges and powder-coated finishes with either a smooth texture or high-gloss appearance. Our two lines of custom cabinetry are called: GL NEOS ELITE CABINETRY and GL CUSTOM STEEL CABINETRY.





**MODULAR STEEL CABINETRY** Garage Living's modular cabinetry can be configured to meet your needs, space and budget. All components are powder-coated, with welded steel construction and magnetic door latches. We have a large variety of modular components and colors to build the perfect garage cabinetry system for you. Our two lines of modular cabinetry are called: GL SIGNATURE CABINETRY and GL PREMIUM CABINETRY.







"The makeover was completed and I must say we were absolutely overwhelmed with happiness when both my husband and I arrived home to a newly renovated garage. My husband was thrilled! Garage Living definitely delivered the WOW factor that I was looking for in this type of spontaneous purchase for my husband. I again want to express my appreciation for a wonderful job, and I thank you!" – Kathy S.

## CUSTOM GARAGE STORAGE AND HEAVY-DUTY WORKSPACE

Our GL Hayley cabinetry is constructed from thick, 16-gauge steel, with rigid double wall doors and cabinets. The rugged, industrial design, and workshop-friendly features of this cabinetry system are perfect for garage workspaces that need to accommodate heavy-duty use.



**6" TOE KICK**



**LOCKING CABINETS**



**BUILT-IN PLUGS**



**125 LB BALL-BEARING SLIDES**





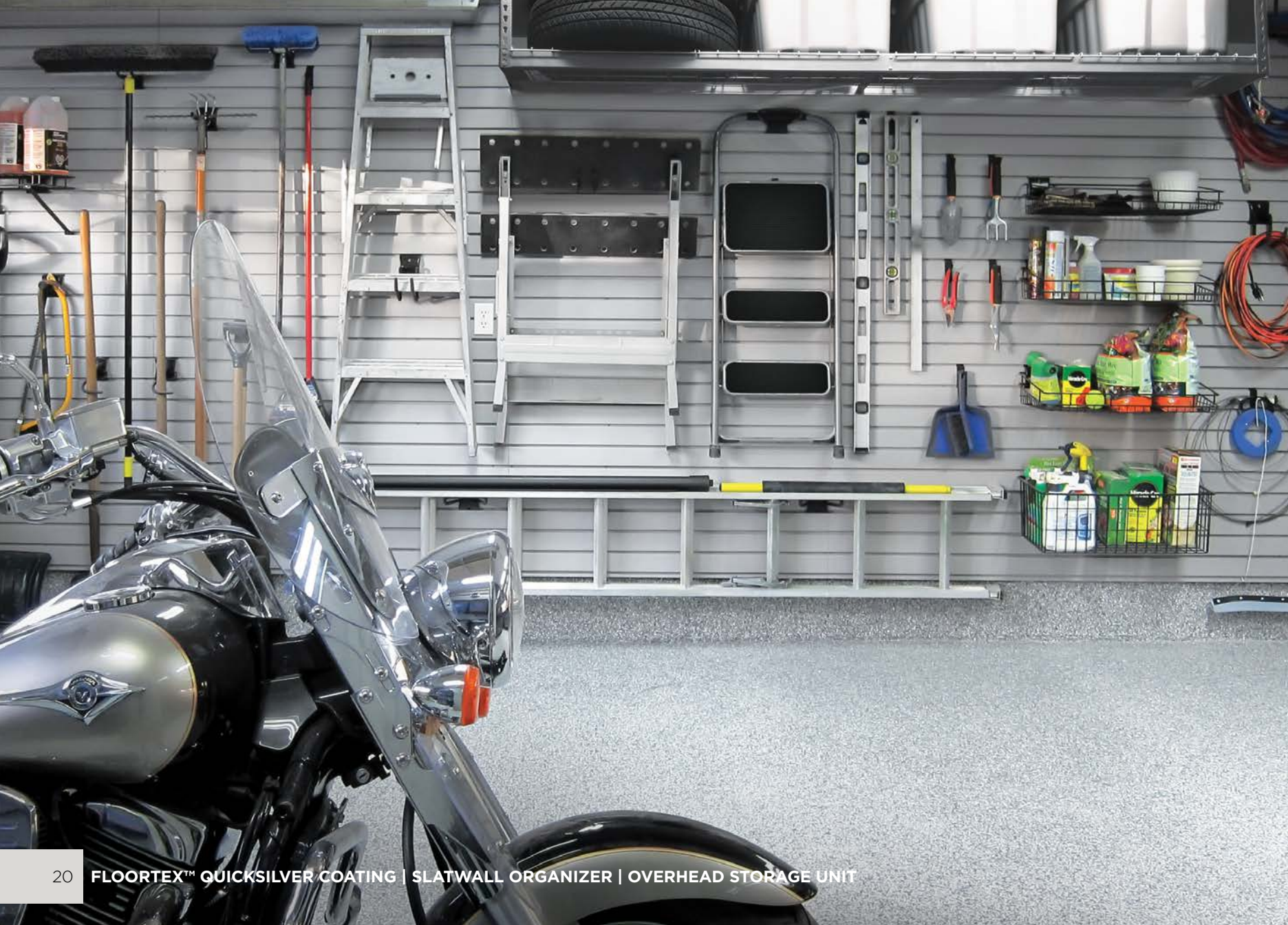


# TRANSFORMATIONS

Garage Living has completed thousands of garage transformation projects of varying scope and size. Our clients are always amazed at how quickly we can transform a cluttered or unfinished garage into a clean, organized space.





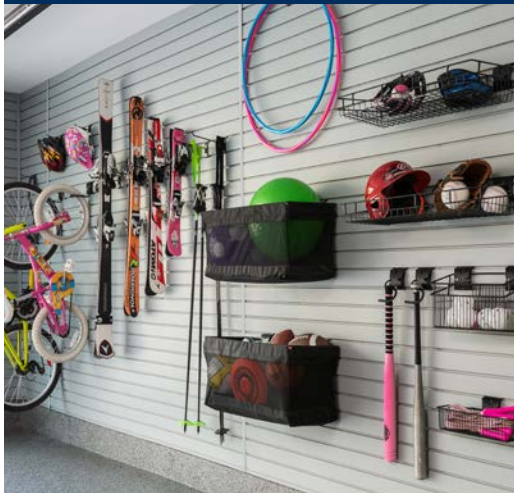




# GARAGE ORGANIZERS

**UNIQUE GARAGE STORAGE SOLUTIONS** Garage Living's wall organizers and accessories get all of your belongings off the floor and on the wall, creating room to walk, play, work and easily park. Whether you need to hang up tools and toys or want to finish the walls from top to bottom, our versatile system can be configured to make the most of your space. Overhead storage units will support over 600 lbs and are available in a variety of sizes. Heights can be customized to allow for both high and low ceilings. Garage Living also carries a variety of specialty organizers for tires, bicycles, trash bins and recycling.

**WALL ORGANIZERS & ACCESSORIES**



**OVERHEAD STORAGE UNITS**



**TIRE STORAGE RACKS**







## HOSE REEL



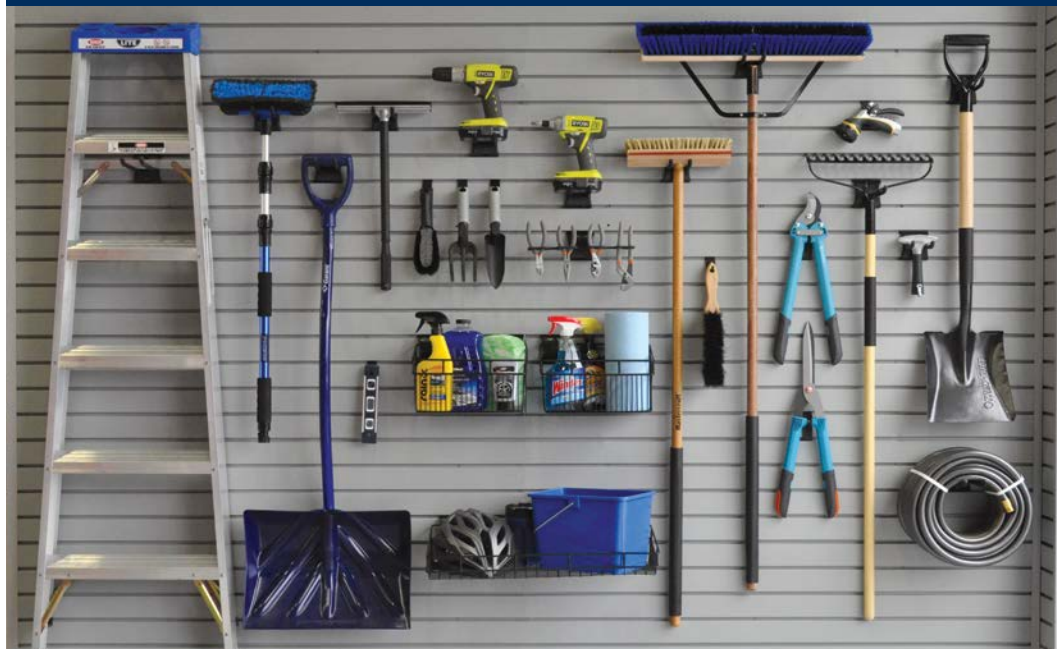
## LED LIGHTING



## BIKE HANGERS



## WALL ORGANIZERS & ACCESSORIES



## GOLF RACK



# HOOKS

**J HOOK**



**SINGLE HOOK (1", 4", 8")**



**8" DOUBLE HOOK**



**PAPER TOWEL HOLDER**



**LONG TRIPLE HOOK**



**3" GARMENT HOOK**



**4" DOUBLE HOOK**



**SCREWDRIVER HOLDER**



**DEEP UTILITY HOOK**



**HORIZONTAL BIKE HOOK**



**HOCKEY HANGER**



**MAGNETIC TOOL BAR**



**26" INDUSTRIAL HOOK**



**S HOOK**



**4" LOOP HOOK**



**VERTICAL BIKE HOOK**





# RACKS, BASKETS, BINS & SHELVES

**BALL RACK**



**GOLF ACCESSORY HOLDER**



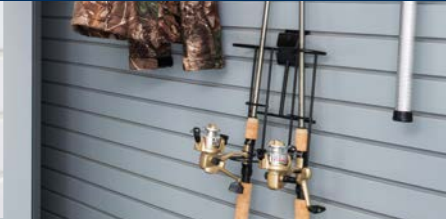
**ANGLED SHOE SHELF**



**UTILITY BIN**



**FISHING ROD RACK**



**GARDEN RACK WITH BASKET**



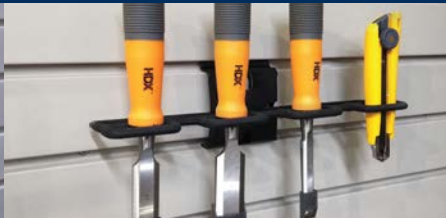
**6 TILT OUT STORAGE BIN**



**9 TILT OUT STORAGE BIN**



**SMALL TOOL RACK**



**SHALLOW BASKET**



**MEDIUM BASKET**



**SMALL SHELF**



**TENNIS RACK**



**DEEP MESH BASKET**



**MINI BASKET**



**LARGE SHELF**









# GARAGE DOORS\*

A new garage transformation is truly not complete without a quality, insulated and beautiful garage door that protects the finished interior from the elements while enhancing the curb appeal of your home. Select from a full range of garage door styles from traditional, carriage and contemporary to complement you and your lifestyle. As part of the design and consultation process, our team will work with you to select the perfect style of door that best suits your home's architecture and your personal taste.

**CARRIAGE STYLE PAINTED WOOD GARAGE DOOR**



**STEEL CARRIAGE STYLE GARAGE DOOR**



**STEEL LONG PANEL STYLE GARAGE DOOR**



\* Available at select Garage Living locations.

# AUTOMOTIVE LIFTS

Instantly double your parking space without the cost of a major renovation or expensive off-site storage. Great for a summer toy or just to accommodate two vehicles in one parking space. Lifts are ideal for residential applications and are installed within one day.



SPECIFICATIONS			
	8,000 lbs	8,000 lbs	9,000 lbs
	72"	86"	85"
<b>Overall Length</b> (with Approach Ramps)	207 1/2"	222 1/4"	218 1/2"
<b>Overall Length</b> (Without Approach Ramps)	176"	190"	197"
<b>Overall Width</b> (with motor)	115"	115"	133"
<b>Overall Width</b> (Without motor)	103 1/2"	103 1/2"	121"
<b>Approach Ramps</b>	36 3/4"	36 3/4"	36 1/2"
<b>Runway Width</b>	18 1/2"	18 1/2"	19 1/2"
<b>Runway Length</b>	165 1/2"	180"	188"
<b>Runway Thickness</b>	4 1/2"	5"	5"
<b>Drive-Through Width</b> (Outside of tire to outside of tire)	80 1/2"	80 1/2"	97"
<b>Clearance Under Runways</b>	68"	81"	80"
<b>Clearance Between Runways</b>	37 3/4"	37 3/4"	39 1/2"
<b>Clearance Between columns</b>	94"	94"	109 1/2"
<b>Height of Columns</b>	83"	95 3/4"	97"
<b>Outside Runway To Outside Runway</b>	74 3/4"	74 3/4"	78 1/2"
<b>Shipping Weight</b>	1820 lbs	1920 lbs	2350 lbs
<b>Power Unit</b>	110 Volt, 1HP	110 Volt, 1HP	110 Volt, 1HP

# GARAGE RENOVATION SERVICES

Garage Living manages projects from start-to-finish, and relieves our clients of the burden of finding and hiring skilled tradespeople to complete the entire project. All of our team members are licensed and insured, and we handle the scheduling and coordination. Regardless of your specific needs, we have the people to complete the entire project on time and on your budget.



## GARAGE DOOR SUPPLY & INSTALLATION \* \*\*



## GARAGE DOOR OPERATORS \*



## ALUMINUM CAPPING \*



## PAINTING & DRYWALL



## INSULATION



## JUNK REMOVAL



## GARAGE DOOR REPAIR \*



## LIGHTING & ELECTRICAL \*\*



## CONCRETE REPAIR



## GARAGE HEATING \*\*



## ON SITE STORAGE



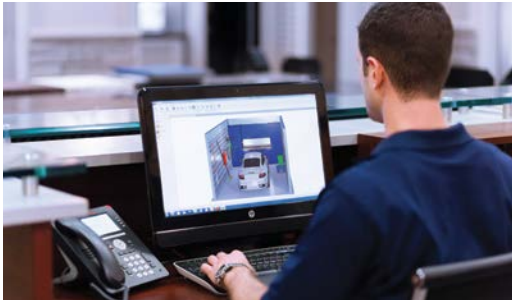
\* Available at select Garage Living locations.

\*\* In jurisdictions where licensing regulations apply, we do not subcontract. We refer clients to preferred qualified licensed contractors for lighting & electrical, heating, and garage door installation.

# HOW WE WORK



**CONSULTATION** Whether in our showroom or in the comfort of your home, Garage Living's team of garage design experts will provide you with a free consultation to discuss your project, evaluate your space and develop a custom design that meets your needs and your space requirements.



**DESIGN** Once we have all of the measurements and understand your goals, we will create a virtual 3D scaled drawing of your garage using our CAD software. This will help us plan the space and help you envision the completed project before work begins.



**INSTALLATION** Our team of highly skilled and experienced installers arrive on-site first thing in the morning and are always available to discuss any questions you have. Customer service and satisfaction are the core elements in the Garage Living experience.



# VISIT OUR SHOWROOMS

The Garage Living showroom is open to the public without an appointment. With fully outfitted garage displays, our visitors are able to see, touch and feel all of the products and services we offer. This experience is extremely valuable to both our existing and potential clients. This is where they can envision their completed space and discuss the project with our team in a realistic setting. Whether you are ready to tackle your garage or just looking for ideas, we invite you to visit us and be inspired!





# COMPLIMENTARY IN-HOME DESIGN CONSULTATION

[www.garageliving.com](http://www.garageliving.com)



**GARAGE LIVING HEADQUARTERS AND FLAGSHIP SHOWROOM**

