

Meet

XiNiX

SMART LIGHT

Temporary lighting is mandatory and essential.
The insights you want to **BE PRODUCTIVE**.
The lights your site needs to **BE SAFE**.
With XiNiX, you **GET BOTH!**



Occupancy Sensing & Active Dimming



Power Outage Mitigation – Battery Backup

Auxiliary
Light



60 / **2**
MINUTES / WATTS

24
HOURS



Wireless
Mesh
Network
Link

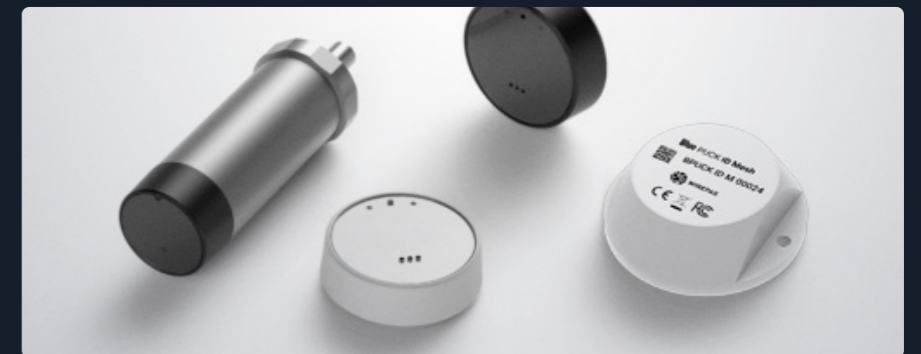
Wireless Sensor & Asset Tracking Backbone

2.4
GHz

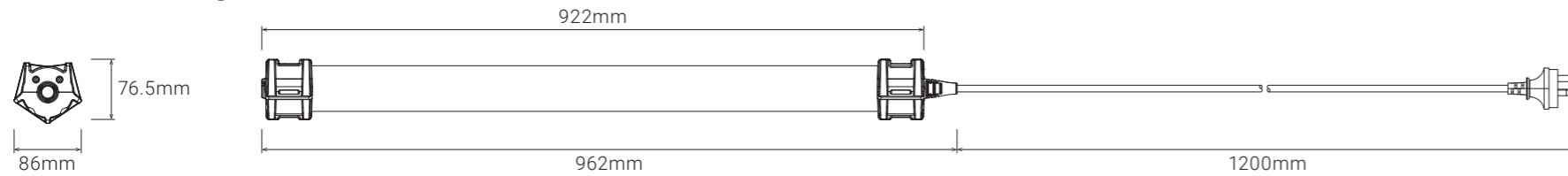


WIREPAS ENABLED

- Asset Tag
- Environmental Sensor
- Machine Monitoring



Technical Specifications

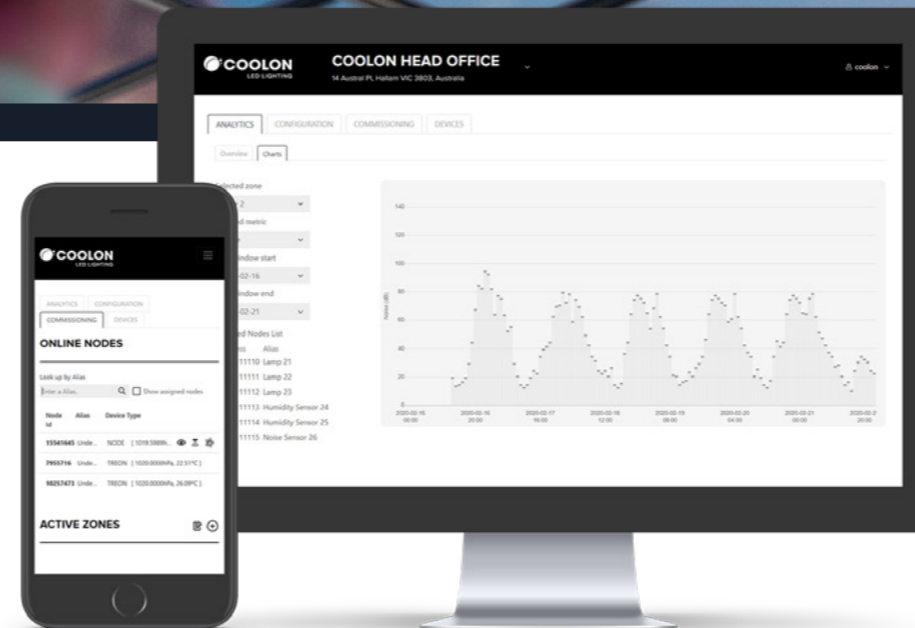
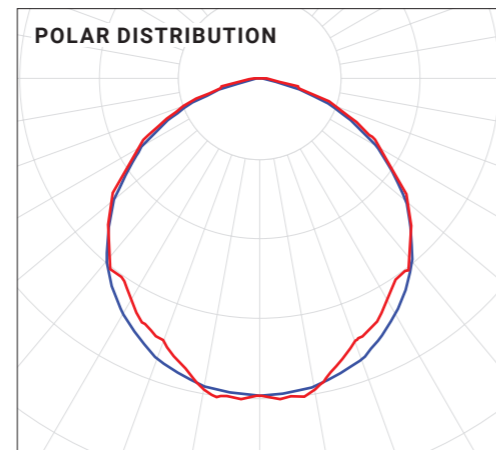


XINIX
by **COOLON**

Power Consumption	51.2W
Operating Voltage	90 – 305VAC 127 – 300VDC
Luminous Flux	8,181 lm 377 lm (EM)
Luminous Efficacy	159.8lm/W
CCT	4000K 5000K (EM)
CRI	Ra = 75.5
IP Rating	IP55
IK Rating	IK08
Operating Temp. Range	-20°C to +50°C
Expected Lifespan	Up to 50,000 hours
Body Composition	Polycarbonate
End Cap Composition	Rubber
Luminaire Weight	2.4kg



E _c AT CENTRE (LUX)	E _c AT CENTRE (LUX)	
	MP	EM
1m	2986	135
1.5m	1327	60
2m	747	34
2.5m	478	22
3m	332	15
3.5m	244	11
4m	187	8.4



Cloud

Every light automatically connects to the self forming wireless network and can be managed and configured through the cloud from anywhere in the world.

XINIX - POM - MP - AU

PRODUCT	TYPE	SUPPLY	PLUG
XINIX Temporary Construction Light	POM With Power Outage Mitigation Module	MP Mains Powered	AU Australian Flex and Plug