

EASY INTERIORS by

Lumbermen's
AN EMPLOYEE OWNED COMPANY

Easy Barnwood



Easy Brew Pub



Easy Pine



Easy Porch

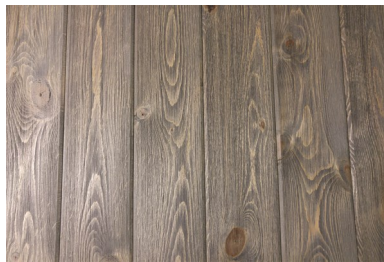


EASY BARNWOOD

**TRADITIONAL
WHITE**



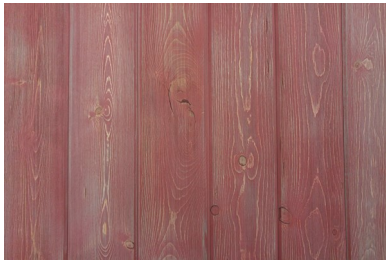
**OLD
BARN GRAY**



**COVERED
BRIDGE**



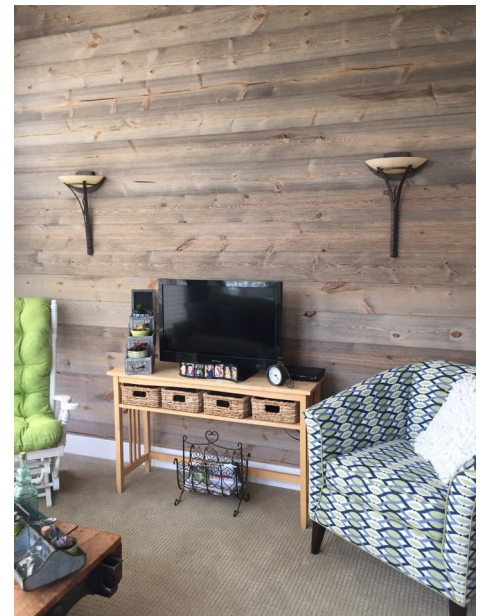
**BARN
RED**



**SILVER
ASH**



**MIXED
BARNWOOD**



EASY BARNWOOD

Commonly Asked Questions:

Q: Does Easy Barnwood require maintenance when used inside?

A: Easy Barnwood is a low to no maintenance product when used inside. As with all wood products you can experience some color change over time.

Q: Where can Easy Barnwood be used?

A: Interior walls & ceilings, man caves & basements, three season rooms, interior barn doors, porch ceilings, covered outdoor living areas and commercial interiors.

Q: Can Easy Barnwood be used as siding or in other areas that are exposed to the weather?

A: No. Easy Barnwood is not recommended for exterior siding or areas exposed to the weather.

Q: Does Easy Barnwood have a warranty?

A: No. Easy Barnwood should never be exposed to the weather, so there is no need for a warranty.

Q: Is touch up stain available?

A: No. You should go to your nearest paint store and purchase a stain that is close in color.

Q: Is matching trim available?

A: Yes. The trim comes in 8' lengths. The actual thickness is 1 1/6" and the width is approximately 3 1/2". Add 15% for defects and cutting waste.

Q: How much Easy Barnwood should I order?

A: Add up the total square footage you want to cover. Add 15% for defects and cutting waste. Divide this number by nine. This will give you the number of 16' pieces you will need for your project.

Q: Any helpful hints for installation?

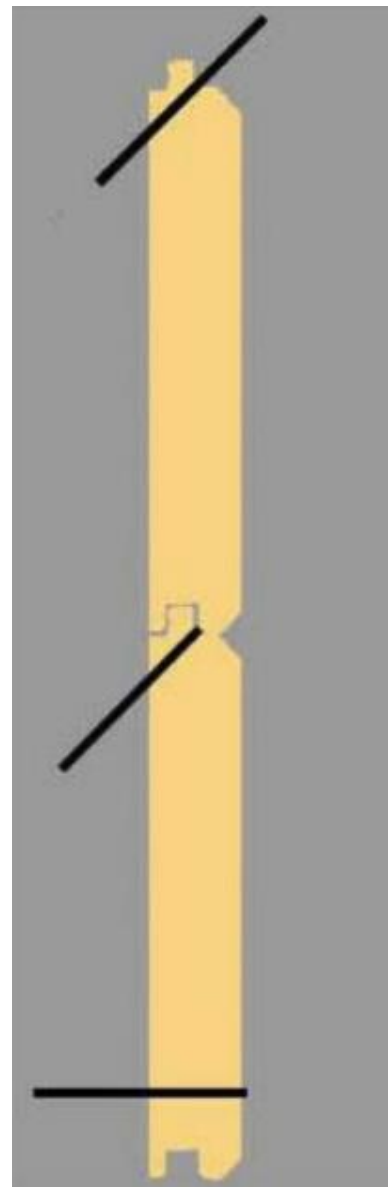
A: Yes. You will want to randomly stagger butt joints for the best appearance. Your project will look its best if you install 40% - 60% of the 16" T&G pieces without cutting into smaller pieces. We suggest selecting the boards with your favorite character to leave as your 16' pieces. Then, depending on how much rustic character you prefer, cut out any undesirable characteristics, holes, or occasional end splits on the balance of your 16" pieces. Save and install the shorter pieces, as they are the key to randomly staggering butt joints. It's easy and beautiful. Installation instructions are available.



Easy Barnwood Installation Instructions

Easy Barnwood was created to capture the rustic, natural beauty of reclaimed barnwood without the high cost, difficult installation, and risk to your families' health. Let's walk through the steps of a typical ceiling or interior wall application.

- Easy Barnwood can be used on interior walls, ceilings, man caves, basements, three season rooms, interior barn doors, porch ceilings, covered outdoor living areas and commercial interiors.
- Easy Barnwood is not recommended for exterior siding or areas exposed to weather.
- Upon delivery immediately move Easy Barnwood indoors. Easy Barnwood must be transported and stored in a dry environment. Additionally, it should never be stored on a concrete surface.
- Use an air powered finishing nailer to fasten Easy Barnwood. We recommend using 16-gauge galvanized finishing nails that are 2" long for direct to stud application, or 2.5" long finishing nails for installing over dry wall. Maintain a nailing pattern of 16" - 24". Be sure each nail penetrates a stud or furring strip by at least 3/4" for a secure hold. In some instances a vapor barrier may be necessary.
- Lay the first piece of Easy Barnwood with its tongue side up and its side edge against a floor/corner junction. Leave 1/4" space from the bottom edge and 1/8" from the corners.
- It's easiest to begin at the base of the wall or ceiling so gravity is on your side.
- For the best look, make adjustments with the first board for a wall or ceiling that isn't perfectly square.
- After making any necessary adjustments you will need to face nail the first row of Easy Barnwood along the bottom edge to secure it in place to each stud, rafter or furring strip. These face nails can be concealed with Easy Barnwood Trim.
- Once the first row is secured you can begin to "blind nail" the boards into place. This is done by nailing down through the crotch of the tongue on a 45-degree angle. Each nail should pass through the crotch and then penetrate a stud, rafter or furring strip.
- Each piece should slide down to the piece below locking the Easy Barnwood together. You may need to gently tap the boards into place using a rubber mallet or wood block to prevent damaging the material.



- Check every second or third row to make sure you are staying parallel to the first row. It may be necessary to cheat on a row by not butting tight to the previous row. Remember to leave 1/8" of space at the corners.
- You will want to randomly stagger butt joints for the best appearance. Your project will look its best if you install 40-60% of the 16' T&G without cutting into smaller pieces. Then depending on how much rustic character you prefer, cut out any undesirable characteristics, holes, or end splits on the balance of your 16' pieces. Mix in the shorter pieces, as they are the key to randomly staggering butt joints.
- When you reach the final row trim the last piece to fit the opening. Face nail the final piece along the top edge. You can use Easy Barnwood Trim to conceal the face nails.

Enjoy your Easy Barnwood!

Wood Products Warning: Sawing, sanding, or machining wood products can produce wood dust and other substances known to the State of California to cause cancer. Avoid inhaling dust generated from wood products or use a dust mask or other safeguards for personal protection. Wood products emit chemicals known to the State of California to cause birth defects or other reproductive harm.

DISCLAIMERS

Due to the natural characteristics of wood, Easy Barnwood makes no representations about, and does not warrant against color change, swelling, shrinkage, checking and other movement of the product. Color change over time is considered normal and should be expected. In addition, color changes caused by direct sunlight and color variations caused by any item hung on the wall or ceiling (known as shadowing) are not considered a manufacturing defect.

It is possible a single job may contain Easy Barnwood from two or more production run dates. Different batches may vary in color and character. Prior to installation, it is imperative the installer verify the colors and characteristics from different run dates blend harmoniously.

Easy Barnwood is not reversible. Make sure you're installing the correct side.

Installation of this product assumes acceptance.

The installation information provided is intended to assist the installer in the proper installation of Easy Barnwood. It is not intended to replace applicable local building codes or industry standards. Installation of Easy Barnwood in accordance with such codes and standards is the sole responsibility of the installer, and Easy Barnwood assumes no liability for product installed improperly or not in conformity with such codes and standards.