



Handleless Unit Specification

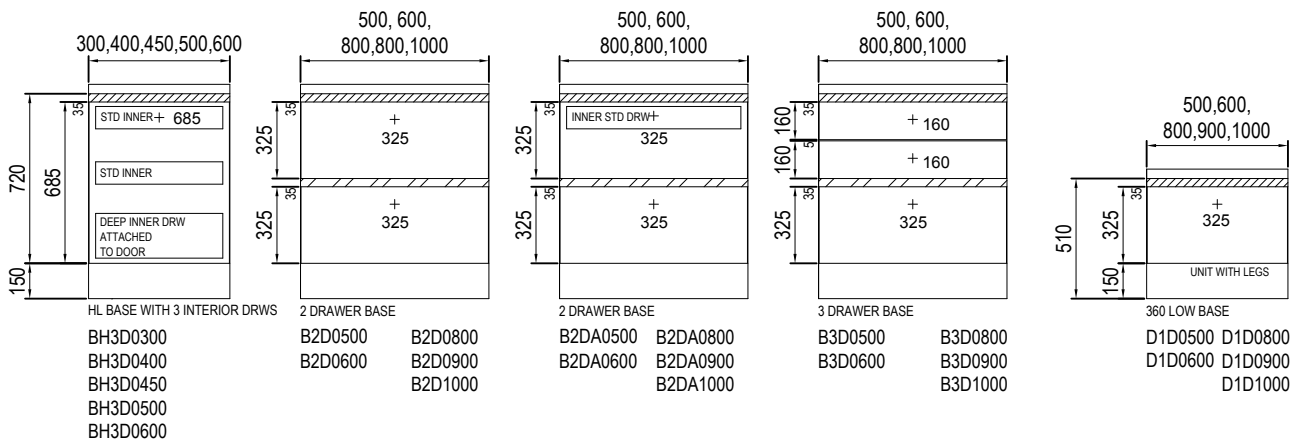
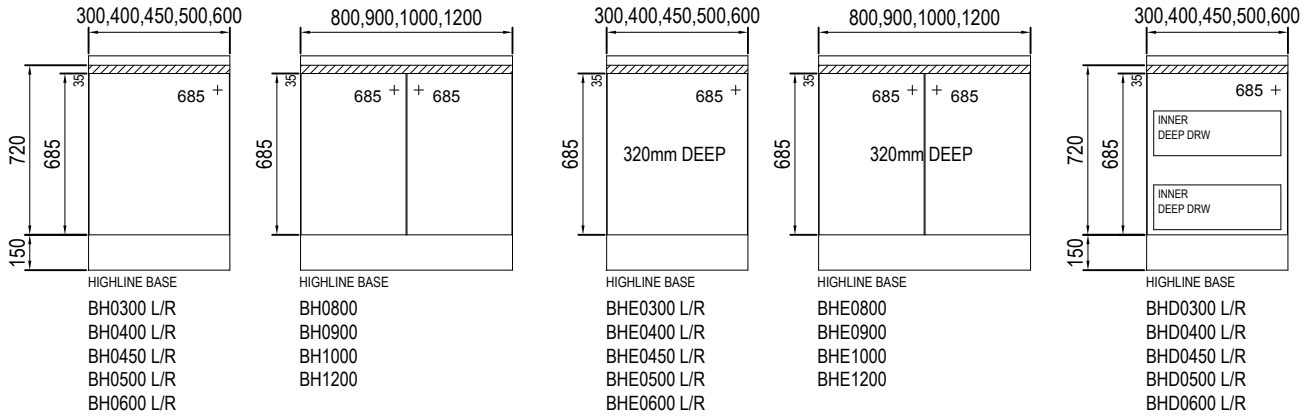
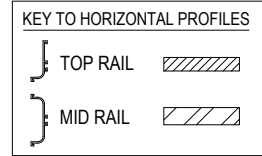


QUALITY BRITISH
CRAFTSMANSHIP

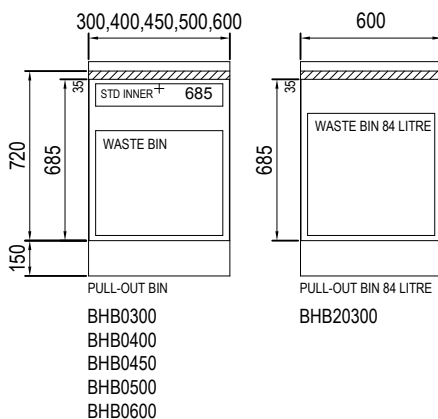
Guide to Unit and Door Sizes: "SPA FIELDS" Range

HANDLELESS

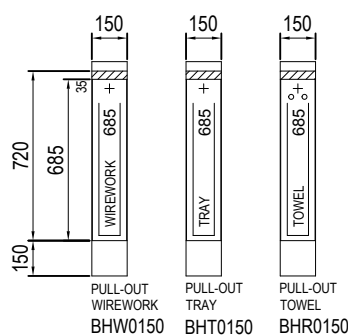
BASE UNITS, 720mm H



PULL OUT BASE UNIT BASE UNIT, 720mm H



150 PULL OUT BASE UNITS, 720mm H



APPLIANCE DOORS

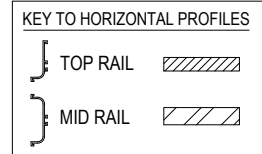
KAFHD0450	685 x 446
KAFHD0600	685 x 596
KAFED0600	450 x 596

HANDLELESS

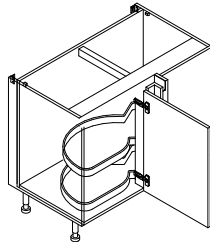
Guide to Unit and Door Sizes: "SPA FIELDS" Range

720mm LE MANS IN-LINE CORNER BASE UNITS

HANDLING OF IN-LINE UNITS:
L = BLANKING PANEL TO LEFT
R = BLANKING PANEL TO RIGHT

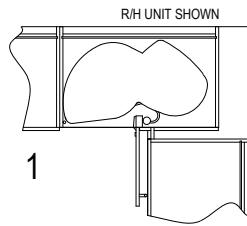


UNIT WITH 71x71mm CORNER POST

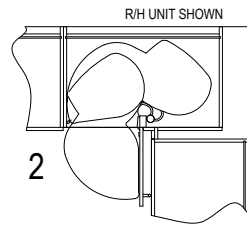


with pull out Le Mans wirework

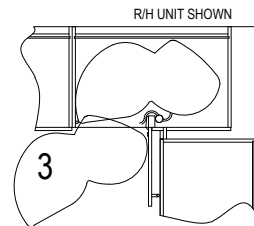
ABOVE: R/H HIGHLINE UNIT SHOWN



The door is opened...

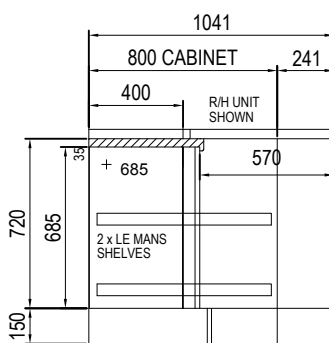


...the top or bottom tray swings forward



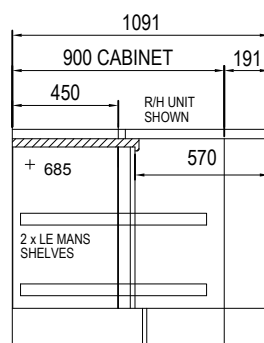
...and moves completely out of the cabinet

Note: the door must open to a 90 degree angle for the system to function properly.
Consideration must be given to the type of handle used on the door. Bulky handles may reduce the effectiveness of the door opening to a 90 degree angle.



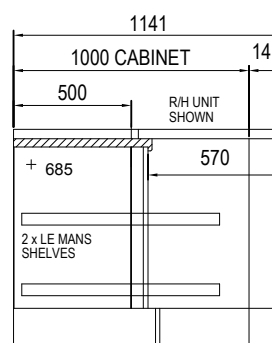
HIGHLINE CORNER BASE
WITH LE MANS PULL OUT

BH8L0400 L/R
800 CABINET WITH 400mm DOOR



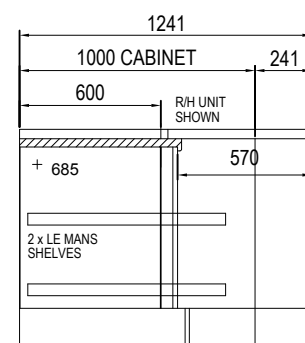
HIGHLINE CORNER BASE
WITH LE MANS PULL OUT

BH9L0450 L/R
900 CABINET WITH 450mm DOOR



HIGHLINE CORNER BASE
WITH LE MANS PULL OUT

BH1L0500 L/R
1000 CABINET WITH 500mm DOOR



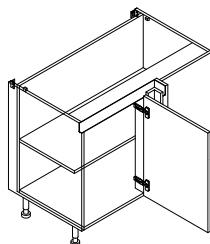
HIGHLINE CORNER BASE
WITH LE MANS PULL OUT

BH1L0600 L/R
1000 CABINET WITH 600mm DOOR

IN-LINE CORNER BASE UNITS WITH SHELF, 720mm H

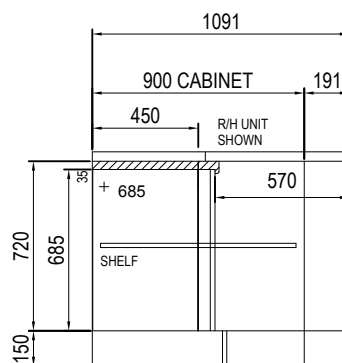
HANDLING OF IN-LINE UNITS:
L = BLANKING PANEL TO LEFT
R = BLANKING PANEL TO RIGHT

UNIT WITH 71x71mm CORNER POST



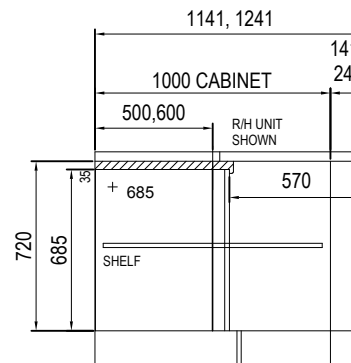
with shelf

ABOVE: R/H HIGHLINE UNIT SHOWN



HIGHLINE CORNER BASE
WITH SHELF

BH9S0450 L/R
900 CABINET WITH 450mm DOOR



HIGHLINE CORNER BASE
WITH SHELF

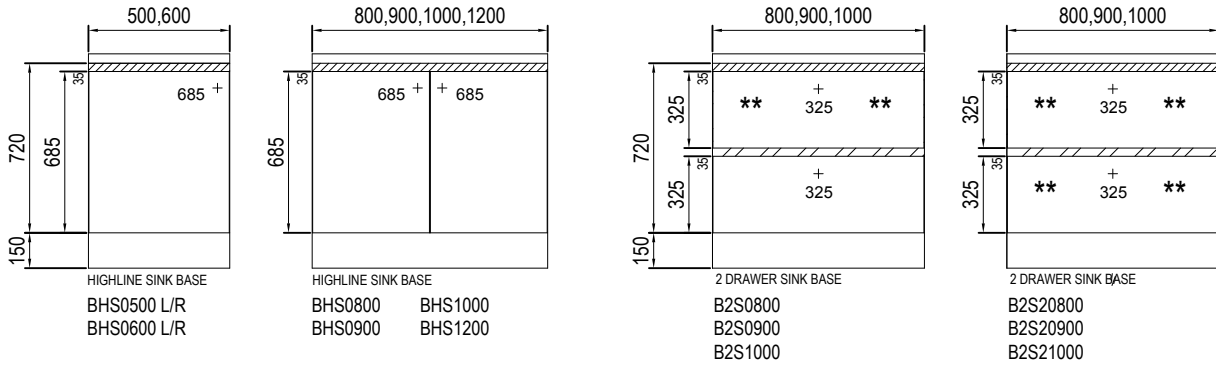
BH1S0500 L/R
1000 CABINET WITH 500mm DOOR

BH1S0600 L/R
1000 CABINET WITH 600mm DOOR

HANDLELESS

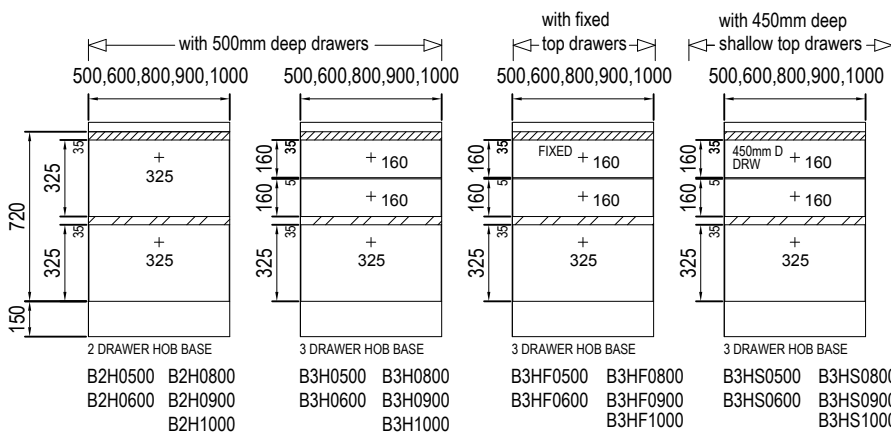
Guide to Unit and Door Sizes: "SPA FIELDS" Range

SINK BASE UNITS, 720mm H

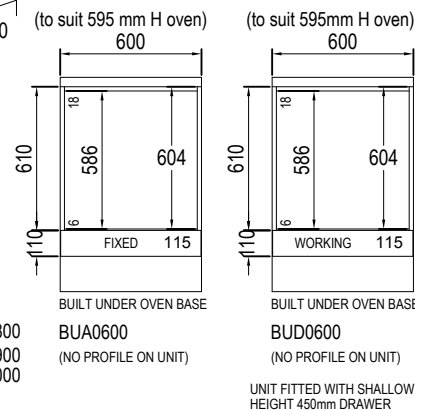


** ANTARO DRAWERS HAVE A CUT OUT IN THE DRAWERBOX
 LEGRABOX DRAWERS HAVE 2 x 150mm DRAWERBOXES BEHIND DRAWERFRONT

HOB BASE UNITS, 720mm H

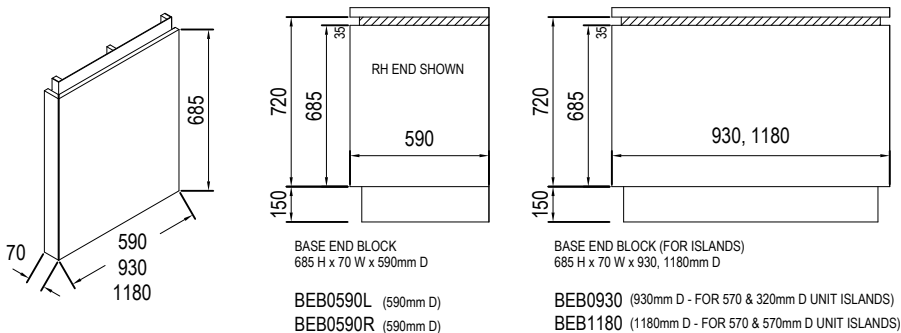


BUILT UNDER OVEN HOUSING BASE UNIT, 720mm H

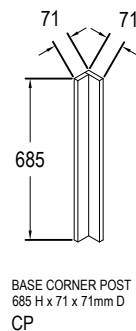


NOTE: CHECK HOB AND WORKTOP THICKNESS SPECIFICATIONS BEFORE ORDERING HOB/BUILT UNDER OVEN UNITS

BASE END BLOCKS, 720mm H



CORNER POST, 685mm H

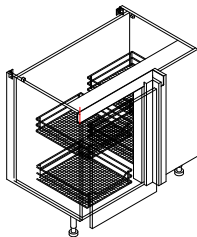


Guide to Unit and Door Sizes: "SPA FIELDS" Range

IN-LINE CORNER BASE UNITS, 720mm

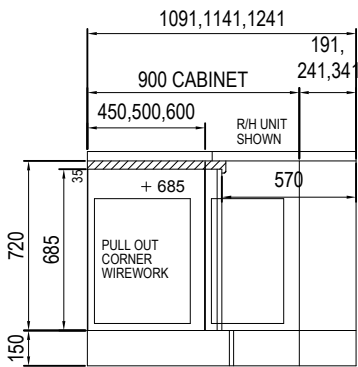
IN-LINE CORNER BASE UNITS WITH PULL OUT WIREWORK, 720mm H

UNIT WITH 71x71mm CORNER POST



with pull out wirework

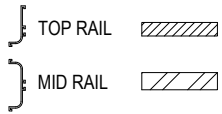
ABOVE: R/H HIGHLINE UNIT SHOWN



HIGHLINE CORNER BASE
WITH PULL OUT CORNER

- BH9P0450 L/R
900 CABINET WITH 450mm DOOR
- BH9P0500 L/R
900 CABINET WITH 500mm DOOR
- BH9P0600 L/R
900 CABINET WITH 600mm DOOR

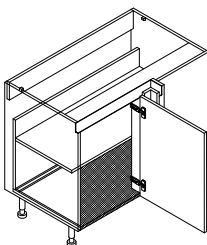
KEY TO HORIZONTAL PROFILES



HANDING OF IN-LINE UNITS:
L = BLANKING PANEL TO LEFT
R = BLANKING PANEL TO RIGHT

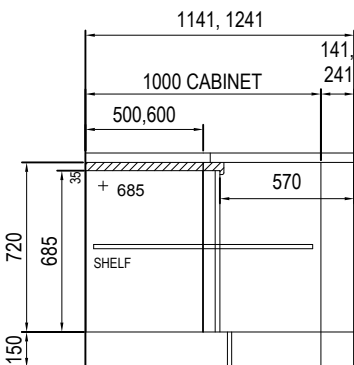
IN-LINE CORNER SINK BASE UNITS, 720mm H

UNIT WITH 71x71mm CORNER POST



sink base unit

ABOVE: R/H HIGHLINE UNIT SHOWN




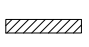


- BH1K0500 L/R
1000 CORNER SINK BASE WITH 500 DOOR
- BH1K0600 L/R
1000 CORNER SINK BASE WITH 600 DOOR

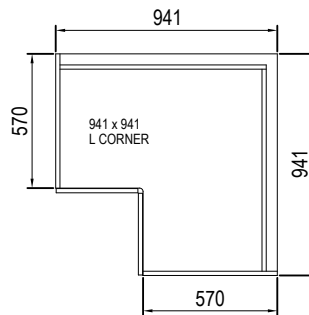
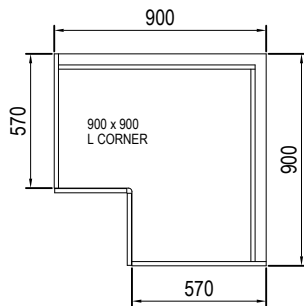
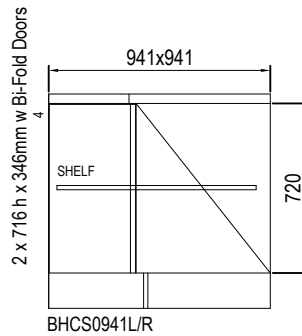
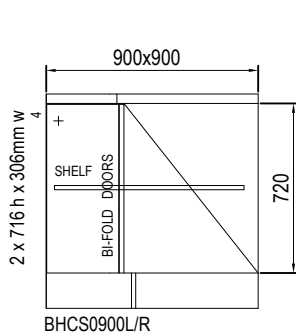
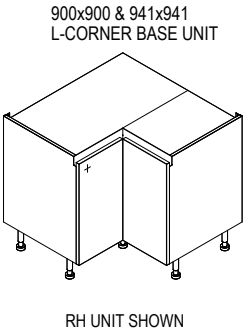
HANDING OF IN-LINE UNITS:
L = BLANKING PANEL TO LEFT
R = BLANKING PANEL TO RIGHT

Guide to Unit and Door Sizes: "SPA FIELDS" Range

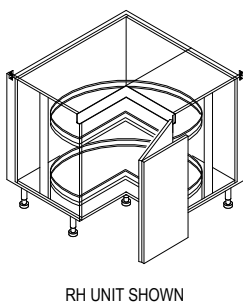
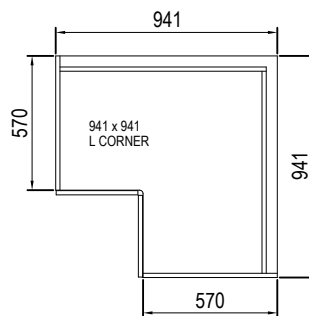
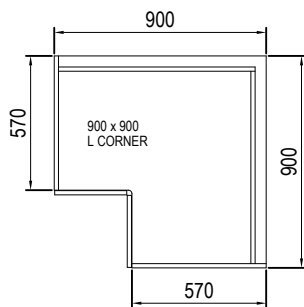
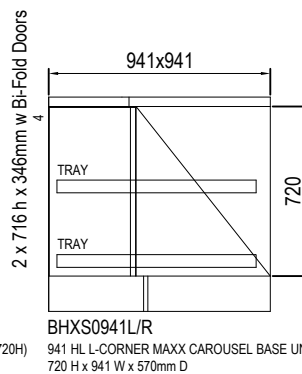
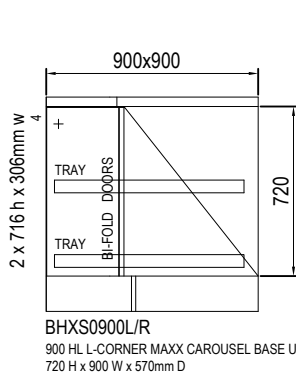
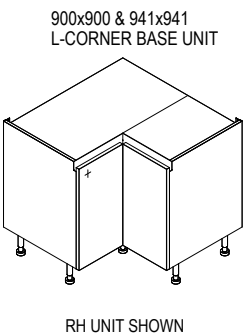
900x900 & 941x941 L-CORNER BASE UNITS

HANDLELESS

KEY TO HORIZONTAL PROFILES		
	TOP RAIL	
	MID RAIL	



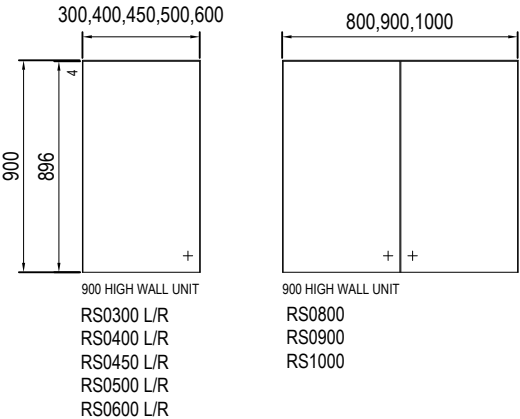
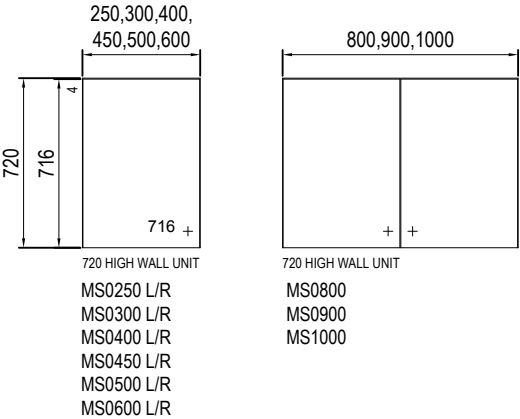
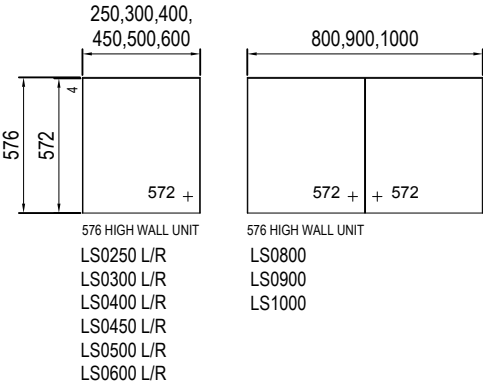
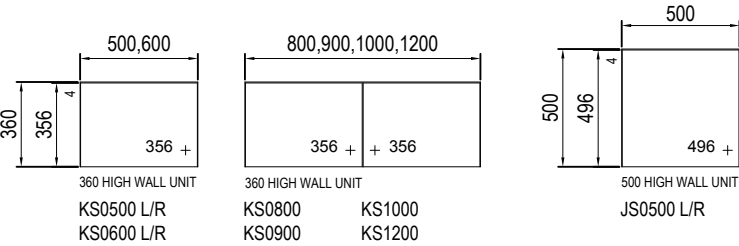
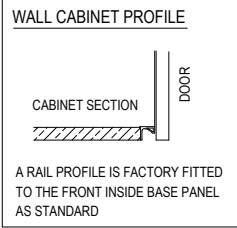
L-CORNER BASE UNITS WITH MAXX CAROUSEL



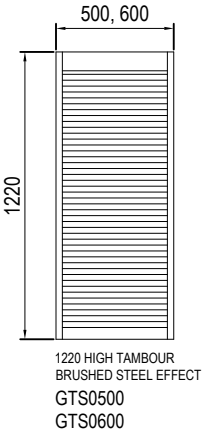
Guide to Unit and Door Sizes: "SPA FIELDS" Range

WALL UNITS, 360, 576 & 720mm H

HANDLELESS



1220mm H TAMBOUR UNIT

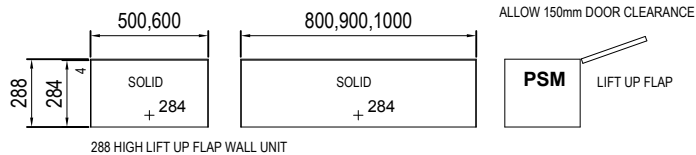
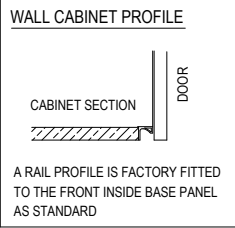


NOTE: FOR USE WITH 30mm WORKTOPS

Guide to Unit and Door Sizes: "SPA FIELDS" Range

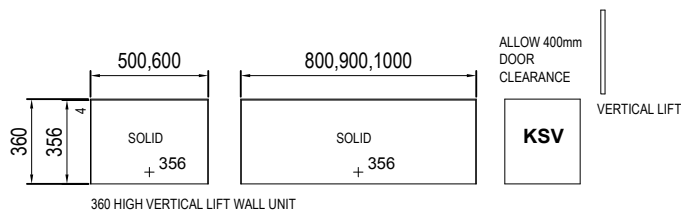
LIFT UP WALL UNITS, 288, 360, 576 & 720mm H

HANDLELESS



288 HIGH
LIFT UP FLAP
MANUAL

PSM0500
PSM0600
PSM0800
PSM0900
PSM1000

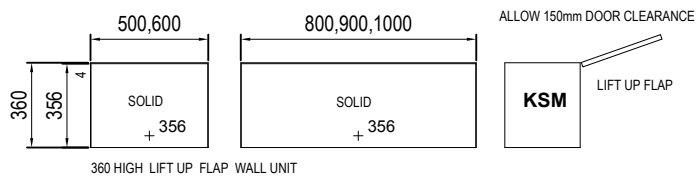


360 HIGH
VERTICAL LIFT UP
MANUAL

KSV0500
KSV0600
KSV0800
KSV0900
KSV1000

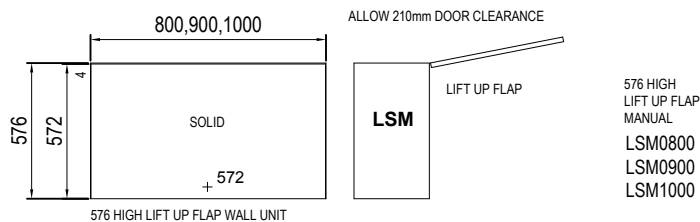
360 HIGH
VERTICAL LIFT UP
WITH SERVO DRIVE

KSV0800-S
KSV0900-S
KSV1000-S



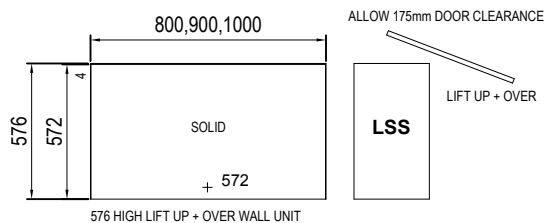
360 HIGH
LIFT UP FLAP
MANUAL

KSM0500
KSM0600
KSM0800
KSM0900
KSM1000



576 HIGH
LIFT UP FLAP
MANUAL

LSM0800
LSM0900
LSM1000

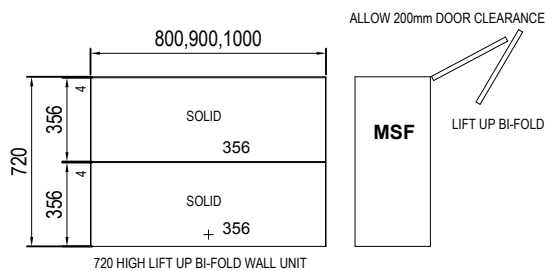


576 HIGH
LIFT UP + OVER
MANUAL

LSS0800
LSS0900
LSS1000

576 HIGH
LIFT UP + OVER
WITH SERVO DRIVE

LSS0800-S
LSS0900-S
LSS1000-S



720 HIGH
LIFT UP BI-FOLD
MANUAL

MSF0800
MSF0900
MSF1000

720 HIGH
LIFT UP BI-FOLD
WITH SERVO DRIVE

MSF0800-S
MSF0900-S
MSF1000-S

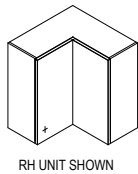
HANDLELESS

Guide to Unit and Door Sizes: "SPA FIELDS" Range

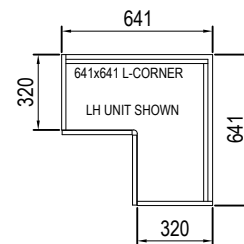
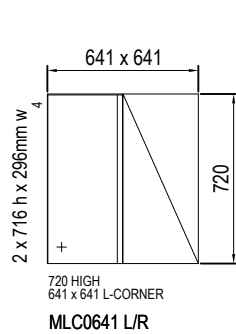
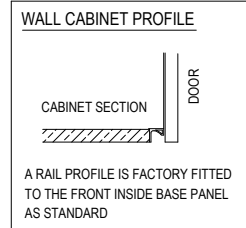
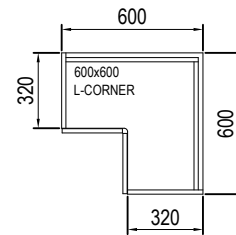
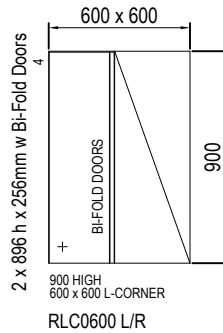
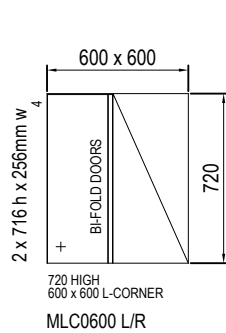
L CORNER & ANGLED CORNER WALL UNITS, 720 & 900mm H

600x600 & 641x641 L-CORNER WALL UNITS 720 & 900mm H

600x600 & 641x641
L-CORNER WALL UNITS

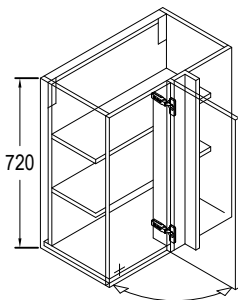


RH UNIT SHOWN

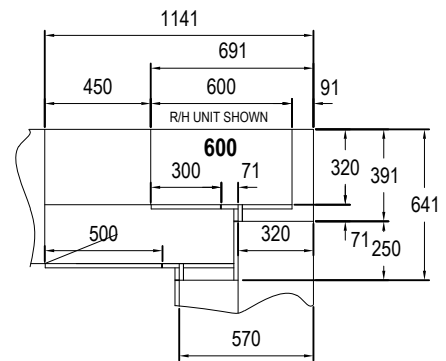
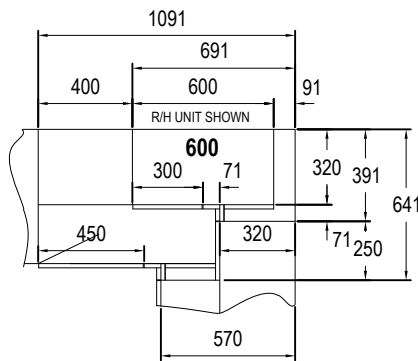


IN LINE CORNER WALL UNITS 720mm H

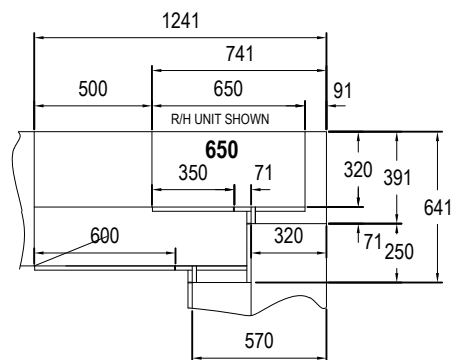
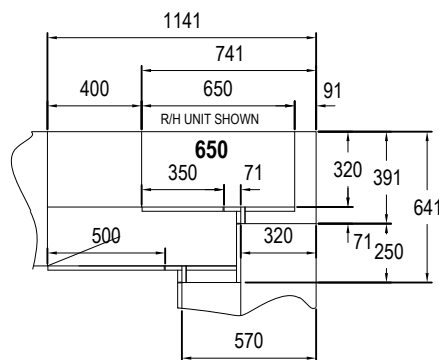
UNIT WITH 71x71mm CORNER POST



ABOVE: R/H HIGHLINE UNIT SHOWN



HANDING OF UNITS:
L = BLANKING PANEL TO LEFT
R = BLANKING PANEL TO RIGHT

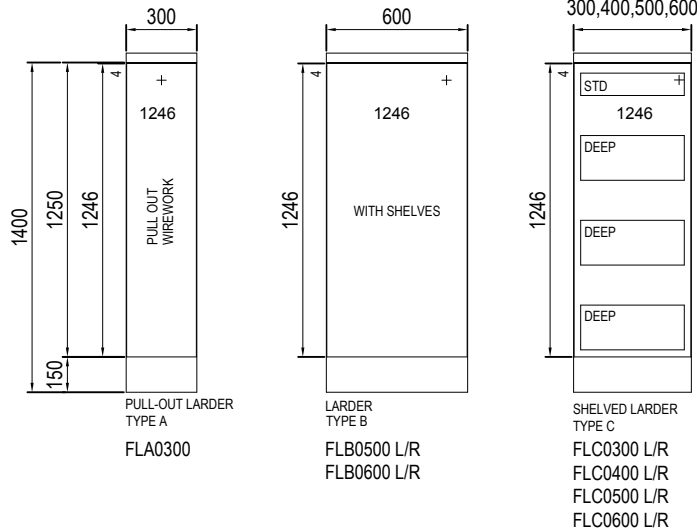


HANDLELESS

Guide to Unit and Door Sizes: "SPA FIELDS" Range

MID HEIGHT BASE UNITS, 1250mm H

LARDER UNITS, 1250mm H



KEY TO VERTICAL PROFILES

"ALLOW 30mm WHEN PLANNING BETWEEN TALL UNITS"



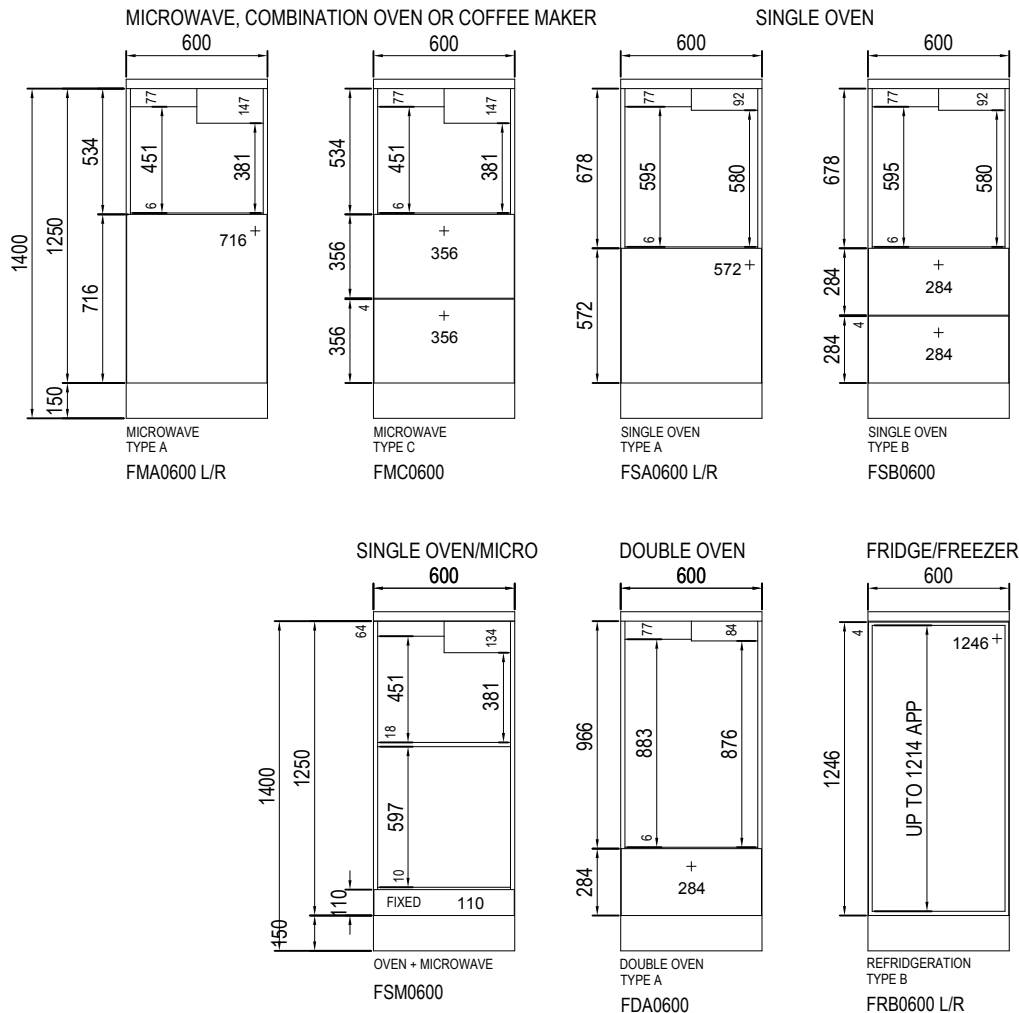
INTERMEDIATE PROFILE
ARE USED BETWEEN TALL UNITS
WHERE 2 x OPENING DOORS MEET



END PROFILE
ARE USED BETWEEN TALL UNITS WHERE
THERE IS 1 x OPENING DOOR TO ONE SIDE

APPLIANCE UNITS, 1250mm H

OVEN APPLIANCE UNITS ARE SUPPLIED WITH A FACIA FILLER PANEL WHERE APPLICABLE. PLEASE SPECIFY APPLIANCE MAKE & MODEL WHEN ORDERING



HANDLELESS

Guide to Unit and Door Sizes: "SPA FIELDS" Range

IN-LINE CORNER TALL UNITS, 1970mm

IN-LINE CORNER TALL UNITS WITH SHELF, 1970mm H

KEY TO VERTICAL PROFILES

"ALLOW 30mm WHEN PLANNING BETWEEN TALL UNITS"



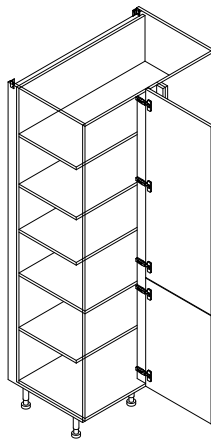
INTERMEDIATE PROFILE
ARE USED BETWEEN TALL UNITS
WHERE 2 x OPENING DOORS MEET



END PROFILE
ARE USED BETWEEN TALL UNITS WHERE
THERE IS 1 x OPENING DOOR TO ONE SIDE

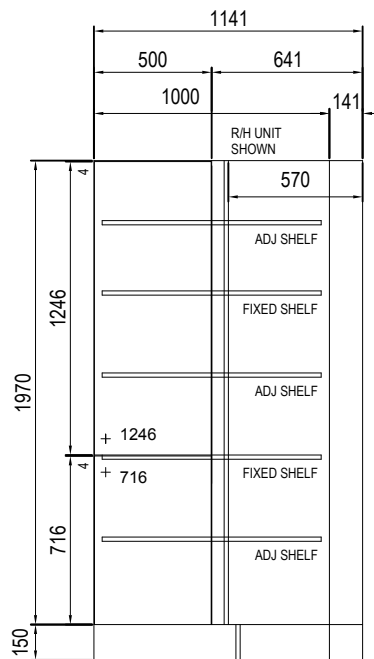


UNIT WITH 71x71mm CORNER POST



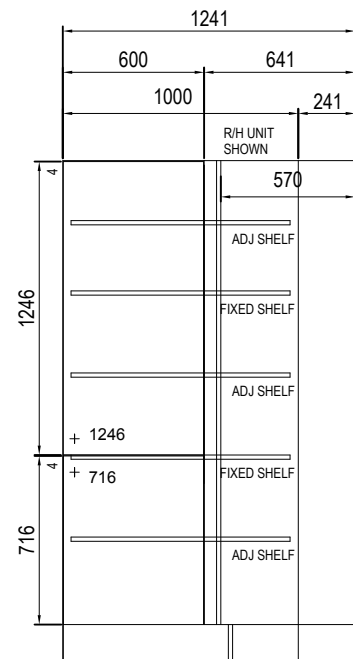
ABOVE: R/H UNIT SHOWN

HANDING OF IN-LINE UNITS:
L = BLANKING PANEL TO LEFT
R = BLANKING PANEL TO RIGHT



1970 IN-LINE CORNER TALL UNIT
WITH SHELF

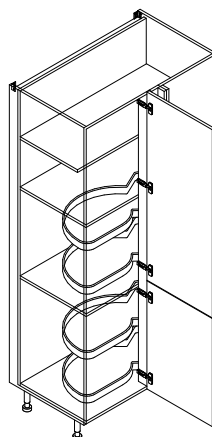
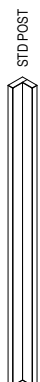
SL1S0500 L/R
1000 CABINET WITH 500mm DOOR



1970 IN-LINE CORNER TALL UNIT
WITH SHELF

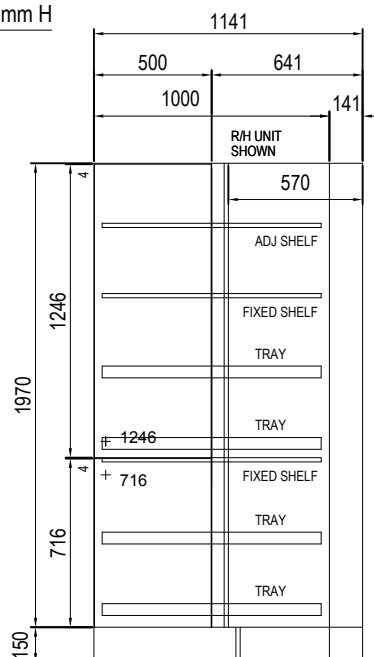
SL1S0600 L/R
1000 CABINET WITH 600mm DOOR

IN-LINE CORNER TALL UNITS WITH LE MANS, 1970mm H



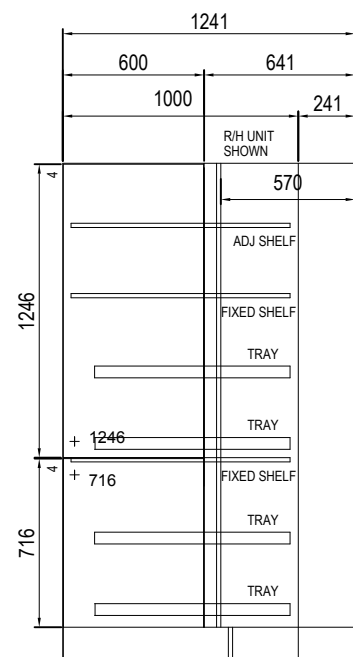
ABOVE: R/H UNIT SHOWN

HANDING OF IN-LINE UNITS:
L = BLANKING PANEL TO LEFT
R = BLANKING PANEL TO RIGHT



1970 IN-LINE CORNER TALL UNIT
WITH LE-MANS

SL1L0500 L/R
1000 CABINET WITH 500mm DOOR



1970 IN-LINE CORNER TALL UNIT
WITH LE-MANS

SL1L0600 L/R
1000 CABINET WITH 600mm DOOR

HANDLELESS

Guide to Unit and Door Sizes: "SPA FIELDS" Range

BROOM & LARDER TALL UNITS, 1970mm H

KEY TO VERTICAL PROFILES

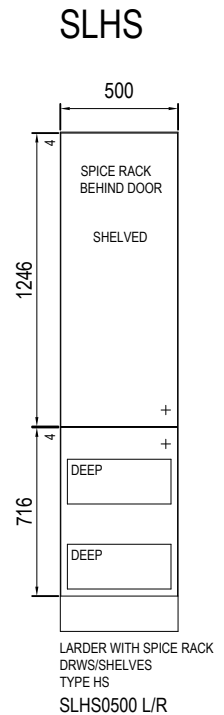
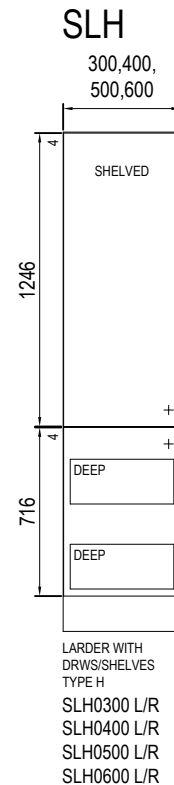
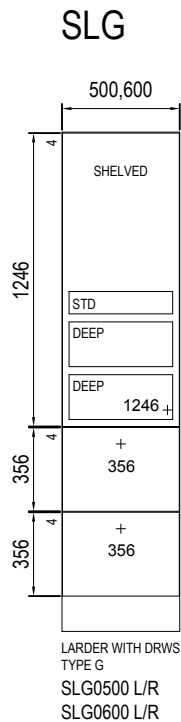
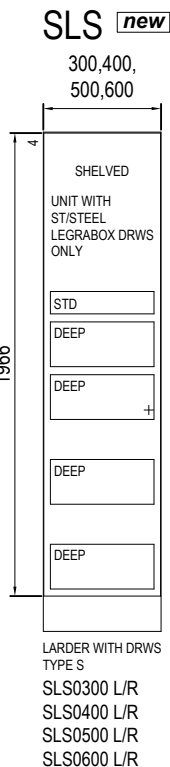
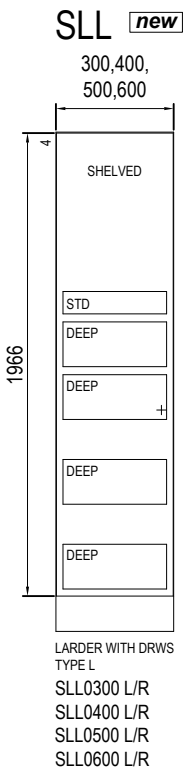
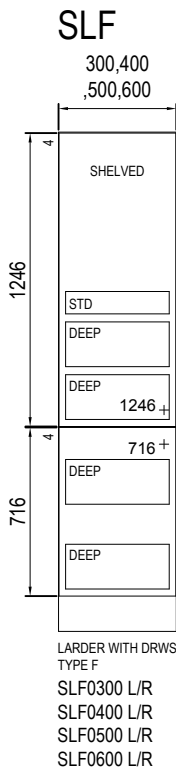
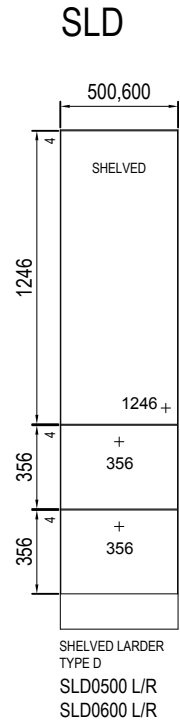
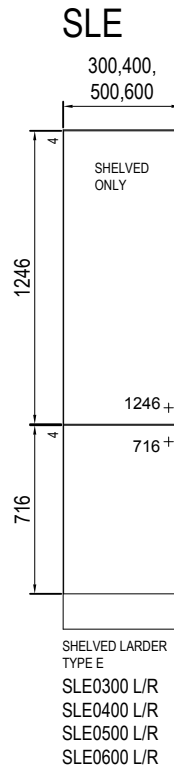
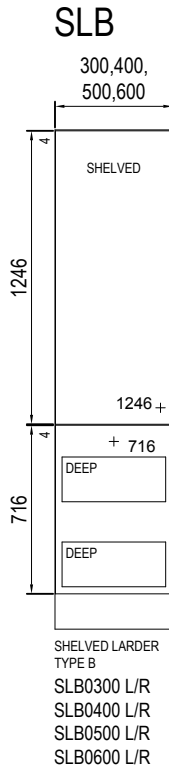
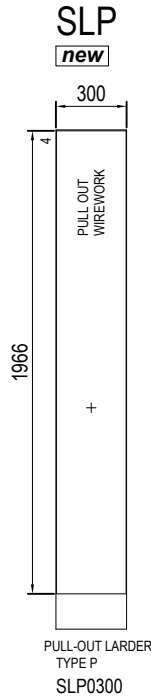
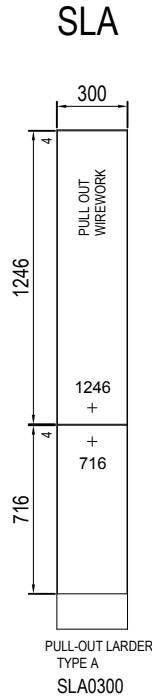
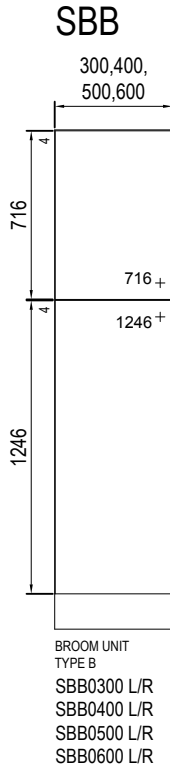
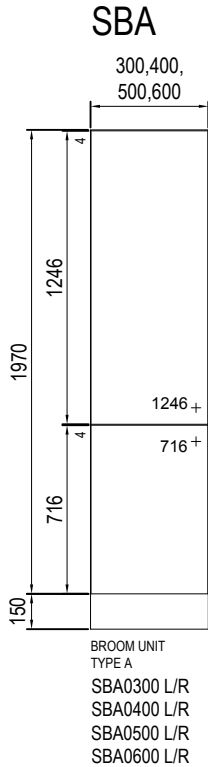
"ALLOW 30mm WHEN PLANNING BETWEEN TALL UNITS"



INTERMEDIATE PROFILE
ARE USED BETWEEN TALL UNITS
WHERE 2 x OPENING DOORS MEET



END PROFILE
ARE USED BETWEEN TALL UNITS WHERE
THERE IS 1 x OPENING DOOR TO ONE SIDE



HANDLELESS

Guide to Unit and Door Sizes: "SPA FIELDS" Range

APPLIANCE TALL UNITS, 1970mm H

OVEN APPLIANCE UNITS ARE SUPPLIED WITH A FACIA FILLER PANEL WHERE APPLICABLE.
PLEASE SPECIFY APPLIANCE MAKE & MODEL WHEN ORDERING.

KEY TO VERTICAL PROFILES

"ALLOW 30mm WHEN PLANNING BETWEEN TALL UNITS"

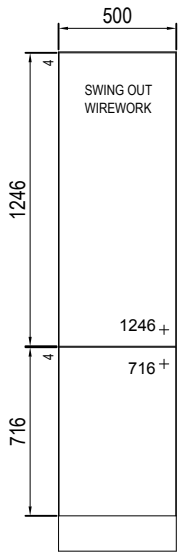


INTERMEDIATE PROFILE
ARE USED BETWEEN TALL UNITS
WHERE 2 x OPENING DOORS MEET



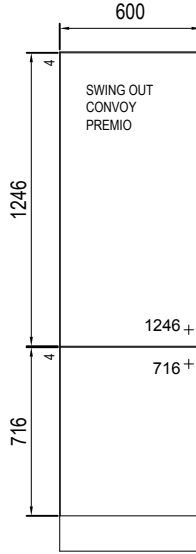
END PROFILE
ARE USED BETWEEN TALL UNITS WHERE
THERE IS 1 x OPENING DOOR TO ONE SIDE

SSP



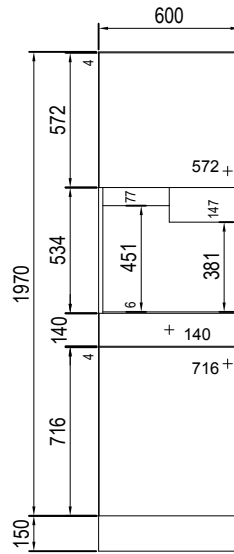
SWING-OUT LARDER
SSP0500 L/R
(HINGED DOOR)

SCP



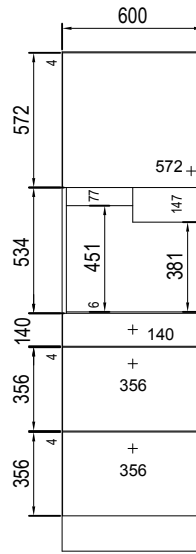
SWING-OUT CONVOY PREMIO
SCP0600 L/R
(HINGED DOOR)

SMA



MICROWAVE
TYPE A
SMA0600 L/R

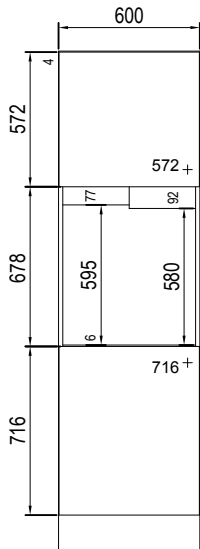
SMC



MICROWAVE
TYPE C
SMC0600 L/R

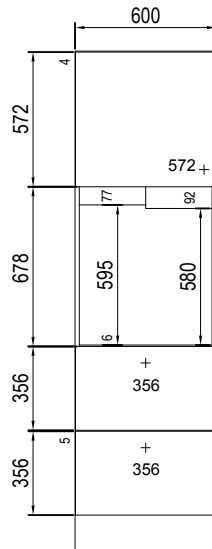
units used with horizontal profile

SSA



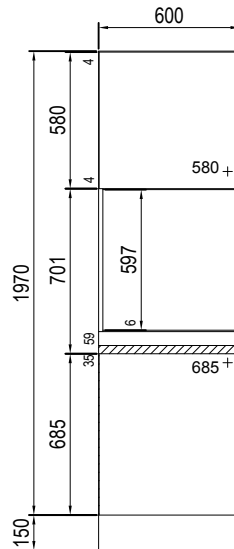
SINGLE OVEN
TYPE A
SSA0600 L/R

SSC



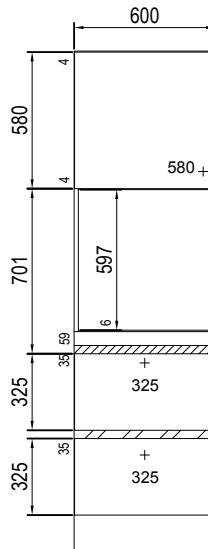
SINGLE OVEN
TYPE C
SSC0600 L/R

SSAH



SINGLE OVEN
TYPE A
SSAH0600 L/R

SSCH



SINGLE OVEN
TYPE C
SSCH0600 L/R

HANDLELESS

Guide to Unit and Door Sizes: "SPA FIELDS" Range

APPLIANCE TALL UNITS, 1970mm H

OVEN APPLIANCE UNITS ARE SUPPLIED WITH A FACIA FILLER PANEL WHERE APPLICABLE.
PLEASE SPECIFY APPLIANCE MAKE & MODEL WHEN ORDERING.

KEY TO VERTICAL PROFILES

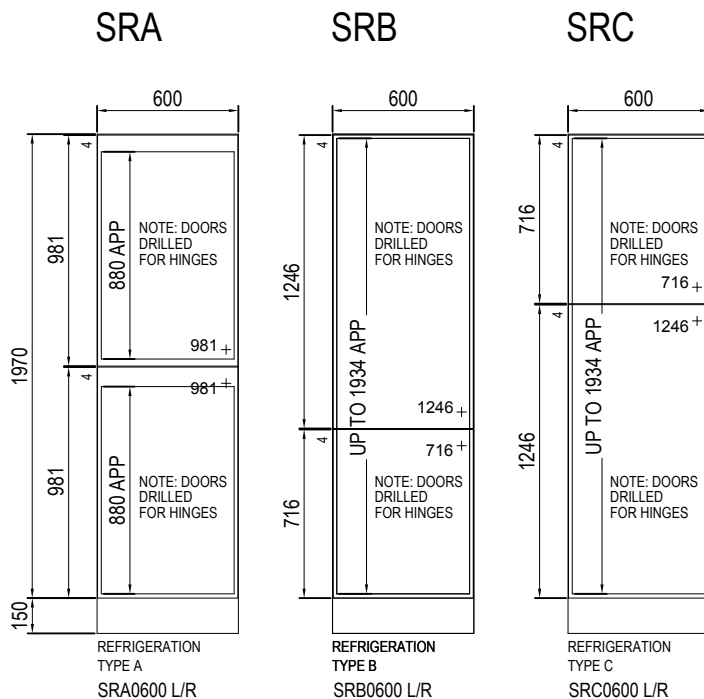
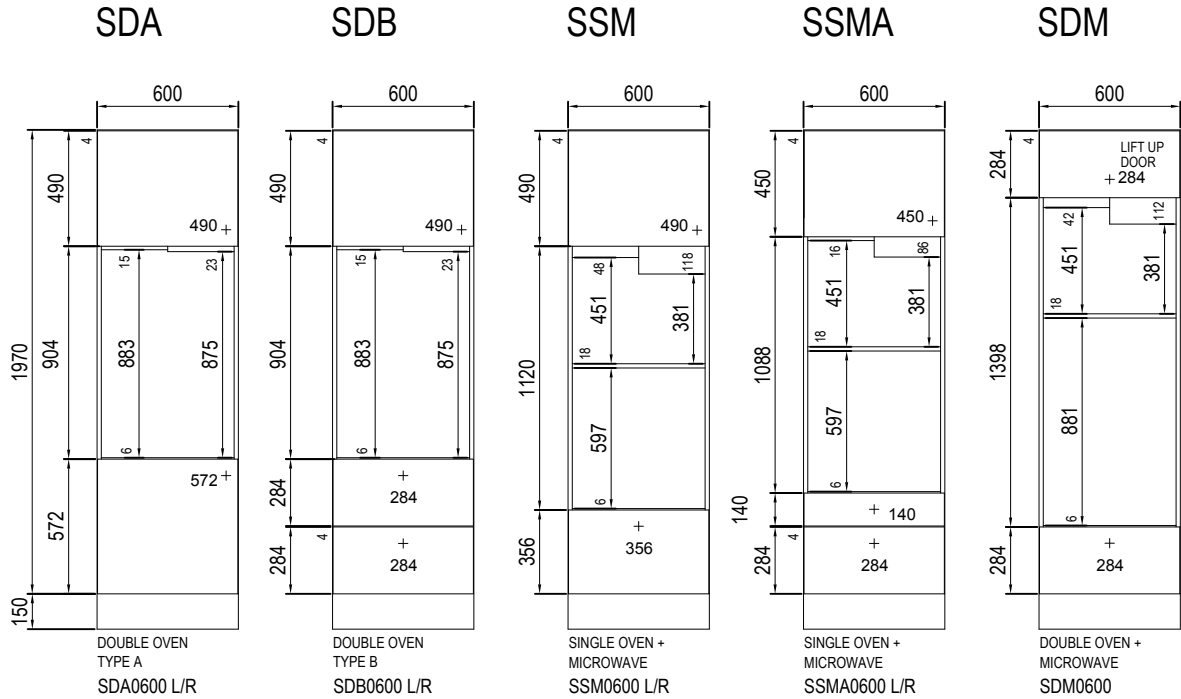
"ALLOW 30mm WHEN PLANNING BETWEEN TALL UNITS"



INTERMEDIATE PROFILE
ARE USED BETWEEN TALL UNITS
WHERE 2 x OPENING DOORS MEET



END PROFILE
ARE USED BETWEEN TALL UNITS WHERE
THERE IS 1 x OPENING DOOR TO ONE SIDE



REFRIGERATION HOUSINGS FOR USE WITH "FIXED HINGE" APPLIANCES

SR_C/CASE0600

1970 REFRIGERATION HOUSING
UN-DRILLED FOR HINGES

UNDRILLED DOOR PACKS

SRADOOR PACK 981 x 596 (x2 off)

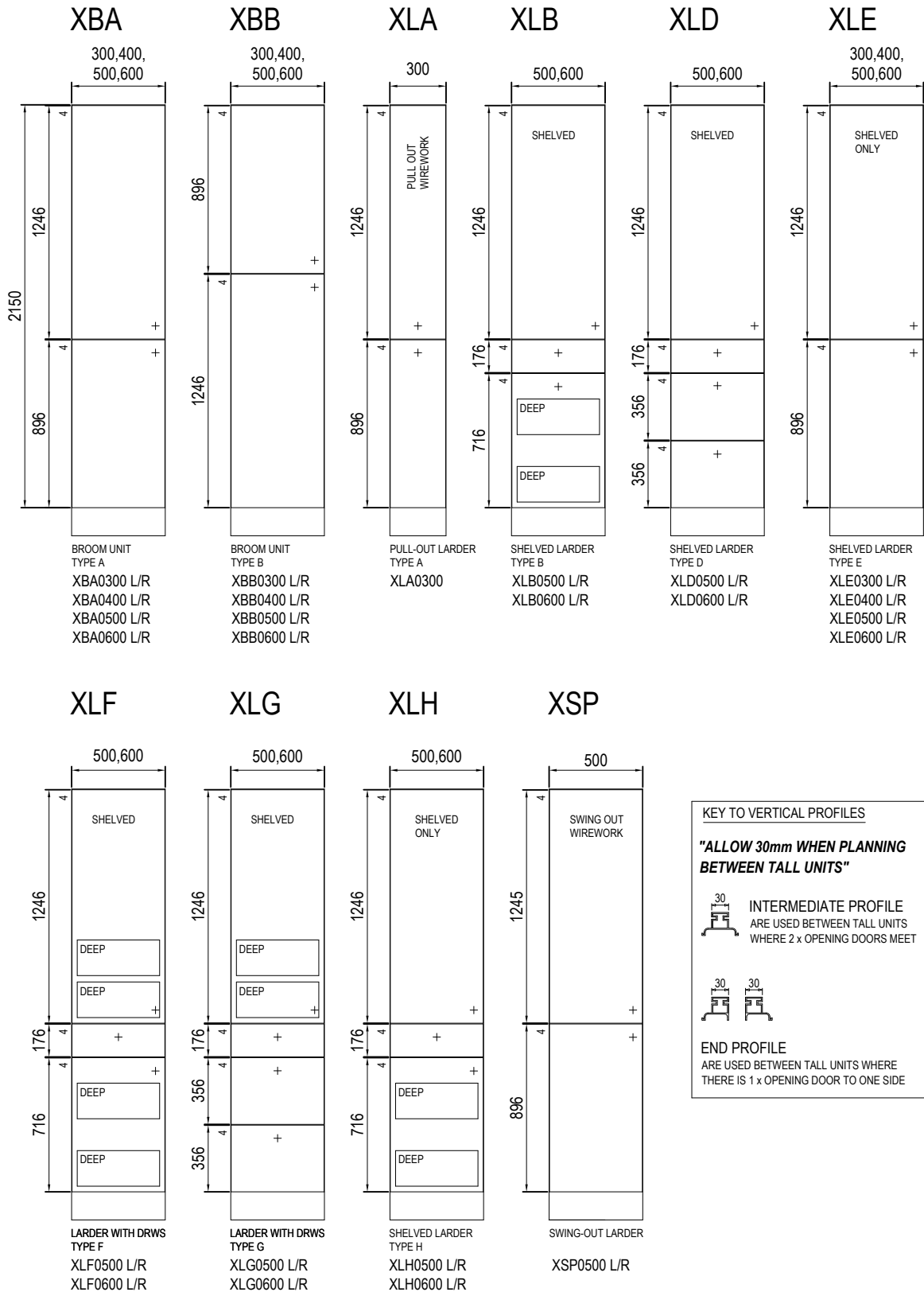
SRBDOOR PACK 1246 x 596
716 x 596

SRCDOOR PACK 1246 x 596
716 x 596

TO BE USED WITH A "SLIDING HINGE" APPLIANCE

Guide to Unit and Door Sizes: "SPA FIELDS" Range

BROOM & LARDER TALL UNITS, 2150mm H



HANDLELESS

Guide to Unit and Door Sizes: "SPA FIELDS" Range

APPLIANCE TALL UNITS, 2150mm H

OVEN APPLIANCE UNITS ARE SUPPLIED WITH A FACIA FILLER PANEL WHERE APPLICABLE.
PLEASE SPECIFY APPLIANCE MAKE & MODEL WHEN ORDERING.

KEY TO VERTICAL PROFILES

"ALLOW 30mm WHEN PLANNING BETWEEN TALL UNITS"

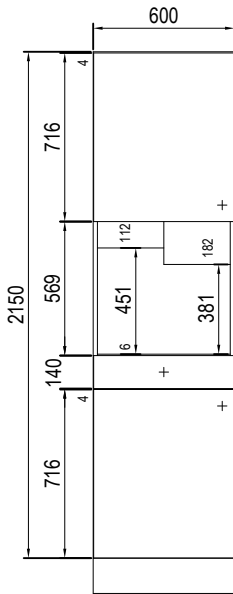


INTERMEDIATE PROFILE
ARE USED BETWEEN TALL UNITS
WHERE 2 x OPENING DOORS MEET



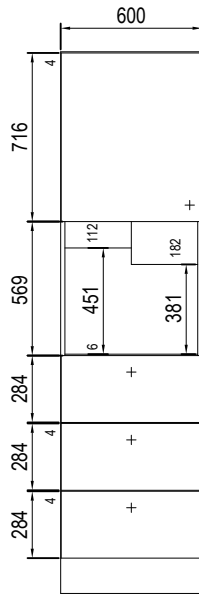
END PROFILE
ARE USED BETWEEN TALL UNITS WHERE
THERE IS 1 x OPENING DOOR TO ONE SIDE

XMA



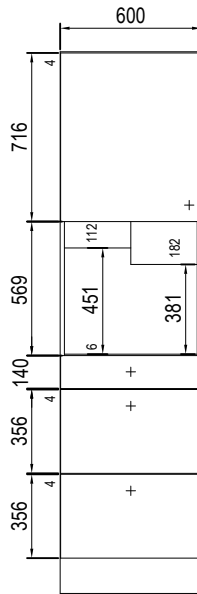
MICROWAVE
TYPE A
XMA0600 L/R

XMB



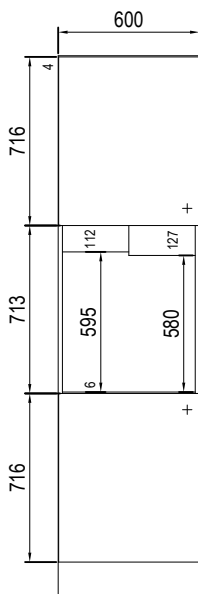
MICROWAVE
TYPE B
XMB0600 L/R

XMC



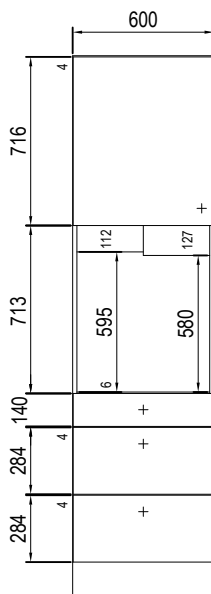
MICROWAVE
TYPE C
XMC0600 L/R

XSA



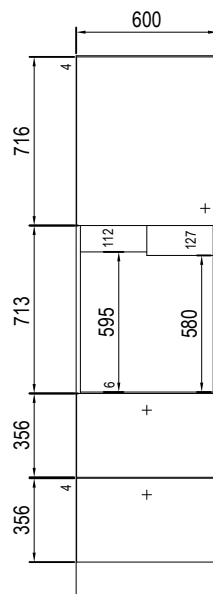
SINGLE OVEN
TYPE A
XSA0600 L/R

XSB



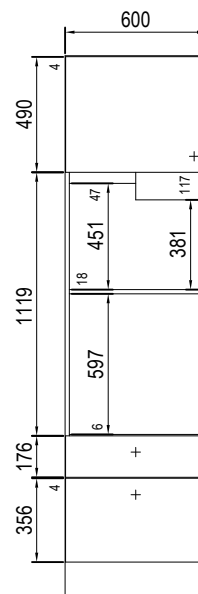
SINGLE OVEN
TYPE B
XSB0600 L/R

XSC



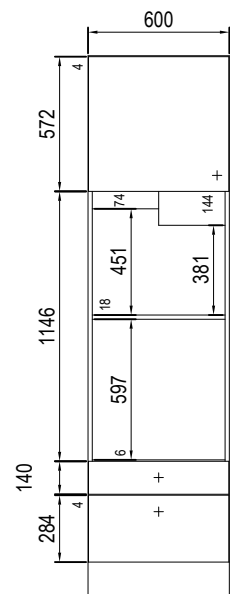
SINGLE OVEN
TYPE C
XSC0600 L/R

XSM



SINGLE OVEN +
MICROWAVE
XSM0600 L/R

XSMA



SINGLE OVEN +
MICROWAVE
XSMA0600 L/R

HANDLELESS

Guide to Unit and Door Sizes: "SPA FIELDS" Range

APPLIANCE TALL UNITS, 2150mm H

OVEN APPLIANCE UNITS ARE SUPPLIED WITH A FACIA FILLER PANEL WHERE APPLICABLE.
PLEASE SPECIFY APPLIANCE MAKE & MODEL WHEN ORDERING.

KEY TO VERTICAL PROFILES

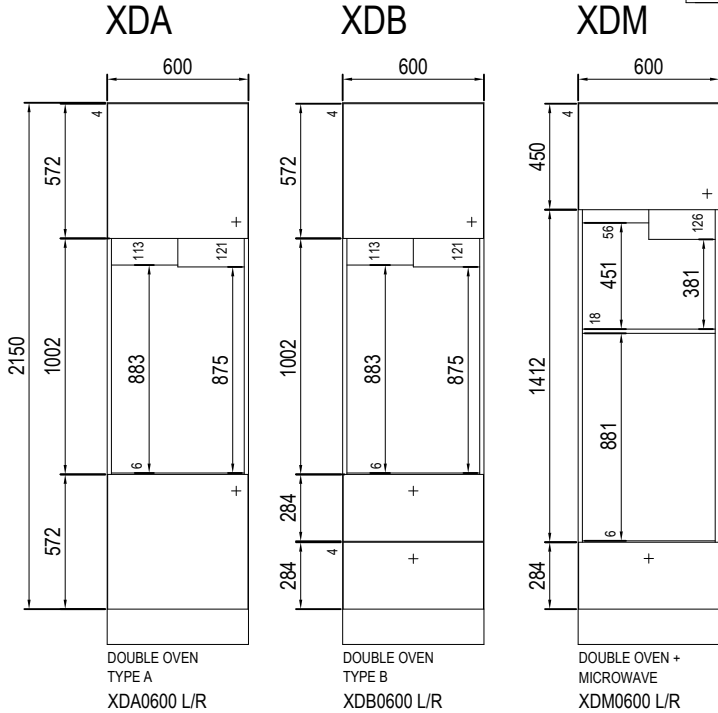
"ALLOW 30mm WHEN PLANNING BETWEEN TALL UNITS"



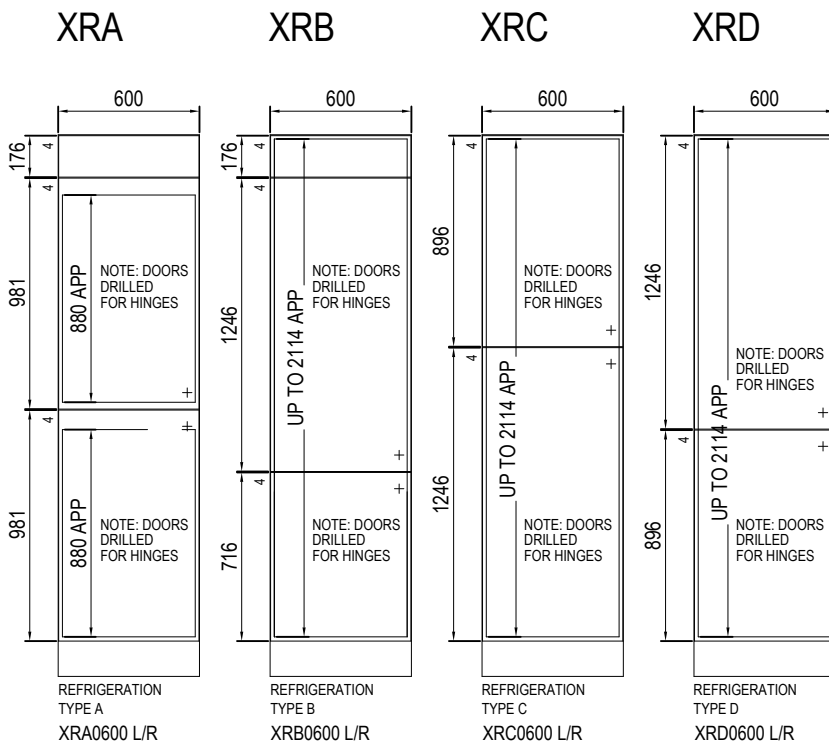
INTERMEDIATE PROFILE
ARE USED BETWEEN TALL UNITS
WHERE 2 x OPENING DOORS MEET



END PROFILE
ARE USED BETWEEN TALL UNITS WHERE
THERE IS 1 x OPENING DOOR TO ONE SIDE



NOTE: ALWAYS CHECK FRIDGE "HINGE TYPE" BEFORE ORDERING FRIDGE UNITS



REFRIGERATION HOUSINGS FOR USE WITH "FIXED HINGE" APPLIANCES

XR_C/CASE0600

2150 REFRIGERATION HOUSING
UN-DRILLED FOR HINGES

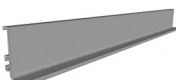
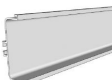
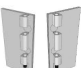




UNDRILLED DOOR PACKS

XRADOOR PACK	981 x 596 (x2 off)
	176 x 596
XRBDOR PACK	1246 x 596
	716 x 596
	176 x 596
XRCDOOR PACK	1246 x 596
	896 x 596
XRDDOR PACK	1246 x 596
	896 x 596



TO BE USED WITH A "SLIDING HINGE" APPLIANCE

Listed below are the parts available for use with a Handless Kitchen. These parts are supplied by Daval and vary job by job as each kitchen is different. Please refer to their page numbers for fitting information.

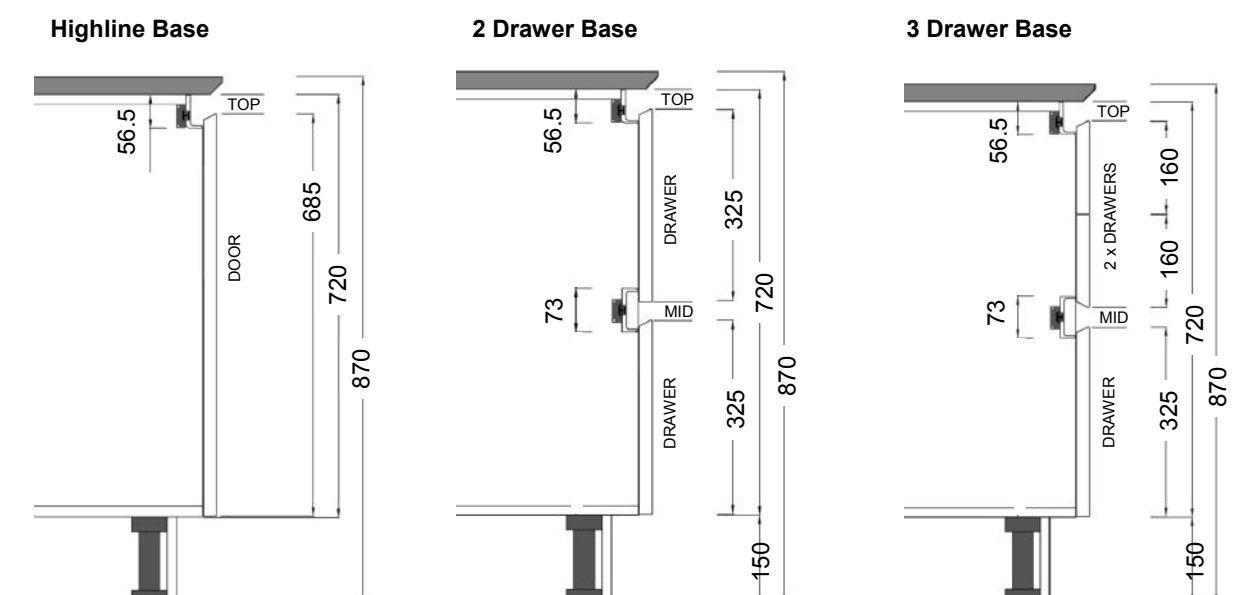
		Handless kitchens are available in ALUMINIUM (AM) or ANTHRACITE GREY (AG) <i>Specify colour choice when ordering.</i>
AM ALUMINIUM	AG ANTHRACITE GREY	

Top Rail Profile, End Caps & Corner Joints	Mid Rail Profile & End Caps
 250-352 Top Rail Profile, 56.5mm h, page 2	 250-357 Mid Rail Profile, 73mm h, page 5
 250-353 Top Rail End Caps (Pair), page 2	 250-358 Mid Rail End Caps (Pair), page 5
 250-354 Top Rail External Corner Joint, page 4	Securing Brackets for Top & Mid Rails
 250-355 Top Rail Internal Corner Joint, page 4	 250-359 Securing Brackets, page 8

Also refer to Page 3 for Dishwasher & Built Under Oven Applications.

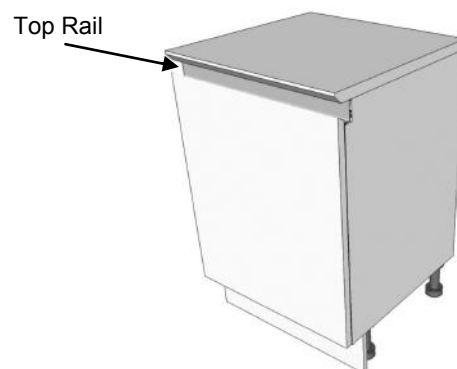
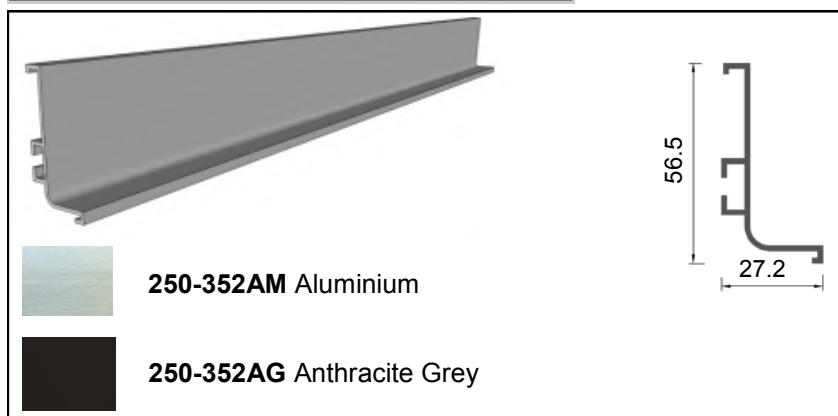
Vertical Profiles	
 250-350 Vertical Profile (Intermediate), 66.6mm w, page 6 <u>Used where 2 x opening doors meet</u>	 250-351 Vertical Profile (Lateral End), 48.3mm w, page 7 <u>Used where there is 1 x opening door and end panel/post</u>

Base Cabinet Sectional Elevation showing Top & Mid Rail Profiles



Note: All diagrams are for illustration purposes only

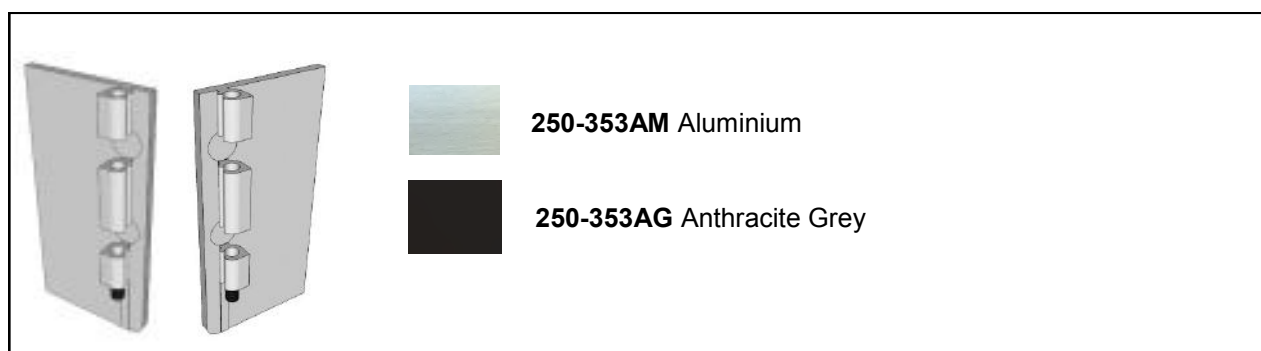
For Technical Assistance please contact our Technical Team on 01484 848500

Top Rail Profile 250-352


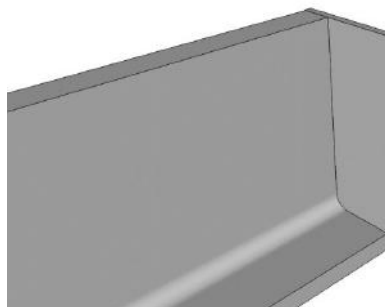
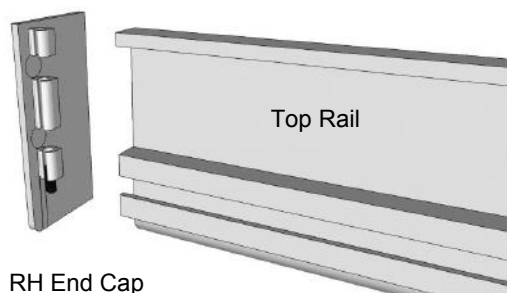
The Top Rail Profile (250-352) is positioned to the top of a base unit (as shown above).

This profile runs into Top Rail End Caps (250-353), Top Rail Internal Corner Joints (250-355) and Top Rail External Corner Joints (250-354) if used. The top rail profile is available to be supplied in lengths up to 4.1m.

See Page 8 for Top Rail fitting notes.

Top Rail End Caps (Pair) 250-353


Top Rail End Caps can be used when The Top Rail Profile (250-352) trims come to an end (e.g. against an end panel or next to appliances), A screw is supplied to attach the End Cap firmly to the rail..



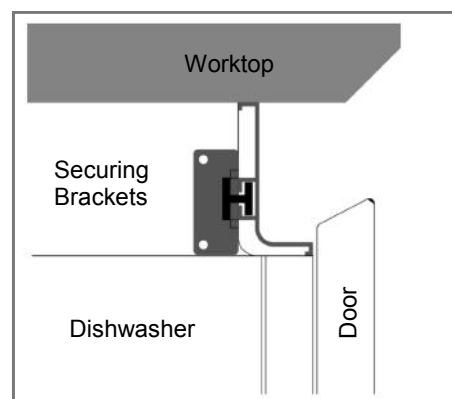
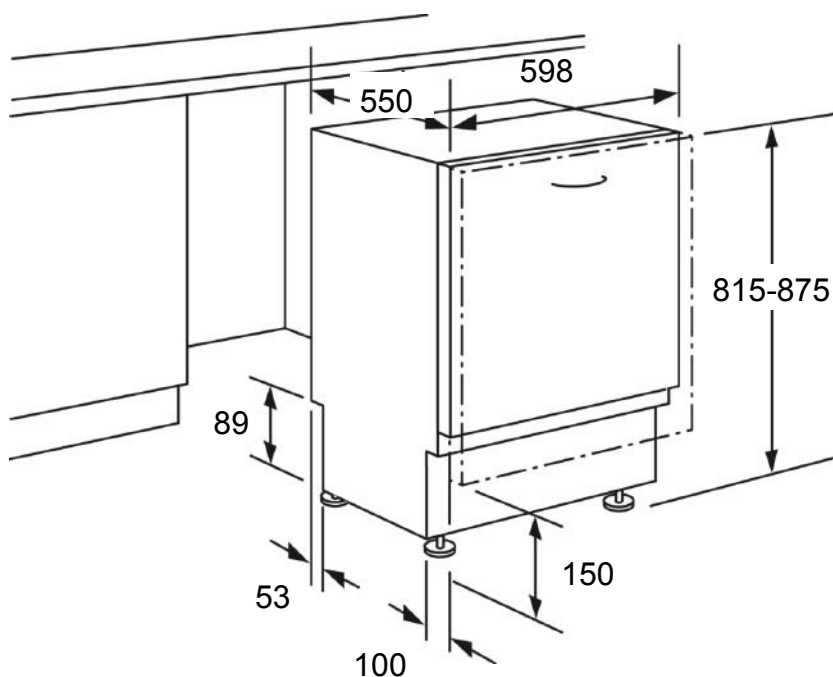
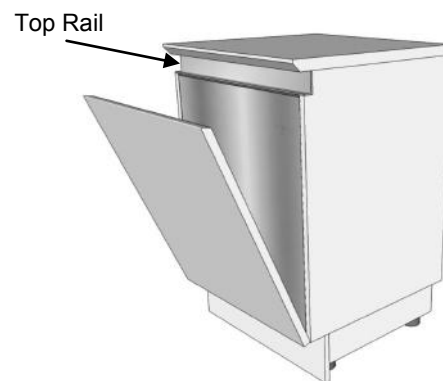
Please note when using end caps, a 2mm spacing must be taken into account (when cutting down the trim).

Note: All diagrams are for illustration purposes only

For Technical Assistance please contact our Technical Team on 01484 848500

Dishwasher Application

The top rail is used when planning a dishwasher. A 815-875mm fully integrated dishwasher needs to be used for this application and will allow for sufficient height adjustment to sit under the rail.



The Metal brackets (supplied with dishwasher) should be fixed to the outer face of adjacent cabinets. Please Note: an additional bracing baton may be required to the rear of the machine to help reduce movement

Under-mounted Oven Application

A top rail profile cannot be used in conjunction with an under-mounted oven. Rails must stop on each side of the appliance. They can be finished with top rail end caps (250-353). Depending on the design of the oven, end panels will need to be fitted either side of the appliance and the rail profile terminated against the panel.



Note: All diagrams are for illustration purposes only

For Technical Assistance please contact our Technical Team on 01484 848500

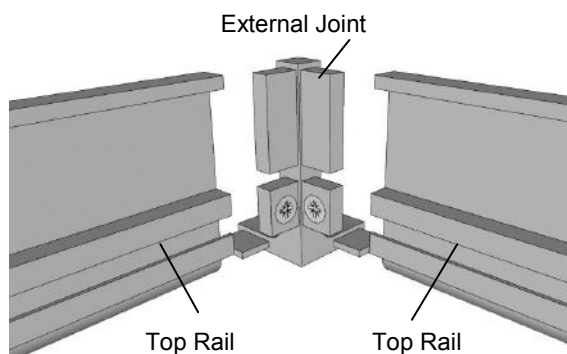
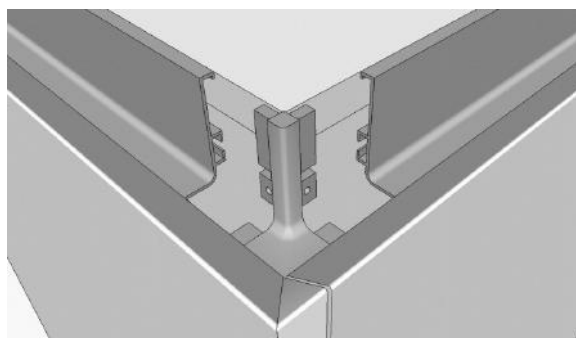
External Corner Joint 250-354



250-354AM = Aluminium



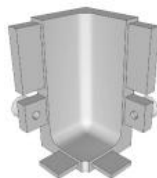
250-354AG = Anthracite Grey



The External Corner Joint (250-354) is used with the Top Rail Profile when running the profile around a Base or Island End Block BEB. This joint is supplied fitted to these End Blocks as standard. The External Corner Joint section is supplied with two screws, which when in position, secure the joint firmly to the rail profiles.

See Page 8 for Top Rail fitting notes.

Internal Corner Joint 250-355



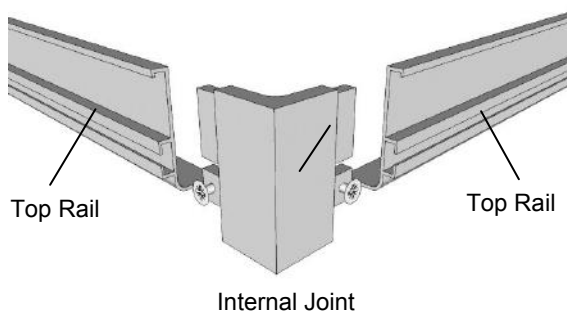
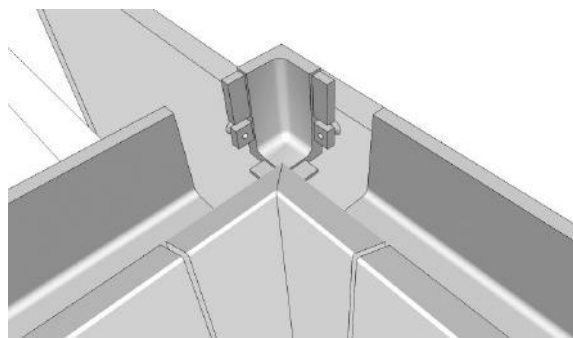
250-355AM = Aluminium



250-355AG = Anthracite Grey

The Internal Corner Joint (250-355) is used with the Top Rail Profile when applying a corner post or internal corner doors and connects into two Top Rail Profiles. The Internal Corner Joint section is supplied with two screws, which when in position secure the joint to the top rail profiles.

See Page 8 for top rail fitting notes.



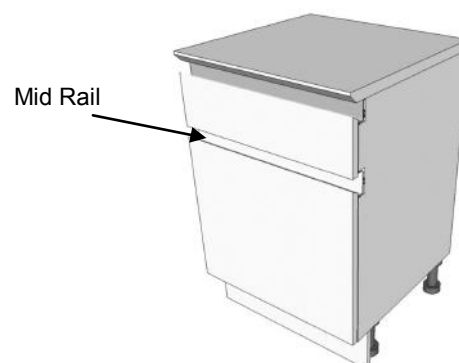
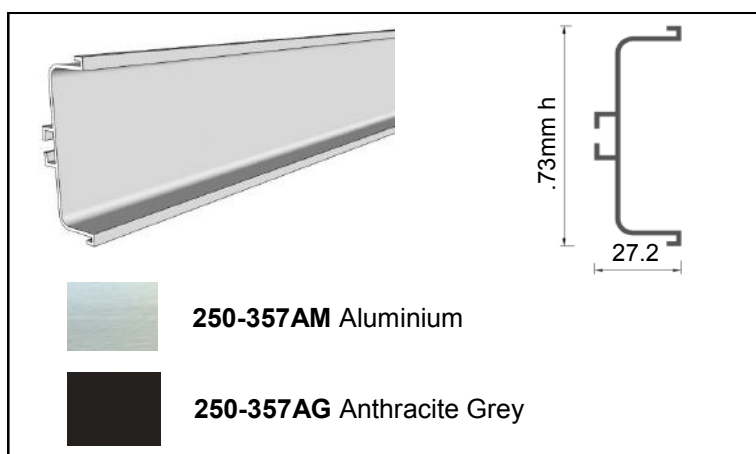
250-355

Top Rail Internal Corner Joint

Note: All diagrams are for illustration purposes only

For Technical Assistance please contact our Technical Team on 01484 848500

Mid Rail Profile 250-357



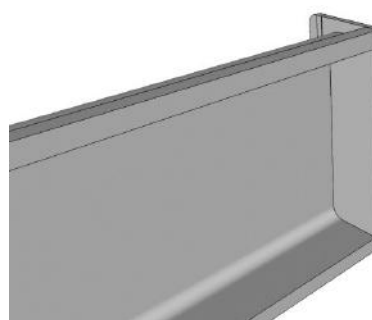
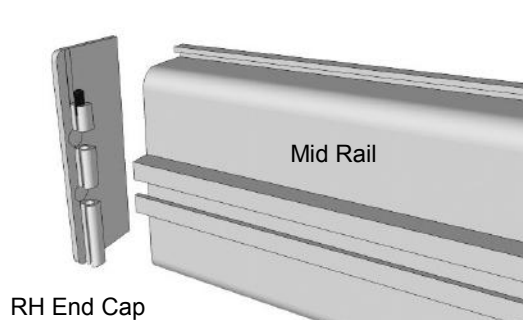
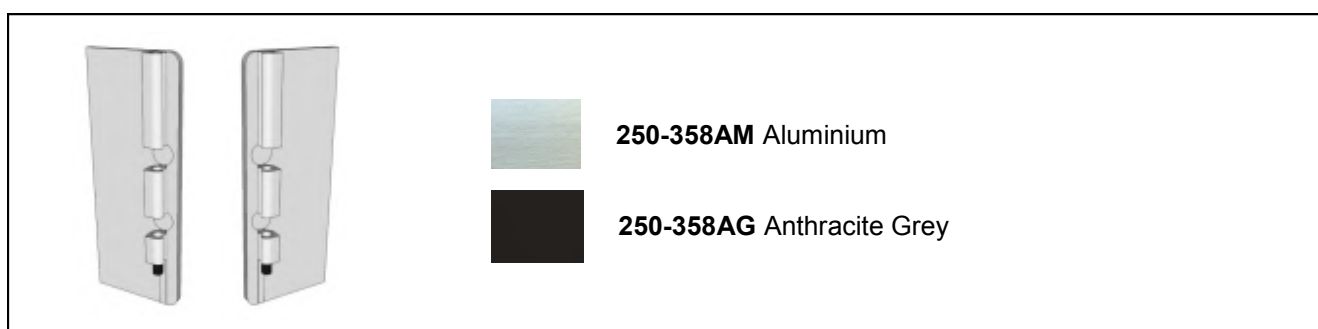
The Mid Rail Profile (250-357) is positioned to the middle of a base unit (as shown above).

This profile runs into End Caps (250-358). The mid rail profile is available to be supplied in lengths up to 4.1m.

See Page 8 for Mid Rail fitting notes.

Mid Rail End Caps (Pair) 250-358

Mid Rail End Caps can be used when the Mid Rail Profile (250-357) trims come to an end (e.g. against a end panel or next to appliances). A screw is supplied to attach the End Cap firmly to the rail.

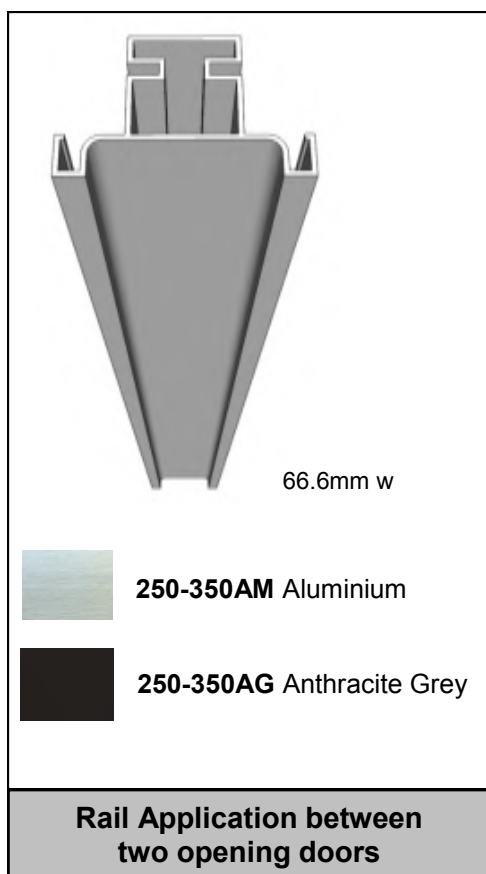


Please note when using end caps, a 2mm spacing must be taken into account (when cutting down the trim).

Note: All diagrams are for illustration purposes only

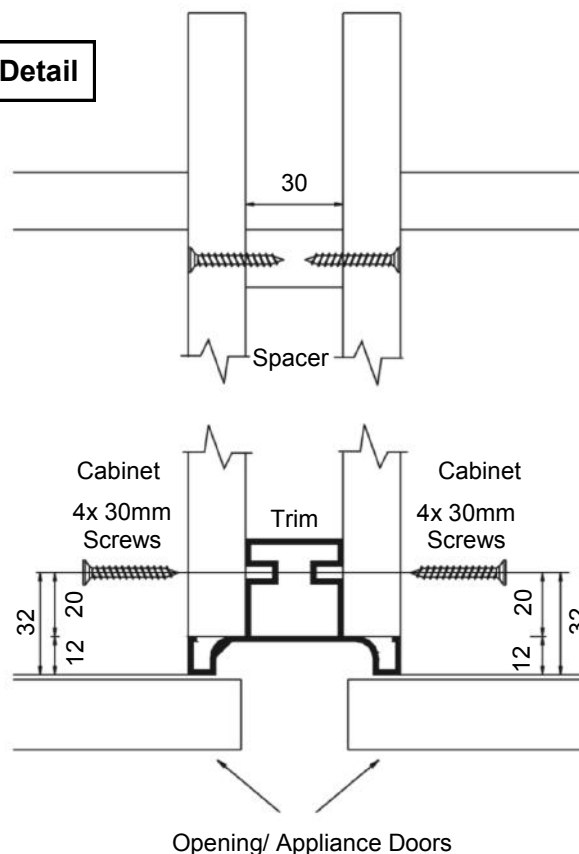
For Technical Assistance please contact our Technical Team on 01484 848500

Vertical Profile (Intermediate) 250-350

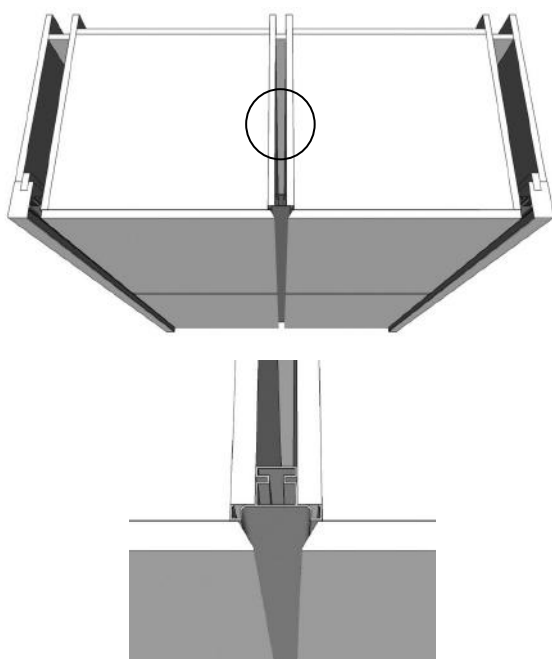


The Vertical Profile (Intermediate) (250-350) is positioned between Mid/Tall Height Units where 2 x opening doors meet (as shown below).

Fitting Detail



Please note: Try to position the screw holes in the cabinet so they are concealed (such as behind the hinge plates) when internal components are added. positioned between mid and/or Tall Height Units where hinges meet (as shown below).



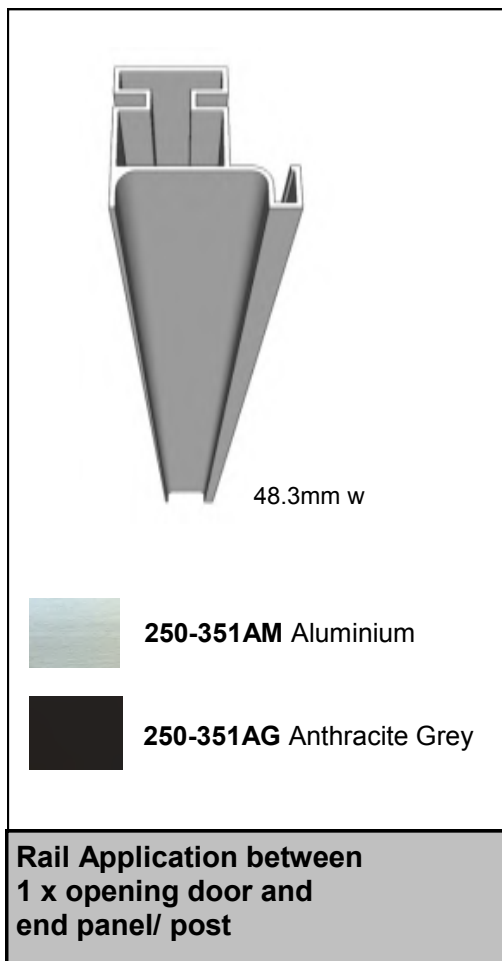
When joining cabinets in larger runs, a spacer is needed at the back to maintain the **30mm void** created by the trim profile. The spacer is screw fixed to the cabinets from the inside of each cabinet.

Note: All diagrams are for illustration purposes only

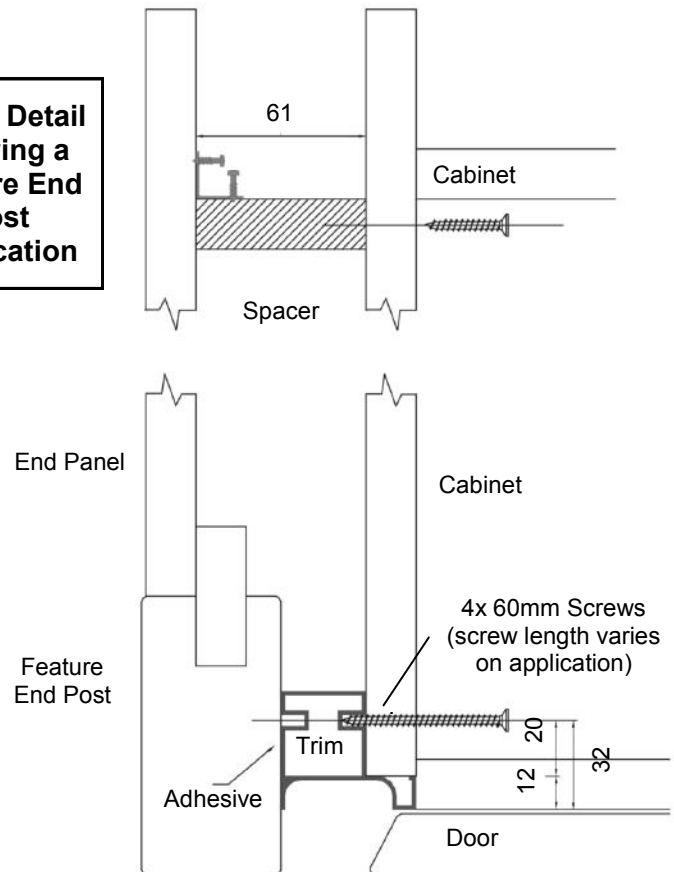
For Technical Assistance please contact our Technical Team on 01484 848500

Vertical Profiles (Lateral End) 250-351

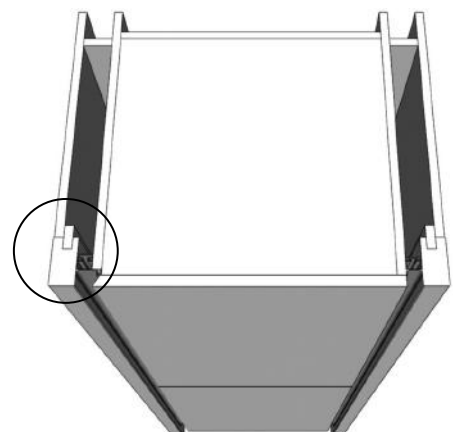
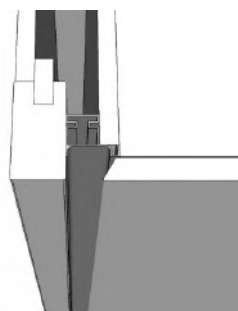
The Vertical Profile (Lateral End) (250-351) is positioned between Mid or Tall Height Units where there is 1 x opening door and end panel/post (as shown below).



Fitting Detail showing a Feature End Post Application



Please note: Try to position the screw holes in the cabinet so they are concealed (such as behind the hinge plates) when internal components are added. positioned between mid and/or Tall Height Units where hinges meet (as shown below).

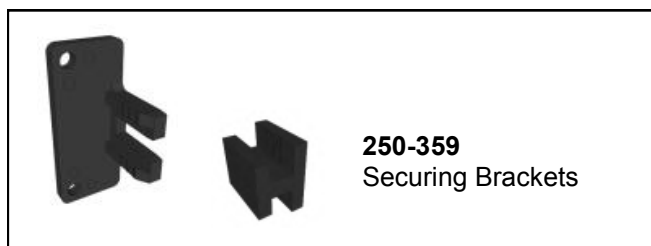


When joining cabinets in larger runs, a spacer is needed at the back to maintain the **30mm void** created by the trim profile. The spacer is screw fixed to the cabinets from the inside of each cabinet.

Note: All diagrams are for illustration purposes only

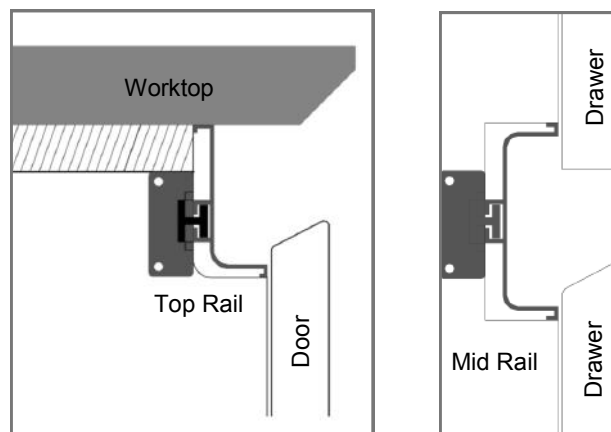
For Technical Assistance please contact our Technical Team on 01484 848500

Securing Brackets for Top and Mid Rail

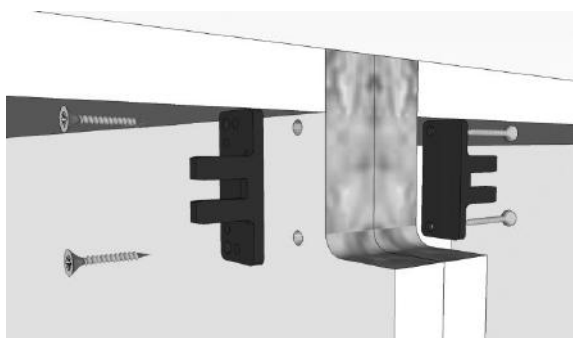


Securing brackets (250-359) are required to fit both top and mid rail profiles to cabinets.

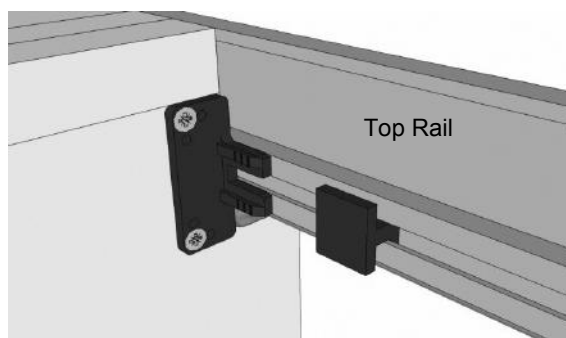
Fitted Rail Detail



Fitting Top Rail Profiles

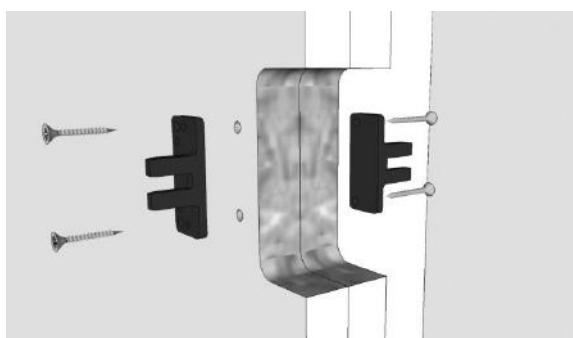


Securing Mounting Brackets into place into pre-drilled holes.

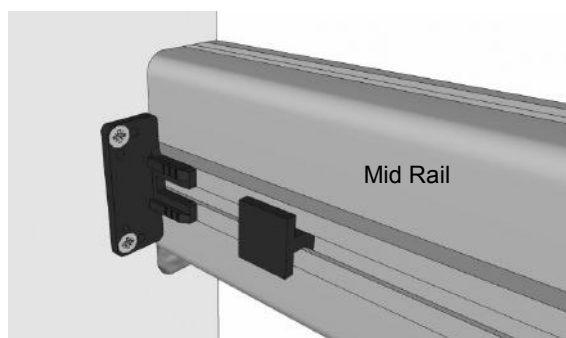


Slide "H" connector into runner on back of Top Rail trim, sit rail on routed gable ends and slide connector to clip into the securing bracket and hold rail in place.

Fitting Mid Rail Profiles



Securing Mounting Brackets into place into pre-drilled holes.



Slide "H" connector into runner on back of Mid Rail trim, sit rail on routed gable ends and slide connector to clip into the securing bracket and hold rail in place.

Note: All diagrams are for illustration purposes only

For Technical Assistance please contact our Technical Team on 01484 848500