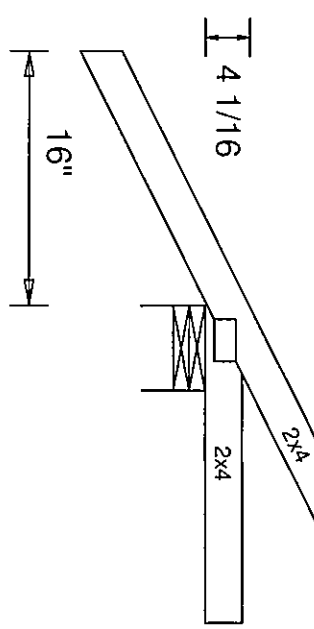


FRAME DOWN BY G.C.
AS REQUIRED FOR COFFER

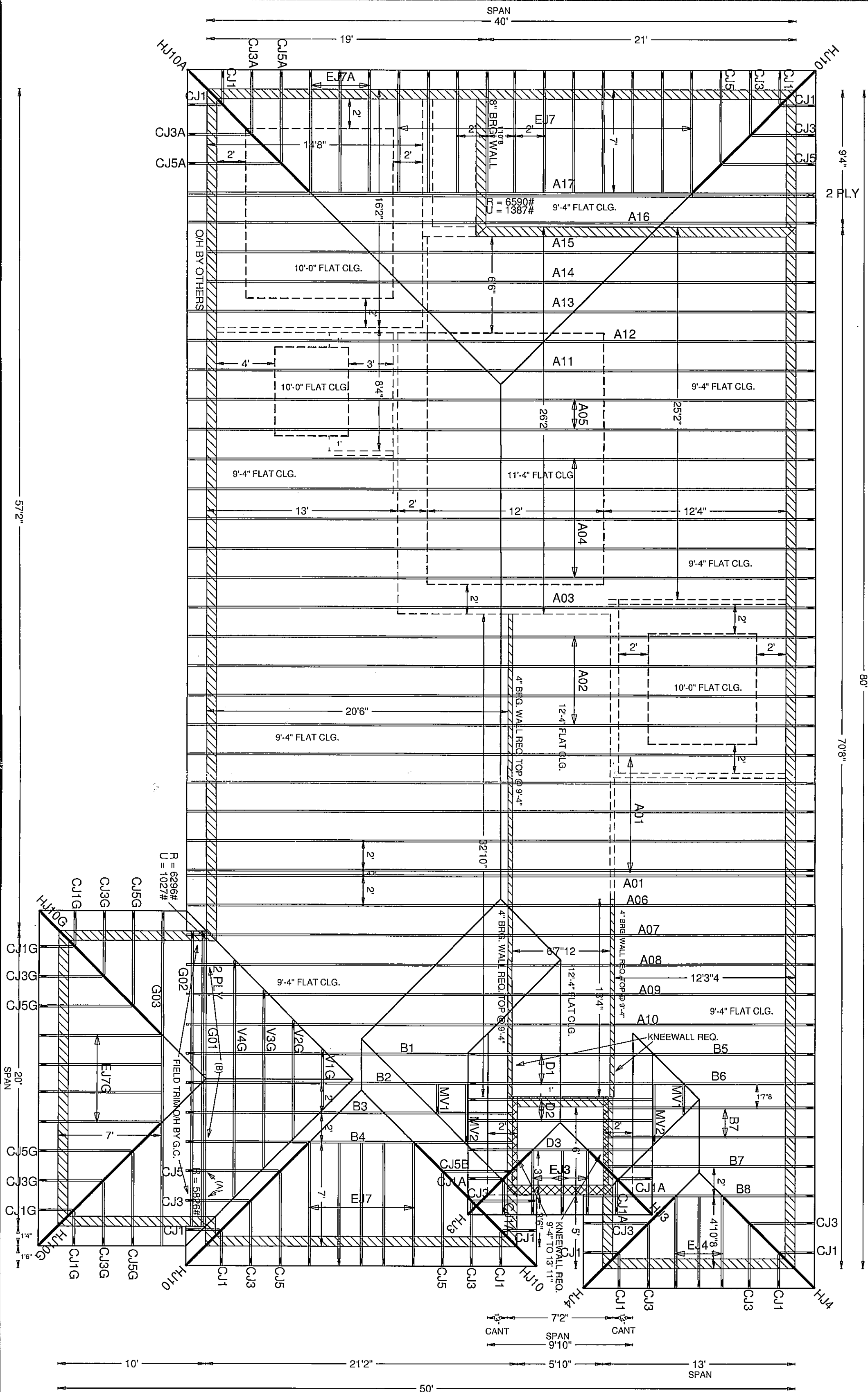
ALL JAMBS AND ENTRIES ARE
DESIGNED PARTIALLY ENCLOSED
AS REQ BY ENGINEERING

STRUCTURAL FASGIA BY G.C.
AS REQ BY ENGINEERING

Engineer of Record for the Structure
Structural Systems of N. Fl. Inc.
Derek Bergman, PE # 58552
1634 SE 47th Street
Cape Coral, FL 33904
Date: 10/10/13
Required for compliance with the design intent
of the structure and specified design criteria.
☐ Accepted ☐ Revise and
Resubmit
As noted
As is



BEARING KEY
9'-4" A.F.F.
19'-11" A.F.F.



(A)=HUS24
(B)=HUS26
(C)=HUS28
(D)=HUS28-2
(E)=HUS28-2
(F)=HUS28-2
(G)=HUS28-2
(H)=HUS28-2
(I)=HUS28-2
(J)=HUS28-2
(K)=HUS28-2
(L)=HUS28-2
(M)=HUS28-2
(N)=HUS28-2
(O)=HUS28-2
(P)=HUS28-2
(Q)=HUS28-2
(R)=HUS28-2
(S)=HUS28-2
(T)=HUS28-2
(U)=HUS28-2
(V)=HUS28-2
(W)=HUS28-2
(X)=HUS28-2
(Y)=HUS28-2
(Z)=HUS28-2

Design Criteria
MWFRS and COMPONENTS & CLADDING
Wind Load Type : ASCE 7-10
Building Type : Enclosed
Building Exposure : B
Usage : Cat II Residential 1.0
Bottom Chord Analyzed with 10 PSF Non-Concurrent
Live Load and 20 PSF Concurrent Live Load on
Trusses Designed with Storage as Specified on
Layout See Shop Drawings for Specifics.

GRAVITY
TC DL 20 PSF
BC DL 5 PSF
TOTAL 25 PSF

WIND
TC DL 5 PSF
BC DL 5 PSF
TOTAL 10 PSF

DURATION= 1.25 WIND = 160 MPH

Spacing = 24 " O.C.

Your Signature Will Acknowledge:

- 1) Authorization for FABRICATION
- 2) Verification of ALL Dimensions, Conditions, and Materials to be used in the construction of the structure in accordance with this Placement Plan. It is YOUR responsibility to check this plan.
- 3) Erection of trusses per TPI Bulletin BCS181
- 4) ALL permanent and temporary bracing, is CONTRACTOR'S responsibility.
- 5) Any Valleys or Ceiling drops NOT provided by Truss Plant are to be FIELD FILLED by Contractor.
- 6) Truss Plant supplies only TRUSS to TRUSS Connections.
- 7) NO back changes or crane changes of any kind will be accepted unless SPECIFICALLY approved in writing by Truss Plant Management.
- 8) Hip, Leaks & Corner Leaks are POLYURETHANE applied @ 45° angles referring an angle other than this are to be out in field by OTHERS.

Signed:

Date: _____

Return One Approved Placement Plan

Schedule in the field

and return to the plant

within 10 days

of completion

of the structure

or as directed

by the plant

management

in writing

or as directed

by the plant

management

in writing

or as directed

by the plant

management

in writing

or as directed

by the plant

management

in writing

or as directed

by the plant

management

in writing

or as directed

by the plant

management

in writing

or as directed

by the plant

management

in writing

or as directed

by the plant

management

in writing

or as directed

by the plant

management

in writing

or as directed

by the plant

management

in writing

or as directed

by the plant

management

in writing

or as directed

by the plant

management

in writing

or as directed

by the plant

management

in writing

or as directed

by the plant

management

in writing

or as directed

by the plant

management

in writing

or as directed

by the plant

management

in writing

or as directed

by the plant

management

in writing

or as directed

by the plant

management

in writing

or as directed

by the plant

management

in writing

or as directed

by the plant

management

in writing

or as directed

by the plant

management

in writing

or as directed

by the plant

management

in writing

or as directed

by the plant

management

in writing

or as directed

by the plant

management

in writing

or as directed

by the plant

management

in writing

or as directed

by the plant

management

in writing

or as directed

by the plant

management

in writing

or as directed

by the plant

management

in writing

or as directed

by the plant

management

in writing

or as directed

by the plant

management

in writing

or as directed

by the plant

management

in writing

or as directed

by the plant

management

in writing

or as directed

by the plant

management

in writing

or as directed

by the plant

management

in writing

or as directed

by the plant

management

in writing

or as directed

by the plant

management

in writing

or as directed

by the plant

management

in writing

or as directed

by the plant

management

in writing

or as directed

by the plant

management

in writing

or as directed

by the plant

management

in writing

or as directed

by the plant

management

in writing

or as directed

by the plant

management

in writing

or as directed

by the plant

management

in writing

or as directed

by the plant

management

in writing

or as directed

by the plant

management

in writing

or as directed

by the plant

management

in writing

or as directed

by the plant

management

in writing

or as directed

by the plant

management

in writing

or as directed

by the plant

management

in writing

or as directed

by the plant

management

in writing

or as directed

by the plant

management

in writing

or as directed

by the plant

management

in writing

or as directed

by the plant

management

in writing

or as directed

by the plant

management

in writing

or as directed

by the plant

management

in writing

or as directed

by the plant

management

in writing

or as directed

by the plant

management

in writing

or as directed

by the plant

management

in writing

or as directed

by the plant

management

in writing

or as directed

by the plant

management

in writing

or as directed

by the plant

management

in writing

or as directed

by the plant

management

in writing

or as directed

by the plant

management

in writing

or as directed

by the plant

management

in writing

or as directed

by the plant

management

in writing

or as directed

by the plant

management

in writing

or as directed

by the plant

management

in writing

or as directed

by the plant

management

in writing

or as directed

by the plant

management

in writing

or as directed

by the plant

management

in writing

or as directed

by the plant

management

in writing

or as directed

by the plant

management

in writing

or as directed

by the plant

management

in writing

or as directed

by the plant

management

in writing

or as directed

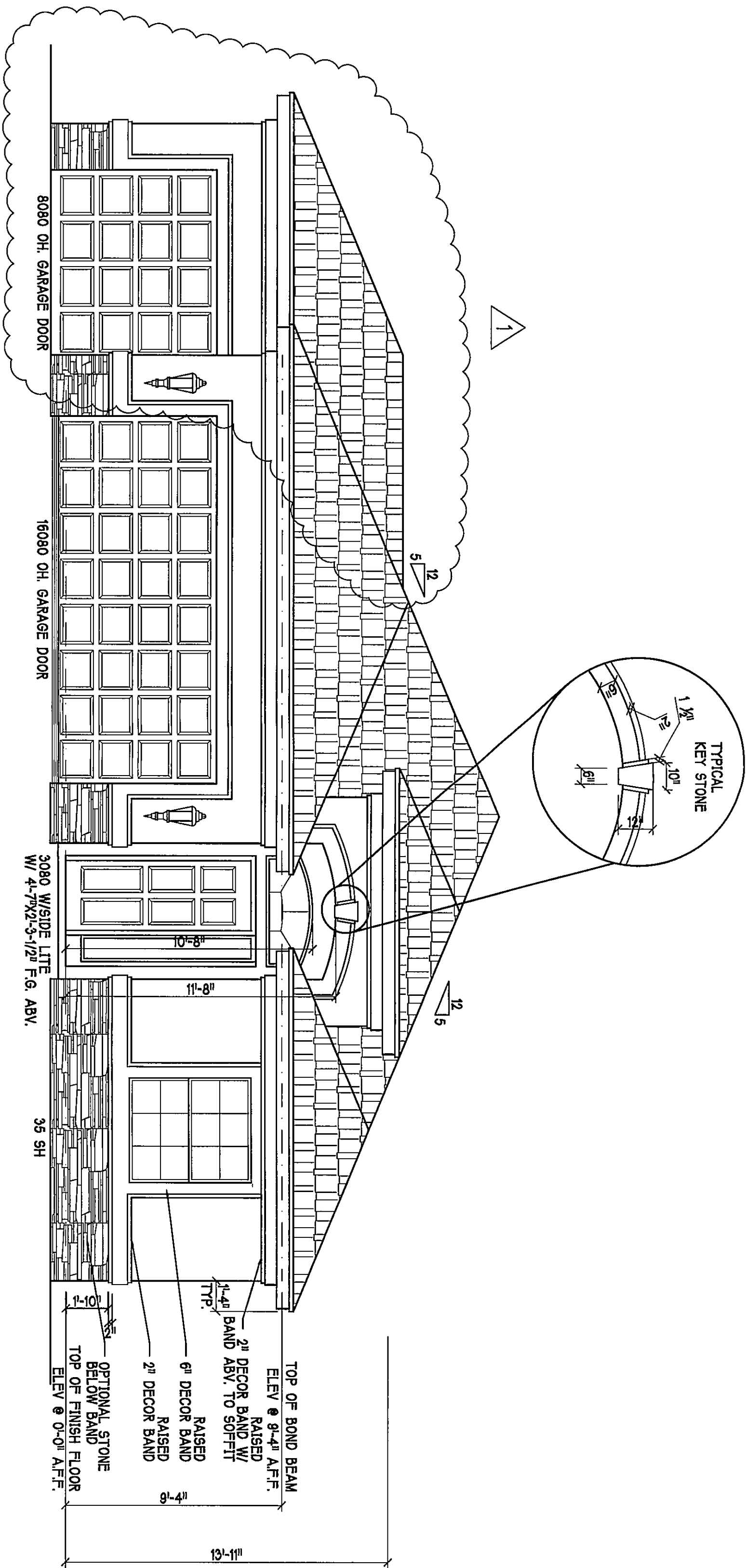
by the plant

management

in writing

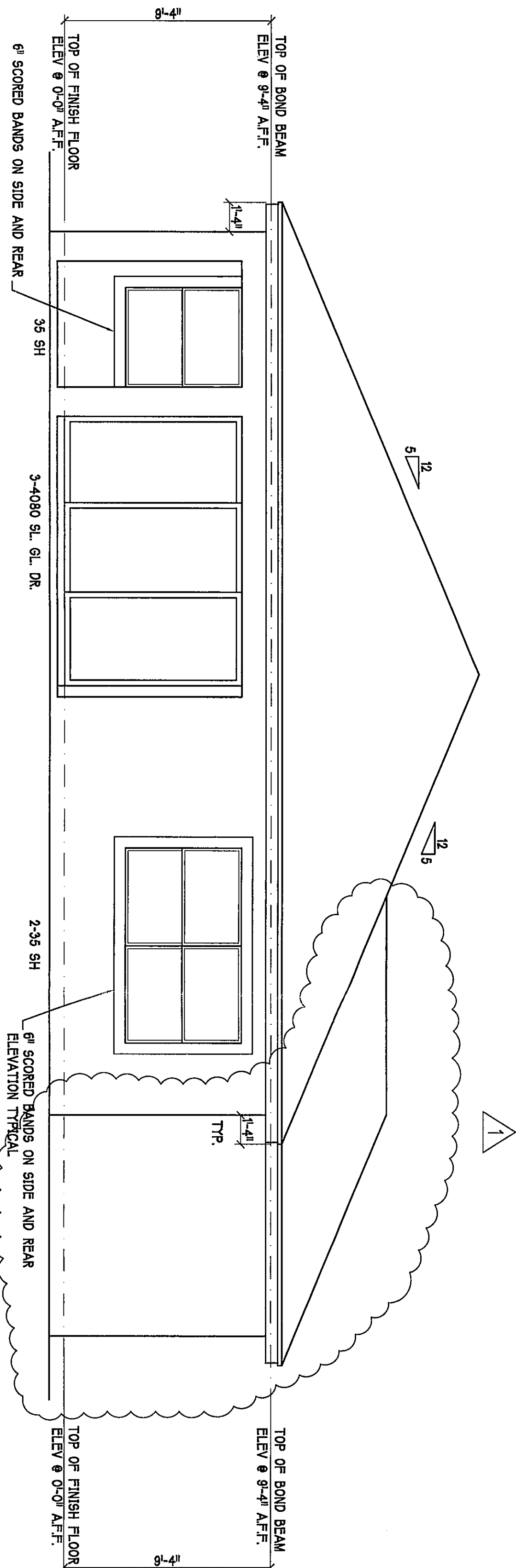
or as directed

by the plant



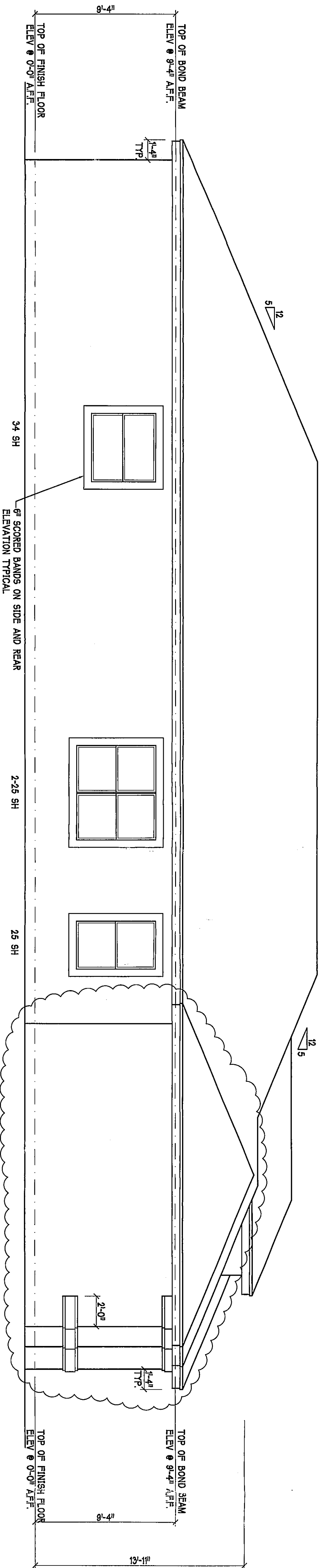
FRONT ELEVATION: "A"

SCALE: 1/4" = 1'-0"



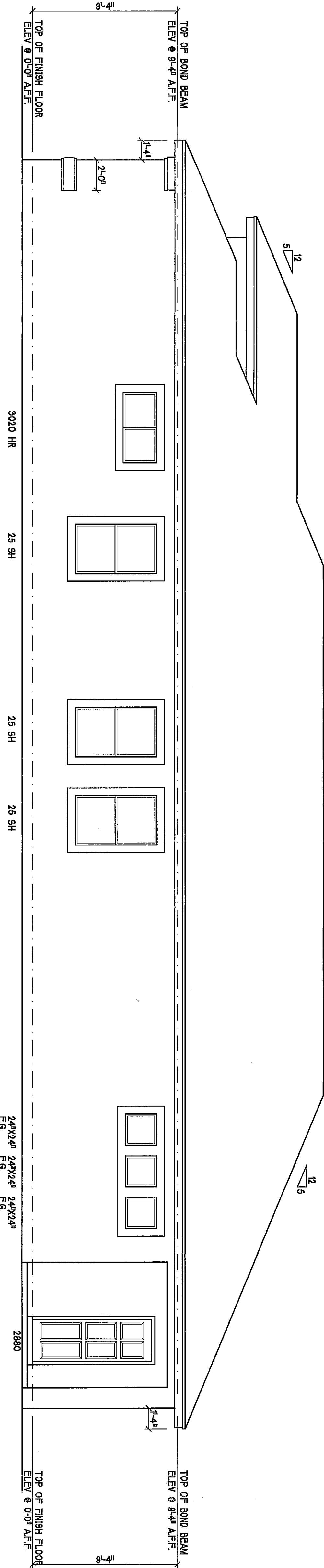
REAR ELEVATION: "A"

SCALE: 1/4" = 1'-0"



LEFT SIDE ELEVATION: "A"

SCALE: 1/4" = 1'-0"



RIGHT SIDE ELEVATION: "A"

SCALE: 1/4" = 1'-0"

DESIGNED BY: JWC
CHECKED BY: JWC
DATE: 10-8-2013
SCALE: 1/4" = 1'-0"

DATE:	8-19-13
DRAWN BY:	GCH
CHECKED BY:	JWC
REVISION:	10-8-2013
PLAN:	ELEVATIONS
SCALE:	1/4" = 1'-0"
SHEET#	A1-A

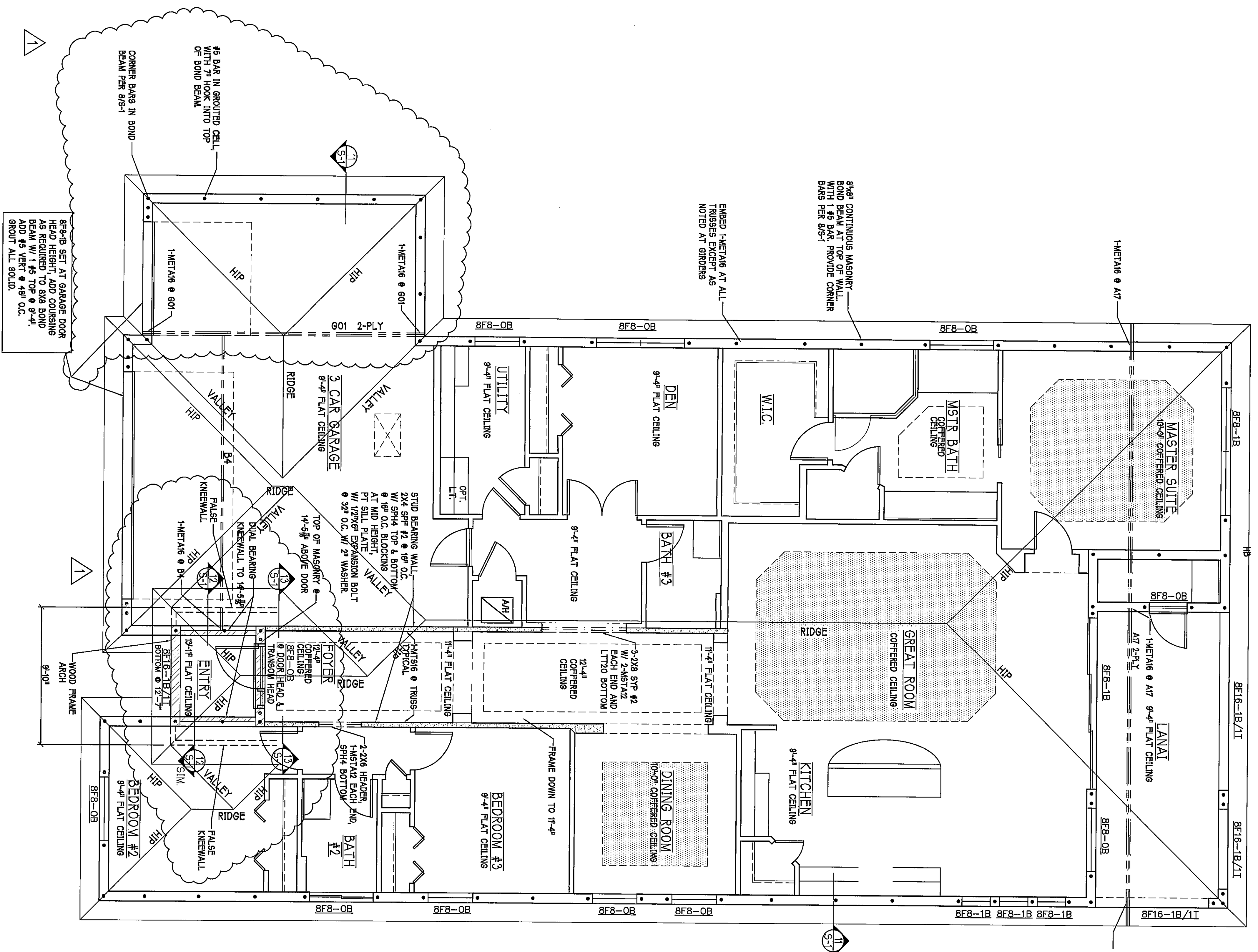
MODEL:	UNIT 2431
RESIDENCE FOR:	SPEC

LOT: 33	BLOCK :
SUBDIV: CELEBRATION CAPE	
ADDRESS: 283 DESTINY CIRCLE	
G.C.D. JOB #: 5061	

DESIGNED BY: JWC CHECKED BY: JWC DATE: 10-8-2013 SCALE: 1/4" = 1'-0"	STRUCTURAL ENGINEERING STRUCTURAL SYSTEMS OF NORTH FLORIDA 1634 SE 47th ST, SUITE #8 CAPE CORAL, FL 33904 (239) 549-4554 CA# 8829
---	--

Gulf Coast Drafting & Design Phone (239) 540-1822 Fax (239) 540-7759
--

D-R HORTON America's Builder



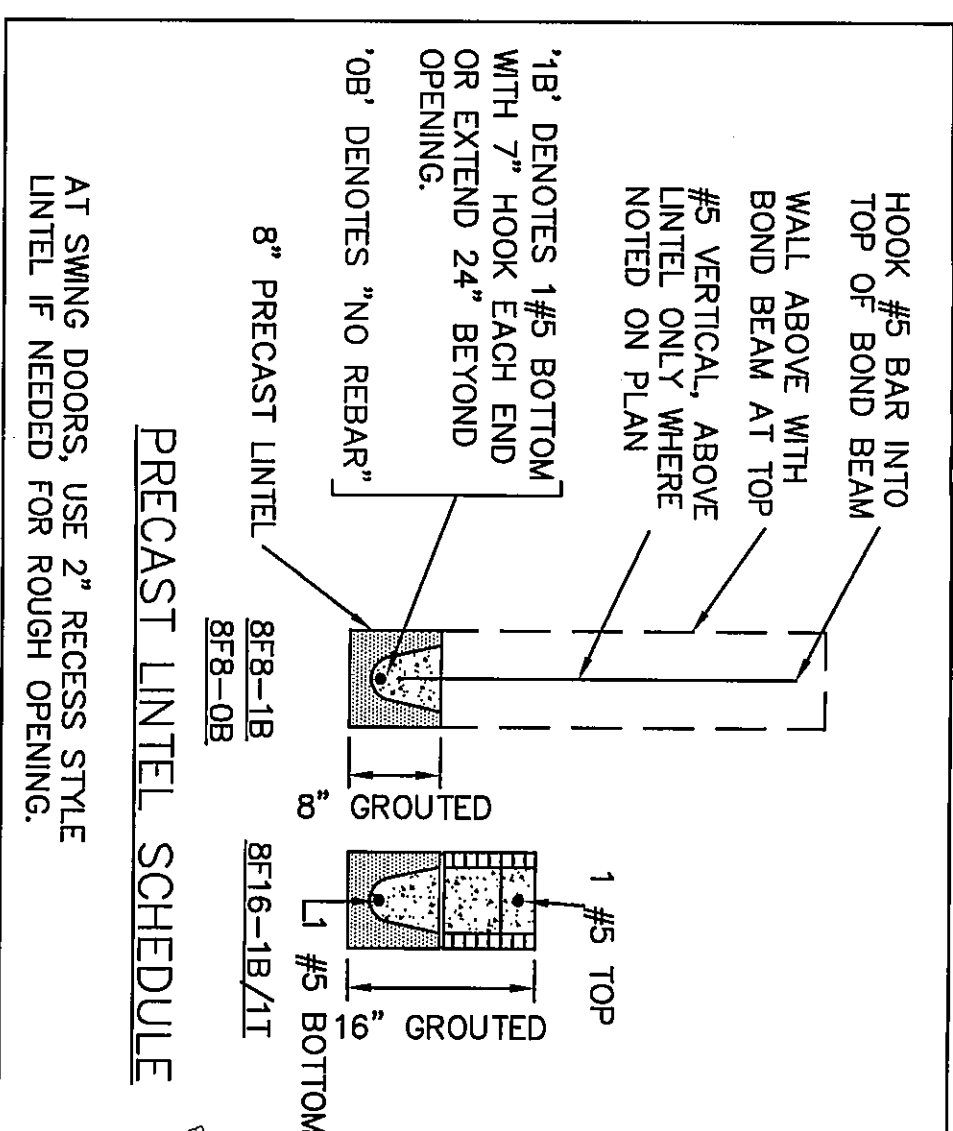
ROOF PLAN 1/4" = 1'-0"

ATTIC VENTILATION			
	WITHOUT OFF RIDGE VENTS	WITH OFF RIDGE VENTS	
ATTIC AREA	VENTILATION REQUIRED (ATTIC AREA 1/500)	VENTILATION REQUIRED (ATTIC AREA 1/500)	
3460 SQ. FT.	230 SQ. FT.	115 SQ. FT.	

TRUSS BEARING CONDITIONS AND STRAPPING IS BASED ON TRUSS LAYOUT PREPARED BY RAYMOND, JOB # 13073396, REVISED: 9/30/2013

BEARING HEIGHTS

- BEARING @ 9'-4" A.F.F.
- INTERIOR STUD BEARING @ 9'-4" A.F.F.
- BEARING @ 13'-1" A.F.F.



- PLAN NOTES:
- 1) ROOF TRUSS BEARING ELEVATION VARIES. SEE LEGEND.
 - 2) ROOF FRAMING SHALL BE WOOD TRUSSES DESIGNED BY A DELEGATED TRUSS ENGINEER PER DESIGN CRITERIA ON SHEET S-1.
 - 3) PROVIDE STRAPPING AT TRUSSES PER NOTES ON THIS SHEET.
 - 4) FOR RAISING OF ROOF DECK, SEE 1 AND 2 ON S-1.
 - 5) PRECAST LINTEL, PROVIDES PRECAST LINTEL ABOVE DOOR/WINDOW OPENING PER SCHEDULE THIS SHEET.
 - 6) AT TRUSS BEARING, PROVIDE 6x6 MASONRY BOND BEAM W/ 1 #5 CONTINUOUS. SEE DETAIL Z/A-6.

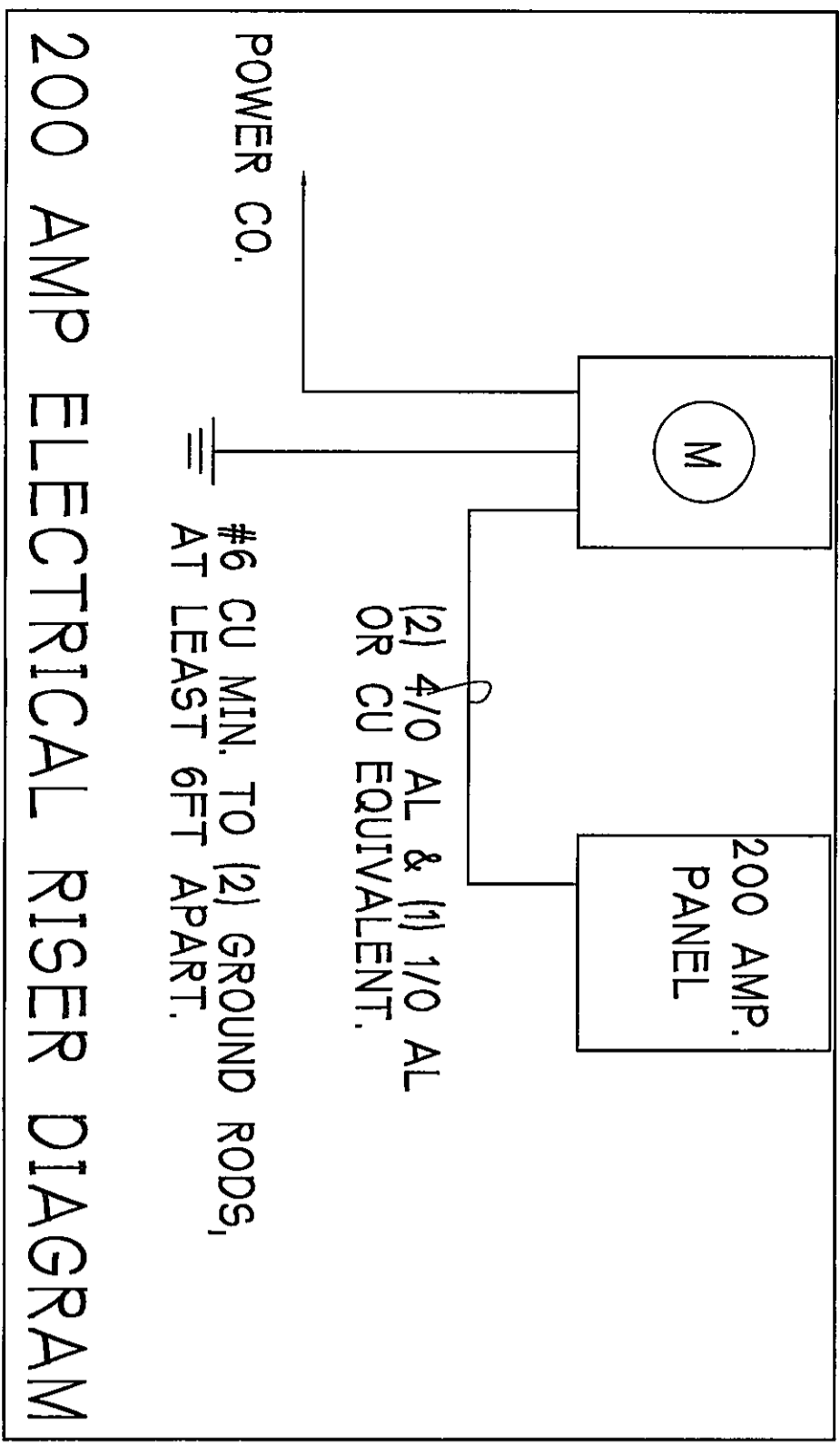
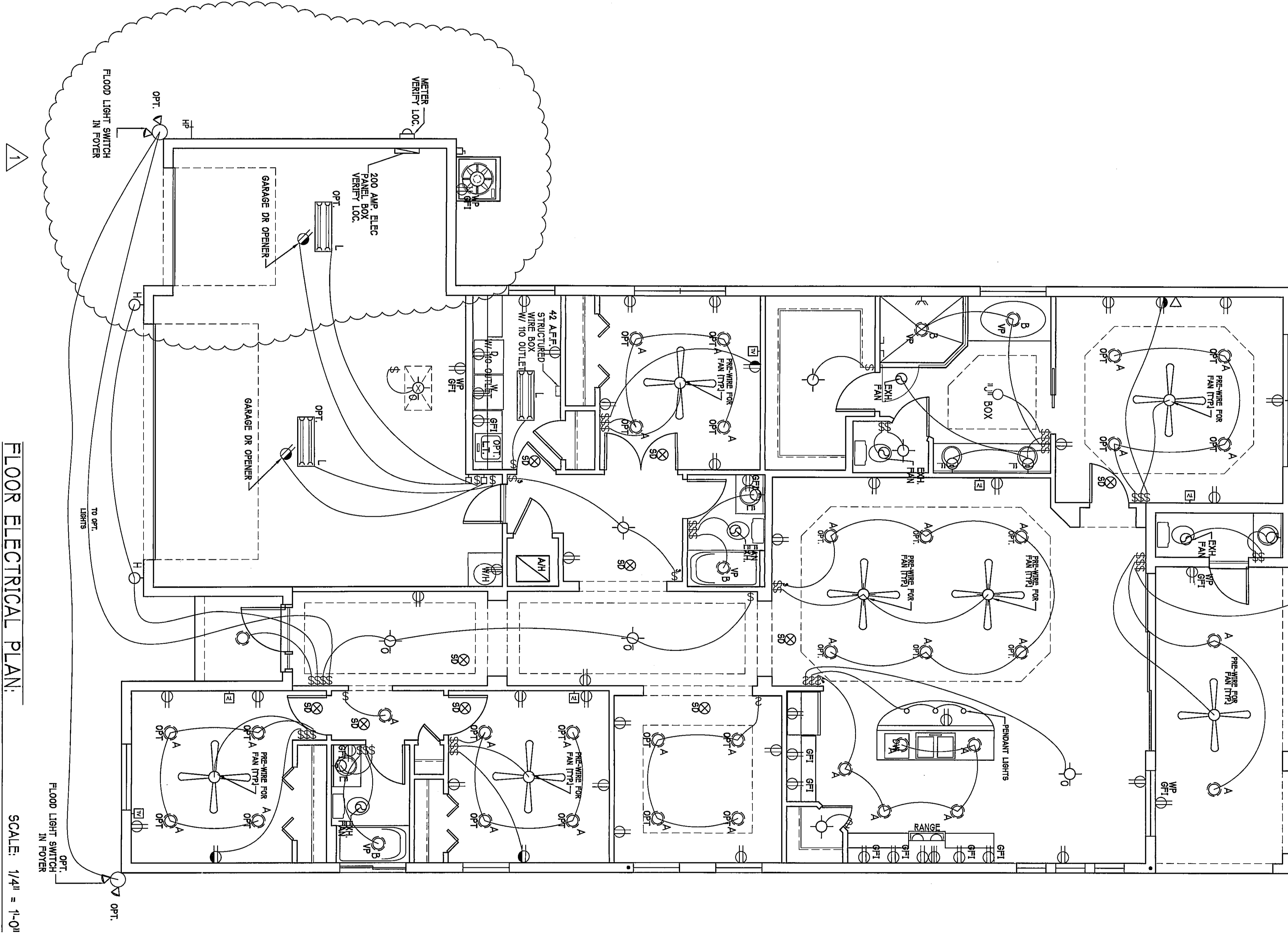
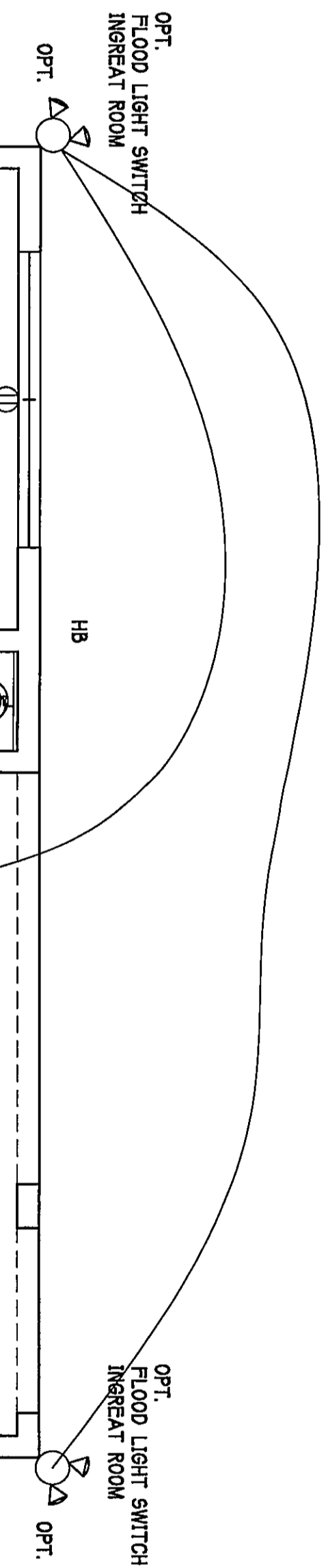
TRUSS STRAPPING TO MASONRY			
INSTALL	MAX TRUSS UPLIFT @ 24" O.C. (LBS)	CONNECTOR	FASTENER
ALL METAL AT TRUSSES TO 1450 lb	1800	(1) METAL TO 40	8-10dX1 1/2" EMBED 4"
ALL METAL AT TRUSSES TO 1450 lb	2235	(1) METAL TO 40	12-10dX1 1/2" EMBED 4"
ALL METAL AT TRUSSES TO 1450 lb	1985 (1 PLY)	(2) METAL TO 40	12-10dX1 1/2" EMBED 4"
ALL METAL AT TRUSSES TO 1450 lb	1900 (2 PLY)	(2) METAL TO 40	14-16d EMBED 4"
ALL METAL AT TRUSSES TO 1450 lb	2500 (2 PLY)	(2) METAL TO 40	14-16d EMBED 4"
ALL METAL AT TRUSSES TO 1450 lb	2500 (2 PLY)	(2) METAL TO 22	14-16d EMBED 4"

NOTES:

- 1) PROVIDE A STRAP FROM THE ABOVE LIST AT EACH ROOF TRUSS BEARING POINT, BASED ON THE TRUSS UPLIFT VALUES. THE STRAP SHALL BE 6" WIDE, 1/2" THICK, AND SHALL BE SIZED FOR THE GEOMETRY. EMBED STRAP ON 6" OF WALL.
- 2) CONNECTORS ARE SIMPSON STRONG TIE. ALL CONNECTORS SHALL BE INSTALLED IN STRICT ACCORDANCE WITH SIMPSON PRINTED INSTRUCTIONS. SUBSTITUTIONS MUST BE APPROVED IN WRITING BY THE ENGINEER OF RECORD.
- 3) WHERE EMBEDDED STRAPS ARE MISSING, OR MIS-LOCATED, INSTALL RETROFIT STRAP PER 10/S-1.

DESIGN IN ACCORDANCE WITH THE FLORIDA BUILDING CODE 2001

DATE: 8-19-13	MODEL: UNIT 2431	LOT: 33 BLOCK: SUBDIV: CELEBRATION CAPE	Gulf Coast Drafting & Design Phone (239) 540-1822 Fax (239) 540-7759	D.R. HORTON America's Builder
DRAWN BY: GCH	RESIDENCE FOR: SPEC	ADDRESS: 283 DESTINY CIRCLE		
CHECKED BY: JWC		G.C.D. JOB #: 5061		
REVISED: 10-8-2013			DEREK BEYERHOFER P.E. OCT 10 2013 FL # 050582	STRUCTURAL SYSTEMS OF NORTH FLORIDA 1634 S.E. 47th ST SUITE #3 CAPE CORAL, FL 33904 (239) 549-4554 CA# 8829



ELECTRICAL LEGEND	
	ELECTRICAL METER
	ELECTRICAL PANEL
	100 V JUNCTION BOX
	SINGLE RECEPTACLE OUTLET
	200 V RECEPTACLE OUTLET
	4-PLEX RECEPTACLE OUTLET
	DUPLEX RECEPTACLE OUTLET
	1/2 SWITCHED DUPLEX OUTLET
	DUPLEX RECEPTACLE & ELEC. A.P.F.
	TIMER SWITCH
	3-WAY SWITCH
	SINGLE POLE SWITCH
	SMOKE DETECTOR
	FLOOD LIGHT
	RECESSED LIGHT
	WALL MT'D BRACKET LIGHT
	DUPLEX FLOOD LIGHT
	EXHAUST FAN
	TRACK MT'D LIGHTS
	A/C DISCONNECT
	PUSH BUTTON
	DOOR BELL
	KEYPAD
	FLUORESCENT LIGHT
	UNDER COUNTER LIGHT

Electrical Notes:
Install Arc-Fault Circuit-Interrupters & Tamper-Resistant Receptacles
shall be installed in dwelling units per NEC 2012 & 405.11
All electrical equipment to be set at or above base flood elevation.
All outlets in wet areas and all exterior outlets to be GFI's
Install Phone & TV per contract.
INSTALL ALL ELECTRICAL PER NEC 2008

OPTIONAL ELECTRICAL PLAN 2583

200 Amp Service		
TAG	QUANTITY	PRODUCT #
A	(38)	Recessed Cans
B	(4)	Vapors
C	(1)	Pendant/Nook
D	(X)	10" Mushroom
E	(3)	24" Avilion 3 LT
F	(2)	36" Avilion 4 LT
G	(X)	NOT USED
H	(3)	Coach Lights
J	(X)	Coach Lights
K	(X)	J BOX
L	(4)	4" Fluorescent
M	(3)	2" Fluorescent
N	(X)	5lt Chandelier
O	(1)	3 LT Avilion
P	(3)	Pendant Light

DESIGN IN ACCORDANCE WITH THE FLORIDA BUILDING CODE 2010

DATE: 8-19-13

DRAWN BY: GCH

CHECKED BY: JWC

REVISED: 10-8-2013

PLAN: ELECTRICAL

SCALE: 1/4" = 1'-0"

SHEET# A-5AB

MODEL: UNIT 2431

RESIDENCE FOR: SPEC

LOT: 33 BLOCK :

SUBDIV: CELEBRATION CAPE

ADDRESS: 283 DESTINY CIRCLE

G.C.D. JOB #: 5061

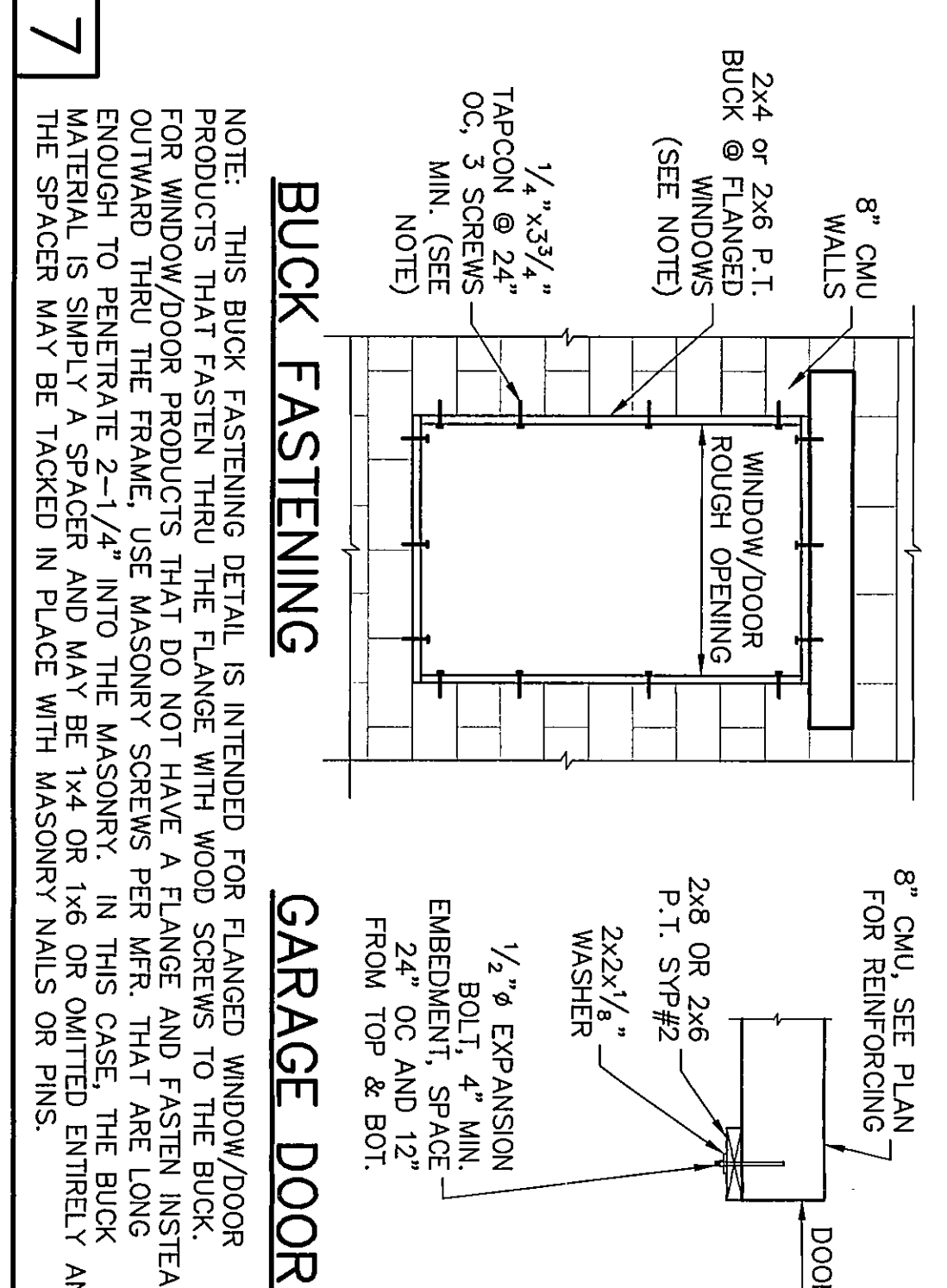
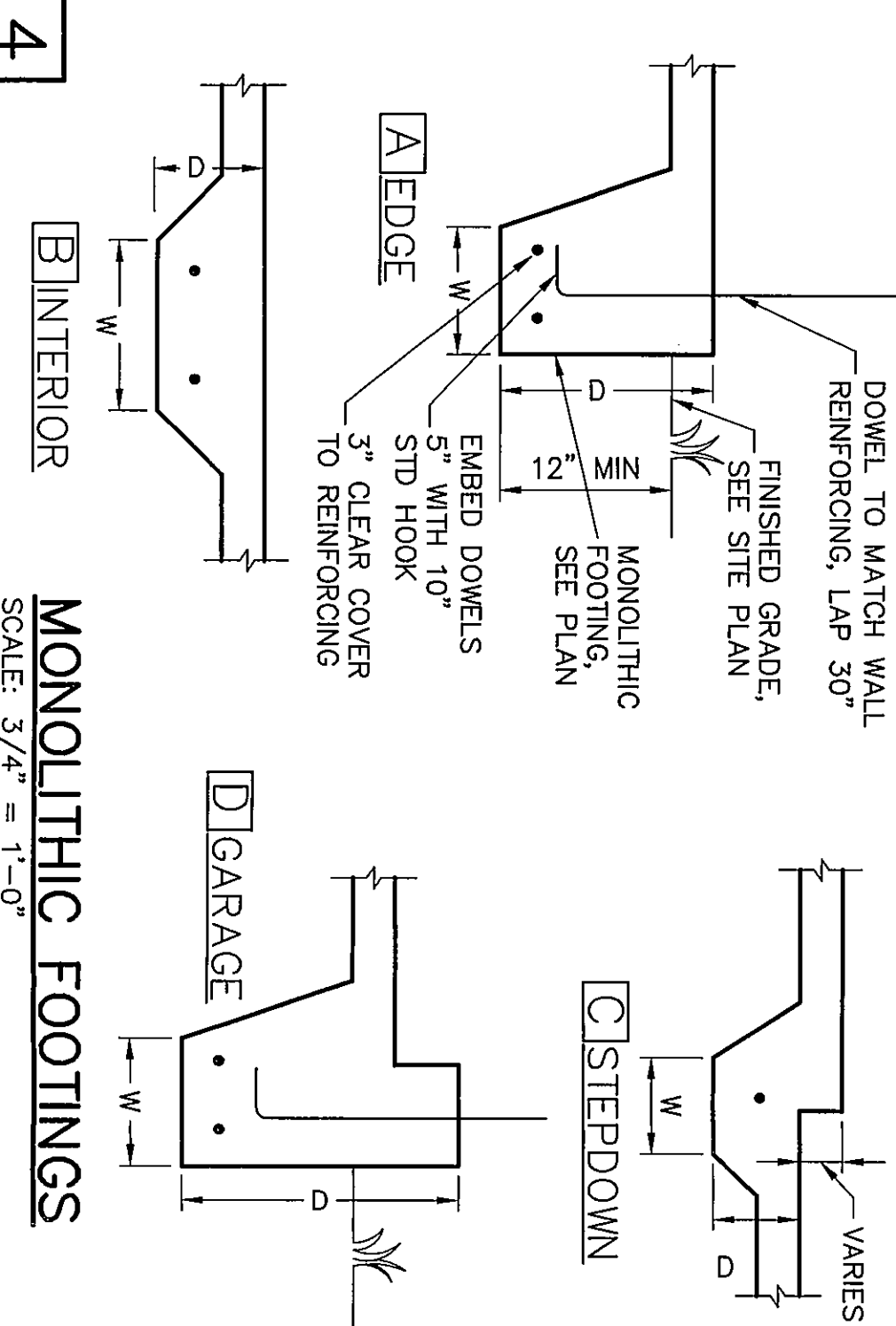
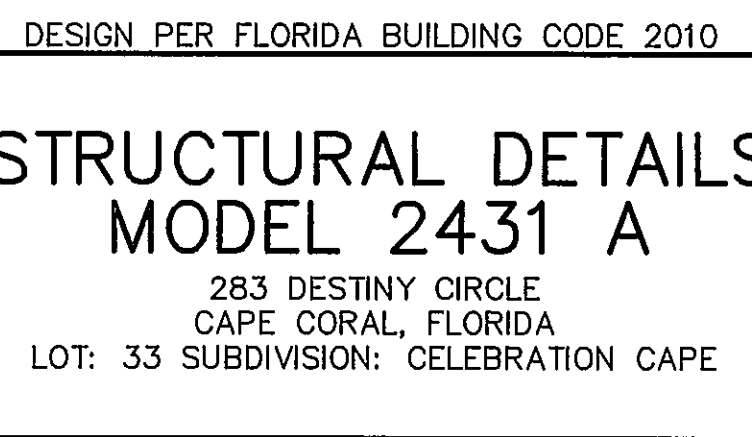
Gulf Coast Drafting & Design

Phone (239) 540-1822

Fax (239) 540-7759

D.R. HORTON

America's Builder



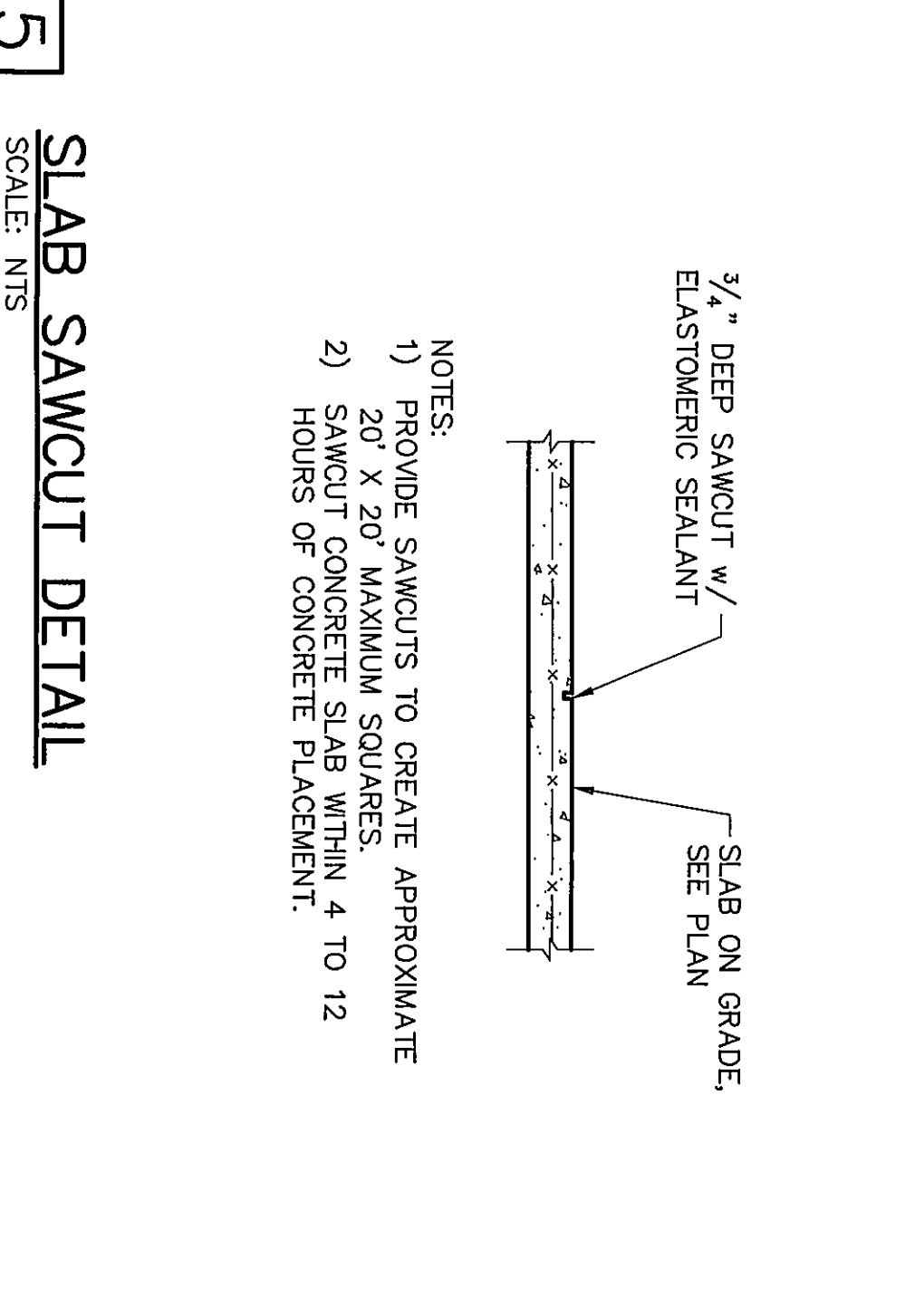
RETROFIT STRAPS TO CONCRETE/MASONRY		
THUS UP/LIFT (LBS) @ 24" OC	CONNECTOR	
TO 840	1-H15M16 or 20	7-10d41 1/2" x 4" x 2 1/2" TITEN
TO 1045	1-H15M16 or 20	8-10d41 1/2" x 4" x 2 1/2" TITEN
TO 2090	2-H15M16 or 20	8-10d41 1/2" x 4" x 2 1/2" TITEN
TO 3480	4-H1616Z	16-16d 1/2" x 4" x 2 1/2" TITEN
TO 10630	H61-2/J3	16-16d 1/2" x 4" x 2 1/2" ALLTHREAD DRILL & EPOXY TO "C" EMBED w/ SIMPSON SET TWO 3/8" ALLTHREAD DRILL & EPOXY TO "C" EMBED w/ SIMPSON SET. EPOXY 12" EMBED WITH SIMPSON SET.

NOTES:

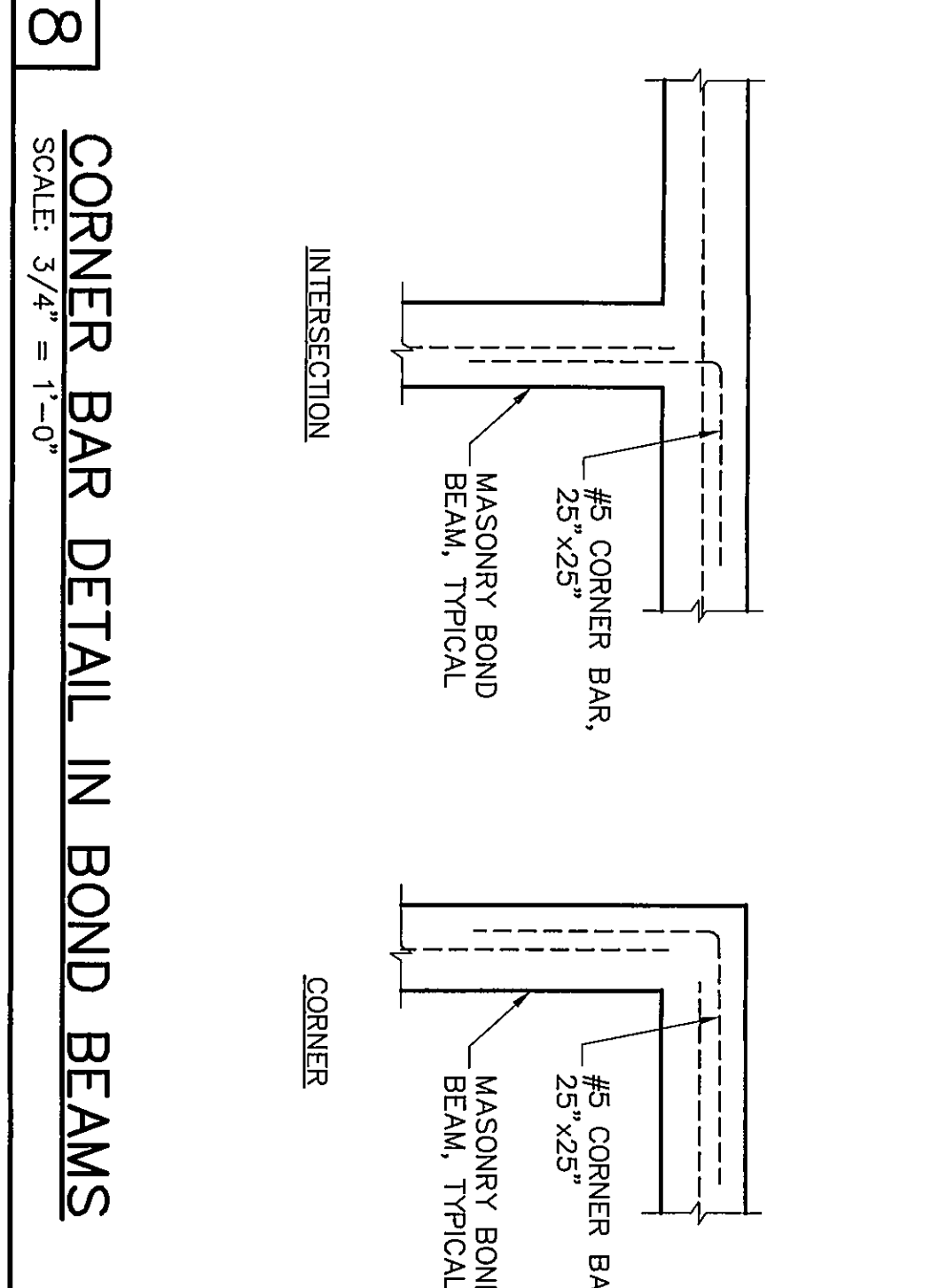
- 1) WHERE EMBEDDED STRAP IS MISSING OR MIS-LOCATED, PROVIDE A STRAP FROM THE ABOVE LIST AT EACH ROOF RUSS BEARING POINT, BASED ON THE RUSS UPLIFT VALUES IN THE SIGNED AND SEALED RUSS DESIGN PACKAGE.
- 2) CONNECTORS ARE SIMPSON STRONG-TIE. ALL CONNECTORS SHALL BE INSTALLED IN STRICT ACCORDANCE WITH SIMPSON PRINTED INSTRUCTIONS.

RETROFIT UPLIFT CONNECTOR SCHEDULE

2. NOTE: EXTERIOR CEILINGS AND SUFFITS SPECIFIED HERE MEET THE DESIGN WIND PRESSURES PER R703.1.3.



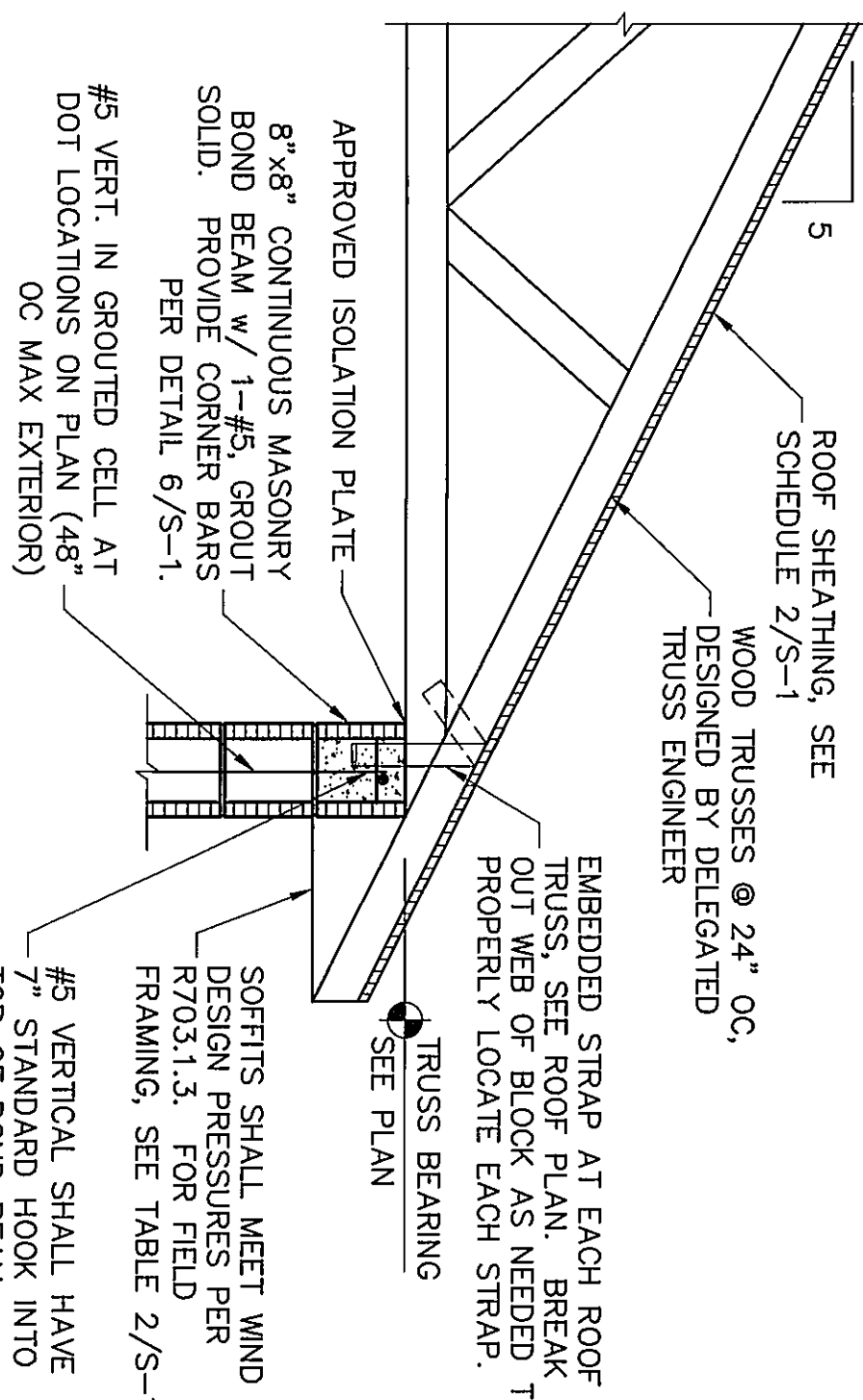
SLAB SAWCUT DETAIL



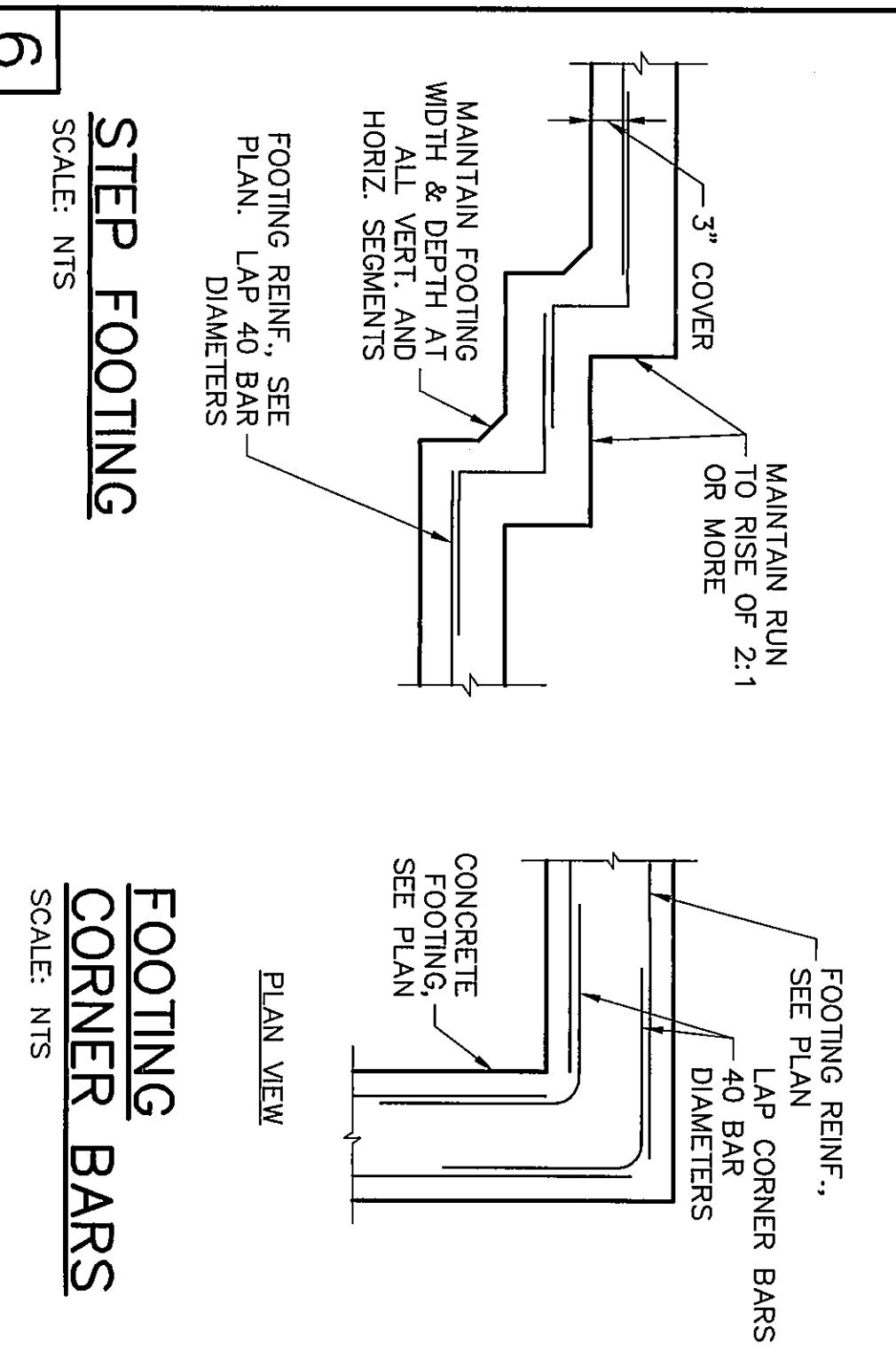
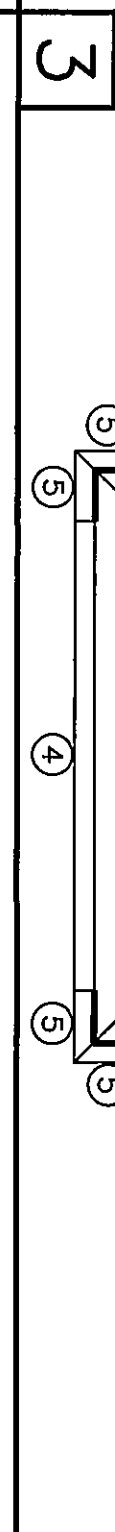
8

CORNER BAR DETAIL IN BOND BEAMS

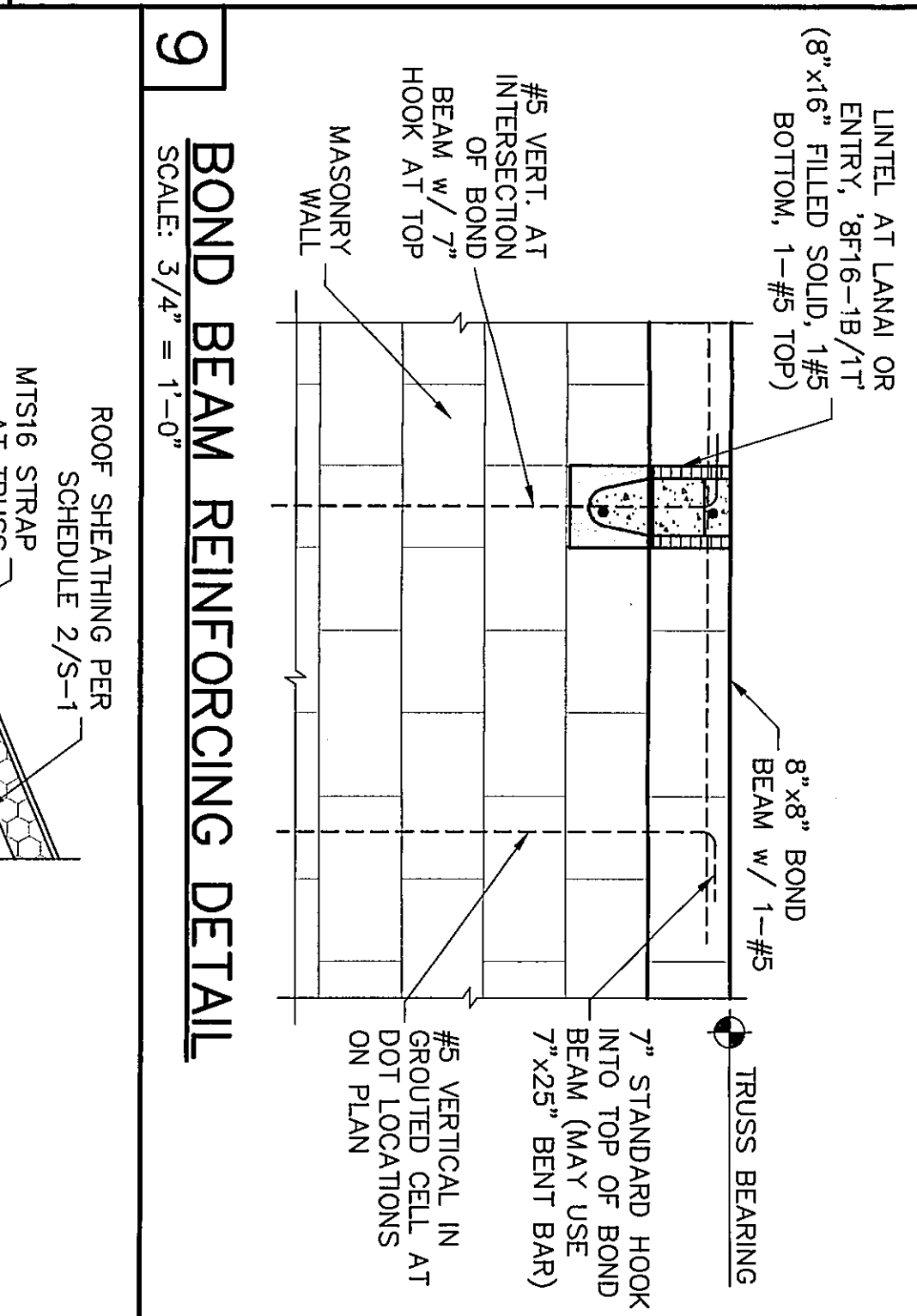
SCALE: 3/4" = 1'-0"



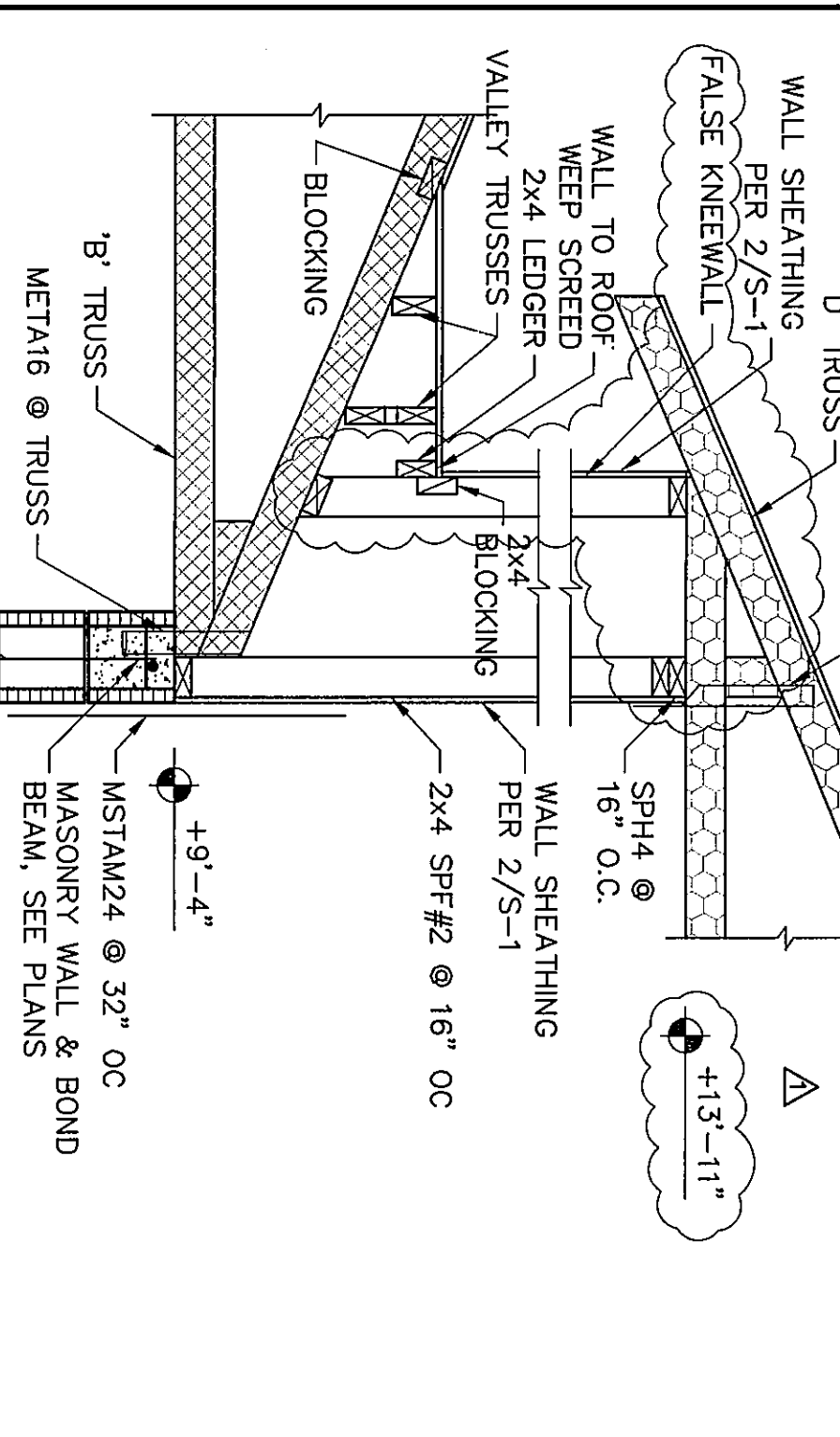
TRUSS STRAP TO BOND BEAM
SCALE: $3/4" = 1'-0"$



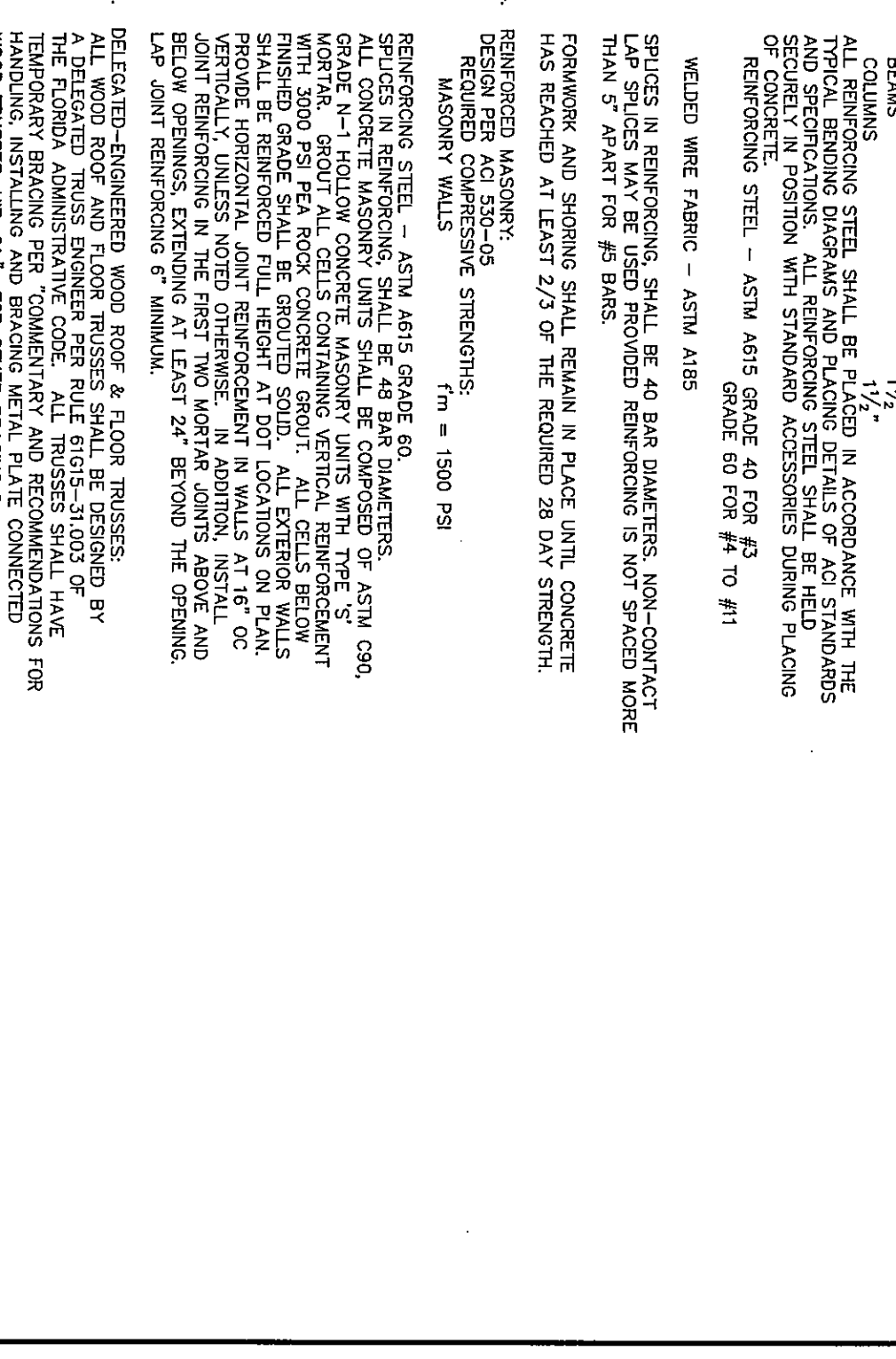
SCALE: NTS	SCALE: NTS
6	



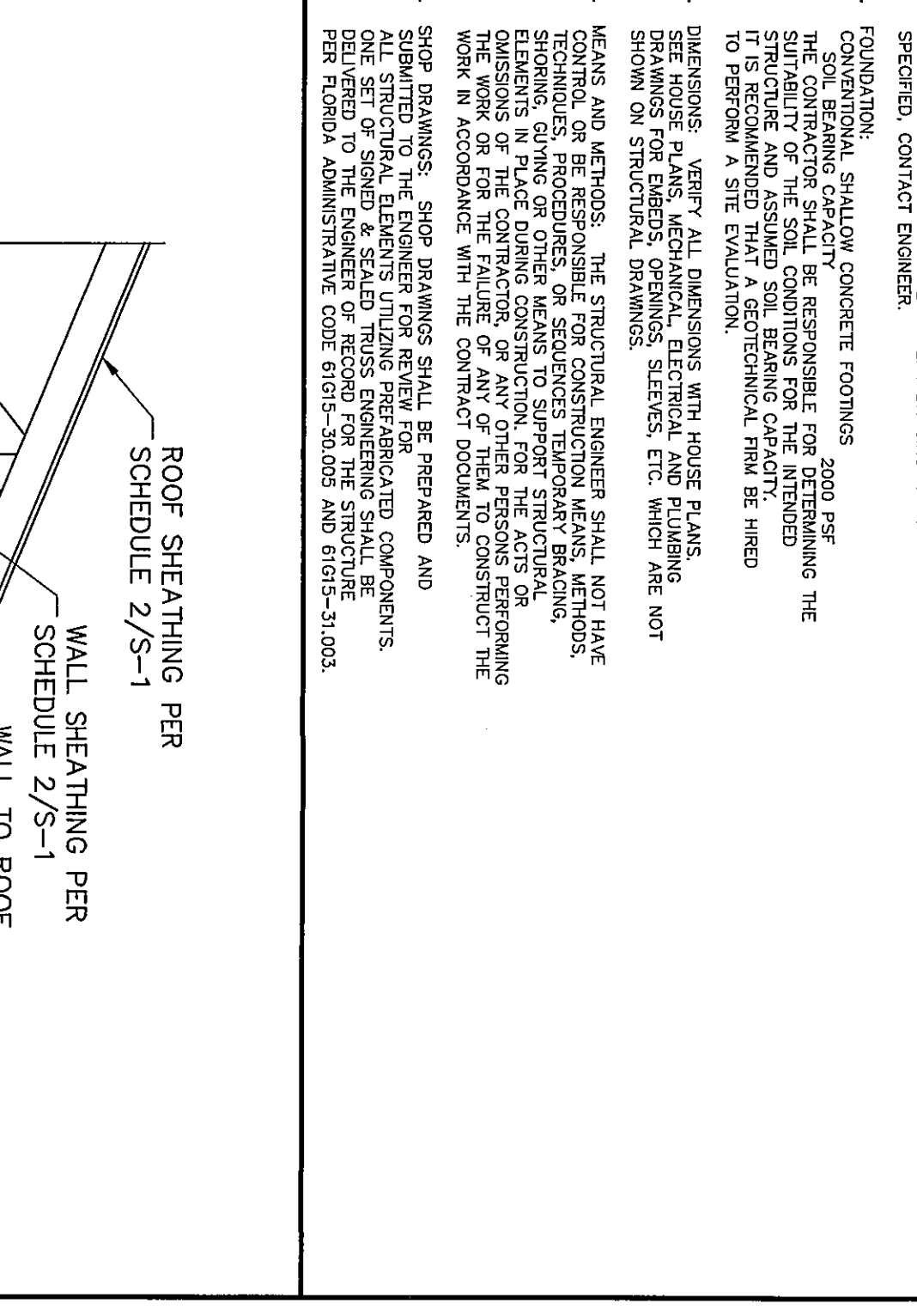
ROOF SCHEDULING 1 EN
SCHEDULE 2/S-1
MTS16 STRAP
AT JOINTS



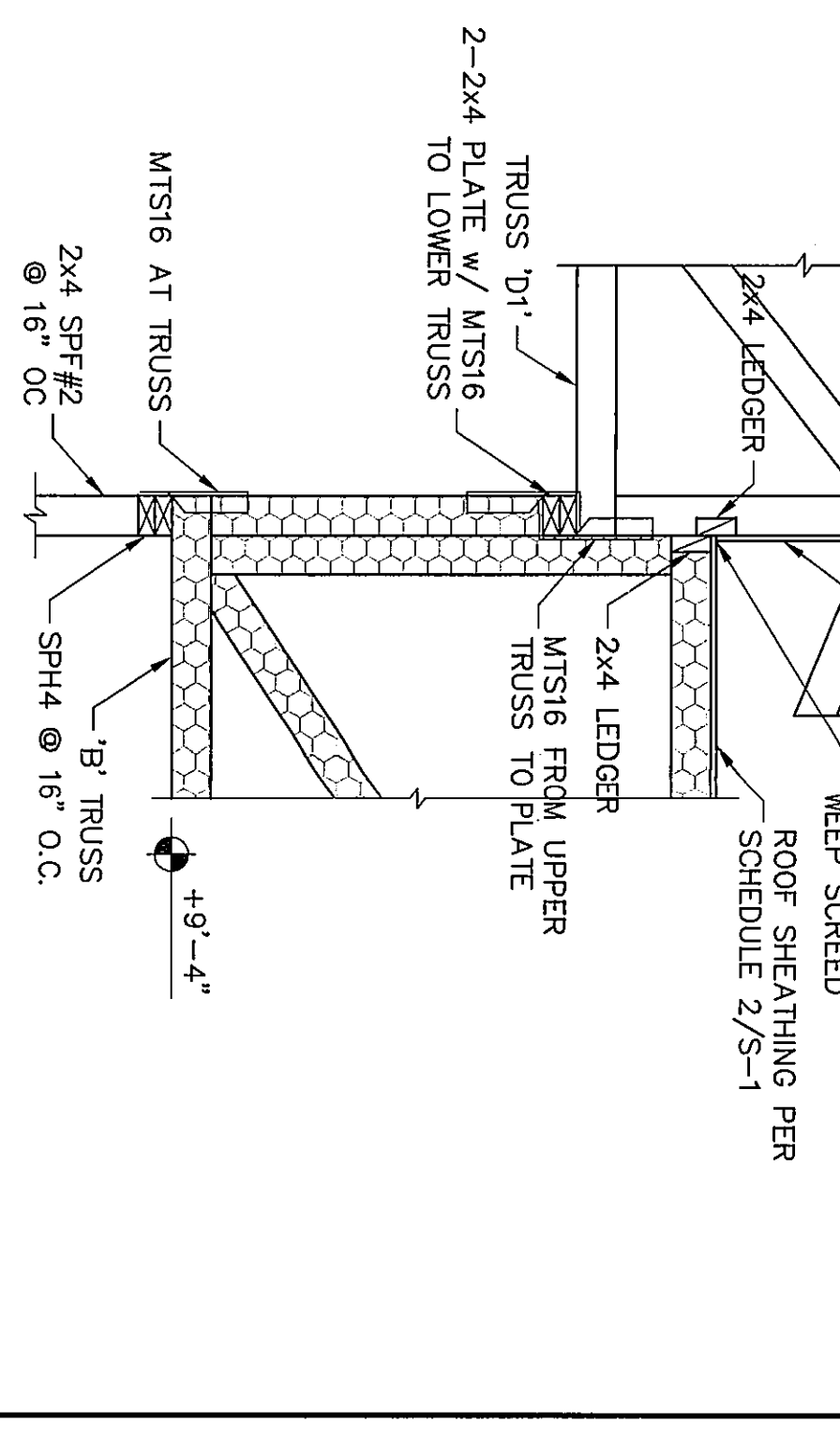
12 KNEEWALL AT ENTRY
SCALE: 3/4" = 1'-0"



THE FLORIDA ADMINISTRATIVE CODE. ALL TROSSES SHALL HAVE TEMPORARY BRACING PER COMMENTARY AND RECOMMENDATIONS FOR HANDLING, INSTALLING AND BRACING METAL PLATE CONNECTED WOOD TROSSES, HB-91,* FOR OTHER BRACING REQUIREMENTS, MODELS DEVELOPED BY PROVIDING EQUIVALENT BRACING PER TROSSES



WALL SHEATHING PER
SCHEDULE 2/S-1
WALL TO POOL



STRAPPING AT FOYER TRUSSES

DESIGN/DRAWN	
DWG/DWB	
CHECKED	
DWB	
DATE	
08/19/13	
SCALE	
VARIES	
JOB NO.	
DR5061	
SHEET	
S-1	