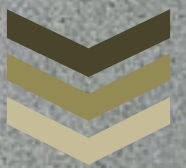


GORMLEY GROUP



T: 0044 (0) 208 9615651
E: info@gormleystone.co.uk
www.gormleystone.co.uk

STONE MARBLE GRANITE &
SLATE SPECIALISTS

No 1 Poultry
Client: Polombo
Architects: James Sterling



Expertise	02
Core markets	03
Competitive advantage	04
Design	05
Manufacture	07
Procurement	08
Estimating	09
Exteriors	11
Interiors	15
Hardscape	12
Restoration	15

Gormley Group is a private company formed by the current managing director Mr James A. Gormley.

Gormley Stone Marble & Granite Ltd was established in 2013 and since then has secured projects valued in excess of £7million from some of the UK's most respected contractors.

The group of companies having in excess of 45 years working experience in natural stone throughout the UK and Ireland.

Gormley is a name associated with quality – quality built in stone.....

01

Expertise

Consultancy

- Sample sourcing
- Material testing
- Slip testing – in house service
- Pre-tender value engineering
- Cost analysis and feasibility studies
- Pre-install site visits

New build stonework

- Exterior cladding
- High end residential
- Hotels
- Shopping centres
- High end Commercial lobbies and fit-outs
- Infrastructure and hard-scape

Areas of operation

All aspects of natural stone and ceramics, including but not limited to:-

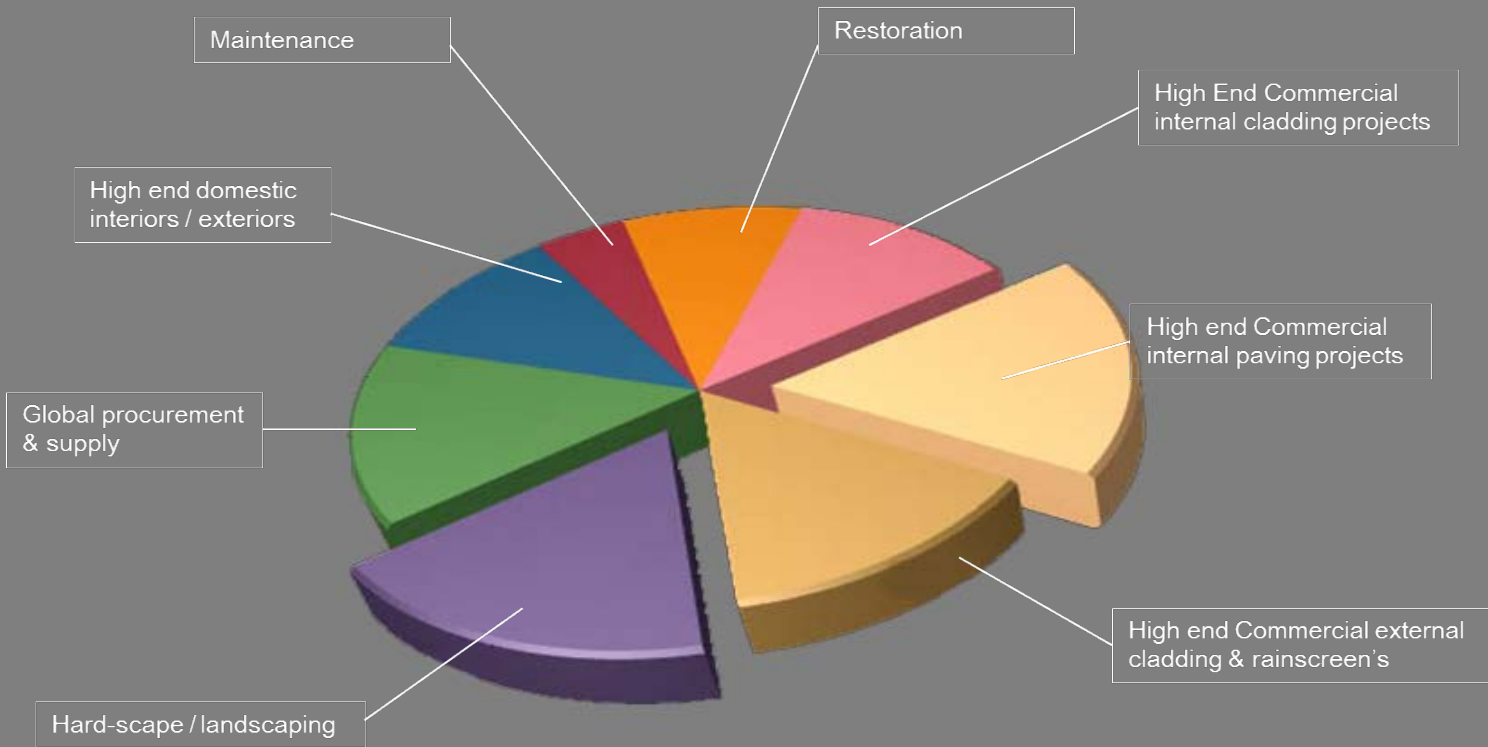
- Internal/external marble, granite and limestone cladding
- Internal/external marble, granite and limestone paving.
- External rain screen cladding
- Residential – Bathrooms, kitchens, reception rooms and hallways, fireplaces.
- WC fit-out – limestone, marble, granite, quartzite and ceramic packages
- Infrastructure
- Steps and staircases

After care

- Large & small scale restoration projects
- Large & small scale cleaning
- Maintenance & service contracts
- Specialist cleansing / Graffiti removal and sealant application
- Replacement of damaged material



Core markets



Competitive advantage

Team

Gormley are proud to employ a conscientious, loyal and dedicated team of personnel. The average staff member having worked for the company for over 15 years.

Each department is overseen by a director, co-ordinating with line management to ensure each operation meets the set targets in terms of quality, programme and budget

Full design and build

The Gormley Group have a specialised team of in house stone masonry & design draughtspersons. Gormley offer a comprehensive design and build service which includes provision of material samples and advice of suitability and compatibility of materials to ensure all products are fit for purpose.

Knowledge.....

With our in-depth knowledge of materials and global procurement we have built a valued working partnership with companies across the Americas, Asia and Europe that allows us to offer value engineered material options for all projects involving granite, marble, quartz, limestone, sandstone, slate and ceramics - packages can be tailored to meet specific needs.



Design

The Gormley Group have a fully equipped design office – operated by a directly employed design team based at our North London Offices.

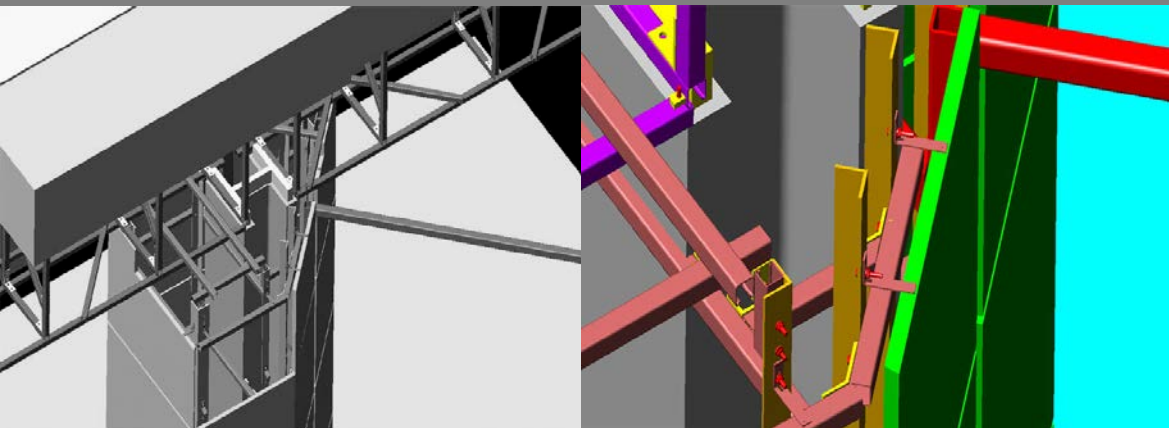
The design team currently run Autodesk **AutoCad V2015** on all machines – All of our dedicated Stone Designers are experienced in **AutoCad 2D** and **3D** modelling.

All are **Revit** trained and have also worked on **BIM** implemented projects.

All fixings/framework are fully calculated by qualified structural engineers to ensure each component meets the requirement in terms of load and material suitability.

Design risk, hazard identification and mitigation are assessed by the Technical/Design team prior to the generation of any design information/drawings.

Prior to initial issue, drawings are reviewed by the Design Team Manager and Technology and Procurement Manager to ensure compliance with the architects general layout drawings, specification and all relevant British Standards.



No 1 Poultry

Client: Polumbo

Architects: James Stirling



3D

Complex detailing

In-house design work

Manufacture

The Gormley Group have the largest manufacturing facility in the London area with a factory floor area in excess of 22,000 sq ft.

The factory includes:

- 2no large format saws
- 1no new CAD/CAM manufacture 3 axis cutting machine.
- 2no “Jenny Lind” slab polishing machines.
- 1no Automatic edge polisher.
- 2no “Fischer” under anchor drilling machines (For “rainscreen” type cladding systems)
- A fully equipped masonry workshop with highly skilled stone mason’s.
- Space for ‘offsite’ mock-ups and dry lays.
- Storage areas for procured project material.

The Gormley Group have fleet of delivery vehicles –including lorries equipped with HI-AB offloading capabilities, trucks and vans.

All conveniently located under 6 miles from central London.

Quality Control



Masonry workshop

CAD/CAM Manufacture



Potentially over 20,000m² finished dimensional stone output per annum from our UK production facility alone.

07

Procurement



Gormley will guide you through the entire stone selection process. We can arrange quarry visits and assessments. Full sampling at all project stages from pre-tender to contract stage range samples. Factory dry lays, mock-ups & detailing samples can be arranged from 'source' or within our facility in North London. We source materials only from the very best supply chain - all fully assessed for our clients prior to project engagement.

Estimating

The facts, the figures

Architects dreams / Contractor reality. Balancing the books from inception.

Gormley aim to provide clients with cost certainty prior to construction activities commencing.

*The estimating team use the latest BIM integrated take off software including **On Screen / Evaluate 2 & Dimtronix 3D**. Coincided with the more traditional Excel spreadsheets.*

Gormley are able to quickly prepare fully analytical cost plans, bills of quantity and take off data.

Our estimating team has over 70 years combined stone industry experience between them and are able to rationalise designs and undertake value engineering exercises at every step of the tendering process, thus allowing clients and contractors the very best quality materials and design for their project at the most competitive rates.





EBURY SQUARE

Client: Berkeley Homes

Architects: Squires & Partners

External cladding in 'Jordans basebed'

Project value £2.5million

Internal apartment fitout 29 apartments

Project value £2.1million

10

Exteriors

Gormley recommend that the stone and the cladding contractor are selected as early as possible in the project programme to ensure timely procurement of material and design value engineering.

Gormley offer responsibility for the entire stone package including stone detailing, stone procurement, site installation (including all associated works i.e. RIW, insulation, cavity trays, fire barriers, mastic etc.)

The Gormley Group directly employs operatives that provide the necessary experience and expertise to carry out all aspects of the stone cladding industry.



Load bearing masonry

Rainscreen cladding

Metal frame support systems

Traditional handset cladding



Triton Square

Client: British Land

Architects: Sheppard Robson

**Award winning
cladding
installations**



TRADITIONAL

M

O



E

R

N

14

Interiors

Gormley have time and time again proven themselves to be a high quality fit out company - working side by side with world prominent Architectural practices. Gormley are able to showcase our quality of manufacture and installation across a multitude of interior projects from luxury high volume high-rise apartment complexes to HQ buildings for the world's most renowned companies.



Luxury



Our abilities bridge a multitude of sectors

Hotels

Museums

Shopping centers

Airports

HQ buildings

Train Stations

Luxury residence





The highest quality material, sourced worldwide to allow us to deliver to the very best of our ability, every time.

- Marble
- Granite
- Limestone
- Gneiss
- Onyx
- Slate
- Basalt
- Mosaics
- Ceramics
- Porcelain
- Terrazzo
- Composites and veneers

Kings Cross Station

Client: Networkrail

Architects: John McAslan + Partners

10,000m² Paving

Install
timetable



Hardscape



Detail



Canary Wharf

Client: CWCL

Infrastructure

20,000m² + Paving

Volume

Restoration & Cleaning



Cathedrals & Abbey's
Churches
Portland Stone repairs
Anti Graffiti treatments
Public buildings & spaces
Museums
Galleries
Commercial office exteriors
Commercial office interiors

The last word

*For over 45 years
Gormley Group has been
carving a reputation in
stone.*

*A reputation
painstakingly shaped by
the efforts of the people
you will find managing
the company today.....*

Gormley Group - London

info@gormleystone.co.uk
Tel: 0044 (0) 20 89615651