

# Regional Emergency Transportation Coordination Workshop

Regional Alliance for Resilient and Equitable  
Transportation (RARET) Workgroup

# Welcome!

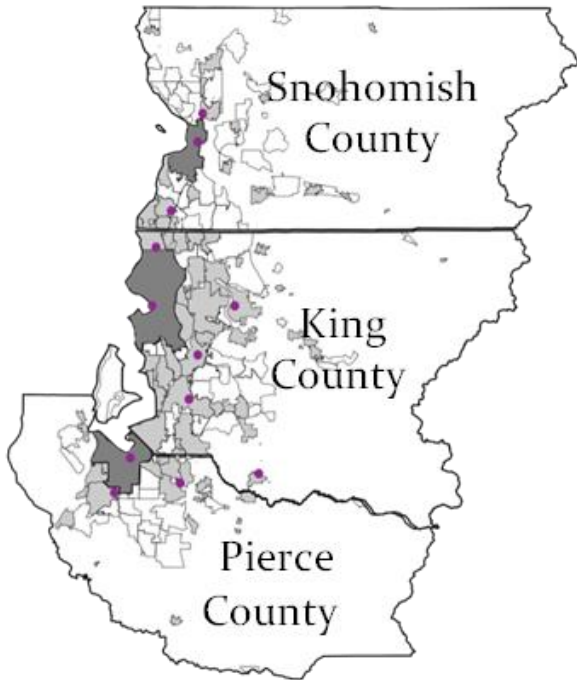
- Facility Safety Instructions
- Introductions
  1. Name
  2. Title
  3. Agency
  4. Role in past snow response

# Regional Alliance for Resilient and Equitable Transportation (RARET) Workgroup

**Vision:** A coordinated network supporting the Puget Sound Region with equitable and resilient transportation services in an emergency.

## Strategies

1. Gap Analysis
2. Coalition Building
3. Preparedness
4. Resource Identification
5. Coordination
6. Communication



# Transportation Provider Emergency Operations Survey

- On average, the reported availability of drivers dropped by 51% during the snow event.
- 33% of survey respondents reported some damage to vehicles during the snow event.
- Agencies cited unsafe road conditions and unsafe conditions for clients (i.e. icy sidewalks) as the top reasons for limiting or cancelling trips.

# Objectives

1. Provide a setting where attendees can determine how to solve transportation problems across jurisdictional boundaries
2. Enhance regional coordination during an emergency by exploring how regions can support each other
3. Identify strategies to maximize resources
4. Define how requests for resources can be made

# Workshop Purpose

1. Is there a need for coordinating transportation across jurisdictions in an emergency?
2. What would that coordination look like?

# February 2019 Snow Event Impacts

Snohomish, King, and Pierce Counties

# Snohomish County Impacts

Cities generally experienced 6-10 inches of snow

## Response

- Coordinated with King County for snow vehicles and 4x4s, which were on standby in Snohomish County.
- Snohomish County Office of Emergency Management Partial (Level 2) Activation of Emergency Command Center (ECC)
- Contacted Snohomish County hospital dispatch centers to arrange transportation for critical staff



# King County Impacts

North, East King County most impacted (8-12 inches), compared to 2-5 inches in rest of region

## Response

- King County Metro mobilized Emergency Snow Network (ESN)
- Seattle-King County Public Health implemented Winter Weather Medical Transportation procedures
- North Bend declared state of emergency, mobilized National Guard
- King County Emergency Management activated hotline for unincorporated King County residents needing assistance

# Pierce County Impacts

West Pierce County most impacted

## **Response**

- Activated Snowplow hotline for community members
- Leveraged public works and community groups to transport staff to medical facilities
- Supported King County with snowmobiles

# Discussion 1

What were the transportation-related needs in your jurisdiction that you were challenged to fill?

**BREAK – 10 Minutes**

# RARET Coordination Stories

- 1. February 2019: Hopelink Mobility Medical Transportation Triage Team**
- 2. February 2019: After Action Stories**
- 3. June 2019: Northwest Healthcare Response Network (NWHRN) Surge Test**

# Discussion 2

What would coordination look like  
and how do we get there?

# Hotwash!

How does this discussion impact efforts in your jurisdiction?

# RARET: Next Steps

- Workshop Evaluation Survey
- Needs Assessment
- Strategic Planning Meeting
- Workgroup Membership



# Thank You!

## Workshop Facilitators

**Deborah Witmer**, City of Seattle, Human Services Emergency Management Team

**Mike Ryan**, City of Bellevue, SHS Zone 1

## RARET Workshop Taskforce Members:

**Neil Crosier**, King County Metro

**Randy Fay**, Snohomish County OEM

**Robin Pfohman**, Seattle-King County Public Health

**Serina McWha**, Pierce County OEM

**Staci Haber**, Hopelink/KCMC

# RARET Staff Support

**David Lynch**

Program Manager

[Dlynch@Hopelink.org](mailto:Dlynch@Hopelink.org)

**Melissa Brown Rotholtz**

Mobility Coordinator

[Mbrown@Hopelink.org](mailto:Mbrown@Hopelink.org)