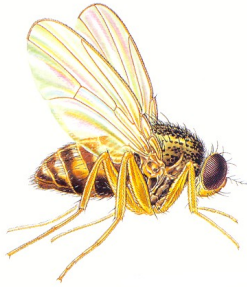




## **COMMAND PEST CONTROL**

### **Information sheet number 36 - The Fruit Fly**



#### **Appearance:**

2mm long, 3 to 4mm wingspan, fat bulbous body greyish yellow, some have large often red or orange eyes, feathery antennae, cross-striped body.

#### **Breeding:**

700 to 800 eggs laid at 20 to 25 per day in the foodstuff for the hatching larvae, larvae have 3 moults and they migrate to pupate. The egg to adult stage can be as short as 8 days at 30°C.

#### **Food:**

Varies but it is usually sour milk, rotting and fermenting fruit e.g. grapes and bananas, vinegar, wines, beers, fruit juices, tomatoes and dried fruits.

#### **Where do Fruit flies live?**

Bars, breweries, wine producers, dried fruit plants, tomato processors, fruit drink producers. They are often found in bars around optics and where beer or soft drinks have been spilt or empty bottles stored in bins etc. They alight in clouds and take to the wing if disturbed.

#### **Diseases and damage:**

No disease as transmitted by these flies but they will encourage fermentation of products.

#### **Control:**

This is achieved by the removal of their breeding medium and food attraction source, leakage should be kept to a minimum and spillages cleaned away. Control depends on improved hygiene - drains and gullies need to be kept clean.

In bars and kitchen areas, remove or cap all fruit juice bottles and similar attractive

receptacles. Ensure improved hygiene around beer, fruit juice and other drinks dispensers. Screening windows and doors is the preferred option. This fly is often wrongly confused with the filter or drain fly.

**For more advice and control recommendations contact us on 01787 248049**