



Perfect Fit[®] Blind Fitting Instructions

(Pleated, Cellular & Venetian)

|||| LOUVOLITE

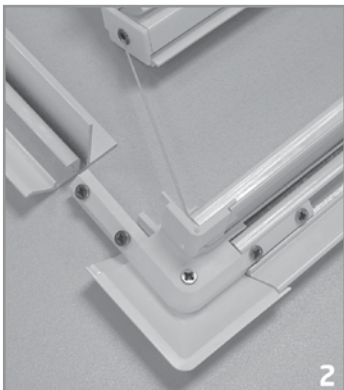
How to assemble your Perfect Fit® blind

To assemble your Perfect Fit® blind, there is a simple assembly procedure to follow before fitting may commence. Carefully unwrap the blind components. Unravel all guides and control cords. The blind will have the top and bottom parts of the frame attached together with cord.

- 1 Lay out the blind face down on a clean, even surface.



- 2 Select the left hand frame component and guide onto the exposed arm of the bottom left corner joint.

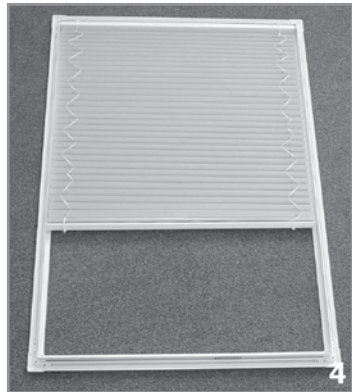


How to assemble your Perfect Fit® blind (continued)

- ③ Slide the frame along the arm until secure. Repeat the process on the top left hand corner joint. Now follow the same procedure for the right hand side of the frame. Once the frame is complete tighten the securing screws attached to each corner joint.



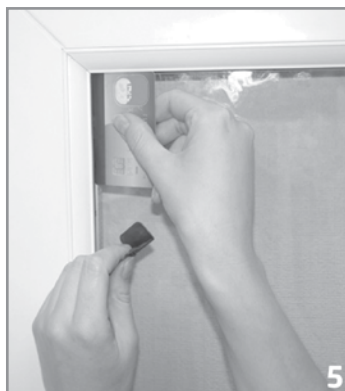
- ④ Your Perfect Fit® blind is now ready to be fitted.



How to fit your Perfect Fit® blind using the window fixing brackets

Apply lubricant in the form of washing up liquid to the flat base of the window fixing bracket prior to insertion of the bracket between window and rubber seal.

- 5 For the correct spacing distance of the brackets (85mm), place the credit card into a corner of the window.



- 6 Line up the window fixing bracket at the base of the card (or top of the card depending upon which corner of the window you are working) and fit the bracket by pushing it between the glass and the rubber seal on the window.



How to fit your Perfect Fit® blind using the window fixing brackets (continued)

- 7 Using the credit card guarantees a perfect line up for each of the holes in your frame with each of the brackets



- 8 Fit any intermediate brackets accordingly. Clean excess lubricant from window surface prior to fixing frame to brackets.



How to fit your Perfect Fit® blind using the window fixing brackets (continued)

- 9 Take the Perfect Fit® frame and offer the left hand side to the left hand brackets. Align the frame holes with the bracket lugs. Click into place. Repeat this process for the right hand side. Now the Perfect Fit® frame is locked in position.

To remove the frame use a flat headed screwdriver and depress the bracket lugs while gently easing out the frame.



Notes

S221002



Louvolite Customer Services Tel: 0161 882 5050 Email: sales@louvolite.com
Visit the Louvolite website to view the links to all of our assembly instructional videos
www.louvolite.com

Also find us on:

