



SLIMLINE VOGUE CORD & CHAIN CONTROL
SLIMLINE VOGUE MOTORISED CONTROL

fitting and operating instructions

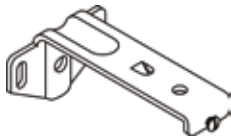
SLIMLINE VOGUE CORD & CHAIN CONTROL

SLIMLINE VOGUE MOTORISED CONTROL

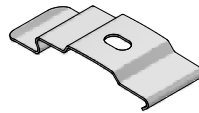
fitting and operating instructions

Carefully unwrap the vertical blind and its associated brackets.

There are a number of bracket options for example face fix, top fix screw fit or top fix spring fit.



Face fix screw fit bracket



Top fix spring fit bracket

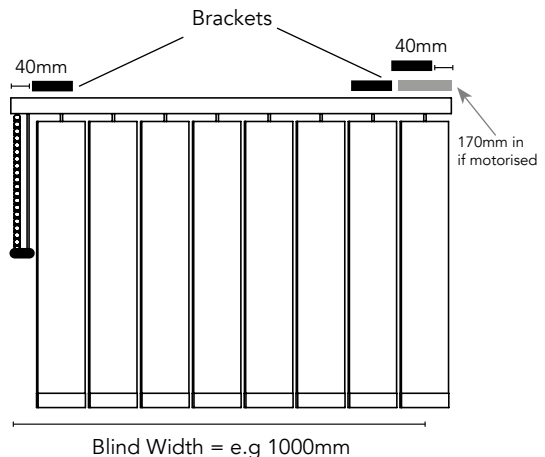
FITTING THE BRACKETS

The brackets should be located to allow for the depth of the louvres on the blind. The brackets should therefore be attached to the ceiling or window frame clear from any obstruction on a line 75mm (3") for 127mm louvres or 55mm (2 1/8") in the case of 89mm louvres.

For a blind up to 1 metre wide attach two brackets fitted approximately 40mm (1 1/2") from each end of the blind (170mm in from the motor end if motorised). Any intermediate brackets should be spaced evenly between these, and as a general rule dependant on how well the brackets are fitted, use the following as a guide:

- Up to 1m = 2 brackets.
- 1m to 2m = 3 brackets.
- 2m to 3m = 4 brackets.
- Over 3m = 5 brackets.

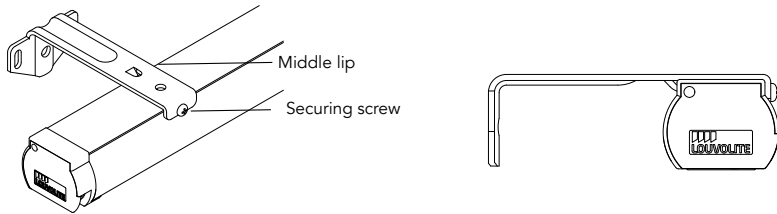
Mark the bracket hole positions before drilling and plugging if necessary. Use two screws for a face fix bracket and one screw in a top fix bracket ensuring that the brackets are level. Remember to allow room for the blind to clear any obstacles when deployed, e.g. door or window handles.



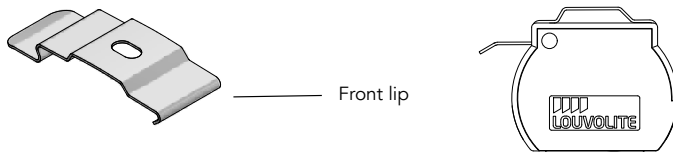
FITTING THE TRACK

The track should be fitted into the brackets keeping the operating cords on the side of the blind as ordered (LH/RH control).

If using a face fix screw bracket, locate the blind with the groove on the back of the headrail and fit it into the middle lip of the bracket. Now push the blind upwards until the headrail is sitting level on the bracket before tightening the securing screw from the front of the blind. Do not over tighten these screws, it is unnecessary and may damage the track.



If using a top fix spring clip bracket you should push the track upwards then tilt away from you to locate the spring bracket front lip into the front groove on the track. Push upwards and the track will click into place.

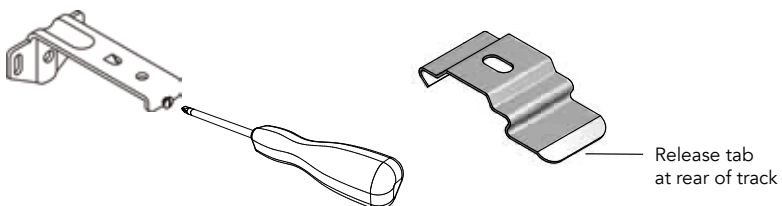


REMOVING THE TRACK

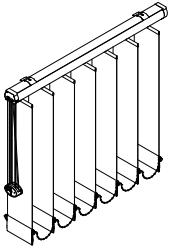
Before removing a track first take down all the louvres from the blind and release the cord and chain from the cord tidy.

With brackets that have retaining screws, unscrew the retaining screw sufficiently to clear the groove on the blind track. Repeat this with each bracket and the track will come away.

For spring clip brackets push upwards against the tab at the back of the bracket to release the blind from the bracket. Do this with each bracket and the track will come away.



FITTING THE LOUVRES



Turn the hooks on the carriers of the track so that the slots are at 90 degrees to the track.

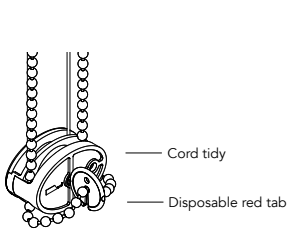
Hang the louvres and ensure the seams are all facing the same direction. The blind is now ready to operate.

TENSIONED SYSTEM USING SINGLE CORD TIDY

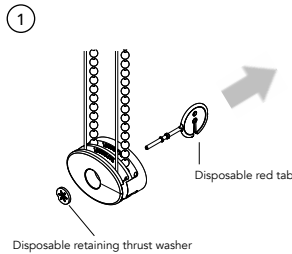
If the blind is fitted with a cord then a cord tidy must be attached. This must be fitted to the wall as follows.

FITTING A DOUBLE CORD & CHAIN TIDY BLINDS / FITTING A SINGLE CORD TIDY FOR MOTORISED BLINDS

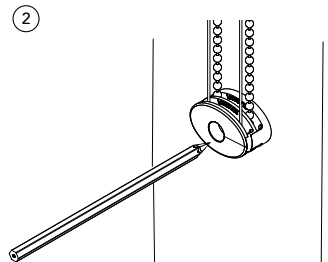
The cord and chain tidy is a three piece device with a back plate, a centre piece and a front plate. The space between back and centre pieces will hold the chain and the area between the centre and front plate will hold the cord. For motorised: there will be a single cord tidy and will be a two piece device with a front and back plate. The space between the back and front piece will hold the cord.



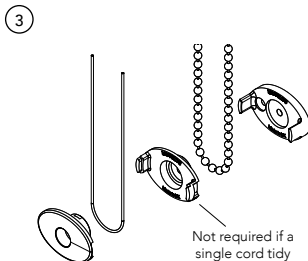
The cord tidy will arrive with a red tab fitted to it.



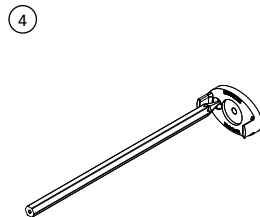
Remove the red tab by freeing up the chain and then pulling out the red tab.



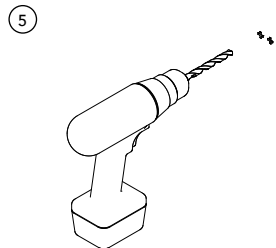
Position the cord tidy to the wall at the furthest distance below the vertical system adding appropriate tension to the cord and chain and mark its location.



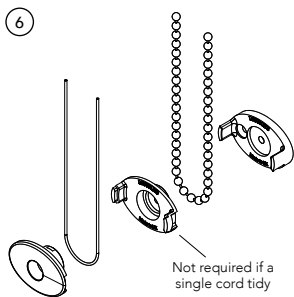
Split the cord & chain tidy.



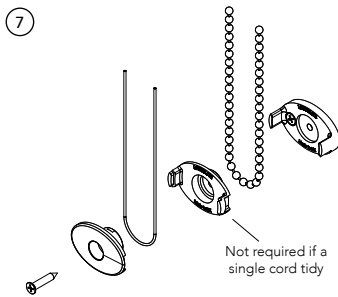
Mark the remaining offset hole position.



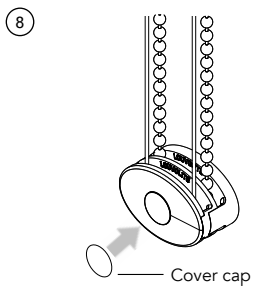
Drill and plug both location holes if necessary. Use both of the holes to fix the back piece of the cord & chain tidy to the wall.



Re-assemble the cord & chain tidy.

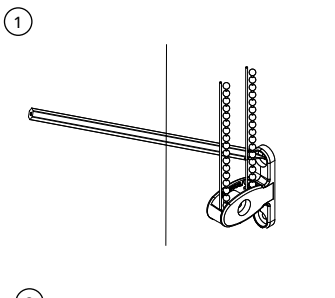


Fix it in position with a screw through the centre hole.

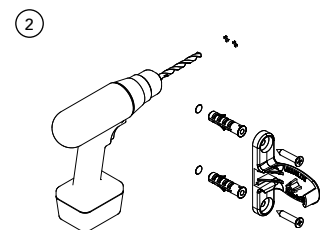


Push fit a cover cap over the screw hole opening.

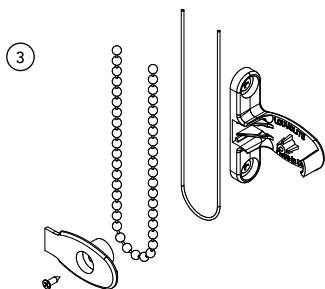
FITTING A FACE FIX CORD TIDY



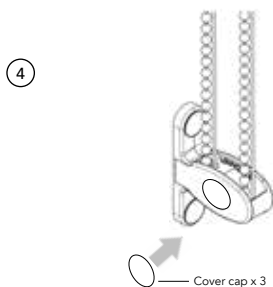
Position the cord tidy to the wall at the furthest distance below the headrail adding appropriate tension to the cord/ cord & chain tidy and mark its location.



Mark the remaining hole position before drilling and plugging both location holes if necessary.



Attach the cord/cord & chain and cover plate with the screw provided.



Push fit a cover cap over the screw hole opening.

OPERATING THE BLIND - CORD & CHAIN CONTROL

The cord and chain by definition has two controls. The cord which moves the louvres across the track and the chain which rotates the louvers between open and closed.

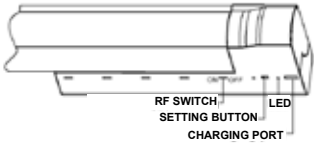
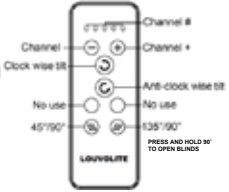
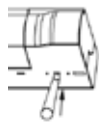



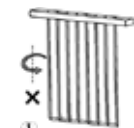


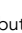
Note: Do not attempt to open the blinds with the louvres in the closed position always turn them 90 degrees to the track before operating the cord control.

OPERATING THE BLIND - MOTORISED

A step by step guide on how to pair your remote control to the blind motor and using the remote.

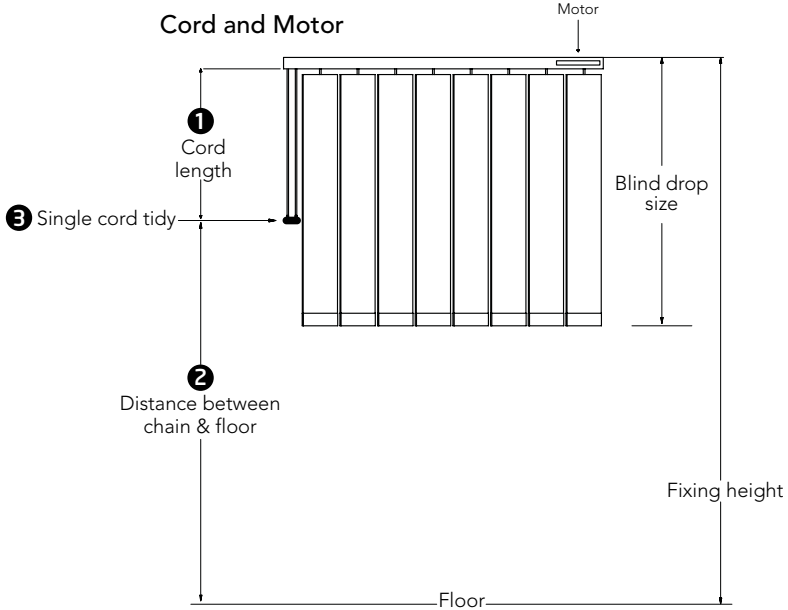
The cord will move the louvres across the track and the motor rotates the louvers between open and closed. To enable the louvres to open and close, pull down on one cord to open across and the other strand of the cord to restore the louvres.

Note: Do not attempt to open the blinds with the louvres in the closed position always turn them 90 degrees to the track before operating the cord control.

<p>Technical Data</p>	<p>Battery Specification: Li-ion Battery, 3.7V.</p> <p>Please charge the battery when the motor alarm beeps or motor fails to turn the blind.</p>   <p style="text-align: right;">Remote Control</p>			
Operation	Step	Operation	Result	Illustration
<p>Pairing remote control with motor</p>	<p>PLEASE SKIP STEP ONE AND GO TO THE STEP TWO IF THE MANUFACTURER HAS PROGRAMMED A REMOTE WITH A MOTOR BEFORE DELIVERY.</p>			
	1	Press and hold down the SETTING button on the motor.	Release this button when the LED flashes red.	  
2	Press the CONFIRM button on the back of the remote control	When the LED flashes green the remote will now been paired with the motor	  	
<p>Changing motor rotation direction</p>	1	Press  button and the  button at the same time to change the motor direction		Release both buttons when the Green LED flashes. The direction will now be reversed

Operation	Step	Operation	Result	Illustration
THE WHOLE LIMIT SETTING MUST BE FINISHED AT ONE TIME				
Set up tilt range	1	Press and hold LIMIT button on the back of the remote	Release the button when the Red LED flashes on the motor	
	2	Motor turns in a clockwise direction and stops when you reach the end	Red LED flashes	
	3	Motor turns in a anticlockwise direction and stops when it reaches the end	Red LED flashes. Now the limit settings have been done for both ways	
Program a second remote with an already programmed remote	1	Press and hold the LIMIT button on the first programmed remote A then press the CONFIRM button	Release both buttons when the Red LED flashes	
	2	Now press the CONFIRM button on remote B	Green LED flashes, now all programmed remotes have been detected	
Delete all remotes	1	Press SETTING button on the motor 3 times	Green LED flashes, now all programmed remotes have been deleted	
Delete one remote from the motor	2	Press CONFIRM button 2 times on the back of the remote	Green LED flashes, now the remote has been deleted from the motor	
Charging	<p>The motor works with Li-ion battery, please charge it when the motor alarms or the operation is faltering Please charge the motor using a professional charger DCSV. Charging time: Charge for 6 hours or when the indicator turns Green. Please remove the charger once it's fully charged.</p>			
FAQ	<p>If nothing works then please check the following:</p> <ul style="list-style-type: none"> - Make sure you change the remote battery first. - If the motor continues to turn continuously, the user hasn't setup the limit successfully. You will need to re-set the limit. 			

CHILD SAFETY - BS EN 13120 GUIDELINES FOR VERTICAL BLINDS



1 IF FIXING HEIGHT IS UNKNOWN

- Blind drop \leq 2.5 metres, the cord/chain length must be \leq 1 metre.
- Blind drop $>$ 2.5 metres, the cord/chain length must be drop of blind minus 1.5 metres.

2 IF FIXING HEIGHT KNOWN

All blind drop sizes, distance between floor and bottom of cord/chain must be greater than 1.5 metres.

3 CORD TIDY

Affix cord tidy to wall at the maximum distance possible from the blind control mechanism ensuring all operating cords are taut (cords no more than 50mm apart at entry/exit of cord tidy).

NOTE TO INSTALLER: Please ensure general child safety warning tag is fitted on the product.

WARNING

Young children can be strangled by loops in pull cords, chains, tapes and inner cords that operate the product.

To avoid strangulation and entanglement, keep cords out of the reach of young children. Cords may become wrapped around a child's neck. Move beds, cots and furniture away from window covering cords.

Do not tie cords together. Make sure cords do not twist and create a loop.

