



Möhlenhoff

Möhlenhoff Designer Grille

The Quick-Change Artist of Grille Covers



Perfection with Variety

At Home in Every Environment: **Distinction through Design**



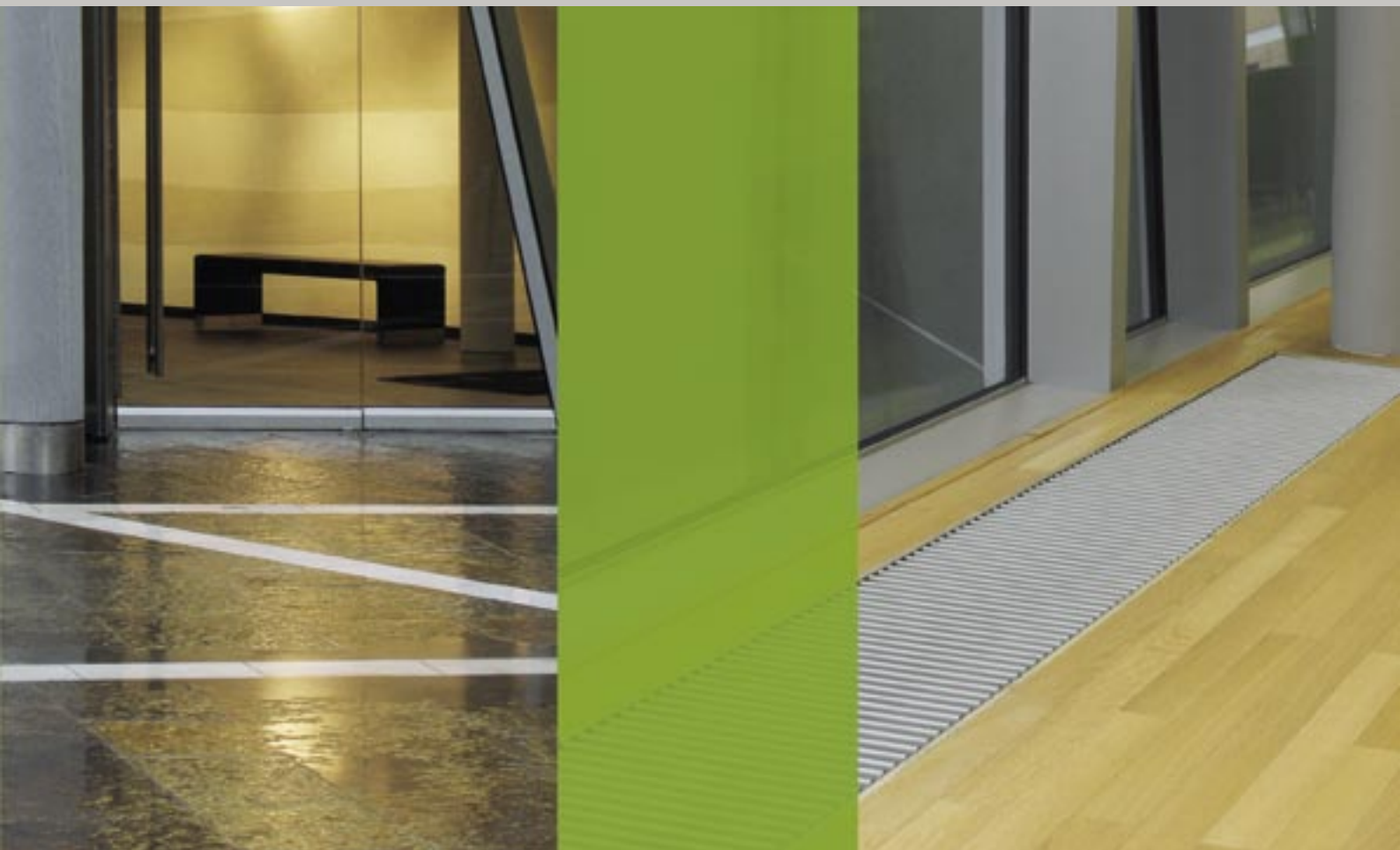
Möhlenhoff Designer Grille

With the Designer Grille, Möhlenhoff offers an ideal product for covering heating, ventilation, and convactor troughs.

The Designer Grille is a highly-developed product, proven in daily use for more than 10 years. The rounded aluminium bars accentuate the modern, harmonic, and functional design of the cover grille. The Designer Grille is available in roll-up, linear, or diagonal versions. The Designer Grille easily complies with all technical criteria such as step-on quietness, load capacity, durability, and safety. Ease of installation and maintenance are added benefits. The Designer Grille is suitable for a multitude of special solutions, such as round arches, bevels, or recesses.

Whether for prominent buildings or exclusively designed homes, designer accents or low-visibility functionality, the designer grille provides individual, dependable, and sophisticated décor solutions. The combination of applications and optical design possibilities is limitless.



**Heating Cover**

Expertly cover heating systems such as built-in radiators, trough convectors or floor paving convectors from any manufacturer.

**Ventilation Cover**

Ideal for covering outlet openings of central or de-central ventilation systems.

**Hygienic, Functional or Replacement Covers**

Safely cover drains, vents, or light wells – the perfect alternative to the screen.

**Water Overflow Cover**

Overflow drains and drip surfaces in bathrooms and wellness areas can be covered in an elegant and individualised way.

As an innovative system manufacturer, Möhlenhoff is a certified ISO 9001:2000 company.

Our products comply with the highest requirements regarding safety, workmanship, quality, and consistency.

All products are tested by our in-house laboratory. We apply only the highest criteria.





Surfaces

Anodised Shades

Finishing the surface by anodising emphasises the character of the rod material and integrates the grille perfectly into any architectural style. Additional to the standard shades: natural, light brass, brass, light bronze, bronze and black, many other anodised shades are available on request. These surface variants are marked by their unostentatious elegance.

By combining optimal functionality with the extensive and unique surface choices, Möhlenhoff removes the limits of design possibilities.

The Designer Grille satisfies the highest of aesthetic expectations. Due to the first-class processing of materials and its unique shape, the Designer Grille is always a perfectly formed detail.

Anodised shades, RAL colours, and stylish patterns are available to enhance individual expression. Additionally, special colours or patterns can be made to fit individual requirements.

Be it a classical room design, a modern arrangement, or an individual ambience, the Möhlenhoff Designer Grilles always achieve perfect harmony with their environment.

The Designer Grille is a signature-piece for interior designers, architects, and heating installers, not-to-mention a long-term highlight to the building owner. No other cover grille on the market offers comparable advantages.

A Lively Change of Colour: **Tailored to Individual Taste**



Colours

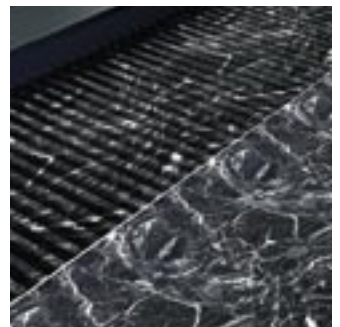
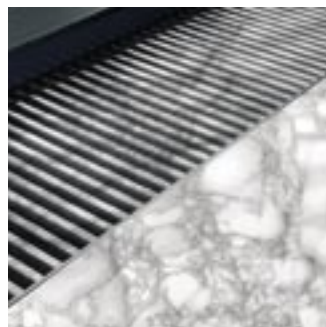
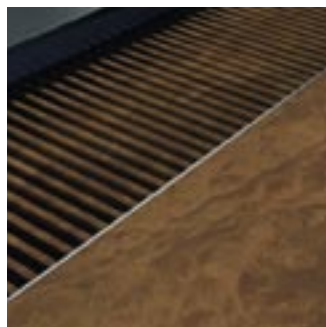
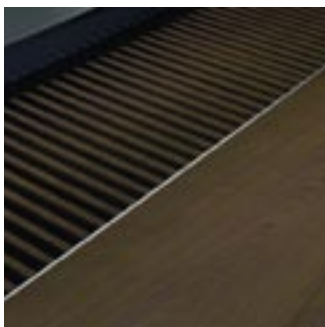
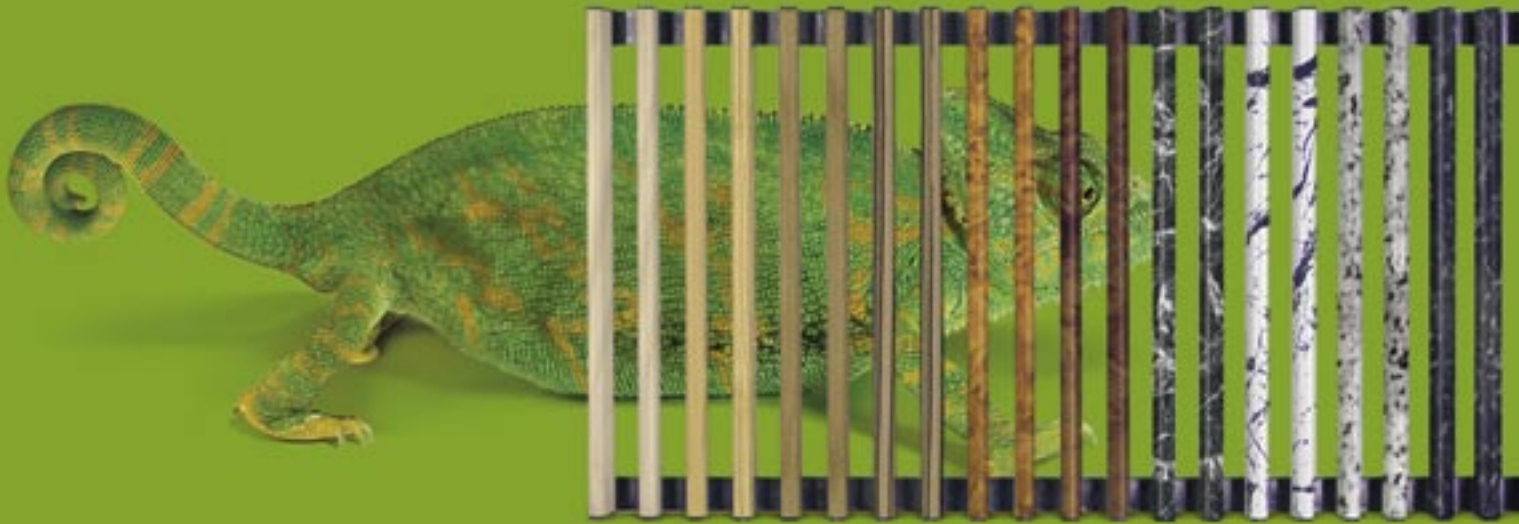
There are no limits to the design possibilities.

All RAL colours can be created with the powder coating procedure.

For a truly unique interior design, special colours can be used to fulfil individual design wishes.



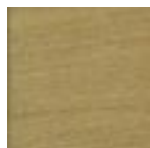
Master of Imitation: Unlimited Decoration Possibilities



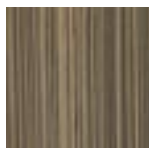
1



2



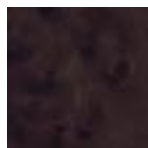
3



4



5



6



7



8



9



10



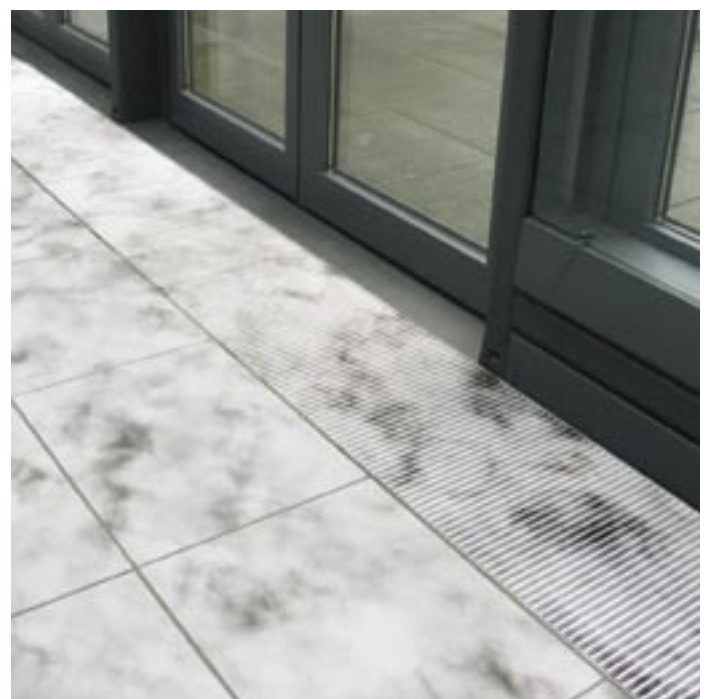
Décor

Décor Examples

- 1 Birch
- 2 Cherry tree
- 3 Oak tree
- 4 Zebrano
- 5 Root wood
- 6 Myrtle
- 7 Black marble
- 8 White marble
- 9 White granite
- 10 Black granite

Individual designs to match reference samples are possible.

Floor coverings can be optically extended or stylishly accentuated by means of exclusive designs. A proven refinement procedure from the automotive industry allows the aluminium surface of the designer grille rods to imitate natural-looking patterns in a high-quality and durable way. Thus, the physical advantages of aluminium can be combined with the appearance of fine woods, natural marble, granite variants, or creative patterns. The creativity of our customers is unlimited. To meet these expectations, we can produce almost all designs and colours.





Designer Roll-Up Grille

The Designer Roll-up Grille is a classic Möhlenhoff product. This very popular Designer Grille is characterised by easy handling and cleaning. Additionally, the length is easily adapted on site.



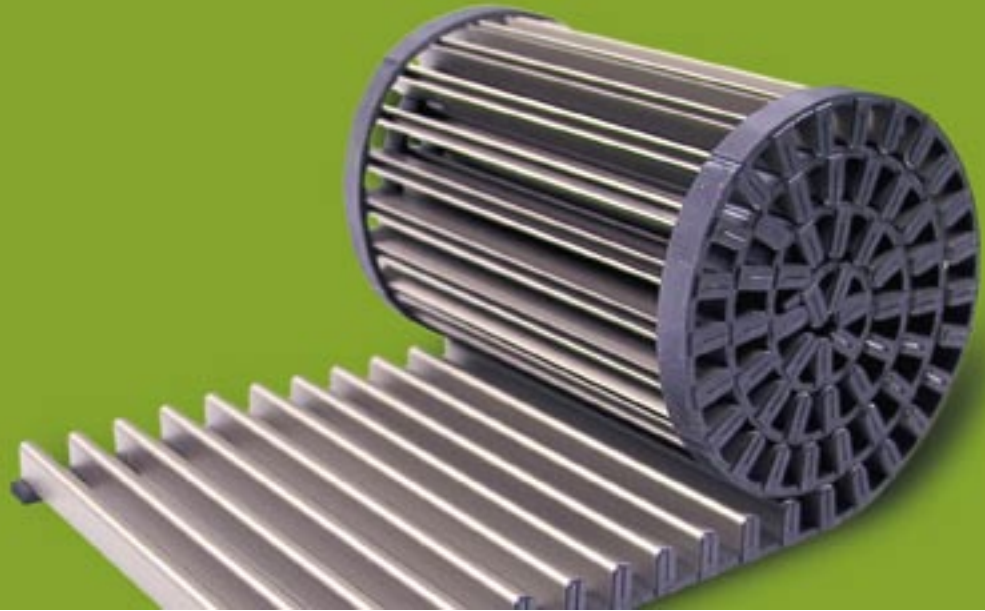
Designer Grille

The Designer Grille is offered in linear, roll-up and diagonal versions. The different Designer Grille versions are built in the same practical way. The individual rods of the grille are connected to each other by means of the patented plastic connectors with rubber bearings and covered edges. High quality materials enhance the stable construction, while ensuring easy handling, quiet and safe step-on use, and valuable stability.

Apart from the unlimited optical variations of the aluminium profile bars, the designer grille can be adapted to almost every room environment by means of special solutions and accessories.

The Designer grille insures that rooms retain their elegant appearance by flawlessly adapting to the environment.

Distinct, Beautiful and Practical: **Designer Grille Design Variants**

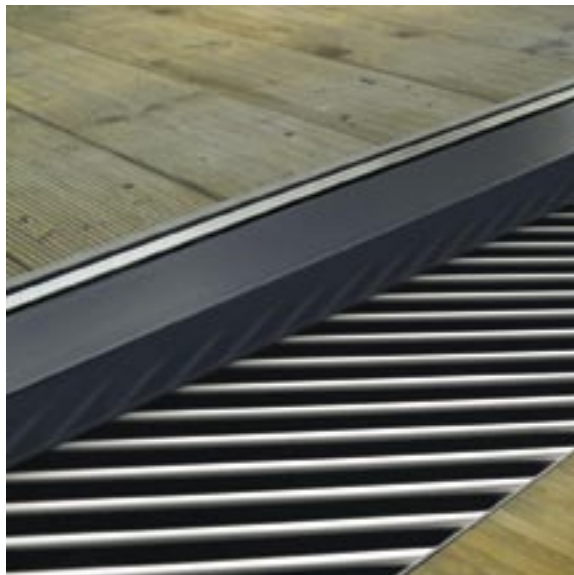
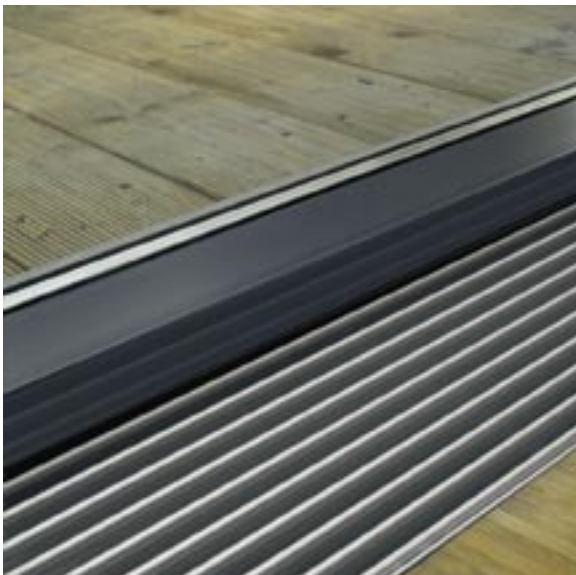


Designer Linear Grille

The linear grille is mostly used when the aluminium rods are to be arranged, for optical reasons, in parallel to large window facades..

Designer Diagonal Grille

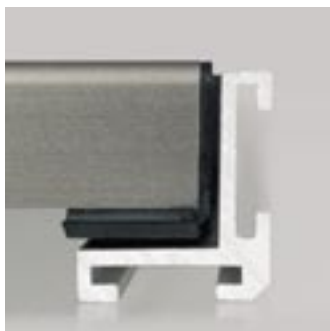
The diagonal grille is used in room situations which call for a special appearance and elegance. It unites the optical advantages of the roll-up grille and the linear grille.



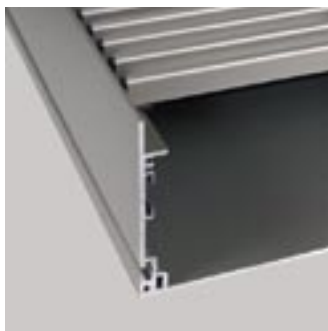


Accessories and Special Solutions

Frame profiles



System Troughs



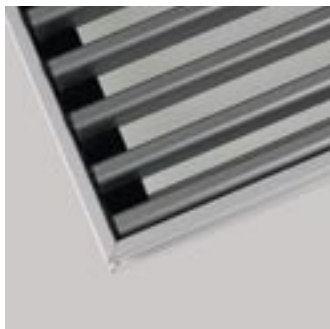
Modern architecture presupposes that a perfect solution can be delivered for each room situation and for each design environment. Using different solutions and well thought-out accessories, the Designer Grille can be beautifully adapted even to the most difficult room conditions.

Z and L frame profiles are available for the insertion of installation frames. Fixing devices can be delivered for specially fastening the roll-up grille. Complete system troughs can also be ordered in different widths and lengths.

Special solutions extend the spectrum of possibilities. Recesses, bevels, mitres, arcs, as well as light-bands for illumination situations and device mounting plates for electric outlets for trough systems are a part of our product line.

Just show us a plan, sketch or blueprint, and give us details about the construction requirements on site.

We will find your optimal solution!



From All Angles: **Adaptation to Room Conditions**

Bevels, Arcs and Recesses

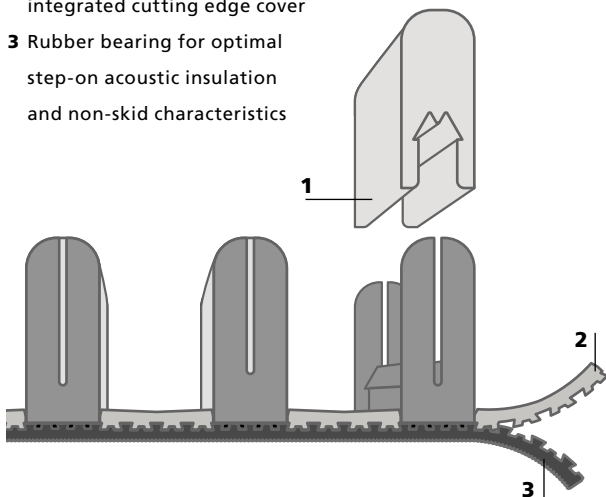




Product Innovation

The design principle is a unique feature of the Designer Roll-up Grille.

- 1 Exchangeable individual rods with rounded upper edges
- 2 Plastic connectors with integrated cutting edge cover
- 3 Rubber bearing for optimal step-on acoustic insulation and non-skid characteristics



The Designer Grille was designed for daily use in pass-through areas of residential and office buildings. The durability and load capacity were developed to withstand the daily wear and tear.

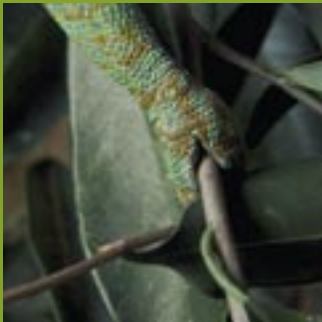
The Designer Grille was tested for its chemical, thermal, and mechanical strength. Furthermore, it is ultraviolet resistant. Thus, it is appropriate for swimming pool areas. The roll-up grille versions can easily be cleaned in the dishwasher when rolled.

The Designer Grille surpasses safety standards. The integrated edge cover minimises both the danger of injury and rattling in case of lateral tolerance.

The non-slip characteristic ensures safe step-on use. Every craftsman will enjoy the easy installation and handling. The Designer Grille is easy to maintain; the exchange of individual rods is possible on site without difficulties.

Always a Step Ahead: Innovation Through Experience

Quiet & Safe



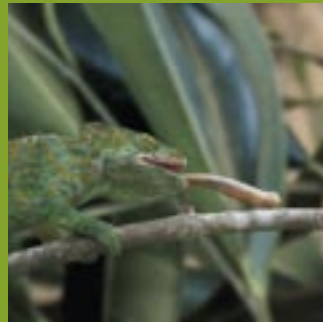
The rounded profile rods ensure comfortable step-on characteristics of the Designer Grille. The rubber bearing makes it non-skid and insulates step-on noises.

Handy



Only the Designer Grilles manufactured by Möhlenhoff feature exchangeable individual rods and a safe edge cover. This avoids rattling noises if there is lateral tolerance in the guiding frame.

Flexible



The roll grilles can be easily cut to length on site. Roll lengths can be delivered in up to 10 meters per unit. For transport or cleaning purposes, they can be rolled up tightly.

Dishwasher Safe



The Designer Roll-up Grille ensures a high chemical, thermal and mechanical strength. Simply roll the grille and put it into the dishwasher when you want to clean it.



Service

When deciding on a Möhlenhoff product, our customers can rely on our extensive service.

A well structured sales and service organisation, representatives all over Germany, as well as international sales partners ensure a close proximity to our customers.



Our customer service will always assist you with competent consultancy from planning through ordering. The technical service staff will always answer your technical questions.

Contact Customer Service

+49 5341 / 8475-12

Contact Technical Service

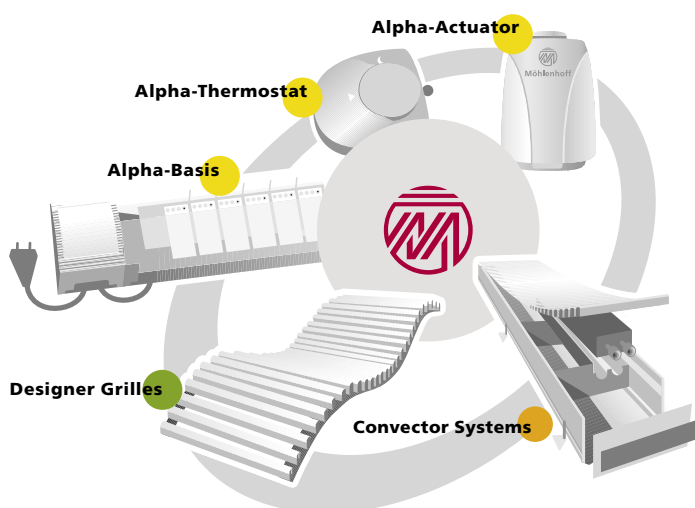
+49 5341 / 8475-47



As a system manufacturer, Möhlenhoff offers a perfectly integrated system of climate control technology, heating components, under-floor convectors, and cover grilles – all at one stop.



Fast deliveries are always on time. We can optionally deliver to separate addresses to suit your installation needs. All of this is offered at an unbeatable price/performance ratio.



Möhlenhoff Future through Ideas

Headquartered in Salzgitter, Lower Saxony, Möhlenhoff Wäremetechnik GmbH is the worldwide industry leader in products and systems for heating and climate control technology. For individual roomtemperature control, floor heating, or aesthetic grill covers, the Möhlenhoff solution stands for superior quality and value.

The Möhlenhoff brand stands for groundbreaking and high-quality product solutions. The Möhlenhoff employees have the strength to convert visions to practice-oriented solutions with unmatched quality. We have the ability to consistently realise the customer's expectations.

When deciding on a Möhlenhoff product, our customers can rely on our extensive service. The marketing and service colleagues will provide top-notch assistance from planning to after-sale support. Our international presence guarantees superior service, tailored to the individual needs of the customer.

The future of Möhlenhoff, its ideas and achievements, are reached through the satisfaction of its partners and customers.

True to our Motto: Future through Ideas.



Möhlenhoff

Möhlenhoff Wärmetechnik GmbH

Mailing Address:
PO BOX 10 05 25
DE-38205
Germany

Headquarters:
Museumstrasse 54a
DE-38229 Salzgitter
Germany
Telephone: +49 53 41 / 84 75-0
Fax: +49 53 41 / 84 75-99
kontakt@moehlenhoff.de
www.moehlenhoff.com



Extensive information material

Our System Convectors brochure gives you an overview of the unique advantages of our designer grilles and system convectors. The Planning Manual demonstrates the simple planning and the perfect mounting options of the system convectors.

We will gladly send you these documents on request.

8-D14-43-002 Rev 1.0

Technical changes reserved.

Reprint, including partial reprint, only admissible with our consent.