



# Roofing

product catalogue

## Never miss an update again...

Ensure you receive the latest edition of this brochure and new product information as soon as it's available.

[Click here to register](#)

Marley Eternit's extensive range of tiles and slates, dry fix and ventilation systems, fittings and fixings has been successfully enhancing and protecting our roofs for over 100 years.

We want to make your project as straightforward and successful as possible, so we're on hand to offer practical, experienced support in a range of useful ways.

This can be delivering urgent samples where and when they're needed; providing products that help you achieve an A+ rating and gain credits for your buildings; supplying bespoke fixing specifications, offering complete dry fixed ventilation solutions and much more.

In short, we're here to support you in any way we can and we're always happy to take some of the load off your shoulders.

### Let ME lighten your load

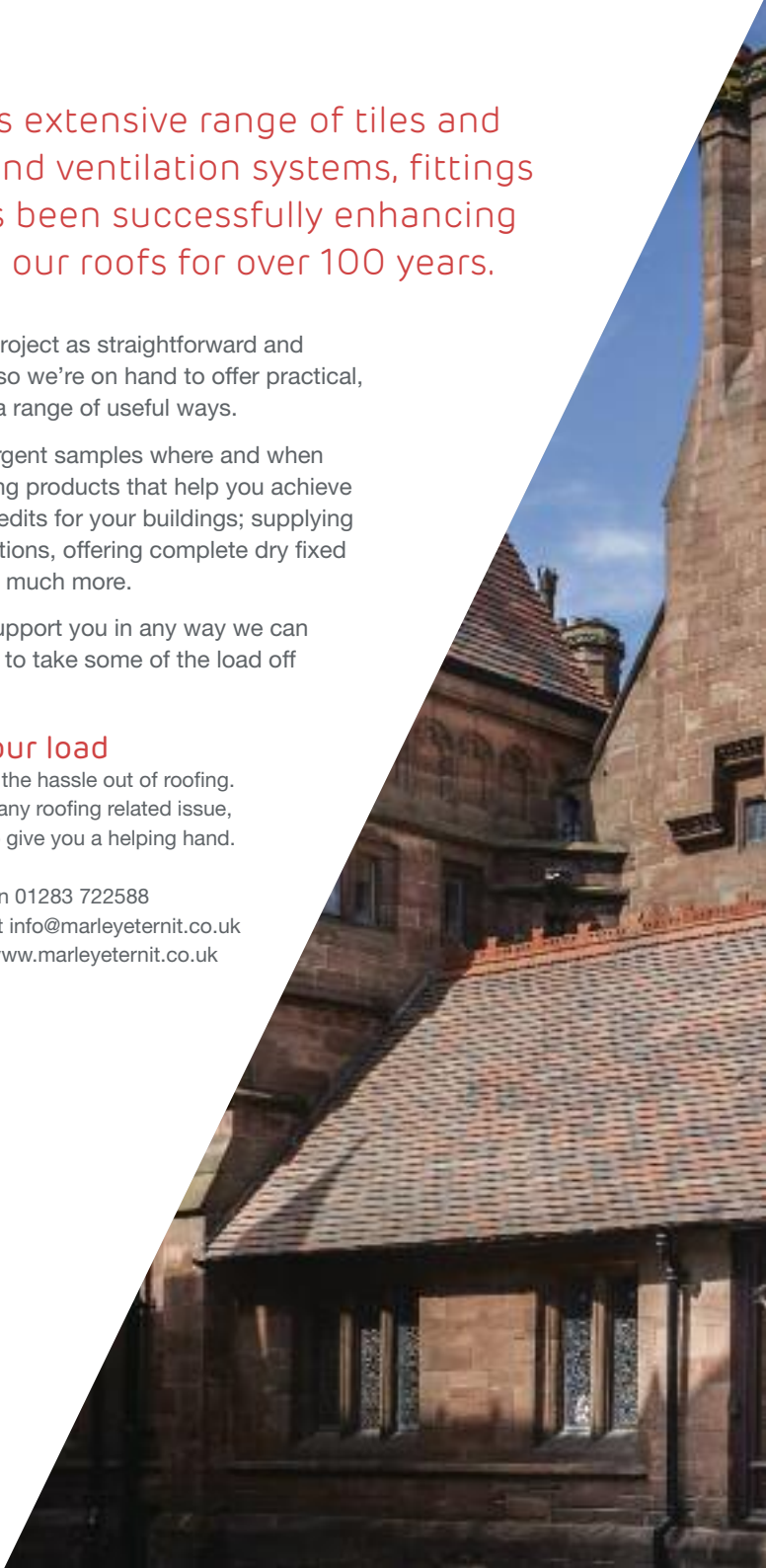
Trust Marley Eternit to take the hassle out of roofing. If you ever need advice on any roofing related issue, you can rely on our team to give you a helping hand.

Call on 01283 722588  
Email at [info@marleyeternit.co.uk](mailto:info@marleyeternit.co.uk)  
Or visit [www.marleyeternit.co.uk](http://www.marleyeternit.co.uk)



All factories certified to  
ISO 9001, ISO 14001,  
OHSAS 18001

**nbsPlus**



## Contents

- |    |                           |    |                             |
|----|---------------------------|----|-----------------------------|
| 2  | Introduction              | 15 | Fibre cement slates         |
| 4  | Minimum banded quantities | 22 | Concrete plain tiles        |
| 5  | Resources                 | 24 | Concrete interlocking tiles |
| 6  | Market sectors            | 38 | Fittings and accessories    |
| 7  | Clay plain tiles          | 46 | Dry fix and ventilation     |
| 12 | Clay interlocking tiles   | 55 | Other products              |

# Minimum banded quantities

	No. per band	Bands per pallet	Quantity per pallet
<b>Fibre cement slates</b>			
600 x 300mm slates	15	72	1080
600 x 600mm doubles	10	30	300
Thrutone 500 x 250mm	20	70	1400
Thrutone 500 x 250mm doubles	10	32	320
Thrutone shapes and colours	15	72	1080

## Concrete tiles

Plain tiles	10	90	900
Plain eaves/top	10	120	1200
Plain tile and half	10	54	540
Anglia	38	12	456
Ashmore	6	46	276
Double Roman, Mendip & Wessex	32	6	192
Edgemere Range	40	6	240
Ludlow Major	36	6	216
Ludlow Plus	43	12	516
Modern and Duo Modern	32	6	192

## Concrete fittings

Segmental ridge tiles	5	24	120
Modern ridge tiles	5	28	140

## Clay plain tiles

Acme/Hawkins tiles	12	105	1260
Acme/Hawkins eaves	15	100	1500
Acme/Hawkins tile and a half	12	63	756
Ashdowne tiles	11	105	1155
Ashdowne eaves	15	100	1500
Ashdowne tile and a half	12	63	756
Creasing tiles*	12	105	1260

## Clay interlocking tiles

Maxima tiles*	4	60	240
Maxima LH verge tiles	4	20	80
Melodie tiles*	6	40	240
Melodie LH verge tiles	6	20	120

\* Available as full pallets only

# Resources

## Technical advice

Our Technical Advisory Service is staffed by a qualified team with specialist knowledge.

**Tel 01283 722588**

**E-mail [info@marleyeternit.co.uk](mailto:info@marleyeternit.co.uk)**

## Fixing instructions and literature

Comprehensive sitework, fixing and installation literature and videos:

**[marleyeternit.co.uk/resources](http://marleyeternit.co.uk/resources)**

All current product and technical literature can be downloaded:

**[marleyeternit.co.uk/downloads](http://marleyeternit.co.uk/downloads)**

## Samples

Samples of clay interlocking and plain tiles, fibre cement slates and concrete tiles are available on request.

**Tel 01283 722588**

**[marleyeternit.co.uk/samples](http://marleyeternit.co.uk/samples)**

## Stockist information

To find details for stockists of Marley Eternit products, visit:

**[marleyeternit.co.uk/stockists](http://marleyeternit.co.uk/stockists)**

## Customer services

Knowledgeable and friendly staff are available to offer quotations, expert advice, deal with orders and all other enquiries.

**Tel 08705 626400**

**E-mail [info@marleyeternit.co.uk](mailto:info@marleyeternit.co.uk)**

## Sales support

Our Area Sales Managers have in-depth knowledge of your local area. They are available to visit your site to carry out a roof survey, and to offer specific solutions for both new build and refurbishment projects.

**[marleyeternit.co.uk/localcontacts](http://marleyeternit.co.uk/localcontacts)**

## Tilefix

A tool to create fixing specifications based on the geographical location and building dimensions of specific building projects.

**[marleyeternit.co.uk/tilefix](http://marleyeternit.co.uk/tilefix)**

## Estimator

Tool designed to create a complete bill of materials for your roofing project, based on a wide range of roof shapes:

**[marleyeternit.co.uk/estimator](http://marleyeternit.co.uk/estimator)**

## Training centre

We have a purpose-built training centre where we are able to impart our expertise through a range of practical and classroom courses.

To find out more about our courses, visit:

**[marleyeternit.co.uk/training](http://marleyeternit.co.uk/training)**

## Health and safety

In line with the requirements of the Health and Safety at Work Act, The Consumer Protection Act and The Chemicals (Hazard Information and Packaging for Supply) Regulations and the Control of Substances Hazardous to Health Regulations, **please view or download copies of our COSHH data sheets at [marleyeternit.co.uk/coshh](http://marleyeternit.co.uk/coshh)**



# Market sectors

Small element roofing can be used to create unique roof designs across all market sectors. To see a range of our case studies, please visit [marleyeternit.co.uk/casestudies](http://marleyeternit.co.uk/casestudies)



Renovation



Healthcare



Housing



Public sector



Education



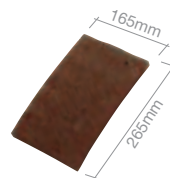
Leisure



# Clay plain tiles

Acme single camber, Heather Blend, Dogs Trust, Telford

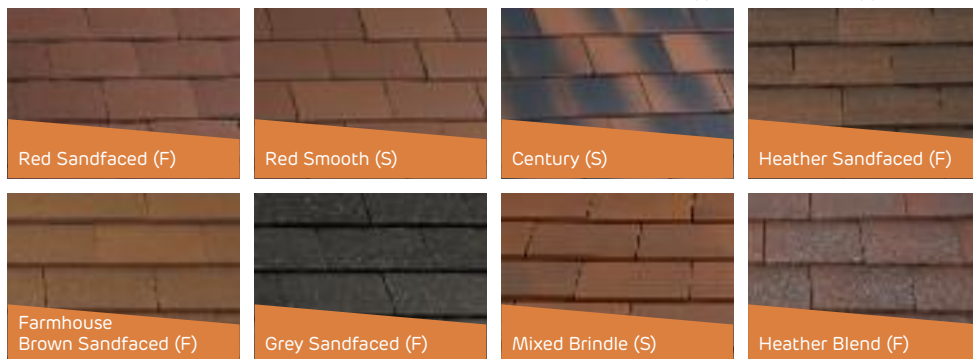
# Acme single camber



Natural clay, machine made, single cambered (longitudinal) plain tiles, offering crisp, contemporary lines and the warmth and character of clay at an affordable price.

## Colour availability

**Key** (F) Fine sanded finish (S) Smooth finish



## Technical data

Size of tile	265mm x 165mm	
Minimum pitch*	30°	
Maximum pitch	90°	
Minimum headlap	65mm (roof)	37.5mm (vertical)
Maximum gauge	100mm (roof)	115mm (vertical)
Tile thickness	11 mm (nominal)	
Cover width	165mm (nominal)	
Covering capacity (net)	60 tiles/m <sup>2</sup> at 100mm gauge (roof)	53 tiles/m <sup>2</sup> at 115mm gauge (vertical)
Weight of tiling (approx.)	64kg/m <sup>2</sup> (0.63 kN/m <sup>2</sup> ) at 100mm gauge (roof)	56kg/m <sup>2</sup> (0.55 kN/m <sup>2</sup> ) at 115mm gauge (vertical)
Battens required (net)	10.0 lin.m/m <sup>2</sup> at 100mm gauge (roof)	8.7 lin.m/m <sup>2</sup> at 115mm gauge (vertical)
Batten size recommended	38 x 25mm for rafters/supports not exceeding 600mm centres (fixed to BS 5534)	
Tile nails	38mm x 2.65mm	
Authority	BS EN 1304	

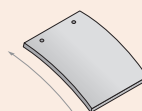
\* The minimum recommended pitch and lap may be influenced by special circumstances, please contact the Technical Advisory Service.

## Sustainability

- ✓ A+ rated in the BRE Green Guide (based on generic rating for UK produced clay plain tiles  
Element Ref: 812410006)
- ✓ BES 6001 (Responsible Sourcing) certified
- ✓ Independent carbon footprint certification

## Product information

**Tile camber**  
Single camber



**Feature tiles**

For advice on the use of Feature tiles in main roof areas contact the Technical Advisory Service.

† Made to order



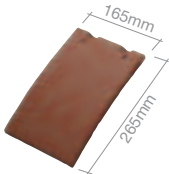
Club†



Bullnose†



# Hawkins



Single cambered (longitudinal), machine made clay tile, manufactured for over 150 years. This heritage, combined with modern firing techniques, gives a unique colour range.

## Colour availability

**Key** (F) Fine sanded finish (S) Smooth finish (T) Textured finish



Dark Heather (F)



Staffordshire Mixture (F)



Staffordshire Blue (F)



Blue Smooth (S)



Fired Sienna (T)

### Technical data

Size of tile	265mm x 165mm	
Minimum pitch*	30°	
Maximum pitch	90°	
Minimum headlap	65mm (roof)	37.5mm (vertical)
Maximum gauge	100mm (roof)	115mm (vertical)
Tile thickness	11mm (nominal)	
Cover width	165mm (nominal)	
Covering capacity (net)	60 tiles/m² at 100mm gauge (roof)	53 tiles/m² at 115mm gauge (vertical)
Weight of tiling (approx.)	64kg/m² (0.63 kN/m²) at 100mm gauge (roof)	56kg/m² (0.55 kN/m²) at 115mm gauge (vertical)
Battens required (net)	10.0 lin.m/m² at 100mm gauge (roof)	8.7 lin.m/m² at 115mm gauge (vertical)
Batten size recommended	38 x 25mm for rafters/supports not exceeding 600mm centres (fixed to BS 5534)	
Tile nails	38mm x 2.65mm	
Authority	BS EN 1304	

\* The minimum recommended pitch and lap may be influenced by special circumstances, please contact the Technical Advisory Service.

### Sustainability

- ✓ A+ rated in the BRE Green Guide (based on generic rating for UK produced clay plain tiles  
Element Ref: 812410006)
- ✓ BES 6001 (Responsible Sourcing) certified
- ✓ Independent carbon footprint certification

### Product information

**Tile camber**  
Single camber

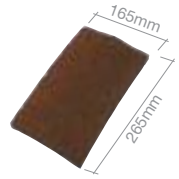
**Feature tiles**  
For advice on the use of Feature tiles in main roof areas contact the Technical Advisory Service.

† Made to order

Club†

Bullnose†

# Acme double camber



Natural clay, machine made clay plain tiles with longitudinal and latitudinal camber are able to create highly textured roofscapes with accentuated light and shade.

## Colour availability

**Key** (F) Fine sanded finish (S) Smooth finish



Technical data		
Size of tile	265mm x 165mm	
Minimum pitch*	35°	
Maximum pitch	90°	
Minimum headlap	65mm (roof)	37.5mm (vertical)
Maximum gauge	100mm (roof)	115mm (vertical)
Tile thickness	11 mm (nominal)	
Cover width	165mm (nominal)	
Covering capacity (net)	60 tiles/m <sup>2</sup> at 100mm gauge (roof)	53 tiles/m <sup>2</sup> at 115mm gauge (vertical)
Weight of tiling (approx.)	64kg/m <sup>2</sup> (0.63 kN/m <sup>2</sup> ) at 100mm gauge (roof)	56kg/m <sup>2</sup> (0.55 kN/m <sup>2</sup> ) at 115mm gauge (vertical)
Battens required (net)	10.0 lin.m/m <sup>2</sup> at 100mm gauge (roof)	8.7 lin.m/m <sup>2</sup> at 115mm gauge (vertical)
Batten size recommended	38 x 25mm for rafters/supports not exceeding 600mm centres (fixed to BS 5534)	
Tile nails	38mm x 2.65mm	
Authority	BS EN 1304	

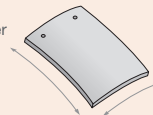
\* The minimum recommended pitch and lap may be influenced by special circumstances, please contact the Technical Advisory Service.

## Sustainability

- ✓ A+ rated in the BRE Green Guide (based on generic rating for UK produced clay plain tiles  
Element Ref: 812410006)
- ✓ BES 6001 (Responsible Sourcing) certified
- ✓ Independent carbon footprint certification

## Product information

**Tile camber**  
Double camber



**Feature tiles**

For advice on the use of Feature tiles in main roof areas contact the Technical Advisory Service.

† Made to order



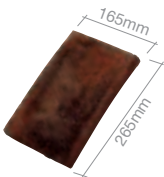
Club†



Bullnose†

# Ashdowne

Handcrafted clay plain tiles offer a warm, mellow appearance, with a granular texture and slight random irregularities that make each tile unique.



## Colour availability

Key (F) Fine sanded finish



Aylesham Mix (F)



Ashurst (F)

Technical data		
Size of tile	265mm x 165mm	
Minimum pitch*	35°	
Maximum pitch	90°	
Minimum headlap	65mm (roof)	37.5mm (vertical)
Maximum gauge	100mm (roof)	115mm (vertical)
Tile thickness	11mm (nominal)	
Cover width	165mm (nominal)	
Covering capacity (net)	60 tiles/m² at 100mm gauge (roof)	53 tiles/m² at 115mm gauge (vertical)
Weight of tiling (approx.)	65kg/m² (0.64 kN/m²) at 100mm gauge (roof)	57kg/m² (0.56 kN/m²) at 115mm gauge (vertical)
Battens required (net)	10.0 lin.m/m² at 100mm gauge (roof)	8.7 lin.m/m² at 115mm gauge (vertical)
Batten size recommended	38 x 25mm for rafters/supports not exceeding 600mm centres (fixed to BS 5534)	
Tile nails	38mm x 2.65mm	
Authority	BS EN 1304	

\* The minimum recommended pitch and lap may be influenced by special circumstances, please contact the Technical Advisory Service.

Sustainability

✓

A+ rated in the BRE Green Guide (based on generic rating for UK produced clay plain tiles  
Element Ref: 812410006)

✓

BES 6001 (Responsible Sourcing) certified

✓

Independent carbon footprint certification

Product information

Tile camber

Single camber

Feature tiles

For advice on the use of Feature tiles in main roof areas contact the Technical Advisory Service.

† Made to order

Club†

Bullnose†

A close-up photograph of a roof covered in red clay interlocking tiles. The tiles are arranged in a regular, overlapping pattern, creating a series of vertical ridges and horizontal grooves. The color is a warm, natural red. A semi-transparent green banner is overlaid at the bottom of the image.

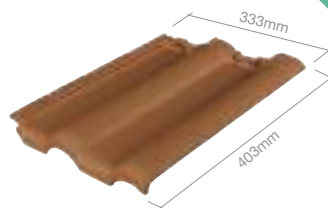
# Clay interlocking tiles

Melodie clay pantile, Natural Red



# Maxima

A clay interlocking double roman tile suitable for roof pitches down to 17.5° with an easy-to-lay open gauge.



## Colour availability



Natural Red

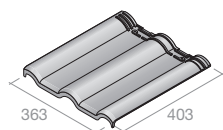
### Technical data

Size of tile	403mm x 333mm
Minimum pitch*	17.5°
Maximum pitch	70°
Headlap	75mm (minimum)
Batten spacing	328mm (at 75mm headlap)
Cover width	300mm (nominal)
Covering capacity (net)	10.1 tiles/m <sup>2</sup> at maximum gauge
Weight of tiling (approx.)	43.4kg/m <sup>2</sup> at 75mm headlap
Battens required (net)	3.05 lin.m/m <sup>2</sup> at 75mm headlap
Batten size recommended	38 x 25mm for rafters/supports not exceeding 450mm centres (fixed to BS 5534) 50 x 25mm for rafters/supports not exceeding 600mm centres (fixed to BS 5534)
Nail size	40mm x 3.35mm aluminium clout head
Fixing clips	Tile clip and nail (30271/30272), Eave clip (30452), Eave clip nail (30455), RH verge clip (30289), LH verge tile clip (30289), LH verge clip – standard tile (30290)
Authority	BS EN 1304

\* The minimum recommended pitch and lap may be influenced by special circumstances, please contact the Technical Advisory Service.

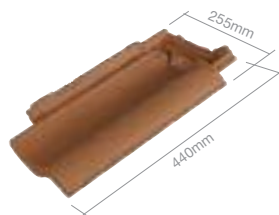
## Clay interlocking tile fittings

Available in Natural Red.



Left hand verge tile  
(double roll)

# Melodie



An interlocking single clay pantile with an easy to lay flexible gauge, which is suitable for roof pitches as low as 12.5°.

## Colour availability



Natural Red

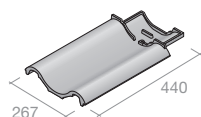
### Technical data

Size of tile	440mm x 255mm	
Minimum pitch*	12.5°	
Maximum pitch	70°	
Headlap	92mm (minimum)	
Batten spacing	314mm minimum gauge	348mm maximum gauge
Cover width	209mm (nominal)	
Covering capacity (net)	13.8 tiles/m <sup>2</sup> at maximum gauge	
Weight of tiling (approx.)	44kg/m <sup>2</sup> at 92mm headlap	
Battens required (net)	2.88 lin.m/m <sup>2</sup> at 92mm headlap	
Batten size recommended	38 x 25mm for rafters/supports not exceeding 450mm centres (fixed to BS 5534) 50 x 25mm for rafters/supports not exceeding 600mm centres (fixed to BS 5534)	
Nail size	40mm x 3.35mm aluminium clout head	
Fixing clips	Tile clip and nail (30456), Eave clip (30452), Eave clip nail (30455), RH verge clip (30285), LH verge tile clip (30285)	
Authority	BS EN 1304	

\* The minimum recommended pitch and lap may be influenced by special circumstances, please contact the Technical Advisory Service.

## Clay interlocking tile fittings

Available in Natural Red.



Left hand verge tile  
(double roll)



# Fibre cement slates

Rivendale, Blue-Black, Bishops Grosseteste University, Lincoln

# Rivendale

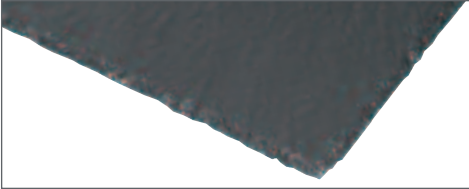
A finely detailed surface and dressed edges that together reproduce the attractive appearance of natural slate.



## Colour availability



## Edge profile



Technical data		
Size of slate	600mm x 300mm	
Minimum pitch*	Moderate exposure	22.5° (100mm headlap)
		20° (110mm headlap)
	Severe exposure	25° (100mm headlap)
		22.5° (110mm headlap)
Maximum pitch	90°	
Typical headlaps	100, 110mm	
Maximum gauge	245-250mm	
Slate thickness	4mm (nominal)	
Covering capacity (net)	13.4 slates/m² at 100mm headlap	
	13.6 slates/m² at 110mm headlap	
Weight of slating (approx.)	20.4kg/m² (0.20 kN/m²) at 100mm headlap	
	20.9kg/m² (0.20 kN/m²) at 110mm headlap	
Battens required (net)	4.00 lin.m/m² at 100mm headlap	
	4.08 lin.m/m² at 110mm headlap	
Batten size recommended	38 x 25mm for rafters/supports not exceeding 450mm centres (fixed to BS 5534)	
	50 x 25mm for rafters/supports not exceeding 600mm centres (fixed to BS 5534)	
Fixings	Slate nails (30mm x 2.65mm)	
	Copper disc rivets (19mm diameter x 2mm stem)	
Authority	BS EN 492	

\* The minimum recommended pitch and lap may be influenced by special circumstances, please contact the Technical Advisory Service.

## Sustainability

- ✓ A+ rated in the BRE Green Guide (based on generic rating for UK and Ireland produced fibre cement slates  
Element Ref: 812410008)
- ✓ Low carbon footprint of 13 CO<sub>2</sub>e/m<sup>2</sup>



# Garsdale

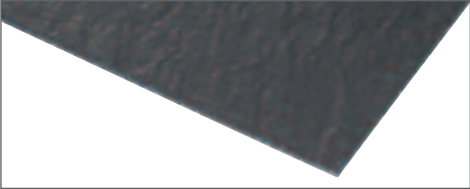
A detailed surface and square edge that closely resembles natural slate, but is easier and faster to install.



## Colour availability



## Edge profile



Technical data		
Size of slate	600mm x 300mm	
Minimum pitch*	Moderate exposure	22.5° (100mm headlap)
		20° (110mm headlap)
	Severe exposure	25° (100mm headlap) 22.5° (110mm headlap)
Maximum pitch	90°	
Typical headlaps	100, 110mm	
Maximum gauge	245-250mm	
Slate thickness	4mm (nominal)	
Covering capacity (net)	13.4 slates/m² at 100mm headlap	
	13.6 slates/m² at 110mm headlap	
Weight of slating (approx.)	20.4kg/m² (0.20 kN/m²) at 100mm headlap	
	20.9kg/m² (0.20 kN/m²) at 110mm headlap	
Battens required (net)	4.00 lin.m/m² at 100mm headlap	
	4.08 lin.m/m² at 110mm headlap	
Batten size recommended	38 x 25mm for rafters/supports not exceeding 450mm centres (fixed to BS 5534)	
	50 x 25mm for rafters/supports not exceeding 600mm centres (fixed to BS 5534)	
Fixings	Slate nails (30mm x 2.65mm)	
	Copper disc rivets (19mm diameter x 2mm stem)	
Authority	BS EN 492	

\* The minimum recommended pitch and lap may be influenced by special circumstances, please contact the Technical Advisory Service.

## Sustainability

- ✓ A+ rated in the BRE Green Guide (based on generic rating for UK and Ireland produced fibre cement slates Element Ref: 812410008)
- ✓ BES 6001 (Responsible Sourcing) certified
- ✓ Low carbon footprint of 13 CO<sub>2</sub>e/m²

# Birkdale

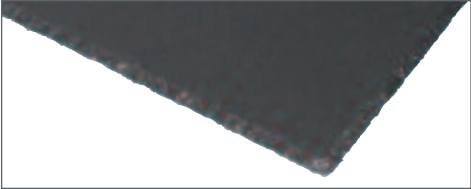
A smooth surface and dressed edges offer a traditional and pleasing look using nail and rivet fixing down to 20°.



## Colour availability



## Edge profile



Technical data		
Size of slate	600mm x 300mm	
Minimum pitch*	Moderate exposure	22.5° (100mm headlap)
		20° (110mm headlap)
	Severe exposure	25° (100mm headlap)
		22.5° (110mm headlap)
Maximum pitch	90°	
Typical headlaps	100, 110mm	
Maximum gauge	245-250mm	
Slate thickness	4mm (nominal)	
Covering capacity (net)	13.4 slates/m² at 100mm headlap	
	13.6 slates/m² at 110mm headlap	
Weight of slating (approx.)	20.4kg/m² (0.20 kN/m²) at 100mm headlap	
	20.9kg/m² (0.20 kN/m²) at 110mm headlap	
Battens required (net)	4.00 lin.m/m² at 100mm headlap	
	4.08 lin.m/m² at 110mm headlap	
Batten size recommended	38 x 25mm for rafters/supports not exceeding 450mm centres (fixed to BS 5534)	
	50 x 25mm for rafters/supports not exceeding 600mm centres (fixed to BS 5534)	
Fixings	Slate nails (30mm x 2.65mm)	
	Copper disc rivets (19mm diameter x 2mm stem)	
Authority	BS EN 492	

\* The minimum recommended pitch and lap may be influenced by special circumstances, please contact the Technical Advisory Service.

## Sustainability

- ✓ A+ rated in the BRE Green Guide (based on generic rating for UK and Ireland produced fibre cement slates Element Ref: 812410008)
- ✓ Low carbon footprint of 13 CO<sub>2</sub>e/m²

## Low pitch Birkdale



Birkdale slates can be used for low pitches down to 15° (with hook fixing). This complements our Birkdale range using nail and rivet fixing for steeper pitches.

### Hook fixing



Watch a quick video on hook fixing at [marleyeternit.co.uk/birkdale](http://marleyeternit.co.uk/birkdale) or scan the QR code shown.



### Technical data

Size of slate	600mm x 300mm	
Minimum pitch*	Moderate exposure	15° (150mm lap, max. 6m rafter length)
	Severe exposure	17.5° (150mm lap, max. 9m rafter length)
Maximum pitch	90°	
Headlap	150mm	
Maximum gauge	225mm	
Slate thickness	4mm (nominal)	
Covering capacity (net)	14.8 slates/m² at 150mm headlap	
Weight of slating (approx.)	22.8kg/m² at 150mm headlap	
Battens required (net)	4.45 lin.m/m² at 150mm headlap	
Batten size recommended	38 x 25mm for rafters/supports not exceeding 450mm centres (fixed to BS 5534) 50 x 25mm for rafters/supports not exceeding 600mm centres (fixed to BS 5534)	
Fixings	Slate hooks (150mm) Slate nails for local areas of roof (30mm x 2.65mm) Copper disc rivets for local areas of roof (19mm diameter x 2mm stem)	
Authority	BS EN 492	

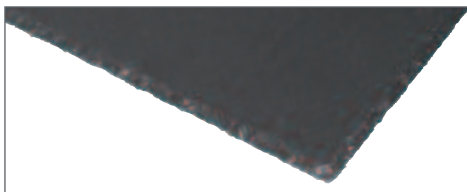
\* The minimum recommended pitch and lap may be influenced by special circumstances, please contact the Technical Advisory Service.

### Colour availability



Blue/Black

### Edge profile



### Sustainability

- ✓ A+ rated in the BRE Green Guide (based on generic rating for UK and Ireland produced fibre cement slates  
Element Ref: 812410008)
- ✓ Low carbon footprint of 13 CO<sub>2</sub>e/m²

New  
colours

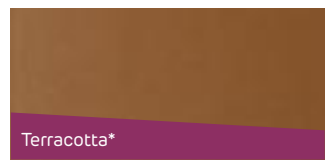
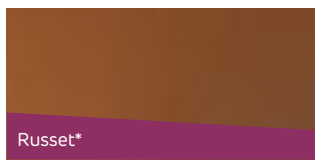
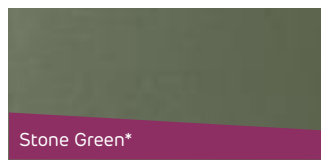
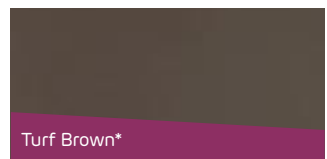
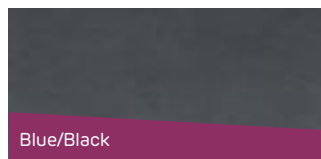
# Thrutone



A smooth surface and square cut edges give a low profile slate at an economical price with a minimum pitch of 15°.



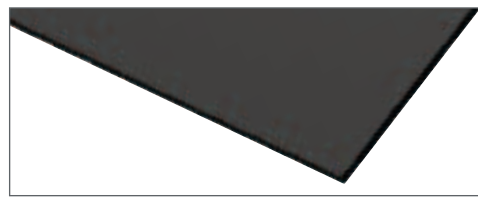
## Colour availability



## Shapes availability



## Edge profile



\* Made to order and subject to a lead time



## Technical data

Size of slate	600mm x 300mm	500mm x 250mm
Minimum pitch*		
Moderate exposure	22.5° (100mm headlap) 20° (110mm headlap)	22.5° (100mm headlap)
Severe exposure	25° (100mm headlap) 22.5° (110mm headlap)	25° (100mm headlap)
4m max. rafter length	15°-17.5° (110mm headlap)	
6m max. rafter length	17.5°-20° (110mm headlap)	
Maximum pitch	90°	90°
Typical headlaps	100, 110mm	100mm
Maximum gauge	245-250mm	200mm
Slate thickness	4mm (nominal)	4mm (nominal)
Covering capacity (net)	13.4 slates/m <sup>2</sup> at 100mm headlap 13.6 slates/m <sup>2</sup> at 110mm headlap	20.0 slates/m <sup>2</sup> at 100mm headlap
Weight of slating (approx.)	20.4kg/m <sup>2</sup> (0.20 kN/m <sup>2</sup> ) at 100mm headlap 20.9kg/m <sup>2</sup> (0.20 kN/m <sup>2</sup> ) at 110mm headlap	21.3 kg/m <sup>2</sup> (0.21 kN/m <sup>2</sup> ) at 100mm headlap
Battens required (net)	4.00 lin.m/m <sup>2</sup> at 100mm headlap 4.08 lin.m/m <sup>2</sup> at 110mm headlap	5.00 lin.m/m <sup>2</sup> at 100mm headlap
Batten size recommended	38 x 25mm for rafters/supports not exceeding 450mm centres (fixed to BS 5534) 50 x 25mm for rafters/supports not exceeding 600mm centres (fixed to BS 5534)	
Fixings	Slate nails (30mm x 2.65mm) Copper disc rivets (19mm diameter x 2mm stem)	Slate nails (30mm x 2.65mm) Copper disc rivets (19mm diameter x 2mm stem)
Authority	BS EN 492	BS EN 492

\* The minimum recommended pitch and lap may be influenced by special circumstances, please contact the Technical Advisory Service.

## Sustainability

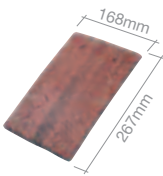
- ✓ A+ rated in the BRE Green Guide (based on generic rating for UK and Ireland produced fibre cement slates  
Element Ref: 812410008)
- ✓ BES 6001 (Responsible Sourcing) certified
- ✓ Low carbon footprint of 13 CO<sub>2</sub>e/m<sup>2</sup>



# Concrete plain tiles

Concrete plain tile, Smooth Brown, Hayden End, Swindon

# Plain



The authentic cross camber design of the Marley Eternit concrete plain tile gives it a look to match its outstanding versatility.

## Colour availability

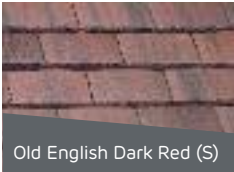
**Key** (F) Fine sanded finish (G) Granular finish (S) Smooth finish



Mosborough Red (S)



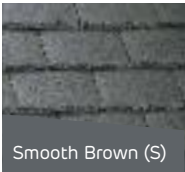
Natural Red (F)



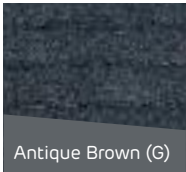
Old English Dark Red (S)



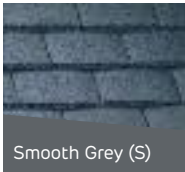
Dark Red (G)



Smooth Brown (S)



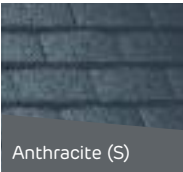
Antique Brown (G)



Smooth Grey (S)



Greystone (G)



Anthracite (S)

## Technical data

Size of tile	267mm x 168mm	
Minimum pitch*	35°	
Maximum pitch	90°	
Minimum headlap	65mm (roof)	37.5mm (vertical)
Maximum gauge	100mm (roof)	115mm (vertical)
Tile thickness	12mm (nominal)	
Cover width	168mm (nominal)	
Covering capacity (net)	60 tiles/m² at 100mm gauge (roof)	53 tiles/m² at 115mm gauge (vertical)
Weight of tiling (approx.)	73.8kg/m² (0.72 kN/m²) at 100mm gauge (roof)	58kg/m² (0.57 kN/m²) at 115mm gauge (vertical)
Battens required (net)	10 lin.m/m² at 100mm gauge (roof)	8.7 lin.m/m² at 115mm gauge (vertical)
Batten size recommended	38 x 25mm for rafters/supports not exceeding 600mm centres (fixed to BS 5534)	
Tile nails	38mm x 2.65mm	
Authority	BS EN 490	

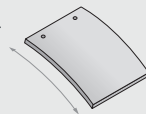
\* The minimum recommended pitch and lap may be influenced by special circumstances, please contact the Technical Advisory Service.

## Sustainability

- ✓ A+ rated in the BRE Green Guide (based on generic rating for UK produced concrete plain tiles  
Element Refs: 812410017, 812410050, 812410064)
- ✓ BES 6001 (Responsible Sourcing) certified
- ✓ Independent carbon footprint certification

## Product information

**Tile camber**  
Single camber



**Compatible with clay feature tiles**

For advice on the use of Feature tiles in main roof areas contact the Technical Advisory Service.

† Made to order



Club†



Bullnose†

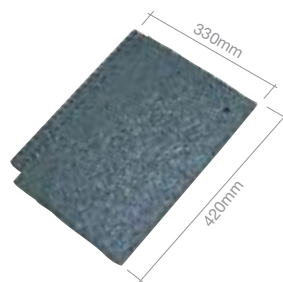


# Concrete interlocking tiles

Duo Modern, Smooth Grey, Pontypool

# Edgemere

A clean and precise slate-like appearance is enhanced by the thin leading edge and the broken-bond laying technique.



## Colour availability

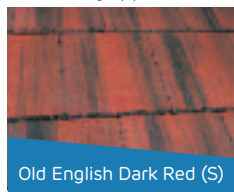
**Key** (S) Smooth finish



Smooth Brown (S)



Smooth Grey (S)



Old English Dark Red (S)

## Technical data

Size of slate	420mm x 330mm
Minimum pitch*	22.5° Smooth (75mm headlap) 17.5° Smooth (100mm headlap)
Maximum pitch	90°
Minimum headlap	75mm (22.5° and above) 100mm (below 22.5°)
Maximum gauge	345mm
Tile thickness	18mm (nominal)
Cover width	298mm (nominal)
Hanging length	395mm (nominal)
Covering capacity (net)	9.7 tiles/m <sup>2</sup> at 75mm headlap 10.5 tiles/m <sup>2</sup> at 100mm headlap
Weight of slating (approx.)	44kg/m <sup>2</sup> (0.43 kN/m <sup>2</sup> ) at 75mm headlap 47.5kg/m <sup>2</sup> (0.47 kN/m <sup>2</sup> ) at 100mm headlap
Battens required (net)	2.9 lin.m/m <sup>2</sup> at 75mm headlap 3.1 lin.m/m <sup>2</sup> at 100mm headlap
Batten size recommended	38 x 25mm for rafters/supports not exceeding 450mm centres (fixed to BS 5534) 50 x 25mm for rafters/supports not exceeding 600mm centres (fixed to BS 5534)
Slate nails	45mm x 3.35mm
Fixing clips	Eaves, verge and slate clips
Authority	BS EN 490

\* The minimum recommended pitch and lap may be influenced by special circumstances, please contact the Technical Advisory Service.

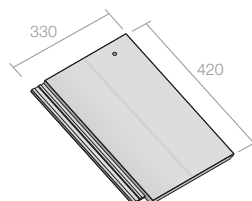
## Sustainability

- ✓ A+ rated in the BRE Green Guide (based on generic rating for UK produced concrete interlocking tiles  
Element Refs: 812410007, 812410018, 812410049)
- ✓ BES 6001 (Responsible Sourcing) certified
- ✓ Independent carbon footprint certification

## Edgemere half tile

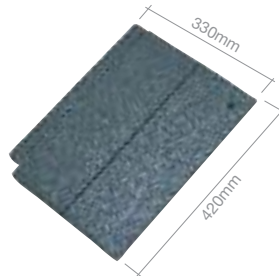
Available in all colours to match main tiles.

Edgemere should be laid broken bond. The required broken bond pattern is created by the introduction of half tiles, to form verges in alternate courses. Half tiles are formed on-site by cutting along the scoreline.



# Duo Edgemere

A thin leading edge interlocking tile designed to look like and blend in with small format slates.



## Colour availability



**Key** (S) Smooth finish

## Technical data

Size of slate	420mm x 330mm
Minimum pitch*	22.5° Smooth (75mm headlap) 17.5° Smooth (100mm headlap)
Maximum pitch	90°
Minimum headlap	75mm (22.5° and above) 100mm (below 22.5°)
Maximum gauge	345mm
Tile thickness	18mm (nominal)
Cover width	298mm (nominal)
Hanging length	395mm (nominal)
Covering capacity (net)	9.7 tiles/m <sup>2</sup> at 75mm headlap 10.5 tiles/m <sup>2</sup> at 100mm headlap
Weight of slating (approx.)	44kg/m <sup>2</sup> (0.43 kN/m <sup>2</sup> ) at 75mm headlap 47.5kg/m <sup>2</sup> (0.47 kN/m <sup>2</sup> ) at 100mm headlap
Battens required (net)	2.9 lin.m/m <sup>2</sup> at 75mm headlap 3.1 lin.m/m <sup>2</sup> at 100mm headlap
Batten size recommended	38 x 25mm for rafters/supports not exceeding 450mm centres (fixed to BS 5534) 50 x 25mm for rafters/supports not exceeding 600mm centres (fixed to BS 5534)
Slate nails	45mm x 3.35mm
Fixing clips	Eaves, verge and slate clips
Authority	BS EN 490

\* The minimum recommended pitch and lap may be influenced by special circumstances, please contact the Technical Advisory Service.

## Sustainability

- ✓ A+ rated in the BRE Green Guide (based on generic rating for UK produced concrete interlocking tiles  
Element Refs: 812410007, 812410018, 812410049)
- ✓ BES 6001 (Responsible Sourcing) certified
- ✓ Independent carbon footprint certification

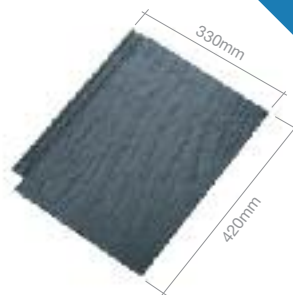
## Duo Edgemere fittings

Duo Edgemere should be laid broken bond. The required broken bond pattern is created by the introduction of three-quarter width tiles, cut from standard tiles on site to form verges in alternate courses.



# Riven Edgemere

A thin leading edge interlocking tile with the addition of a riven surface, providing a more natural appearance with variegated look, depth and tone.



## Colour availability

**Key** (S) Smooth finish



Smooth Grey (S)

## Technical data

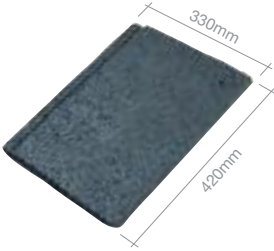
Size of slate	420mm x 330mm
Minimum pitch*	22.5° Smooth (75mm headlap) 17.5° Smooth (100mm headlap)
Maximum pitch	90°
Minimum headlap	75mm (22.5° and above) 100mm (below 22.5°)
Maximum gauge	345mm
Tile thickness	18mm (nominal)
Cover width	298mm (nominal)
Hanging length	395mm (nominal)
Covering capacity (net)	9.7 tiles/m <sup>2</sup> at 75mm headlap 10.5 tiles/m <sup>2</sup> at 100mm headlap
Weight of slating (approx.)	44kg/m <sup>2</sup> (0.43 kN/m <sup>2</sup> ) at 75mm headlap 47.5kg/m <sup>2</sup> (0.47 kN/m <sup>2</sup> ) at 100mm headlap
Battens required (net)	2.9 lin.m/m <sup>2</sup> at 75mm headlap 3.1 lin.m/m <sup>2</sup> at 100mm headlap
Batten size recommended	38 x 25mm for rafters/supports not exceeding 450mm centres (fixed to BS 5534) 50 x 25mm for rafters/supports not exceeding 600mm centres (fixed to BS 5534)
Slate nails	45mm x 3.35mm
Fixing clips	Eaves, verge and slate clips
Authority	BS EN 490

\* The minimum recommended pitch and lap may be influenced by special circumstances, please contact the Technical Advisory Service.

## Sustainability

- ✓ A+ rated in the BRE Green Guide (based on generic rating for UK produced concrete interlocking tiles  
Element Refs: 812410007, 812410018, 812410049)
- ✓ BES 6001 (Responsible Sourcing) certified
- ✓ Independent carbon footprint certification

# Modern



A flat, smooth, single-lap interlocking design, whose appearance is enhanced by the required broken bond laying pattern.

## Colour availability

**Key** (G) Granular finish (S) Smooth finish † Only available without nail holes



Anthracite (S)



Smooth Grey (S)



Antique Brown† (G)



Smooth Brown (S)



Old English Dark Red (S)



Mosborough Red (S)

## Technical data

Size of slate	420mm x 330mm	
Minimum pitch*	22.5° Smooth (75mm headlap) 17.5° Smooth (100mm headlap)	30° Granular (75mm headlap) 25° Granular (100mm headlap)
Maximum pitch	90°	
Minimum headlap	75mm	
Maximum gauge	345mm	
Tile thickness	30mm (nominal)	
Cover width	292mm (nominal)	
Hanging length	397mm (nominal)	
Covering capacity (net)	9.9 tiles/m <sup>2</sup> at 75mm headlap	10.7 tiles/m <sup>2</sup> at 100mm headlap
Weight of slating (approx.)	50kg/m <sup>2</sup> (0.49 kN/m <sup>2</sup> ) at 75mm headlap	54kg/m <sup>2</sup> (0.53 kN/m <sup>2</sup> ) at 100mm headlap
Battens required (net)	2.9 lin.m/m <sup>2</sup> at 75mm headlap	3.1 lin.m/m <sup>2</sup> at 100mm headlap
Batten size recommended	38 x 25mm for rafters/supports not exceeding 450mm centres (fixed to BS 5534) 50 x 25mm for rafters/supports not exceeding 600mm centres (fixed to BS 5534)	
Tile nails	50mm x 3.35mm	
Fixing clips	Eaves, verge and tile clips	
Authority	BS EN 490	

\* The minimum recommended pitch and lap may be influenced by special circumstances, please contact the Technical Advisory Service.

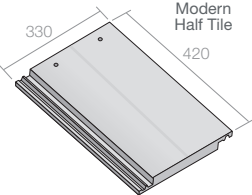
## Sustainability

- ✓ A+ rated in the BRE Green Guide (based on generic rating for UK produced concrete interlocking tiles  
Element Refs: 812410007, 812410018, 812410049)
- ✓ BES 6001 (Responsible Sourcing) certified
- ✓ Independent carbon footprint certification

## Modern fittings

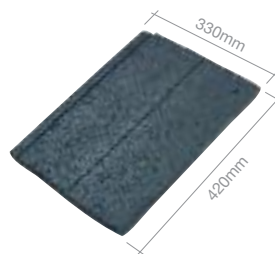
Available in all colours to match main tiles.

Modern should be laid broken bond. The required broken bond pattern is created by the introduction of half tiles, to form verges in alternate courses. Half tiles are formed on-site by cutting along the scoreline.



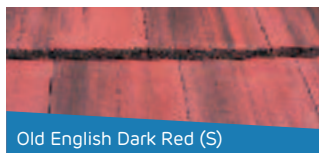
# Duo Modern

A flat, smooth, single lap, interlocking tile with a 'mock bond' joint is enhanced by the required broken-bond laying technique.

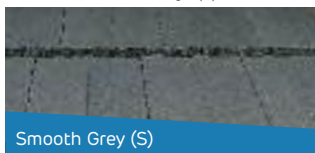


## Colour availability

Key (S) Smooth finish



Old English Dark Red (S)



Smooth Grey (S)

## Technical data

Size of slate	420mm x 330mm	
Minimum pitch*	22.5° Smooth (75mm headlap) 17.5° Smooth (100mm headlap)	
Maximum pitch	90°	
Minimum headlap	75mm	
Maximum gauge	345mm	
Tile thickness	30mm (nominal)	
Cover width	292mm (nominal)	
Hanging length	397mm (nominal)	
Covering capacity (net)	9.9 tiles/m <sup>2</sup> at 75mm headlap	10.7 tiles/m <sup>2</sup> at 100mm headlap
Weight of slating (approx.)	50kg/m <sup>2</sup> (0.49 kN/m <sup>2</sup> ) at 75mm headlap	54kg/m <sup>2</sup> (0.53 kN/m <sup>2</sup> ) at 100mm headlap
Battens required (net)	2.9 lin.m/m <sup>2</sup> at 75mm headlap	3.1 lin.m/m <sup>2</sup> at 100mm headlap
Batten size recommended	38 x 25mm for rafters/supports not exceeding 450mm centres (fixed to BS 5534) 50 x 25mm for rafters/supports not exceeding 600mm centres (fixed to BS 5534)	
Tile nails	50mm x 3.35mm	
Fixing clips	Eaves, verge and tile clips	
Authority	BS EN 490	

\* The minimum recommended pitch and lap may be influenced by special circumstances, please contact the Technical Advisory Service.

## Sustainability

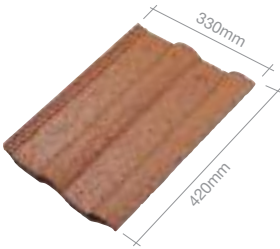
- ✓ A+ rated in the BRE Green Guide (based on generic rating for UK produced concrete interlocking tiles  
Element Refs: 812410007, 812410018, 812410049)
- ✓ BES 6001 (Responsible Sourcing) certified
- ✓ Independent carbon footprint certification

## Duo Modern fittings

Duo Modern should be laid broken bond. The required broken bond pattern is created by the introduction of three-quarter width tiles, cut from standard tiles on site to form verges in alternate courses.

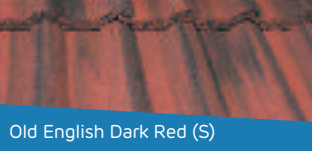
# Double Roman

A 2000 year old profile with precision-engineered functionality.



## Colour availability

Key (G) Granular finish (S) Smooth finish



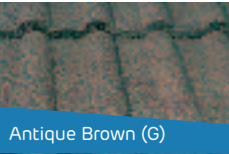
Old English Dark Red (S)



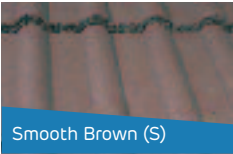
Mosborough Red (S)



Dark Red (G)



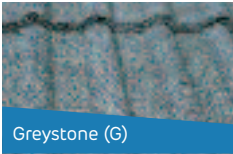
Antique Brown (G)



Smooth Brown (S)



Smooth Grey (S)



Greystone (G)

## Technical data

Size of slate	420mm x 330mm	
Minimum pitch*	25° Smooth (75mm headlap) 22.5° Smooth (100mm headlap)	30° Granular (75mm headlap)
Maximum pitch	90°	
Minimum headlap	75mm	
Maximum gauge	345mm	
Body thickness	28mm (nominal)	
Profile depth	d > 20mm	
Overall depth	53mm	
Cover width	300mm (nominal)	
Hanging length	397mm (nominal)	
Covering capacity (net)	9.7 tiles/m <sup>2</sup> at 75mm headlap	10.4 tiles/m <sup>2</sup> at 100mm headlap
Weight of tiling (approx.)	44kg/m <sup>2</sup> (0.43 kN/m <sup>2</sup> ) at 75mm headlap	47kg/m <sup>2</sup> (0.46 kN/m <sup>2</sup> ) at 100mm headlap
Battens required (net)	2.9 lin.m/m <sup>2</sup> at 75mm headlap	3.1 lin.m/m <sup>2</sup> at 100mm headlap
Batten size recommended	38 x 25mm for rafters/supports not exceeding 450mm centres (fixed to BS 5534) 50 x 25mm for rafters/supports not exceeding 600mm centres (fixed to BS 5534)	
Tile nails	65mm x 3.35mm	
Fixing clips	Eaves, verge and tile clips	
Authority	BS EN 490	

\* The minimum recommended pitch and lap may be influenced by special circumstances, please contact the Technical Advisory Service.

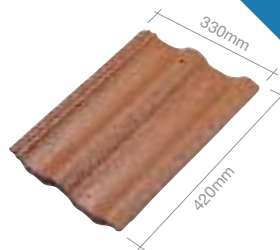
## Sustainability

- ✓ A<sup>+</sup> rated in the BRE Green Guide (based on generic rating for UK produced concrete interlocking tiles  
Element Refs: 812410007, 812410018, 812410049)
- ✓ BES 6001 (Responsible Sourcing) certified
- ✓ Independent carbon footprint certification

# Mendip



A double pantile design with elegant flowing lines, providing instant visual appeal.



Low pitch

## Colour availability

Key (G) Granular finish (S) Smooth finish



Old English Dark Red (S)



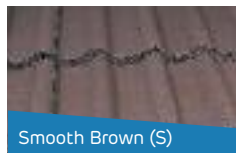
Mosborough Red (S)



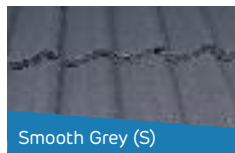
Dark Red (G)



Antique Brown (G)



Smooth Brown (S)



Smooth Grey (S)



Anthracite (S)

## Technical data

Size of slate	420mm x 330mm	
Minimum pitch*	17.5° Smooth (75mm headlap) 15° Smooth (100mm headlap)	30° Granular (75mm headlap) 25° Granular (100mm headlap)
Maximum pitch	90°	
Minimum headlap	75mm	
Maximum gauge	345mm	
Body thickness	27mm (nominal)	
Profile depth	d > 20mm	
Overall depth	59mm	
Cover width	298mm (nominal)	
Hanging length	397mm (nominal)	
Covering capacity (net)	9.7 tiles/m <sup>2</sup> at 75mm headlap	10.5 tiles/m <sup>2</sup> at 100mm headlap
Weight of tiling (approx.)	46kg/m <sup>2</sup> (0.45 kN/m <sup>2</sup> ) at 75mm headlap	49kg/m <sup>2</sup> (0.48 kN/m <sup>2</sup> ) at 100mm headlap
Battens required (net)	2.9 lin.m/m <sup>2</sup> at 75mm headlap	3.1 lin.m/m <sup>2</sup> at 100mm headlap
Batten size recommended	38 x 25mm for rafters/supports not exceeding 450mm centres (fixed to BS 5534) 50 x 25mm for rafters/supports not exceeding 600mm centres (fixed to BS 5534)	
Tile nails	70mm x 3.35mm	
Fixing clips	Eaves, verge and tile clips	
Authority	BS EN 490	

\* The minimum recommended pitch and lap may be influenced by special circumstances, please contact the Technical Advisory Service.

## Sustainability

- ✓ A<sup>+</sup> rated in the BRE Green Guide (based on generic rating for UK produced concrete interlocking tiles  
Element Refs: 812410007, 812410018, 812410049)
- ✓ BES 6001 (Responsible Sourcing) certified
- ✓ Independent carbon footprint certification

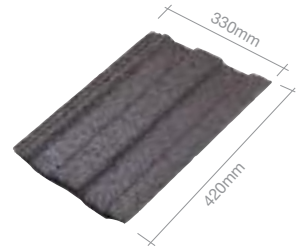
## Extended rafter lengths

Mendip interlocking tiles can now perform at extended rafter lengths as follows:

- 15 - 17.5° pitch with a rafter length up to and including 15m will require a 100mm headlap.
- 17.5° pitch and above with a rafter length up to and including 15m will require a 75mm headlap.

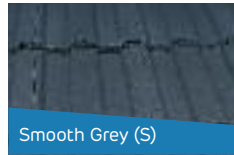
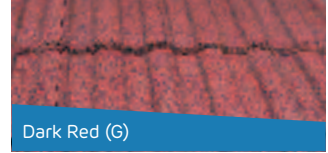
# Ludlow Major

Simple, strong lines exploit the interplay between light and shade.



## Colour availability

**Key** (G) Granular finish (S) Smooth finish



## Technical data

Size of slate	420mm x 330mm	
Minimum pitch*	25° Smooth (75mm headlap) 22.5° Smooth (100mm headlap)	30° Granular (75mm headlap)
Maximum pitch	90°	
Minimum headlap	75mm	
Maximum gauge	345mm	
Body thickness	25mm (nominal)	
Profile depth	d > 11mm	
Cover width	295mm (nominal)	
Hanging length	399mm (nominal)	
Covering capacity (net)	9.8 tiles/m <sup>2</sup> at 75mm headlap	10.6 tiles/m <sup>2</sup> at 100mm headlap
Weight of tiling (approx.)	45kg/m <sup>2</sup> (0.44 kN/m <sup>2</sup> ) at 75mm headlap	49kg/m <sup>2</sup> (0.48 kN/m <sup>2</sup> ) at 100mm headlap
Battens required (net)	2.9 lin.m/m <sup>2</sup> at 75mm headlap	3.1 lin.m/m <sup>2</sup> at 100mm headlap
Batten size recommended	38 x 25mm for rafters/supports not exceeding 450mm centres (fixed to BS 5534) 50 x 25mm for rafters/supports not exceeding 600mm centres (fixed to BS 5534)	
Tile nails	55mm x 3.35mm	
Fixing clips	Eaves, verge and tile clips	
Authority	BS EN 490	

\* The minimum recommended pitch and lap may be influenced by special circumstances, please contact the Technical Advisory Service.

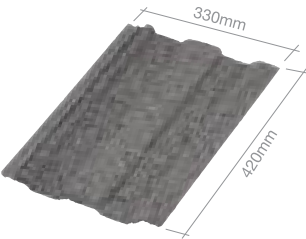
## Sustainability

- ✓ A+ rated in the BRE Green Guide (based on generic rating for UK produced concrete interlocking tiles  
Element Refs: 812410007, 812410018, 812410049)
- ✓ BES 6001 (Responsible Sourcing) certified
- ✓ Independent carbon footprint certification



# EcoLogic Ludlow Major

This unique EcoLogic coating applied to the Ludlow Major tile, removes nitrogen oxides and other pollutants from the atmosphere. The tile also includes much higher levels of recycled content.

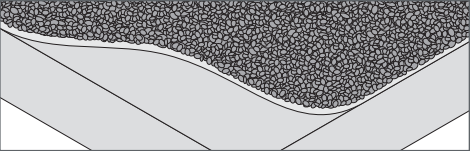




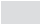
## Colour availability



**Key** (G) Granular finish

## EcoLogic composition



-  Photocatalytic granules stimulated by sunlight to remove NOx
-  Photocatalytic pigmented slurry adhesive
-  Concrete body containing nearly 50% recycled material

## Technical data

Size of slate	420mm x 330mm	
Minimum pitch*	30° Granular (75mm headlap)	
Maximum pitch	90°	
Minimum headlap	75mm	
Maximum gauge	345mm	
Body thickness	25mm (nominal)	
Profile depth	d > 11mm	
Cover width	295mm (nominal)	
Hanging length	399mm (nominal)	
Covering capacity (net)	9.8 tiles/m <sup>2</sup> at 75mm headlap	10.6 tiles/m <sup>2</sup> at 100mm headlap
Weight of tiling (approx.)	45kg/m <sup>2</sup> (0.44 kN/m <sup>2</sup> ) at 75mm headlap	49kg/m <sup>2</sup> (0.48 kN/m <sup>2</sup> ) at 100mm headlap
Battens required (net)	2.9 lin.m/m <sup>2</sup> at 75mm headlap	3.1 lin.m/m <sup>2</sup> at 100mm headlap
Batten size recommended	38 x 25mm for rafters/supports not exceeding 450mm centres (fixed to BS 5534) 50 x 25mm for rafters/supports not exceeding 600mm centres (fixed to BS 5534)	
Tile nails	55mm x 3.35mm	
Fixing clips	Eaves, verge and tile clips	
Authority	BS EN 490	

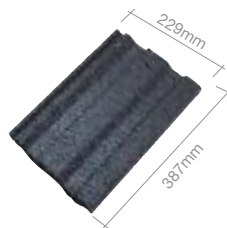
\* The minimum recommended pitch and lap may be influenced by special circumstances, please contact the Technical Advisory Service.

## Sustainability

- ✓ A+ rated in the BRE Green Guide (based on generic rating for UK produced concrete interlocking tiles  
Element Refs: 812410007, 812410018, 812410049)
- ✓ BES 6001 (Responsible Sourcing) certified
- ✓ Independent carbon footprint certification
- ✓ High level of recycled content

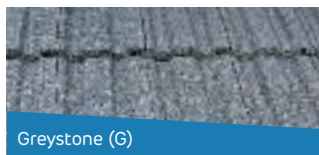
# Ludlow Plus

Ideal for refurbishment applications, where its smaller format reduces wastage.

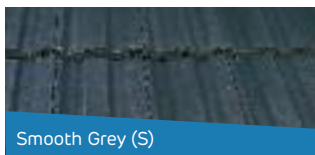


## Colour availability

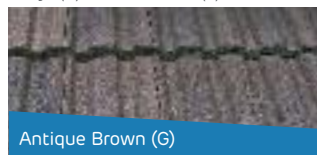
**Key** (G) Granular finish (S) Smooth finish



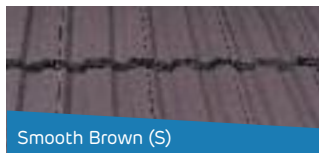
Greystone (G)



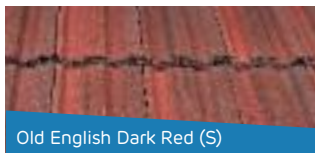
Smooth Grey (S)



Antique Brown (G)



Smooth Brown (S)



Old English Dark Red (S)



Dark Red (G)

## Technical data

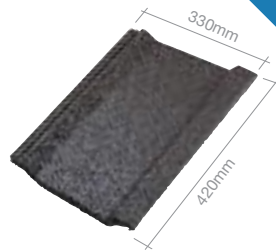
Size of slate	387mm x 229mm	
Minimum pitch*	25° Smooth (75mm headlap) 22.5° Smooth (100mm headlap)	30° Granular (75mm headlap)
Maximum pitch	90°	
Minimum headlap	75mm	
Maximum gauge	312mm	
Body thickness	25mm (nominal)	
Profile depth	d > 11mm	
Cover width	204mm (nominal)	
Hanging length	361mm (nominal)	
Covering capacity (net)	15.7 tiles/m <sup>2</sup> at 75mm headlap 17.1 tiles/m <sup>2</sup> at 100mm headlap	
Weight of tiling (approx.)	47kg/m <sup>2</sup> (0.46 kN/m <sup>2</sup> ) at 75mm headlap 51kg/m <sup>2</sup> (0.50 kN/m <sup>2</sup> ) at 100mm headlap	
Battens required (net)	3.2 lin.m/m <sup>2</sup> at 75mm headlap 3.5 lin.m/m <sup>2</sup> at 100mm headlap	
Batten size recommended	38 x 25mm for rafters/supports not exceeding 450mm centres (fixed to BS 5534) 50 x 25mm for rafters/supports not exceeding 600mm centres (fixed to BS 5534)	
Tile nails	50mm x 3.35mm	
Fixing clips	Eaves, verge and tile clips	
Authority	BS EN 490	

\* The minimum recommended pitch and lap may be influenced by special circumstances, please contact the Technical Advisory Service.

## Sustainability

- ✓ A<sup>+</sup> rated in the BRE Green Guide (based on generic rating for UK produced concrete interlocking tiles  
Element Refs: 812410007, 812410018, 812410049)
- ✓ BES 6001 (Responsible Sourcing) certified
- ✓ Independent carbon footprint certification

Designed to shed water efficiently at pitches down to 15°, the Wessex has clean, simple lines with a pleasing minimalist style.



## Colour availability

**Key** (S) Smooth finish



### Technical data

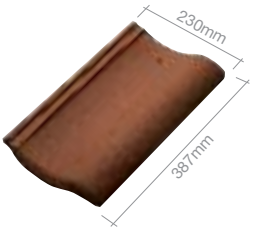
Size of slate	420mm x 330mm
Minimum pitch*	15° Smooth
Maximum pitch	44°
Minimum headlap	75mm
Maximum gauge	345mm
Body thickness	29mm (nominal)
Profile depth	d > 20mm
Overall depth	56mm
Cover width	298mm (nominal)
Hanging length	403mm (nominal)
Covering capacity (net)	9.7 tiles/m <sup>2</sup> at 75mm headlap 10.5 tiles/m <sup>2</sup> at 100mm headlap
Weight of tiling (approx.)	50kg/m <sup>2</sup> (0.49 kN/m <sup>2</sup> ) at 75mm headlap 53kg/m <sup>2</sup> (0.52 kN/m <sup>2</sup> ) at 100mm headlap
Battens required (net)	2.9 lin.m/m <sup>2</sup> at 75mm headlap 3.1 lin.m/m <sup>2</sup> at 100mm headlap
Batten size recommended	38 x 25mm for rafters/supports not exceeding 450mm centres (fixed to BS 5534) 50 x 25mm for rafters/supports not exceeding 600mm centres (fixed to BS 5534)
Tile nails	45mm x 3.35mm
Fixing clips	Eaves, verge and tile clips
Authority	BS EN 490

\* The minimum recommended pitch and lap may be influenced by special circumstances, please contact the Technical Advisory Service.

### Sustainability

- ✓ A+ rated in the BRE Green Guide (based on generic rating for UK produced concrete interlocking tiles  
Element Refs: 812410007, 812410018, 812410049)
- ✓ BES 6001 (Responsible Sourcing) certified
- ✓ Independent carbon footprint certification

# Anglia



A single-lap interlocking concrete tile with the classic clay pantile profile and a bullnosed leading edge design.

## Colour availability



Old English Dark Red (S)



Smooth Grey (S)



Antique Brown (G)

**Key** (G) Granular finish (S) Smooth finish

## Technical data

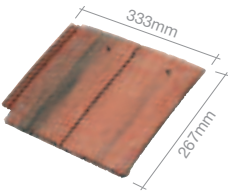
Size of slate	387mm x 230mm	
Minimum pitch*	30° Smooth (75mm headlap) 25° Smooth (100mm headlap)	30° Granular (75mm headlap)
Maximum pitch	90°	
Minimum headlap	75mm	
Maximum gauge	312mm	
Body thickness	30mm (nominal)	
Profile depth	d > 20mm	
Overall depth	71mm	
Cover width	204mm (nominal)	
Hanging length	370mm (nominal)	
Covering capacity (net)	15.7 tiles/m <sup>2</sup> at 75mm headlap 17.1 tiles/m <sup>2</sup> at 100mm headlap	
Weight of tiling (approx.)	47kg/m <sup>2</sup> (0.46 kN/m <sup>2</sup> ) at 75mm headlap 51kg/m <sup>2</sup> (0.50 kN/m <sup>2</sup> ) at 100mm headlap	
Battens required (net)	3.2 lin.m/m <sup>2</sup> at 75mm headlap 3.5 lin.m/m <sup>2</sup> at 100mm headlap	
Batten size recommended	38 x 25mm for rafters/supports not exceeding 450mm centres (fixed to BS 5534) 50 x 25mm for rafters/supports not exceeding 600mm centres (fixed to BS 5534)	
Tile nails	38mm x 3.35mm	
Fixing clips	Eaves, verge and tile clips	
Authority	BS EN 490	

\* The minimum recommended pitch and lap may be influenced by special circumstances, please contact the Technical Advisory Service.

## Sustainability

- ✓ A+ rated in the BRE Green Guide (based on generic rating for UK produced concrete interlocking tiles  
Element Refs: 812410007, 812410018, 812410049)
- ✓ BES 6001 (Responsible Sourcing) certified
- ✓ Independent carbon footprint certification

# Ashmore



A single lap, interlocking double plain tile, with the engineered precision and ease of installation of an interlocking tile.

## Colour availability

Key (S) Smooth finish



Old English Dark Red (S)



Smooth Grey (S)



Smooth Brown (S)

Technical data		
Size of slate	267mm x 333mm	
Minimum pitch*	25° (77mm headlap)	22.5° (92mm headlap)
Maximum pitch	90°	
Minimum headlap	77mm	
Maximum gauge	190mm	
Tile thickness	16mm (nominal)	
Cover width	302mm (nominal)	
Hanging length	235mm (nominal)	
Covering capacity (net)	17.5 tiles/m <sup>2</sup> at 77mm headlap	19 tiles/m <sup>2</sup> at 92mm headlap
Weight of tiling (approx.)	48kg/m <sup>2</sup> (0.47 kN/m <sup>2</sup> ) at 77mm headlap	52kg/m <sup>2</sup> (0.51 kN/m <sup>2</sup> ) at 92mm headlap
Battens required (net)	5.3 lin.m/m <sup>2</sup> at 77mm headlap	5.8 lin.m/m <sup>2</sup> at 92mm headlap
Batten size recommended	38 x 25mm for rafters/supports not exceeding 450mm centres (fixed to BS 5534) 50 x 25mm for rafters/supports not exceeding 600mm centres (fixed to BS 5534)	
Tile nails	45mm x 3.35mm	
Fixing clips	Eaves, verge and tile clips	
Authority	BS EN 490	

\* The minimum recommended pitch and lap may be influenced by special circumstances, please contact the Technical Advisory Service.

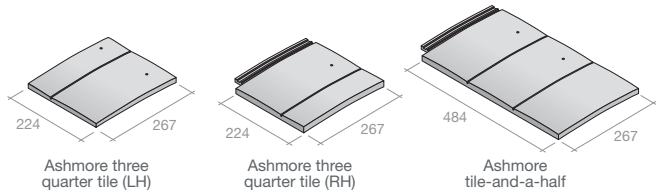
## Sustainability

- ✓ A+ rated in the BRE Green Guide (based on generic rating for UK produced concrete interlocking tiles Element Refs: 812410007, 812410018, 812410049)
- ✓ BES 6001 (Responsible Sourcing) certified
- ✓ Independent carbon footprint certification

## Ashmore fittings

Available in all colours to match main tiles.

Ashmore tiles should be laid broken bond. The required broken bond pattern is created by the introduction of three-quarter width tiles in alternate courses. Tile-and-a-half tiles are available for use at hips and valleys.





# Fittings and accessories

Concrete third round hip tiles (with Ashmore Old English Dark Red), Windsor



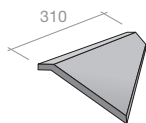
# Clay fittings and accessories

## Clay ridges, hips and valleys

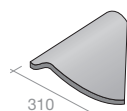
Available in a range of colours and angles. Recommended roof pitch may vary depending on product and system used. For details of the full range of hips and valleys, please contact the Technical Advisory Service.

**Important note: All of the fittings shown on this page can be used with all Clay Plain Tiles, but should not be used on a rafter pitch below 35° with Acme double camber and Ashdowne clay plain tiles.**

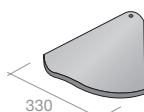
- 1 Made to order (subject to minimum order quantities)
- 2 Some colours and angles made to order (subject to minimum order quantities)
- 3 Staffordshire Blue available to order
- † Angle ridge wing length will vary depending on ridge angle



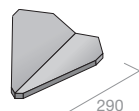
**Arris hip<sup>2</sup>**  
30-45° pitch  
130°, 135°, 145° angles



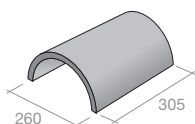
**Granny bonnet hip**  
40-60° pitch



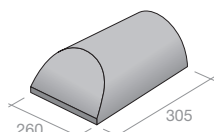
**Semi-bonnet hip**  
30-40° pitch



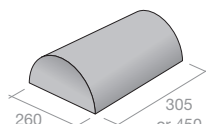
**Valley<sup>2</sup>**  
30-50° pitch  
130-150° angles



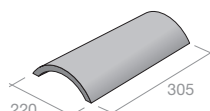
**Half round ridge**  
30-50° pitch



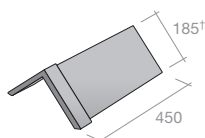
**Half round ridge hip end<sup>1</sup>**  
30-50° pitch



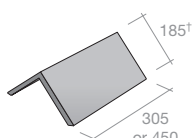
**Half round ridge stop end<sup>1</sup>**  
30-50° pitch



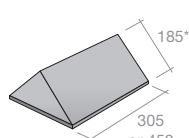
**Third round hip<sup>2</sup>**  
30-45° pitch



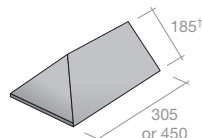
**450mm capped angular ridge<sup>3</sup>**  
75°-135° angles bedded  
(Red Smooth and  
Slate Black only)



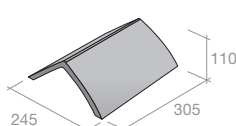
**Angular ridge**  
305mm 90-105°  
(All colours)<sup>2</sup>  
450mm 75-135°  
(Red Smooth and Slate Black)



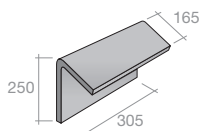
**Angular ridge stop end<sup>1</sup>**  
75-135° angles



**Angular ridge hip end<sup>1</sup>**  
75-135° angles



**Hogs back ridge<sup>2</sup>**  
30°-45° pitch

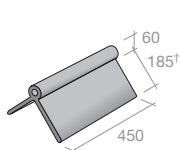


**Mono ridge<sup>1</sup>**  
30-45° pitch

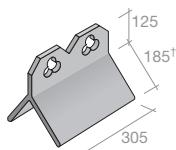
# Clay fittings and accessories

## Clay crested ridges

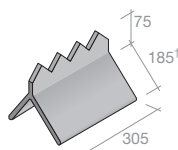
Available in a range of colours and angles. Recommended roof pitch may vary depending on product and system used. For details of the full range of hips and valleys, please contact the Technical Advisory Service.



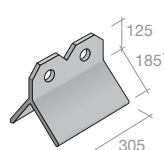
**Plain roll top<sup>2</sup>**  
75-135° angles  
(Red Smooth and Slate Black)



**Club crested ridge**  
90° and 105° angles  
(Red Smooth)



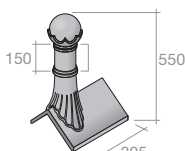
**Cocks comb crested ridge**  
90° and 105° angles  
(Red Smooth)



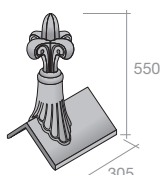
**Two hole crested ridge**  
90° and 105° angles  
(Red Smooth)

## Clay finials

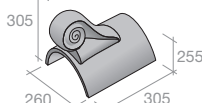
Available in a range of colours and angles. Recommended roof pitch may vary depending on product and system used, please contact the Technical Advisory Service.



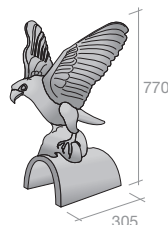
**Ball top finial<sup>1</sup>**  
Half round and  
plain angle bases  
available



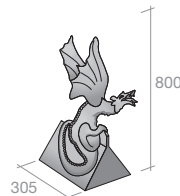
**Fleur-de-Lys gable<sup>1</sup>**  
Half round and  
plain angle bases  
available



**Scroll finial<sup>1</sup>**  
Half round and  
plain angle bases  
available



**Falcon finial<sup>1</sup>**  
Half round and  
plain angle bases  
available in 75°, 90°  
and 105° only



**Dragon finial<sup>1</sup>**  
75° and 90°  
Plain angle  
bases only

**Important note: All of the fittings shown on this page can be used with all Clay Plain Tiles, but should not be used on a rafter pitch below 35° with Acme double camber and Ashdowne clay plain tiles.**

<sup>1</sup> Made to order (subject to minimum order quantities)

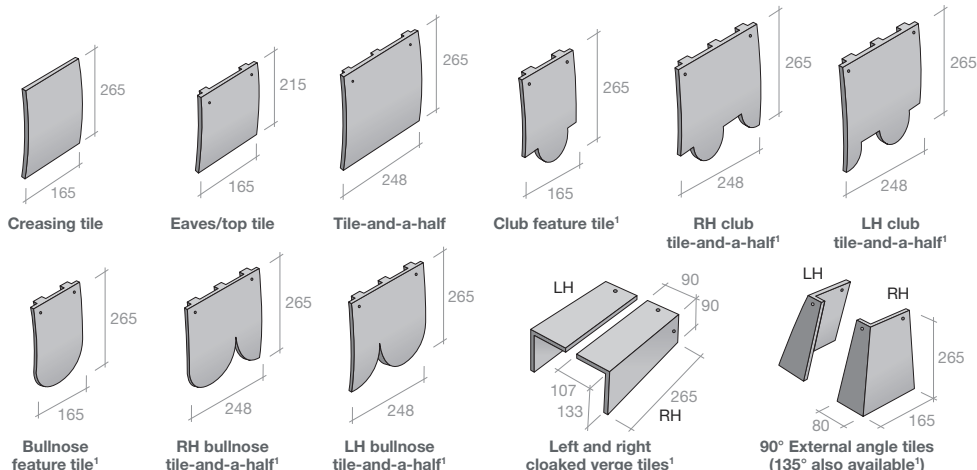
<sup>2</sup> Some colours and angles made to order (subject to minimum order quantities)

† Angle ridge wing length will vary depending on ridge angle

## Clay plain tile fittings

Available in a range of colours.

<sup>1</sup> Made to order (subject to minimum order quantities)

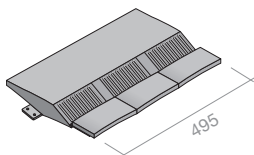


The following dry fix and/or ventilation systems can also be used with clay plain tiles (see page 47):

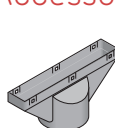
- > Universal 10mm eaves vent system
- > Universal 25mm eaves vent system
- > Universal plain tile vent
- > Universal RidgeFast system (subject to ridge/hip angle)
- > Universal HipFast system (subject to ridge/hip angle)

## Clay in-line tile vent

Available in a range of bases with real clay tile slips on the visible edge (3 tiles wide). The clay tile vent provides a net ventilation area of 7,500mm<sup>2</sup> per vent. Suitable for natural, mechanical or soil pipe ventilation.



## Accessories



Tile vent adaptor

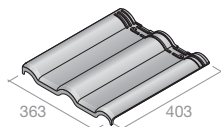


Flexible pipe

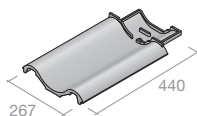
# Clay interlocking fittings and accessories

## Clay interlocking tile fittings

Available in Natural Red.



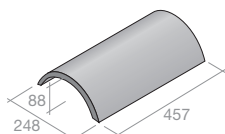
**Maxima left hand  
verge tile (double roll)**



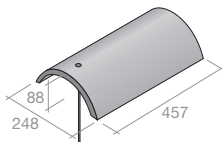
**Melodie left hand  
verge tile (double roll)**

## Concrete ridges and hips for use with clay interlocking tiles

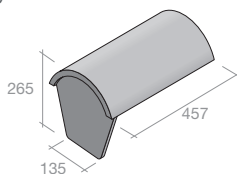
Available in Mosborough Red. Recommended roof pitch may vary depending on product and system used, please contact the Technical Advisory Service.



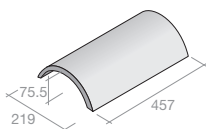
**Segmental ridge**



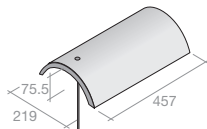
**Segmental security ridge**



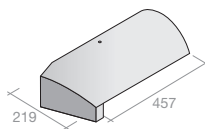
**Segmental block end ridge**



**Third round hip**



**Third round security hip**



**Third round stop end hip**

**The following Universal products and accessories can be used with concrete segmental ridges, third round hip tiles and for use with Maxima and Melodie interlocking clay tiles.**

- > Universal 10mm eaves vent system
- > Universal 25mm eaves vent system
- > Universal HipFast system
- > Universal GRP dry valley
- > Universal tile vent (Maxima only)
- > Mortar bedded security ridge
- > Mortar bedded security hip

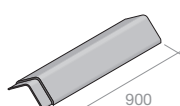
# Fibre cement and concrete plain tile fittings

## Fibre cement fittings

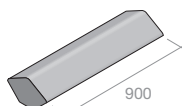
Increments are in 5° where ranges of angle are indicated. Available in Blue/Black. Recommended roof pitch may vary depending on product and system used, please contact the Technical Advisory Service. **See page 47 for Universal accessories, which are compatible with fibre cement slates.**

† 6m ventilated Ridge Roll is available to provide continuous ventilation.

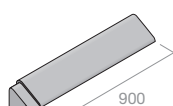
Also available: In-line ridge ventilator stepped adaptor, Flexible pipe.



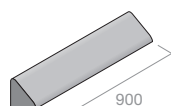
**Duo pitch ridge\***  
(15° to 60°)



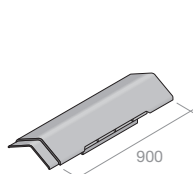
**Stop end for duo pitch ridge\***  
(15° to 60°)



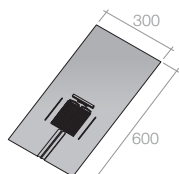
**Monopitch ridge\***  
(15° to 45°)



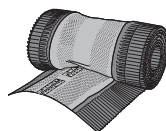
**Stop end for monopitch ridge\***  
(15° to 45°)



**In-line ridge ventilator  
plus extension sleeve**  
(20° to 45°)



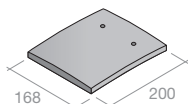
**In-line slate ventilator**



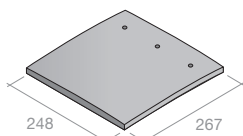
**Fibre cement ridge roll**

## Concrete plain tile fittings

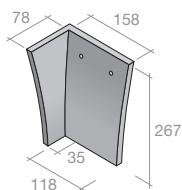
Available in all colours to match main tiles.



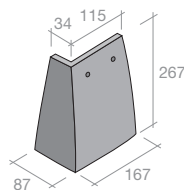
**Plain eaves/top tile**



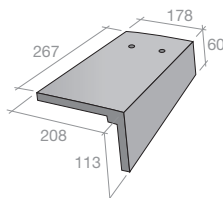
**Plain tile-and-a-half**



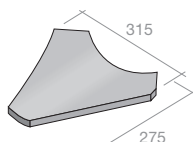
**Internal angle**  
Left and right hand available



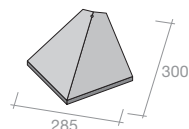
**External angle**  
Left and right hand available



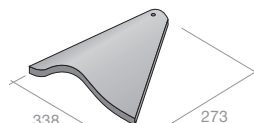
**Cloak verge tile**  
Left and right hand available



**Valley tile**  
35-50°



**Arris hip**  
35-40°



**Bonnet hip**  
35-50°

# Concrete fittings

## Verges, ridges and hips

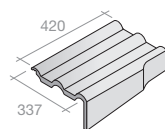
Available in a range of colours to match main tiles.  
Recommended roof pitch may vary depending on product and system used, please contact the Technical Advisory Service.

† Compatible with Marley Eternit ventilated dry ridge system.

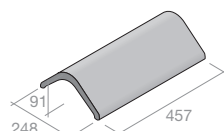
‡ Compatible with Marley Eternit dry hip system.

§ Compatible with Marley Eternit Universal HipFast.

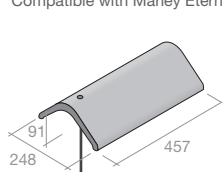
\* Compatible with Marley Eternit Universal RidgeFast.



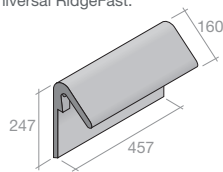
**Cloak verge**  
Modern, Mendip and  
Double Roman (see page 51)



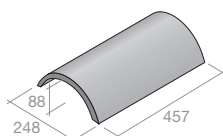
**Modern ridge†‡**  
15-55° dry ridge



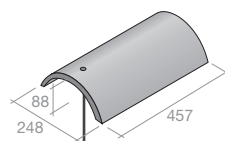
**Modern security ridge**  
15-45° bedded



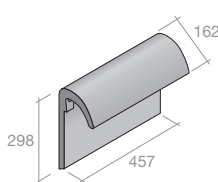
**Modern mono ridge**  
15-45° bedded



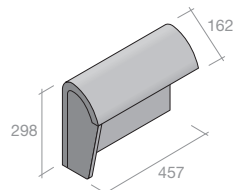
**Segmental ridge†\***  
15-55° dry ridge



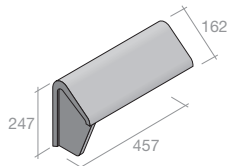
**Segmental security ridge**  
15-50° bedded



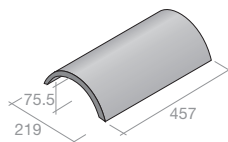
**Segmental mono ridge†**  
15-55° dry ridge



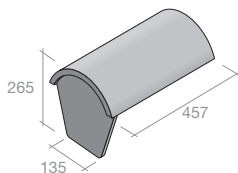
**Segmental mono  
block end ridge**  
15-55° dry ridge



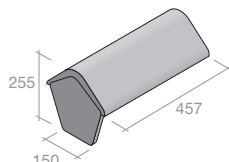
**Modern mono  
block end ridge**  
15-45° bedded



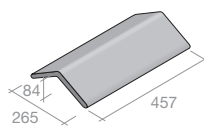
**1/3 round hip tile§**  
17.5-45° dry ridge



**Segmental block end ridge\***  
15-55° dry ridge



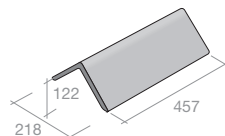
**Modern block end ridge\***  
15-55° dry ridge



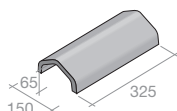
**125° Angle ridge hip 15-25°  
Security 125° Angle ridge/hip  
15-25°**

Also available:

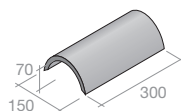
**145° Angle ridge hip 15-22.5°  
Security 145° Angle ridge/hip  
15-22.5°**



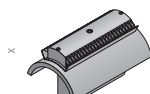
**90° Angle ridge/hip  
45-50° bedded**  
Also available:  
**Security 90° Angle ridge/hip  
45-50°**



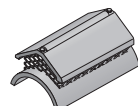
**Pascoll roll baby ridge**  
15-45°



**1/2 round baby ridge**  
15-55°



**Ridge vent terminal**  
15-55° dry ridge



**Gas vent ridge terminal**  
15-55° dry ridge  
Also available:  
**Gas vent ridge for  
condensing boilers**  
Modern ridge 15-55°  
Segmental ridge 15-55°



# Fixings

## Clip and nail packs

The table below shows the quantities packaged together with the correct sized nails.

	Tile clip & nail pack 100 clips & nails		Tile clip & nail pack 500 clips & nails		Right hand verge clip & nail pack 50 clips & nails		Left hand verge clip & nail pack 50 clips & nails		Eave clip and nail pack 100 clips & nails		500g nail pack		
	Code No.	Pack No.	Code No.	Pack No.	Code No.	Pack No.	Code No.	Pack No.	Code No.	Pack No.	Code No.	Pack No.	Approx. Count
<b>Aluminium alloy</b>													
Ludlow Plus	30265	1	30266	6	30290	33	30290	33	30277	22	30350	27	396
Anglia	30269	3	30270	8	30284	12	30286	14	30274	19	30349	26	520
Ludlow Major/EcoLogic	30265	1	30266	6	30287	15	30287	15	30277	22	30371	32	373
Mendip	30267	2	30268	7	30288	16	30287	15	30276	21	30352	29	287
Double Roman	30271	4	30272	9	30289	17	30290	33	30275	20	30351	28	308
Wessex	30267	2	30268	7	30286	14	30286	14	30278	23	–	–	–
Modern	30265	1	30266	6	30290	33	30290	33	30273	18	30350	27	396
Duo Modern	30265	1	30266	6	30290	33	30290	33	30273	18	30350	27	396
Edgemere range	30295	5	30296	10	30263	11	30263	11	30297	24	30398	31	432
Ashmore*	–	–	–	–	30263	11	30263	11	30297	24	30398	31	432
Plain	–	–	–	–	–	–	–	–	–	–	30348	25	793
<b>Stainless steel</b>													
Anglia	–	–	30102	41	–	–	–	–	30111	51	30121	61	182
Mendip	–	–	30103	42	–	–	–	–	30112	52	30123	63	99
Double Roman	–	–	30104	43	–	–	–	–	30116	56	30124	64	109
Wessex†	–	–	30103	42	–	–	–	–	–	–	–	–	–
Edgemere range	–	–	30105	44	–	–	–	–	30115	55	30125	65	109
Ashmore	30130	34	30131	35	–	–	–	–	–	–	30125	65	109
Plain	–	–	–	–	–	–	–	–	–	–	30126	66	302
Ludlow Plus	See 'Soloifix' below	–	See 'Soloifix' below	–	–	–	–	–	30110	50	30120	60	137
Ludlow Major/EcoLogic	See 'Soloifix' below	–	See 'Soloifix' below	–	–	–	–	–	30110	50	30127	67	137
Modern	See 'Soloifix' below	–	See 'Soloifix' below	–	–	–	–	–	30114	54	30120	60	137
Duo Modern	See 'Soloifix' below	–	See 'Soloifix' below	–	–	–	–	–	30114	54	30120	60	137

\* Clips only

† Wessex eaves clip and nail pack only available in aluminium alloy.

## Fibre cement slate fixings

Description	Colour	Quantity
Copper disc rivets		1000
Copper nails		1000
60mm x 14 Gauge Self-sealing screws	Blue/Black	100
Slate hooks for low pitch Birkdale		500

## Solo-fix

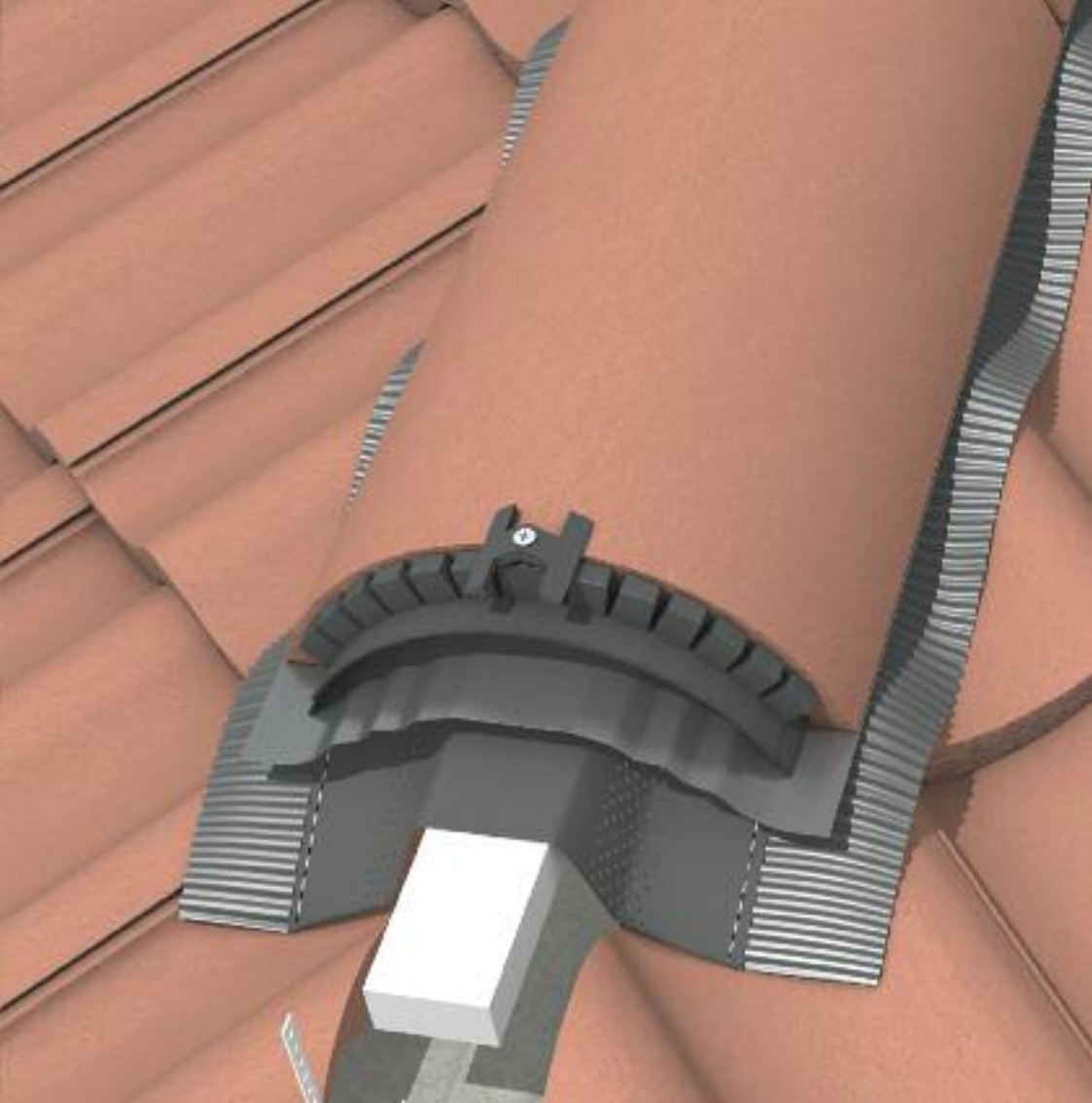
Integrated one-piece clip and nail manufactured from zial coated steel for strength and durability.

Profile	Code No.	Quantity
Ludlow Plus/Ludlow Major/EcoLogic/ Modern/Duo Modern	30430	500 per pack

## Clay interlocking tile fixings

Maxima clips and nails	Code No.	Type	Quantity
Tile clip	30271	clip & nail	100
	30272	clip & nail	500
Eave clip	30452	clip	100
Eave clip nail	30455	nail	100
RH verge clip (for standard tile)	30289	clip & nail	50
LH verge clip (for verge tile)	30289	clip & nail	50
LH verge clip (for standard tile)	30290	clip & nail	50

Melodie clips and nails	Code No.	Type	Quantity
Tile clip	30456	clip & nail	500
Eave clip	30452	clip	100
Eave clip nail	30455	nail	100
RH verge clip	30285	clip & nail	50
LH verge clip (for verge tile)	30285	clip & nail	50



# Dry fix and ventilation

Universal HipFast system

# System selector

	Clay plain tiles	Maxima	Melodie	Concrete plain tiles	Fibre cement slates	Edgemere range	Modern / Duo Modern	Double Roman	Mendip	Ludlow Major / Ecologic	Wessex	Ludlow Plus	Anglia	Ashmore
<b>Universal roofing accessories</b>														
10mm eaves vent system	✓	✓	✓	✓	✓	✓	✓	✓	✓	✓	✓	✓	✓	✓
25mm eaves vent system	✓	✓	✓	✓	✓	✓	✓	✓	✓	✓	✓	✓	✓	✓
Dry verge							✓	✓	✓	✓	✓			
HipFast	✓	✓	✓	✓	✓	✓	✓	✓	✓	✓	✓	✓	✓	✓
RidgeFast	✓	✓	✓	✓	✓	✓	✓	✓	✓	✓	✓	✓	✓	✓
Tile vent	✓	✓				✓	✓	✓	✓	✓	✓	✓	✓	✓
GRP dry valley system	✓	✓	✓	✓		✓	✓	✓	✓	✓	✓	✓	✓	✓
Ridge Roll					✓									
<b>Dry verge</b>														
Cloak verge system	✓			✓			✓*	✓	✓					
Slate verge trim					✓									
Edgemere dry verge						✓								
Ashmore dry verge	✓			✓										✓
<b>Dry hip</b>														
Dry hip system				✓		✓	✓	✓	✓	✓	✓	✓	✓	✓
Dry hip with duo pitch ridges					✓									
<b>Dry valley</b>														
Plain tile valley	✓			✓										
GRP interlocking slate dry valley system					✓									
<b>Ventilated dry ridge</b>														
Ventilated dry ridge				✓	✓	✓	✓	✓	✓	✓	✓	✓	✓	✓
Ventilated mono dry ridge				✓	✓	✓	✓	✓	✓	✓	✓	✓	✓	✓
Fibre cement ventilated ridges					✓									
<b>Ventilation terminals</b>														
Gas vent ridge terminals				✓		✓	✓	✓	✓	✓	✓	✓	✓	✓
Ridge vent terminals				✓	✓	✓	✓	✓	✓	✓	✓	✓	✓	✓
In-line vents and contour vents	✓			✓	✓	✓	✓	✓	✓	✓	✓	✓	✓	✓
Tile vent terminals						✓	✓	✓	✓	✓	✓			✓
Ridge vent for condensing boiler				✓	✓	✓	✓	✓	✓	✓	✓	✓	✓	✓

\* Suitable for Modern only

# Universal roofing accessories

Suitable for use with Marley Eternit roofing products and those of other manufacturers.



Universal  
10mm/25mm eaves vent

Designed for use with all tiles and slates. The over fascia strip ventilator satisfies requirements for 10mm or 25mm continuous eaves ventilation.

<b>Universal 10mm eaves vent system (6m pack)</b> - 6m eaves rafter roll - 10 No. felt support tray - 6 No. strip ventilator	46350
<b>Universal 25mm eaves vent system (6m pack)</b> - 6m eaves rafter roll - 10 No. felt support tray - 6 No. strip ventilator	46351
Comb filler strip	30425
Continuous rafter roll (2 x 6m)	46323



Universal  
Dry verge

Designed for use with large format interlocking tiles installed at a range of headlaps and rafter pitches from 15° to 45° (suitable up to 55° subject to ridge system).

<b>Dry verge system</b>		
28 No. left hand units		391*
28 No. right hand units		392*
Fixing kit (also available)		39300
<b>End caps</b>		
Modern ridge		394*
Segmental ridge		395*
Modern mono-ridge	Left hand	408*
	Right hand	409*
Segmental mono-ridge	Left hand	427*
	Right hand	428*
<b>Dry verge refurbishment kit</b>		35800

\* Suffix with colour code  
01 Grey, 03 Brown,  
04 Terracotta

Universal  
HipFast

Simple and rapidly installed  
dry fix system compatible with  
all tiles and slates up to 45°  
(suitable up to 60° subject to  
tile/slate profile).

<b>Universal HipFast system (6m pack)</b>	34001
<hr/>	
- 6m length hip roll	
- 6 No. batten brackets	
- 13 No. hip unions	
- 2 No. tapered filler units	
<hr/>	
<b>Fixing material</b>	
- 24 No. tile head clips	
- 30 No. tile tail clips	
<hr/>	
<b>Hip support trays</b>	34002
- 9 No. 715mm	
<hr/>	
<b>RidgeFast/HipFast Union Packs</b>	33003



## Technical toolkit

Marley Eternit's website features helpful tools that make design and specification as straightforward as possible:  
**[marleyeternit.co.uk/resources](http://marleyeternit.co.uk/resources)**



### Universal RidgeFast

Simple and rapidly installed dry fix system providing 5mm continuous ridge ventilation and compatible with all tiles and slates from 15° to 60° dependent on circumstances\*.

**Universal RidgeFast system (6m pack)** 33000

- 6m length ridge roll
- 10 No. ridge batten brackets
- 13 No. ridge union straps
- 13 No. ridge union clamps

RidgeFast roll applicator (optional)	33002
RidgeFast blanking tape (optional)	33001

\* Contact Technical Advisory Service for more information



### Universal Tile vent

For roof void ventilation and connection to 110mm soil/mechanical extract system. Compatible with large format interlocking tiles and roof pitches 20° and above.

<b>Universal Tile vent</b>	
Grey	36700
Brown	36703
Terracotta	36704

<b>Flexible pipe</b>	39091
----------------------	-------



### Universal GRP dry valley

Mortar free solution suitable for use with concrete interlocking tiles/slates and concrete/clay plain tiles. Suitable on rafter pitches from 17.5° to 60° and accommodates up to 20° pitch difference either side of valley.

<b>Universal GRP dry valley (3m lengths)</b>	
low profile	30422
high profile	30421



## More about our dry fix systems

Our dedicated website contains further information about dry fix and ventilation solutions, including the Universal range, which not only works with our roof tiles and slates, but those of other manufacturers too: [www.whydryfix.co.uk](http://www.whydryfix.co.uk)

# Dry fix and ventilation



## Universal Plain tile vent

Designed for natural, mechanical or soil pipe ventilation. Provides 10,000mm<sup>2</sup> free area of ventilation and suitable for Ashmore and Plain tile roof pitches 22.5° and above†.

### Universal plain tile vent

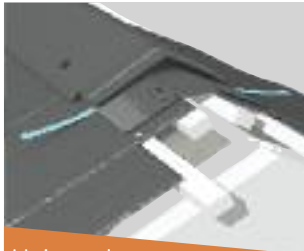
Grey	45501
Brown	45502
Red	45504
Clay Red	45505
Clay Brown	45506

Flexible pipe	
ID 110mm (sold separately)	39091

### Pressure resistance values

Pa (litres/sec airflow)	15	30	60
Free air area 10000mm <sup>2</sup>	13.6	53.7	21

† Please note minimum pitch of tile will apply.



## Universal Ridge roll

Simple and rapidly installed dry fix system providing 5mm continuous ridge ventilation. Compatible with fibre cement slates and ridges.

### Ridge roll

Fibre cement ventilated dry ridge (illustrated above)	33010
Duo pitch ridge	(no code)
Stop end for duo pitch ridge	(no code)
Mono ridge	(no code)
Stop end for mono ridge	(no code)
Ventilated ridge roll	(no code)



## Continuous dry verge systems

For both new and refurbishment work, provides a mechanically fixed, durable, maintenance free verge solution for rafter pitches up to 55° with fibre cement slates and natural slates.

### Slate verge trim (illustrated above)

Fibre cement slates (3 metre)	MA42206
-------------------------------	---------

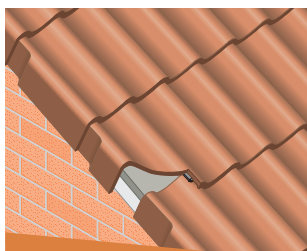
### Ashmore and plain tile dry verge

Verge section (3 metre)	38501
Fixing kit	38510



## Technical toolkit

Marley Eternit's website features helpful tools that make design and specification as straightforward as possible:  
[marleyeternit.co.uk/resources](http://marleyeternit.co.uk/resources)



## Cloak verge systems

Provides a mechanically fixed, durable, maintenance free verge solution. Suitable up to 45° for Mendip, Modern, Double Roman tiles and 55° for plain tiles.

### Mendip cloak verge (illustrated above)

Left hand	245
Right hand	246
Mendip half tile	147
Mendip fixing kit	42520

### Double Roman cloak verge

Left hand	265
Right hand	266
Double Roman half tile	102
Double Roman fixing kit	42520

### Concrete plain tile cloak verge

Left hand	249
Right hand	250

### Segmental block end ridge

	191
--	-----

### Segmental mono block end ridge

Left hand	189
Right hand	190

### Modern cloak verge

Left hand	371
Right hand	370
Modern cloak verge half tile	372
Modern fixing kit	37300

### Modern block end ridge

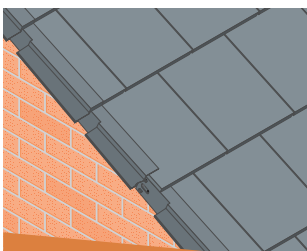
	374
--	-----

### Modern mono block end ridge

Left hand	375
Right hand	376

### Clay plain tile cloak verge (no code)

Available in all colours to match main tiles.



## Edgemere dry verge systems

Compatible with Edgemere, installed at a range of headlaps and rafter pitches from 17.5° to 45° (suitable up to 55° when used with the 'steep pitch ridge batten section', see Dry ridge system).

### Verge units

Left hand	381*
Right hand	382*

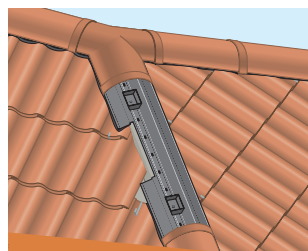
Edgemere dry verge fixing kit	38300
-------------------------------	-------

### End caps

Edgemere ridge	384*
Modern mono-ridge	
Left hand	408*
Right hand	409*

Dry verge refurbishment kit	35800
-----------------------------	-------

\* Suffix with colour code  
01 Grey, 03 Brown,



## Dry hip system

Suitable for all concrete tiles when used in conjunction with Third round or Modern hip tiles for roof pitches 15° to 45°.

### Batten sections

Low profile	43300
High profile	43400

### Fixing kits

Low profile	43601
High profile	43611

Hip tail clip pack	43602
--------------------	-------

### Ridge unions

Modern ridge union	4140*
Third round hip union	4350*

### Apex caps

Modern hip apex cap	(15-24°) 4381*
	(25-35°) 4382*
	(36-45°) 4383*
Third round hip apex cap	(15-24°) 4371*
	(25-35°) 4372*
	(36-45°) 4373*

### Block end hip tiles

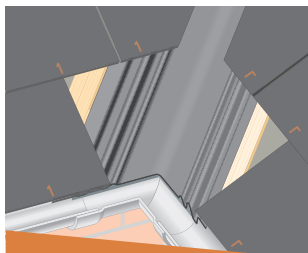
Third round block end hip tile	291
Modern block end hip tile	292

\* Suffix with colour code  
01 Grey, 03 Brown,  
04 Terracotta





# Dry fix and ventilation

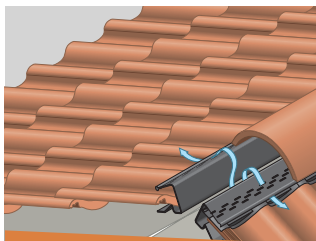


## Valley systems

The GRP Valley for large format tiles and Slate GRP Dry Valley for fibre cement slates are both suitable for roof pitches from 22.5° to 45°.

### Slate GRP dry valley (illustrated above)

For fibre cement slates 30578



## Dry ridge systems

Mechanically fixed, weathertight and mortar free solution providing 5mm continuous ridge ventilation. Suitable for concrete tiles and fibre cement slates when used in conjunction with Segmental or Modern ridge tiles for roof pitches up to 55°.

### Batten sections

Plain tile	41099
Low profile	41101
High profile	41201
Steep pitch (low profile)	41102
Steep pitch (high profile)	41202

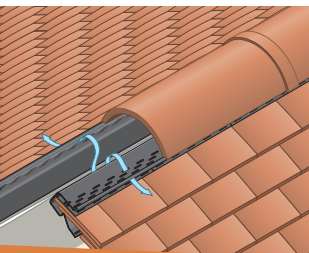
### Ridge unions

Segmental ridge union	413*
Segmental mono-ridge union	423*
Modern ridge union	414*
Modern/segmental adaptor ridge union	420*

### Fixing Kits

Concrete tiles & slates fixing kit	41000
------------------------------------	-------

\* Suffix with colour code 01 Grey, 03 Brown, 04 Terracotta



### Filler units†

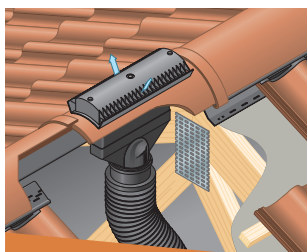
Double Roman filler unit - vented	42105
Plain / Modern / Duo Modern / Edgemere filler unit - vented	41501
Double lap slates filler unit - vented	41703
Ludlow Major filler unit - vented	41601
Ludlow Plus filler unit - vented	41508
Mendip filler unit - vented	41701
Wessex filler unit - vented	41901
Anglia filler unit - vented	41506
Dry ridge set out gauge	41001

### Apex caps

Segmental ridge junction	439*
Modern ridge junction	440*
Top abutment support strip	42505
Top abutment fixing kit	41000

† Where non-vented dry ridge is required, use Blanking Tape (2 x 2m, code 33001)





## Ridge vent terminals

Suitable for soil/mechanical ventilation. Provides high level ventilation for concrete tiles (9,500mm<sup>2</sup> free area), clay plain tiles or fibre cement slates (10,000mm<sup>2</sup> free area).

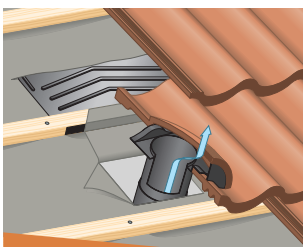
<b>Ridge vent terminal</b> (illustrated above) (concrete tiles)	198
---	-----

<b>Ridge for condensing boilers</b>	
Segmental	254
Modern	255

<b>Gas vent ridge terminal</b> (concrete tiles)	
(with extension piece)	256
Gasket set (spare)	30346

Plumbers accessory pack	39090
-------------------------	-------

For full product codes, please speak to Customer Services on 08705 626400.



## Tile vent terminals

Available in a wide range of colours and finishes provides for high/low level roof space ventilation. Suitable for soil/mechanical ventilation (except Ashmore)<sup>†</sup>.

<b>Terminals (with spigot)</b>	
Mendip (illustrated above)	294
Edgemere	259
Modern	295
Wessex	296
Ludlow Major	297
Double Roman	298
Flexible pipe	39091

<b>Ventilation roof tiles</b> (with catchment tray)	
Ashmore	263
Available in all colours to match main tiles.	

<sup>†</sup> Please note minimum pitch of tile will apply.



## In-line vents

Discreet high performance vent terminals for high/low level roof space ventilation. Suitable for soil and mechanical ventilation. Minimum roof pitch 22.5° (except Plain tiles 35°).

<b>Contour tile vents</b>	
Mendip (illustrated above)	452*
Ashmore	450*
Plain (clay and concrete)	455*
Edgemere	465*
Modern	451*
Wessex	459*
Ludlow Major	456*
Double Roman	453*
Ludlow Plus	457*
Anglia	460*

Clay in-line tile ventilator	(no code)
Clay in-line tile adaptor	(no code)

Flexible pipe	39091
---------------	-------

<b>Fibre cement in-line slate ventilator</b>	(no code)
--	-----------

\* Suffix with colour code 01 Grey, 03 Brown, 05 Red

# Dry fix and ventilation



## Mortar bedded security ridge

Mechanical fixing system for mortar bedded ridge tiles, helping house builders and contractors meet British Standards and NHBC guidelines.

**Mortar bedded security ridge kit**  
(illustrated above) 43605

- 10 No. batten brackets
- 13 No. clamps
- 13 No. 75mm x 4.8mm s/s screws
- 40 No. 25mm x 2.65mm s/s ARS nails

Watch a quick video on mortar bedded mechanical fixing at [marleyeternit.co.uk/securityridge](http://marleyeternit.co.uk/securityridge) or scan the QR code below



## Mortar bedded security hip

Mechanical fixing system for mortar bedded hip tiles, helping house builders and contractors meet British Standards and NHBC guidelines.

**Mortar bedded security hip kit**  
(illustrated above) 43606

- 6 No. batten brackets
- 13 No. clamps
- 13 No. 75mm x 4.8mm s/s screws
- 40 No. 25mm x 2.65mm s/s ARS nails

Tile tail clip pack 43602  
Tile head clip pack 43604

Watch a quick video on mortar bedded mechanical fixing at [marleyeternit.co.uk/securityhip](http://marleyeternit.co.uk/securityhip) or scan the QR code below



## More about our dry fix systems

Our dedicated website contains further information about dry fix and ventilation solutions, including the Universal range, which not only works with our roof tiles and slates, but those of other manufacturers too: **[www.whydryfix.co.uk](http://www.whydryfix.co.uk)**



## Other products

Farmscape and Profile 3 profiled sheeting, Coastal House, Hampshire

# Profiled sheeting

Marley Eternit are the only manufacturer of fibre cement within the UK. We have been producing profiled sheeting for over 90 years and offer a wide range of corrosion-resistant and low maintenance systems across a wide range of sectors: commercial, residential, educational and agricultural.

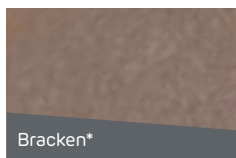
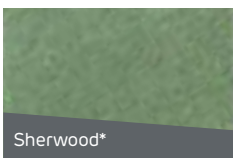
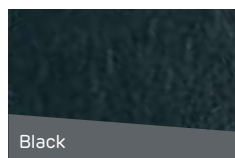
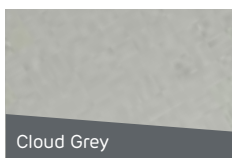
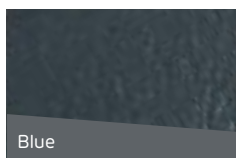
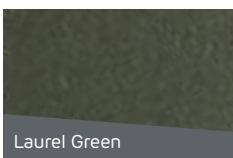
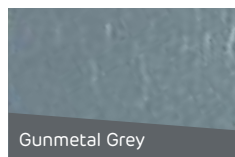
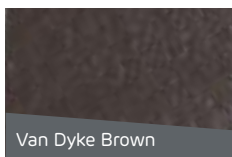
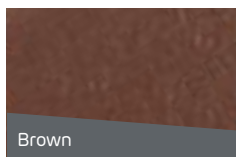
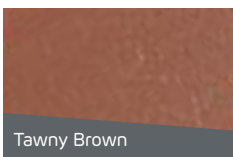


## Painted colour range

Experience gained over many years has shown that the standard Marley Eternit colour range will meet the majority of design requirements in both rural and urban areas.

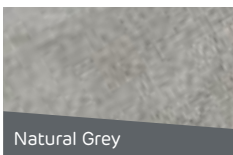
All the standard colours have been chosen for their ability to harmonise with the most commonly used building materials – brick, slate, stone, concrete and timber.

\* Matt finish



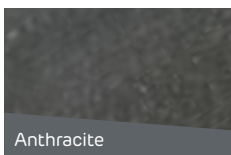
## Natural Grey

Profile 6 and Profile 3 can also be supplied in Natural Grey.



## Farmscape

Anthracite sheets have a pigmented surface layer. Together with subtle variations in tone inherent in any natural cementitious product, the appearance will blend with almost any landscape from the day the building is erected.





# Cedral Weatherboard

Cedral is an ideal low maintenance, alternative to traditional timber or PVCu weatherboarding. With the visual appeal of natural timber, simplicity of installation and resistance to rot, Cedral Weatherboard is an attractive, low maintenance cladding solution for new build or renovation projects.



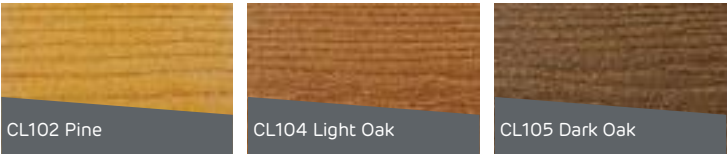


## Cedral Weatherboard colour range



## Woodstains

Cedral Weatherboard is also available in a range of woodstain shades to simulate the colour and texture of a variety of timber stocks.

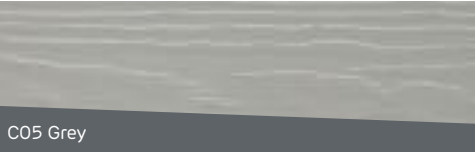


# Cedral Click

The Cedral Click range gives a unique, beautiful and rot-resistant wall covering assembled in just a few clicks with the proven performance and aesthetics of Cedral Weatherboard technology. Cedral Click is the UK's first fibre cement tongue and groove weatherboard solution.



Cedral Click colour range







This publication is based on the latest data available at the time of printing. Due to product changes, improvements and other factors, the Company reserves the right to change or withdraw information contained herein without prior notice. For specific applications users should refer to the Technical Advisory Service and relevant Standards and Codes of Practice for guidance. The photography shown in the document should not necessarily be taken as recommendations of good practice. The printing process restricts the exact representation of colours. For true colour reference, please request product samples.

Call  
Email  
Or visit



01283 722588  
[info@marleyeternit.co.uk](mailto:info@marleyeternit.co.uk)  
[www.marleyeternit.co.uk](http://www.marleyeternit.co.uk)

Marley Eternit Lichfield Road Branston Burton upon Trent DE14 3HD



an **etex** company

# Never miss an update again...

Ensure you receive the latest edition of  
this brochure and new product information  
as soon as it's available.

[Click here to register](#)