

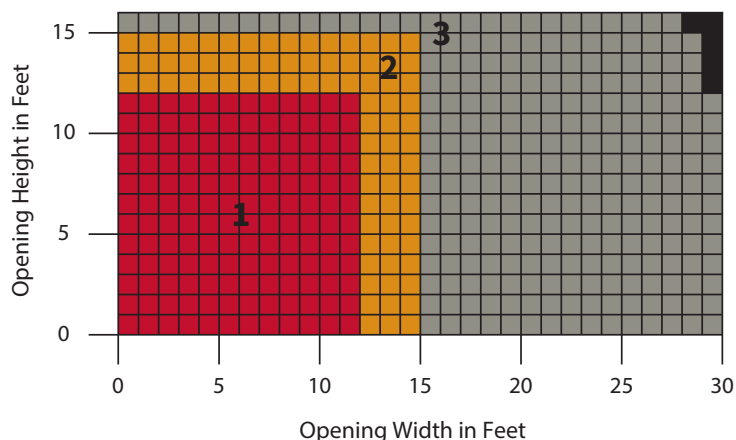
HIGH PERFORMANCE LINE

# EXTREME® 324 PERFORMANCE GRILLES

Models EPG324 (straight) and EPG324B (brick)

## MEASURE THE WIDTH AND HEIGHT OF THE OPENING

### GRILLE SIZE AND AREA



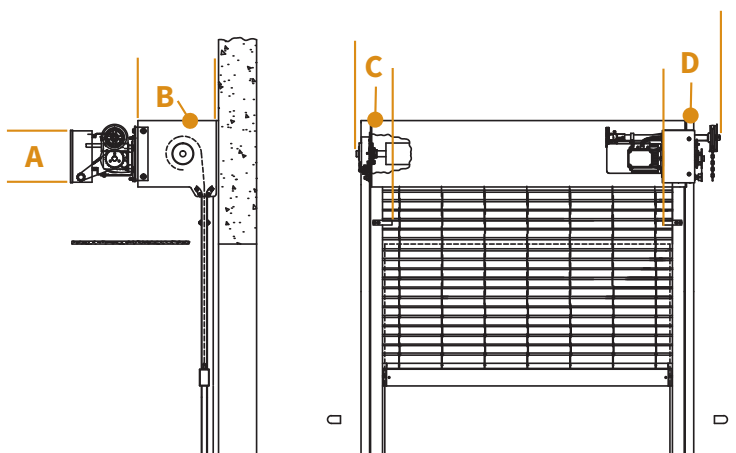
### COMPONENT DIMENSIONS

Reference the zone number to view component dimensions for motorized doors.

Dimensions  
in Inches

1	17	19	4.5	7
2	18	20	4.5	7
3	19	21	4.5	7

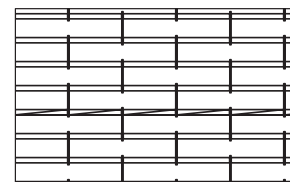
Zone A B C D



## CURTAIN DESIGNS Straight and Brick



Straight



Brick

The dimensions featured on this sheet are provided as a guide. Please consult factory for exact dimensions.

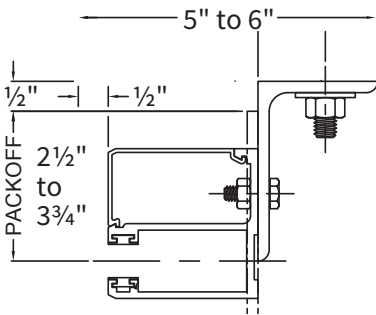
## HIGH PERFORMANCE LINE **EXTREME® 324 PERFORMANCE GRILLES**

**Models EPG324 (straight) and EPG324B (brick)**

### GUIDE CONSTRUCTION OPTIONS

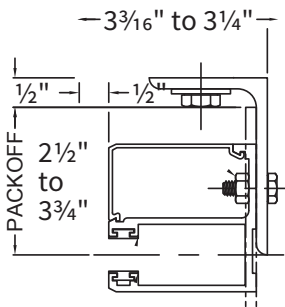
#### FACE OF WALL Z

Typically used with masonry wall construction, guides are mounted to the interior or exterior side of the wall.



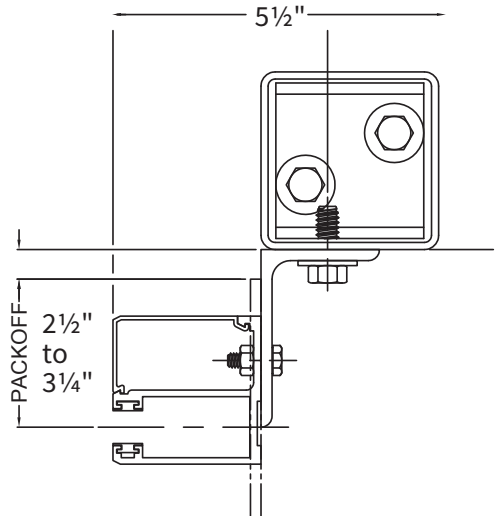
#### FACE OF WALL E

Typically used with steel jambs, guides are mounted to the interior or exterior side of the wall.



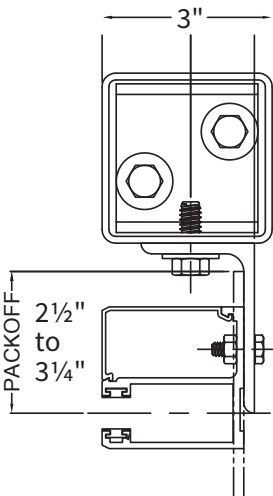
#### FACE OF WALL Z WITH TUBES

Used when there is uneven or insufficient wall structure, guides are mounted to tubes attached to floor and overhead structure.



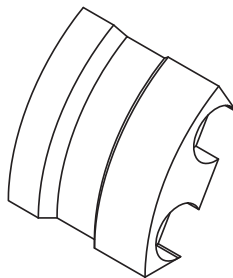
#### FACE OF WALL E WITH TUBES

Used when there is uneven or insufficient wall structure, guides are mounted to tubes attached to floor and overhead structure.



#### BELLMOUTH UHMW HIGH CYCLE

For quiet, efficient operation



The dimensions featured on this sheet are provided as a guide. Please visit our website at [www.CooksonDoor.com/drawings](http://www.CooksonDoor.com/drawings) to generate drawings on demand with exact dimensions.

### CUSTOM-DESIGNED SOLUTIONS

Our experienced Architectural Design Support Team can customize our products to fit your specific application. Call 800.294.4358 ext. 1280 or email [ads@cooksondoor.com](mailto:ads@cooksondoor.com).