



ThermaSeal®

Sectional Thermal Doors



For maximum thermal protection, choose ThermaSeal®, our durable, energy-efficient sectional door. Our exclusive process fills 100% of the door's interior space with our proprietary energy-saving polyurethane Neufoam™ insulation, to deliver exceptional R-values. This process also provides superior foam density for excellent structural integrity.



TM320

With the benefits of the TM300, plus a heavy-duty 20-gauge exterior, the TM320 is perfect for meeting job specific requirements without sacrificing the features you expect from a Raynor Sectional Door.



TM300

The ultimate choice for thermal protection is the ThermaSeal TM300 with an R-value of 24.54. This 3" thick model is the most energy efficient in the ThermaSeal line.



TM220

The choice for durability and thermal efficiency in challenging environments is the ThermaSeal TM220. With a heavy duty 20-gauge exterior and a 18.3 R-value, this 2" thick model has all the features you expect and options you need for a wide range of applications.



TM200

With an R-value of 18.3, this 2" thick model is a great option for energy efficiency in the ThermaSeal line. With all the standard features you expect from a ThermaSeal door, the TM200 is a great fit for a variety of applications demanding performance.



TM200C

The TM200C provides the same great quality and durability you get from all Thermaseal models, with the added benefit of 7 colors to choose from.

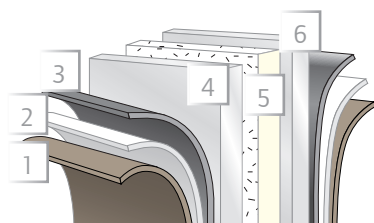


TM175

With a 16.4 R-value, this benchmark product provides proven Raynor reliability and durability to meet or exceed the requirements of daily use.

ThermaSeal®

For maximum thermal protection, choose ThermaSeal®, our durable, energy-efficient sectional door. Our exclusive process fills 100% of the door's interior space with our proprietary energy-saving polyurethane Neufoam™ insulation, to deliver exceptional R-values. This process also provides superior foam density for excellent structural integrity. Rust-resistant galvanized steel is finished with a two-coat, baked-on paint process for long life. The superior thermal bond between steel and polyurethane Neufoam™ is warranted against delamination for 10 years.



1. baked-on finish
2. epoxy primer
3. galvanized layer
4. high-strength steel
5. polyurethane insulation
6. high-strength steel



ThermaSeal Interior

Application Guide

	TM320	TM300	TM220	TM200	TM200C	TM175
Agricultural Buildings	●	●	●	●	●	●
Car Wash/Corrosive Environments	●	●	○	○	○	○
Commercial/Multi-Tenant	●	●	●	●	●	●
Fire Station/Ambulance	●	●	●	●	●	●
High Security	●	●	●	●	●	●
Large Opening Size	●	●	●	●	●	●
Mining, Pulp & Paper	●	●	●	○	○	○
Non-insulated Storage	○	○	○	○	○	○
Service Station	●	●	●	○	○	○
Thermal Environments	●	●	●	●	●	●
Transit Facility/Truck Terminal	●	●	●	●	●	●
Underground Parking	●	●	○	○	○	○
Warehouse/Manufacturing	●	●	●	●	●	●

● Best ○ Good Solution ○ Applicable

Features



Maximum Thermal Protection

Energy-saving polyurethane foam insulation is used to deliver exceptional R-values.



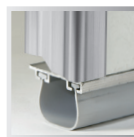
Rugged Hardware and Springs

Your ThermaSeal door comes packaged with the right combination of long-lasting hardware, track and springs to precisely match your door's size and application.



Reduced Airflow

Dual vinyl barriers dramatically reduce air infiltration. A true thermal break prevents heat loss and eliminates any metal-to-metal contact between surfaces.



Decreased Energy Costs

ThermaSeal doors help you reduce energy costs with a U-shaped, vinyl bottom weatherseal and sturdy aluminum retainer.

Model Options* and Upgrades



Choice of Windows

Select either 24" x 8" (shown), 24" x 12", or 34" x 16". ThermaSeal doors are also available with aluminum full-view window sections. Choose from a variety of insulated glass, acrylic, tempered and polycarbonate styles to suit any application.



Customized Track and Hardware Systems

Track systems are supplied to fit special clearances, inclines or contour applications. Hardware and track systems can be designed to fit any need.* Additional trussing is available for special wind loading applications.



IECC Requirements Package

The International Energy Conservation Code (IECC) requires building components to meet minimum U-factor and Air Infiltration rates. This option will ensure the TM200, TM220 and TM175 will exceed the latest IECC standards by using the required header and jamb seals and track mounting. Windows, exhaust ports and pass doors cannot be used. Raynor's IECC package yields the following results.

Model	U-factor	Air Infiltration @25mph
TM300	tbd	
TM220	0.19	0.12 cfm/ft ²
TM200	0.19	0.12 cfm/ft ²
TM175	0.21	0.12 cfm/ft ²

High-cycle Counterbalance Systems

For reliable operation in high-traffic areas, choose



high-cycle torsion springs with 25,000, 50,000 or 100,000-cycle life.* For reduced maintenance and ultra-smooth operation in heavy-use applications, choose a weight counterbalance system.

Locks

In applications where control and access are important, choose from a variety of locking options to help keep your building secure. Locks come in both inside and outside variations.



Carbon Monoxide Vent

Allows you to channel fumes to the outside when the door is closed. Available in a variety of sizes.



Removable Center Posts

Carry-away and swing-up options are available for extra-wide openings. Ideal for agricultural or airplane hangar applications.



Pass Door

Pass doors conserve energy by allowing entry door access without the full operation of the garage door and minimize wear and tear by conserving cycle life.



**Some options may be limited to door size or model.*

Series MODEL	Max. Opening Width	Max. Opening Height	Construction	Surface Texture	Section Thickness	Exterior/Interior Steel Thickness	End Style Steel Thickness	Insulation (R-Value)	Thermal Break	Colors	Section Limited Warranty**
ThermaSeal TM320	38'2"	24'	Steel Sandwich	Exterior: Stucco (Flush) Interior: Pencil Groove	3"	20-Gauge/26-Gauge	16-Gauge	Polyurethane Foam (24.54)	Yes	White, OptiFinish™	10 Years (Rust-through & Delamination)
ThermaSeal TM300	40'	24'	Steel Sandwich	Stucco (Pencil Groove)	3"	26-Gauge / 26-Gauge	16-Gauge	Polyurethane Foam (24.54)	Yes	White, Brown, Frost White, Beige, Sepia, OptiFinish™	10-Years (Rust-through & Delamination)
ThermaSeal TM220	36'	24'	Steel Sandwich	Stucco (Pencil Groove)	2"	20-Gauge / 26-Gauge	16-Gauge	Polyurethane Foam (18.3)	Yes	White, OptiFinish™	10-Years (Rust-through & Delamination)
ThermaSeal TM200	36'	24'	Steel Sandwich	Stucco (Pencil Groove)	2"	26-Gauge / 26-Gauge	16-Gauge	Polyurethane Foam (18.3)	Yes	White	10-Years (Rust-through & Delamination)
ThermaSeal TM200C	20'2"	16'	Steel Sandwich	Stucco (Pencil Groove)	2"	0.013" / 0.0127"	20-Gauge	Polyurethane Foam (18.3)	Yes	Almond, Bronze Tone, Brown, Desert Tan, Battleship Gray, Sandstone, Black, Slate	10-Years (Rust-through & Delamination)
ThermaSeal TM175	36'	24'	Steel Sandwich	Stucco (Pencil Groove)	1 3/4"	25-Gauge / 26-Gauge	16-Gauge	Polyurethane Foam (16.4)	Yes	White, Brown, OptiFinish™	10-Years (Rust-through & Delamination)

****Limited Warranty** See your local Raynor Dealer for complete details.



OptiFinish

Raynor's OptiFinish allows your ThermaSeal garage door to be customized with more than 1800 Sherwin-Williams® colors.

Commercial Operators



ControlHoist 2.0

Commercial Operators

Raynor ControlHoist™ 2.0 (with solid state logic board control) operators are available in a variety of motor, voltage, and phase combinations for any commercial or industrial application. Contact your local Raynor Authorized Dealer to select the operator and accessories that are suited for your door's size and usage.



Control Options

A variety of control stations, photoelectric eyes and remote activation devices are available.

Dependable. Stylish. Timeless

Raynor also offers a full line of sectional, rolling, high performance and traffic doors as well as security grilles. See your Raynor Dealer or visit www.raynor.com for more information.



DuraCoil™

FabriCoil™

DuraShutter™

Professional Installation and Service

Depend on your Raynor Dealer

When you select Raynor, you're not just getting a superior garage door - you're also getting professional garage door installation and service expertise.

Every Raynor garage door is installed by a trained Raynor professional, and that means added benefits for you. First, you won't have to deal with it yourself. Second, because it's done right the first time, your door will deliver performance and reliability from the day it's installed. Your technician will check your door for everything from safety to performance and appearance. Trust your Raynor garage door to someone who knows it better than anyone else, your professional Raynor Dealer.



P.O. Box 448, 1101 East River Rd.
Dixon, IL 61021-0448
1-800-4-RAYNOR (472-9667)

Exclusively Distributed by: