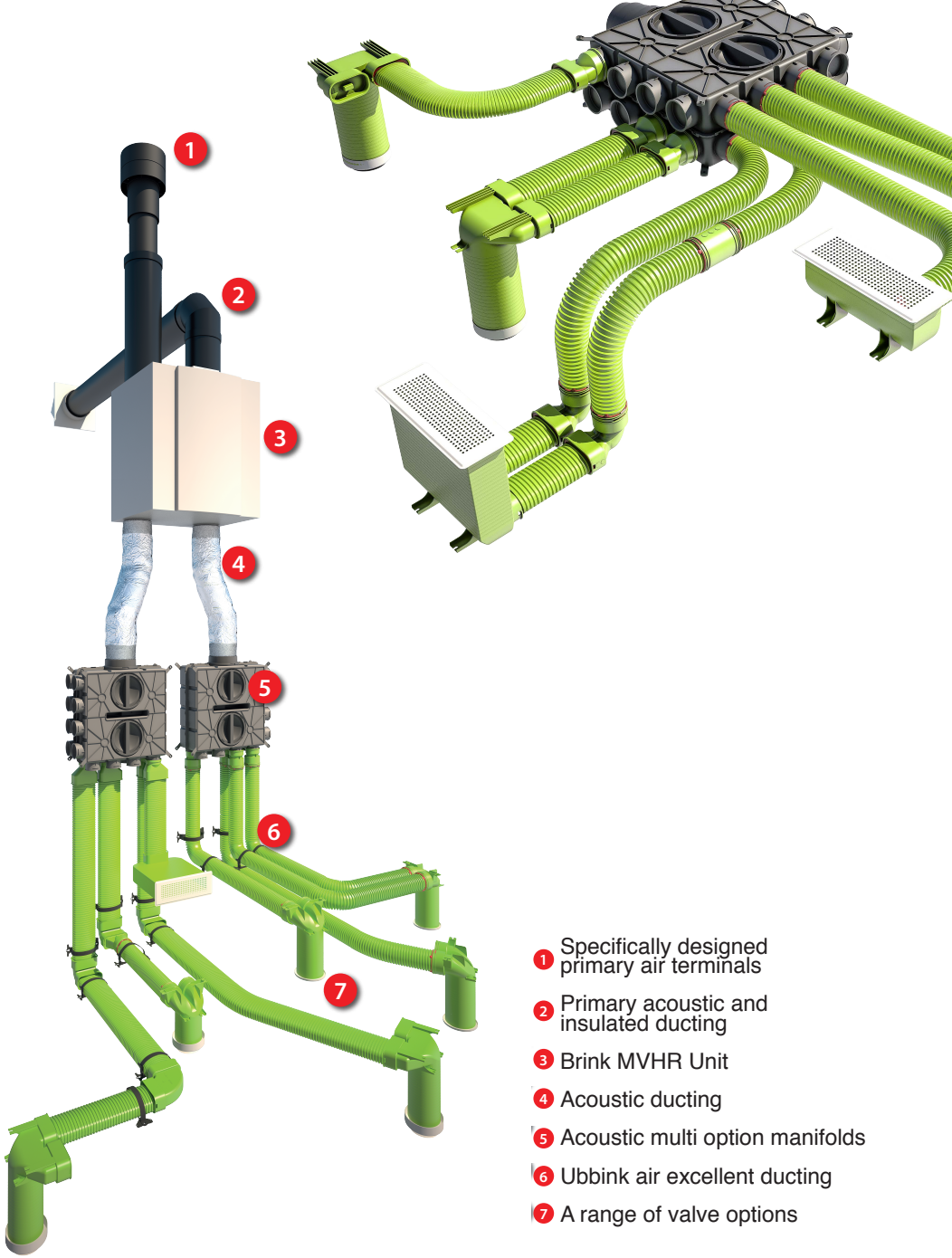


**IF YOU ARE  
BUILDING,  
READ THIS  
BOOKLET.**

(Our tips for any project)



- 1 Specifically designed primary air terminals
- 2 Primary acoustic and insulated ducting
- 3 Brink MVHR Unit
- 4 Acoustic ducting
- 5 Acoustic multi option manifolds
- 6 Ubbink air excellent ducting
- 7 A range of valve options

# ONE

## **Effective Ventilation Is Essential for Any Modern Home Brink MVHR and Ubbink Ducting**

.....

Modern homes are more energy efficient than ever before. And low energy homes and Passive Houses use less energy still, thanks to the use of extensive insulation and construction techniques designed to minimise air leakage. That's why effective ventilation is more important than ever.

Failure to ventilate a modern home effectively, will not just result in a stuffy house. It will cause condensation, mould and mildew. In some instances, it can even lead to the development or deterioration of respiratory illnesses. On other occasions, elevated moisture levels can cause significant damage to the fabric and structure of a property too.

A mechanical ventilation system is essential in any modern home. And a Mechanical Ventilation with Heat Recovery (MVHR) System doesn't just ventilate your home, it recovers waste heat too. The result is a ventilation system which when compared with traditional ventilation methods, doesn't just ventilate your home effectively, but maximises energy efficiency, whilst minimising energy bills.



.....  
[www.iakonline.com/myproject](http://www.iakonline.com/myproject)



# TWO

## **Choose Radiators Which Produce More Heat Whilst Using Less Energy - Fondital Aluminium Radiators**

.....

If you're installing a traditional, 'wet' heating system with radiators, you'll want to take a closer look at Fondital die-cast aluminium radiators.

Remarkably efficient, they're characterised by a low water content, rapid heat up times and fast heat transfer – helping get your home to temperature more quickly, whilst using less energy. They're the ideal choice when installing a modern, high-efficiency, condensing boiler. And because, they're manufactured from aluminium, they benefit from enhanced protection against corrosion and benefit too, from a conditional, manufacturer's warranty of up to 20-years.



.....  
[www.iakonline.com/myproject](http://www.iakonline.com/myproject)

# THREE

## **Direct Air To Your Stove.**

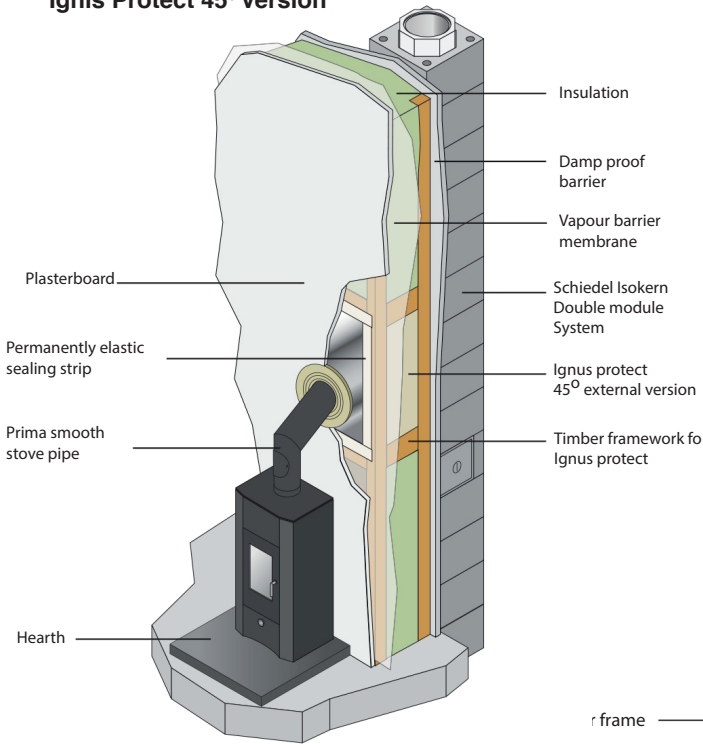
### **Heta Wood Burning and Multi fuel Stoves**

.....

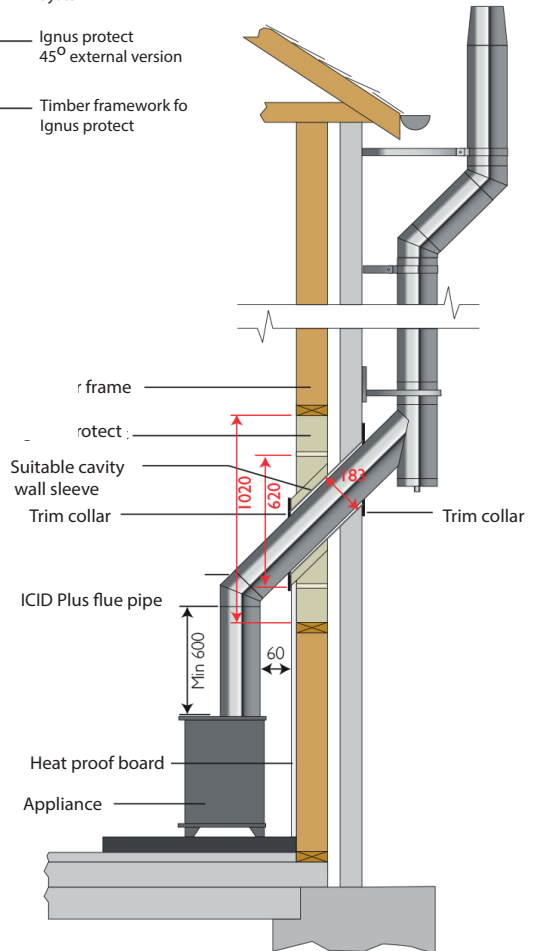
You already knew that every stove needs air to burn. But did you know that traditionally, stoves have sourced combustion air from inside your home? That's because air consumed in the combustion process, must be replaced. And that can mean cold air being drawn into your home, compromising energy efficiency and creating drafts.

Heta stoves are different. Every Heta stove is available with a dedicated external air connection. This draws air in from outside your home, helping maintain the airtight integrity of your property, whilst delivering a cleaner, more efficient and draft free burn.

## Ignis Protect 45° Version



## Ignis Protect ICID Plus on timber frame wall



# FOUR

## **Choose A Flue and Chimney System Purpose Designed for Low Energy and Timber Frame Homes.**

### **Schiedel Chimney Systems**

.....

If you're building a timber frame or low energy home and considering the installation of a gas, pellet or wood burning stove, you might be left wondering how to flue the stove whilst maintaining the airtight structure of your home.

The good news is that Schiedel Rite-Vent offer clever, off-the-shelf, solutions designed to allow you to just that.

Ignis Protect is designed to penetrate combustible walls, whilst maintaining an airtight structure. It exceeds all applicable British, Irish and European fire safety requirements. External and internal versions are available to accommodate wall thicknesses of up to 500mm.

And if you're planning to take a flue through a cold loft or roof space, you'll want to take a closer look at Schiedel Rite-Vent's clever Protect Box. It allows the chimney to pass through an airtight membrane at ceiling level without compromising its integrity. It usefully provides for zero distance to combustible materials – allowing you to install up to 600mm of loft insulation. And just like every Schiedel Rite-Vent product, it's been engineered to exceed the most demanding British, Irish and European requirements.

**NOW  
WITH  
LIFETIME  
GUARANTEE!**



.....  
[www.iakonline.com/myproject](http://www.iakonline.com/myproject)

# FIVE

## **Choose Chimney and Flue Systems Guaranteed to Stand the Test of Time - Schiedel Chimney Systems**

.....

Modern stoves and boilers are designed to offer a long and useful service life. So, it makes sense to choose a chimney and flue system which will last as a long as your appliance.

That's the guarantee Schiedel Rite-Vent provides on selected flue and chimney products. They're supplied complete with a conditional, manufacturer's guarantee that they'll last at least as long as the appliance they're connected to.

If you're choosing a flue or chimney system, why settle for less?







## **Take Control of Your Heating. Danfoss Central Heating Controls.**

.....

If you're specifying a traditional central heating system for your home, then you'll almost certainly choose a high efficiency, condensing boiler. But if you're determined to reduce energy consumption and maximise total system efficiency, an efficient boiler is only part of the solution.

Controls are central to lowering energy usage and to maintaining a comfortable living environment in your home. Danfoss is one of the world's largest heating controls manufacturers. Today's Danfoss range offers everything you require to create a heating system, optimised to suit your home and your lifestyle, whilst reducing energy consumption and usage at source.



Akos Eros



Akos Polaris Large G2



Akos Mercury



# SEVEN

## **Choose A Highly Efficient, Clean Burning Fire Akos Gas Fires**

.....

Available in an extensive choice of outputs and designs, Akos gas fires will prove a welcome addition to any home. Characterised by a contemporary, minimalist form factor, there is however much more to Akos than simply stunning surface design.

At the heart of every Akos fire is a patented gas burner. It's A rated and over 80% efficient, so it produces more heat, whilst using less fuel. And thanks to its clever, responsive technology, you can turn down the burner without compromising the stunningly beautiful flame picture, which is reminiscent of a traditional, wood-fired stove.

Designed for connection to an outside air source, Akos Gas Fires also help maintain the airtight integrity of your home, drawing combustion air exclusively from an outside source. And because Akos fires burn only gas, unlike wood-fuelled stoves, there's no ash pan to empty and you benefit from reduced maintenance requirements too.



[www.iakonline.com/myproject](http://www.iakonline.com/myproject)

# EIGHT

## **Reducing Energy Consumption Begins in The Kitchen Energy Efficient Kitchen Appliances**

.....

In most homes today, more energy is used in the kitchen than in any other room. So, if you're committed to reducing energy consumption in your home, you'll want to take a closer look at your kitchen and more specifically, your choice of kitchen appliance.

Choosing energy efficient appliances, designed to do more in less time, whilst using less energy is critical. The good news is that internationally renowned brands such as AEG, AGA, Electrolux and Rangemaster offer a range of clever, innovative and inherently efficient A-rated kitchen appliances that allow you to do just that.





[www.iakonline.com/myproject](http://www.iakonline.com/myproject)

# NINE

## **Choosing a Range Cooker? Choose an AGA Designed for Modern Homes and Modern Living. AGA Range Cookers**



AGA Total Control is the AGA that turns everything you thought you knew about the world's finest range cookers on its head.

It's powered solely by electric, not oil or gas. It manages to pack 3 large capacity ovens into a 1 metre space and, can be specified with no fewer than 5. Simmering and boiling plates reach temperature in minutes, not hours. Individual ovens and hotplates can be on when you need them and off when you don't. It's available with a matching cooker hood. With more heat locked away in its cast iron core, it emits less heat into the kitchen, making it ideal for modern, highly insulated homes. And very shortly, you'll even be able to control it from your phone or tablet too.

But perhaps best of all however, whilst AGA Total Control models have the lowest running costs of any full size, AGA cast-iron range cooker, they're instantly recognisable as an AGA.



.....  
[www.iakonline.com/myproject](http://www.iakonline.com/myproject)



# TEN

## **Good Hygiene Begins in the Bathroom** **Villeroy & Boch Sanitary ware**

.....

No matter how well you clean a traditional toilet pan, you can never be too sure what's lurking under the rim. That's why Villeroy & Boch developed semi-rimless toilets. Because all areas can be easily reached, there's no hiding for bugs and germs. Plus, their simple, straightforward design makes them easier to clean and maintain too.

And for even greater reassurance, why not choose Villeroy & Boch Ceramic Plus? This special glaze utilises innovative surface technology with hydrophobic (water-repellent) and oleophobe (oil and grease-repellent) properties. The result is a surface upon which repels water and liquid waste, making it inherently more hygienic and easier to clean.



[www.iakonline.com/myproject](http://www.iakonline.com/myproject)

# ELEVEN

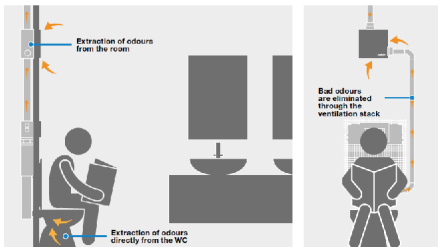
## **Maximise Bathroom Space with Wall Hung Sanitary ware Villeroy & Boch**

.....

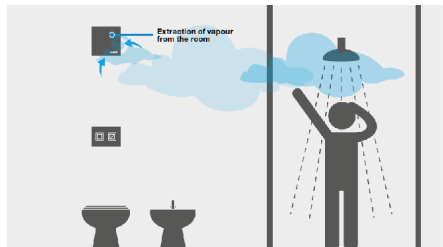
There's no doubt that Villeroy & Boch wall hung sanitary ware looks great in any bathroom. But there's much more to wall hung sanitary ware than good looks and clean, crisp design.

Because they are wall mounted and not floor mounted, they're easier to clean and maintain. There are no nooks and crannies in which bugs, germs, dust and dirt can lurk. There's no sealant on the floor to degrade and dis-colour with the passage of time. And you can clean around the toilet with ease.

The absence of a visible cistern, also allows wall-hung toilets to be placed closer to adjacent furniture, sanitary ware and shower enclosures too – allowing you to make the most of the space inside your bathroom.



Extraction for private WCs



Extraction of water vapour

# TWELVE

## **Remove Toilet Odours at Source for A Fresher, More Hygienic Bathroom - Valsir Ariapur**

.....

Today's building regulations require homes to be significantly more airtight than previously, which makes effective ventilation an important system within any modern home. Nowhere is this more important than in the bathroom, where toilet smells and odours can otherwise prove an unpleasant and persistent problem.

Ariapur's toilet pan extraction system is designed to overcome issues with toilet odours. The system removes odours directly from the pan and expels them to atmosphere, leaving behind a cleaner-smelling, fresher and more hygienic Bathroom. The system can also be upgraded to remove steam, odours and smells from the entire bathroom.



# THIRTEEN

## **Even Hard to Reach Areas Are Never Out of Reach Saniflo Pumps and Macerators**

.....

Modern homes are more complex than ever before. They have more services than ever before. And that's where Saniflo's range of small bore pumps and macerators can help. Powered by a single phase 230v AC supply, they can move water and waste up, down and sideways, allowing you to position bathrooms, wet rooms, en-suites and cloakrooms where you want them and exactly how you want them. Indeed, they're so flexible, they can even transfer waste from a bathroom underground to drainage above.





# FOURTEEN

## **100% Water Proof Wet Room Guaranteed. Wedi Backer Boards**

.....

Wedi Building Boards can help you achieve 100% guaranteed, fully tanked, bathrooms, wet rooms and shower enclosures. They can be applied to almost any substrate and are waterproof, versatile, light and robust.

Manufactured from CFC-free extruded polystyrene rigid foam, Wedi Backer Board have excellent insulation properties and can be easily sealed using a suitable Wedi adhesive. They can be easily cut to size using a suitable jig-saw or sabre saw. And because they feature a cemented surface, they make an excellent base for tiles and WBP board too.



.....  
[www.iakonline.com/myproject](http://www.iakonline.com/myproject)

# FIFTEEN

## **Choose A Grout Free, Mess Free, Alternative to Tiles Selkie**

.....

Selkie Waterproof and Boil proof (WBP) Board doesn't just look great but is a viable alternative to tiling. Compared with tiling, using Selkie reduces installation time, drying time and labour costs. And because it eliminates the requirement for wet-trades in the bathroom, it helps reduce total build time too... so you can get into your new home and your new bathroom sooner.



# SIXTEEN

## **PLAN for The Future** **Keuco Barrier Free Bathrooms**

.....

Beautifully crafted in Germany by Keuco, the PLAN range consists of bathroom fittings and accessories, especially designed for those with additional and changing needs. The design-led range is designed around the concept of a 'Bathroom without Barriers' and discretely accommodates additional and changing needs without compromising form or function.

So, whilst you can't predict the future, thanks to Keuco, you can PLAN for it.



# SEVENTEEN

## **Solar Energy For When The Sun Doesn't Shine** **Solar Panel N.I.**

.....

Free, green and clean, it makes sense to integrate solar energy into new homes. But what happens when the sun doesn't shine?

To take solar energy further, Solar Panel NI have developed a clever, battery storage system. Solar energy which would otherwise go unused is stored inside a battery, for use at a time that suits you. So just because the sun isn't shining, doesn't mean you can't make the most of a cleaner, greener and more affordable source of electricity.





# EIGHTEEN

## **Kudos Timber Frames save you money and hassle**

### **Kudos**



Using the finest timber frame technologies to create high performance, low energy properties on time and on budget.

Working with self builders (with or without plans), an architect or a developer working on high-end one off homes or small developments, we can tailor our three tiered service to suit your exact needs:

- Supplying and installing the precision engineered timber frame core.
- Timber frame plus insulation and airtightness.
- Full build, from design right through to turnkey delivery.

Kudos timber frames are sustainable, low carbon, structurally sound and highly versatile. They offer very high levels of thermal efficiency and when extra insulation and air tightness measures are added, you will find it easy to meet and surpass even the most strict building regulations.

# Kernohan

## DISTRIBUTION

Ian A. Kernohan Ltd.

**Kernohan Distribution is a leading independent distributor of electrical, heating, plumbing and bathroom products.**

**Today, we represent over 30 different brands you know and trust, including AEG, AGA, Heta, Saniflo, Schiedel Rite-Vent and Villeroy & Boch.**

For over 40 years, we've worked closely with our merchant partners to deliver quality, innovative products to self-builders across Northern Ireland. Our Technology Centre in Conlig, Co. Down, allows you to see at first hand the difference the new building, construction and electrical technologies we supply can make to your home.

### **Building or Improving Your Home?**

Whether you're building a new home or upgrading an existing home, we can help make your plans reality and help you create the home of your dreams. On display, you'll find a wide range of clever, innovative products, all designed for modern living. Our themed discovery areas include:

- Energy Saving Kitchen and Domestic Appliances;
- Home Ventilation Systems including Mechanical Ventilation with Heat Recovery (MVHR) Systems;
- Wood Burning Stoves, Pellet Stoves and Gas Fires;
- Bathing, Sanitary and Wellness Products;
- Acoustic Drainage Systems;
- Flue Systems and Chimneys;
- Heating Solutions;
- Technical Walls.



## Free Project Guidance, Training and Advice

As well as being able to familiarise yourself the very latest home technologies, there's the opportunity to benefit from:

- Expert, guidance and advice;
- Hands-on product training;
- Regular trade education events, led by experienced industry professionals.

Kernohan Technology Centre is located near Conlig, Co. Down – between Bangor and Newtownards – and less than a 25-minute drive from Belfast.

### **Kernohan Technology Centre**

Ian A. Kernohan Ltd.

'Fir Trees' Greenway Industrial Estate, Conlig, BT32 7SU

Tel: 028 9127 0233 - Reservations with John Switzer

There's free car-parking on-site and the centre is fully accessible to suit those with additional needs.

**Our facility is open to all. However, with strong demand, pre-booking is essential. To make an appointment please visit:**

**[www.iakonline.com/myproject](http://www.iakonline.com/myproject)**

## Why Not Bring Along Your Tradespeople Too?

We recognise that self-build and home improvement projects require a wide range of trades. So why not arrange to bring along your architect, builder, electrician and/or plumber too?



**FIND OUT  
MORE**

[www.iakonline.com/myproject](http://www.iakonline.com/myproject)