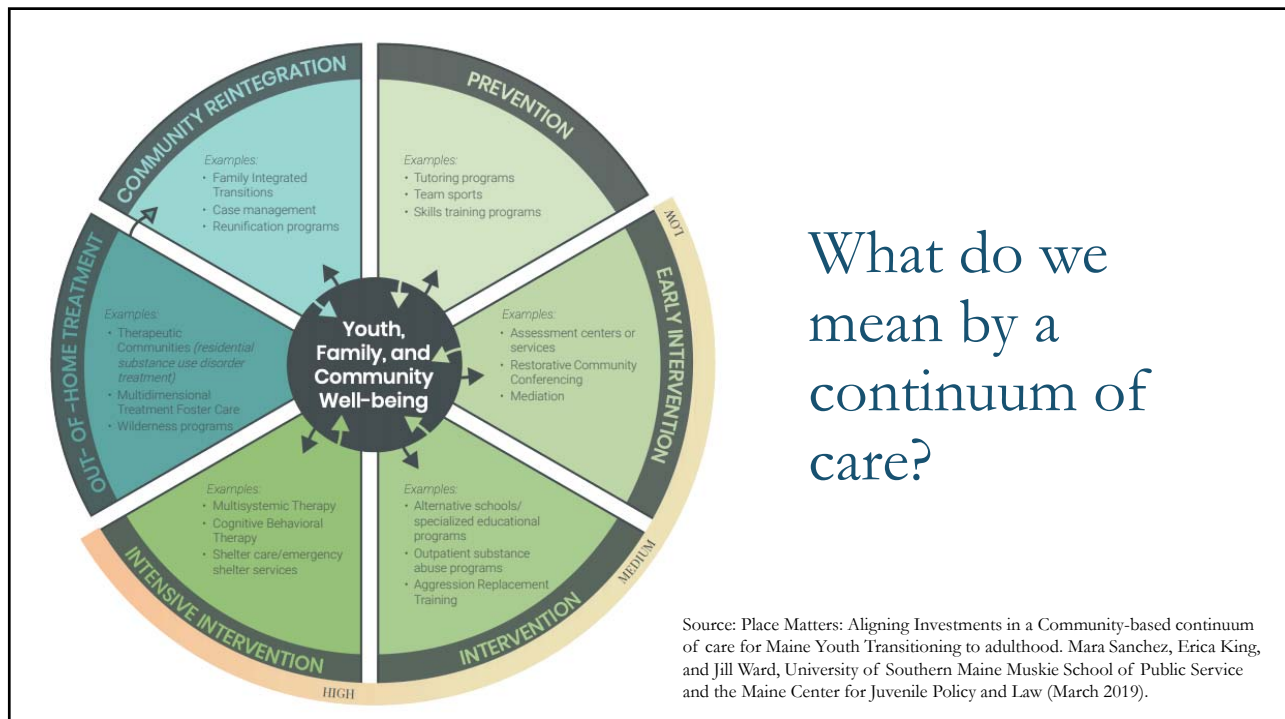


## Maine Juvenile Justice System Assessment & Reinvestment Task Force

October 29, 2019



## Key Questions

- What do we know about **statewide** challenges and barriers to creating an environment where we can have an effective continuum of care for the State of Maine?
  - Resource allocation
  - Policies and practices
- How can we support **communities** in their development of their own relevant and responsive continuums of care for youth and families?
  - Resourcing communities directly to support individualized continuums
  - Attention to geography
  - Responsiveness to race, ethnicity, tribal affiliation, gender, disability, LGBTQ status

## Statewide Challenges: Key Themes

- Resource Allocation
  - Inadequate investments in behavioral health care for children and youth
  - Wait lists for community-based programs and interventions
  - Lack of supports for families in crisis and youth without engaged caregivers
  - Investment in costly secure care for youth with “no other place to go”
- Policies and Practices
  - Need for intentional multi-agency collaborations and approaches to vulnerable youth and families focusing on meeting underlying needs vs. responding to behavior/charge
  - Need for greater restrictions on school push-out
  - Absence of “no reject, no eject” policies for youth in programs
  - Lack of limits on lengths of stay for secure placement, community supervision

## Community-Based Challenges: Key Themes

- Resourcing communities directly to support individualized continuums in individual communities
  - Lack of county infrastructure that is the vehicle for other states' reinvestment initiatives
- Navigating challenges with geography
  - Agreeing upon resource allocation in northern Maine and rural parts of the state to prevent justice by geography
- Responsiveness to race, ethnicity, tribal affiliation, gender, disability, LGBTQ status
  - Ensuring community-based continuums and child-serving agencies are accountable and responsive to needs of each group

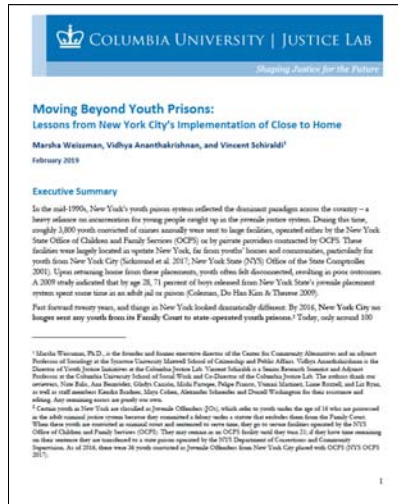
## Helpful Resources for Task Force Members



- Best single publication on funding strategies to support community-based continuums of care
  - Strategies for reinvesting youth justice system resources
  - Ways of leveraging existing state and federal funding streams
  - Options for creating new sources of funding to support programming in communities

<https://urbn.is/31S6YLC>

# Helpful Resources for Task Force Members



- Detailed information on how New York City and New York State developed a continuum of care to support youth and families in the community

- Detailed information on the continuum of care that makes Close to Home possible
- Step-by-step outline of steps taken to transform the youth justice system
- Key takeaways for other jurisdictions

<https://justicelab.columbia.edu/moving-beyond-youth-prisons>