



American Sprinkler

34567 Glendale
Livonia, MI 48150
(734) 458-7005
(734) 458-7011 Fax

Dear Valued Client,

Today American Sprinkler winterized your sprinkler system.

Our service is guaranteed against damage due to freezing if your winterization is complete before our first day of sub freezing temperature (this normally occurs between Oct 30 and Nov 15) We will take responsibility for and pay for any repairs that are necessary because of water freezing in the pipes etc. This warranty is valid only if the following instructions are followed carefully.

IMPORTANT - READ CAREFULLY!

1. If you or American Sprinkler haven't already done so, **turn off** your main sprinkler valve in the basement (Figure A)
2. Open the drain in the basement (Figure A) (most systems should have a drain *or* some sort between the shutoff valve and the outside wall). Drain the water into a pail and leave the drain *open* during the winter.
3. Check your vacuum breaker on the outside. All levers should be at a 45 degree angle. (Figure B) If your vacuum breaker has round handles on the valves instead of levers (Figure C), make sure they are turned in all the way (clockwise). If you have a faucet or drain on the outside pipe (Figure A), leave this open also.

ALL CUSTOMERS- VERY IMPORTANT!!

Approximately one week after we do your winterization, please check your drain (or faucet) in the basement and/or on the outside. *If there is any water dripping out of these, this means that your main shut off valve is leaking water back into the system and must be replaced!*

It is vital that all of these instructions are followed to avoid freeze damage. We cannot be responsible for damage if these instructions are not carried out

SPRING START UP INSTRUCTIONS

In the spring, you can have us turn your system back On and check for proper operation. If you wish to turn on your own system, you must do the following:

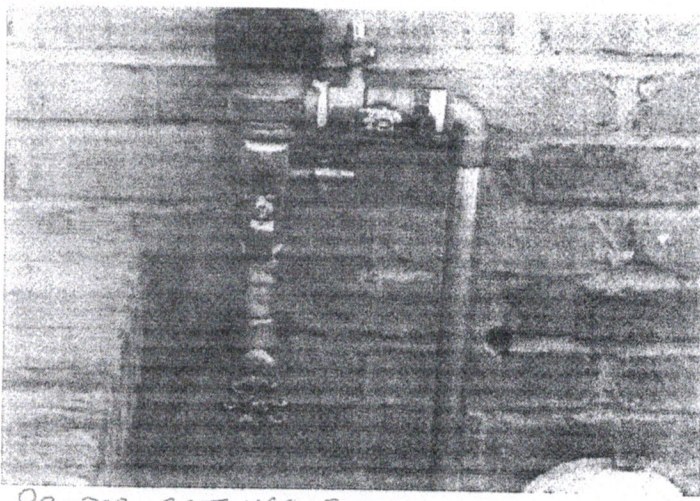
1. Close the drain in the basement and/or on the outside (Figure A). Close the small test port valves on your vacuum breaker. (Figure B these valves that stick out the side of the vacuum breaker, are closed by turning the screw on the side of them)
2. Open the main sprinkler valve in the basement (Figure A). You should hear a rush of water.
3. Open the two large valves on the vacuum breaker outside (Figure B or C) (some older systems will not have valves on the outside). To open, turn these valves fully **counter clockwise**. Your system's main line is now recharged with water.
4. Re-program your controller as desired and run through each zone to make sure everything is operating properly. While each zone is on, check the heads individually to make sure the grass and grass roots are cleared away from the top of the head, and that the heads are adjusted and spraying properly.

If you need any service or repairs, please call us at the number listed above. Group Rates are available for winterizations. Call us for details.

THANK YOU FOR LETTING US SERVE YOU!!!

Sincerely:

Jeff Borneman President
American Sprinkler



PROPER SETTINGS FOR SUMMER TIME

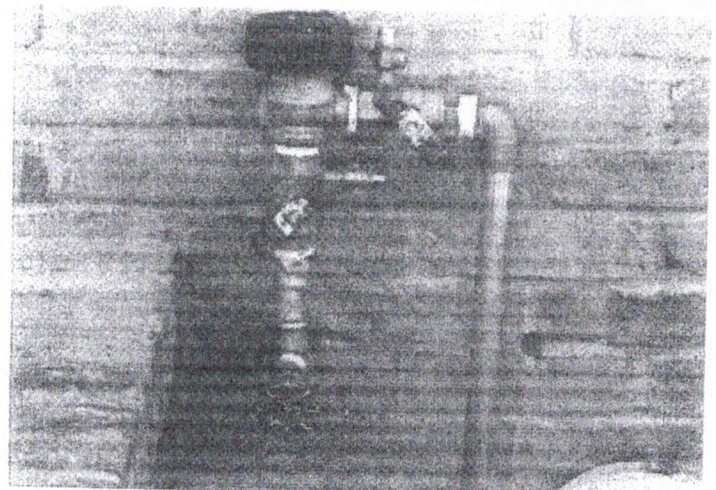
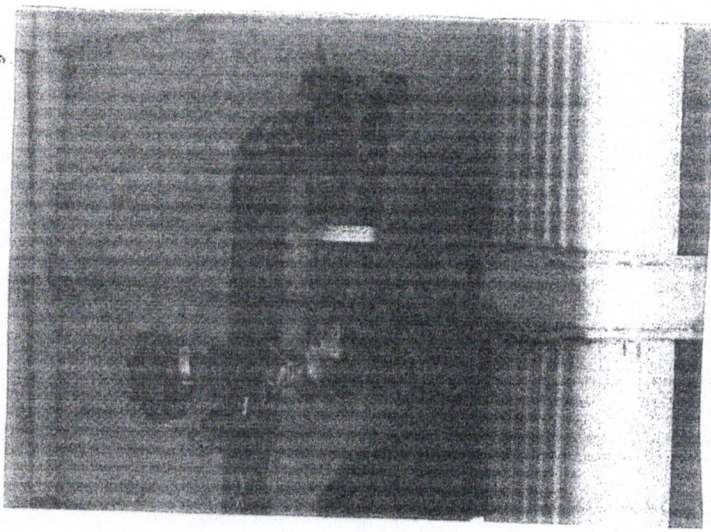


FIGURE B - PROPERLY SET VALVES FOR WINTER LEAVE FAUCET IN OPEN POSITION



ATMOSPHERIC BREAKER - NO VALVES TO SET OPEN FAUCET FOR WINTER

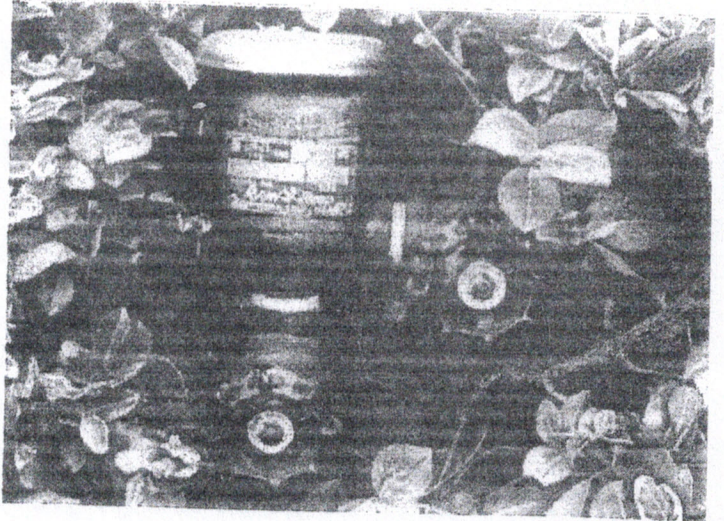


FIGURE C

