

DSK

ANGUS & CHAROLAIS

22ND ANNUAL BULL SALE

38 Angus bulls

30 Charolais bulls



Gunnedah Saleyards
1^{pm} Thu 13th Aug 2015

DSK Angus & Charolais

Cows - Bulls - Steers - Carcasses - Taste Test

Complete Beef Production



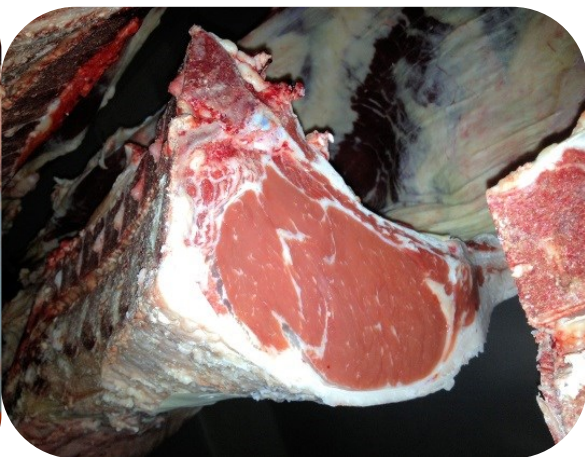
Sire: Kansas G198

DSK KG J106 - 100% Angus,
Milk Tooth 572kg l/w,
57% dressing % 15 / 7 fats,
110sq/cm rib eye.
100 days on feed.

Reserve Champion Heavyweight
Carcase Sydney Royal 2015 & Gold
Medal 93 point carcase score just

0.5 point behind the Grand Champion carcase at 93.5 points

Sired by DSK herd sire Kansas G198.



Sire: Gunnadoo Xception

DSK GX 51G - 100% Charolais, Milk Tooth, 594kg, 60.6% dressing %, 110 days on feed, 12/7
fats, 115sq/cm rib eye. Grand Champion Carcase Gold Medal Winner Sydney Royal Show 2013



2013 Middleweight Champion Steer
Sydney Royal Show DSK 50G

2015 Middleweight Reserve Champion
Steer Sydney Royal Show DSK K24E

2014 Middleweight Champion Steer
Sydney Royal Show DSK H111E



Sire: Gunnadoo Xception



Sire: SVY Pilgrim



Sire: DSK Express E75E

DSK

Angus & Charolais Studs

22nd Annual Bull Sale

68 Performance Recorded Bulls

Selling Agents Landmark Gunnedah Ph: (02) 6742 3899 or Scott Cooper: 0427 674 411

Email: scott.cooper@landmark.com.au

Email: andrew.wishart@landmark.com.au

Auctioneer; Andrew Wishart, Landmark Stud Stock Ph: 0407 424 706

Purtle Plevy Agencies Pty Ltd Patrick Purtle; 0428851704 Samuel Plevy; 0427856223

Email: samuel.plevy@purtleplevey.com.au

Email: Patrick.purtle@purtleplevey.com.au

Vendors: Chris Knox & Helen Alexander

Ph: (02) 6842 9101 Mobile: 0427 600 278

"Borah Station" Borah Creek Rd, Rocky Glen via Coonabarabran NSW 2357

E : dskangusandcharolais@westnet.com.au

Web: www.dskangusandcharolais@westnet.com.au



All of us as beef producers are in uncharted waters as far as demand and high prices now being achieved in all sectors of beef marketing and sales.

What a difference 12 months makes with last year having to book cattle for slaughter months 6 to 8 weeks in advance with no fixed grid price, to the present time with buyers in solid competition to secure cattle. The result being cattle bringing close to double the 2014 rate. It was needed as best prices have been stagnating for several years but now beef producers can progress and develop at the current market prices and with the global demand high, I think we can be assured it will remain for some years to come.

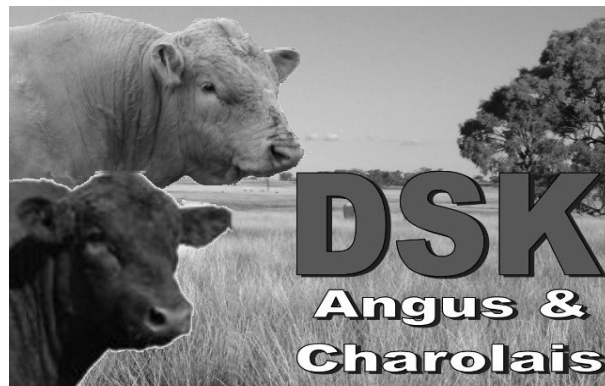
Our draft of bulls in this 2015 sale I am sure will go out and breed progeny that will help clients capitalize on this upturn in beef prices. This year's draft have really endured tough times, being born into the 2013 summer which was the toughest we have had where we were feeding everything to survive resulting in our lowest weaning weights that we have ever recorded. The 2014 summer was not much better with limited crop and light supplementation feeding of silage and 20% grain ration that the bulls were given daily to maintain and grow in their important developmental stages. The bulls have responded well going onto oats on 5th June until sale time with great response and big daily weight gains and EMA and scrotal development.

The "A" team as we call them (the top prospects) have had that constant plane of nutrition and have excelled with bulls weighing in excess of 900kg proving the high performing genetics that we strive for.

The Angus draft will include an exciting draft of Rachis bulls that have proven to be popular over the previous sales and daughters are top producing females. Our first ever draft from calving ease sire Kansas G198 go under the hammer. G198 sired the highest scoring Angus carcass at Sydney Royal steer show this year scoring 93 points which was just half a point behind the Grand Champion carcass and was awarded the Reserve Heavyweight Champion carcass and Gold Medal.

The Charolais draft consists of quality, well muscled, easy doing bulls with the majority being polled. Evident in the draft is our breeding policy of maintaining muscle with smooth shoulders while maintaining frame size and performance. At DSK we prove our Charolais with a short grain finishing program and achieve excellent grading results and returns especially on our heifer portion.

We extend a warm welcome on sale day and encourage you to please give us a visit to inspect the draft on Borah in their natural environment.



Looking After Your New Bull & How Hard Should He Work?

Taking care of your new bull after purchase should be viewed as caring for your future genetic and financial investment. How you care for your bull in his first season can affect the long term contribution that your new genetic package will make for your herd. You will find all the pre sale feeding and health information on these sale bulls in this catalogue. Your DSK bull is fully checked, vaccinated and ready to go to work for you. But do you know just how much work he should be able to handle?

Bulls have different maturity stages but as a general rule, DSK bulls are later developers and will continue to grow well into their 3rd year of age. While a bull is still growing and developing and at the same time serving cows and maybe fighting for dominance in a multiple joining situation, he is using much more energy than a bull that has already matured. It is very important to make sure that your new bull in his first season is not overworked and underfed. This will not only affect his ability to serve cows and produce live semen, but it will have a major impact on his growth pattern to maturity which can cost you big bucks when you go to trade that bull in at the end of his working life and sell him by the kilo. Take your bull home and settle him in for a few days with a few quiet pregnant cows, then either introduce him into his joining mob or settle him into the sires paddock. If you put him into a group of older bulls, he will be at the very bottom of the pecking order and be in danger of serious injury before you have even used him. Make sure that this paddock is large enough that bulls can retire to their own corners when they feel like they have had enough fighting. Most bulls know when it is advisable to leave a losing battle, but they need somewhere to run to. We advise that you insure your new bull for at least the first season in case of injury.

At DSK we recommend the use of single sire mating as a means of reducing injury to your bulls and also a great way of sire identifying your cattle to know which sire lines are doing the best job for your operation. Many feedlotters and prime cattle buyers prefer cattle that are sire identified. This situation can also keep your joining season short and compact. It is important that you keep mobs in a paddock that a single bull can cover, ie, he can see, smell or hear what is happening in his paddock so he doesn't miss cycling cows in small groups. It is a good idea to have a single watering point per paddock, this keeps the mob together and gives your bull easy access to cycling groups of cows. Unfortunately with single sire mating you run the risk of unforeseen infertility in your bulls. It is most important to use bulls that have been semen tested for 70% minimum live sperm, including your older bulls, and make sure that both bulls and females have had all the necessary health vaccinations and are in a condition good enough to be able to fall pregnant while milking for a calf. Check your bull at least twice a week for any lameness or swelling around the sheath or testicles and it is a good idea to try and catch your bull mating a cow to check for penis damage or abnormal serving problems such as "corkscrew penis" where the penis is twisted making mating much more difficult if not impossible.

The Australian Association of Cattle Veterinarians defines a normal, fertile bull as "expected to get 90% of 50 normal, cycling, disease free females pregnant within 9 weeks, and 60% of these should become pregnant in the first three weeks of joining." This expectation would apply to 2 year old bulls but not to younger bulls. Mating loads of 25 to 30 females with a frame score that the bull can easily mount are recommended for yearling bulls in a smaller paddock with good feed and water. Try and cut their joining season down to 6 or 8 weeks and pull them out into a good nutrition paddock or hand feed them to allow them to recover body condition and maintain strong growth. The condition of younger bulls is critical for their sperm production and it is recommended that they not be allowed to drop in condition below a fat score 3 during service.

We recommend strongly that you have a backup bull in case of injury or infertility, allow yourself an extra bull in your sire line up. You may even find that lessening your joining mobs in a few cases allows you to have that extra bull out working each season but doesn't over work a few of your bulls so that you can then use one or more of these as a backup bull if you find you need it.

Sire Selection with Chris Knox

Not every beef producer needs the same style of beef sire. This comes about from the wide diversity in our Australian beef markets and the vast difference in operations due to environmental, climate and location. These factors are the reason why we have variations of type and maturity patterns within breeds and individual herds. This variation in type is a widely used tool in the seed stock industry to adjust our breeding programmes as time moves forward. For example, if you want to keep breeding frame 6 cattle, you can't keep buying frame 6 bulls, every now and then you need to increase your frame score to compensate for a reduction of cow frame over time. We can use the wide variety of genetics and types on offer for the improvement of a single trait or multiple traits. Artificial insemination is a tremendous aid in this way where you can use a tremendous line up of influential individual sires from Australia and overseas to supplement your breeding programmes and widen our national genetic pool. This is why most drafts of sale bulls have a variation within the groups regardless of type of cattle or priorities on particular traits a stud breeder might be working towards in his programme.

Our operation at DSK strives to produce a larger framed animal with good muscle content and fleshing and having an easy finishing ability on a high yielding carcase which maintains a strong commercial focus and in turn will give our bull clients increased profitability throughout their own herds. You will find a variation of type in our sale draft and we feel sure the you will find that bull that will suit your individual need. We encourage clients to discuss your breeding programmes and operations with us so that we may help you to make the right selection for your future marketing options.

RECESSIVE GENETIC CONDITIONS

Where a single pair of genes controls a trait or condition it is referred to as a simple recessive trait or condition. There may be several forms of the same gene eg black (dominant) and red (recessive) for the colour gene in Angus. These gene forms are called alleles. Two copies of the recessive allele need to be present in an animal for it to be expressed. Both the sire and dam need to be a carrier (have one copy each) to have progeny that have two copies of the recessive allele.

Arthrogryposis Multiplex (AM), Neuropathic Hydrocephalus (NH) and red colour are examples of recessive conditions and traits in the Angus breed. In animals with only one copy of the recessive allele (and one copy of the dominant allele), the recessive allele isn't expressed and the animal is known as a "carrier" for the unexpressed trait or condition.

What happens when carriers are mated to other animals?

A carrier, will on average, pass the recessive allele to a random half (50 %) of its progeny. When a carrier bull and carrier cow is mated, there should be a 25% chance that the progeny produced will have two dominant alleles and so will never pass on the undesirable allele. There should be a 50% chance that the mating will produce a carrier. However, there could be a 25% chance that the progeny have two copies of the recessive allele. If animals free of the recessive allele are mated to carrier animals the recessive trait or condition will not be expressed at all. Approximately half (50%) of the progeny could be expected to be carriers while the other half are expected to be free.

Recessive gene status reporting

Where a DNA test can be used to determine whether an animal is a carrier or free of the recessive gene the status of animals is being reported using five categories. For example, for the AM condition:

AMF Tested AM free – have zero copies of the recessive allele

AMFU Expected to be AM free - based on pedigree analysis

AM__% __% probability that the animal may be an AM carrier

AMC Tested AM carrier – have one copy of the recessive allele

AMA AM-Affected – have two copies of the recessive allele

RDC is a tested red coat colour gene carrier and RDF is tested as red coat colour gene free.

Registration certificates and the Angus Australia web-database will display these codes. This information can be accessed by conducting a "Database Search" from the Angus website and clicking on the "Genetic Test Results" link on the animal details page. The status of untested animals is subject to change and will be re-analysed and adjusted each week as DNA test results of relatives are

Breedplan Averages for 2015

Breed Avg. EBVs for 2013 Born Calves June 2015 Australasian Charolais GROUP BREEDPLAN																	
Calving	Calving		Birth	200	400	600	Mat.	Milk	Scrotal			Carcase	Eye	Rib	Rump	Retail	IMF
Ease	Ease	Gestation	Wt.	Day	Day	Day	Cow	(kg)	Size			Wt.	Muscle	Fat	Fat	Beef	(%)
DIR (%)	DTRS	Length	(kg)	Wt.	Wt.	Wt.	Wt.		(cm)			Wt.	Area	(mm)	(mm)	Yield	
	(%)	(days)		(kg)	(kg)	(kg)	(kg)					(kg)	(sq.cm)			(%)	
1	0.9	-2.2	0.5	11	22	30	33	6	1			18	1.5	0.2	0.3	0.2	0.2
Breed Avg. EBVs for 2013 Born Calves July 2015 Angus Australia BREEDPLAN																	
Calving	Calving		Birth	200	400	600	Mat.	Milk	Scrotal	Days		Carcase	Eye	Rib	Rump	Retail	IMF
Ease	Ease	Gestation	Wt.	Day	Day	Day	Cow	(kg)	Size	To		Wt.	Muscle	Fat	Fat	Beef	(%)
DIR (%)	DTRS	Length	(kg)	Wt.	Wt.	Wt.	Wt.		(cm)	Calving		Wt.	Area	(mm)	(mm)	Yield	
	(%)	(days)		(kg)	(kg)	(kg)	(kg)					(kg)	(sq.cm)			(%)	
-0.3	0	-3.3	4.4	40	74	96	86	14	1.6	-3.5		54	4.2	-0.1	-0.1	0.3	1.5

ANGUS & CHAROLAIS BREEDPLAN Understanding EBVs and Accuracy

An animal's breeding value is its genetic merit, half of which will be passed on to its progeny. While we will never know the exact breeding value, for performance traits it is possible to make good estimates. These estimates are called Estimated Breeding Values (EBVs).

In the calculation of EBVs, the performance of individual animals within a contemporary group is directly compared to the average of other animals in that group. A contemporary group consists of animals of the same sex and age class within a herd, run under the same management conditions and treated equally. Indirect comparisons are made between animals reared in different contemporary groups, through the use of pedigree links between the groups.

EBVs are expressed in the units of measurement for each particular trait. They are shown as + ive or - ive differences between an individual animal's genetics difference and the genetic base to which the animal is compared. For example, a bull with an EBV of +50 kg for 600-Day Weight is estimated to have genetic merit 50 kg above the breed base of 0 kg. Since the breed base is set to an historical benchmark, the average EBVs of animals in each year drop has changed over time as a result of genetic progress within the breed.

The absolute value of any EBV is not critical, but rather the differences in EBVs between animals. Particular animals should be viewed as being "above or below breed average" for a particular trait.

Whilst EBVs provide the best basis for the comparison of the genetic merit of animals reared in different environments and management conditions, they can only be used to compare animals analysed within the same analysis. Consequently, ANGUS BREEDPLAN EBVs cannot be validly compared with EBVs for any other breed.

Although EBVs provide an estimate of an animal's genetic merit for a range of production traits, they do not provide information for all of the traits that must be considered during selection of functional animals. In all situations, EBVs should be used in conjunction with visual assessment for other traits of importance (such as structural soundness, temperament, fertility etc). A recommended practice is to firstly select breeding stock based on EBVs and to then select from this group to ensure that the final selections are otherwise acceptable.

ANGUS & CHAROLAIS BREEDPLAN Understanding EBVs and Accuracy continued.

EBVs are published for a range of traits covering fertility, calving ease, milking ability, growth, carcase merit and feed efficiency. When using EBVs to assist in selection decisions it is important to achieve a balance between the different groups of traits and to place emphasis on those traits that are important to the particular herd, markets and environment. One of the advantages of having a comprehensive range of EBVs is that it is possible to avoid extremes in particular traits and select for animals with balanced overall performance.

Calving Ease EBVs (%) are based on calving difficulty scores, birth weights and gestation length information. More positive EBVs are favourable and indicate easier calving.

CE % Direct = Direct Calving Ease - The EBV for direct calving ease indicates the influence of the sire on calving ease in purebred females calving at two years of age.

CE % Daughters = Daughters' Calving Ease - The EBV for daughters' calving ease indicates how easily that sire's daughters will calve at two years of age.

Gestation Length EBV (days) is an estimate of the time from conception to the birth of the calf and is based on AI and hand mating records. Lower (negative) GL EBVs indicate shorter gestation length and therefore easier calving and increased growth after birth.

Birth Weight EBV (kg) is based on the measured birth weight of progeny, adjusted for dam age. The lower the value the lighter the calf at birth and the lower the likelihood of a difficult birth. This is particularly important when selecting sires for use over heifers.

200-Day Growth EBV (kg) is calculated from the weight of progeny taken between 80 and 300 days of age. Values are adjusted to 200 days and for age of dam. This EBV is the best single estimate of an animal's genetic merit for growth to early ages.

400-Day Weight EBV (kg) is calculated from the weight of progeny taken between 301 and 500 days of age, adjusted to 400 days and for age of dam. This EBV is the best single estimate of an animal's genetic merit for yearling weight.

600-Day Weight EBV (kg) is calculated from the weight of progeny taken between 501 and 900 days of age, adjusted to 600 days and for age of dam. This EBV is the best single estimate of an animal's genetic merit for growth beyond yearling age.

Mature Cow Weight EBV (kg) is based on the cow weight when the calf is weighed for weaning, adjusted to 5 years of age. This EBV is an estimate of the genetic difference in cow weight at 5 years of age and is an indicator of growth at later ages and potential feed maintenance requirements of the females in the breeding herd. Steer breeders wishing to grow animals out to a larger weight may also use the Mature Cow Weight EBV.

Milk EBV (kg) is an estimate of an animal's milking ability. For sires, this EBV indicates the effect of the daughter's milking ability, inherited from the sire, on the 200-day weights of her calves. For dams, it indicates her milking ability.

Scrotal Size EBV (cm) is calculated from the circumference of the scrotum taken between 300 and 700 days of age and adjusted to 400 days of age. This EBV is an estimate of an animal's genetic merit for scrotal size. There is also a small negative correlation with age of puberty in female progeny and therefore selection for increased scrotal size will result in reduced age at calving of female progeny.

Days to Calving EBV (days) indicates the fertility of the daughters of the sire. It is the time interval between the day when the female is first exposed to a bull in a paddock mating to the day when she subsequently calves. A negative EBV for days to calving indicates a shorter interval from bull-in date to calving and therefore higher fertility.

Carcase Weight EBV (kg) is based on abattoir carcase records and is an indicator of the genetic differences in carcase weight at the standard age of 650 days.

Eye Muscle Area EBV (sq cm) is calculated from measurements from live animal ultrasound scans and from abattoir carcase data, adjusted to a standard 300 kg carcase. This EBV estimates genetic differences in eye muscle area at the 12/13th rib site of a 300 kg dressed carcase. More positive EBVs indicate better muscling on animals. Sires with relatively higher EMA EBVs are expected to produce better-muscled and higher percentage yielding progeny at the same carcase weight than will sires with lower EMA EBVs.

Rib Fat and Rump Fat EBVs (mm) are calculated from measurements of subcutaneous fat depth at the 12/13-rib site and the P8 rump site (from live animal ultrasound scans and from abattoir carcasses) and are adjusted to a standard 300 kg carcase. These EBVs are indicators of the genetic differences in fat distribution on a standard 300 kg carcase. Sires with low, or negative, fat EBVs are expected to produce leaner progeny at any particular carcase weight than will sires with higher EBVs.

Retail Beef Yield EBV (%) indicates genetic differences between animals for retail yield percentage in a standard 300 kg carcase. Sires with larger EBVs are expected to produce progeny with higher yielding carcasses.

Intramuscular Fat EBV (%) is an estimate of the genetic difference in the percentage of intramuscular fat at the 12/13th rib site in a 300 kg carcase. Depending on market targets, larger more positive values are generally more favourable.

Accuracy

Accuracy (%) is based on the amount of performance information available on the animal and its close relatives - particularly the number of progeny analysed. Accuracy is also based on the heritability of the trait and the genetic correlations with other recorded traits. Hence accuracy indicates the "confidence level" of the EBV. The higher the accuracy value the lower the likelihood of change in the animal's EBV as more information is analysed for that animal or its relatives. Even though an EBV with a low accuracy may change in the future, it is still the best estimate of an animal's genetic merit for that trait. As more information becomes available, an EBV is just as likely to increase in value, as it is to decrease. Accuracy values range from 0-99%. The following guide is given for interpreting accuracy:

As a rule, animals should be compared on EBVs regardless of accuracy. However, where two animals have similar EBVs the one with higher accuracy could be the safer choice, assuming other factors are equal.

For further information please contact Angus Australia or Angus BREEDPLAN or the Charolais Society or Charolais BREEDPLAN.

Accuracy range	Interpretation
less than 50%	Low accuracy. EBVs are preliminary and could change substantially as more performance information becomes available.
50-74%	Medium accuracy, usually based on the animal's own records and pedigree.
75-90%	Medium-high accuracy. Some progeny information included. EBVs may change with addition of more progeny data.
more than 90%	High accuracy estimate of the animal's true breeding value.

Sale Information

- Sale Location:** Please note the sale will be held at the Gunnedah Saleyards, Boggabri Road, Gunnedah, NSW.
- Sale will start 1pm, Thu. 13th August. Please bring this catalogue with you to the sale to be sure of having one.**
- Inspections:** All bulls will be penned at the Gunnedah Saleyards by 10am sale day. Private inspections are welcomed and can be arranged prior to sale day at Borah Station, Rocky Glen by calling either the vendors or the sale agents.
- Supplementary Sheets:** Current weights, scans and scrotal measures will be available on sale day along with any catalogue alterations or withdrawals. Be sure to get one when you arrive.
- Insurance:** Purchaser to arrange insurance cover where required. There will be representatives available on sale day to take care of your livestock insurance needs or contact the selling agents to arrange this for you.
- The Vendors and their agents take all care but no responsibility for purchases after the sale has been made.**
- Rebate:** A 2% rebate will be payable to outside agents on condition that they either attend the sale and introduce themselves to the selling agents, or who nominate potential purchasers in **writing prior to 5pm on Wed 12th August** with the selling agents. **Agent rebate is conditional upon full settlement of account within 7 days of sale.**
- Transport:** The Purchaser will be fully responsible for the safe delivery of their purchases. Bull groups are noted in the individual lot information in this catalogue and will be also provided on the supplementary sheet. It is advised that if bulls of different groups have to be transported together that they are where possible separated into different pens or if that is not possible, packing as tightly as can be arranged leaves less room for fights while traveling.
The selling agents will act as transport co-ordinators so please do not leave the sale before arranging transport with them. Scott Cooper 0427674411; Patrick Purtle 0428851704; Sam Plevy 0427856223
- Bid Card System:** The sale will be conducted under the bid card auction system with all standard terms and conditions of sale as stated by the NSW Livestock Agents Association and all potential buyers are required to resister all relevant details with the selling agents prior to purchase and a delivery and instruction sheet upon completion of the sale for all purchases. No verbal delivery instructions can be accepted and written instructions must have full contact details of delivery location along with legible directions.
- Fertility and Health:** Bulls have been fully vaccinated and are up to date as of 17th July including booster shots with 7in1, Pestigard and Vibrovax. Bulls have been drenched with Eprinex Pour On and semen tested and inspected externally and internal palpation by Bovine fertility specialist, Dr Ced Wise B.V.Sc., M.S., Diplomate ACT, M.A.C.V.Sc. Bulls are in good forward condition and are ready for immediate work. Borah Station is in a Protected area for Bovine Johnes Disease. Lots 5,6,7 and 8 were shown at Sydney Royal 2015 and were lightly foot trimmed in early March and not since. No other bull in this draft has been hoof trimmed at any stage.
- Fertility Guarantee:** Please speak to the vendors within 12 months of sale if you feel you have a fertility problem with you bull. All efforts have been made to ensure your bulls are suitable for work under appropriated conditions. Injuries or infertility due to malnutrition or mistreatment after the sale are the purchasers responsibility.
- Bull Groups and Feeding Programmes:** All bulls apart from Lot 37 (Group 5 bull) have been running on oats since 5th June and a light supplementary feed of barley grain and straw mix fed daily in troughs with ad lib barley straw in the paddock.
- Group 1** bulls are the main mob and have been pasture raised with supplementary oaten silage and barley grain mix fed in troughs daily for 5 months prior to 5th June.
- Group 2** bulls are bulls that have been run as a separate group since weaning and have received the same feeding programme as group 1 but in a smaller mob.
- Group 3** bulls apart from J26E and J27E are the autumn Charolais bulls and the yearling Angus bulls that have been run as a group since April when the August born Angus bulls were weaned. Feeding has been similar to both Group 1 and Group 2 with bulls being trough fed daily with a light barley grain and straw mix and ad lib oaten silage.
- Group 4** bulls were show bulls being taken to Sydney Easter show. On return home before Easter they were eased up and fed a daily grain and straw ration like all other groups with ad lib oaten hay.
- Group 5.** This bull was run with Group 3 bulls until 5th June when he was run with 15 Charolais heifers until 17th July when he was pulled out and kept seperately.
- Disclaimer:** While every care is taken to ensure the safety of all persons and property the vendors and their agents are not liable for any damage or injury caused or contributed to by us or by any other person whether caused or contributed to or by negligence, deliberate act or unlawful conduct. This applies to the owners, agents and their employees of the business activities of CR Knox and HD Alexander. Persons enter the sale pens at their own risk and are discouraged from doing so. Bulls are unpredictable large animals and all care must be taken when handling any livestock.

Bulls will be presented into the ring in groups of 2 or more to try and reduce stress for these animals during the sale.
Vendors reserve the right to present bulls into the sale ring in an order not necessarily as shown in catalogue order.

Lot 1

DSK KG JO BUGS J78

Born: 24/10/2013

Group; 2

ANGUS

HBR

Genetic Status:

Animal ID: NKSJ78

AMFU, NHFU, CA5%, DD3%

CONNEALY ONWARD USA14216491

SITZ UPWARD 307R USA14963730

SITZ HENRIETTA PRIDE 81M USA14087650

Sire: KANSAS UPWARD G198(AI) NKLG198

BON VIEW NEW DESIGN 1407 USA1407

KANSAS ANNIE Y656(AI)(ET) NKLY656

AMAROO EXPO ANNIE U024(AI)(ET) BYEU024

TE MANIA MODEST Z793(AI) VTMZ793

GILMANDYKE DARBY D0107 EUDD0107

NARRANGULLEN EMILLESQUE A294(AI)(ET) NARA294

Dam: DSK GDK FLOWER G124 NKSG124

DSK 465T ACCELARATOR A21(AI)(ET) NKSA21

DSK A21 FLOWER C18 NKSC18

DSK W13 FLOWER Z164 NKSZ164

Excellent temperament here in a powerful muscled, moderate framed bull. Suitable for heifers being a heifers first calf and Darby, 1407 and A21 all used on heifers. Dam, G124 is an extremely docile cow with moderate frame, ton of capacity and an excellent udder. A typical Darby daughter.

CALVING EASE		July 2015 Angus Australia BREEDPLAN															
	CED	DTRS	GL	BW	200	400	600	MCWT	MILK	SS	DTC	CWT	EMA	RIB	RUMP	RBY%	IMF%
EBV	0.8	-1	-	4.3	46	82	113	-	-	1.8	-	-	5.3	-1.2	-1.7	1.1	1.2
Acc	38%	29%	-	67%	54%	51%	53%	-	-	44%	-	-	38%	40%	39%	37%	36%

Traits Observed: CE,BWT,600WT(x2),SS,FAT,EMA,IMF

Purchaser:

Price:

Lot 2

DSK KG JUBE J34

Born: 26/09/2013

Group; 2

ANGUS

HBR

Genetic Status:

Animal ID: NKSJ34

AMFU, NHFU, CAFU, DDFU

CONNEALY ONWARD USA14216491

SITZ UPWARD 307R USA14963730

SITZ HENRIETTA PRIDE 81M USA14087650

Sire: KANSAS UPWARD G198(AI) NKLG198

BON VIEW NEW DESIGN 1407 USA1407

KANSAS ANNIE Y656(AI)(ET) NKLY656

AMAROO EXPO ANNIE U024(AI)(ET) BYEU024

MERRIDALE PACK-N-POWER A46(AI)(ET) CMDA46

DSK PNP D150 NKSD150

PALES U72 ERINETTE X52 NJUX52

Dam: DSK D150 DANDALOO G52 NKSG52

DSK HR XTRA X1(AI)(ET) NKXS1

DSK X1 DANDALOO D101 D104 NKSD104

DSK V6 DANDLOO Y46 NKSY46

Good spread of figures on this G198 son. A heifers first calf. J34 shows the muscle content we expect from G198 progeny. Suitable for heifers.

CALVING EASE		July 2015 Angus Australia BREEDPLAN															
	CED	DTRS	GL	BW	200	400	600	MCWT	MILK	SS	DTC	CWT	EMA	RIB	RUMP	RBY%	IMF%
EBV	1.9	0.5	-	4.6	47	89	126	108	16	0.1	-	67	5	0	-0.3	0.1	1.2
Acc	38%	29%	-	70%	63%	61%	67%	60%	40%	65%	-	51%	48%	48%	51%	45%	41%

Traits Observed: CE,BWT,200WT,600WT(x2),SS,FAT,EMA,IMF

Purchaser:

Price:

Lot 3

DSK T410 JUSTIFY J29(AI)(ET)

Born: 13/09/2013

Group; 2

ANGUS

HBR

Genetic Status:

Animal ID: NKSJ29

AMFU, NHFU, CA50%, DDFU

B/R NEW DESIGN 036 USA036

BON VIEW NEW DESIGN 208 USA208

BON VIEW ERICA 443 USA443

Sire: TC TOTAL 410 USA14844711

TWIN VALLEY PRECISION E161 USA12346200

TC ERICA EILEEN 2047 USA14270867

TC ERICA EILEEN 5116 USA12378867

TE MANIA MODEST M126 VTMM126

ARDROSSAN MODEST W37(AI) NAQW37

ARDROSSAN WILCOOLA U21(AI)(ET) NAQU21

Dam: VERMONT DREAM E287(AI)(ET) CCVE287

ARDROSSAN CONNECTION X15(AI)(ET) NAQX15

VERMONT DREAM B249(AI)(ET) CCVB249

VERMONT DREAM Y301(AI)(ET) CCVY301

Complete sire here with outstanding pedigree. High figures and phenotype to match. Moderate frame, good weight for age, strong muscle with a good skin and hair type. Dam was a top cow and a full ET sister to J29 stood 3rd at Sydney Royal in a strong class behind the Champion and Reserve Champion heifers in 2014. Suitable on heifers.

CALVING EASE		July 2015 Angus Australia BREEDPLAN															
	CED	DTRS	GL	BW	200	400	600	MCWT	MILK	SS	DTC	CWT	EMA	RIB	RUMP	RBY%	IMF%
EBV	-3.3	-1.6	-3.4	5.1	53	93	131	131	17	2	-1.8	62	5.5	-1.9	-1	1.1	2.1
Acc	56%	51%	59%	71%	66%	66%	69%	65%	58%	68%	46%	60%	59%	60%	60%	57%	57%

Traits Observed: BWT,200WT,600WT(x2),SS,FAT,EMA,IMF

Purchaser:

Price:

Lot 4

DSK T410 JUICED J30(AI)(ET)

Born: 17/09/2013

Group; 2

ANGUS

HBR

Genetic Status:

Animal ID: NKSJ30

AMFU, NHFU, CAFU, DDFU

B/R NEW DESIGN 036 USA036

BON VIEW NEW DESIGN 208 USA208

BON VIEW ERICA 443 USA443

Sire: TC TOTAL 410 USA14844711

TWIN VALLEY PRECISION E161 USA12346200

TC ERICA EILEEN 2047 USA14270867

TC ERICA EILEEN 5116 USA12378867

B/R NEW DESIGN 036 USA036

BON VIEW NEW DESIGN 1407 USA1407

BON VIEW PRIDE 664 USA12139985

Dam: KANSAS ANNIE Y656(AI)(ET) NKLY656

G T EXPO USA11160688

AMAROO EXPO ANNIE U024(AI)(ET) BYEU024

SUMMITCREST ANNIE C022 USAC022

Another good 410 son here with good skin and hair. Strong carcass EBV and I feel should perform higher than his growth figures. Dam, Y656 is also the dam of DSK herd sire G198 who has sired many bulls in this draft. Suitable on heifers.

CALVING EASE		July 2015 Angus Australia BREEDPLAN															
	CED	DTRS	GL	BW	200	400	600	MCWT	MILK	SS	DTC	CWT	EMA	RIB	RUMP	RBY%	IMF%
EBV	-0.7	0	-3.9	3.9	49	82	112	111	14	1.2	-4	56	7.7	-1.7	-1.2	1.3	2
Acc	58%	52%	60%	73%	66%	65%	66%	65%	61%	61%	47%	61%	59%	60%	60%	58%	58%

Traits Observed: BWT,600WT(x2),SS,FAT,EMA,IMF

Purchaser:

Price:

Lot 5
DSK RR JIMBOB J21(AI)
 Born: 26/08/2013
 VERMILION DATELINE 7078 USA7078
 REMITALL NIGHTHAWK 37N CAN1171920
 DIAMOND D EVERA 073G CAN944010
Sire: REMITALL H RACHIS 21R CAN1274555
 O G L BATTLE CRY 427 128 USA12215320
 HENDERSON MISSIE 32'02 CAN1122972
 HENDERSON MISIE 2'97 CAN890141

Group; **4**

ANGUS
Genetic Status:
 TE MANIA MODEST Z793(AI) VTMZ793
 GILMANDYKE DARBY D0107 EUDD0107
 NARRANGULLEN EMILLESQUE A294(AI)(ET) NARA294
Dam: DSK GDK MILDRED G36 NKSG36
 MERRIDALE PACK-N-POWER A46(AI)(ET) CMDA46
 DSK P.N.P. MILDRED E41 NKSE41
 DSK MR E MILDRED W55 NKSW55

Animal ID: NKSJ21
 AMFU, NHFU, CA2%, DDFU

A heifers first calf and G36 was a heifers first calf as well. J21 once again proves the breeding power of these young Darby daughters and how well they click with Rachis. Loads of substance and full of meat from head to hoof.

CALVING EASE July 2015 Angus Australia BREEDPLAN																	
	CED	DTRS	GL	BW	200	400	600	MCWT	MILK	SS	DTC	CWT	EMA	RIB	RUMP	RBY%	IMF%
EBV	-2.6	-2.2	-2.9	6.1	52	97	126	121	15	2.5	-	71	1.4	-0.5	0.2	0.2	0.8
Acc	39%	27%	80%	72%	65%	63%	66%	59%	46%	62%	-	52%	48%	49%	50%	44%	41%

Traits Observed: GL,CE,BWT,200WT(x2),400WT,600WT(x2),SS,FAT,EMA,IMF

Purchaser:

Price:

Lot 6
DSK RR JERRY J24(AI)
 Born: 01/09/2013
 VERMILION DATELINE 7078 USA7078
 REMITALL NIGHTHAWK 37N CAN1171920
 DIAMOND D EVERA 073G CAN944010
Sire: REMITALL H RACHIS 21R CAN1274555
 O G L BATTLE CRY 427 128 USA12215320
 HENDERSON MISSIE 32'02 CAN1122972
 HENDERSON MISIE 2'97 CAN890141

Group; **4**

ANGUS
Genetic Status:
 TE MANIA MODEST Z793(AI) VTMZ793
 GILMANDYKE DARBY D0107 EUDD0107
 NARRANGULLEN EMILLESQUE A294(AI)(ET) NARA294
Dam: DSK GDK POLLY G33 NKSG33
 MERRIDALE PACK-N-POWER A46(AI)(ET) CMDA46
 DSK PNP POLLY E153 NKSE153
 DSK FB POLLY U22(AI) NKSU22

Animal ID: NKSJ24
 AMFU, NHFU, CAFU, DDFU

A heifers first calf and G33 was a heifers first calf as well. These Rachis, Darby crosses arfe good ones. Thickness in moderate frame with excellent structure and good temperaments. J24 is loaded with muscle throughout his body which is they type that gives high yielding carcasses.

CALVING EASE July 2015 Angus Australia BREEDPLAN																	
	CED	DTRS	GL	BW	200	400	600	MCWT	MILK	SS	DTC	CWT	EMA	RIB	RUMP	RBY%	IMF%
EBV	-1.8	-1.6	-0.5	5.6	48	88	110	107	16	1.3	-	66	2.1	-1.8	-2.1	1.1	0.7
Acc	38%	27%	80%	72%	65%	63%	65%	58%	47%	62%	-	52%	48%	49%	49%	44%	41%

Traits Observed: GL,CE,BWT,200WT(x2),400WT,600WT(x2),SS,FAT,EMA,IMF

Purchaser:

Price:

Lot 7
DSK RR KING RACHIS K3(AI)(ET)
 Born: 24/03/2014
 VERMILION DATELINE 7078 USA7078
 REMITALL NIGHTHAWK 37N CAN1171920
 DIAMOND D EVERA 073G CAN944010
Sire: REMITALL H RACHIS 21R CAN1274555
 O G L BATTLE CRY 427 128 USA12215320
 HENDERSON MISSIE 32'02 CAN1122972
 HENDERSON MISIE 2'97 CAN890141

Group; **4**

ANGUS
Genetic Status:
 S V F HI ROAD USA956
 DSK HR VANGUARD V69(AI) NKSV69
 DSK WB DANDLOO N16(AI)(ET) NKSX16
Dam: DSK V69 TENTURA Z11(AI) NKSZ11
 PALES PI RIGHT ON TARGET R88(AI)(ET) NJUR88
 DSK PRT TENTURA U42 NKSU42
 CALLEEN TENTURA M33(AI) NBMM33

Animal ID: NKSX3
 AMFU, NHFU, CAFU, DDFU

Extraordinary weight gain in this top young yearling sire. If you want extra weight and growth in your cattle this is the bull for you. Great temperament and a strong sires head with width through the hindquarter and plenty of depth of side. At scanning at just over 14 mths he weighed 796kg and was a good shape at birth with an easy 40kg birth weight. Great female line going back to M33 who was our one selection from the Calleen dispersal in the 1980's. Full ET brother to lot 8.

CALVING EASE July 2015 Angus Australia BREEDPLAN																	
	CED	DTRS	GL	BW	200	400	600	MCWT	MILK	SS	DTC	CWT	EMA	RIB	RUMP	RBY%	IMF%
EBV	-1.6	-	-1.4	6.3	47	88	108	101	13	1.2	-	63	0.3	-1.4	-0.7	0.4	0.7
Acc	39%	-	61%	68%	61%	62%	61%	55%	50%	62%	-	51%	50%	52%	52%	46%	44%

Traits Observed: BWT,400WT(x2),SS,FAT,EMA,IMF

Purchaser:

Price:

Lot 8
DSK RR KARATE K4(ET)
 Born: 21/03/2014
 VERMILION DATELINE 7078 USA7078
 REMITALL NIGHTHAWK 37N CAN1171920
 DIAMOND D EVERA 073G CAN944010
Sire: REMITALL H RACHIS 21R CAN1274555
 O G L BATTLE CRY 427 128 USA12215320
 HENDERSON MISSIE 32'02 CAN1122972
 HENDERSON MISIE 2'97 CAN890141

Group; **4**

ANGUS
Genetic Status:
 S V F HI ROAD USA956
 DSK HR VANGUARD V69(AI) NKSV69
 DSK WB DANDLOO N16(AI)(ET) NKSX16
Dam: DSK V69 TENTURA Z11(AI) NKSZ11
 PALES PI RIGHT ON TARGET R88(AI)(ET) NJUR88
 DSK PRT TENTURA U42 NKSU42
 CALLEEN TENTURA M33(AI) NBMM33

Animal ID: NKSX4
 AMFU, NHFU, CAFU, DDFU

Yearling bull out of a favourite donor dam now working in other studs. Another top Rachis son full ET sibling to lot 7. A more moderate package and chock full of muscle.

July 2015 Angus Australia BREEDPLAN																	
	CED	DTRS	GL	BW	200	400	600	MCWT	MILK	SS	DTC	CWT	EMA	RIB	RUMP	RBY%	IMF%
EBV	-1.8	-	-1.3	5.9	43	77	12	91	12	0.4	-	55	0.6	-1	-0.8	0.3	0.9
Acc	39%	-	61%	68%	61%	62%	61%	55%	50%	62%	-	51%	50%	52%	52%	46%	44%

Traits Observed: BWT,400WT(x2),SS,FAT,EMA,IMF

Purchaser:

Price:

Lot 9
DSK RR JUPITER J108(AI)
 Born: 18/11/2013
 VERMILION DATELINE 7078 USA7078
 REMITALL NIGHTHAWK 37N CAN1171920
 DIAMOND D EVERA 073G CAN944010
Sire: REMITALL H RACHIS 21R CAN1274555
 O G L BATTLE CRY 427 128 USA12215320
 HENDERSON MISSIE 32'02 CAN1122972
 HENDERSON MISIE 2'97 CAN890141

Group; **2**

ANGUS
Genetic Status:
 HBR
 Animal ID: **NKSJ108**
 AMFU, NHFU, CAFU, DDFU

CANDOLIER FOREVER 376 USA7501542
 J R JUICE 2005 USAZ005
 MG'S BLACK DIAMOND CAN5504
Dam: ALEX 2005 PANDA B120(AI) DIJB120
 G V POWER DRIVE 7369 USA7369
 ALEX PD PANDA V2(AI)(ET) DIJV2
 TE MANIA PANDA E12. VTME12+85

Another top Rachis bull with good skin and hair type. Dam is a moderate framed feamle with an excellent udder with plenty of milk and great udder who has joined our donor programme due to her great maternal and breeding consistency.

CALVING EASE		July 2015 Angus Australia BREEDPLAN															
	CED	DTRS	GL	BW	200	400	600	MCWT	MILK	SS	DTC	CWT	EMA	RIB	RUMP	RBY%	IMF%
EBV	0	-0.9	-2.7	5.1	44	78	96	93	15	1.3	-	54	0.8	-0.1	0.8	-0.3	0.6
Acc	42%	34%	80%	71%	64%	61%	62%	57%	51%	51%	-	52%	46%	49%	48%	44%	43%

Traits Observed: GL,CE,BWT,200WT(x2),400WT,600WT,SS,FAT,EMA,IMF

Purchaser: Price:

Lot 10
DSK RR JOEY J27(AI)
 Born: 10/09/2013
 VERMILION DATELINE 7078 USA7078
 REMITALL NIGHTHAWK 37N CAN1171920
 DIAMOND D EVERA 073G CAN944010
Sire: REMITALL H RACHIS 21R CAN1274555
 O G L BATTLE CRY 427 128 USA12215320
 HENDERSON MISSIE 32'02 CAN1122972
 HENDERSON MISIE 2'97 CAN890141

Group; **2**

ANGUS
Genetic Status:
 HBR
 Animal ID: **NKSJ27**
 AMFU, NHFU, CAFU, DDFU

S A F FOCUS OF E R USA6163
 BALDRIDGE NEBRASKA 901 USA13412671
 BALDRIDGE FLOSSIE 367 USA12885591
Dam: DSK BN EMPRESS G43(AI) NKSG43
 G V POWER DRIVE 7369 USA7369
 DSK UJ EMPRESS B82(AI) NKSB82
 DSK 2005 EMPRESS S17 NKSS17

Another heifers first calf with an easy calving. Typical Rachis son with muscle content throughout with plenty of cover. Maternal Empress line descends from the Grand Champion female at the Angus National Show and Sale.

CALVING EASE		July 2015 Angus Australia BREEDPLAN															
	CED	DTRS	GL	BW	200	400	600	MCWT	MILK	SS	DTC	CWT	EMA	RIB	RUMP	RBY%	IMF%
EBV	-2	-0.8	0	5.6	49	86	108	101	14	1.5	-	60	0.7	-0.2	0.2	0	0.7
Acc	42%	33%	78%	72%	64%	62%	66%	59%	49%	63%	-	53%	50%	51%	51%	47%	44%

Traits Observed: GL,CE,BWT,200WT,600WT(x2),SS,FAT,EMA,IMF

Purchaser: Price:

Lot 11
DSK KG JOLLY J36
 Born: 27/09/2013
 CONNEALY ONWARD USA14216491
 SITZ UPWARD 307R USA14963730
 SITZ HENRIETTA PRIDE 81M USA14087650
Sire: KANSAS UPWARD G198(AI) NKLG198
 BON VIEW NEW DESIGN 1407 USA1407
 KANSAS ANNIE Y656(AI)(ET) NKLY656
 AMAROO EXPO ANNIE U024(AI)(ET) BYEU024

Group; **2**

ANGUS
Genetic Status:
 HBR
 Animal ID: **NKSJ36**
 AMFU, NHFU, CAFU, DDFU

TE MANIA MODEST Z793(AI) VTMZ793
 GILMANDYKE DARBY D0107 EUDD0107
 NARRANGULLEN EMILLESQUE A294(AI)(ET) NARA294
Dam: DSK GDK DANDALOO G47 NKSG47
 MERRIDALE PACK-N-POWER A46(AI)(ET) CMDA46
 DSK P.N.P. DANDALOO E36 NKSE36
 DSK HR DANDALOO A18(AI)(ET) NKSA18

A cross of G198 and Darby which has worked so consistently. A heifers first calf and dam, G47 was a heifers first calf. Pedigree goes back to A18 who was a top breeder and Champion Calf Female at Rockhampton and is now a donor cow at Glenisa Angus stud.

Suitable for heifers.

CALVING EASE		July 2015 Angus Australia BREEDPLAN															
	CED	DTRS	GL	BW	200	400	600	MCWT	MILK	SS	DTC	CWT	EMA	RIB	RUMP	RBY%	IMF%
EBV	-1.7	-3	-	4.9	47	84	115	101	16	1.6	-	65	5.3	-1.7	-2.5	1.3	1.3
Acc	39%	31%	-	70%	62%	59%	64%	58%	40%	60%	-	50%	46%	47%	48%	43%	40%

Traits Observed: CE,BWT,200WT,600WT(x2),SS,FAT,EMA,IMF

Purchaser: Price:

Lot 12
DSK YA KANGA K1(AI)
 Born: 28/01/2014
 R R SCOTCHCAP 9440 USA9440
 EDI ANGUS RITO V6(AI) CMFV6
 EDI ANGUS W. RITA S15(AI)(ET) CMFS15
Sire: DSK V6 YARDARM Y27 NKSY27
 DSK JRS PRIME CUT P6(AI)(ET) NKSP6
 DSK P6 KIMBERLEY S6 NKSS6
 MT MARSDEN L3+91(AI)(ET) NLML3+91

Group; **2**

ANGUS
Genetic Status:
 HBR
 Animal ID: **NKSK1**
 AMFU, NHFU, CAFU, DDFU

PACK POWER SCOTCH CAP 889(ET) USA889
 MERRIDALE PACK-N-POWER A46(AI)(ET) CMDA46
 MERRIDALE MILDRED S16(AI)(ET) CMDS16
Dam: DSK PNP ELBA F81 NKSF81
 EDI ANGUS RITO V6(AI) CMFV6
 DSK V6 ELBA Z63 (TW) Z63(TW) NKSS63
 DSK 2005 ELBA Q28(AI) NKSQ28

Sire Yardarm, was the Brisbane Interbreed Champion in 2005 selling to Alexander Downs for \$38,000 where he worked until he was 11 years of age. Yardarm sired the Reserve Senior Champion bull at Sydney this year and sold for \$16,000 topping the sale. Appreciate the growth of this young bull only January born. From a top young cow with plenty of milk and growth in her pedigree. Only bull in the sale by Yardarm.

CALVING EASE		July 2015 Angus Australia BREEDPLAN															
	CED	DTRS	GL	BW	200	400	600	MCWT	MILK	SS	DTC	CWT	EMA	RIB	RUMP	RBY%	IMF%
EBV	-3.1	-	-	6.2	38	71	92	-	10	0.8	-	-	1.3	-1.1	-0.9	0.4	0.6
Acc	37%	-	-	53%	50%	48%	52%	-	41%	42%	-	-	39%	43%	42%	38%	37%

Traits Observed: BWT,400WT(x2),SS,FAT,EMA,IMF

Purchaser: Price:

Lot 13

DSK GYLR JUST-IN J122E (AI) (ET) (P)

Born: 16/12/2013

Group; 2

CHAROLAIS

White

Polled

Animal ID: DSKJ122E

Registered

GUNNADOO QANTAS Q73E (AI) GN1Q73E (D)

GUNNADOO SUGAR RAY GN1S202E (D)

GUNNADOO HERO M57E (AI) (ET) (P) GN1M57E (P)

Sire: GUNNADOO YOU LITTLE RIPPER (P) GN1Y142E (P)

GUNNADOO QUARTER MASTER Q95E R/F (AI) GN1Q95E (D)

GUNNADOO LAONIE T29E (P) GN1T29E (P)

GUNNADOO LAONIE Q69E (P) GN1Q69E (P)

AVERLAIS HORNY VAH23E

AVERLAIS PHIL VAP85E (H)

AVERLAIS JYNX VAJ15E

Dam: RIVERGLEN T1859 JDST1859E (H)

RIVERGLEN K60F JDSK60F

RIVERGLEN Q857 JDSQ857E

RIVERGLEN L952D JDSL952D

A special young embryo bull with maybe the best skin and hair in the Charolais draft with good muscle content. From a wonderful cow who was flushed due to her outstanding progeny.

CALVING EASE June 2015 Australasian Charolais GROUP BREEDPLAN																	
	CED	DTRS	GL	BW	200	400	600	MCWT	MILK	SS	DTC	CWT	EMA	RIB	RUMP	RBY%	IMF%
EBV	-	-	-	-	9	21	35	-	9	0	-	-	1.9	-0.9	-1.3	1	0.1
Acc	-	-	-	-	52%	52%	52%	-	49%	46%	-	-	30%	31%	30%	31%	28%

Traits Observed: 400WT,600WT,SS,FAT,EMA,IMF

Purchaser:

Price:

Lot 14

DSK RSMK JOKER J8E (AI) (P) (R/F)

Born: 25/08/2013

Group; 2

CHAROLAIS

Red factor

Polled

Animal ID: DSKJ8E

Registered

THOMAS OAHE WIND 0722ET P PED-2717E (H)

TR SMOKEONTHEWATER ET PED-545E (H)

THOMASSWISSERSWEET1764ET PED-9932E (H)

Sire: TR RED SMOKE PMC316641 (P) (R/F) OAUB6641E (P)

THREE TREES ADVANTAGE ET PED-9613E (H)

THOMAS MS ADVANTAGE 2621 PED-9316E (H)

TR MS BONANZA 9648 PED-9697E (H)

LT UNLIMITED EASE 9108 OAUJ9108E (H)

LT EASY BLEND 5125 PLD (P) OAU5113E (P)

LT BRENDA 1014 PLD PED-4572E

Dam: DSK EASY GINA F39E (AI) (P) DSKF39E (P)

WATERFORD UNCLE SAM (P) WETU30E (P)

NANDILLYAN A57E (P) FA57E (P)

NANDILLYAN ZIG 8 FW3E

Red factor polled bull suitable for today's markets being moderate framed with good finishing and a heifers first calf. Maternal Grand Dam is one of our top donor cows.

CALVING EASE June 2015 Australasian Charolais GROUP BREEDPLAN																	
	CED	DTRS	GL	BW	200	400	600	MCWT	MILK	SS	DTC	CWT	EMA	RIB	RUMP	RBY%	IMF%
EBV	12.9	7.6	-4.9	-2.7	12	22	23	-	9	0.1	-	0.3	2.8	3.8	-1.9	0.5	-0.1
Acc	44%	36%	75%	72%	64%	63%	69%	-	43%	72%	-	47%	50%	49%	48%	46%	45%

Traits Observed: GL,BWT,200WT,600WT(x2),SS,FAT,EMA,IMF

Purchaser:

Price:

Lot 15

DSK PGM JUSTIFIED J4E (AI) (P)

Born: 22/08/2013

Group; 2

CHAROLAIS

White

Polled

Animal ID: DSKJ4E

Registered

LT RIO BLANCO 1234 P (P) OAUW591E (P)

SVY PIONEER 402P PED-8416E

SVY JINGLES 153L PED-3049E

Sire: SVY PILGRIM PLD 655S (P) OACB3031E (P)

RGF EUREKA 17E PMC179283 (P) OACQ17E (P)

HFCC FRENCHKISS 919J PED-9584E

QCR FRENCHKISS 33F PED-8979E

VCR SIR DUKE 914 PLD PED-914E (H)

JCR SIR DUKE 041 (P) OAUV9856E (P)

WCR MISS MAC 638 PED-4464E

Dam: DSK DK BEATRIX F19E (AI) (P) DSKF19E (P)

AYR HUELVA'S HUSTLER (AI) AYRT100E

DSK T100 BEATRIX Y18 DSKY18E (H)

DSK BEATRIX V1 (P) DSKV1E (P)

Complete sire package in this outstanding bull. Big volume, thickness, easy doing with a strong sires head. From an outstanding cow line going back to V1 who produced several top producing daughters. If you are serious about making money in the beef industry don't miss this sire.

CALVING EASE June 2015 Australasian Charolais GROUP BREEDPLAN																	
	CED	DTRS	GL	BW	200	400	600	MCWT	MILK	SS	DTC	CWT	EMA	RIB	RUMP	RBY%	IMF%
EBV	5.3	-5.3	-5.4	0.2	20	42	60	-	5	2.1	-	-	1.9	0.9	1.3	-0.3	0.5
Acc	43%	37%	75%	72%	64%	63%	69%	-	45%	73%	-	-	46%	51%	50%	48%	45%

Traits Observed: GL,BWT,200WT,600WT(x2),SS,FAT,EMA,IMF

Purchaser:

Price:

Lot 16

DSK PJ JUPITER J12E (AI) (P)

Born: 30/08/2013

Group; 2

CHAROLAIS

White

Polled

Animal ID: DSKJ12E

Registered

EC BRONSON 204 POLLED (P) PED-1938E (P)

RDGC KALAMAZOO 387F (P) PED-1257E (P)

MISS RDGC SHEBA 1W PED-2909E (H)

Sire: CS PLD JUNCTION 4J MC228742 (P) OACU8742E (P)

MNE EXCLUSIVE 17E (P) PED-9343E (P)

CS EXCLUSIVE'S GUEST 5G PED-2100E (H)

HTA CROCUS PLD 503E (P) PED-915E (P)

SVY PIONEER 402P PED-8416E

SVY PILGRIM PLD 655S (P) OACB3031E (P)

HFCC FRENCHKISS 919J PED-9584E

Dam: DSK PGM FLOSSY G24E (AI) (ET) (P) (R/F) DSKG24E (P)

PINNAROO RED RULER (AI) (ET) BAAP89F (H)

PINNAROO RED FAIRY FLOSS R/F BAAS74E (D)

PINNAROO NOBLE LADY (AI) BAAN102E

A big framed sire with a strong muscle pattern. Will add a power of weight to his progeny.

CALVING EASE June 2015 Australasian Charolais GROUP BREEDPLAN																	
	CED	DTRS	GL	BW	200	400	600	MCWT	MILK	SS	DTC	CWT	EMA	RIB	RUMP	RBY%	IMF%
EBV	-17.7	-6.8	0.3	3.2	24	49	79	-	12	1.9	-	-	3.1	0	0	1.3	-0.3
Acc	45%	40%	73%	71%	64%	63%	69%	-	50%	72%	-	-	47%	52%	51%	50%	46%

Traits Observed: GL,BWT,200WT,600WT(x2),SS,FAT,EMA,IMF

Purchaser:

Price:

Lot 17
 Born: 22/09/2013
 FLEETS RASCAL IAEF6170F
 FERNVALE MAGNUM (AI) FENM1E (D)
 FERNVALE JA-CIE (AI) (ET) FENJ15E (H)
Sire: GUNNADOO QUARTER MASTER Q95E R/F (AI) GN1Q95E (D)
 PALGROVE HOT SHOT (AI) PKH14E (H)
 GUNNADOO DR STONE L13D (AI) GN1L13D (H)
 GUNNADOO DR STONE 31 GN1E146C (H)

CHAROLAIS
 White Dehorned
 HUELVA OAFM501F (H)
 AYR HUELVA'S HUSTLER (AI) AYRT100E
 AYR FRANCO'S HELENE AYRL21E
Dam: DSK AH BEATRIX X15E DSKX15E
 LHD MR PERFECT Y416 (P) OACJ416E (P)
 ROSEDALE BEATRIX 9 (AI) (P) MRP14E (P)
 ROSEDALE BEATRIX 2ND MRE5D (H)

Animal ID: DSKJ27E
 Registered

Top bull showing all the characteristics of the modern Charolais bull. Deep sided with plenty of muscle and easy doing. Dam, X15 was a top matron with good skin and hair type and had a tremendous udder with good milk.

CALVING EASE June 2015 Australasian Charolais GROUP BREEDPLAN																	
	CED	DTRS	GL	BW	200	400	600	MCWT	MILK	SS	DTC	CWT	EMA	RIB	RUMP	RBY%	IMF%
EBV	-1	1.2	0.1	0.9	7	18	28	-	6	0.3	-	-	1.3	-0.3	-0.4	-0.1	0.7
Acc	45%	43%	53%	69%	63%	60%	61%	-	57%	53%	-	-	40%	45%	44%	42%	39%

Traits Observed: BWT,200WT,600WT(x2),SS,FAT,EMA,IMF
 Purchaser: Price:

Lot 18
 Born: 20/09/2013
 LT RIO BLANCO 1234 P (P) OAUW591E (P)
 SVY PIONEER 402P PED-8416E
 SVY JINGLES 153L PED-3049E
Sire: SVY PILGRIM PLD 655S (P) OACB3031E (P)
 RGP EUREKA 17E PMC179283 (P) OACQ17E (P)
 HFCC FRENCHKISS 919J PED-9584E
 QCR FRENCHKISS 33F PED-8979E

CHAROLAIS
 White Dehorned
 FLEETS RASCAL IAEF6170F
 PALGROVE NAPOLEON (AI) (ET) PKN114F (H)
 SUNDOWNER RANCHES N076F (AI) (ET) SRN76F
Dam: PALGROVE BRONWIN 71 (AI) (TW) PKY149E (H)
 GUNNADOO RED BARON R/F GN1Q31D (D)
 PALGROVE BRONWIN 55 PKV286E (H)
 PALGROVE BRONWIN 40 PKQ104E (H)

Animal ID: DSKJ26E
 Registered

First of 3 ET full brothers and all are top sire prospects J26E shows all the right traits for today's commercial industry. Moderate frame and bone, good muscle and fattening ability. Dam was purchased to form a new female line and is still in our ET programme. Bronwin 55 was Champion Interbreed cow at Sydney Royal. Full ET brothers to lots 31 and 63.

CALVING EASE June 2015 Australasian Charolais GROUP BREEDPLAN																	
	CED	DTRS	GL	BW	200	400	600	MCWT	MILK	SS	DTC	CWT	EMA	RIB	RUMP	RBY%	IMF%
EBV	-7.2	-2.1	-2.3	1.8	18	35	50	-	3	1.3	-	-	1.7	0.8	0.9	-0.2	0.2
Acc	47%	42%	58%	71%	61%	59%	61%	-	53%	57%	-	-	40%	47%	46%	42%	38%

Traits Observed: GL,BWT,200WT,600WT(x2),SS,FAT,EMA,IMF
 Purchaser: Price:

Lot 19
 Born: 10/10/2013
 LT WESTERN SPUR 2061 PLD M645785 (P) OAUW2061E (P)
 LT WESTERN EDGE 4057 PLD M686616 (P) OAUW6616E (P)
 LT DUCHESSE OF MAC 7076 P PED-2993E (H)
Sire: DSK EDGE IT TO SLIPS E18 (AI) (ET) (P) DSK E18E (P)
 GUNNADOO NUGGET N166D R/F GN1N166D (D)
 DSK GN JULIETTE U1E (AI) (P) DSKU1E (P)
 ST ANTONIO JULIETTE (P) MGBS2E (P)

CHAROLAIS
 White Polled
 GUNNADOO SUGAR RAY GN1S202E (D)
 GUNNADOO YOU LITTLE RIPPER (P) GN1Y142E (P)
 GUNNADOO LAONIE T29E (P) GN1T29E (P)
Dam: DSK GYLR WENDY F34E (AI) (P) DSK F34E (P)
 LT WYOMING WIND 4020 PLD (P) OAUW4020E (P)
 DSK WW WENDY A10E (AI) (ET) (P) DSKA10E (P)
 PINNAROO RED TRENDIE R/F BAAS81E (D)

Animal ID: DSKJ44E
 Registered

Top sire prospect. High performance, good skin and hair with a strong muscle pattern. Maternal Grand Dam has bred our best females.

CALVING EASE June 2015 Australasian Charolais GROUP BREEDPLAN																	
	CED	DTRS	GL	BW	200	400	600	MCWT	MILK	SS	DTC	CWT	EMA	RIB	RUMP	RBY%	IMF%
EBV	1.3	4.6	-2	1	23	41	73	-	12	1.1	-	-	2.1	0.5	0.6	0.3	0.2
Acc	38%	32%	51%	70%	61%	63%	66%	-	42%	70%	-	-	45%	46%	44%	46%	44%

Traits Observed: CE,BWT,200WT,400WT,600WT,SS,FAT,EMA,IMF
 Purchaser: Price:

Lot 20
 Born: 08/09/2013
 LT RIO BLANCO 1234 P (P) OAUW591E (P)
 SVY PIONEER 402P PED-8416E
 SVY JINGLES 153L PED-3049E
Sire: SVY PILGRIM PLD 655S (P) OACB3031E (P)
 RGP EUREKA 17E PMC179283 (P) OACQ17E (P)
 HFCC FRENCHKISS 919J PED-9584E
 QCR FRENCHKISS 33F PED-8979E

CHAROLAIS
 White Polled
 HARVIE JAGER 65J PMC228759 (P) OACU8759E (P)
 DSK HJ EXPECT NO BETTER E38E (AI)(ET)(P)(R/F)DSKE38E(P)
 DSK WW ESTELLE Z6E (AI) (ET) (P) DSKZ6E (P)
Dam: DSK ENB JULIETTE G45E (P) (R/F) DSKG45E (P)
 LT WYOMING WIND 4020 PLD (P) OAUW4020E (P)
 DSK WW JULIETTE B10E (AI) (ET) (P) DSKB10E (P)
 DSK GN JULIETTE U1E (AI) (P) DSKU1E (P)

Animal ID: DSKJ16E
 Registered

Powerful sires outlook in a smooth pattern. J16E will add performance and extra weight. J16E was a heifers first calf and his dam, G45 has another top weaner bull this year.

CALVING EASE June 2015 Australasian Charolais GROUP BREEDPLAN																	
	CED	DTRS	GL	BW	200	400	600	MCWT	MILK	SS	DTC	CWT	EMA	RIB	RUMP	RBY%	IMF%
EBV	-18.4	-7	-2.5	2.4	24	46	66	-	7	4	-	-	1.8	1.5	2.5	-0.5	0.5
Acc	45%	40%	73%	71%	63%	63%	69%	-	49%	72%	-	-	47%	48%	48%	49%	46%

Traits Observed: GL,CE,BWT,200WT,600WT(x2),SS,FAT,EMA,IMF
 Purchaser: Price:

Lot 21
DSK KG JEREMY J37
Born: 05/10/2013
CONNEALY ONWARD USA14216491
SITZ UPWARD 307R USA14963730
SITZ HENRIETTA PRIDE 81M USA14087650
Sire: KANSAS UPWARD G198(AI) NKLKG198
BON VIEW NEW DESIGN 1407 USA1407
KANSAS ANNIE Y656(AI)(ET) NKLY656
AMAROO EXPO ANNIE U024(AI)(ET) BYEU024

ANGUS
Genetic Status:
TE MANIA MODEST Z793(AI) VTMZ793
GILMANDYKE DARBY D0107 EUDD0107
NARRANGULLEN EMILLESQUE A294(AI)(ET) NARA294
Dam: DSK GDK GISELLE G37 NKSG37
MERRIDALE PACK-N-POWER A46(AI)(ET) CMDA46
DSK P.N.P. GISELLE E37 NKSE37
PALES HU GISELLE X37(AI) NJUX37

HBR
Animal ID: NKSJ37
AMFU, NHFU, CAFU, DDFU

Stylish bull that catches your eye with his outlook and conformation. Heifers first calf from another Darby daughter. Suitable for heifers.

CALVING EASE July 2015 Angus Australia BREEDPLAN																	
	CED	DTRS	GL	BW	200	400	600	MCWT	MILK	SS	DTC	CWT	EMA	RIB	RUMP	RBY%	IMF%
EBV	-1.5	-3.3	-	5.3	52	93	131	115	18	2.8	-	73	5.3	-1.6	-2.4	1.6	1.2
Acc	39%	31%	-	70%	63%	61%	67%	60%	40%	65%	-	51%	49%	49%	52%	45%	42%

Traits Observed: CE,BWT,200WT,600WT(x2),SS,FAT,EMA,IMF

Purchaser: Price:

Lot 22
DSK KG JOKESTER J48
Born: 04/10/2013
CONNEALY ONWARD USA14216491
SITZ UPWARD 307R USA14963730
SITZ HENRIETTA PRIDE 81M USA14087650
Sire: KANSAS UPWARD G198(AI) NKLKG198
BON VIEW NEW DESIGN 1407 USA1407
KANSAS ANNIE Y656(AI)(ET) NKLY656
AMAROO EXPO ANNIE U024(AI)(ET) BYEU024

ANGUS
Genetic Status:
TE MANIA MODEST Z793(AI) VTMZ793
GILMANDYKE DARBY D0107 EUDD0107
NARRANGULLEN EMILLESQUE A294(AI)(ET) NARA294
Dam: DSK GDK POWER G56 NKSG56
BALDRIDGE NEBRASKA 901 USA13412671
DSK B.NEB POWER D50(AI) NKSD50
DSK U72 POWER X20(TW) NK SX20

HBR
Animal ID: NKSJ48
AMFU, NHFU, CAFU, DDFU

Another G198 and Darby cross and a heifers first calf making a top sire with extra frame and will develop into a top sire. Dam, G56 has a safe pedigree with Nebraska on the dam's side. Suitable for heifers.

CALVING EASE July 2015 Angus Australia BREEDPLAN																	
	CED	DTRS	GL	BW	200	400	600	MCWT	MILK	SS	DTC	CWT	EMA	RIB	RUMP	RBY%	IMF%
EBV	-0.4	-1.5	-	5.4	48	88	126	111	16	2.4	-	69	5.9	-2.3	-3.3	1.8	1.2
Acc	39%	31%	-	70%	63%	61%	67%	60%	41%	65%	-	52%	50%	49%	52%	46%	42%

Traits Observed: CE,BWT,200WT,600WT(x2),SS,FAT,EMA,IMF

Purchaser: Price:

Lot 23
DSK KG JERUSALEM J58
Born: 10/11/2013
CONNEALY ONWARD USA14216491
SITZ UPWARD 307R USA14963730
SITZ HENRIETTA PRIDE 81M USA14087650
Sire: KANSAS UPWARD G198(AI) NKLKG198
BON VIEW NEW DESIGN 1407 USA1407
KANSAS ANNIE Y656(AI)(ET) NKLY656
AMAROO EXPO ANNIE U024(AI)(ET) BYEU024

ANGUS
Genetic Status:
PACK POWER SCOTCH CAP 889(ET) USA889
MERRIDALE PACK-N-POWER A46(AI)(ET) CMDA46
MERRIDALE MILDRED S16(AI)(ET) CMD S16
Dam: DSK PNP ERINETTE F130 NKSF130
DSK HLE ATOMIC BIG EARS A99(AI)(ET) NKSA99
DSK ABE ERINETTE D19(AI) NKSD19
DSK W13 ERINETTE A70 NKSA70

HBR
Animal ID: NKSJ58
AMFU, NHFU, CAFU, DD3%

J58 has he matures will show thickness and muscle content as we expect from G198 progeny. Maternal Grand Dam, D19 is a top cow who is easy keeping and strong maternal traits.

CALVING EASE July 2015 Angus Australia BREEDPLAN																	
	CED	DTRS	GL	BW	200	400	600	MCWT	MILK	SS	DTC	CWT	EMA	RIB	RUMP	RBY%	IMF%
EBV	1	-0.7	-	5.4	50	93	127	110	16	2.6	-	71	5.3	-1.4	-1.5	1.3	1
Acc	39%	31%	-	69%	62%	61%	66%	59%	42%	63%	-	51%	49%	51%	52%	47%	44%

Traits Observed: CE,BWT,200WT,600WT(x2),SS,FAT,EMA,IMF

Purchaser: Price:

Lot 24
DSK KG JUPITER J68
Born: 13/11/2013
CONNEALY ONWARD USA14216491
SITZ UPWARD 307R USA14963730
SITZ HENRIETTA PRIDE 81M USA14087650
Sire: KANSAS UPWARD G198(AI) NKLKG198
BON VIEW NEW DESIGN 1407 USA1407
KANSAS ANNIE Y656(AI)(ET) NKLY656
AMAROO EXPO ANNIE U024(AI)(ET) BYEU024

ANGUS
Genetic Status:
TC FOREMAN 016 USA13699216
DSK TCF ANATOLE A66(AI) NKSA66
DSK QC AVIS U13(AI) NK SU13
Dam: DSK A66 ISOBYX E144 NKSE144
BURNIMA UKRAINE U23(AI)(ET) DWBU23
DSK U23 ISOBYX A141 NKSA141
DSK PRT ISOBYX W20 NKSW20

HBR
Animal ID: NKSJ68
AMFU, NHFU, CA2%, DD8%

Strong top with a good spine as we expect from G198 sons. Maternal side originated from a cow and daughter purchased from Strathtay in WA as one of our foundation female lines and has produced some top females. Suitable on heifers.

CALVING EASE July 2015 Angus Australia BREEDPLAN																	
	CED	DTRS	GL	BW	200	400	600	MCWT	MILK	SS	DTC	CWT	EMA	RIB	RUMP	RBY%	IMF%
EBV	-0.9	-0.1	-	4.9	47	85	113	100	16	0.8	-	66	5.5	-1.6	-2.2	1.2	0.9
Acc	37%	29%	-	70%	63%	63%	67%	60%	41%	66%	-	51%	49%	49%	52%	45%	42%

Traits Observed: CE,BWT,200WT,400WT,600WT,SS,FAT,EMA,IMF

Purchaser: Price:

Select Yearling Angus Bulls

We have made the decision to offer these special embryo transfer yearling Angus bulls to give our clients a chance to get an extra season out of their selection. These select yearling bulls come Spring should safely cover 20 to 30 females in good conditions over a 6 to 8 week joining period. This practice gives you an extra joining out of your sire selection. Nutrition is an important factor to maintain the growth level in the young bull during this time as this is a major growth year for your bull. You should have no impediment to the bulls mature growth or longevity if good nutrition is maintained over joining period and the following year. This draft of 6 top ET yearlings are the complete male portion of this programme.

Lot 25	DSK RR KAPPER K10(ET)	ANGUS	HBR	Animal ID: NKS10
Born: 22/07/2014	Group; 3	Genetic Status:		AMFU, NHFU, CAFU, DDFU

VERMILION DATELINE 7078 USA7078

REMITALL NIGHTHAWK 37N CAN1171920

DIAMOND D EVERA 073G CAN944010

Sire: REMITALL H RACHIS 21R CAN1274555

O G L BATTLE CRY 427 128 USA12215320

HENDERSON MISSIE 32'02 CAN1122972

HENDERSON MISIE 2'97 CAN890141

R R FERDINAND 758D USA758D

MONTEREY VIRTUOSO V200(AI) WGJV200

KARRIDALE HI-FI P9 WGJP9

Dam: MONTEREY FANFARE X69 WGJX69

LITTLE MEADOWS SANDFORD S9(AI) WGA59

MONTEREY FANFARE U35 WGJU35

KARRIDALE FANFARE S3 WGSJ3

A great yearling Rachis son who was the heaviest and had the highest IMF scan of 6.3% at 10 months of age. K10 is an attractive long bodied bull that will mature into an impressive herd sire. Dam, X69 was purchased from a non Breedplan herd hence the low EBV figures. K10 is and will breed well above what his EBV's suggest. You decide.

CALVING EASE		July 2015 Angus Australia BREEDPLAN															
	CED	DTRS	GL	BW	200	400	600	MCWT	MILK	SS	DTC	CWT	EMA	RIB	RUMP	RBY%	IMF%
EBV	-2.7	-	-1.6	6.4	44	85	100	-	12	1.4	-	-	0	0.2	1.1	-0.3	0.9
Acc	36%	-	50%	67%	60%	61%	58%	-	43%	66%	-	-	49%	49%	50%	44%	41%

Traits Observed: BWT,200WT,400WT,SS,FAT,EMA,IMF

Purchaser:

Price:

Lot 26	DSK RR KRONK K11(AI)(ET)	ANGUS	HBR	Animal ID: NKS11
Born: 23/07/2014	Group; 3	Genetic Status:		AMFU, NHFU, CAFU, DDFU

VERMILION DATELINE 7078 USA7078

REMITALL NIGHTHAWK 37N CAN1171920

DIAMOND D EVERA 073G CAN944010

Sire: REMITALL H RACHIS 21R CAN1274555

O G L BATTLE CRY 427 128 USA12215320

HENDERSON MISSIE 32'02 CAN1122972

HENDERSON MISIE 2'97 CAN890141

R R FERDINAND 758D USA758D

MONTEREY VIRTUOSO V200(AI) WGJV200

KARRIDALE HI-FI P9 WGJP9

Dam: MONTEREY FANFARE X69 WGJX69

LITTLE MEADOWS SANDFORD S9(AI) WGA59

MONTEREY FANFARE U35 WGJU35

KARRIDALE FANFARE S3 WGSJ3

Some consider K11 the best of these 4 ET brothers. K11 shows plenty of length with depth of side. A top sire prospect and a chance to get an extra season from a bull buying as a yearling. Note the usage recommendations in the front of this catalogue for young bulls.

CALVING EASE		July 2015 Angus Australia BREEDPLAN															
	CED	DTRS	GL	BW	200	400	600	MCWT	MILK	SS	DTC	CWT	EMA	RIB	RUMP	RBY%	IMF%
EBV	-1	-	-1.8	5.5	40	77	91	-	12	1.2	-	-	1	0.3	1.2	-0.3	0.8
Acc	36%	-	50%	67%	60%	61%	58%	-	43%	66%	-	-	49%	49%	50%	44%	41%

Traits Observed: BWT,200WT,400WT,SS,FAT,EMA,IMF

Purchaser:

Price:

Lot 27	DSK UJ KLINGER K15(AI)(ET)	ANGUS	HBR	Animal ID: NKS15
Born: 02/08/2014	Group; 3	Genetic Status:		AMFU, NHFU, CAFU, DDFU

PINE DRIVE BIG SKY USA9894245

BROST POWER DRIVE USA251

BROST ELBA 916 USA916

Sire: G V POWER DRIVE 7369 USA7369

ANKONIAN CORNHUSKER USA785532

GREEN VALLEY ECTESSA 82 85 USA727688

GREEN VALLEY ECTESSA 376 82 USA239440

SAYRE PATRIOT USA9000000

BURTHLENE PATRIOT 47M CAN47M

GLEN ISLAY BLACKBIRD 9J CAN471303

Dam: NO.1 HOT STUFF 1ST M14(AI)(ET) WSPM14

SIR WMS WAMPUM CAN420D

NO.1 HOT STUFF+88(AI) WSPH1+88

NO.1 HOT DOT F1. WSPF1+86

The result of an embryo made 20 years ago. An absolute stand out. A young yearling bull with a big future. Real outcross genetics from one of our original foundation cows who was a full sister to a Royal Show Interbreed Champion. These 20 year old EBV's are well above for his time and he proves himself extremely well above "modern" Angus genetics.

CALVING EASE		July 2015 Angus Australia BREEDPLAN															
	CED	DTRS	GL	BW	200	400	600	MCWT	MILK	SS	DTC	CWT	EMA	RIB	RUMP	RBY%	IMF%
EBV	-0.3	-1.6	-1.7	5	37	61	79	80	11	2	-3.1	49	1.9	-1.4	0.2	0.2	0.3
Acc	56%	50%	62%	74%	69%	70%	69%	65%	64%	72%	52%	62%	62%	62%	63%	59%	57%

Traits Observed: BWT,200WT,400WT,SS,FAT,EMA,IMF

Purchaser:

Price:

Lot 28
DSK HR KHAKI K12(AI)(ET)
 Born: 23/07/2014
 R&J SPADE 1204 USA1204
 HOFF HI SPADE S C 491 USASC491+
 HOFF MISS SCOTCH CAP 074 USA074
Sire: S V F HI ROAD USA956
 Q A S TRAVELER 23-4 USA23-4
 LADY BLACKBIRD 111 G D A R USA111
 BLACKBIRD LADY 851 G D A R USA851

ANGUS
Genetic Status:
 DOUBLE A WILLIE BOY 2S CAN2S
 BLACK VELVET WILLYBOY J31+89(AI) WZJJ31+89
 BLACK VELVET REGENCY D37. WZJD37+84
Dam: DSK WB DANDLOO P22 NKSP22
 6+ HORIZON(ET) SIX39
 TE MANIA DANDLOO F156.(AI)(ET) VTMF156+86
 TE MANIA DANDLOO D108. VTMD108+84

HBR
Animal ID: NKSK12
 AMFU, NHFU, CAFU, DD2%

18 year old embryo here with ET brothers having worked in studs. Hi Road is invaluable for his female breeding potential with many of our top bulls over the years being sons of Hi Road cows. Dam, P22 was a standout breeder with big capacity and high maternal values and has daughters sold into many studs and working so well they are now used as donors.

CALVING EASE		July 2015 Angus Australia BREEDPLAN															
	CED	DTRS	GL	BW	200	400	600	MCWT	MILK	SS	DTC	CWT	EMA	RIB	RUMP	RBY%	IMF%
EBV	-1.2	-1.7	-0.2	5.1	37	64	91	95	10	-0.1	-2	48	0	-1.6	-1.4	-0.2	1
Acc	56%	48%	62%	73%	69%	69%	68%	65%	63%	72%	52%	62%	61%	62%	63%	59%	57%

Traits Observed: BWT,200WT,400WT,SS,FAT,EMA,IMF
 Purchaser: Price:

Lot 29
DSK RR KRUGER K9(AI)(ET)
 Born: 21/07/2014
 VERMILION DATELINE 7078 USA7078
 REMITALL NIGHTHAWK 37N CAN1171920
 DIAMOND D EVERA 073G CAN944010
Sire: REMITALL H RACHIS 21R CAN1274555
 O G L BATTLE CRY 427 128 USA12215320
 HENDERSON MISSIE 32'02 CAN1122972
 HENDERSON MISIE 2'97 CAN890141

ANGUS
Genetic Status:
 R R FERDINAND 758D USA758D
 MONTEREY VIRTUOSO V200(AI) WGJV200
 KARRIDALE HI-FI P9 WGJP9
Dam: MONTEREY FANFARE X69 WGJX69
 LITTLE MEADOWS SANDFORD S9(AI) WGAS9
 MONTEREY FANFARE U35 WGJU35
 KARRIDALE FANFARE S3 WGJS3

HBR
Animal ID: NKSK9
 AMFU, NHFU, CAFU, DDFU

Another of these top ET brothers. Moderate frame with length and good shape with thickness throughout and down the hindquarter. Make sure to read the recommendations on how to use yearling bulls to get the most out of their breeding career in the front of the catalogue.

CALVING EASE		July 2015 Angus Australia BREEDPLAN															
	CED	DTRS	GL	BW	200	400	600	MCWT	MILK	SS	DTC	CWT	EMA	RIB	RUMP	RBY%	IMF%
EBV	-1.4	-	-1.7	5.4	39	73	86	-	11	-	-	-	0.9	0.3	0.6	0.1	0.6
Acc	36%	-	50%	67%	61%	61%	58%	-	43%	-	-	-	49%	49%	50%	44%	41%

Traits Observed: BWT,200WT,400WT,FAT,EMA,IMF
 Purchaser: Price:

Lot 30
DSK RR KOJONUP K8(AI)(ET)
 Born: 17/07/2014
 VERMILION DATELINE 7078 USA7078
 REMITALL NIGHTHAWK 37N CAN1171920
 DIAMOND D EVERA 073G CAN944010
Sire: REMITALL H RACHIS 21R CAN1274555
 O G L BATTLE CRY 427 128 USA12215320
 HENDERSON MISSIE 32'02 CAN1122972
 HENDERSON MISIE 2'97 CAN890141

ANGUS
Genetic Status:
 R R FERDINAND 758D USA758D
 MONTEREY VIRTUOSO V200(AI) WGJV200
 KARRIDALE HI-FI P9 WGJP9
Dam: MONTEREY FANFARE X69 WGJX69
 LITTLE MEADOWS SANDFORD S9(AI) WGAS9
 MONTEREY FANFARE U35 WGJU35
 KARRIDALE FANFARE S3 WGJS3

HBR
Animal ID: NKSK8
 AMFU, NHFU, CAFU, DDFU

A moderate framed yearling bull from 4 ET siblings with lots of muscle content and shape. Very docile nature in this stout made young sire. Read up on joining recommendations for getting the best out of your yearling bulls to make sure of sustained growth and bull longevity in the front of the catalogue.

CALVING EASE		July 2015 Angus Australia BREEDPLAN															
	CED	DTRS	GL	BW	200	400	600	MCWT	MILK	SS	DTC	CWT	EMA	RIB	RUMP	RBY%	IMF%
EBV	0.6	-	-2.3	4.6	38	74	85	-	12	-0.2	-	-	1.4	0.3	0.9	-0.3	0.6
Acc	36%	-	50%	67%	60%	61%	58%	-	43%	66%	-	-	49%	49%	50%	44%	41%

Traits Observed: BWT,200WT,400WT,SS,FAT,EMA,IMF
 Purchaser: Price:



No.1 Hot Stuff M14



DSK WB Dandaloo P22

Lot 31	DSK PGM JUST-JOE J96E (AI) (ET) (P)	CHAROLAIS	Animal ID: DSKJ96E
Born: 20/09/2013	Group; 1	White Polled	Registered
LT RIO BLANCO 1234 P (P) OAUW591E (P)		FLEETS RASCAL IAEF6170F	
SVY PIONEER 402P PED-8416E		PALGROVE NAPOLEON (AI) (ET) PKN114F (H)	
SVY JINGLES 153L PED-3049E		SUNDOWNER RANCHES N076F (AI) (ET) SRN76F	
Sire: SVY PILGRIM PLD 655S (P) OACB3031E (P)		Dam: PALGROVE BRONWIN 71 (AI) (TW) PKY149E (H)	
RGP EUREKA 17E PMC179283 (P) OACQ17E (P)		GUNNADOO RED BARON R/F GN1Q31D (D)	
HFCC FRENCHKISS 919J PED-9584E		PALGROVE BRONWIN 55 PKV286E (H)	
QCR FRENCHKISS 33F PED-8979E		PALGROVE BRONWIN 40 PKQ104E (H)	

Full ET brother to lot 18 and 63 and very similar and also polled. A good all round sire who will suit all markets.

CALVING EASE		June 2015 Australasian Charolais GROUP BREEDPLAN															
	CED	DTRS	GL	BW	200	400	600	MCWT	MILK	SS	DTC	CWT	EMA	RIB	RUMP	RBY%	IMF%
EBV	3.5	1	-3.3	-0.1	16	29	39	42	5	1.2	-	-	1.5	0.7	0.7	-0.2	0
Acc	47%	42%	59%	72%	66%	64%	68%	60%	53%	70%	-	-	47%	52%	51%	49%	45%

Traits Observed: BWT,200WT,600WT(x2),SS,FAT,EMA,IMF

Purchaser:

Price:

Lot 32	DSK EXP JOSEPH J54E (P)	CHAROLAIS	Animal ID: DSKJ54E
Born: 14/10/2013	Group; 1	White Polled	Registered
LANG'S ERIC THE RED 3E (P/S) PED-8117E (S)		M6 GRID MAKER 104 PET M633377 (P) OAUW3377E (P)	
HARVIE JAGER 65J PMC228759 (P) OACU8759E (P)		EC NO DOUBT 2022 P M685500 (P) OAUZ2022E (P)	
HARVIE MISS FRANCIS 47F FC234929 OACR4929E (D)		EC LADY DUKE 2022 P (P) PED-2022E (P)	
Sire: DSK HJ EXPRESS E75E (AI) (ET) (P) DSKE75E (P)		Dam: DSK ND FLOSSY E025E (AI) (ET) (P) DSKE25E (P)	
BCJ PETER PATRIATION 5P IACB6077E (H)		PINNAROO RED RULER (AI) (ET) BAAP89F (H)	
PALGROVE ESTELLA 31 (AI) (ET) PKN230E (H)		PINNAROO RED FAIRY FLOSS R/F BAAS74E (D)	
PALGROVE ESTELLA 7 PKE101D (H)		PINNAROO NOBLE LADY (AI) BAAN102E	

A long bodied bull with a strong top line which we expect from Express sons. Dam, E25 is a top cow with loads of softness and great udder and has another top calf this year.

CALVING EASE		June 2015 Australasian Charolais GROUP BREEDPLAN															
	CED	DTRS	GL	BW	200	400	600	MCWT	MILK	SS	DTC	CWT	EMA	RIB	RUMP	RBY%	IMF%
EBV	1.1	1.5	-	0.6	16	35	49	-	11	1.9	-	-	2.2	-0.7	-0.8	1	0.3
Acc	42%	37%	-	70%	60%	61%	67%	-	43%	72%	-	-	46%	48%	47%	47%	45%

Traits Observed: CE,BWT,200WT,600WT(x2),SS,FAT,EMA,IMF

Purchaser:

Price:

Lot 33	DSK RSMK JOINER J5E (AI) (P) (R/F)	CHAROLAIS	Animal ID: DSKJ5E
Born: 24/08/2013	Group; 1	Red factor Polled	Registered
THOMAS OAHE WIND 0722ET P PED-2717E (H)		LT WESTERN SPUR 2061 PLD M645785 (P) OAUW2061E (P)	
TR SMOKEONTHEWATER ET PED-545E (H)		LT WESTERN EDGE 4057 PLD M686616 (P) OAUZ6616E (P)	
THOMASSWISSERSWEET1764ET PED-9932E (H)		LT DUCHESS OF MAC 7076 P PED-2993E (H)	
Sire: TR RED SMOKE PMC316641 (P) (R/F) OAUB6641E (P)		Dam: DSK EDGE FLOSSY F1E (AI) (ET) (P) DSKF1E (P)	
THREE TREES ADVANTAGE ET PED-9613E (H)		PINNAROO RED RULER (AI) (ET) BAAP89F (H)	
THOMAS MS ADVANTAGE 2621 PED-9316E (H)		PINNAROO RED FAIRY FLOSS R/F BAAS74E (D)	
TR MS BONANZA 9648 PED-9697E (H)		PINNAROO NOBLE LADY (AI) BAAN102E	

J5E displays lots of thickness with outstanding carcass. Should produce early maturing progeny with extra thickness and carcass.

CALVING EASE		June 2015 Australasian Charolais GROUP BREEDPLAN															
	CED	DTRS	GL	BW	200	400	600	MCWT	MILK	SS	DTC	CWT	EMA	RIB	RUMP	RBY%	IMF%
EBV	9	8.3	-5	-2.7	7	17	10	-	15	1.4	-	-	0.1	1.9	2.9	-1.2	-0.1
Acc	44%	37%	68%	61%	62%	61%	67%	-	44%	72%	-	-	46%	50%	49%	48%	45%

Traits Observed: GL,BWT,200WT,600WT(x2),SS,FAT,EMA,IMF

Purchaser:

Price:

Lot 34	DSK ME JORDY J56E (P) (R/F)	CHAROLAIS	Animal ID: DSKJ56E
Born: 06/11/2013	Group; 1	Red factor Polled	Registered
MINNIE VALE SUNDANCE SGSS31E (H)		TREPIDENT OAFX8582F	
MOONGOOL WINCHESTER DP2W300E (H)		INDIANA OAFN393F	
MOONGOOL LINDA DP2P25E (H)		TRISTESSE PED-5882F	
Sire: MOONGOOL ENCORE (P) DP2E438E (P)		Dam: DSK INDI FLOSSY G23E (AI) (ET) (R/F) DSKG23E (D)	
STANTON CASTLEWOOD JMDP12E		PINNAROO RED RULER (AI) (ET) BAAP89F (H)	
TEMANA GLORIA V14 TJV14E		PINNAROO RED FAIRY FLOSS R/F BAAS74E (D)	
ALLEDNAW GLORIA AKG4D		PINNAROO NOBLE LADY (AI) BAAN102E	

Red factor polled bull with a lot of carcass and softness which we expect from Encore progeny. Dam, G23 is an ET daughter of our mighty donor dam, S74 who has sold sons to \$15,000.

CALVING EASE		June 2015 Australasian Charolais GROUP BREEDPLAN															
	CED	DTRS	GL	BW	200	400	600	MCWT	MILK	SS	DTC	CWT	EMA	RIB	RUMP	RBY%	IMF%
EBV	-3.4	-4.1	-	0.7	12	31	32	-	11	0.8	-	-	2.6	-0.5	-0.9	1.1	-0.2
Acc	38%	32%	-	69%	60%	62%	66%	-	40%	70%	-	-	44%	45%	44%	46%	42%

Traits Observed: CE,BWT,200WT,400WT,600WT,SS,FAT,EMA,IMF

Purchaser:

Price:







Lot 13 DSK J122E



Lot 14 DSK J8E



Lot 15 DSK J4E



Lot 17 DSK J27E



Lot 19 DSK J44E



Lot DSK J54E



Lot 33 DSK J5E



Lot 34 DSK J56E



Lot 35

DSK AGA KHAN KEN K1E (AI) (ET)

Born: 13/02/2014

Group; 3

CHAROLAIS

White

Dehorned

Animal ID: DSKK1E

Registered

KENTUCKY ZZFX1441F

ORGANDI 16867 ZZFX2116F

EMMA ZZFX886F

Sire: AGA KHAN 58693 A38 IAFA6019F

NARCISSE ZZFX1070F

PERLE ZZFX757F

MARQUISE ZZFX469F

SCHURRTOP 5627 PED-5627E (H)

LT WYOMING WIND 4020 PLD (P) OAUP4020E (P)

LT CHAP'S LADY 217 OP PED-2170E (H)

Dam: DSK WW ESTELLE B9E (AI) (P) DSKB9E (P)

INDIANA OAFN393F

DSK INDY ESTELLE Z12E (AI) DSKZ12E (H)

PALGROVE ESTELLA 31 (AI) (ET) PKN230E (H)

Plenty of muscle shape in this young French influenced bull from our standout donor dam, B9. Aga Khan was an early sire used in the Charolais breed and he produced some top females.

CALVING EASE June 2015 Australasian Charolais GROUP BREEDPLAN																	
	CED	DTRS	GL	BW	200	400	600	MCWT	MILK	SS	DTC	CWT	EMA	RIB	RUMP	RBY%	IMF%
EBV	-0.4	-5.1	0.8	0.7	8	12	14	20	3	1.2	-	-	2.5	0.3	0.4	0.9	-0.2
Acc	56%	54%	61%	71%	64%	65%	64%	62%	60%	69%	-	-	52%	52%	52%	53%	50%

Traits Observed: BWT,400WT(x2),SS,FAT,EMA,IMF

Purchaser: Price:

Lot 36

DSK AGA KHAN KLAN K14E (AI) (ET)

Born: 18/02/2014

Group; 3

CHAROLAIS

White

Dehorned

Animal ID: DSKK14E

Registered

KENTUCKY ZZFX1441F

ORGANDI 16867 ZZFX2116F

EMMA ZZFX886F

Sire: AGA KHAN 58693 A38 IAFA6019F

NARCISSE ZZFX1070F

PERLE ZZFX757F

MARQUISE ZZFX469F

SCHURRTOP 5627 PED-5627E (H)

LT WYOMING WIND 4020 PLD (P) OAUP4020E (P)

LT CHAP'S LADY 217 OP PED-2170E (H)

Dam: DSK WW ESTELLE B9E (AI) (P) DSKB9E (P)

INDIANA OAFN393F

DSK INDY ESTELLE Z12E (AI) DSKZ12E (H)

PALGROVE ESTELLA 31 (AI) (ET) PKN230E (H)

Full brother to Lot 35 and very similar showing the consistency in the flush. Full sisters are top young heifers for us. Will increase muscle content and weight in his progeny.

CALVING EASE June 2015 Australasian Charolais GROUP BREEDPLAN																	
	CED	DTRS	GL	BW	200	400	600	MCWT	MILK	SS	DTC	CWT	EMA	RIB	RUMP	RBY%	IMF%
EBV	3	-4	0.2	0	9	14	15	21	4	1.5	-	-	2.1	0.4	0.7	0.3	0.1
Acc	56%	54%	61%	71%	64%	65%	64%	62%	60%	69%	-	-	52%	52%	52%	53%	50%

Traits Observed: BWT,400WT(x2),SS,FAT,EMA,IMF

Purchaser: Price:

Lot 37

DSK HJ KLUNY K4E (AI) (ET) (P/S)

Born: 17/02/2014

Group; 3

CHAROLAIS

White

Scurred

Animal ID: DSKK4E

Registered

DEER CREEKS ROMERO 5C PED-3436E (H)

LANG'S ERIC THE RED 3E (P/S) PED-8117E (S)

CHARLANG DUCHESS 272 (P/S) PED-5995E (S)

Sire: HARVIE JAGER 65J PMC228759 (P) OACU8759E (P)

HARVIE DOMINATION 83D PED-4006E (D)

HARVIE MISS FRANCIS 47F FC234929 OACR4929E (D)

PAR MISS 13B PED-1474E (D)

AVERLAIS HORN VAH23E

AVERLAIS PHIL VAP85E (H)

AVERLAIS JYNX VAJ15E

Dam: RIVERGLEN T1859 JDST1859E (H)

RIVERGLEN K60F JDSK60F

RIVERGLEN Q857 JDSQ857E

RIVERGLEN L952D JDSL952D

Our pick of these 3 wonderful ET brother from this donor cow from the Advance Charolais herd which we flushed due to the outstanding females she had produced. As our pick, K4 was used on our Autumn Charolais stud heifers only coming out on the 17th July which will mean his scans and weights will be lower. Don't overlook this young sire as he is our pick.

CALVING EASE June 2015 Australasian Charolais GROUP BREEDPLAN																	
	CED	DTRS	GL	BW	200	400	600	MCWT	MILK	SS	DTC	CWT	EMA	RIB	RUMP	RBY%	IMF%
EBV	4.8	0.4	-	-0.1	17	35	40	30	7	2.4	-	-	1.3	-0.4	-0.3	0.5	0.1
Acc	38%	35%	-	67%	61%	64%	62%	60%	54%	70%	-	-	44%	45%	44%	46%	42%

Traits Observed: BWT,400WT(x2),SS,FAT,EMA,IMF

Purchaser: Price:

Lot 38

DSK HJ KRUGER K6E (AI) (ET)

Born: 15/02/2014

Group; 3

CHAROLAIS

White

Dehorned

Animal ID: DSKK6E

Registered

DEER CREEKS ROMERO 5C PED-3436E (H)

LANG'S ERIC THE RED 3E (P/S) PED-8117E (S)

CHARLANG DUCHESS 272 (P/S) PED-5995E (S)

Sire: HARVIE JAGER 65J PMC228759 (P) OACU8759E (P)

HARVIE DOMINATION 83D PED-4006E (D)

HARVIE MISS FRANCIS 47F FC234929 OACR4929E (D)

PAR MISS 13B PED-1474E (D)

AVERLAIS HORN VAH23E

AVERLAIS PHIL VAP85E (H)

AVERLAIS JYNX VAJ15E

Dam: RIVERGLEN T1859 JDST1859E (H)

RIVERGLEN K60F JDSK60F

RIVERGLEN Q857 JDSQ857E

RIVERGLEN L952D JDSL952D

Like peas in a pod these 3 full ET brothers showing the consistency of the mating. Moderate frame, high muscle content with finishing ability in a very correct frame. Full ET brothers lots 37 and 40.

CALVING EASE June 2015 Australasian Charolais GROUP BREEDPLAN																	
	CED	DTRS	GL	BW	200	400	600	MCWT	MILK	SS	DTC	CWT	EMA	RIB	RUMP	RBY%	IMF%
EBV	-2.4	-1.7	-	1	19	38	43	37	6	1.5	-	-	1.5	0.1	0.3	0.2	0.3
Acc	38%	35%	-	67%	61%	64%	62%	60%	54%	70%	-	-	44%	45%	44%	46%	42%

Traits Observed: BWT,400WT(x2),SS,FAT,EMA,IMF

Purchaser: Price:

Lot 39	DSK EXP KERMIT K21E (AI) (P)	CHAROLAIS	Animal ID: DSKK21E
Born: 7/05/2014	Group; 3	White Polled	Registered
LANG'S ERIC THE RED 3E (P/S) PED-8117E (S) HARVIE JAGER 65J PMC228759 (P) OACU8759E (P) HARVIE MISS FRANCIS 47F FC234929 OACR4929E (D)		SCHURRTOP 5627 PED-5627E (H) LT WYOMING WIND 4020 PLD (P) OAUP4020E (P) LT CHAP'S LADY 217 OP PED-2170E (H)	
Sire: DSK HJ EXPRESS E75E (AI) (ET) (P) DSKE75E (P) BCJ PETER PATRIATION 5P IACB6077E (H) PALGROVE ESTELLA 31 (AI) (ET) PKN230E (H) PALGROVE ESTELLA 7 PKE101D (H)		Dam: DSK WW ESTELLE B9E (AI) (P) DSKB9E (P) INDIANA OAFN393F DSK INDY ESTELLE Z12E (AI) DSKZ12E (H) PALGROVE ESTELLA 31 (AI) (ET) PKN230E (H)	

The youngest bull in the Charolais draft with plenty of muscle with a smooth long pattern. Dam, B9 has produced top bulls in the past including a class winner at the Sydney Royal Charolais feature show in 2013. Dam also has 2 Aga Khan ET sons that are lots 35 and 36.

CALVING EASE		June 2015 Australasian Charolais GROUP BREEDPLAN															
	CED	DTRS	GL	BW	200	400	600	MCWT	MILK	SS	DTC	CWT	EMA	RIB	RUMP	RBY%	IMF%
EBV	-1.6	1.4	-0.4	1.4	15	33	45	-	6	1.8	-	-	-	-	-	-	-
Acc	45%	40%	51%	58%	52%	52%	53%	-	48%	51%	-	-	-	-	-	-	-

Traits Observed: BWT,200WT

Purchaser:

Price:

Lot 40	DSK HJ KLUTZ K13E (AI) (ET) (P/S)	CHAROLAIS	Animal ID: DSKK13E
Born: 16/02/2014	Group; 3	Cream Scurred	Registered
DEER CREEKS ROMERO 5C PED-3436E (H) LANG'S ERIC THE RED 3E (P/S) PED-8117E (S) CHARLANG DUCHESS 272 (P/S) PED-5995E (S)		AVERLAIS HORN VAH23E AVERLAIS PHIL VAP85E (H) AVERLAIS JYNX VAJ15E	
Sire: HARVIE JAGER 65J PMC228759 (P) OACU8759E (P) HARVIE DOMINATION 83D PED-4006E (D) HARVIE MISS FRANCIS 47F FC234929 OACR4929E (D) PAR MISS 13B PED-1474E (D)		Dam: RIVERGLEN T1859 JDST1859E (H) RIVERGLEN K60F JDSK60F RIVERGLEN Q857 JDSQ857E RIVERGLEN L952D JDSL952D	

Full ET brothers to lot 37 and lot 38. Showing the same muscle content with smoothness and finishing ability.

CALVING EASE		June 2015 Australasian Charolais GROUP BREEDPLAN															
	CED	DTRS	GL	BW	200	400	600	MCWT	MILK	SS	DTC	CWT	EMA	RIB	RUMP	RBY%	IMF%
EBV	2.1	-0.4	-	0.1	16	31	37	27	6	2.7	-	-	0.9	-0.4	-0.2	0.2	0.3
Acc	38%	35%	-	67%	61%	64%	62%	60%	54%	70%	-	-	44%	45%	44%	46%	42%

Traits Observed: BWT,400WT(x2),SS,FAT,EMA,IMF

Purchaser:

Price:

Lot 41	DSK G2 JOHN J92	ANGUS	Animal ID: NKSJ92
Born: 15/12/2013	Group; 1	HBR Genetic Status:	AMFU, NHFU, CAFU, DDFU
PACK POWER SCOTCH CAP 889(ET) USA889 MERRIDALE PACK-N-POWER A46(AI)(ET) CMDA46 MERRIDALE MILDRED S16(AI)(ET) CMDS16		HOFF LIMITED EDITION S C 594 USA13119152 DSK HLE ATOMIC BIG EARS A99(AI)(ET) NKSA99 DSK PM PANDA R3 NKS R3	
Sire: DSK BN GEORGE G2(AI) NKSG2 HOFF ULTRA S C 108 USASC108 DSK HU PANDA W9(AI)(ET) NKSW9 DSK PM PANDA R3 NKS R3		Dam: DSK ABE MAORI MAID D64 NKSD64 R R SCOTCHCAP 9440 USA9440 PALES 9440 MAORI MAID T34(AI) NJUT34 PALES 2005 MAORI MAID Q161(AI)(ET) NJUQ161	

J92 shows good profile with length and strength of spine which was a trait from his sire G2. Dam, D64 is a cross of 2 Royal Grand Champion females. A good sire for a self replacing operation due to his high maternal strength.

CALVING EASE		July 2015 Angus Australia BREEDPLAN															
	CED	DTRS	GL	BW	200	400	600	MCWT	MILK	SS	DTC	CWT	EMA	RIB	RUMP	RBY%	IMF%
EBV	-1.4	-0.4	-	5.9	39	77	98	98	13	1.8	-	56	1.6	-1.4	-0.7	0.3	1
Acc	38%	29%	-	60%	62%	62%	66%	58%	44%	65%	-	52%	50%	51%	53%	46%	43%

Traits Observed: CE,200WT,400WT,600WT,SS,FAT,EMA,IMF

Purchaser:

Price:

Lot 42	DSK G2 JONESY J73	ANGUS	Animal ID: NKSJ73
Born: 14/11/2013	Group; 1	HBR Genetic Status:	AMFU, NHFU, CAFU, DD11%
PACK POWER SCOTCH CAP 889(ET) USA889 MERRIDALE PACK-N-POWER A46(AI)(ET) CMDA46 MERRIDALE MILDRED S16(AI)(ET) CMDS16		B/R NEW DESIGN 323 USA323 AVONLEE WEAPON W13(AI)(ET) BKTW13 SPARTA TIARA L50+91 NMKL50+91	
Sire: DSK BN GEORGE G2(AI) NKSG2 HOFF ULTRA S C 108 USASC108 DSK HU PANDA W9(AI)(ET) NKSW9 DSK PM PANDA R3 NKS R3		Dam: DSK W13 ERINETTE A70 NKSA70 J R JUICE 2005 USA2005 PALES 2005 ERINETTE R11(AI)(ET) NJUR11 BLACK VELVET ERINETTE H1+88(AI) WZJH1+88	

J73 displays plenty of length with smoothness which is a trait from his sire. Good maternal pedigree with 323 and Juice. Suitable on heifers.

CALVING EASE		July 2015 Angus Australia BREEDPLAN															
	CED	DTRS	GL	BW	200	400	600	MCWT	MILK	SS	DTC	CWT	EMA	RIB	RUMP	RBY%	IMF%
EBV	0.1	-0.7	-2.8	5.2	37	72	94	96	8	0.5	-	50	2	-1	-0.2	-0.2	1.1
Acc	38%	29%	51%	70%	64%	64%	68%	60%	47%	66%	-	53%	51%	52%	53%	47%	44%

Traits Observed: CE,BWT,200WT,400WT,600WT,SS,FAT,EMA,IMF

Purchaser:

Price:

Lot 43
DSK LG JURY DUTY J100
 Born: 28/11/2013
 G A R SOLUTION(ET) USA1422615
 LAWSONS INVINCIBLE C402(AI) VLYC402
 LAWSONS PREDESTINED A598(AI) VLYA598
Sire: LAWSONS INVINCIBLE G10(AI) VLYG10
 LAWSONS DINKY-DI Z191(AI)(ET) VLYZ191
 LAWSONS DINKY DI D971(AI) VLYD971
 LAWSONS BUSHWACKER Z428(AI)(ET) VLYZ428

ANGUS
Genetic Status:
 SUMMITCREST SCOTCH CAP OB45 USAOB45
 GARDENS HIGHMARK USA13047487
 GREEN GARDEN PRIDE 6128 S1 USA6128
Dam: DSK GHM KERRY C88(AI) NKSC88
 DSK HR XTRA X1(AI)(ET) NK SX1
 DSK X1 KERRY A91 NKSA91
 DSK AT KERRY V65(AI) NKSV65

HBR
Animal ID: NKSJ100
 AM7%, NHFU, CAFU, DD7%

Good fleshing down the lower thigh and good carcase EBV plus plenty of growth figures. From a good and consistent breeding High Mark cow. Suitable on heifers.

CALVING EASE July 2015 Angus Australia BREEDPLAN																	
	CED	DTRS	GL	BW	200	400	600	MCWT	MILK	SS	DTC	CWT	EMA	RIB	RUMP	RBY%	IMF%
EBV	0.1	-2	-2.6	5.2	46	83	116	101	15	1.7	-3.8	63	5.1	-0.2	0.3	0.1	2.3
Acc	43%	38%	55%	70%	64%	65%	69%	62%	45%	68%	38%	55%	54%	55%	56%	51%	48%

Purchaser:

Traits Observed: CE,BWT,200WT,400WT,600WT,SS,FAT,EMA,IMF
 Price:

Lot 44
DSK RR JIMMY B J19(AI)
 Born: 24/08/2013
 VERMILION DATELINE 7078 USA7078
 REMITALL NIGHTHAWK 37N CAN1171920
 DIAMOND D EVERA 073G CAN944010
Sire: REMITALL H RACHIS 21R CAN1274555
 O G L BATTLE CRY 427 128 USA12215320
 HENDERSON MISSIE 32'02 CAN1122972
 HENDERSON MISIE 2'97 CAN890141

ANGUS
Genetic Status:
 PACK POWER SCOTCH CAP 889(ET) USA889
 MERRIDALE PACK-N-POWER A46(AI)(ET) CMDA46
 MERRIDALE MILDRED S16(AI)(ET) CMDS16
Dam: DSK PNP MAORI MAID G116 NKSG116
 DSK HLE ATOMIC BIG EARS A99(AI)(ET) NKSA99
 DSK ABE MAORI MAID D64 NKSD64
 PALES 9440 MAORI MAID T34(AI) NJUT34

HBR
Animal ID: NKSJ19
 AMFU, NHFU, CAFU, DDFU

Heifers first calf. Moderate framed and easy doing. Full of muscle which is typical of Rachis progeny. From the Maori Maid line which originated from a Royal Show Grand Champion female.

CALVING EASE July 2015 Angus Australia BREEDPLAN																	
	CED	DTRS	GL	BW	200	400	600	MCWT	MILK	SS	DTC	CWT	EMA	RIB	RUMP	RBY%	IMF%
EBV	-1.1	-0.4	-1.8	5.2	43	81	93	89	14	1.2	-	56	0.3	0.1	1.1	-0.2	0.7
Acc	39%	28%	80%	72%	66%	64%	69%	61%	48%	67%	-	53%	52%	52%	54%	47%	44%

Purchaser:

Traits Observed: GL,CE,BWT,200WT,600WT(x2),SS,FAT,EMA,IMF
 Price:

Lot 45
DSK G2 JAMIESON J81
 Born: 24/11/2013
 PACK POWER SCOTCH CAP 889(ET) USA889
 MERRIDALE PACK-N-POWER A46(AI)(ET) CMDA46
 MERRIDALE MILDRED S16(AI)(ET) CMDS16
Sire: DSK BN GEORGE G2(AI) NKSG2
 HOFF ULTRA S C 108 USASC108
 DSK HU PANDA W9(AI)(ET) NKSW9
 DSK PM PANDA R3 NKSR3

ANGUS
Genetic Status:
 HYLINE RIGHT TIME 338(ET) USA13058662
 HYLINE RIGHT WAY 781 USA14037894
 HYLINE ELLEN 86 USA86
Dam: DSK HRW FLOWER B51(AI) NKSB51
 PACK POWER SCOTCH CAP 889(ET) USA889
 GLENOCH FLOWER M10(AI) QBGM10
 GLENOCH FLOWER G1 QBGG1+87

HBR
Animal ID: NKSJ81
 AMFU, NHFU, CAFU, DDFU

J81 is another G2 son showing strength of spine and smooth shoulders. Dam, B51 has been a top producer with s son selling to Palgrove for their Ultra Black programme. Suitable for heifers.

CALVING EASE July 2015 Angus Australia BREEDPLAN																	
	CED	DTRS	GL	BW	200	400	600	MCWT	MILK	SS	DTC	CWT	EMA	RIB	RUMP	RBY%	IMF%
EBV	-1.6	0.2	-1.2	5.7	39	76	98	95	12	2.1	0	55	2.8	-2.4	-2.2	1.4	1.1
Acc	41%	33%	58%	70%	64%	65%	68%	61%	48%	67%	36%	54%	52%	51%	54%	47%	44%

Purchaser:

Traits Observed: CE,BWT,200WT,400WT,600WT,SS,FAT,EMA,IMF
 Price:

Lot 46
DSK KG JONES J104
 Born: 14/12/2013
 CONNEALY ONWARD USA14216491
 SITZ UPWARD 307R USA14963730
 SITZ HENRIETTA PRIDE 81M USA14087650
Sire: KANSAS UPWARD G198(AI) NKLG198
 BON VIEW NEW DESIGN 1407 USA1407
 KANSAS ANNIE Y656(AI)(ET) NKLY656
 AMAROO EXPO ANNIE U024(AI)(ET) BYEU024

ANGUS
Genetic Status:
 HOFF ULTRA S C 108 USASC108
 DSK HU ZEUS Z10(AI)(ET) NK SZ10
 DSK PM PANDA R3 NKSR3
Dam: DSK Z10 ABIGAIL D139 NKSD139
 DUNOON REAGAN V131 BHRV131
 DSK V131 ABIGAIL Y11 NKSY11
 DSK WB ABIGAIL P26 NKSP26

HBR
Animal ID: NKSJ104
 AMFU, NHFU, CAFU, DD14%

This young December born bull shows a lot of breed character with a strong spine and masculine, powerful head. The maternal side goes back to P26 who was an outstanding Willyboy daughter who bred exceptionally well. The sire of dam, D139 is a full ET brother to our amazing donor dam and best breeder, W9. Suitable for heifers.

CALVING EASE July 2015 Angus Australia BREEDPLAN																	
	CED	DTRS	GL	BW	200	400	600	MCWT	MILK	SS	DTC	CWT	EMA	RIB	RUMP	RBY%	IMF%
EBV	0	-1.1	-	4.2	41	74	95	82	17	1.5	-	55	4.1	-0.3	-0.7	0.7	1
Acc	37%	29%	-	60%	62%	62%	66%	58%	42%	65%	-	52%	51%	52%	53%	47%	44%

Purchaser:

Traits Observed: CE,200WT,400WT,600WT,SS,FAT,EMA,IMF
 Price:

Lot 47
DSK 465T SLY JOE J28(AI)(ET)
 Born: 10/09/2013 Group; **1**

ANGUS HBR
Genetic Status:
 AMFU, NHFU, CAC, DDFU

Animal ID: NKSJ28

KRUEGERS FOOLISH PRIDE USA29874
 SHADYMER FREEDOM 3JS USA3JS
 FREESTATE BARBARA 871 OF KAF USA9163301
Sire: RAMBO 465T OF J R S USA465T
 BASIN Q BAR 163 USA7954
 J R S PRIDE LADY 171M USA171M
 PRIDE LADY 623 G D A R USA14292

SAYRE PATRIOT USA9000000
 BURTHLENE PATRIOT 47M CAN47M
 GLEN ISLAY BLACKBIRD 9J CAN471303
Dam: NO.1 HOT STUFF 1ST M14(AI)(ET) WSPM14
 SIR WMS WAMPUM CAN420D
 NO.1 HOT STUFF+88(AI) WSPH1+88
 NO.1 HOT DOT F1. WSPF1+86

Old genetics here from one of our original donor dams. Very suitable on heifers. We have used 2 full ET brothers on heifers in the past with no problems and producing progeny that excell in weight gain in the National Field Days Steer Trials held at Orange in 2009.

CALVING EASE July 2015 Angus Australia BREEDPLAN																	
	CED	DTRS	GL	BW	200	400	600	MCWT	MILK	SS	DTC	CWT	EMA	RIB	RUMP	RBY%	IMF%
EBV	-1.2	-0.5	0.9	4.3	29	47	53	48	9	0.9	-0.8	40	2	-1.4	0.1	0	0.6
Acc	59%	55%	63%	73%	69%	69%	71%	68%	65%	69%	57%	64%	62%	63%	64%	61%	59%

Traits Observed: BWT,200WT,600WT(x2),SS,FAT,EMA,IMF
 Purchaser: Price:

Lot 48
DSK LG JAMES J51
 Born: 05/10/2013 Group; **1**

ANGUS HBR
Genetic Status:
 AM7%, NHFU, CAFU, DD7%

Animal ID: NKSJ51

G A R SOLUTION(ET) USA1422615
 LAWSONS INVINCIBLE C402(AI) VLYC402
 LAWSONS PREDESTINED A598(AI) VLYA598
Sire: LAWSONS INVINCIBLE G10(AI) VLYG10
 LAWSONS DINKY-DI Z191(AI)(ET) VLYZ191
 LAWSONS DINKY DI D971(AI) VLYD971
 LAWSONS BUSHWACKER Z428(AI)(ET) VLYZ428

V D A R NEW TREND 315 USA315
 DSK 315 MR EFFICIENT U14(AI) NKSU14
 TRANGIE K391+90 NDAK391+90
Dam: DSK MRE POLLY X108 NKSX108
 TE MANIA KINGSTON+90(AI)(ET) VTMK266+90
 DSK POLLY Q9 NKSQ9
 KOOJAN HILLS KUMAI H69+88 WKHH69+88

Good bull who had strong scan data on 5th June. Long bull with neck extension which is important for retaining good cows and calving ease. Suitable for heifers.

CALVING EASE July 2015 Angus Australia BREEDPLAN																	
	CED	DTRS	GL	BW	200	400	600	MCWT	MILK	SS	DTC	CWT	EMA	RIB	RUMP	RBY%	IMF%
EBV	0.5	-1.1	-	4.3	34	62	84	76	10	2.2	-	43	3.4	0.4	0.7	-0.2	2
Acc	39%	33%	-	69%	63%	64%	68%	60%	44%	67%	-	53%	52%	53%	55%	49%	45%

Traits Observed: CE,BWT,200WT,400WT,600WT,SS,FAT,EMA,IMF
 Purchaser: Price:

Lot 49
DSK NT315 G23 JOKER J9(AI)(ET)
 Born: 20/04/2013 Group; **1**

ANGUS HBR
Genetic Status:
 AMFU, NHFU, CA21%, DDFU

Animal ID: NKSJ9

V D A R SHOSHONE 548 USA9389
 A A R NEW TREND USA9958
 DONNA A A R 74 USA8324
Sire: V D A R NEW TREND 315 USA315
 P S POWER PLAY USA8974207
 V D A R LUCY 704 USA1028
 V D A R SHOSHONE LUCY 605 USA9897

PREMIER INDEPENDENCE K N USA1871
 ONEILLS RENOVATOR USA2943
 ONEILLS ERLINE 42 USA42
Dam: DULVERTON KERRY G23(AI) NGCG23+87
 THOLOGOLONG THINK TWICE. VSTB4+82
 DULVERTON KERRY E6.(AI) NGCE6+85
 BROOKFIELD PARK KERRY Y79. NLXY79+79

Old genetics here from frozen embryos we made over 20 years ago from one of our original foundation donor dams who produced top progeny. J9 has a top full ET sibling heifer retained in the stud. J9 is on the bottom of the pecking order in the main bull mob and has suffered during his earlier feeding programme. Has made great inroads since being on oats.

CALVING EASE July 2015 Angus Australia BREEDPLAN																	
	CED	DTRS	GL	BW	200	400	600	MCWT	MILK	SS	DTC	CWT	EMA	RIB	RUMP	RBY%	IMF%
EBV	-0.1	0.3	-1.5	5.3	26	47	63	46	11	1.5	-3	30	2.1	-0.3	0.2	0.4	1.3
Acc	58%	56%	61%	62%	62%	62%	62%	60%	63%	58%	57%	59%	58%	59%	59%	58%	57%

Traits Observed: BWT,400WT,600WT(x2),SS,FAT,EMA,IMF
 Purchaser: Price:

Lot 50
DSK HJ JAGGED J30E (AI) (ET) (P) (R/F)
 Born: 7/10/2013 Group; **1**

CHAROLAIS
 Red factor Polled
Genetic Status:
 Registered

Animal ID: DSKJ30E

DEER CREEKS ROMERO 5C PED-3436E (H)
 LANG'S ERIC THE RED 3E (P/S) PED-8117E (S)
 CHARLANG DUCHESS 272 (P/S) PED-5995E (S)
Sire: HARVIE JAGER 65J PMC228759 (P) OACU8759E (P)
 HARVIE DOMINATION 83D PED-4006E (D)
 HARVIE MISS FRANCIS 47F FC234929 OACR4929E (D)
 PAR MISS 13B PED-1474E (D)

GUNNADOO KING K144D GN1K144D (H)
 GUNNADOO NUGGET N166D R/F GN1N166D (D)
 PALGROVE BRIDGETTE 2 PKB2D (H)
Dam: DSK GN JULIETTE U1E (AI) (P) DSKU1E (P)
 ST ANTONIO BRUCE LEE (P) MGBN3E (P)
 ST ANTONIO JULIETTE (P) MGBS2E (P)
 MANDALONG RANCHES K50E RPK50E (H)

Red factor polled bull from our easy doing donor in U1 who was the dam of Red Emperor who sold to Moongool Charolais stud for \$19,000.

CALVING EASE June 2015 Australasian Charolais GROUP BREEDPLAN																	
	CED	DTRS	GL	BW	200	400	600	MCWT	MILK	SS	DTC	CWT	EMA	RIB	RUMP	RBY%	IMF%
EBV	-0.4	1.6	-1.9	0.2	21	38	42	-	2	2.6	-	-	1.6	-0.2	0.1	0.3	0.2
Acc	48%	43%	54%	67%	57%	56%	58%	-	55%	50%	-	-	37%	42%	42%	40%	36%

Traits Observed: BWT,200WT,600WT(x2),SS,FAT,EMA,IMF
 Purchaser: Price:

Lot 51	DSK ME JUROR J64E (R/F)	CHAROLAIS	Animal ID: DSKJ64E
Born: 08/11/2013	Group; 1	Red factor Dehorned	Registered
MINNIE VALE SUNDANCE SGSS31E (H)		LT WESTERN SPUR 2061 PLD M645785 (P) OAU2061E (P)	
MOONGOOL WINCHESTER DP2W300E (H)		LT WESTERN EDGE 4057 PLD M686616 (P) OAU26616E (P)	
MOONGOOL LINDA DP2P25E (H)		LT DUCHESS OF MAC 7076 P PED-2993E (H)	
Sire: MOONGOOL ENCORE (P) DP2E438E (P)		Dam: DSK EGDE JULIETTE E10E (AI) (ET) (P) (R/F) DSKE10E (P)	
STANTON CASTLEWOOD JMDP12E		GUNNADOO NUGGET N166D R/F GN1N166D (D)	
TEMANA GLORIA V14 TJV14E		DSK GN JULIETTE U1E (AI) (P) DSKU1E (P)	
ALLEDNAW GLORIA AKG4D		ST ANTONIO JULIETTE (P) MGBS2E (P)	

An attractive long bodied red factor bull from an impressive female line with Grand Dam U1 being to dam of Red Emperor who sold to Moongool stud for \$19,000

CALVING EASE	June 2015 Australasian Charolais GROUP BREEDPLAN																
	CED	DTRS	GL	BW	200	400	600	MCWT	MILK	SS	DTC	CWT	EMA	RIB	RUMP	RBY%	IMF%
EBV	-1	0.4	-	-0.5	8	24	27	-	11	1.9	-	-	1	0.1	0.3	0	-0.1
Acc	40%	32%	-	71%	61%	64%	67%	-	40%	71%	-	-	46%	49%	48%	49%	45%

Traits Observed: CE,BWT,200WT,400WT,600WT,SS,FAT,EMA,IMF

Purchaser:

Price:

Lot 52	DSK PIN JUGGERNAUGHT J19E (AI) (ET)	CHAROLAIS	Animal ID: DSKJ19E
Born: 12/09/2013	Group; 1	White Dehorned	Registered
BLASON 4286100325 PEDX286F (H)		AYR HUELVA'S HUSTLER (AI) AYRT100E	
IMPAIR OAFN189F		DSK RED EMPEROR Y13E (P) (R/F) DSKY13E (P)	
OFFICINE PED-945F (H)		DSK GN JULIETTE U1E (AI) (P) DSKU1E (P)	
Sire: PINAY 8552394134 OAFU4134F (H)		Dam: DSK RE WENDY C31E (P) (R/F) DSKC31E (P)	
HOMERE PED-7561F (H)		LT WYOMING WIND 4020 PLD (P) OAP4020E (P)	
MARY OAFR8596F (H)		DSK WW WENDY A10E (AI) (ET) (P) DSKA10E (P)	
JACINTHE PED-4550F (H)		PINNAROO RED TRENDIE R/F BAAS81E (D)	

Top commercial sire here to add muscle and substance to his progeny. Strong muscle pattern with finishing ability. J19E should put extra value into his progeny with thickness and capacity making extra weight.

CALVING EASE	June 2015 Australasian Charolais GROUP BREEDPLAN																
	CED	DTRS	GL	BW	200	400	600	MCWT	MILK	SS	DTC	CWT	EMA	RIB	RUMP	RBY%	IMF%
EBV	3.9	6.4	-4.7	0.2	14	30	36	-	13	0.5	-	-	4	-0.6	-1	1.6	0.4
Acc	53%	50%	59%	67%	58%	57%	58%	-	55%	54%	-	-	46%	49%	49%	47%	45%

Traits Observed: BWT,200WT,600WT(x2),SS,FAT,EMA,IMF

Purchaser:

Price:

Lot 53	DSK PJ JUNCTION J91E (AI) (ET) (P)	CHAROLAIS	Animal ID: DSKJ91E
Born: 10/11/2013	Group; 1	White Polled	Registered
EC BRONSON 204 POLLED (P) PED-1938E (P)		WCR SIR FA MAC 2244 M 234430 (P) OAU2244E (P)	
RDGC KALAMAZOO 387F (P) PED-1257E (P)		PALGROVE MURDOCK R/F (AI) (ET) PKM109E (H)	
MISS RDGC SHEBA 1W PED-2909E (H)		PALGROVE FANCY 3 (AI) PKB9D (H)	
Sire: CS PLD JUNCTION 4J MC228742 (P) OACU8742E (P)		Dam: MOONGOOL REFINE 17 (AI) (ET) DP22210E (H)	
MNE EXCLUSIVE 17E (P) PED-9343E (P)		PALGROVE HOT SHOT (AI) PKH14E (H)	
CS EXCLUSIVE'S GUEST 5G PED-2100E (H)		PALGROVE REFINE 13 PKM20E (H)	
HTA CROCUS PLD 503E (P) PED-915E (P)		PALGROVE REFINE 6 (AI) (ET) PKH134E (H)	

Moderate framed bull with a good muscle pattern and finishing ability. Dam, Refine 17 is a big female with softness and was the dam of our Reserve Middleweight Champion steer at Sydney this year.

CALVING EASE	June 2015 Australasian Charolais GROUP BREEDPLAN																
	CED	DTRS	GL	BW	200	400	600	MCWT	MILK	SS	DTC	CWT	EMA	RIB	RUMP	RBY%	IMF%
EBV	-12.1	3.7	-2	1.6	16	34	49	-	10	1.4	-	-	0.8	0	0.2	0	0.5
Acc	48%	43%	55%	59%	60%	61%	59%	-	53%	52%	-	-	40%	45%	45%	42%	38%

Traits Observed: 200WT,400WT,600WT,SS,FAT,EMA,IMF

Purchaser:

Price:

Lot 54	DSK MTZ JACKSON J34E (AI) (P)	CHAROLAIS	Animal ID: DSKJ34E
Born: 02/10/2013	Group; 1	White Polled	Registered
HFCC PLD EVOLUTION 5L PED-6316E (H)		TREPIDENT OAFX8582F	
SVY FREEDOM PLD 307N PMC280878 (P) OACY2808E (P)		INDIANA OAFN393F	
SVY PURRFECT 184L PED-3051E (H)		TRISTESSE PED-5882F	
Sire: GERRARD MONTEZUMA 6T (P) OACC3106E (P)		Dam: DSK INDI FLOSSY G28E (AI) (ET) DSKG28E (D)	
RPJ IMPRESSED 121L PED-1923E		PINNAROO RED RULER (AI) (ET) BAAP89F (H)	
GERRARD ROXANNE 18P PED-4620E		PINNAROO RED FAIRY FLOSS R/F BAAS74E (D)	
GERRARD ROXANNE 27M PED-2435E		PINNAROO NOBLE LADY (AI) BAAN102E	

The only Montezuma son in the catalogue who sired our high scoring Charolais carcass at Sydney steer show this year. Dam, G28 has a top pedigree with dam and sire both top cow makers.

CALVING EASE	June 2015 Australasian Charolais GROUP BREEDPLAN																
	CED	DTRS	GL	BW	200	400	600	MCWT	MILK	SS	DTC	CWT	EMA	RIB	RUMP	RBY%	IMF%
EBV	-5.3	0.8	-5	1.1	13	25	33	-	4	1.9	-	-	2.2	-0.1	-0.2	1	-0.1
Acc	45%	36%	73%	71%	64%	63%	69%	-	43%	72%	-	-	50%	51%	50%	50%	50%

Traits Observed: GL,CE,BWT,200WT,600WT(x2),SS,FAT,EMA,IMF

Purchaser:

Price:

Lot 55	DSK W.E. JUST MADE IT J123E (AI) (ET) (P)	CHAROLAIS	Animal ID: DSKJ123E
Born: 18/12/2013	Group; 1	White Polled	Registered
EATONS PREDICTOR 9230 PEDJ9230E (D)		ROSEDALE QUADRELLA (AI) (ET) (P) MRQ61E (P)	
LT WESTERN SPUR 2061 PLD M645785 (P) OAU2061E (P)		WATERFORD UNCLE SAM (P) WETU30E (P)	
LT MAIDEN'S BREEZE 8242P (P) PEDT8242E (P)		2UP R634D (P) 2UPR634D (P)	
Sire: LT WESTERN EDGE 4057 PLD M686616 (P) OAUZ6616E (P)	Dam: NANDILLYAN A57E (P) FA57E (P)	MINNIE VALE THUNDERBOLT (AI) SGST19E (H)	
BBCR DUKE'S SON 786 PLD PED-7034E (H)		NANDILLYAN ZIG 8 FW3E	
LT DUCHESS OF MAC 7076 P PED-2993E (H)		NANDILLYAN T1E (P) FT1E (P)	
BBCR MAXINE 429 PED-3378E (H)			

Young top sire prospect here with a full ET brother being a class winner at Sydney show and selling to Noller Charolais stud. J123E is a very complete sire with muscle and softness.

CALVING EASE		June 2015 Australasian Charolais GROUP BREEDPLAN															
	CED	DTRS	GL	BW	200	400	600	MCWT	MILK	SS	DTC	CWT	EMA	RIB	RUMP	RBY%	IMF%
EBV	6.1	8.7	-5.3	-2	9	25	34	-	19	1.5	-	-	-0.7	1.4	1.9	-1.5	0.3
Acc	49%	43%	56%	61%	57%	58%	58%	-	54%	54%	-	-	43%	47%	46%	44%	43%

Traits Observed: 200WT,400WT,600WT,SS,FAT,EMA,IMF

Purchaser:

Price:

Lot 56	DSK G2 JERICHO J61	ANGUS	Animal ID: NKSJ61
Born: 13/11/2013	Group; 1	HBR Genetic Status:	AMFU, NHFU, CAFU, DDFU
PACK POWER SCOTCH CAP 889(ET) USA889		PACK POWER SCOTCH CAP 889(ET) USA889	
MERRIDALE PACK-N-POWER A46(AI)(ET) CMDA46		MERRIDALE PACK-N-POWER A46(AI)(ET) CMDA46	
MERRIDALE MILDRED S16(AI)(ET) CMDS16		MERRIDALE MILDRED S16(AI)(ET) CMDS16	
Sire: DSK BN GEORGE G2(AI) NKSG2	Dam: DSK P.N.P. DANDALOO E68 NKSE68	PALES HR UNADDRESSED U72(AI) NJUU72	
HOFF ULTRA S C 108 USASC108		DSK U72 DANDLOO X40 NKSX40	
DSK HU PANDA W9(AI)(ET) NKSU9		DSK Z005 DANDLOO Q27(AI) NKSQ27	
DSK PM PANDA R3 NKS3R			

A young bull with good skin and hair tyhpe and displaying lots of length of body. Maternal Grand Dam was one of our favourites. Suitable for heifers.

CALVING EASE		July 2015 Angus Australia BREEDPLAN															
	CED	DTRS	GL	BW	200	400	600	MCWT	MILK	SS	DTC	CWT	EMA	RIB	RUMP	RBY%	IMF%
EBV	0.2	-1.1	-	5.6	42	82	106	105	12	1.3	-	59	2.3	-2.2	-1.5	0.6	0.9
Acc	39%	30%	-	71%	62%	60%	65%	58%	45%	45%	-	50%	39%	41%	41%	38%	36%

Traits Observed: CE,BWT,200WT,600WT(x2),SS,FAT,EMA,IMF

Purchaser:

Price:

Lot 57	DSK LG JABEROO J43	ANGUS	Animal ID: NKSJ43
Born: 02/10/2013	Group; 1	HBR Genetic Status:	AM7%, NHFU, CAFU, DD11%
G A R SOLUTION(ET) USA1422615		AVONLEE YORKER Y19 BKTY19	
LAWSON'S INVINCIBLE C402(AI) VLYC402		COBBADAH CREEK Y19 P.FRED D149 BIQD149	
LAWSON'S PREDESTINED A598(AI) VLYA598		BOOROOMOOKA REFRESH R129(AI) NGMR129	
Sire: LAWSON'S INVINCIBLE G10(AI) VLYG10	Dam: DSK CCD ARCHER G120 NKSG120	DSK HR XTRA X1(AI)(ET) NKSX1	
LAWSON'S DINKY-DI Z191(AI)(ET) VLYZ191		DSK X1 ARCHER A93 NKSA93	
LAWSON'S DINKY DI D971(AI) VLYD971		DSK Z005 ARCHER U26(AI)(ET) NKSU26	
LAWSON'S BUSHWACKER Z428(AI)(ET) VLYZ428			

J43 has good spring of rib and extra depth. U26 on the maternal side was the top IMF and Flek score of the drop. J43 was one of the top IMF in his group. Suitable on heifers.

CALVING EASE		July 2015 Angus Australia BREEDPLAN															
	CED	DTRS	GL	BW	200	400	600	MCWT	MILK	SS	DTC	CWT	EMA	RIB	RUMP	RBY%	IMF%
EBV	1.8	-0.5	-	4	41	74	93	84	13	0.9	-	55	4.5	-0.3	-0.4	0	2.1
Acc	38%	32%	-	70%	63%	61%	67%	60%	40%	67%	-	52%	51%	50%	53%	47%	43%

Traits Observed: CE,BWT,200WT,600WT(x2),SS,FAT,EMA,IMF

Purchaser:

Price:

Lot 58	DSK LG JAZZ J90	ANGUS	Animal ID: NKSJ90
Born: 10/12/2013	Group; 1	HBR Genetic Status:	AM7%, NHFU, CA1%, DD7%
G A R SOLUTION(ET) USA1422615		PACK POWER SCOTCH CAP 889(ET) USA889	
LAWSON'S INVINCIBLE C402(AI) VLYC402		MERRIDALE PACK-N-POWER A46(AI)(ET) CMDA46	
LAWSON'S PREDESTINED A598(AI) VLYA598		MERRIDALE MILDRED S16(AI)(ET) CMDS16	
Sire: LAWSON'S INVINCIBLE G10(AI) VLYG10	Dam: DSK PNP KERRY D81 NKSD81	S V F HI ROAD USA956	
LAWSON'S DINKY-DI Z191(AI)(ET) VLYZ191		DSK HR KERRY B85(AI) NKS85	
LAWSON'S DINKY DI D971(AI) VLYD971		DSK GS KERRY W38(AI) NKS38	
LAWSON'S BUSHWACKER Z428(AI)(ET) VLYZ428			

Similar to all G10 sons with good spine and clean shoulders for calving ease. Maternal Kerry line goes back to G23 who was a foundation female from the Dulverton stud. Suitable on heifers.

CALVING EASE		July 2015 Angus Australia BREEDPLAN															
	CED	DTRS	GL	BW	200	400	600	MCWT	MILK	SS	DTC	CWT	EMA	RIB	RUMP	RBY%	IMF%
EBV	1.4	-0.5	-	4.3	44	79	106	95	12	0.9	-	59	4.1	-0.4	-0.4	0.3	1.8
Acc	40%	34%	-	70%	64%	64%	68%	61%	44%	67%	-	54%	53%	53%	55%	49%	46%

Traits Observed: CE,BWT,200WT,400WT,600WT,SS,FAT,EMA,IMF

Purchaser:

Price:

Lot 59
DSK G2 JANITOR J85
Born: 26/11/2013
PACK POWER SCOTCH CAP 889(ET) USA889
MERRIDALE PACK-N-POWER A46(AI)(ET) CMDA46
MERRIDALE MILDRED S16(AI)(ET) CMD516
Sire: DSK BN GEORGE G2(AI) NKSG2
HOFF ULTRA S C 108 USASC108
DSK HU PANDA W9(AI)(ET) NKSW9
DSK PM PANDA R3 NKSR3

ANGUS
Genetic Status:
CANDOLIER FOREVER 376 USA7501542
J R JUICE Z005 USAZ005
MG'S BLACK DIAMOND CAN5504
Dam: DSK JC DANDALOO C41(AI) NKSC41
HOFF ULTRA S C 108 USASC108
DSK HU DANDLOO Z81(AI) NKSZ81
DSK HR DANDALOO X69(AI) NKX69

HBR
Animal ID: NKSJ85
AMFU, NHFU, CAFU, DDFU

This bull's pedigree is backed by 2 of our original female lines in Panda and Dandaloo. Both families originated from the Te Mania stud. Suitable for heifers. All paternal and maternal sires and grand sires being used on heifers.

CALVING EASE		July 2015 Angus Australia BREEDPLAN															
	CED	DTRS	GL	BW	200	400	600	MCWT	MILK	SS	DTC	CWT	EMA	RIB	RUMP	RBY%	IMF%
EBV	-0.5	-2.1	0	5	37	70	90	94	14	1.5	-1.1	50	0.3	-1.6	-0.8	-0.2	1.2
Acc	40%	33%	58%	70%	63%	62%	68%	60%	45%	64%	36%	53%	50%	51%	53%	47%	44%

Purchaser:

Traits Observed: CE,BWT,200WT,600WT(x2),SS,FAT,EMA,IMF

Price:

Lot 60
DSK G6 JERALD J102
Born: 05/12/2013
AVONLEE YORKER Y19 BKTY19
COBBADAH CREEK Y19 P.FRED D149 BIQD149
BOOROOMOOKA REFRESH R129(AI) NGMR129
Sire: DSK CCD GERALD G6 NKSG6
PALES NE MAGISTRATE M12(AI)(ET) NJUM12
DSK PM PANDA R3 NKSR3
DSK WB PANDA M7(AI)(ET) NKSM7

ANGUS
Genetic Status:
PACK POWER SCOTCH CAP 889(ET) USA889
MERRIDALE PACK-N-POWER A46(AI)(ET) CMDA46
MERRIDALE MILDRED S16(AI)(ET) CMD516
Dam: DSK PNP DANDALOO D159 NKSD159
PREMIER INDEPENDENCE K N USA1871
ALEX PI DANDALOO W4(AI)(ET) DIJW4
DSK WB DANDLOO P22 NKSP22

HBR
Animal ID: NKSJ102
AMFU, NHFU, CAFU, DDFU

J102 will suit the feeder steer trade with extra fram and later maturity pattern. Will develop into a big bull who should also be suitable for self replacing herds.

CALVING EASE		July 2015 Angus Australia BREEDPLAN															
	CED	DTRS	GL	BW	200	400	600	MCWT	MILK	SS	DTC	CWT	EMA	RIB	RUMP	RBY%	IMF%
EBV	-0.4	-0.7	-	-	36	72	86	83	11	0.5	-	54	2.2	-2.7	-1.5	0.3	0.7
Acc	35%	27%	-	-	61%	61%	64%	56%	40%	64%	-	50%	48%	48%	50%	44%	40%

Purchaser:

Traits Observed: CE,200WT,400WT,600WT,SS,FAT,EMA,IMF

Price:

Lot 61
DSK G6 JEWFIISH J72
Born: 13/11/2013
AVONLEE YORKER Y19 BKTY19
COBBADAH CREEK Y19 P.FRED D149 BIQD149
BOOROOMOOKA REFRESH R129(AI) NGMR129
Sire: DSK CCD GERALD G6 NKSG6
PALES NE MAGISTRATE M12(AI)(ET) NJUM12
DSK PM PANDA R3 NKSR3
DSK WB PANDA M7(AI)(ET) NKSM7

ANGUS
Genetic Status:
BROST POWER DRIVE USA251
G V POWER DRIVE 7369 USA7369
GREEN VALLEY ECTESSA 82 85 USA727688
Dam: DSK UJ FLOWER B16(AI) NKSB16
EDI ANGUS RITO V6(AI) CMFV6
DSK V6 FLOWER Y30 NKSY30
PALES HR FLOWER V21(AI)(ET) NJUV21

HBR
Animal ID: NKSJ72
AMFU, NHFU, CAFU, DDFU

J72 has a good skin and hair type and the shape to suit heifers with a small head, light bone and smooth shoulders.

CALVING EASE		July 2015 Angus Australia BREEDPLAN															
	CED	DTRS	GL	BW	200	400	600	MCWT	MILK	SS	DTC	CWT	EMA	RIB	RUMP	RBY%	IMF%
EBV	-0.3	0.3	-2.2	4.4	34	61	74	75	12	0.3	-	45	1.2	-1	-0.3	0	0.5
Acc	37%	29%	50%	70%	63%	64%	68%	60%	42%	66%	-	53%	51%	52%	54%	47%	43%

Purchaser:

Traits Observed: CE,BWT,200WT,400WT,600WT,SS,FAT,EMA,IMF

Price:

Lot 62
DSK LG JUSTIFY J77
Born: 22/11/2013
G A R SOLUTION(ET) USA1422615
LAWSONS INVINCIBLE C402(AI) VLYC402
LAWSONS PREDESTINED A598(AI) VLYA598
Sire: LAWSONS INVINCIBLE G10(AI) VLYG10
LAWSONS DINKY-DI Z191(AI)(ET) VLYZ191
LAWSONS DINKY DI D971(AI) VLYD971
LAWSONS BUSHWACKER Z428(AI)(ET) VLYZ428

ANGUS
Genetic Status:
PACK POWER SCOTCH CAP 889(ET) USA889
MERRIDALE PACK-N-POWER A46(AI)(ET) CMDA46
MERRIDALE MILDRED S16(AI)(ET) CMD516
Dam: DSK PNP PANDA D61 NKSD61
HOFF LIMITED EDITION S C 594 USA13119152
DSK HLE PANDA A106(AI)(ET) NKSA106
DSK WB PANDA M7(AI)(ET) NKSM7

HBR
Animal ID: NKSJ77
AM7%, NHFU, CAFU, DD7%

Safe heifer bull here with the body type to suit all markets.

CALVING EASE		July 2015 Angus Australia BREEDPLAN															
	CED	DTRS	GL	BW	200	400	600	MCWT	MILK	SS	DTC	CWT	EMA	RIB	RUMP	RBY%	IMF%
EBV	0.8	-1.2	-	5	42	78	105	96	13	1.3	-1.2	60	4.6	-2.1	-2.1	0.8	1.8
Acc	40%	34%	-	60%	62%	64%	67%	59%	43%	68%	35%	53%	53%	53%	55%	49%	46%

Purchaser:

Traits Observed: CE,200WT,400WT,600WT,SS,FAT,EMA,IMF

Price:

Lot 63	DSK PGM JAMIE J23E (AI) (ET)	CHAROLAIS	Animal ID: DSKJ23E
Born: 16/09/2013	Group; 1	White Dehorned	Registered
LT RIO BLANCO 1234 P (P) OAUW591E (P) SVY PIONEER 402P PED-8416E SVY JINGLES 153L PED-3049E Sire: SVY PILGRIM PLD 655S (P) OACB3031E (P) RGP EUREKA 17E PMC179283 (P) OACQ17E (P) HFCC FRENCHKISS 919J PED-9584E QCR FRENCHKISS 33F PED-8979E			
FLEETS RASCAL IAEF6170F PALGROVE NAPOLEON (AI) (ET) PKN114F (H) SUNDOWNER RANCHES N076F (AI) (ET) SRN76F Dam: PALGROVE BRONWIN 71 (AI) (TW) PKY149E (H) GUNNADOO RED BARON R/F GN1Q31D (D) PALGROVE BRONWIN 55 PKV286E (H) PALGROVE BRONWIN 40 PKQ104E (H)			

One of 3 embryo brothers in the catalogue and very similar bulls. Strong, well muscled bull that will add value to his progeny. Full ET brothers are lots 18 and 31.

CALVING EASE June 2015 Australasian Charolais GROUP BREEDPLAN																	
	CED	DTRS	GL	BW	200	400	600	MCWT	MILK	SS	DTC	CWT	EMA	RIB	RUMP	RBY%	IMF%
EBV	2.5	0.7	-3.2	0.1	16	31	44	45	5	1.4	-	-	1.9	0.8	1.1	-0.4	0.3
Acc	47%	42%	59%	72%	66%	64%	68%	60%	53%	70%	-	-	47%	52%	51%	49%	45%

Traits Observed: BWT,200WT,600WT(x2),SS,FAT,EMA,IMF

Purchaser:

Price:

Lot 64	DSK PGM JONO J11E (AI) (P)	CHAROLAIS	Animal ID: DSKJ11E
Born: 30/08/2013	Group; 1	White Polled	Registered
LT RIO BLANCO 1234 P (P) OAUW591E (P) SVY PIONEER 402P PED-8416E SVY JINGLES 153L PED-3049E Sire: SVY PILGRIM PLD 655S (P) OACB3031E (P) RGP EUREKA 17E PMC179283 (P) OACQ17E (P) HFCC FRENCHKISS 919J PED-9584E QCR FRENCHKISS 33F PED-8979E			
TREPIDENT OAFX8582F INDIANA OAFN393F TRISTESSE PED-5882F Dam: DSK INDI FLOSSY G21E (AI) (ET) (R/F) DSKG21E (D) PINNAROO RED RULER (AI) (ET) BAAP89F (H) PINNAROO RED FAIRY FLOSS R/F BAAS74E (D) PINNAROO NOBLE LADY (AI) BAAN102E			

Powerful carcass through this bull who will add carcass and weight to his calves. Top female line with Indiana and S74E.

CALVING EASE June 2015 Australasian Charolais GROUP BREEDPLAN																	
	CED	DTRS	GL	BW	200	400	600	MCWT	MILK	SS	DTC	CWT	EMA	RIB	RUMP	RBY%	IMF%
EBV	-2.7	-8.5	-2.8	-0.1	14	27	27	32	9	1	-	-	1.8	-0.1	-0.2	0.4	0.1
Acc	46%	41%	74%	71%	65%	64%	70%	60%	49%	73%	-	-	48%	53%	52%	50%	47%

Traits Observed: GL,BWT,200WT,600WT(x2),SS,FAT,EMA,IMF

Purchaser:

Price:

Lot 65	DSK BD JOSEPH J37E (P)	CHAROLAIS	Animal ID: DSKJ37E
Born: 07/10/2013	Group; 1	White Polled	Registered
SCHURRTOP 5627 PED-5627E (H) LT WYOMING WIND 4020 PLD (P) OAUP4020E (P) LT CHAP'S LADY 217 OP PED-2170E (H) Sire: BAROOLA D989E (AI) (ET) (P) NCFD989E (P) PALGROVE METRIC PKM62E (H) BAROOLA KARLA 2 NCFR2E (D) BAROOLA KARLA NCFK1F (D)			
LT WESTERN SPUR 2061 PLD M645785 (P) OAUZ2061E (P) LT WESTERN EDGE 4057 PLD M686616 (P) OAUZ6616E (P) LT DUCHESS OF MAC 7076 P PED-2993E (H) Dam: DSK EDGE BEATRIX F28E (AI) (P) DSKF28E (P) GUNNADOO XCEPTION X23E GN1X23E DSK GX BEATRIX A1E (P) DSKA1E (P) DSK BEATRIX V1 (P) DSKV1E (P)			

A clean polled bull with plenty of stretch and capacity. Maternal side goes back to V1 who was one of our top females.

CALVING EASE June 2015 Australasian Charolais GROUP BREEDPLAN																	
	CED	DTRS	GL	BW	200	400	600	MCWT	MILK	SS	DTC	CWT	EMA	RIB	RUMP	RBY%	IMF%
EBV	3.4	1	-4.3	-0.4	7	22	21	-	9	2.6	-	-	-0.8	0.4	0.8	-0.8	0.1
Acc	40%	36%	51%	69%	61%	63%	66%	-	43%	70%	-	-	47%	48%	47%	48%	45%

Traits Observed: CE,BWT,200WT,400WT,600WT,SS,FAT,EMA,IMF

Purchaser:

Price:

Lot 66	DSK AUSSIE J21E (AI) (P)	CHAROLAIS	Animal ID: DSKJ21E
Born: 19/09/2013	Group; 1	White Polled	Registered
SCHURRTOP 5627 PED-5627E (H) LT WYOMING WIND 4020 PLD (P) OAUP4020E (P) LT CHAP'S LADY 217 OP PED-2170E (H) Sire: DSK WW AUSSIE GOLD A11E (AI) (ET) (P) (R/F) DSKA11E (P) PINNAROO RED RULER (AI) (ET) BAAP89F (H) PINNAROO RED TRENDIE R/F BAAS81E (D) PINNAROO MISS MELBA (AI) BAAM16D (H)			
LT WESTERN EDGE 4057 PLD M686616 (P) OAUZ6616E (P) DSK EDGE IT TO SLIPS E18 (AI) (ET) (P) DSKE18E (P) DSK GN JULIETTE U1E (AI) (P) DSKU1E (P) Dam: DSK E18 BEATRIX G32E (P) DSKG32E (P) DSK WW AUSSIE GOLD A11E (AI) (ET) (P) (R/F) DSKA11E (P) DSK A11 BEATRIX E28E (P) DSKE28E (P) DSK GX BEATRIX A340E (P) (TW) DSKA340E (P)			

This bull is suited to mature British breed females. Will add length and stretch to his progeny.

CALVING EASE June 2015 Australasian Charolais GROUP BREEDPLAN																	
	CED	DTRS	GL	BW	200	400	600	MCWT	MILK	SS	DTC	CWT	EMA	RIB	RUMP	RBY%	IMF%
EBV	5.9	5.7	-0.4	-0.8	11	19	24	-	13	0.9	-	-	0.4	0.9	1.3	-0.8	0.3
Acc	41%	36%	64%	71%	60%	55%	57%	-	44%	47%	-	-	35%	37%	36%	36%	34%

Traits Observed: GL,CE,BWT,200WT,600WT(x2),SS,FAT,EMA,IMF

Purchaser:

Price:

Lot 68

DSK EXP JO-LO J61E

Born: 28/10/2013

Group; 1

CHAROLAIS

White

Dehorned

Animal ID: DSKJ61E

Registered

LANG'S ERIC THE RED 3E (P/S) PED-8117E (S)

HARVIE JAGER 65J PMC228759 (P) OACU8759E (P)

HARVIE MISS FRANCIS 47F FC234929 OACR4929E (D)

Sire: DSK HJ EXPRESS E75E (AI) (ET) (P) DSKE75E (P)

BCJ PETER PATRIATION 5P IACB6077E (H)

PALGROVE ESTELLA 31 (AI) (ET) PKN230E (H)

PALGROVE ESTELLA 7 PKE101D (H)

FERNVALE MAGNUM (AI) FENM1E (D)

GUNNADOO QUARTER MASTER Q95E R/F (AI) GN1Q95E (D)

GUNNADOO DR STONE L13D (AI) GN1L13D (H)

Dam: DSK GQM BEATRIX E74E (AI) DSKE74E (D)

AYR HUELVA'S HUSTLER (AI) AYRT100E

DSK T100E BEATRIX W3E DSKW3E

DSK BV BEATRIX U7E (AI) (ET) (P) DSKU7E (P)

Good mid maturity pattern bull showing a strong top line which we expect from Express progeny. Dam is a Quartermaster daughter who produced top females with depth and softness with easy finishing.

CALVING EASE			June 2015 Australasian Charolais GROUP BREEDPLAN														
	CED	DTRS	GL	BW	200	400	600	MCWT	MILK	SS	DTC	CWT	EMA	RIB	RUMP	RBY%	IMF%
EBV	3.3	1.8	-0.7	-0.1	8	17	19	-	3	1.3	-	-	1.2	0.1	0.4	-0.1	0.6
Acc	40%	34%	52%	71%	61%	61%	67%	-	44%	50%	-	-	37%	43%	42%	40%	36%

Traits Observed: CE,BWT,200WT,600WT(x2),SS,FAT,EMA,IMF

Purchaser:

Price:

Lot 69

DSK BD JULY J65E (P)

Born: 18/12/2013

Group; 1

CHAROLAIS

White

Polled

Animal ID: DSKJ65E

Registered

SCHURRTOP 5627 PED-5627E (H)

LT WYOMING WIND 4020 PLD (P) OAUP4020E (P)

LT CHAP'S LADY 217 OP PED-2170E (H)

Sire: BAROOLA D989E (AI) (ET) (P) NCFD989E (P)

PALGROVE METRIC PKM62E (H)

BAROOLA KARLA 2 NCFR2E (D)

BAROOLA KARLA NCFK1F (D)

LT WYOMING WIND 4020 PLD (P) OAUP4020E (P)

DSK WW AUSSIE GOLD A11E (AI) (ET) (P) (R/F) DSKA11E (P)

PINNAROO RED TRENDIE R/F BAAS81E (D)

Dam: DSK A11 RANCHES F50E (P) DSKF50E (P)

MOONGOOL YOKEL DP2Y218E (H)

DSK MY RANCHES B21E (P) DSKB21E (P)

DSK MP RANCHES U4E (AI) (P) DSKU4E (P)

Young december born bull here from an impressive female line going back to our original Mandalong cow.

CALVING EASE			June 2015 Australasian Charolais GROUP BREEDPLAN														
	CED	DTRS	GL	BW	200	400	600	MCWT	MILK	SS	DTC	CWT	EMA	RIB	RUMP	RBY%	IMF%
EBV	4.4	-3	-	-0.1	12	19	21	-	8	2	-	0.8	0.8	0.9	1.3	-0.4	0.3
Acc	38%	35%	-	53%	48%	46%	48%	-	39%	44%	-	35%	35%	37%	37%	36%	34%

Traits Observed: CE,200WT,400WT,600WT,SS,FAT,EMA,IMF

Purchaser:

Price:

Notes:

Notes:

DSK genetics a proven source of quality, top yielding domestic trade beef.

At DSK one of our main business arms is grain feeding young cattle suitable for the early entry Coles market or the MSA grade acceptable young cattle killed either at Primo or Bindaree.

We have found our best results have come from home bred or client bred cattle with mainly Charolais influence from our DSK Charolais sires. Now that we no longer have the commercial numbers to keep up our feeder cattle numbers, where possible we have tried to buy calves suitable to feed from bull clients that can identify to a majority of DSK genetics. We have always said that we breed bulls that are proven well to us that means that the calves you breed that are by our bulls are what feeders want to make efficient, high yielding quality carcasses quickly at a young age. We would love to know when you have these animals available or coming up at auctions so if possible we can try and secure good cattle for our grain fed business.

We are always looking to secure good feeder calves by DSK bulls.

REMITALL H RACHIS 21R

Angus Reference Sire

HBR Animal ID: CAN1274555
Genetic Status: AMF, NHF, CAFU, DDFU

CONNEALY DATELINE USA12015519
VERMILION DATELINE 7078 USA7078
VERMILION BLACKBIRD 5044 USA5044
Sire: REMITALL NIGHTHAWK 37N CAN1171920
LEACHMAN RIGHT TIME USA2700
DIAMOND D EVERA 073G CAN944010
EVERA OF G G 73X CAN660954
NICHOLS EUREKA W57 USA11000663
O G L BATTLE CRY 427 128 USA12215320
O G L DUSTY ROSE 128 902 USA11630589
Dam: HENDERSON MISSIE 32'02 CAN1122972
HFI AUGUSTAS CAN752070
HENDERSON MISIE 2'97 CAN890141
HENDERSON MISSIE 24'87 CAN642959



Best bull we have used in the DSK herd to date for consistency of pattern, muscle, easy finishing, great temperament, good producing daughters and overall meat to bone ration in his Angus progeny. DSK has sole use of this bull as we purchased the Australian semen rights and have only released 30 doses of semen for outside herd use back in 2012. Sons have sold to \$20,000 and daughters to \$16,000. Produced Royal Show Grand Champions in his first year of breeding at DSK.

CALVING EASE		July 2015 Angus Australia BREEDPLAN															
	CED	DTRS	GL	BW	200	400	600	MCWT	MILK	SS	DTC	CWT	EMA	RIB	RUMP	RBY%	IMF%
EBV	-2.7	-1.1	-1.4	6.6	53	98	114	109	16	1.3	-5.1	69	0.5	-0.7	0	0.3	0.7
Acc	60%	41%	87%	91%	86%	85%	85%	75%	78%	81%	37%	71%	70%	71%	68%	63%	62%

Statistics: Number of Herds: 9, Number of Dtrs: 14, Prog Analysed: 124, Scan Prog: 83

TC TOTAL 410

Angus Reference Sire

HBR Animal ID: USA14844711
Genetic Status: AMF, NHF, CAF, MAF, DDF

V D A R NEW TREND 315 USA315
B/R NEW DESIGN 036 USA036
B/R BLACKCAP EMPRESS 76 USA76
Sire: BON VIEW NEW DESIGN 208 USA208
N BAR EMULATION EXT USAU23
BON VIEW ERICA 443 USA443
BON VIEW ERICA 1380 USA1380
G A R PRECISION 1680 USA1680
TWIN VALLEY PRECISION E161 USA12346200
W C C BLACKCAP C9 USA11911768
Dam: TC ERICA EILEEN 2047 USA14270867
LEACHMAN RIGHT TIME USA2700
TC ERICA EILEEN 5116 USA12378867
T C ERICA EILEEN 6006 USA788213



Used for his growth and EBV's for comparison to our other AI and walking sires.

CALVING EASE		July 2015 Angus Australia BREEDPLAN															
	CED	DTRS	GL	BW	200	400	600	MCWT	MILK	SS	DTC	CWT	EMA	RIB	RUMP	RBY%	IMF%
EBV	-9	-1.1	-4.3	5	60	99	131	156	14	1.8	-4.3	67	7.8	-3.2	-1.5	1.5	2.4
Acc	93%	84%	99%	99%	98%	98%	98%	97%	97%	98%	72%	93%	93%	93%	93%	90%	92%

Statistics: Number of Herds: 61, Number of Dtrs: 243, Prog Analysed: 1103, Scan Prog: 742, Docility Prog: 125

LAWSONS INVINCIBLE G10(AI)

Angus Reference Sire

HBR Animal ID: VLYG10
Genetic Status: AM14%, NHF, CAFU, DD14%

S S TRAVELER 6807 T510 USA510
G A R SOLUTION(ET) USA1422615
G A R NEW DESIGN 50 USA13728470
Sire: LAWSONS INVINCIBLE C402(AI) VLYC402
G A R PREDESTINED USA13395344
LAWSONS PREDESTINED A598(AI) VLYA598
LAWSONS FUTURE DIRECTION X1114(AI) VLYX1114

BON VIEW NEW DESIGN 1407 USA1407
LAWSONS DINKY-DI Z191(AI)(ET) VLYZ191
G A R PRECISION 1900(ET) USA1900
Dam: LAWSONS DINKY DI D971(AI) VLYD971
B C C BUSHWACKER 41-93 USA41-93
LAWSONS BUSHWACKER Z428(AI)(ET) VLYZ428
YTHANBRAE NEW DESIGN 036 V1037(AI)(ET) VLYV1037

Calving ease specialist bull used on heifers with no calving assistance.

CALVING EASE		July 2015 Angus Australia BREEDPLAN															
	CED	DTRS	GL	BW	200	400	600	MCWT	MILK	SS	DTC	CWT	EMA	RIB	RUMP	RBY%	IMF%
EBV	2.4	-0.4	-3.9	4	47	84	115	97	15	0.8	-3.3	64	7.1	-1.2	-1.9	0.6	2.9
Acc	62%	53%	67%	81%	75%	75%	76%	71%	60%	78%	47%	67%	67%	66%	68%	63%	61%

Statistics: Number of Herds: 1, Prog Analysed: 11, Scan Prog: 7

KANSAS UPWARD G198(AI)

Angus Reference Sire

HBR **Animal ID:** **NKLG198**
Genetic Status: **AMF, NHF, CAF, RDF, DDF**

CONNEALY LEAD ON USA13447282

CONNEALY ONWARD USA14216491

ALTUNE OF CONANGA 6104 USA13169198

Sire: SITZ UPWARD 307R USA14963730

SITZ VALUE 7097 USA7097

SITZ HENRIETTA PRIDE 81M USA14087650

SITZ HENRIETTA PRIDE 1370 USA13576315

B/R NEW DESIGN 036 USA036

BON VIEW NEW DESIGN 1407 USA1407

BON VIEW PRIDE 664 USA12139985

Dam: KANSAS ANNIE Y656(AI)(ET) NKLY656

G T EXPO USA11160688

AMAROO EXPO ANNIE U024(AI)(ET) BYEU024

SUMMITCREST ANNIE C022 USAC022



Purchased as a calf at foot of Y656 who we bought in to use as a donor female. Great muscling on a moderate frame. Used predominantly to join our heifers, we have had no calving troubles from this bull in the 2 calf drops that he has had so far. Good temperament, skin and hair type.

CALVING EASE		July 2014 Angus Australia BREEDPLAN															
	CED	DTRS	GL	BW	200	400	600	MCWT	MILK	SS	DTC	CWT	EMA	RIB	RUMP	RBY%	IMF%
EBV	2	-0.6	-3.5	4.1	50	89	121	90	22	1.7	-4.3	69	8	-1	-2.2	1.8	1.3
Acc	62%	50%	60%	82%	76%	74%	76%	72%	61%	71%	42%	65%	62%	63%	64%	60%	59%

Statistics: Number of Herds: 1, Prog Analysed: 22, Scan Prog: 9

DSK CCD GERALD G6

Angus Reference Sire

HBR **Animal ID:** **NKSG6**
Genetic Status: **AMF, NHF, CAF, RDC, DDF**

PALES SH VETO V10(AI)(ET) NJUV10

AVONLEE YORKER Y19 BKTY19

AVONLEE KIWI V13(AI)(ET) BKTIV13

Sire: COBBADAH CREEK Y19 P.FRED D149 BIQD149

V D A R NEW TREND 315 USA315

BOOROOMOOKA REFRESH R129(AI) NGMR129

BOOROOMOOKA PAULA P10(AI) NGMP10

ONEILLS NORTHERN ERROLL (IMP USA) USA225

PALES NE MAGISTRATE M12(AI)(ET) NJUM12

NORANDA MONA J35+89 SNOJ35+89

Dam: DSK PM PANDA R3 NKSR3

BLACK VELVET WILLYBOY J31+89(AI) WZJJ31+89

DSK WB PANDA M7(AI)(ET) NKSM7

TE MANIA PANDA E12. VTME12+85



The last calf from our top R3 donor dam who was Interbreed Champion at Sydney in 1998, the first time the Angus breed had managed that prestigious title. She has bred many champions and great progeny since and breeding on until she was 18 years of age. R3 is also the dam of our current best donor, W9.

CALVING EASE		July 2015 Angus Australia BREEDPLAN															
	CED	DTRS	GL	BW	200	400	600	MCWT	MILK	SS	DTC	CWT	EMA	RIB	RUMP	RBY%	IMF%
EBV	-1.7	-0.9	-2.3	5.5	36	71	85	84	12	1	-0.1	52	1.6	-2.5	-1.7	0.6	0.6
Acc	50%	36%	50%	77%	70%	70%	70%	65%	52%	62%	36%	59%	58%	57%	59%	53%	49%

Statistics: Number of Herds: 1, Prog Analysed: 8, Scan Prog: 2

DSK GEORGE G2(AI)

Angus Reference Sire

HBR **Animal ID:** **NKSG2**
Genetic Status: **AMF, NHF, CAF, RDF, DDF**

SCOTCH CAP USA14

PACK POWER SCOTCH CAP 889(ET) USA889

SIR WMS ELBA 374 USA374

Sire: MERRIDALE PACK-N-POWER A46(AI)(ET) CMDA46

BON VIEW EMULATION EXT 473 USA473

MERRIDALE MILDRED S16(AI)(ET) CMDS16

MERRIGRANGE MILDRED J2+89(AI)(ET) VMGJ2+89

O S U 6T6 ULTRA USA11870571

HOFF ULTRA S C 108 USASC108

HOFF MISS NORTHLANDER SC 908 USASC908

Dam: DSK HU PANDA W9(AI)(ET) NKSW9

PALES NE MAGISTRATE M12(AI)(ET) NJUM12

DSK PM PANDA R3 NKSR3

DSK WB PANDA M7(AI)(ET) NKSM7

A sire with a lot of length, good skin and hair with good phenotype. Dam is our top producing donor dam, W9 who has had sons sell to \$10,000 and a daughters to \$15,000.

CALVING EASE		July 2015 Angus Australia BREEDPLAN															
	CED	DTRS	GL	BW	200	400	600	MCWT	MILK	SS	DTC	CWT	EMA	RIB	RUMP	RBY%	IMF%
EBV	-0.3	-0.9	-0.7	5.7	38	78	99	101	12	1.4	-0.4	56	2.2	-2.5	-1.9	0.7	1
Acc	55%	41%	76%	76%	71%	69%	71%	65%	57%	66%	42%	59%	56%	57%	57%	53%	51%

Statistics: Number of Herds: 1, Prog Analysed: 17, Scan Prog: 5

SVY PILGRIM PLD 655S (P)
Charolais Reference SirePolled
WhiteAnimal ID: OACB3031E
Registered Australian Purebred

WCR PRIME CUT 764 PLD PMC223447 (P) OACS764E (P)

LT RIO BLANCO 1234 P (P) OAUW591E (P)

LT PRAIRIE MAID 4054 PED-4694E (H)

Sire: SVY PIONEER 402P PED-8416E

SKYMONT EASE 2078 PED-5420E (H)

SVY JINGLES 153L PED-3049E

WINDYVIEW JIGGLES 2J PED-9651E

E-CEE KATMANDU 200B PED-502E (H)

RGP EUREKA 17E PMC179283 (P) OACQ17E (P)

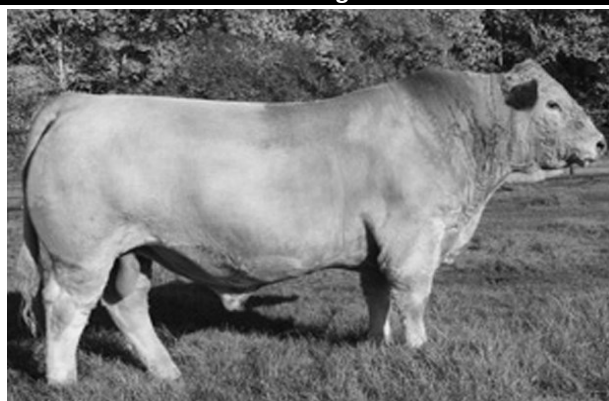
AGV MASTERLADY 17Y PED-788E (H)

Dam: HFCC FRENCHKISS 919J PED-9584E

SIR QCR HIGHGEAR 2P OAC-74E

QCR FRENCHKISS 33F PED-8979E

QCR DIMPLES 39D PED-939E



We feel this bull will have a big impact on the Charolais breed in Australia. Producing progeny with big capacity and volume, lots of muscle and easy doing ability. We have daughters in production who milk well and are breeding well.

CALVING EASE				June 2015 Australasian Charolais GROUP BREEDPLAN													
	CED	DTRS	GL	BW	200	400	600	MCWT	MILK	SS	DTC	CWT	EMA	RIB	RUMP	RBV%	IMF%
EBV	-7	-20.3	-4.7	1.2	19	41	54	44	4	2.8	31	2.4	1.9	2.6	-0.7	0.3	0.3
Acc	75%	67%	96%	95%	93%	91%	92%	80%	76%	91%	77%	64%	78%	77%	67%	64%	53%

Statistics: Number of Herds: 47, Progeny Analysed: 332, Scan Progeny: 122, Number of Dtrs: 20

AGA KHAN 58693 A38
Charolais Reference SireHorned
WhiteAnimal ID: IAF6019F
Full French

KENTUCKY ZZFX1441F

Sire: ORGANDI 16867 ZZFX2116F

EMMA ZZFX886F

NARCISSE ZZFX1070F

Dam: PERLE ZZFX757F

MARQUISE ZZFX469F

This sire was used as a foundation sire for many Charolais breeders starting up in the early years of the breed in Australia. He was known for the strength of breeding in his daughters and we sourced a few straws of semen to flush with in the hopes of making some great cows. We have a few heifers that are ET siblings to the bulls offered in this catalogue and they look great.

CALVING EASE				June 2014 Australasian Charolais GROUP BREEDPLAN													
	CED	DTRS	GL	BW	200	400	600	MCWT	MILK	SS	DTC	CWT	EMA	RIB	RUMP	RBV%	IMF%
EBV	-0.2	-12.3	2.7	0.8	2	-5	-14	8	-1	1.1		2.3	-0.7	-0.9	1.3	-0.5	-0.1
Acc	92%	93%	94%	96%	96%	95%	95%	94%	97%	90%		77%	77%	77%	77%	71%	55%

Statistics: Number of Herds: 40, Progeny Analysed: 212, Scan Progeny: 11, Number of Dtrs: 103

MOONGOOL ENCORE (P)
Charolais Reference SirePolled/Scurred
WhiteAnimal ID: DP2E438E
Registered Australian Purebred

COBRABALD PICASSO (AI) (P) ASHP82E (P)

MINNIE VALE SUNDANCE SGSS31E (H)

MINNIE VALE PEANUT SGSP25E (D)

Sire: MOONGOOL WINCHESTER DP2W300E (H)

PALGROVE GENERATOR (AI) (P) PKG80D (P)

MOONGOOL LINDA DP2P25E (H)

GUNNADOO LINDA L58E (AI) GN1L58E (H)

KARAWI LYNDONCH (P) KANL8E (P)

STANTON CASTLEWOOD JMDP12E

STANTON G1E (P) JMDG1E (P)

Dam: TEMANA GLORIA V14 TJV14E

CORHAN PEWTER (AI) (ET) (P) MJCR35E (P)

ALLEDNAW GLORIA AKG4D

ADD-ZAR O4C GDO4C



This is the 2nd draft of sale bulls by Encore with a son topping last year's Charolais sale draft. Progeny are full of muscle and are easy finishing. Daughters has good udders with small teats. Our Reserve Champion Middleweight steer at Sydney Royal steer show this year was sired by Encore.

CALVING EASE			June 2015 Australasian Charolais GROUP BREEDPLAN														
	CED	DTRS	GL	BW	200	400	600	MCWT	MILK	SS	DTC	CWT	EMA	RIB	RUMP	RBV%	IMF%
EBV	-0.9	-7.4	-1.4	0.5	9	26	36	38	8	2.1		25	2.6	0.2	0.3	0.6	-0.2
Acc	56%	42%	54%	83%	73%	73%	78%	69%	53%	78%		64%	52%	54%	53%	54%	50%

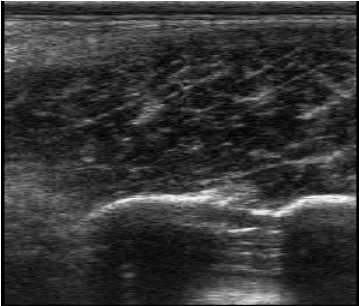
Statistics: Number of Herds: 1, Progeny Analysed: 24, Scan Progeny: 8,

INTRAMUSCULAR FAT. By Roger Evans, Bovine Scanning Services

Intramuscular Fat (IMF) is the fat that is deposited within the muscle tissues of the animal. It is of interest to the beef producer because upon chilling of the beef carcass the IMF solidifies to give us marbling. The amount of marbling expressed in the carcass will have a great bearing on the economic value of the carcass and resulting profit to the producer. The use of real-time ultrasound in measuring IMF can give the beef producer an accurate indicator of the animal's ability to deposit IMF and therefore its ability to marble.

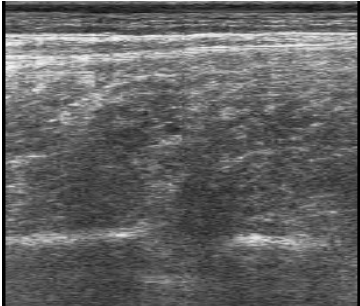
IMF is measured as a percentage of fat that is within the eye muscle. If an animal has an IMF% of 4.9% then 4.9% of the eye muscle area is IMF. The higher the IMF% then the greater the marbling potential of that animal. Not only is the magnitude of the IMF% important, so too is the distribution of IMF within the muscle. IMF that is evenly distributed within the muscle will solidify into the fine flecked or honeycomb marbling that is most desired by the consumer. This fine flecking gives a greater consistency of texture, juiciness and flavour from one mouthful to the next. With this in mind the DSK sale bulls have been assessed for their IMF% and IMF distribution. To assess the IMF Distribution a scale from 1 to 5+ has been developed. The higher the distribution grade reflects a finer and more even distribution of IMF. Animals with a higher distribution grade combined with a high IMF% are desired for the production of high quality beef.

IMF DISTRIBUTION									
1	1+	2	2+	3	3+	4	4+	5	5+
Very coarse									Very fine



The picture on the left shows the heavy blotchy look of a 2+ score for distribution while the picture on the right shows the fine even textured distribution of a 5+ rated animal.

A note from Chris Knox. Roger Evans has been scoring IMF% distribution for more than 16 yrs and we have proven it to be highly heritable.



Profit = Maximum Return - Minimum Input

Profit comes from not having the most muscle or the most marbling, but from having just the right amount of muscle on a long, wide, high yielding frame that fattens easily without getting over-fat & shows a moderate amount of marbling content. Profit makes the world go round.



100% Charolais or 100% Angus or any % of cross between Charolais and Angus. DSK bred steers are consistent, profitable & are winners at all major shows & feedlot trials across NSW & QLD. Our DSK bred champion steers are not bred for shows but are just part of our DSK commercial operation finishing yearling steers & heifers to 300kg carcass weight at under 16 months. Most average a 54% full weight dressing % or 60% curfew dressing % and all on an ave. 95 day grain feed. Our finished steers & heifers are bred by the same sires and cow families as our sale bulls. No matter what market place they go, DSK cattle are always topping markets & hitting grids.

DSK bulls really are *proven & profitable performers*.

DSK Homebred Steers - Bred the SAME as DSK Bulls



DSK purebred Angus strs
Ave 328kg c/w = \$1632



DSK purebred Charolais strs
Ave 339kg c/w = \$1659

All Milk Tooth - 96 day feed - All graded MSA

36 DSK Angus, Charolais & Char X Ang steers to JBS Swift, Scone on 17th June



The Best of Both Worlds

DSK Purebred Charolais str
785kg l/w @ \$2.48 = \$1948
Gunnedah Saleyards 16th June
Milk Teeth, 96 day feed



22nd Annual Bull Sale,
1^{pm} 13th August 2015
Gunnedah Saleyards

DSK Angus and Charolais: Chris Knox and Helen Alexander
Borah Station, Rocky Glen, Coonabarabran NSW 2357
Ph: (02) 6842 9101 - 0427 600 278
E: dskangusandcharolais@westnet.com.au