

# DSK

## ANGUS & CHAROLAIS

### 23<sup>RD</sup> ANNUAL BULL SALE

**44** Angus bulls

**26** Charolais bulls



## Gunnedah Saleyards

### 1<sup>pm</sup> Thu 11<sup>th</sup> Aug 2016

# DSK Angus & Charolais

Cows - Bulls - Steers - Carcasses - Taste Test

## Complete Beef Production *Success*



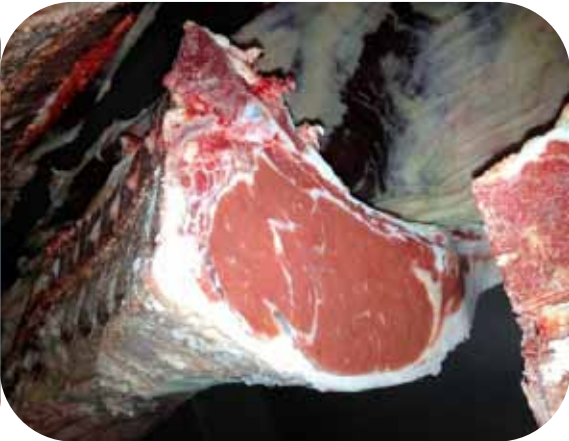
Sire: Kansas G198

DSK KG J106 - 100% Angus,  
Milk Tooth 572kg l/w,  
57% dressing % 15 / 7 fats,  
110sq/cm rib eye.  
100 days on feed.

Reserve Champion Heavyweight  
Carcase Sydney Royal 2015 & Gold  
Medal 93 point carcase score just

0.5 point behind the Grand Champion carcase at 93.5 points

Sired by DSK herd sire NKL G198.



Sire: Gunnadoo Xception

DSK GX 51G - 100% Charolais, Milk Tooth, 594kg, 60.6% dressing %, 110 days on feed, 12/7  
fats, 115sq/cm rib eye. Grand Champion Carcase Gold Medal Winner Sydney Royal Show 2013



2016 Middleweight placing Steer  
Sydney Royal Show DSKL59

2015 Middleweight Reserve Champion  
Steer Sydney Royal Show DSK K24E

2014 Middleweight Champion Steer  
Sydney Royal Show DSK H111E



Sire: LLB Freewheeler



Sire: Moongool Encore



Sire: DSK Express E75E



# DSK

Angus & Charolais Studs

## 23rd Annual Bull Sale

70 Performance Recorded Bulls

**Selling Agents Landmark Gunnedah Ph: (02) 6742 3899 or Scott Cooper: 0427 674 411**

Email: [scott.cooper@landmark.com.au](mailto:scott.cooper@landmark.com.au)

Email: [peter.godbolt@landmark.com.au](mailto:peter.godbolt@landmark.com.au)

Auctioneer; Peter Godbolt, Landmark Stud Stock Ph: 0457 591 929

**Purtle Plevy Agencies Pty Ltd Patrick Purtle; 0428851704 Samuel Plevy; 0427856223**

Email: [samuel.plevy@purtleplevey.com.au](mailto:samuel.plevy@purtleplevey.com.au)

Email: [Patrick.purtle@purtleplevey.com.au](mailto:Patrick.purtle@purtleplevey.com.au)

**Vendors: Chris Knox & Helen Alexander**

Ph: (02) 6842 9101 Mobile: 0427 600 278

"Borah Station" Borah Creek Rd, Rocky Glen via Coonabarabran NSW 2357

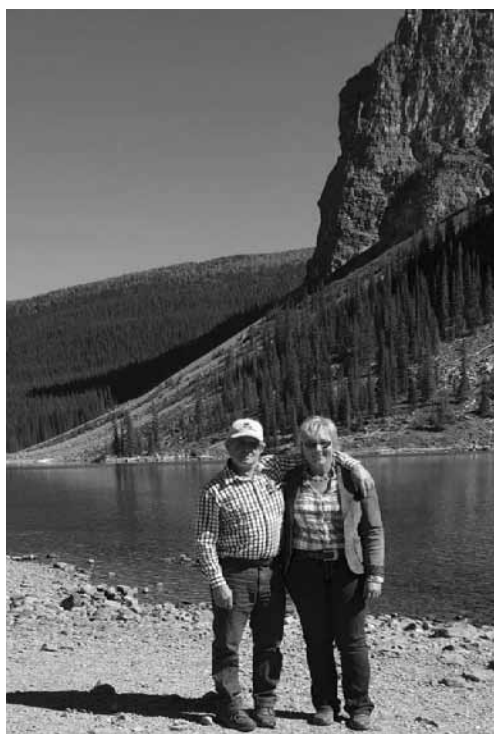
E : [dskangusandcharolais@westnet.com.au](mailto:dskangusandcharolais@westnet.com.au)

Web: [www.dskangusandcharolais@westnet.com.au](http://www.dskangusandcharolais@westnet.com.au)



Last year I reported beef market prices were high and confidence in the beef industry was on a high. Well it only got a whole lot better.

With the EYCI and feeder steer prices at an all time record high. This makes the dry, tough times many producers in their region had to endure through the summer, a little easier with rewards in the market place for all categories of beef cattle.



We are proud to present this year's sale draft as a line of top industry focussed sires to suit a wide variety of markets while maintaining performance and fertility. The two main profit drivers for the beef producer.

As you will see, we are offering a draft of long yearling bulls along with the usual rising 2 year olds. We will continue this practice in the future as we can see economic gains for our valued clients with extra longevity which means less cost per calf.

In the Angus draft you will see the first of our Pure Canadian Genetics from our donor cows purchased and flushed to outcross Canadian sires at Davis Rairdon Embryo collection centre in Alberta. Once again, Rachis sons are top of the draft and we are also seeing a solid line of bulls sired by G198 who just keeps producing commercial focussed progeny with true calving ease.

The Charolais draft is exciting with the first progeny of Golden Logie who has sired the Grand Champion at Sydney Royal and Dubbo Charolais National show this year.

We look forward to seeing you on the 11th of August and if we can be of any assistance in your selection please ask and we hope you enjoy your visit.

# Looking After Your New Bull & How Hard Should He Work?

## **An important understanding of bull management.**

Taking care of your new bull after purchase should be viewed as caring for your future genetic and financial investment. How you care for your bull in his first season can affect the long term contribution that your new genetic package will make for your herd. You will find all the pre sale feeding and health information on these sale bulls in this catalogue. Your DSK bull is fully checked, vaccinated and ready to go to work for you. But do you know just how much work he should be able to handle?

Bulls have different maturity stages but as a general rule, DSK bulls are later developers and will continue to grow well into their 3rd year of age. While a bull is still growing and developing and at the same time serving cows and maybe fighting for dominance in a multiple joining situation, he is using much more energy than a bull that has already matured. It is very important to make sure that your new bull in his first season is not overworked and underfed. This will not only affect his ability to serve cows and produce live semen, but it will have a major impact on his growth pattern to maturity which can cost you big bucks when you go to trade that bull in at the end of his working life and sell him by the kilo.

Take your bull home and settle him in for a few days with a few quiet pregnant cows, then either introduce him into his joining mob or settle him into the sires paddock. If you put him into a group of older bulls, he will be at the very bottom of the pecking order and be in danger of serious injury before you have even used him. Make sure that this paddock is large enough that bulls can retire to their own corners when they feel like they have had enough fighting. Most bulls know when it is advisable to leave a losing battle, but they need somewhere to run to. We advise that you insure your new bull for at least the first season in case of injury.

At DSK we recommend the use of single sire mating as a means of reducing injury to your bulls and also a great way of sire identifying your cattle to know which sire lines are doing the best job for your operation. Many feedlotter and prime cattle buyers prefer cattle that are sire identified. This situation can also keep your joining season short and compact. It is important that you keep mobs in a paddock that a single bull can cover, ie, he can see, smell or hear what is happening in his paddock so he doesn't miss cycling cows in small groups. It is a good idea to have a single watering point per paddock, this keeps the mob together and gives your bull easy access to cycling groups of cows.

Unfortunately with single sire mating you run the risk of unforeseen infertility in your bulls. It is most important to use bulls that have been semen tested for 70% minimum live sperm, including your older bulls, and make sure that both bulls and females have had all the necessary health vaccinations and are in a condition good enough to be able to fall pregnant while milking for a calf. Check your bull at least twice a week for any lameness or swelling around the sheath or testicles and it is a good idea to try and catch your bull mating a cow to check for penis damage or abnormal serving problems such as "corkscrew penis" where the penis is twisted making mating much more difficult if not impossible. The Australian Association of Cattle Veterinarians defines a normal, fertile bull as "expected to get 90% of 50 normal, cycling, disease free females pregnant within 9 weeks, and 60% of these should become pregnant in the first three weeks of joining." This expectation would apply to 2 year old bulls but not to younger bulls. Mating loads of 25 to 30 females with a frame score that the bull can easily mount are recommended for yearling bulls in a smaller paddock with good feed and water. Try and cut their joining season down to 6 or 8 weeks and pull them out into a good nutrition paddock or hand feed them to allow them to recover body condition and maintain strong growth. The condition of younger bulls is critical for their sperm production and it is recommended that they not be allowed to drop in condition below a fat score 3 during service.

We recommend strongly that you have a backup bull in case of injury or infertility, allow yourself an extra bull in your sire line up. You may even find that lessening your joining mobs in a few cases allows you to have that extra bull out working each season but doesn't over work a few of your bulls so that you can then use one or more of these as a backup bull if you find you need it.

Injury and illness can strike a bull at any time and while most times this can be managed quickly and with complete recovery it is important that whatever is holding your bull back from maximum workload be dealt with straight away. Not only can it be the difference between recovery and total loss but it is also a factor in how quickly your bull gets his mob in calf and that effects the producer bottom line.

We can not stress enough the importance of regularly checking your bulls before, during and after joining to keep the health of your investment in top shape to maintain future herd development and financial success.

## Advantages of the Long Yearling Bull (15 to 18 months)

It has been a concern of ours the high attrition rate of preparing 2 year old bulls for sale that the stud producer faces. Inevitable injuries rendering bulls unsaleable due to serious injuries as maturing bulls sort out their pecking order in their mob. Unlike the law of averages, odds are that the injury is to one of the top bulls and he is lost to the industry. For the first time at our 2016 sale we are starting the practice of selling Long Yearling Bulls. These sensibly prepared bulls will easily cover 30-40 females depending on paddock conditions and with sound management should develop suited to their new environment and should give their new owner an extra season or two due to the young bull not being over conditioned as a two year old.

Longevity is the key to higher profit in beef production in both bulls and females. The more calves a bull sires throughout his working life, the cost per calf decreases.



DSK TGL Legacy L34E sired by Golden Logie G66E was sold as a calf at foot in partnership to Moongool Charolais and Elite Charolais both highly regarded Queensland breeders. This young bull was shown at Sydney Royal 2016 and the Dubbo Charolais National Show 2016 and was awarded the Junior and Grand Champion Charolais award both times.

Pictured with owners from Left, Kim Groner, Elite Charolais, Peter Collins (Judge), Ivan Price, Moongool Charolais and Glen Waldron, Elite Charolais.

DSK TGL Wendy K50E also sired by Golden Logie was recently awarded the Junior Champion Female at the 2016 Dubbo National Show.



After two inspections, Golden Logie became a must have sire and was purchased in 2013 in partnership with the Price family of Moongool Charolais stud in Queensland. His first crop of calves have been outstanding. Golden Logie was purchased to add power and performance to our North American LT blood females while putting finishing ability and high maternal traits from his high milking dam. Successes of his first progeny include Junior Champion Female at the 2015 Charolais National Show and Sale. Sydney Royal 2016 saw 3 first places, Junior and Grand Champion bull and Reserve Champion Heifer. At the 2016 Charolais National Show and Sale his progeny was awarded 4 first places, Junior Champion Heifer, Junior and Grand Champion Bull, Supreme Exhibit an winner of the Sires Progeny group class. Golden Logie is going to make an impact in the Charolais breed and is fast on the way to proving himself a first class sire.

## Sire Selection with Chris Knox

Not every beef producer needs the same style of beef sire. This comes about from the wide diversity in our Australian beef markets and the vast difference in operations due to environmental, climate and location. These factors are the reason why we have variations of type and maturity patterns within breeds and individual herds. This variation in type is a widely used tool in the seed stock industry to adjust our breeding programmes as time moves forward. For example, if you want to keep breeding frame 6 cattle, you can't keep buying frame 6 bulls, every now and then you need to increase your frame score to compensate for a reduction of cow frame over time. We can use the wide variety of genetics and types on offer for the improvement of a single trait or multiple traits. Artificial insemination is a tremendous aid in this way where you can use a tremendous line up of influential individual sires from Australia and overseas to supplement your breeding programmes and widen our national genetic pool. This is why most drafts of sale bulls have a variation within the groups regardless of type of cattle or priorities on particular traits a stud breeder might be working towards in his programme.

Our operation at DSK strives to produce a larger framed animal with good muscle content and fleshing and having an easy finishing ability on a high yielding carcass which maintains a strong commercial focus and in turn will give our bull clients increased profitability throughout their own herds. You will find a variation of type in our sale draft and we feel sure the you will find that bull that will suit your individual need. We encourage clients to discuss your breeding programmes and operations with us so that we may help you to make the right selection for your future marketing options.

### **INTRAMUSCULAR FAT.** By Roger Evans, Bovine Scanning Services

Intramuscular Fat ( IMF) is the fat that is deposited within the muscle tissues of the animal. It is of interest to the beef producer because upon chilling of the beef carcass the IMF solidifies to give us marbling. The amount of marbling expressed in the carcass will have a great bearing on the economic value of the carcass and resulting profit to the producer.

The use of real-time ultrasound in measuring IMF can give the bull producer an accurate indicator or the animal's ability to deposit IMF and therefore it's ability to marble.

IMF is measured as a percentage of fat that is within the eye muscle. If an animal has an IMF% of 4.9% then 4.9% of the eye muscle area is IMF. The higher the IMF% then the greater the marbling potential of that animal.

Not only is the magnitude of the IMF% important, so too is the distribution of IMF within the muscle. IMF that is evenly distributed within the muscle will solidify into the fine flecked or honeycomb marbling that is most desired by the consumer. This fine flecking gives a greater consistency of texture, juiciness and flavour from one mouthful to the next.

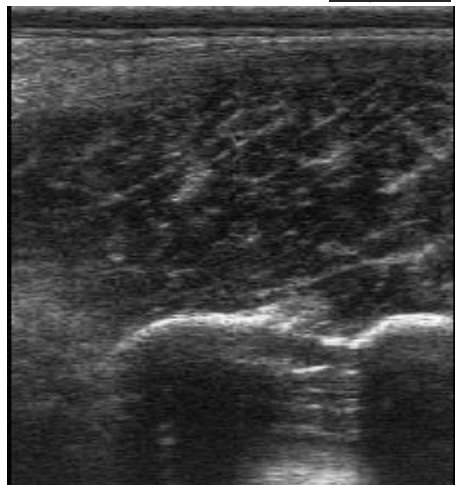
With this in mind the DSK sale bulls have been assessed for their IMF% and IMF distribution. To assess the IMF Distribution a scale from 1 to 5+ has been developed.

The higher the distribution grade reflects a finer and more even distribution of IMF. Animals with a higher distribution grade combined with a high IMF% are desired for the production of high quality beef.

Shown on supplementary sheet as Flek score

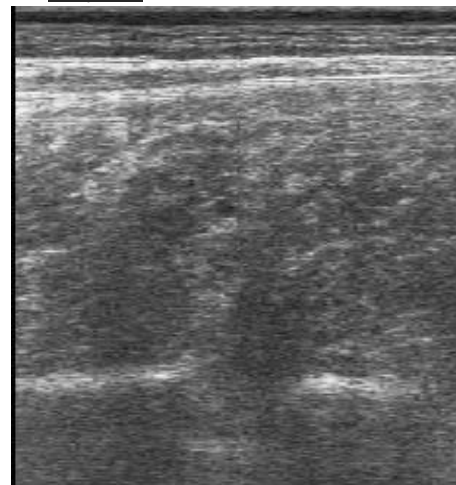
#### IMF DISTRIBUTION

1	1+	2	2+	3	3+	4	4+	5	5+
<u>Very coarse</u>					<u>Very fine</u>				



The picture on the left shows the heavy blotchy look of a 2+ score for distribution while the picture on the right shows the fine even textured distribution of a 5+ rated animal.

A note from Chris Knox. Roger Evans has been scoring IMF% distribution for us for more than 17 yrs and we have proven it to be highly heritable.



## ANGUS RECESSIVE GENETIC CONDITIONS

Where a single pair of genes controls a trait or condition it is referred to as a simple recessive trait or condition. There may be several forms of the same gene eg black (dominant) and red (recessive) for the colour gene in Angus. These gene forms are called alleles. Two copies of the recessive allele need to be present in an animal for it to be expressed. Both the sire and dam need to be a carrier (have one copy each) to have progeny that have two copies of the recessive allele.

Arthrogryposis Multiplex (AM), Neuropathic Hydrocephalus (NH) and red colour are examples of recessive conditions and traits in the Angus breed. In animals with only one copy of the recessive allele (and one copy of the dominant allele), the recessive allele isn't expressed and the animal is known as a "carrier" for the unexpressed trait or condition.

What happens when carriers are mated to other animals?

A carrier, will on average, pass the recessive allele to a random half (50 %) of its progeny. When a carrier bull and carrier cow is mated, there should be a 25% chance that the progeny produced will have two dominant alleles and so will never pass on the undesirable allele. There should be a 50% chance that the mating will produce a carrier. However, there could be a 25% chance that the progeny have two copies of the recessive allele. If animals free of the recessive allele are mated to carrier animals the recessive trait or condition will not be expressed at all. Approximately half (50%) of the progeny could be expected to be carriers while the other half are expected to be free.

Recessive gene status reporting

Where a DNA test can be used to determine whether an animal is a carrier or free of the recessive gene the status of animals is being reported using five categories. For example, for the AM condition:

AMF Tested AM free – have zero copies of the recessive allele

AMFU Expected to be AM free - based on pedigree analysis

AM\_\_%\_% probability that the animal may be an AM carrier

AMC Tested AM carrier – have one copy of the recessive allele

AMA AM-Affected – have two copies of the recessive allele

RDC is a tested red coat colour gene carrier and RDF is tested as red coat colour gene free.

Registration certificates and the Angus Australia web-database will display these codes. This information can be accessed by conducting a "Database Search" from the Angus website and clicking on the "Genetic Test Results" link on the animal details page. The status of untested animals is subject to change and will be re-analysed and adjusted each week as DNA test results of relatives are

## Breedplan Averages for 2016

Breed Avg. EBVs for 2014 Born Calves June 2016 Australasian Charolais GROUP BREEDPLAN																
Calving	Calving	Gestation	Birth	200	400	600	Mat.	Milk	Scrotal		Carcase	Eye	Rib	Rump	Retail	IMF
Ease	Ease	Length	Wt.	Day	Day	Day	Cow	(kg)	Size		Wt.	Muscle	Fat	Fat	Beef	(%)
DIR (%)	DTRS (%)	(days)	(kg)	Wt.	Wt.	Wt.	Wt.	(kg)	(cm)		(kg)	Area (sq.cm)	(mm)	(mm)	Yield (%)	
1.2	0.8	-2.4	0.5	12	23	31	33	7	1		19	1.5	0.2	0.3	0.2	0.2

Breed Avg. EBVs for 2014 Born Calves July 2016 Angus Australia BREEDPLAN																
Calving	Calving	Gestation	Birth	200	400	600	Mat.	Milk	Scrotal	Days	Carcase	Eye	Rib	Rump	Retail	IMF
Ease	Ease	Length	Wt.	Day	Day	Day	Cow	(kg)	Size	To	Wt.	Muscle	Fat	Fat	Beef	(%)
DIR (%)	DTRS (%)	(days)	(kg)	Wt.	Wt.	Wt.	Wt.	(kg)	(cm)	Calving	(kg)	Area (sq.cm)	(mm)	(mm)	Yield (%)	
-0.2	-0.1	-3.5	4.3	41	75	98	86	14	1.6	-3.6	54	4.4	0	0	0.3	1.5

## ANGUS & CHAROLAIS BREEDPLAN Understanding EBVs and Accuracy

An animal's breeding value is its genetic merit, half of which will be passed on to its progeny. While we will never know the exact breeding value, for performance traits it is possible to make good estimates. These estimates are called Estimated Breeding Values (EBVs).

In the calculation of EBVs, the performance of individual animals within a contemporary group is directly compared to the average of other animals in that group. A contemporary group consists of animals of the same sex and age class within a herd, run under the same management conditions and treated equally. Indirect comparisons are made between animals reared in different contemporary groups, through the use of pedigree links between the groups.

EBVs are expressed in the units of measurement for each particular trait. They are shown as + ive or - ive differences between an individual animal's genetics difference and the genetic base to which the animal is compared. For example, a bull with an EBV of +50 kg for 600-Day Weight is estimated to have genetic merit 50 kg above the breed base of 0 kg. Since the breed base is set to an historical benchmark, the average EBVs of animals in each year drop has changed over time as a result of genetic progress within the breed.

The absolute value of any EBV is not critical, but rather the differences in EBVs between animals. Particular animals should be viewed as being "above or below breed average" for a particular trait.

Whilst EBVs provide the best basis for the comparison of the genetic merit of animals reared in different environments and management conditions, they can only be used to compare animals analysed within the same analysis. Consequently, ANGUS BREEDPLAN EBVs cannot be validly compared with EBVs for any other breed.

Although EBVs provide an estimate of an animal's genetic merit for a range of production traits, they do not provide information for all of the traits that must be considered during selection of functional animals. In all situations, EBVs should be used in conjunction with visual assessment for other traits of importance (such as structural soundness, temperament, fertility etc). A recommended practice is to firstly select breeding stock based on EBVs and to then select from this group to ensure that the final selections are otherwise acceptable.

## ANGUS & CHAROLAIS BREEDPLAN Understanding EBVs and Accuracy continued.

EBVs are published for a range of traits covering fertility, calving ease, milking ability, growth, carcass merit and feed efficiency. When using EBVs to assist in selection decisions it is important to achieve a balance between the different groups of traits and to place emphasis on those traits that are important to the particular herd, markets and environment. One of the advantages of having a comprehensive range of EBVs is that it is possible to avoid extremes in particular traits and select for animals with balanced overall performance.

Calving Ease EBVs (%) are based on calving difficulty scores, birth weights and gestation length information. More positive EBVs are favourable and indicate easier calving.

CE % Direct = Direct Calving Ease - The EBV for direct calving ease indicates the influence of the sire on calving ease in purebred females calving at two years of age.

CE % Daughters = Daughters' Calving Ease - The EBV for daughters' calving ease indicates how easily that sire's daughters will calve at two years of age.

Gestation Length EBV (days) is an estimate of the time from conception to the birth of the calf and is based on AI and hand mating records. Lower (negative) GL EBVs indicate shorter gestation length and therefore easier calving and increased growth after birth.

Birth Weight EBV (kg) is based on the measured birth weight of progeny, adjusted for dam age. The lower the value the lighter the calf at birth and the lower the likelihood of a difficult birth. This is particularly important when selecting sires for use over heifers.

200-Day Growth EBV (kg) is calculated from the weight of progeny taken between 80 and 300 days of age. Values are adjusted to 200 days and for age of dam. This EBV is the best single estimate of an animal's genetic merit for growth to early ages.

400-Day Weight EBV (kg) is calculated from the weight of progeny taken between 301 and 500 days of age, adjusted to 400 days and for age of dam. This EBV is the best single estimate of an animal's genetic merit for yearling weight.

600-Day Weight EBV (kg) is calculated from the weight of progeny taken between 501 and 900 days of age, adjusted to 600 days and for age of dam. This EBV is the best single estimate of an animal's genetic merit for growth beyond yearling age.

Mature Cow Weight EBV (kg) is based on the cow weight when the calf is weighed for weaning, adjusted to 5 years of age. This EBV is an estimate of the genetic difference in cow weight at 5 years of age and is an indicator of growth at later ages and potential feed maintenance requirements of the females in the breeding herd. Steer breeders wishing to grow animals out to a larger weight may also use the Mature Cow Weight EBV.

Milk EBV (kg) is an estimate of an animal's milking ability. For sires, this EBV indicates the effect of the daughter's milking ability, inherited from the sire, on the 200-day weights of her calves. For dams, it indicates her milking ability.

Scrotal Size EBV (cm) is calculated from the circumference of the scrotum taken between 300 and 700 days of age and adjusted to 400 days of age. This EBV is an estimate of an animal's genetic merit for scrotal size. There is also a small negative correlation with age of puberty in female progeny and therefore selection for increased scrotal size will result in reduced age at calving of female progeny.

Days to Calving EBV (days) indicates the fertility of the daughters of the sire. It is the time interval between the day when the female is first exposed to a bull in a paddock mating to the day when she subsequently calves. A negative EBV for days to calving indicates a shorter interval from bull-in date to calving and therefore higher fertility.

Carcass Weight EBV (kg) is based on abattoir carcass records and is an indicator of the genetic differences in carcass weight at the standard age of 650 days.

Eye Muscle Area EBV (sq cm) is calculated from measurements from live animal ultrasound scans and from abattoir carcass data, adjusted to a standard 300 kg carcass. This EBV estimates genetic differences in eye muscle area at the 12/13th rib site of a 300 kg dressed carcass. More positive EBVs indicate better muscling on animals. Sires with relatively higher EMA EBVs are expected to produce better-muscled and higher percentage yielding progeny at the same carcass weight than will sires with lower EMA EBVs.

Rib Fat and Rump Fat EBVs (mm) are calculated from measurements of subcutaneous fat depth at the 12/13-rib site and the P8 rump site (from live animal ultrasound scans and from abattoir carcasses) and are adjusted to a standard 300 kg carcass. These EBVs are indicators of the genetic differences in fat distribution on a standard 300 kg carcass. Sires with low, or negative, fat EBVs are expected to produce leaner progeny at any particular carcass weight than will sires with higher EBVs.

Retail Beef Yield EBV (%) indicates genetic differences between animals for retail yield percentage in a standard 300 kg carcass. Sires with larger EBVs are expected to produce progeny with higher yielding carcasses.

Intramuscular Fat EBV (%) is an estimate of the genetic difference in the percentage of intramuscular fat at the 12/13th rib site in a 300 kg carcass. Depending on market targets, larger more positive values are generally more favourable.

### Accuracy

Accuracy (%) is based on the amount of performance information available on the animal and its close relatives - particularly the number of progeny analysed. Accuracy is also based on the heritability of the trait and the genetic correlations with other recorded traits. Hence accuracy indicates the "confidence level" of the EBV. The higher the accuracy value the lower the likelihood of change in the animal's EBV as more information is analysed for that animal or its relatives. Even though an EBV with a low accuracy may change in the future, it is still the best estimate of an animal's genetic merit for that trait. As more information becomes available, an EBV is just as likely to increase in value, as it is to decrease. Accuracy values range from 0-99%. The following guide is given for interpreting accuracy:

As a rule, animals should be compared on EBVs regardless of accuracy. However, where two animals have similar EBVs the one with higher accuracy could be the safer choice, assuming other factors are equal.

For further information please contact Angus Australia or Angus BREEDPLAN or the Charolais Society or Charolais BREEDPLAN.

Accuracy range	Interpretation
less than 50%	Low accuracy. EBVs are preliminary and could change substantially as more performance information becomes available.
50-74%	Medium accuracy, usually based on the animal's own records and pedigree.
75-90%	Medium-high accuracy. Some progeny information included. EBVs may change with addition of more progeny data.
more than 90%	High accuracy estimate of the animal's true breeding value.



# Sale Information

- Sale Location:** Please note the sale will be held at the Gunnedah Saleyards, Boggabri Road, Gunnedah.
- Sale will start 1pm, Thu. 11th August. Please bring this catalogue with you to the sale to be sure of having one.**
- Inspections:** All bulls will be penned at the Gunnedah Saleyards by 10am sale day. Private inspections are welcomed and can be arranged prior to sale day at Borah Station, Rocky Glen by calling either the vendors or the sale agents.
- Supplementary Sheets:** Current weights, scans and scrotal measures will be available on sale day along with any catalogue alterations or withdrawals. Be sure to get one when you arrive.
- Insurance:** Purchaser to arrange insurance cover where required. There will be representatives available on sale day to take care of your livestock insurance needs or contact the selling agents to arrange this for you.
- The Vendors and their agents take all care but no responsibility for purchases after the sale has been made.**
- Rebate:** A 2% rebate will be payable to outside agents on condition that they either attend the sale and introduce themselves to the selling agents, or who nominate potential purchasers in writing prior to 5pm on Wed 10th August with the selling agents. **Agent rebate is conditional upon full settlement of account within 7 days of sale.**
- Transport:** The Purchaser will be fully responsible for the safe delivery of their purchases. Bull groups are noted in the individual lot information in this catalogue and will be also provided on the supplementary sheet. It is advised that if bulls of different groups have to be transported together that they are where possible separated into different pens or if that is not possible, packing as tightly as comfortably and safely possible leaves less room for bulls to fight while traveling.
- The selling agents will act as transport co-ordinators so please do not leave the sale before arranging transport with them. Scott Cooper 0427674411; Patrick Purtle 0428851704; Sam Plevey 0427856223**
- Bid Card System:** The sale will be conducted under the bid card auction system with all standard terms and conditions of sale as stated by the NSW Livestock Agents Association and all potential buyers are required to register all relevant details with the selling agents prior to purchase and a delivery and instruction sheet upon completion of the sale for all purchases. No verbal delivery instructions can be accepted and written instructions must have full contact details of delivery location along with legible directions.
- Fertility and Health:** Due to the unavailability of Vibrovax vaccine across the country prior to the sale, this year the sale bulls will have been vaccinated with 7 in 1 only and drenched with Eprinex pour on and semen tested and inspected externally and internal palpation by Bovine fertility specialist, Dr Ced Wise B.V.Sc., M.S., Diplomate ACT, M.A.C.V.Sc. Bulls have been tested negative for BVDV Persistently Infected. Bulls are in good forward condition and are ready for immediate work. Borah Station is in a Protected area for Bovine Johnes Disease. Lots 5,6,7,9 & 12 were shown at Sydney Royal in March & lightly foot trimmed before then and not since. No other bull in this draft has been hoof trimmed at any stage.
- Fertility Guarantee:** Please speak to the vendors within 12 months of sale if you feel you have a fertility problem with your bull. All efforts have been made to ensure your bulls are suitable for work under appropriated conditions. Injuries or infertility due to malnutrition, illness contracted post sale or mistreatment after the sale are the purchasers responsibility. Please handle your bull safely and care for his and your own welfare.
- Feeding:** Bulls have been raised on pasture & finished on ad lib cereal hay and light hand fed grain rations. All bulls are ready for immediate work & will not require supplementary feeding where good pasture is available.
- Disclaimer:** While every care is taken to ensure the safety of all persons and property the vendors and their agents are not liable for any damage or injury caused or contributed to by us or by any other person whether caused or contributed to or by negligence, deliberate act or unlawful conduct. This applies to the owners, agents and their employees of the business activities of CR Knox and HD Alexander. Persons enter the sale pens at their own risk and are discouraged from doing so. Bulls are unpredictable large animals and all care must be taken when handling any livestock.

**Bulls will be presented into the ring in groups of 2 or more to try and reduce stress for these animals during the sale. Vendors reserve the right to present bulls into the sale ring in an order not necessarily as shown in catalogue order.**

<b>Lot 1</b>	<b>DSK KG KODIAK K29</b>	Age: <b>22</b>	ANGUS HBR	Animal ID: <b>NKSK29</b>
	Born: 17/10/2014	Group; <b>1-A</b>	Genetic Status:	AMFU, NHFU, CAFU, DDFU
	CONNEALY ONWARD USA14216491		G A R RETAIL PRODUCT USA13395329	
	SITZ UPWARD 307R USA14963730		CONNEALY MENTOR 7374 USA15832714	
	SITZ HENRIETTA PRIDE 81M USA14087650		EXECUTA OF CONANGA 939 USA14584130	
<b>Sire: KANSAS UPWARD G198(AI) NKLG198</b>		<b>Dam: DSK CMT FLOWER H15(AI) NKSH15</b>		
	BON VIEW NEW DESIGN 1407 USA1407		G V POWER DRIVE 7369 USA7369	
	KANSAS ANNIE Y656(AI)(ET) NKLY656		DSK UJ FLOWER B16(AI) NKSB16	
	AMAROO EXPO ANNIE U024(AI)(ET) BYEU024		DSK V6 FLOWER Y30 NKSY30	

Standout sire to start the sale. Heifers first calf and has always looked the goods. His dam will be one of our best from the cow line that produced Glenoch Megaforce. An easy doing, high performance sire with a strong topline.

CALVING EASE		July 2016 Angus Australia BREEDPLAN															
	CED	DTRS	GL	BW	200	400	600	MCWT	MILK	SS	DTC	CWT	EMA	RIB	RUMP	RBY%	IMF%
EBV	1	0.1	-4.4	4	46	81	107	87	16	1.9	-4.3	61	7.1	-0.1	-0.6	1.5	0.9
Acc	40%	33%	53%	69%	57%	54%	56%	53%	42%	46%	29%	47%	43%	45%	44%	42%	41%

Traits Observed: BWT,400WT,SS,FAT,EMA,IMF

Purchaser:

Price:

<b>Lot 2</b>	<b>DSK HR KHAKI K12(AI)(ET)</b>	Age: <b>24</b>	ANGUS HBR	Animal ID: <b>NKSK12</b>
	Born: 23/07/2014	Group; <b>1-A</b>	Genetic Status:	AMFU, NHFU, CAFU, DD4%
	R&J SPADE 1204 USA1204		DOUBLE A WILLIE BOY 2S CAN2S	
	HOFF HI SPADE S C 491 USASC491+		BLACK VELVET WILLYBOY J31+89(AI) WZJJ31+89	
	HOFF MISS SCOTCH CAP 074 USA074		BLACK VELVET REGENCY D37. WZJD37+84	
<b>Sire: S V F HI ROAD USA956</b>		<b>Dam: DSK WB DANDLOO P22 NKSP22</b>		
	Q A S TRAVELER 23-4 USA23-4		6+ HORIZON(ET) SIX39	
	LADY BLACKBIRD 111 G D A R USA111		TE MANIA DANDLOO F156.(AI)(ET) VTMF156+86	
	BLACKBIRD LADY 851 G D A R USA851		TE MANIA DANDLOO D108. VTMD108+84	

18 year old embryo here with ET brothers having worked in studs. Hi Road is invaluable for his female breeding potential with many of our top bulls over the years being sons of Hi Road cows. Dam, P22 was a standout breeder with big capacity and high maternal values and has daughters sold into many studs and working so well they are now used as donors.

CALVING EASE		July 2016 Angus Australia BREEDPLAN															
	CED	DTRS	GL	BW	200	400	600	MCWT	MILK	SS	DTC	CWT	EMA	RIB	RUMP	RBY%	IMF%
EBV	-1	-1.5	-0.4	5	36	63	90	93	10	-0.1	-1.9	46	0.1	-1.3	-1.3	-0.2	1
Acc	56%	49%	62%	73%	69%	70%	68%	65%	63%	72%	52%	62%	61%	62%	63%	59%	57%

Traits Observed: BWT,200WT,400WT,SS,FAT,EMA,IMF

Purchaser:

Price:

<b>Lot 3</b>	<b>DSK JDV KAKADU K31(AI)(ET)</b>	Age: <b>22</b>	ANGUS HBR	Animal ID: <b>NKSK31</b>
	Born: 16/10/2014	Group; <b>1-A</b>	Genetic Status:	AMFU, NHFU, CAFU, DDFU
	BON VIEW NEW DESIGN 878 USA878		R R 9440 SCOTCH CAP 1483 USA1483	
	CONNEALY REFLECTION USA14528330		R R FERDINAND 758D USA758D	
	HAPPY GRILL OF CONANGA USA13447172		BLACKCAP OF R R 5367 USA5367	
<b>Sire: JINDRA DOUBLE VISION USA16748826</b>		<b>Dam: MONTEREY DUTCHESS U3(AI) WGUJ3</b>		
	HOFF LIMITED EDITION S C 594 USA13119152		WILCO NEPTUNE.(AI)(ET) WLCD42+84	
	HOFF RACHEL 8312 405 USA14806260		KARRIDALE DUTCHESS M14+92 WGJM14+92	
	HOFF MISS EXPO S C 4223 USA13145626		TERANGA HI-BALL H70+88(TW) WTEH70+88	

First Double Vision son we have offered and from our proven donor dam, U3 who was the dam of our 2014 sale topper. K31 will improve his Breedplan figures being held back due to his dam's old pedigree and herd of origin being a non Breedplan recording herd. A long bodied, smooth skinned bull with outlook and a big carcass.

CALVING EASE		July 2016 Angus Australia BREEDPLAN															
	CED	DTRS	GL	BW	200	400	600	MCWT	MILK	SS	DTC	CWT	EMA	RIB	RUMP	RBY%	IMF%
EBV	1.8	1.3	-2.7	3.6	35	72	85	71	11	-0.3	-1.9	53	2.1	0	-0.2	-0.2	0.7
Acc	44%	33%	59%	69%	63%	64%	62%	56%	47%	67%	35%	54%	54%	54%	54%	50%	48%

Traits Observed: BWT,400WT,SS,FAT,EMA,IMF

Purchaser:

Price:



Young Dale Xcaliber 32X the next sire in use at DSK. Calves on the ground are more than impressive with length, width and great sire appeal even as calves. His daughters are outstanding also. His progeny have so much muscle that they look like European cattle but have that traditional Angus softness. We placed one of his first sons in the carcass competition at this year's Sydney Royal show while only 9 months of age he had good muscling and fat covers. We think that this sire will be a great match for our breeding program at DSK.

**Lot 4** **DSK RR KAPLIN K19(AI)(ET)** Age: **23** ANGUS HBR Animal ID: **NKSK19**  
 Born: 12/09/2014 Group: **1-A** Genetic Status: AMFU, NHFU, CAFU, RDF, DDFU  
 VERMILION DATELINE 7078 USA7078  
 REMITALL NIGHTHAWK 37N CAN1171920  
 DIAMOND D EVERA 073G CAN944010  
**Sire: REMITALL H RACHIS 21R CAN1274555**  
 O G L BATTLE CRY 427 128 USA12215320  
 HENDERSON MISSIE 32'02 CAN1122972  
 HENDERSON MISIE 2'97 CAN890141  
**Dam: DSK ABE SHADY LADY D1 NKSD1**  
 S V F HI ROAD USA956  
 DSK HR SHADY LADY W62(AI) NKSW62  
 NO.1 SHADY LADY P16(AI) WSP16

Top sire prospect from a top breeding cow family. Dam is a 3/4 sister to DSK Ahead of the Pack A57 who was unbeaten at Royal shows and was Interbreed Champion at Sydney Royal in 2007. K19 is a moderate framed bull with great outlook, excellent structure and a very good skin type. Used as a yearling on stud cows and heifers. Maternal brother topped the 2013 sale and working successfully in the Glenisa Angus herd.

CALVING EASE		July 2016 Angus Australia BREEDPLAN															
	CED	DTRS	GL	BW	200	400	600	MCWT	MILK	SS	DTC	CWT	EMA	RIB	RUMP	RBY%	IMF%
EBV	-3.3	-2.6	-1.8	6.6	47	85	108	106	15	2.3	-2.9	62	1.3	-1.5	-0.9	1.1	0.7
Acc	41%	31%	55%	69%	62%	63%	62%	56%	51%	66%	30%	52%	52%	52%	53%	48%	46%

Traits Observed: BWT,400WT,SS,FAT,EMA,IMF

Purchaser:

Price:



DSK RR Kaplin K19. Outstanding Rachis son & Potential Stud Sire on Offer.

**Lot 5** **DSK UJ KLINGER K15(AI)(ET)** Age: **24** ANGUS HBR Animal ID: **NKSK15**  
 Born: 02/08/2014 Group: **2-A** Genetic Status: AMFU, NHFU, CAFU, RDC, DDFU  
 PINE DRIVE BIG SKY USA9894245  
 BROST POWER DRIVE USA251  
 BROST ELBA 916 USA916  
**Sire: G V POWER DRIVE 7369 USA7369**  
 ANKONIAN CORNHUSKER USA785532  
 GREEN VALLEY ECTESSA 82 85 USA727688  
 GREEN VALLEY ECTESSA 376 82 USA239440  
**Dam: NO.1 HOT STUFF 1ST M14(AI)(ET) WSPM14**  
 SIR WMS WAMPUM CAN420D  
 NO.1 HOT STUFF+88(AI) WSPH1+88  
 NO.1 HOT DOT F1. WSPF1+86

The result of an embryo made 20 years ago. An absolute stand out. A young yearling bull with a big future. Real outcross genetics from one of our original foundation cows who was a full sister to a Royal Show Interbreed Champion. These 20 year old EBV's are well above for his time and he proves himself extremely well above "modern" Angus genetics.

CALVING EASE		July 2016 Angus Australia BREEDPLAN															
	CED	DTRS	GL	BW	200	400	600	MCWT	MILK	SS	DTC	CWT	EMA	RIB	RUMP	RBY%	IMF%
EBV	-0.3	-1.7	-1.7	5	37	63	80	80	11	2.1	-3	50	1.9	-1.5	0.1	0.2	0.3
Acc	56%	51%	62%	74%	69%	70%	69%	65%	64%	72%	52%	62%	62%	62%	63%	59%	57%

Traits Observed: BWT,200WT,400WT(x2),600WT,SS,FAT,EMA,IMF

Purchaser:

Price:



<b>Lot 6</b>	<b>DSK RR LONGSHOT L40(AI)(ET)</b>	Age: <b>18</b>	ANGUS HBR	Animal ID: <b>NKSL40</b>
	Born: 23/02/2015	Group: <b>2-A</b>	Genetic Status: AMFU, NHFU, CAFU, DDFU	
	VERMILION DATELINE 7078 USA7078		PAPA EQUATOR 2928 USA2928	
	REMITALL NIGHTHAWK 37N CAN1171920		COLDSTREAM PARADOX 73N CAN1155260	
	DIAMOND D EVERA 073G CAN944010		COLDSTREAM BLACKBIRD 53G CAN888521	
<b>Sire: REMITALL H RACHIS 21R CAN1274555</b>			<b>Dam: COLDSTREAM LADY HEATHER 92S CAN1345164</b>	
O G L BATTLE CRY 427 128 USA12215320			COLDSTREAM BONNIE DOON 29H CAN934497	
HENDERSON MISSIE 32'02 CAN1122972			COLDSTREAM HEATHER WHYTE 42K CAN1014456	
HENDERSON MISIE 2'97 CAN890141			COLDSTREAM HEATHER WHYTE 32D CAN807147	



A top sire prospect to introduce our Canadian dam's progeny. Dam was purchased at the world recognised Coldstream Angus herd dispersal. L40 is a long bodied, high growth, stylish bull showing all the usual Rachis attributes. A full sister won her class at the 2016 Angus Roundup and was 2nd at Sydney and our top seller. L40 will produce outstanding feeder progeny and magnificent daughters.

CALVING EASE		July 2016 Angus Australia BREEDPLAN															
	CED	DTRS	GL	BW	200	400	600	MCWT	MILK	SS	DTC	CWT	EMA	RIB	RUMP	RBY%	IMF%
EBV	-2.9	-1.5	-1	6.5	51	92	112	109	14	2.3	-3.9	67	1.6	-2	-1.6	1.7	0.5
Acc	39%	28%	49%	72%	64%	66%	62%	56%	52%	67%	27%	53%	53%	54%	53%	48%	46%

Traits Observed: BWT,400WT,SS,FAT,EMA,IMF

Purchaser:

Price:



DSK RR Longshot L40. Outstanding Rachis son & Potential Stud Sire on Offer.

<b>Lot 7</b>	<b>DSK RR LOTTO L38(AI)(ET)</b>	Age: <b>18</b>	ANGUS HBR	Animal ID: <b>NKSL38</b>
	Born: 20/02/2015	Group: <b>2-A</b>	Genetic Status: AMFU, NHFU, CAFU, DDFU	
	VERMILION DATELINE 7078 USA7078		DMM AMBUSH 03M CAN1134412	
	REMITALL NIGHTHAWK 37N CAN1171920		DBRL 03M TITAN 4T CAN1392285	
	DIAMOND D EVERA 073G CAN944010		DBRL BLACKBIRD 2N CAN1160168	
<b>Sire: REMITALL H RACHIS 21R CAN1274555</b>			<b>Dam: COLDSTREAM BLACKBIRD 73Y CAN1606034</b>	
O G L BATTLE CRY 427 128 USA12215320			ANGUS ACRES TEX 16S CAN603624	
HENDERSON MISSIE 32'02 CAN1122972			COLDSTREAM BLACKBIRD 53G CAN888521	
HENDERSON MISIE 2'97 CAN890141			COLDSTREAM BLACKBIRD 63E CAN839187	



A stout made Rachis son full of muscle and plenty of finishing ability. Dam, 73Y is a maternal sister to Coldstream Paradox who is the sire of our other Coldstream dam, Lady Heather 92S and who attracted us to the Coldstream dispersal. L38 will add weight and substance to his calves that will suit supermarket or feedlot markets.

CALVING EASE		July 2016 Angus Australia BREEDPLAN															
	CED	DTRS	GL	BW	200	400	600	MCWT	MILK	SS	DTC	CWT	EMA	RIB	RUMP	RBY%	IMF%
EBV	-2.2	-1.8	-0.4	6	44	78	94	89	11	0.9	-4	56	1.6	-1	-0.1	0.5	0.5
Acc	38%	27%	48%	72%	64%	66%	62%	56%	52%	68%	25%	54%	53%	54%	53%	49%	46%

Traits Observed: BWT,400WT,SS,FAT,EMA,IMF

Purchaser:

Price:



Lot 8	DSK RR LOADED L35(AI)(ET)	Age: 18	ANGUS HBR	Animal ID: NKSL35
	Born: 19/02/2015	Group; 2-A	Genetic Status: AMFU, NHFU, CAFU, DDFU	
	VERMILION DATELINE 7078 USA7078		O S U 6T6 ULTRA USA11870571	
	REMITALL NIGHTHAWK 37N CAN1171920		HOFF ULTRA S C 108 USASC108	
	DIAMOND D EVERA 073G CAN944010		HOFF MISS NORTHLANDER SC 908 USASC908	
Sire:	REMITALL H RACHIS 21R CAN1274555		Dam: DSK HU PANDA W9(AI)(ET) NKSW9	
	O G L BATTLE CRY 427 128 USA12215320		PALES NE MAGISTRATE M12+92(AI)(ET) NJUM12+92	
	HENDERSON MISSIE 32'02 CAN1122972		DSK PM PANDA R3 NKSR3	
	HENDERSON MISIE 2'97 CAN890141		DSK WB PANDA M7+92(AI)(ET) NKSM7+92	

Old W9 has done it again. Cherished donor at DSK and daughter of Panda R3 who began the best of the many Royal Champion producing DSK Panda line. L35 is a big framed bull with a strong topline and loads of sire appeal. He will produce top feeder steers while his daughters will make top cows.

CALVING EASE				July 2016 Angus Australia BREEDPLAN													
	CED	DTRS	GL	BW	200	400	600	MCWT	MILK	SS	DTC	CWT	EMA	RIB	RUMP	RBY%	IMF%
EBV	-0.6	-0.8	-1.5	5.6	39	74	91	92	14	0.5	-3	52	1.5	-1.1	-0.4	0.6	0.5
Acc	46%	34%	58%	74%	66%	67%	66%	60%	55%	70%	35%	56%	56%	57%	57%	52%	50%

Traits Observed: BWT,400WT,SS,FAT,EMA,IMF

Purchaser:

Price:

Lot 9	DSK RR LUSTY L62(AI)(ET)	Age: 16	ANGUS HBR	Animal ID: NKSL62
	Born: 01/04/2015	Group; 2-A	Genetic Status: AMFU, NHFU, CAFU, DDFU	
	VERMILION DATELINE 7078 USA7078		DMM AMBUSH 03M CAN1134412	
	REMITALL NIGHTHAWK 37N CAN1171920		DBRL 03M TITAN 4T CAN1392285	
	DIAMOND D EVERA 073G CAN944010		DBRL BLACKBIRD 2N CAN1160168	
Sire:	REMITALL H RACHIS 21R CAN1274555		Dam: COLDSTREAM BLACKBIRD 73Y CAN1606034	
	O G L BATTLE CRY 427 128 USA12215320		ANGUS ACRES TEX 16S CAN603624	
	HENDERSON MISSIE 32'02 CAN1122972		COLDSTREAM BLACKBIRD 53G CAN888521	
	HENDERSON MISIE 2'97 CAN890141		COLDSTREAM BLACKBIRD 63E CAN839187	



A full ET brother to Lot 7 and showing the same patterns with a moderate frame and lots of muscling and good weight for age. Will put weight and shape into his progeny.

CALVING EASE				June 2016 Angus Australia BREEDPLAN													
	CED	DTRS	GL	BW	200	400	600	MCWT	MILK	SS	DTC	CWT	EMA	RIB	RUMP	RBY%	IMF%
EBV	-2.4	-1.9	-0.3	6.2	45	80	97	94	11	1.2	-3.5	58	1.4	-1.6	-0.9	0.8	0.5
Acc	38%	27%	48%	72%	64%	66%	62%	56%	52%	68%	25%	54%	53%	54%	53%	49%	46%

Traits Observed: BWT,400WT,SS,FAT,EMA,IMF

Purchaser:

Price:

Lot 10	DSK RR LATTITUDE L52(AI)(ET)	Age: 17	ANGUS HBR	Animal ID: NKSL52
	Born: 06/03/2015	Group; 2-A	Genetic Status: AMFU, NHFU, CAFU, DDFU	
	VERMILION DATELINE 7078 USA7078		O S U 6T6 ULTRA USA11870571	
	REMITALL NIGHTHAWK 37N CAN1171920		HOFF ULTRA S C 108 USASC108	
	DIAMOND D EVERA 073G CAN944010		HOFF MISS NORTHLANDER SC 908 USASC908	
Sire:	REMITALL H RACHIS 21R CAN1274555		Dam: DSK HU PANDA W9(AI)(ET) NKSW9	
	O G L BATTLE CRY 427 128 USA12215320		PALES NE MAGISTRATE M12+92(AI)(ET) NJUM12+92	
	HENDERSON MISSIE 32'02 CAN1122972		DSK PM PANDA R3 NKSR3	
	HENDERSON MISIE 2'97 CAN890141		DSK WB PANDA M7+92(AI)(ET) NKSM7+92	

We have always admired this bull for his shape and outlook with good structure. Full ET brother to Lot 8 from our performance Panda line. A stand out young sire who will suit all markets from a great female line. Will leave great daughters.

CALVING EASE				June 2016 Angus Australia BREEDPLAN													
	CED	DTRS	GL	BW	200	400	600	MCWT	MILK	SS	DTC	CWT	EMA	RIB	RUMP	RBY%	IMF%
EBV	-2.1	-1.5	-1	6.5	41	75	94	98	14	1	-2.3	54	1.4	-2.2	-1.7	1	0.7
Acc	46%	34%	58%	74%	66%	67%	66%	60%	55%	70%	35%	56%	56%	57%	57%	52%	50%

Traits Observed: BWT,400WT,SS,FAT,EMA,IMF

Purchaser:

Price:

Lot 11	DSK TGL KOSTA K56E (P) (R/F)	Age: 21	CHAROLAIS	Animal ID: DSKK56E
	Born: 18/11/2014	Group; SINGLE	Red factor Polled Registered	
	TEMANA XOROX TJX77E (D)		LT WESTERN SPUR 2061 PLD M645785 (P) OAU2061E (P)	
	YACCAMOO COWBOY (P) PIK15E (P)		LT WESTERN EDGE 4057 PLD M686616 (P) OAUZ6616E (P)	
	YACCAMOO (AI) (P) PIKX20E (P)		LT DUCHESS OF MAC 7076 P PED-2993E (H)	
Sire:	TEMANA GOLDEN LOGIE G66E (P) (R/F) TJG66E (P)		Dam: DSK EDGE BEATRIX E47E (AI) (P) DSK E47E (P)	
	MEILLARD RJ OAFR7196F (H)		AYR HUELVA'S HUSTLER (AI) AYRT100E	
	TEMANA X104 (AI) (ET) TJX104E (D)		DSK T100 BEATRIX Y18 DSKY18E (H)	
	TEMANA LORETTA (P/S) TJL78E (S)		DSK BEATRIX V1 (P) DSKV1E (P)	

Top sire prospect here in a red factor, polled, bull. A smooth made, strong muscled, easy finishing bull. A strong maternal pedigree with Y18 who was a very consistent breeder and one of our best dams.

CALVING EASE				June 2016 Australasian Charolais GROUP BREEDPLAN													
	CED	DTRS	GL	BW	200	400	600	MCWT	MILK	SS		CWT	EMA	RIB	RUMP	RBY%	IMF%
EBV	2	3.4	-2.7	0.1	5	13	16	14	8	0.3		9	0.3	-0.1	-0.1	0	0.1
Acc	37%	30%	46%	68%	53%	58%	55%	51%	33%	63%		45%	37%	38%	36%	39%	36%

Traits Observed: BWT,400WT(x2),SS,FAT,EMA,IMF

Purchaser:

Price:

<b>Lot 12</b>	<b>DSK TGL LAMEBRAIN L21E (P)</b>	<b>Age: 18</b>	<b>CHAROLAIS</b>	<b>Animal ID: DSKL21E</b>
	<b>Born: 25/02/2015</b>	<b>Group: SINGLE</b>	<b>White Polled</b>	<b>Registered</b>
	TEMANA XOROX TJX77E (D)		ROSEDALE YOUR IT MRY84E (H)	
	YACCAMOO COWBOY (P) PIKC15E (P)		ARABAR CAELAN (P) DRWC4E (P)	
	YACCAMOO (AI) (P) PIKX20E (P)		AIRLIE KELLY U219E (AI) (ET) (P) A1SU219E (P)	
<b>Sire: TEMANA GOLDEN LOGIE G66E (P) (R/F) TJG66E (P)</b>		<b>Dam: DSK AC KATRINA F60E (P) DSKF60E (P)</b>		
	MEILLARD RJ OAFR7196F (H)		PALGROVE UPRIGHT PKU212E (H)	
	TEMANA X104 (AI) (ET) TJX104E (D)		MOONGOOL KATRINA 5 (P) DP2Z456E (P)	
	TEMANA LORETTA (P/S) TJL78E (S)		MOONGOOL KATRINA 3 (P) DP2W121E (P)	

Another powerhouse Gold Logie son with top weight for age and a strong muscle pattern while still showing good fat cover. An exciting young bull who has won his class at Sydney Royal and the Charolais National Show this year.

CALVING EASE			June 2016 Australasian Charolais GROUP BREEDPLAN														
	CED	DTRS	GL	BW	200	400	600	MCWT	MILK	SS	DTC		EMA	RIB	RUMP	RBY%	IMF%
EBV	-1.1	0.5	-0.7	0.6	6	12	20	20	6	0.4	12		-	-	-	-	-
Acc	34%	26%	33%	65%	41%	42%	44%	42%	30%	33%	30%		-	-	-	-	-

Traits Observed: BWT

Purchaser:

Price:



### DSK TGL Lamebrain L21E. Stud Sire Potential

<b>Lot 13</b>	<b>DSK TGL KARUMBA K67E (P)</b>	<b>Age: 20</b>	<b>CHAROLAIS</b>	<b>Animal ID: DSKK67E</b>
	<b>Born: 4/12/2014</b>	<b>Group: 1-C</b>	<b>White Polled</b>	<b>Registered</b>
	TEMANA XOROX TJX77E (D)		M6 GRID MAKER 104 PET M633377 (P) OAUW3377E (P)	
	YACCAMOO COWBOY (P) PIKC15E (P)		EC NO DOUBT 2022 P M685500 (P) OAUZ2022E (P)	
	YACCAMOO (AI) (P) PIKX20E (P)		EC LADY DUKE 2022 P (P) PED-2022E (P)	
<b>Sire: TEMANA GOLDEN LOGIE G66E (P) (R/F) TJG66E (P)</b>		<b>Dam: DSK ND FLOSSY E025E (AI) (ET) (P) DSKE25E (P)</b>		
	MEILLARD RJ OAFR7196F (H)		PINNAROO RED RULER (AI) (ET) BAAP89F (H)	
	TEMANA X104 (AI) (ET) TJX104E (D)		PINNAROO RED FAIRY FLOSS R/F BAAS74E (D)	
	TEMANA LORETTA (P/S) TJL78E (S)		PINNAROO NOBLE LADY (AI) BAAN102E	

A young bull with tremendous volume and muscle content and a great disposition. Dam, is a top cow who always looks well and weans a heavy calf every year.

CALVING EASE			June 2016 Australasian Charolais GROUP BREEDPLAN														
	CED	DTRS	GL	BW	200	400	600	MCWT	MILK	SS		CWT	EMA	RIB	RUMP	RBY%	IMF%
EBV	3.9	0.5	-2.5	-0.5	9	21	32	35	12	1.1		21	1.9	0	-0.1	0.4	0.3
Acc	39%	33%	42%	68%	52%	58%	56%	51%	35%	67%		46%	40%	40%	39%	41%	39%

Traits Observed: BWT,400WT,SS,FAT,EMA,IMF

Purchaser:

Price:

<b>Lot 14</b>	<b>DSK TGL KARL K52E (P)</b>	<b>Age: 21</b>	<b>CHAROLAIS</b>	<b>Animal ID: DSKK52E</b>
	<b>Born: 7/11/2014</b>	<b>Group: 1-C</b>	<b>White Polled</b>	<b>Registered</b>
	TEMANA XOROX TJX77E (D)			LT WESTERN EDGE 4057 PLD M686616 (P) OAUZ6616E (P)
	YACCAMOO COWBOY (P) PIKC15E (P)			DSK EDGE IT TO SLIPS E18 (AI) (ET) (P) DSKE18E (P)
	YACCAMOO (AI) (P) PIKX20E (P)			DSK GN JULIETTE U1E (AI) (P) DSU1E (P)
<b>Sire: TEMANA GOLDEN LOGIE G66E (P) (R/F) TJG66E (P)</b>			<b>Dam: DSK E18 ESTELLE G48E (P) DSKG48E (P)</b>	
	MEILLARD RJ OAFR7196F (H)			HARVIE JAGER 65J PMC228759 (P) OACU8759E (P)
	TEMANA X104 (AI) (ET) TJX104E (D)			DSK HJ ESTELLE E55E (AI) (ET) DSKE55E (D)
	TEMANA LORETTA (P/S) TJL78E (S)			PALGROVE ESTELLA 31 (AI) (ET) PKN230E (H)

A powerful strong muscled bull with a good temperament from a top breeder who has turned out another top full brother to K52E this year.

CALVING EASE		June 2016 Australasian Charolais GROUP BREEDPLAN															
	CED	DTRS	GL	BW	200	400	600	MCWT	MILK	SS		CWT	EMA	RIB	RUMP	RBY%	IMF%
EBV	1.6	2.4	-1.5	0.3	11	25	32	32	8	1.3		19	0.9	-0.2	-0.2	0.2	0.3
Acc	35%	27%	39%	66%	50%	56%	53%	48%	29%	66%		43%	38%	38%	37%	40%	37%

Traits Observed: BWT,400WT,SS,FAT,EMA,IMF

Purchaser:

Price:

<b>Lot 15</b>	<b>DSK TGL KONGO K54E</b>	<b>Age: 21</b>	<b>CHAROLAIS</b>	<b>Animal ID: DSKK54E</b>
	<b>Born: 10/11/2014</b>	<b>Group: 1-C</b>	<b>Cream Dehorned</b>	<b>Registered</b>
	TEMANA XOROX TJX77E (D)			LT WESTERN SPUR 2061 PLD M645785 (P) OAUZ2061E (P)
	YACCAMOO COWBOY (P) PIKC15E (P)			LT WESTERN EDGE 4057 PLD M686616 (P) OAUZ6616E (P)
	YACCAMOO (AI) (P) PIKX20E (P)			LT DUCHESS OF MAC 7076 P PED-2993E (H)
<b>Sire: TEMANA GOLDEN LOGIE G66E (P) (R/F) TJG66E (P)</b>			<b>Dam: DSK EDGE ESTELLE F35E (AI) (P) DSKF35E (P)</b>	
	MEILLARD RJ OAFR7196F (H)			AYR HUELVA'S HUSTLER (AI) AYRT100E
	TEMANA X104 (AI) (ET) TJX104E (D)			DSK T100E ESTELLE W8E DSKW8E
	TEMANA LORETTA (P/S) TJL78E (S)			PEARL CHAROLAIS ESTELLA S14E (AI) (ET) KHSS14E (H)

Moderate framed bull with a very strong muscle pattern and finishing ability. Dam, F35, is a wonderful, easy keeping cow with an excellent udder and is a top milker.

CALVING EASE		June 2016 Australasian Charolais GROUP BREEDPLAN															
	CED	DTRS	GL	BW	200	400	600	MCWT	MILK	SS		CWT	EMA	RIB	RUMP	RBY%	IMF%
EBV	2	4.9	-1.4	0.1	4	14	15	12	11	0.1		13	1.4	-0.3	-0.4	0.8	-0.4
Acc	38%	30%	47%	68%	53%	58%	51%	51%	34%	67%		45%	40%	40%	39%	41%	39%

Traits Observed: BWT,400WT,SS,FAT,EMA,IMF

Purchaser:

Price:

<b>Lot 16</b>	<b>DSK PGRM KRUSER K30E (AI) (P)</b>	<b>Age: 23</b>	<b>CHAROLAIS</b>	<b>Animal ID: DSKK30E</b>
	<b>Born: 09/09/2014</b>	<b>Group: 1-C</b>	<b>White Polled</b>	<b>Registered</b>
	LT RIO BLANCO 1234 P (P) OAUW591E (P)			VCR SIR DUKE 914 PLD PED-914E (H)
	SVY PIONEER 402P PED-8416E (D)			JCR SIR DUKE 041 (P) OAUW9856E (P)
	SVY JINGLES 153L PED-3049E			WCR MISS MAC 638 PED-4464E
<b>Sire: SVY PILGRIM PLD 655S (P) OACB3031E (P)</b>			<b>Dam: DSK DK BEATRIX F19E (AI) (P) DSKF19E (P)</b>	
	RGP EUREKA 17E PMC179283 (P) OACQ17E (P)			AYR HUELVA'S HUSTLER (AI) AYRT100E
	HFCC FRENCHKISS 919J PED-9584E			DSK T100 BEATRIX Y18 DSKY18E (H)
	QCR FRENCHKISS 33F PED-8979E			DSK BEATRIX V1 (P) DSKV1E (P)

A typical Pilgrim son with a moderate frame, plenty of muscle and easy keeping. Maternal side going back to our top cow Y18 the same as Lot 11.

CALVING EASE		June 2016 Australasian Charolais GROUP BREEDPLAN															
	CED	DTRS	GL	BW	200	400	600	MCWT	MILK	SS		CWT	EMA	RIB	RUMP	RBY%	IMF%
EBV	0.8	-7.9	-4.1	0.6	19	38	56	43	5	1.8		30	1.9	0.5	0.8	0	0.5
Acc	46%	41%	74%	72%	62%	64%	69%	60%	49%	73%		56%	48%	52%	51%	49%	47%

Traits Observed: GL,BWT

Purchaser:

Price:

<b>Lot 17</b>	<b>DSK MD KLINGER K34E (AI) (R/F)</b>	<b>Age: 23</b>	<b>CHAROLAIS</b>	<b>Animal ID: DSKK34E</b>
	<b>Born: 25/09/2014</b>	<b>Group: SINGLE</b>	<b>Red factor Dehorned</b>	<b>Registered</b>
	EXCALIBUR FMC423 M64617 (AI) IACE6084F			LT WESTERN SPUR 2061 PLD M645785 (P) OAUZ2061E (P)
	COBRABALD EXCALIBUR X101 (AI) ASHX101E (H)			LT WESTERN EDGE 4057 PLD M686616 (P) OAUZ6616E (P)
	COBRABALD SOPHIE (AI) ASHS53E (H)			LT DUCHESS OF MAC 7076 P PED-2993E (H)
<b>Sire: MOONGOOL DERRINGER (R/F) DP2D303E (H)</b>			<b>Dam: DSK EDGE FLOSSY F1E (AI) (ET) (P) DSKF1E (P)</b>	
	TREVLA NIGHTRIDER (AI) WF7N10E (H)			PINNAROO RED RULER (AI) (ET) BAAP89F (H)
	MIXHILL YIN AFFIX (AI) (R/F) MIXY67E (H)			PINNAROO RED FAIRY FLOSS R/F BAAS74E (D)
	MIXHILL U107E (AI) (ET) MIXU107E (D)			PINNAROO NOBLE LADY (AI) BAAN102E

A strong muscled bull with plenty of capacity and with the ability to put plenty of weight into his progeny in a cross breeding program.

CALVING EASE		June 2016 Australasian Charolais GROUP BREEDPLAN															
	CED	DTRS	GL	BW	200	400	600	MCWT	MILK	SS		CWT	EMA	RIB	RUMP	RBY%	IMF%
EBV	0.5	0.1	-1.6	-0.4	10	22	31	31	14	1.1		16	-0.8	0.3	0.4	-1.1	0.4
Acc	42%	33%	70%	71%	60%	62%	69%	59%	41%	72%		58%	50%	51%	50%	50%	52%

Traits Observed: GL,BWT

Purchaser:

Price:

**Lot 18 DSK KG KOPTER K48** Age: **21** ANGUS HBR Animal ID: **NKSK48**  
 Born: 17/11/2014 Group; **3-A** Genetic Status: AMFU, NHFU, CAFU, DD13%

CONNEALY ONWARD USA14216491 CARABAR BANDIT 1407 B49(AI)(ET) QHEB49  
 SITZ UPWARD 307R USA14963730 CARABAR 1407 B49 E76 QHEE76  
 SITZ HENRIETTA PRIDE 81M USA14087650 CARABAR PRINCESS ZENA C9(AI)(ET) QHEC9

**Sire: KANSAS UPWARD G198(AI) NKLG198** **Dam: DSK CBR E76 ISOBYX H94 NKSH94**  
 BON VIEW NEW DESIGN 1407 USA1407 MERRIDALE PACK-N-POWER A46(AI)(ET) CMDA46  
 KANSAS ANNIE Y656(AI)(ET) NKLY656 DSK PNP ISOBYX D153 NKSD153  
 AMAROO EXPO ANNIE U024(AI)(ET) BYEU024 DSK HR ISOBYX V31(AI) NKSV31

A great young sire here with good figures right across the board. G198 is proving to be a real asset with his calving ease, growth and EMA that improve with each calf drop. If you are looking for a complete package, don't miss this one.

CALVING EASE		July 2016 Angus Australia BREEDPLAN															
	CED	DTRS	GL	BW	200	400	600	MCWT	MILK	SS	DTC	CWT	EMA	RIB	RUMP	RBY%	IMF%
EBV	-0.7	-1.7	-2.1	6	55	99	140	121	18	2	-1.7	75	7.4	-2.8	-4	2.5	1.4
Acc	38%	30%	39%	68%	62%	61%	68%	60%	38%	67%	31%	52%	51%	52%	54%	48%	44%

Traits Observed: BWT,600WT,SS,FAT,EMA,IMF

Purchaser:

Price:

**Lot 19 DSK KG KENT K35** Age: **22** ANGUS HBR Animal ID: **NKSK35**  
 Born: 23/10/2014 Group; **3-A** Genetic Status: AMFU, NHFU, CAFU, DDFU

CONNEALY ONWARD USA14216491 REMITALL NIGHTHAWK 37N CAN1171920  
 SITZ UPWARD 307R USA14963730 REMITALL H RACHIS 21R CAN1274555  
 SITZ HENRIETTA PRIDE 81M USA14087650 HENDERSON MISSIE 32'02 CAN1122972

**Sire: KANSAS UPWARD G198(AI) NKLG198** **Dam: DSK RR BENHILDA H61(AI) NKSH61**  
 BON VIEW NEW DESIGN 1407 USA1407 MERRIDALE PACK-N-POWER A46(AI)(ET) CMDA46  
 KANSAS ANNIE Y656(AI)(ET) NKLY656 DSK PNP BENHILDA F100 NKSF100  
 AMAROO EXPO ANNIE U024(AI)(ET) BYEU024 DSK HRW BENHILDA B70(AI) NKSB70

Another good G198 son with top growth figures. A heifers first calf from a strong female line with his dam sired by Rachis. Rachis females are in demand and prized in our herd continually weaning and producing heavy well grown weaners.

CALVING EASE		July 2016 Angus Australia BREEDPLAN															
	CED	DTRS	GL	BW	200	400	600	MCWT	MILK	SS	DTC	CWT	EMA	RIB	RUMP	RBY%	IMF%
EBV	-1.2	-1.6	-2	5.8	52	95	124	106	17	1.6	-3.1	71	6.5	-1.4	-1.9	1.8	1
Acc	38%	30%	50%	70%	62%	61%	68%	60%	40%	67%	30%	52%	51%	52%	54%	48%	45%

Traits Observed: BWT,600WT,SS,FAT,EMA,IMF

Purchaser:

Price:

**Lot 20 DSK JDV KAMPY K34(AI)(ET)** Age: **22** ANGUS HBR Animal ID: **NKSK34**  
 Born: 17/10/2014 Group; **3-A** Genetic Status: AMFU, NHFU, CAFU, DDFU

BON VIEW NEW DESIGN 878 USA878 R R 9440 SCOTCH CAP 1483 USA1483  
 CONNEALY REFLECTION USA14528330 R R FERDINAND 758D USA758D  
 HAPPY GRILL OF CONANGA USA13447172 BLACKCAP OF R R 5367 USA5367

**Sire: JINDRA DOUBLE VISION USA16748826** **Dam: MONTEREY DUTCHESS U3(AI) WGUJ3**  
 HOFF LIMITED EDITION S C 594 USA13119152 WILCO NEPTUNE.(AI)(ET) WLCD42+84  
 HOFF RACHEL 8312 405 USA14806260 KARRIDALE DUTCHESS M14+92 WGJM14+92  
 HOFF MISS EXPO S C 4223 USA13145626 TERANGA HI-BALL H70+88(TW) WTEH70+88

A strong bull here from a top donor matron. Full ET sibling to Lot 3. A big long bodied bull with strong muscling and great skin and hair type. A top performance bull with figures held back by his dam being old genetics and from a non Breedplan recording herd. U3 was selected purely on the fact that she is such a great cow and has proven herself many times over as being a great breeder. U3 is a 1999 born cow and is still sound and about to calve again here at DSK.

CALVING EASE		July 2016 Angus Australia BREEDPLAN															
	CED	DTRS	GL	BW	200	400	600	MCWT	MILK	SS	DTC	CWT	EMA	RIB	RUMP	RBY%	IMF%
EBV	2.3	1.6	-2.6	4	40	80	99	84	12	0.2	-1.1	60	2.9	-0.8	-1.4	0.4	0.6
Acc	44%	33%	59%	70%	64%	63%	65%	59%	47%	64%	35%	53%	53%	53%	53%	49%	47%

Traits Observed: BWT,600WT,SS,FAT,EMA,IMF

Purchaser:

Price:

**Lot 21 DSK KG KANSAS K28** Age: **22** ANGUS HBR Animal ID: **NKSK28**  
 Born: 09/10/2014 Group; **3-A** Genetic Status: AMFU, NHFU, CAFU, DD6%

CONNEALY ONWARD USA14216491 REMITALL NIGHTHAWK 37N CAN1171920  
 SITZ UPWARD 307R USA14963730 REMITALL H RACHIS 21R CAN1274555  
 SITZ HENRIETTA PRIDE 81M USA14087650 HENDERSON MISSIE 32'02 CAN1122972

**Sire: KANSAS UPWARD G198(AI) NKLG198** **Dam: DSK RR HOT STUFF H28(AI) NKSH28**  
 BON VIEW NEW DESIGN 1407 USA1407 AVONLEE WEAPON W13(AI)(ET) BKTW13  
 KANSAS ANNIE Y656(AI)(ET) NKLY656 DSK W13 HOT STUFF B100 NKSB100  
 AMAROO EXPO ANNIE U024(AI)(ET) BYEU024 DSK NT HOT STUFF U5 NKSU5

A good bull displaying lots of commercial attributes. His dam is another Rachis female doing the job for us. The Hot Stuff cow line produced Lot 5 who is a maternal brother to Hot Stuff U5 on the bottom line of the female pedigree here. K28 is correct in his structure with good skin and hair type and good muscling along his top line.

CALVING EASE		July 2016 Angus Australia BREEDPLAN															
	CED	DTRS	GL	BW	200	400	600	MCWT	MILK	SS	DTC	CWT	EMA	RIB	RUMP	RBY%	IMF%
EBV	-0.5	-2	-2.8	4.5	43	77	96	80	16	1.2	-4.5	55	5	0	-0.2	1.1	0.9
Acc	38%	30%	52%	70%	62%	62%	68%	60%	41%	66%	30%	52%	52%	53%	54%	48%	45%

Traits Observed: BWT,600WT,SS,FAT,EMA,IMF

Purchaser:

Price:



**Lot 22** **DSK KG KINKY K45** Age: **21** ANGUS HBR Animal ID: **NKSK45**  
 Born: 04/11/2014 Group: **3-A** Genetic Status: AMFU, NHFU, CAFU, DD25%

CONNEALY ONWARD USA14216491  
 SITZ UPWARD 307R USA14963730  
 SITZ HENRIETTA PRIDE 81M USA14087650

B/R NEW DESIGN 036 USA036  
 P A R B DESIGN PLUS 97 USA97  
 P A R B PRIMROSE 5968 USA5968

Sire: **KANSAS UPWARD G198(AI) NKLG198**

Dam: **DSK DP MARTINA H130(AI)(ET) NKSH130**

BON VIEW NEW DESIGN 1407 USA1407  
 KANSAS ANNIE Y656(AI)(ET) NKLY656  
 AMAROO EXPO ANNIE U024(AI)(ET) BYEU024

S V F HI ROAD USA956  
 ALEX HR MARTINA V5(AI)(ET) DIJVS  
 DSK PP MARTINA R9(AI)(ET) NKSR9

Top G198 son again backed by an extra muscle pedigree with Design Plus and very high maternal with a great old DSK donor V5. She was a Hi Road daughter who produced the top line of 6 Rachis sons that sold to a top of \$17,000 and averaged \$10,000 for us in our 2012 DSK bull sale. A young bull displaying extra depth with good skin and hair. Pedigree should give growth, muscle and high maternal traits for those herds wishing to retain females.

CALVING EASE		July 2016 Angus Australia BREEDPLAN															
	CED	DTRS	GL	BW	200	400	600	MCWT	MILK	SS	DTC	CWT	EMA	RIB	RUMP	RBY%	IMF%
EBV	-1	-2.5	-3.3	5.4	51	92	122	105	16	1.3	-4.2	66	6.8	-1.2	-2	1.7	1.3
Acc	44%	38%	46%	70%	63%	63%	69%	62%	44%	68%	38%	55%	54%	55%	56%	51%	48%

Traits Observed: BWT,600WT,SS,FAT,EMA,IMF

Purchaser:

Price:

**Lot 23** **DSK KG KREMLIN K49** Age: **21** ANGUS HBR Animal ID: **NKSK49**  
 Born: 18/11/2014 Group: **3-A** Genetic Status: AMFU, NHFU, CAFU, DD3%

CONNEALY ONWARD USA14216491  
 SITZ UPWARD 307R USA14963730  
 SITZ HENRIETTA PRIDE 81M USA14087650

TE MANIA MODEST Z793(AI) VTMZ793  
 GILMANDYKE DARBY D0107 EUDD0107  
 NARRANGULLEN EMILLESQUE A294(AI)(ET) NARA294

Sire: **KANSAS UPWARD G198(AI) NKLG198**

Dam: **DSK GDK ISOBYX H18 NKSH18**

BON VIEW NEW DESIGN 1407 USA1407  
 KANSAS ANNIE Y656(AI)(ET) NKLY656  
 AMAROO EXPO ANNIE U024(AI)(ET) BYEU024

DSK HR XTRA X1(AI)(ET) NK SX1  
 DSK X1 ISOBYX D77 NKSD77  
 ALEX W13 ISOBYX Z5 DIJZ5

Highly suitable on heifers by pedigree and type. A very complete well made bull with good muscle. Smooth shoulders and small head for calving ease.

CALVING EASE		July 2016 Angus Australia BREEDPLAN															
	CED	DTRS	GL	BW	200	400	600	MCWT	MILK	SS	DTC	CWT	EMA	RIB	RUMP	RBY%	IMF%
EBV	-0.8	-2.2	-2.8	4.5	45	81	108	95	16	1.6	-4.1	57	4.3	0	-0.2	0.6	1.5
Acc	38%	31%	40%	68%	62%	62%	68%	60%	40%	67%	31%	52%	52%	53%	55%	48%	45%

Traits Observed: BWT,600WT,SS,FAT,EMA,IMF

Purchaser:

Price:

**Lot 24** **DSK SJN KRUPPER K26(APR)(AI)** Age: **23** ANGUS APR Animal ID: **NKSK26**  
 Born: 23/09/2014 Group: **3-A** Genetic Status: AM3%, NH3%, CA5%, DD52%

BON VIEW NEW DESIGN 1407 USA1407  
 SITZ NEW DESIGN 458N USA14474596  
 SITZ ELLUNAS ELITE 3308 USA13028479

REMITALL H RACHIS 21R CAN1274555  
 DSK RR F20 NKSF20  
 ALEX HR MARTINA V5(AI)(ET) DIJVS

Sire: **SITZ JACKSON 431T USA15637146**

Dam: **DSK F20 PANDA H26(APR) NKSH26**

CONNEALY FREIGHTLINER USA7549  
 SITZ EPPIONIA 105P USA14663983  
 SITZ EPPIONIA 120 USA13531403

MERRIDALE PACK-N-POWER A46(AI)(ET) CMDA46  
 DSK PNP PANDA F141 NKSF141  
 DSK ZOO5 PANDA W1(AI) NKSW1

Another good heifer calving prospect. A complete well made bull from our very consistent Panda cow line that has excelled within our herd.

CALVING EASE		July 2016 Angus Australia BREEDPLAN															
	CED	DTRS	GL	BW	200	400	600	MCWT	MILK	SS	DTC	CWT	EMA	RIB	RUMP	RBY%	IMF%
EBV	-0.3	-0.7	-2.7	4	40	78	103	91	15	2.3	-3.4	54	3.5	0.7	1.1	-0.1	1.5
Acc	46%	41%	52%	69%	60%	57%	58%	57%	49%	50%	32%	50%	46%	47%	45%	43%	44%

Traits Observed: BWT,600WT,SS,FAT,EMA,IMF

Purchaser:

Price:

**Lot 25** **DSK TITAN KOKANEE K43(AI)(ET)** Age: **21** ANGUS HBR Animal ID: **NKSK43**  
 Born: 03/11/2014 Group: **3-A** Genetic Status: AMFU, NHFU, CAFU, DDFU

HIGH VALLEY 4C6 AMBUSH USA12240991  
 DMM AMBUSH 03M CAN1134412  
 DMM MISSESENCE 108J CAN985891

PAPA EQUATOR 2928 USA2928  
 COLDSTREAM PARADOX 73N CAN1155260  
 COLDSTREAM BLACKBIRD 53G CAN888521

Sire: **DBRL 03M TITAN 4T CAN1392285**

Dam: **COLDSTREAM LADY HEATHER 92S CAN1345164**

COLDSTREAM BLACKBURN 10L CAN1062035  
 DBRL BLACKBIRD 2N CAN1160168  
 COLDSTREAM BLACKBIRD 7K CAN1014475

COLDSTREAM BONNIE DOON 29H CAN934497  
 COLDSTREAM HEATHER WHYTE 42K CAN1014456  
 COLDSTREAM HEATHER WHYTE 32D CAN807147

An almost total outcross to Australian genetics. A very complete bull that is coming along well now after a tough start with his recipient mother having chronic mastitis and drying off when he was young. His dam, 92S is really delivering for us and this young bull is the oldest of our Canadian embryos.

CALVING EASE		July 2016 Angus Australia BREEDPLAN															
	CED	DTRS	GL	BW	200	400	600	MCWT	MILK	SS	DTC	CWT	EMA	RIB	RUMP	RBY%	IMF%
EBV	-1.7	-	-0.9	5.1	39	68	80	76	8	1.1	-	50	1.2	-1.9	-1.7	1.1	0.6
Acc	31%	-	29%	58%	56%	58%	60%	51%	48%	59%	-	49%	46%	47%	45%	42%	38%

Traits Observed: BWT,600WT,SS,FAT,EMA,IMF

Purchaser:

Price:



<b>Lot 26</b>	<b>DSK KG KEMP K32(TWIN)</b>	Age: <b>22</b>	ANGUS HBR	Animal ID: <b>NKSK32</b>
	Born: 16/10/2014	Group; <b>3-A</b>	Genetic Status: AMFU, NHFU, CAFU, DDFU	
	CONNEALY ONWARD USA14216491		HOFF HI SPADE S C 491 USASC491+	
	SITZ UPWARD 307R USA14963730		S V F HI ROAD USA956	
	SITZ HENRIETTA PRIDE 81M USA14087650		LADY BLACKBIRD 111 G D A R USA111	
<b>Sire: KANSAS UPWARD G198(AI) NKL198</b>			<b>Dam: DSK HR PANDA H8(AI)(ET) NKSH8</b>	
	BON VIEW NEW DESIGN 1407 USA1407		HOFF ULTRA S C 108 USASC108	
	KANSAS ANNIE Y656(AI)(ET) NKLY656		DSK HU PANDA W9(AI)(ET) NKSW9	
	AMAROO EXPO ANNIE U024(AI)(ET) BYEU024		DSK PM PANDA R3 NKSR3	

A young bull douing catchup being a twin on a heifer reared in a tough summer. Pedigree second to none with dam, H8 being a full ET sibling to H7 who sold for \$15,000 as a joined heifer and a class winner at Sydney Royal. Suitable for use on heifers.

CALVING EASE		July 2016 Angus Australia BREEDPLAN															
	CED	DTRS	GL	BW	200	400	600	MCWT	MILK	SS	DTC	CWT	EMA	RIB	RUMP	RBY%	IMF%
EBV	-1.3	-1.6	-2.6	5.2	46	82	110	97	16	1	-3.7	60	5.3	-1.6	-2.3	1.5	1.2
Acc	42%	35%	43%	56%	50%	49%	50%	48%	44%	47%	34%	44%	43%	43%	43%	41%	41%

Traits Observed: BWT,600WT,SS,FAT,EMA,IMF

Purchaser:

Price:

<b>Lot 27</b>	<b>DSK PGRM KOSMO K37E (AI)</b>	Age: <b>23</b>	CHAROLAIS	Animal ID: <b>DSKK37E</b>
	Born: 20/09/2014	Group; <b>2-C</b>	White Dehorned	Registered
	LT RIO BLANCO 1234 P (P) OAUW591E (P)		TREPIDENT OAFK8582F	
	SVY PIONEER 402P PED-8416E		INDIANA OAFN393F	
	SVY JINGLES 153L PED-3049E		TRISTESSE PED-5882F	
<b>Sire: SVY PILGRIM PLD 655S (P) OACB3031E (P)</b>			<b>Dam: DSK INDI FLOSSY G21E (AI) (ET) (R/F) DSKG21E (D)</b>	
	RGP EUREKA 17E PMC179283 (P) OACQ17E (P)		PINNAROO RED RULER (AI) (ET) BAAP89F (H)	
	HFCC FRENCHKISS 919J PED-9584E		PINNAROO RED FAIRY FLOSS R/F BAAS74E (D)	
	QCR FRENCHKISS 33F PED-8979E		PINNAROO NOBLE LADY (AI) BAAN102E	

A thick, powerful herd bull here that will produce powerful heavy weaners with good muscle and fats. From G21 who is an Indiana daughter out of our great Flossy S74 cow who has had a big impact in our herd.

CALVING EASE		June 2016 Australasian Charolais GROUP BREEDPLAN															
	CED	DTRS	GL	BW	200	400	600	MCWT	MILK	SS		CWT	EMA	RIB	RUMP	RBY%	IMF%
EBV	-1.6	-8.7	-5.5	0.2	20	38	51	54	11	0.9		31	2.3	0.3	0.4	0.4	0.2
Acc	48%	45%	72%	71%	63%	65%	70%	61%	52%	73%		57%	49%	54%	53%	51%	48%

Traits Observed: GL,BWT,600WT,SS,FAT,EMA,IMF

Purchaser:

Price:

<b>Lot 28</b>	<b>DSK PJN KLUTZ K26E (AI) (P)</b>	Age: <b>23</b>	CHAROLAIS	Animal ID: <b>DSKK26E</b>
	Born: 01/09/2014	Group; <b>2-C</b>	White Polled	Registered
	EC BRONSON 204 POLLED (P) PED-1938E (P)		SVY PIONEER 402P PED-8416E (D)	
	RDGC KALAMAZOO 387F (P) PED-1257E (P)		SVY PILGRIM PLD 655S (P) OACB3031E (P)	
	MISS RDGC SHEBA 1W PED-2909E (H)		HFCC FRENCHKISS 919J PED-9584E	
<b>Sire: CS PLD JUNCTION 4J MC228742 (P) OACU8742E (P)</b>			<b>Dam: DSK PGM FLOSSY G24E (AI) (ET) (P) (R/F) DSKG24E (P)</b>	
	MNE EXCLUSIVE 17E (P) PED-9343E (P)		PINNAROO RED RULER (AI) (ET) BAAP89F (H)	
	CS EXCLUSIVE'S GUEST 5G PED-2100E (H)		PINNAROO RED FAIRY FLOSS R/F BAAS74E (D)	
	HTA CROCUS PLD 503E (P) PED-915E (P)		PINNAROO NOBLE LADY (AI) BAAN102E	

A real power bull here as his figures indicate. Will surely add tremendous weight whilst maintaining finishing ability. Dam, G24 is a top young breeder with a top udder bred from our great S74 cow again who has bred well for us including a Grand Champion bull at Brisbane. Recommended for use over mature British breed or Bos Indicus females.

CALVING EASE		June 2016 Australasian Charolais GROUP BREEDPLAN															
	CED	DTRS	GL	BW	200	400	600	MCWT	MILK	SS		CWT	EMA	RIB	RUMP	RBY%	IMF%
EBV	-7.1	-4.8	-2.5	0.7	20	40	63	50	12	2.7		36	2.6	-0.1	0.1	1.1	-0.4
Acc	46%	41%	72%	70%	62%	64%	69%	60%	52%	73%		56%	48%	53%	52%	51%	47%

Traits Observed: GL,BWT,600WT,SS,FAT,EMA,IMF

Purchaser:

Price:

<b>Lot 29</b>	<b>DSK MD KATTER K39E (AI) (P) (R/F)</b>	Age: <b>22</b>	CHAROLAIS	Animal ID: <b>DSKK39E</b>
	Born: 02/10/2014	Group; <b>2-C</b>	Red factor Polled	Registered
	EXCALIBUR FMC423 M64617 (AI) IACE6084F		LT UNLIMITED EASE 9108 OAUJ9108E (H)	
	COBRABALD EXCALIBUR X101 (AI) ASHX101E (H)		LT EASY BLEND 5125 PLD (P) OAU5113E (P)	
	COBRABALD SOPHIE (AI) ASH553E (H)		LT BRENDA 1014 PLD PED-4572E	
<b>Sire: MOONGOOL DERRINGER (R/F) DP2D303E (H)</b>			<b>Dam: DSK EASY GINA F39E (AI) (P) DSKF39E (P)</b>	
	TREVLA C NIGHTRIDER (AI) WF7N10E (H)		WATERFORD UNCLE SAM (P) WETU30E (P)	
	MIXHILL YIN AFFIX (AI) (R/F) MIXY67E (H)		NANDILLYAN A57E (P) FA57E (P)	
	MIXHILL U107E (AI) (ET) MIXU107E (D)		NANDILLYAN ZIG 8 FW3E	

A smooth, long red factor polled bull from a real good daughter of our Gina A57 cow, sired by AI sire Derringer who was an impressive bull.

CALVING EASE		June 2016 Australasian Charolais GROUP BREEDPLAN															
	CED	DTRS	GL	BW	200	400	600	MCWT	MILK	SS		CWT	EMA	RIB	RUMP	RBY%	IMF%
EBV	7.4	0.9	-3.2	-1.4	12	21	30	20	6	0.4		17	-0.4	0.3	0.5	-1	0.6
Acc	42%	32%	72%	72%	61%	63%	69%	60%	40%	72%		58%	50%	51%	50%	50%	52%

Traits Observed: GL,BWT,600WT,SS,FAT,EMA,IMF

Purchaser:

Price:





**BORAH BULLS**



**NKSK29 LOT 1**



**NKSK12 LOT 2**



**NKSK31 LOT 3**



**NKSK15 LOT 5**



**NKSL38 LOT 7**



**NKSL35 LOT 8**



**NKSL62 LOT 9**



**NKSL52 LOT 10**



**DSKK56E LOT 11**



**DSKL21E LOT 12**



**DSKK67E LOT 13**



**DSKK52E LOT 14**



**DSKK54E LOT 15**



**DSKK30E LOT 16**





DSKK<sub>34</sub>E LOT 17



NKSK<sub>48</sub> LOT 18



NKSK<sub>35</sub> LOT 19



NKSK<sub>34</sub> LOT 20



NKSK<sub>28</sub> LOT 21



NKSK<sub>45</sub> LOT 22



NKSK<sub>49</sub> LOT 23



NKSK<sub>26</sub> LOT 24



NKSK<sub>43</sub> LOT 25



NKSK<sub>32</sub> LOT 26



DSKK<sub>37</sub>E LOT 27



DSKK<sub>26</sub>E LOT 28



DSKK<sub>39</sub>E LOT 29



DSKK<sub>35</sub>E LOT 30



DSKL<sub>31</sub>E LOT 31





DSKL30E LOT 32



DSKL13E LoT 33



DSKL33E LOT 34



NKSL31 LOT 35



NKSL37 LOT 36



NKSL46 LOT 38



NKSL54 LOT 40



NKSL22 LOT 41



NKSL42 LOT 43



NKSL28 LOT 44



DSKK76E LOT 52



DSKK49E LOT 53



DSKL5E LOT 56



DSKL10E LOT 57



DSKL41E LOT 58





DSKL17E LOT 59



NKSL106 LOT62



NKSL25 LOT 65



NKSL98 LOT 66



NKSL95 LOT 67



NKSL105 LOT 68

NKS L35 Lot 9



DSK L21E Lot 12



NKS K19 Lot 4



<b>Lot 30</b>	<b>DSK LTL KAMPER K35E (AI) (P)</b>	<b>Age: 23</b>	<b>CHAROLAIS</b>	<b>Animal ID: DSKK35E</b>
	<b>Born: 25/09/2014</b>	<b>Group; 2-C</b>	<b>White Polled</b>	<b>Registered</b>
	LT ASSERTION 1277 PEDW1277F (H)		MOONGOOL WINCHESTER DP2W300E (H)	
	LT BLUEGRASS 4017P M686569 (P) OAUZ4017E (P)		MOONGOOL ENCORE (P) DP2E438E (P)	
	LT PEARLS BREEZE 2236 PEDX2236F (H)		TEMANA GLORIA V14 TJV14E	
<b>Sire: LT LEDGER 0332 (P) OAU3168E (P)</b>			<b>Dam: DSK ME WENDY H6E (P) DSKH6E (P)</b>	
	LT RIO BRAVO 3181 P M665507 (P) OAU5507E (P)		LT WYOMING WIND 4020 PLD (P) OAU4020E (P)	
	LT BRENDA 6120 PLD PED-6992E		DSK WW WENDY Z4E (AI) (ET) (P) DSKZ4E (P)	
	LT BRENDA'S EASE 3055 PLD PED-9389E		PINNAROO RED TRENDIE R/F BAAS81E (D)	

A moderate framed, easy keeping bull but still showing that extra Charolais muscling. K35 is a heifers first calf and his dam, H6, will be a prominent breeder in our herd with a top Gold Logie son weaned this year. We used sire, Ledger as our AI Charolais heifer bull.

CALVING EASE			June 2016 Australasian Charolais GROUP BREEDPLAN														
	CED	DTRS	GL	BW	200	400	600	MCWT	MILK	SS		CWT	EMA	RIB	RUMP	RBY%	IMF%
EBV	6.8	-4.2	-4.1	-1.1	15	29	38	31	8	3.7		20	1	1.8	3.1	-1.5	0.9
Acc	44%	36%	71%	69%	61%	63%	68%	58%	40%	72%		55%	48%	51%	50%	50%	47%

Traits Observed: GL,BWT,600WT,SS,FAT,EMA,IMF

Purchaser:

Price:

<b>Lot 31</b>	<b>DSK TGL LOG ON L31E (R/F)</b>	<b>Age: 16</b>	<b>CHAROLAIS</b>	<b>Animal ID: DSKL31E</b>
	<b>Born: 14/04/2015</b>	<b>Group; 3-C</b>	<b>Red factor Dehorned</b>	<b>Registered</b>
	TEMANA XOROX TJX77E (D)		GUNNADOO SUGAR RAY GN1S202E (D)	
	YACCAMOO COWBOY (P) PIKC15E (P)		GUNNADOO YOU LITTLE RIPPER (P) GN1Y142E (P)	
	YACCAMOO (AI) (P) PIKX20E (P)		GUNNADOO LAONIE T29E (P) GN1T29E (P)	
<b>Sire: TEMANA GOLDEN LOGIE G66E (P) (R/F) TJG66E (P)</b>			<b>Dam: DSK GYLR ESTELLE F31E (AI) (P) DSKF31E (P)</b>	
	MEILLARD RJ OAFR7196F (H)		GUNNADOO XCEPTION X23E GN1X23E	
	TEMANA X104 (AI) (ET) TJX104E (D)		DSK GX ESTELLE A31E DSKA31E (H)	
	TEMANA LORETTA (P/S) TJL78E (S)		DSK MP ESTELLA V2 (AI) (ET) (P) DSKV2E (S)	

An absolute top performer here with a good outlook. An active bull with the ability to pass on outstanding weight for age. Maternal grand sire You Little Ripper was a class winner at Brisbane and sold for \$32,000. Recommended for use over mature age females.

CALVING EASE			June 2016 Australasian Charolais GROUP BREEDPLAN														
	CED	DTRS	GL	BW	200	400	600	MCWT	MILK	SS		CWT	EMA	RIB	RUMP	RBY%	IMF%
EBV	-2.8	-1.7	-0.8	2.2	10	20	32	34	3	0.3		18	-	-	-	-	-
Acc	35%	27%	45%	67%	45%	45%	47%	45%	32%	34%		32%	-	-	-	-	-

Traits Observed: BWT,400WT,SS,FAT,EMA,IMF

Purchaser:

Price:

<b>Lot 32</b>	<b>DSK TGL LOGO L30E (P)</b>	<b>Age: 16</b>	<b>CHAROLAIS</b>	<b>Animal ID: DSKL30E</b>
	<b>Born: 18/04/2015</b>	<b>Group; 3-C</b>	<b>White Polled</b>	<b>Registered</b>
	TEMANA XOROX TJX77E (D)		FERNVALE MAGNUM (AI) FENM1E (D)	
	YACCAMOO COWBOY (P) PIKC15E (P)		GUNNADOO QUARTER MASTER Q95E R/F (AI) GN1Q95E (D)	
	YACCAMOO (AI) (P) PIKX20E (P)		GUNNADOO DR STONE L13D (AI) GN1L13D (H)	
<b>Sire: TEMANA GOLDEN LOGIE G66E (P) (R/F) TJG66E (P)</b>			<b>Dam: DSK GQM ESTELLE E68E (AI) DSKE68E (D)</b>	
	MEILLARD RJ OAFR7196F (H)		WCR PRIME CUT 764 PLD PMC223447 (P) OACS764E (P)	
	TEMANA X104 (AI) (ET) TJX104E (D)		DSK PC ESTELLE Y2E (AI) (ET) (P) DSKY2E (P)	
	TEMANA LORETTA (P/S) TJL78E (S)		PALGROVE ESTELLA 31 (AI) (ET) PKN230E (H)	

A young strong, polled bull with lots of bone and a strong top. This bull suits the feeder market over British females.

CALVING EASE			June 2016 Australasian Charolais GROUP BREEDPLAN														
	CED	DTRS	GL	BW	200	400	600	MCWT	MILK	SS	DTC	CWT	EMA	RIB	RUMP	RBY%	IMF%
EBV	4.3	-2.5	-1	0.5	10	20	30	34	4	0.6		19	1.8	-0.5	-0.7	0.7	0.2
Acc	36%	31%	44%	66%	46%	45%	49%	46%	34%	33%		36%	27%	32%	32%	30%	26%

Traits Observed: BWT,400WT,SS,FAT,EMA,IMF

Purchaser:

Price:

<b>Lot 33</b>	<b>DSK TGL LOTABULL L13E (P)(R/F)</b>	<b>Age: 18</b>	<b>CHAROLAIS</b>	<b>Animal ID: DSKL13E</b>
	<b>Born: 02/02/2015</b>	<b>Group; 3-C</b>	<b>Red factor Polled</b>	<b>Registered</b>
	TEMANA XOROX TJX77E (D)		AYR HUELVA'S HUSTLER (AI) AYRT100E	
	YACCAMOO COWBOY (P) PIKC15E (P)		DSK RED EMPEROR Y13E (P) (R/F) DSKY13E (P)	
	YACCAMOO (AI) (P) PIKX20E (P)		DSK GN JULIETTE U1E (AI) (P) DSKU1E (P)	
<b>Sire: TEMANA GOLDEN LOGIE G66E (P) (R/F) TJG66E (P)</b>			<b>Dam: DSK RE WENDY C31E (P) (R/F) DSKC31E (P)</b>	
	MEILLARD RJ OAFR7196F (H)		LT WYOMING WIND 4020 PLD (P) OAU4020E (P)	
	TEMANA X104 (AI) (ET) TJX104E (D)		DSK WW WENDY A10E (AI) (ET) (P) DSKA10E (P)	
	TEMANA LORETTA (P/S) TJL78E (S)		PINNAROO RED TRENDIE R/F BAAS81E (D)	

Another high performance Gold Logie son from our favourite cow, C31, who had a top show career and is breeding very well including a daughter who was Grand Champion at the Charolais Sydney Royal Feature show in 2013. L13 is a dark red polled bull who would suit mature cows and probably produce black calves from Angus cows.

CALVING EASE			June 2016 Australasian Charolais GROUP BREEDPLAN														
	CED	DTRS	GL	BW	200	400	600	MCWT	MILK	SS		CWT	EMA	RIB	RUMP	RBY%	IMF%
EBV	-2.3	-1.8	-0.7	1.3	11	18	25	34	6	0.9		13	1.6	0.6	0.8	-0.1	0.5
Acc	38%	31%	42%	67%	49%	53%	52%	48%	32%	62%		41%	36%	36%	35%	38%	35%

Traits Observed: BWT,400WT,SS,FAT,EMA,IMF

Purchaser:

Price:



<b>Lot 34</b>	<b>DSK ME LIGHT RED LINE L33E (P) (R/F)</b>	Age: <b>16</b>	<b>CHAROLAIS</b>	Animal ID: <b>DSKL33E</b>
	Born: <b>26/04/2015</b>	Group: <b>3-C</b>	<b>Red factor Polled</b>	<b>Registered</b>
	MINNIE VALE SUNDANCE SGSS31E (H)		TREPIDENT OAFX8582F	
	MOONGOOL WINCHESTER DP2W300E (H)		INDIANA OAFN393F	
	MOONGOOL LINDA DP2P25E (H)		TRISTESSE PED-5882F	
<b>Sire: MOONGOOL ENCORE (P) DP2E438E (P)</b>	<b>Dam: DSK INDI FLOSSY G23E (AI) (ET) (R/F) DSKG23E (D)</b>			
STANTON CASTLEWOOD JMDP12E	PINNAROO RED RULER (AI) (ET) BAAP89F (H)			
TEMANA GLORIA V14 TJV14E	PINNAROO RED FAIRY FLOSS R/F BAAS74E (D)			
ALLEDNAW GLORIA AKG4D	PINNAROO NOBLE LADY (AI) BAAN102E			

Plenty of muscle and width in an easy doing red factor polled bull. Dam, G23 is a top young French blood female with a perfect udder. Only a young bull with lots of potential.

CALVING EASE			June 2016 Australasian Charolais GROUP BREEDPLAN														
	CED	DTRS	GL	BW	200	400	600	MCWT	MILK	SS		CWT	EMA	RIB	RUMP	RBY%	IMF%
EBV	1.5	-3.6	-2.2	-0.5	11	27	36	44	11	2.6		26	2.1	-0.5	-0.7	0.9	-0.3
Acc	40%	33%	44%	68%	56%	60%	59%	54%	41%	70%		50%	45%	45%	44%	46%	43%

Traits Observed: BWT,400WT,SS,FAT,EMA,IMF

Purchaser:

Price:

<b>Lot 35</b>	<b>DSK HR LONG ROAD L31(ET)</b>	Age: <b>18</b>	<b>ANGUS</b>	<b>HBR</b>	Animal ID: <b>NKSL31</b>
	Born: <b>16/02/2015</b>	Group: <b>3-A</b>	<b>Genetic Status:</b>		<b>AMFU, NHFU, CAFU, DDFU</b>
	R&J SPADE 1204 USA1204		J R JUICE 2005 USAZ005		
	HOFF HI SPADE S C 491 USASC491+		DSK 2005 QUALITY CONTROL Q24(AI) NKSQ24		
	HOFF MISS SCOTCH CAP 074 USA074		TE MANIA BARWON K201+90(AI)(ET) VTMK201+90		
<b>Sire: S V F HI ROAD USA956</b>	<b>Dam: DSK QC KIWI V100(AI)(ET) NKSQ100</b>				
Q A S TRAVELER 23-4 USA23-4	V D A R NEW TREND 315 USA315				
LADY BLACKBIRD 111 G D A R USA111	FARRER KIWI N1(AI)(ET) NFSN1				
BLACKBIRD LADY 851 G D A R USA851	FARRER KIWI G13(AI) NFSG13+87				

Top sire prospect leading this group of yearling plus bulls. Hi Road has been a standout cow maker for us over the years with his daughters our best producers by far to the point that we have imported Hi Road embryos out of selected USA dams to enable us to continue his legacy into our female herd future. Dam V100 was a very consistent breeder with an excellent udder. A full sibling sold to Pinora stud in 2001 and we then produced this flush. If you are looking for a bull to lift maternal and add some frame and muscle, get into this bull.

July 2016 Angus Australia BREEDPLAN																	
	CED	DTRS	GL	BW	200	400	600	MCWT	MILK	SS	DTC	CWT	EMA	RIB	RUMP	RBY%	IMF%
EBV	0.6	0.6	-3	4.8	45	81	107	108	12	1.4	-4.6	58	2.5	-1.1	-1.2	0.4	1.4
Acc	56%	49%	63%	74%	69%	70%	69%	65%	62%	73%	51%	62%	62%	62%	63%	59%	58%

Traits Observed: BWT,400WT,SS,FAT,EMA,IMF

Purchaser:

Price:

<b>Lot 36</b>	<b>DSK CMT LAZLO L37(AI)(ET)</b>	Age: <b>18</b>	<b>ANGUS</b>	<b>HBR</b>	Animal ID: <b>NKSL37</b>
	Born: <b>20/02/2015</b>	Group: <b>3-A</b>	<b>Genetic Status:</b>		<b>AMFU, NHFU, CAFU, DDFU</b>
	G A R PRECISION 1680 USA1680		HOFF HI SPADE S C 491 USASC491+		
	G A R RETAIL PRODUCT USA13395329		S V F HI ROAD USA956		
	G A R EXT 4927 USA12925987		LADY BLACKBIRD 111 G D A R USA111		
<b>Sire: CONNEALY MENTOR 7374 USA15832714</b>	<b>Dam: ALEX HR MARTINA V5(AI)(ET) DIJ V5</b>				
JAUER 353 TRAVELER 589 27 USA12476755	PACK POWER SCOTCH CAP 889(ET) USA889				
EXECUTA OF CONANGA 939 USA14584130	DSK PP MARTINA R9(AI)(ET) NKSR9				
EXEC OF CONANGA 6940 USA6940	MERRIGRANGE MARTINA H129+88(AI)(ET) VMGH129+88				

L37 has always been an eye catcher in this contemporary Autumn group. He shows style, capacity, good skin and hair, depth of side and good skin and hair from our mighty Hi Road V5 donor. A complete young sire for any beef breeding enterprise. Sire, Mentor is doing the job right also being on the maternal side of Lot 1.

CALVING EASE			July 2016 Angus Australia BREEDPLAN														
	CED	DTRS	GL	BW	200	400	600	MCWT	MILK	SS	DTC	CWT	EMA	RIB	RUMP	RBY%	IMF%
EBV	-0.4	-0.1	-2.9	4.6	44	84	105	97	12	1.3	-4.6	62	6.9	0.2	-0.1	1.2	0.9
Acc	51%	43%	63%	74%	69%	70%	69%	65%	57%	73%	39%	60%	61%	61%	61%	57%	56%

Traits Observed: BWT,400WT,SS,FAT,EMA,IMF

Purchaser:

Price:

<b>Lot 37</b>	<b>DSK RR LOCOMOTION L41(AI)(ET)</b>	Age: <b>18</b>	<b>ANGUS</b>	<b>HBR</b>	Animal ID: <b>NKSL41</b>
	Born: <b>23/02/2015</b>	Group: <b>3-A</b>	<b>Genetic Status:</b>		<b>AMFU, NHFU, CAFU, DDFU</b>
	VERMILION DATELINE 7078 USA7078		O S U 6T6 ULTRA USA11870571		
	REMITALL NIGHTHAWK 37N CAN1171920		HOFF ULTRA S C 108 USASC108		
	DIAMOND D EVERA 073G CAN944010		HOFF MISS NORTHLANDER SC 908 USASC908		
<b>Sire: REMITALL H RACHIS 21R CAN1274555</b>	<b>Dam: DSK HU PANDA W9(AI)(ET) NKSW9</b>				
O G L BATTLE CRY 427 128 USA12215320	PALES NE MAGISTRATE M12+92(AI)(ET) NJUM12+92				
HENDERSON MISSIE 32'02 CAN1122972	DSK PM PANDA R3 NKSR3				
HENDERSON MISIE 2'97 CAN890141	DSK WB PANDA M7+92(AI)(ET) NKSM7+92				

A growthy and stylish Rachis son from our top donor W9. Full ET sibling to Lots 8 and 10. All the qualities of his siblings with extra growth. Should produce top females with his male progeny really suiting the feeder market.

CALVING EASE			July 2016 Angus Australia BREEDPLAN														
	CED	DTRS	GL	BW	200	400	600	MCWT	MILK	SS	DTC	CWT	EMA	RIB	RUMP	RBY%	IMF%
EBV	-1.6	-1.3	-1.3	6.1	43	79	97	99	14	0.7	-2.7	54	0.8	-1.1	-0.6	0.7	0.6
Acc	46%	34%	58%	74%	66%	68%	66%	60%	55%	71%	35%	57%	57%	57%	58%	53%	50%

Traits Observed: BWT,400WT,SS,FAT,EMA,IMF

Purchaser:

Price:



**Lot 38** **DSK RR LARAMIE L46(AI)(ET)** Age: **18** ANGUS HBR Animal ID: **NKSL46**  
 Born: 27/02/2015 Group; **3-A** Genetic Status: AMFU, NHFU, CAFU, DDFU

VERMILION DATELINE 7078 USA7078  
 REMITALL NIGHTHAWK 37N CAN1171920  
 DIAMOND D EVERA 073G CAN944010

**Sire: REMITALL H RACHIS 21R CAN1274555**  
 O G L BATTLE CRY 427 128 USA12215320  
 HENDERSON MISSIE 32'02 CAN1122972  
 HENDERSON MISIE 2'97 CAN890141

 **Dam: COLDSTREAM BLACKBIRD 73Y CAN1606034**  
 DMM AMBUSH 03M CAN1134412  
 DBRL 03M TITAN 4T CAN1392285  
 DBRL BLACKBIRD 2N CAN1160168  
 ANGUS ACRES TEX 16S CAN603624  
 COLDSTREAM BLACKBIRD 53G CAN888521  
 COLDSTREAM BLACKBIRD 63E CAN839187

As you expect from this joining. L46 shows top muscling within his contemporary group. Full ET sibling to Lot 7 and 9. L46 shows moderate frame with a strong muscle pattern which is consistent in this joining.

CALVING EASE			July 2016 Angus Australia BREEDPLAN														
	CED	DTRS	GL	BW	200	400	600	MCWT	MILK	SS	DTC	CWT	EMA	RIB	RUMP	RBY%	IMF%
EBV	-1.7	-1.6	-0.3	5.9	44	79	96	92	12	1.6	-3.8	58	2.1	-1.6	-0.9	0.9	0.5
Acc	38%	27%	48%	72%	64%	66%	63%	56%	52%	68%	25%	54%	54%	54%	53%	49%	46%

Traits Observed: BWT,400WT,SS,FAT,EMA,IMF


Purchaser:

Price:

**Lot 39** **DSK LFW LARCENY L45(AI)(ET)** Age: **18** ANGUS HBR Animal ID: **NKSL45**  
 Born: 26/02/2015 Group; **3-A** Genetic Status: AMFU, NHFU, CAFU, DDFU

TC FREEDOM 104 USA104  
 HF FREE WHEELER 191N CAN1186212  
 DURALTA 14C ECHO 32E(ET) CAN32E

**Sire: LLB FREE WHEELER 268S CAN1339786**  
 MERIT LUCAS 7040 CAN895425  
 LLB NITCHE 637J CAN1040084  
 DOUBLE J NITCHE 73D CAN787225

 **Dam: COLDSTREAM BLACKBIRD 73Y CAN1606034**  
 DMM AMBUSH 03M CAN1134412  
 DBRL 03M TITAN 4T CAN1392285  
 DBRL BLACKBIRD 2N CAN1160168  
 ANGUS ACRES TEX 16S CAN603624  
 COLDSTREAM BLACKBIRD 53G CAN888521  
 COLDSTREAM BLACKBIRD 63E CAN839187

Loads of muscle in this young bull which dam 73Y delivers to all her progeny. Full ET sibling heifer won her class at the 2016 Angus Roundup with 220 head entered.

CALVING EASE			July 2016 Angus Australia BREEDPLAN														
	CED	DTRS	GL	BW	200	400	600	MCWT	MILK	SS	DTC	CWT	EMA	RIB	RUMP	RBY%	IMF%
EBV	-2.2	-	-0.9	5.8	39	64	83	81	5	1.6	-	47	1.7	-1.4	-0.7	0.6	0.5
Acc	27%	-	27%	68%	60%	63%	57%	50%	47%	65%	-	50%	49%	49%	48%	43%	39%

Traits Observed: BWT,400WT,SS,FAT,EMA,IMF

Purchaser:

Price:

**Lot 40** **DSK G6 LAREDO L54** Age: **17** ANGUS HBR Animal ID: **NKSL54**  
 Born: 03/03/2015 Group; **3-A** Genetic Status: AMFU, NHFU, CAFU, DD13%

AVONLEE YORKER Y19 BKTY19  
 COBBADAH CREEK Y19 P.FRED D149 BIQD149  
 BOOROOMOOKA REFRESH R129(AI) NGMR129

**Sire: DSK CCD GERALD G6 NKSG6**  
 PALES NE MAGISTRATE M12(AI)(ET) NJUM12  
 DSK PM PANDA R3 NKSR3  
 DSK WB PANDA M7(AI)(ET) NKSM7

**Dam: DSK YA DANDALOO B73(AI) NKSB73**  
 EDI ANGUS RITO V6(AI) CMFV6  
 DSK V6 YARDARM Y27 NKSY27  
 DSK P6 KIMBERLEY S6 NKSS6  
 DUNOON REAGAN R093(AI)(ET) BHRR093  
 DSK DR DANDLOO Z88(AI) NKSZ88  
 DSK HR DANDALOO X58(AI) NKXS58

A real power bull here with a cross of Panda R3 and Yardarm. Both were powerful individuals and Royal Show Interbreed Champions. Dam B73 has now joined our donor program. Looking for a bull to add some performance and with a proven pedigree, this could be the one.

CALVING EASE				July 2016 Angus Australia BREEDPLAN													
	CED	DTRS	GL	BW	200	400	600	MCWT	MILK	SS	DTC	CWT	EMA	RIB	RUMP	RBY%	IMF%
EBV	-2.8	-0.2	-1.2	6	42	80	98	97	11	0.5	-0.7	60	2	-2	-1.9	0.5	0.7
Acc	35%	26%	50%	65%	59%	61%	58%	52%	37%	66%	28%	49%	49%	49%	51%	45%	40%

Traits Observed: BWT,400WT,SS,FAT,EMA,IMF

Purchaser:

Price:

**Lot 41** **DSK G6 LAMPOON L22** Age: **18** ANGUS HBR Animal ID: **NKSL22**  
 Born: 03/02/2015 Group; **3-A** Genetic Status: AMFU, NHFU, CAFU, DDFU

AVONLEE YORKER Y19 BKTY19  
 COBBADAH CREEK Y19 P.FRED D149 BIQD149  
 BOOROOMOOKA REFRESH R129(AI) NGMR129

**Sire: DSK CCD GERALD G6 NKSG6**  
 PALES NE MAGISTRATE M12(AI)(ET) NJUM12  
 DSK PM PANDA R3 NKSR3  
 DSK WB PANDA M7(AI)(ET) NKSM7

**Dam: ALEX Z005 PANDA B120(AI) DIJB120**  
 CANDOLIER FOREVER 376 USA7501542  
 J R JUICE 2005 USAZ005  
 MG'S BLACK DIAMOND CAN5504  
 G V POWER DRIVE 7369 USA7369  
 ALEX PD PANDA V2(AI)(ET) DIJV2  
 TE MANIA PANDA E12. VTME12+85

Moderate frame with loads of capacity, a strong head and good skin and hair type. Dam, B120 is a moderate framed, excellent uddered female who has produced consistently and so has now joined our embryo donor program. Grand dam Panda V2 was the mother of DSK Cliffy who was Grand Champion at Sydney and Canberra Royal shows and topped our 2009 DSK bull sale.

CALVING EASE				July 2016 Angus Australia BREEDPLAN													
	CED	DTRS	GL	BW	200	400	600	MCWT	MILK	SS	DTC	CWT	EMA	RIB	RUMP	RBY%	IMF%
EBV	-0.5	-1.4	-2.8	5.2	39	70	88	87	12	1.5	-1.3	49	1.5	-0.5	0.5	-0.3	0.5
Acc	40%	33%	44%	69%	62%	64%	62%	56%	43%	68%	35%	53%	53%	53%	55%	50%	46%

Traits Observed: BWT,400WT,SS,FAT,EMA,IMF

Purchaser:

Price:

<b>Lot 42</b>	<b>DSK G6 LAY LO L8</b>	Age: <b>19</b>	ANGUS	HBR	<b>Animal ID: NKSL8</b>
	Born: 20/01/2015	Group; <b>3-A</b>	<b>Genetic Status:</b>	AMFU, NHFU, CAF, RDC, DDFU	
	AVONLEE YORKER Y19 BKTY19				REMITALL NIGHTHAWK 37N CAN1171920
	COBBADAH CREEK Y19 P.FRED D149 BIQD149				REMITALL H RACHIS 21R CAN1274555
	BOOROOMOOKA REFRESH R129(AI) NGMR129				HENDERSON MISSIE 32'02 CAN1122972
<b>Sire: DSK CCD GERALD G6 NKSG6</b>	PALES NE MAGISTRATE M12(AI)(ET) NJUM12		<b>Dam: DSK RR GISELLE F35(AI)(ET) NKSF35</b>		HOFF ULTRA S C 108 USASC108
	DSK PM PANDA R3 NKSR3				PALES HU GISELLE X37(AI) NJUX37
	DSK WB PANDA M7(AI)(ET) NKSM7				WILLSBRO GISELLE R10(APR)(AI) NWIR10

Top bull in the making being the heaviest at weaning which seems to be consistent with Rachis females. L8 displays depth of side, width of frame, strong muscling and a very strong sires head. A performance pedigree that is well above what his EBV's indicate.

CALVING EASE				July 2016 Angus Australia BREEDPLAN													
	CED	DTRS	GL	BW	200	400	600	MCWT	MILK	SS	DTC	CWT	EMA	RIB	RUMP	RBY%	IMF%
EBV	-0.7	-1.5	-2	5.6	41	78	94	92	13	1.4	-1.7	58	2.6	-1.8	-1.6	1	0.6
Acc	35%	26%	42%	68%	61%	63%	61%	55%	39%	67%	28%	51%	52%	52%	54%	47%	44%

Traits Observed: 400WT,SS,FAT,EMA,IMF

Purchaser:

Price:

<b>Lot 43</b>	<b>DSK HR LINK ROAD L42(AI)(ET)</b>	Age: <b>18</b>	ANGUS	HBR	<b>Animal ID: NKSL42</b>
	Born: 23/02/2015	Group; <b>3-A</b>	<b>Genetic Status:</b>	AMFU, NHFU, CAFU, DDFU	
	R&J SPADE 1204 USA1204				J R JUICE 2005 USA2005
	HOFF HI SPADE S C 491 USASC491+				DSK 2005 QUALITY CONTROL Q24(AI) NKSQ24
	HOFF MISS SCOTCH CAP 074 USA074				TE MANIA BARWON K201+90(AI)(ET) VTMK201+90
<b>Sire: S V F HI ROAD USA956</b>	Q A S TRAVELER 23-4 USA23-4		<b>Dam: DSK QC KIWI V100(AI)(ET) NKSV100</b>		V D A R NEW TREND 315 USA315
	LADY BLACKBIRD 111 G D A R USA111				FARRER KIWI N1(AI)(ET) NFSN1
	BLACKBIRD LADY 851 G D A R USA851				FARRER KIWI G13(AI) NFSG13+87

A very solid pedigree high in maternal with dam being a quality cow with a top udder. Full ET sibling to Lot 35.

CALVING EASE			July 2016 Angus Australia BREEDPLAN														
	CED	DTRS	GL	BW	200	400	600	MCWT	MILK	SS	DTC	CWT	EMA	RIB	RUMP	RBY%	IMF%
EBV	0.6	0.6	-3.2	4.5	42	73	97	99	11	0.4	-4.7	51	1.4	-0.4	-0.3	-0.3	1.6
Acc	56%	49%	63%	74%	69%	70%	69%	65%	62%	73%	51%	62%	62%	62%	63%	59%	58%

Traits Observed: BWT,400WT,SS,FAT,EMA,IMF

Purchaser:

Price:

<b>Lot 44</b>	<b>DSK G2 LEVER L28</b>	Age: <b>18</b>	ANGUS	HBR	<b>Animal ID: NKSL28</b>
	Born: 14/02/2015	Group; <b>3-A</b>	<b>Genetic Status:</b>	AMFU, NHFU, CAFU, DDFU	
	PACK POWER SCOTCH CAP 889(ET) USA889				HOFF HI FLYER S C 7134 USA7134
	MERRIDALE PACK-N-POWER A46(AI)(ET) CMDA46				SUMMITCREST HI FLYER 3B18 USA3B18
	MERRIDALE MILDRED S16(AI)(ET) CMD516				SUMMITCREST LASS 229Y USA229Y
<b>Sire: DSK BN GEORGE G2(AI) NKSG2</b>	HOFF ULTRA S C 108 USASC108		<b>Dam: DSK SH PANDA A62(AI) NKSA62</b>		PALES PI RIGHT ON TARGET R88(AI)(ET) NJUR88
	DSK HU PANDA W9(AI)(ET) NKSW9				DSK PRT PANDA U72 NKSU72
	DSK PM PANDA R3 NKSR3				DSK WB PANDA M9+92(AI)(ET)(TW) NKSM9+92

A growthy young bull with a lot of sire appeal and being a double cross of our Panda cow line. This bull will develop into a top sire with great outlook.

CALVING EASE				July 2016 Angus Australia BREEDPLAN													
	CED	DTRS	GL	BW	200	400	600	MCWT	MILK	SS	DTC	CWT	EMA	RIB	RUMP	RBY%	IMF%
EBV	0.7	-1.3	-1	4.7	38	75	95	93	12	1.5	0.5	57	1.7	-2.3	-2.1	0.7	0.8
Acc	41%	33%	58%	70%	62%	65%	62%	56%	47%	69%	36%	53%	54%	54%	56%	50%	46%

Traits Observed: BWT,400WT,SS,FAT,EMA,IMF

Purchaser:

Price:

<b>Lot 45</b>	<b>DSK G6 LENNY L1</b>	Age: <b>19</b>	ANGUS	HBR	<b>Animal ID: NKSL1</b>
	Born: 03/01/2015	Group; <b>3-A</b>	<b>Genetic Status:</b>	AMFU, NHFU, CAFU, DDFU	
	AVONLEE YORKER Y19 BKTY19				TE MANIA MODEST Z793(AI) VTMZ793
	COBBADAH CREEK Y19 P.FRED D149 BIQD149				GILMANDYKE DARBY D0107 EUDD0107
	BOOROOMOOKA REFRESH R129(AI) NGMR129				NARRANGULLEN EMILLESQUE A294(AI)(ET) NARA294
<b>Sire: DSK CCD GERALD G6 NKSG6</b>	PALES NE MAGISTRATE M12(AI)(ET) NJUM12		<b>Dam: DSK GDK POWER G56 NKSG56</b>		BALDRIDGE NEBRASKA 901 USA13412671
	DSK PM PANDA R3 NKSR3				DSK B.NEB POWER D50(AI) NKSD50
	DSK WB PANDA M7(AI)(ET) NKSM7				DSK U72 POWER X20(TW) NKX20

A bull we like due to the extra dimension throughout. A complete young sire with a strong head. These Darby females are really doing a job for us and we value them highly in our program.

CALVING EASE			July 2016 Angus Australia BREEDPLAN														
	CED	DTRS	GL	BW	200	400	600	MCWT	MILK	SS	DTC	CWT	EMA	RIB	RUMP	RBY%	IMF%
EBV	-2.5	-1.6	-1.2	5.9	40	74	99	100	9	2.2	-2.5	54	1.3	-1.4	-0.8	0.4	0.7
Acc	35%	27%	40%	69%	61%	63%	60%	54%	38%	67%	28%	50%	51%	50%	52%	46%	42%

Traits Observed: 400WT,SS,FAT,EMA,IMF

Purchaser:

Price:

**Lot 46** **DSK G6 LIFER L7** Age: **19** ANGUS HBR **Animal ID: NKSL7**  
 Born: 27/01/2015 Group: **3-A** **Genetic Status:** AMFU, NHFU, CAFU, DDFU

AVONLEE YORKER Y19 BKTY19  
 COBBADAH CREEK Y19 P.FRED D149 BIQD149  
 BOOROOMOOKA REFRESH R129(AI) NGMR129

**Sire: DSK CCD GERALD G6 NKSG6**  
 PALES NE MAGISTRATE M12(AI)(ET) NJUM12  
 DSK PM PANDA R3 NKSR3  
 DSK WB PANDA M7(AI)(ET) NKSM7

TE MANIA MODEST Z793(AI) VTMZ793  
 GILMANDYKE DARBY D0107 EUDD0107  
 NARRANGULLEN EMILLESQUE A294(AI)(ET) NARA294

**Dam: DSK GDK POLLY G33 NKSG33**  
 MERRIDALE PACK-N-POWER A46(AI)(ET) CMDA46  
 DSK PNP POLLY E153 NKSE153  
 DSK FB POLLY U22(AI) NKSU22

Similar in style to the previous lot and from another Darby daughter. Great grand dam, U22 was a favourite being a consistent breeders with a good udder and teats.

CALVING EASE		July 2016 Angus Australia BREEDPLAN															
	CED	DTRS	GL	BW	200	400	600	MCWT	MILK	SS	DTC	CWT	EMA	RIB	RUMP	RBY%	IMF%
EBV	-2.1	-1.8	-1.8	5.4	39	72	93	93	12	2.2	-2.8	53	1.4	-0.2	0.8	-0.1	0.7
Acc	35%	26%	40%	68%	60%	62%	59%	54%	38%	67%	27%	50%	50%	49%	52%	45%	41%

Traits Observed: BWT,400WT,SS,FAT,EMA,IMF

Purchaser:

Price:

**Lot 47** **DSK G2 LONDON L94** Age: **17** ANGUS HBR **Animal ID: NKSL94**  
 Born: 11/03/2015 Group: **3-A** **Genetic Status:** AMFU, NHFU, CAFU, DDFU

PACK POWER SCOTCH CAP 889(ET) USA889  
 MERRIDALE PACK-N-POWER A46(AI)(ET) CMDA46  
 MERRIDALE MILDRED S16(AI)(ET) CMDS16

**Sire: DSK BN GEORGE G2(AI) NKSG2**  
 HOFF ULTRA S C 108 USASC108  
 DSK HU PANDA W9(AI)(ET) NKSW9  
 DSK PM PANDA R3 NKSR3

SUMMITCREST SCOTCH CAP OB45 USAOB45  
 GARDENS HIGHMARK USA13047487  
 GREEN GARDEN PRIDE 6128 S1 USA6128

**Dam: DSK GHM KERRY C88(AI) NKSC88**  
 DSK HR XTRA X1(AI)(ET) NK SX1  
 DSK X1 KERRY A91 NKSA91  
 DSK AT KERRY V65(AI) NKSV65

Young bull displaying the length of body which you need to increase weight and yield. L94 has a great outlook and good skin and hair. Dam, C88 is a moderate cow who has bred consistently and very well every year in our program.

CALVING EASE		July 2016 Angus Australia BREEDPLAN															
	CED	DTRS	GL	BW	200	400	600	MCWT	MILK	SS	DTC	CWT	EMA	RIB	RUMP	RBY%	IMF%
EBV	-0.8	-2.1	-1.2	5.5	41	80	104	98	14	2.5	-2.8	56	2.4	-0.4	0.7	0.2	1.5
Acc	41%	34%	57%	59%	59%	63%	60%	53%	44%	68%	36%	52%	53%	54%	56%	50%	47%

Traits Observed: 400WT,SS,FAT,EMA,IMF

Purchaser:

Price:

**Lot 48** **DSK G6 LICORICE L23** Age: **18** ANGUS HBR **Animal ID: NKSL23**  
 Born: 13/02/2015 Group: **3-A** **Genetic Status:** AMFU, NHFU, CAFU, DDFU

AVONLEE YORKER Y19 BKTY19  
 COBBADAH CREEK Y19 P.FRED D149 BIQD149  
 BOOROOMOOKA REFRESH R129(AI) NGMR129

**Sire: DSK CCD GERALD G6 NKSG6**  
 PALES NE MAGISTRATE M12(AI)(ET) NJUM12  
 DSK PM PANDA R3 NKSR3  
 DSK WB PANDA M7(AI)(ET) NKSM7

MERRIDALE PACK-N-POWER A46(AI)(ET) CMDA46  
 DSK PNP D150 NKSD150  
 PALES U72 ERINETTE X52 NJUX52

**Dam: DSK D150 DANDALOO G52 NKSG52**  
 DSK HR XTRA X1(AI)(ET) NK SX1  
 DSK X1 DANDALOO D101 D104 NKSD104  
 DSK V6 DANDALOO Y46 NKSY46

Another young Gerald bull showing capacity and depth with muscle and a strong head. L23 should add weight and bone to his progeny that will suit a wide range of markets.

CALVING EASE		July 2016 Angus Australia BREEDPLAN															
	CED	DTRS	GL	BW	200	400	600	MCWT	MILK	SS	DTC	CWT	EMA	RIB	RUMP	RBY%	IMF%
EBV	-1.6	-	-2.1	5.7	40	77	97	97	9	0.3	-1.1	55	2	-0.6	0.1	-0.3	0.9
Acc	33%	-	34%	57%	57%	61%	57%	50%	37%	67%	27%	49%	50%	49%	52%	45%	41%

Traits Observed: 400WT,SS,FAT,EMA,IMF

Purchaser:

Price:

**Lot 49** **DSK LFW LOFTY L60(AI)(ET)** Age: **16** ANGUS HBR **Animal ID: NKSL60**  
 Born: 01/04/2015 Group: **3-A** **Genetic Status:** AMFU, NHFU, CAFU, DDFU

TC FREEDOM 104 USA104  
 HF FREE WHEELER 191N CAN1186212  
 DURALTA 14C ECHO 32E(ET) CAN32E

**Sire: LLB FREE WHEELER 268S CAN1339786**  
 MERIT LUCAS 7040 CAN895425  
 LLB NITCHE 637J CAN1040084  
 DOUBLE J NITCHE 73D CAN787225

DMM AMBUSH 03M CAN1134412  
 DBRL 03M TITAN 4T CAN1392285  
 DBRL BLACKBIRD 2N CAN1160168

**Dam: COLDSTREAM BLACKBIRD 73Y CAN1606034**  
 ANGUS ACRES TEX 16S CAN603624  
 COLDSTREAM BLACKBIRD 53G CAN888521  
 COLDSTREAM BLACKBIRD 63E CAN839187



Younger bull in the draft and a full brother to Lot 39. A moderate framed bull with correct structure and a strong muscle pattern that we have come to expect from our Canadian donor 73Y.

CALVING EASE		July 2016 Angus Australia BREEDPLAN															
	CED	DTRS	GL	BW	200	400	600	MCWT	MILK	SS	DTC	CWT	EMA	RIB	RUMP	RBY%	IMF%
EBV	-2.7	-2.1	-0.1	6.1	42	72	89	87	11	0.9	-3.8	53	1.9	-1.2	-0.4	0.7	0.4
Acc	38%	27%	48%	72%	64%	66%	63%	56%	52%	68%	25%	54%	54%	54%	53%	49%	46%

Traits Observed: BWT,400WT,SS,FAT,EMA,IMF

Purchaser:

Price:

**Lot 50****DSK SJ G6 LEAD ON L96**

Born: 14/03/2015

Age: 17

Group: 3-A

ANGUS

HBR

Animal ID: NKSL96

Genetic Status: AMFU, NHFU, CAFU, DDFU

Account B &amp; S Johnson

AVONLEE YORKER Y19 BKY19

COBBADAH CREEK Y19 P.FRED D149 BIQD149

BOOROOMOOKA REFRESH R129(AI) NGMR129

Sire: DSK CCD GERALD G6 NKSG6

PALES NE MAGISTRATE M12+92(AI)(ET) NJUM12+92

DSK PM PANDA R3 NKSR3

DSK WB PANDA M7+92(AI)(ET) NKSM7+92

PACK POWER SCOTCH CAP 889(ET) USA889

MERRIDALE PACK-N-POWER A46(AI)(ET) CMDA46

MERRIDALE MILDRED S16(AI)(ET) CMD516

Dam: DSK PNP AMBUSH G144 NKSG144

DSK HLE ATOMIC BIG EARS A99(AI)(ET) NKSA99

DSK ABE AMBUSH C63 SJ C63(AI) NKSC63

MERRIC RIVERS AMBUSH V100(AI)(ET) NXJV100

A long bodied bull with good skin and hair type. A young bull that will develop into a good sire and produce progeny to suit all markets.

CALVING EASE			July 2016 Angus Australia BREEDPLAN														
	CED	DTRS	GL	BW	200	400	600	MCWT	MILK	SS	DTC	CWT	EMA	RIB	RUMP	RBY%	IMF%
EBV	-1.8	-1.1	-2	6.1	40	78	97	97	11	1.4	-0.3	57	2.1	-1.8	-1.2	0.6	0.7
Acc	36%	28%	40%	58%	58%	61%	58%	51%	40%	67%	29%	50%	51%	49%	52%	46%	42%

Traits Observed: 400WT,SS,FAT,EMA,IMF

Purchaser:

Price:

**Lot 51****DSK TGL KETCHUP K59E (R/F)**

Born: 21/11/2014

Age: 21

Group: 2-C

CHAROLAIS

Animal ID: DSKK59E

Red factor Dehorned Registered

TEMANA XOROX TJX77E (D)

YACCAMOO COWBOY (P) PIKC15E (P)

YACCAMOO (AI) (P) PIKX20E (P)

Sire: TEMANA GOLDEN LOGIE G66E (P) (R/F) TJG66E (P)

MEILLARD RJ OAFR7196F (H)

TEMANA X104 (AI) (ET) TJX104E (D)

TEMANA LORETTA (P/S) TJL78E (S)

HARVIE JAGER 65J PMC228759 (P) OACU8759E (P)

DSK HJ EXPECT NO BETTER E38E (AI) (ET) (P) (R/F) DSKE38E (P)

DSK WW ESTELLE Z6E (AI) (ET) (P) DSKZ6E (P)

Dam: DSK HJ JULIETTE G45E (P) (R/F) DSKG45E (P)

LT WYOMING WIND 4020 PLD (P) OAPU4020E (P)

DSK WW JULIETTE B10E (AI) (ET) (P) DSKB10E (P)

DSK GN JULIETTE U1E (AI) (P) DSKU1E (P)

A dark red bull with a good skin and heavy muscling ideal over mature Angus females with a big percentage of calves should be black.

July 2016 Australasian Charolais GROUP BREEDPLAN																		
CALVING EASE		CED	DTRS	GL	BW	200	400	600	MCWT	MILK	SS		CWT	EMA	RIB	RUMP	RBY%	IMF%
EBV		0	-0.6	1.1	1.1	14	27	37	34	5	1.4		22	2.2	-0.1	0.1	0.8	-0.1
Acc		36%	28%	41%	69%	52%	55%	63%	53%	31%	67%		47%	39%	40%	38%	40%	38%

Traits Observed: BWT,600WT,SS,FAT,EMA,IMF

Purchaser:

Price:

**Lot 52****DSK ME KARACHI K76E (P) (R/F)**

Born: 26/12/2014

Age: 20

Group: 2-C

CHAROLAIS

Animal ID: DSKK76E

Red factor Polled Registered

MINNIE VALE SUNDANCE SGSS31E (H)

MOONGOOL WINCHESTER DP2W300E (H)

MOONGOOL LINDA DP2P25E (H)

Sire: MOONGOOL ENCORE (P) DP2E438E (P)

STANTON CASTLEWOOD JMDP12E

TEMANA GLORIA V14 TJV14E

ALLEDNAW GLORIA AKG4D

LANG'S ERIC THE RED 3E (P/S) PED-8117E (S)

HARVIE JAGER 65J PMC228759 (P) OACU8759E (P)

HARVIE MISS FRANCIS 47F FC234929 OACR4929E (D)

Dam: DSK HJ ESTELLE E004E (AI) (ET) (P) (R/F) DSKE4E (P)

LT WYOMING WIND 4020 PLD (P) OAPU4020E (P)

DSK WW ESTELLE Z6E (AI) (ET) (P) DSKZ6E (P)

PALGROVE ESTELLA 31 (AI) (ET) PKN230E (H)

Plenty of frame, growth and muscle in this strong pedigree'd young December born bull. Dam, E4 is a stretchy, red factor polled female who is a full ET sister to Expect No Better who was our top price bull at our 2011 sale and was a top performer in the Charolais bin trial topping the weaning weight.

CALVING EASE			June 2016 Australasian Charolais GROUP BREEDPLAN														
	CED	DTRS	GL	BW	200	400	600	MCWT	MILK	SS		CWT	EMA	RIB	RUMP	RBY%	IMF%
EBV	-4.7	-7.3	-1.2	1.3	10	26	31	29	5	3		16	0.2	0.2	0.8	-0.4	0.3
Acc	40%	33%	45%	71%	58%	60%	66%	58%	40%	70%		53%	45%	48%	47%	48%	44%

Traits Observed: BWT,600WT,SS,FAT,EMA,IMF

Purchaser:

Price:

**Lot 53****DSK BD KAIZER K49E**

Born: 02/11/2014

Age: 21

Group: 2-C

CHAROLAIS

Animal ID: DSKK49E

White Dehorned Registered

SCHURRTOP 5627 PED-5627E (H)

LT WYOMING WIND 4020 PLD (P) OAPU4020E (P)

LT CHAP'S LADY 217 OP PED-2170E (H)

Sire: BAROOLA D989E (AI) (ET) (P) NCFD989E (P)

PALGROVE METRIC PKM62E (H)

BAROOLA KARLA 2 NCFR2E (D)

BAROOLA KARLA NCFK1F (D)

SVY FREEDOM PLD 307N PMC280878 (P) OACY2808E (P)

GERRARD MONTEZUMA 6T (P) OACC3106E (P)

GERRARD ROXANNE 18P PED-4620E

Dam: DSK MTZ BEATRIX H34E (AI) (P) DSKH34E (P)

MOONGOOL YOKEL DP2Y218E (H)

DSK M.Y. BEATRIX D58E DSKD58E (D)

DSK BEATRIX V1 (P) DSKV1E (P)

A powerful strong muscled sire being a heifers first calf. Dam, H34 is a young female with plenty of capacity and volume with a strong muscle pattern. A strong female line going back to V1 who produced very well.

CALVING EASE			June 2016 Australasian Charolais GROUP BREEDPLAN														
	CED	DTRS	GL	BW	200	400	600	MCWT	MILK	SS		CWT	EMA	RIB	RUMP	RBY%	IMF%
EBV	-2.5	-5.8	-3.8	0.9	13	21	26	24	2	2.2		13	1.3	1.4	2	-0.6	0.3
Acc	39%	34%	45%	68%	56%	58%	65%	56%	39%	69%		52%	45%	47%	45%	46%	45%

Traits Observed: BWT,600WT,SS,FAT,EMA,IMF

Purchaser:

Price:



<b>Lot 54</b>	<b>DSK BD KIT KAT K66E</b>	Age: <b>20</b>	<b>CHAROLAIS</b>	Animal ID: <b>DSKK66E</b>
	Born: <b>03/12/2014</b>	Group; <b>2-C</b>	<b>White Dehorned</b>	<b>Registered</b>
	SCHURRTOP 5627 PED-5627E (H)		MOONGOOL WINCHESTER DP2W300E (H)	
	LT WYOMING WIND 4020 PLD (P) OAUP4020E (P)		MOONGOOL ENCORE (P) DP2E438E (P)	
	LT CHAP'S LADY 217 OP PED-2170E (H)		TEMANA GLORIA V14 TJV14E	
<b>Sire: BAROOLA D989E (AI) (ET) (P) NCFD989E (P)</b>			<b>Dam: DSK ME BEATRIX H78E DSKH78E (D)</b>	
	PALGROVE METRIC PKM62E (H)		GUNNADOO XCEPTION X23E GN1X23E	
	BAROOLA KARLA 2 NCFR2E (D)		DSK GX BEATRIX A340E (P) (TW) DSKA340E (P)	
	BAROOLA KARLA NCFK1F (D)		DSK BEATRIX V1 (P) DSKV1E (P)	

A strong topped young sire with great length. Once again, like lot 53, going back to the top matron V1.

CALVING EASE		June 2016 Australasian Charolais GROUP BREEDPLAN															
	CED	DTRS	GL	BW	200	400	600	MCWT	MILK	SS		CWT	EMA	RIB	RUMP	RBY%	IMF%
EBV	4.1	-3.1	-2.4	-0.3	9	18	20	13	5	2.1		15	1.9	0.3	0.6	0.1	0.4
Acc	38%	33%	41%	67%	55%	58%	64%	55%	38%	69%		51%	44%	45%	44%	46%	43%

Traits Observed: BWT,600WT,SS,FAT,EMA,IMF

Purchaser:

Price:

<b>Lot 55</b>	<b>DSK LTL KLAM K27E (AI) (P)</b>	Age: <b>23</b>	<b>CHAROLAIS</b>	Animal ID: <b>DSKK27E</b>
	Born: <b>03/09/2014</b>	Group; <b>2-C</b>	<b>White Polled</b>	<b>Registered</b>
	LT ASSERTION 1277 PEDW1277F (H)		HARVIE JAGER 65J PMC228759 (P) OACU8759E (P)	
	LT BLUEGRASS 4017P M686569 (P) OAUZ4017E (P)		DSK HJ EXPRESS E75E (AI) (ET) (P) DSKE75E (P)	
	LT PEARLS BREEZE 2236 PEDX2236F (H)		PALGROVE ESTELLA 31 (AI) (ET) PKN230E (H)	
<b>Sire: LT LEDGER 0332 (P) OAU3168E (P)</b>			<b>Dam: DSK EXP GINA H40E (P) (R/F) DSKH40E (P)</b>	
	LT RIO BRAVO 3181 P M665507 (P) OAU5507E (P)		WATERFORD UNCLE SAM (P) WETU30E (P)	
	LT BRENDA 6120 PLD PED-6992E		NANDILLYAN A57E (P) FA57E (P)	
	LT BRENDA'S EASE 3055 PLD PED-9389E		NANDILLYAN ZIG 8 FW3E	

A correct made, well muscled, good skin and hair, and easy doing smaller framed bull who is a heifers first calf. Dam, H40, was a standout heifer and strong milker from our top donor dam, A57.

CALVING EASE		June 2016 Australasian Charolais GROUP BREEDPLAN															
	CED	DTRS	GL	BW	200	400	600	MCWT	MILK	SS	DTC	CWT	EMA	RIB	RUMP	RBY%	IMF%
EBV	7.9	1.7	-1.4	-1.4	10	20	26	12	9	1.6		15	1.1	0.8	1.5	-0.8	1
Acc	43%	34%	70%	67%	55%	54%	54%	50%	40%	49%		44%	36%	40%	40%	38%	36%

Traits Observed: GL,BWT,600WT,SS,FAT,EMA,IMF

Purchaser:

Price:

<b>Lot 56</b>	<b>DSK BD LOCO L5E (P)</b>	Age: <b>19</b>	<b>CHAROLAIS</b>	Animal ID: <b>DSKL5E</b>
	Born: <b>26/01/2015</b>	Group; <b>2-C</b>	<b>White Polled</b>	<b>Registered</b>
	SCHURRTOP 5627 PED-5627E (H)		TREPIDENT OAFX8582F	
	LT WYOMING WIND 4020 PLD (P) OAUP4020E (P)		INDIANA OAFN393F	
	LT CHAP'S LADY 217 OP PED-2170E (H)		TRISTESSE PED-5882F	
<b>Sire: BAROOLA D989E (AI) (ET) (P) NCFD989E (P)</b>			<b>Dam: DSK INDY ESTELLE Z12E (AI) DSKZ12E (H)</b>	
	PALGROVE METRIC PKM62E (H)		BCJ PETER PATRIATION 5P IACB6077E (H)	
	BAROOLA KARLA 2 NCFR2E (D)		PALGROVE ESTELLA 31 (AI) (ET) PKN230E (H)	
	BAROOLA KARLA NCFK1F (D)		PALGROVE ESTELLA 7 PKE101D (H)	

Dam, Z12, joined our ET program as a donor to produce high performance and easy finishing in our herd. Z12 was the dam of our lead steer in our Orange National Steer Trial top weight gain winner on grass and grain and also had a big carcass weight and measured 17mm of fats on the P8.

CALVING EASE		June 2016 Australasian Charolais GROUP BREEDPLAN															
	CED	DTRS	GL	BW	200	400	600	MCWT	MILK	SS		CWT	EMA	RIB	RUMP	RBY%	IMF%
EBV	1.6	-0.4	-1.6	0.5	15	31	36	37	5	1.6		23	2.1	0.7	1	0.1	0.2
Acc	45%	41%	52%	69%	57%	59%	59%	55%	49%	67%		51%	46%	47%	46%	48%	45%

Traits Observed: BWT,400WT,SS,FAT,EMA,IMF

Purchaser:

Price:

<b>Lot 57</b>	<b>DSK BD LANCE L10E (P)</b>	Age: <b>19</b>	<b>CHAROLAIS</b>	Animal ID: <b>DSKL10E</b>
	Born: <b>28/01/2015</b>	Group; <b>2-C</b>	<b>White Polled</b>	<b>Registered</b>
	SCHURRTOP 5627 PED-5627E (H)		MINNIE VALE SUNDANCE SGSS31E (H)	
	LT WYOMING WIND 4020 PLD (P) OAUP4020E (P)		MOONGOOL YOKEL DP2Y218E (H)	
	LT CHAP'S LADY 217 OP PED-2170E (H)		MOONGOOL ALYSSA 4 DP2U68E (H)	
<b>Sire: BAROOLA D989E (AI) (ET) (P) NCFD989E (P)</b>			<b>Dam: DSK MY DREAM VIOLA D35E (P) DSKD35E (P)</b>	
	PALGROVE METRIC PKM62E (H)		GLENDYR TUESDAY (AI) (P) CVT7E (P)	
	BAROOLA KARLA 2 NCFR2E (D)		GLENDYR VIOLA (P) CVV4E (P)	
	BAROOLA KARLA NCFK1F (D)		PINNAROO RED DREAM GIRL 6 BAAS134E (D)	

A long bodied stylish bull with big potential from a top polled red factor cow who will be flushed in the future. A young sire who has the frame, muscle content and finishing ability to add dollars to his progeny.

CALVING EASE		June 2016 Australasian Charolais GROUP BREEDPLAN															
	CED	DTRS	GL	BW	200	400	600	MCWT	MILK	SS	DTC	CWT	EMA	RIB	RUMP	RBY%	IMF%
EBV	1.1	-4.1	-1.4	0.7	10	16	20	22	3	1.9		12	0.9	0.6	1	-0.3	0.1
Acc	40%	35%	42%	68%	51%	51%	55%	51%	42%	45%		44%	36%	41%	41%	39%	36%

Traits Observed: BWT,400WT,SS,FAT,EMA,IMF

Purchaser:

Price:

<b>Lot 58</b>	<b>DSK BD LOT OF GOOD L41E</b>	Age: <b>15</b>	<b>CHAROLAIS</b>	<b>Animal ID: DSKL41E</b>
	Born: 15/05/2015	Group; <b>3-C</b>	White Dehorned	Registered
	SCHURRTOP 5627 PED-5627E (H)		FLEETS RASCAL IAEF6170F	
	LT WYOMING WIND 4020 PLD (P) OAUP4020E (P)		PALGROVE NAPOLEON (AI) (ET) PKN114F (H)	
	LT CHAP'S LADY 217 OP PED-2170E (H)		SUNDOWNER RANCHES N076F (AI) (ET) SRN76F	
<b>Sire: BAROOLA D989E (AI) (ET) (P) NCFD989E (P)</b>			<b>Dam: PALGROVE BRONWIN 71 (AI) (TW) PKY149E (H)</b>	
	PALGROVE METRIC PKM62E (H)		GUNNADOO RED BARON R/F GN1Q31D (D)	
	BAROOLA KARLA 2 NCFR2E (D)		PALGROVE BRONWIN 55 PKV286E (H)	
	BAROOLA KARLA NCFK1F (D)		PALGROVE BRONWIN 40 PKQ104E (H)	

A natural calf from our Palgrove donor dam, Y149 who displays plenty of growth. Dam, Y149, has bred well for us and continues in our donor program. Bronwyn 55 was interbreed female at Sydney Royal.

CALVING EASE		June 2016 Australasian Charolais GROUP BREEDPLAN															
	CED	DTRS	GL	BW	200	400	600	MCWT	MILK	SS		CWT	EMA	RIB	RUMP	RBY%	IMF%
EBV	4.4	5.6	-1.2	1	14	30	32	42	6	-0.5		23	1	-0.2	-0.3	0.1	0.3
Acc	43%	39%	46%	58%	58%	61%	59%	54%	50%	71%		52%	48%	49%	48%	50%	47%

Traits Observed: CE,400WT,SS,FAT,EMA,IMF

Purchaser:

Price:

<b>Lot 59</b>	<b>DSK BD L17E</b>	Age: <b>18</b>	<b>CHAROLAIS</b>	
	Born: 26/02/2015	Group; <b>3-C</b>	White Polled	Not Registered
	SCHURRTOP 5627 PED-5627E (H)		LT WESTERN EDGE 4057 PLD M686616 (P) OAUZ6616E (P)	
	LT WYOMING WIND 4020 PLD (P) OAUP4020E (P)		DSK EDGE IT TO SLIPS E18 (AI) (ET) (P) DSKE18E (P)	
	LT CHAP'S LADY 217 OP PED-2170E (H)		DSK GN JULIETTE U1E (AI) (P) DSKU1E (P)	
<b>Sire: BAROOLA D989E (AI) (ET) (P) NCFD989E (P)</b>			<b>Dam: DSK E18 G98E (P)</b>	
	PALGROVE METRIC PKM62E (H)		WCR SIR FA MAC 2244 M 234430 (P)	
	BAROOLA KARLA 2 NCFR2E (D)		DSK MAC ESTELLE D37E (AI) (ET) (P)	
	BAROOLA KARLA NCFK1F (D)		PALGROVE ESTELLA 31 (AI) (ET)	

A pedigree loaded with top Charolais AI sires with Wind, Mac and Western Edge. A young sire that will mature into a top commercial sire.

June 2016 Australasian Charolais GROUP BREEDPLAN																		
	CED	DTRS	GL	BW	200	400	600	MCWT	MILK	SS	DTC	CWT	EMA	RIB	RUMP	RBY%	IMF%	
EBV																		
Acc																		

Purchaser:

Price:

<b>Lot 60</b>	<b>DSK ME LARADO L3E (P) (R/F)</b>	Age: <b>19</b>	<b>CHAROLAIS</b>	<b>Animal ID: DSKL3E</b>
	Born: 25/01/2015	Group; <b>3-C</b>	Cream Polled	Registered
	MINNIE VALE SUNDANCE SGSS31E (H)		ROSEDALE YOUR IT MRY84E (H)	
	MOONGOOL WINCHESTER DP2W300E (H)		ARABAR CAELAN (P) DRWC4E (P)	
	MOONGOOL LINDA DP2P25E (H)		AIRLIE KELLY U219E (AI) (ET) (P) A1SU219E (P)	
<b>Sire: MOONGOOL ENCORE (P) DP2E438E (P)</b>			<b>Dam: DSK AC LINDA G4E (P) DSKG4E (P)</b>	
	STANTON CASTLEWOOD JMDP12E		MOONGOOL WINCHESTER DP2W300E (H)	
	TEMANA GLORIA V14 TJV14E		MOONGOOL Z185 DP2Z185E (H)	
	ALLEDNAW GLORIA AKG4D		BUNYA-VALE BYVX6E (D)	

Bull displaying an early maturity pattern and suited to most markets with good growth and early finishing ability.

CALVING EASE		June 2016 Australasian Charolais GROUP BREEDPLAN															
	CED	DTRS	GL	BW	200	400	600	MCWT	MILK	SS		CWT	EMA	RIB	RUMP	RBY%	IMF%
EBV	-0.3	-4.6	-1.5	0.4	6	16	25	27	10	1.7		15	1.5	0.3	0.4	0.1	0.2
Acc	38%	29%	39%	56%	49%	48%	52%	46%	38%	47%		43%	35%	41%	40%	39%	35%

Traits Observed: 400WT,SS,FAT,EMA,IMF

Purchaser:

Price:

<b>Lot 61</b>	<b>DSK ME K70E</b>	Age: <b>20</b>	<b>CHAROLAIS</b>	
	Born: 16/12/2014	Group; <b>3-C</b>	White Polled	Not Registered
	MINNIE VALE SUNDANCE SGSS31E (H)		AIRLIE XYLEM A1SX104E (D)	
	MOONGOOL WINCHESTER DP2W300E (H)		AIRRLIE BORAT (P) (R/F) A1SB21E (P)	
	MOONGOOL LINDA DP2P25E (H)		DSK GN JULIETTE U1E (AI) (P) DSKU1E (P)	
<b>Sire: MOONGOOL ENCORE (P) DP2E438E (P)</b>			<b>Dam: DSK RED BEATRIX E72E (P) (R/F) DSKE72E (P)</b>	
	STANTON CASTLEWOOD JMDP12E		SILVERSTREAM JONAH J91F 83J91F (H)	
	TEMANA GLORIA V14 TJV14E		DSK SJ BEATRIX V8 (AI) (P) DSKV8E (P)	
	ALLEDNAW GLORIA AKG4D		ROSEDALE BEATRIX 9 (AI) (P) MRP14E (P)	

Similar maturity pattern to previous lot to suit all markets. The Encore bull produces moderate and easy doing progeny.

CALVING EASE		June 2016 Australasian Charolais GROUP BREEDPLAN															
	CED	DTRS	GL	BW	200	400	600	MCWT	MILK	SS		CWT	EMA	RIB	RUMP	RBY%	IMF%
EBV																	
Acc																	

Purchaser:

Price:

<b>Lot 62</b>	<b>DSK G6 LUE L106</b>	Age: <b>16</b>	ANGUS	HBR	<b>Animal ID: NKSL106</b>
	Born: 10/04/2015	Group; <b>3-A</b>	<b>Genetic Status:</b> AMFU, NHFU, CAFU, DDFU		
	AVONLEE YORKER Y19 BKY19		PACK POWER SCOTCH CAP 889(ET) USA889		
	COBBADAH CREEK Y19 P.FRED D149 BIQD149		MERRIDALE PACK-N-POWER A46(AI)(ET) CMDA46		
	BOOROOMOOKA REFRESH R129(AI) NGMR129		MERRIDALE MILDRED S16(AI)(ET) CMDS16		
<b>Sire: DSK CCD GERALD G6 NKSG6</b>		<b>Dam: DSK PNP ELBA G92 NKSG92</b>			
	PALES NE MAGISTRATE M12(AI)(ET) NJUM12		DSK HR XTRA X1(AI)(ET) NK SX1		
	DSK PM PANDA R3 NKSR3		DSK X1 ELBA D78 NKSD78		
	DSK WB PANDA M7(AI)(ET) NKSM7		DSK V6 ELBA Z63 (TW) Z63(TW) NK SZ63		

Another good Gerald son showing the extra volume and sire appeal which is a feature of his progeny. L106 show good width across the loin and topline where the good cuts are.

CALVING EASE		July 2016 Angus Australia BREEDPLAN															
	CED	DTRS	GL	BW	200	400	600	MCWT	MILK	SS	DTC	CWT	EMA	RIB	RUMP	RBY%	IMF%
EBV	-1.8	-1	-2	7	46	90	111	113	11	1.8	-1.4	65	1.4	-1.8	-1	0.4	0.8
Acc	35%	27%	36%	57%	57%	61%	57%	50%	39%	66%	29%	49%	50%	50%	52%	46%	42%

Traits Observed: 400WT,SS,FAT,EMA,IMF

Purchaser:

Price:

<b>Lot 63</b>	<b>DSK G2 LARRY L104</b>	Age: <b>16</b>	ANGUS	HBR	<b>Animal ID: NKSL104</b>
	Born: 05/04/2015	Group; <b>3-A</b>	<b>Genetic Status:</b> AMFU, NHFU, CAFU, DDFU		
	PACK POWER SCOTCH CAP 889(ET) USA889		PACK POWER SCOTCH CAP 889(ET) USA889		
	MERRIDALE PACK-N-POWER A46(AI)(ET) CMDA46		MERRIDALE PACK-N-POWER A46(AI)(ET) CMDA46		
	MERRIDALE MILDRED S16(AI)(ET) CMDS16		MERRIDALE MILDRED S16(AI)(ET) CMDS16		
<b>Sire: DSK BN GEORGE G2(AI) NKSG2</b>		<b>Dam: DSK PNP ISOBYX D153 NKSD153</b>			
	HOFF ULTRA S C 108 USASC108		S V F HI ROAD USA956		
	DSK HU PANDA W9(AI)(ET) NKSW9		DSK HR ISOBYX V31(AI) NKSV31		
	DSK PM PANDA R3 NKSR3		STRATHTAY ISOBYX L18+91(AI) WJYL18+91		

Good skin and hair type on this young sire and with a wide hip and hindquarter. Strong maternal pedigree with Hi Road and descending from L18 who was a calf at foot on a foundation cow for DSK who was successful around the shows and bred very well.

CALVING EASE		July 2016 Angus Australia BREEDPLAN															
	CED	DTRS	GL	BW	200	400	600	MCWT	MILK	SS	DTC	CWT	EMA	RIB	RUMP	RBY%	IMF%
EBV	-0.8	-1.3	-1	5.4	39	76	96	99	12	1.4	-0.8	54	2.6	-2.3	-2.2	1	1
Acc	40%	32%	49%	61%	61%	64%	61%	54%	46%	69%	34%	53%	54%	54%	56%	50%	47%

Traits Observed: 400WT,SS,FAT,EMA,IMF

Purchaser:

Price:

Lot 64	DSK SJ G2 LONG SHOT L57	Age: 17	ANGUS	HBR	Animal ID: NKSL57
	Born: 07/03/2015	Group; 3-A	Genetic Status: AMFU, NHFU, CAFU, DD2%		
Account B & S Johnson					
	PACK POWER SCOTCH CAP 889(ET) USA889		S V F HI ROAD USA956		
	MERRIDALE PACK-N-POWER A46(AI)(ET) CMDA46		DSK HR XTRA X1(AI)(ET) NK SX1		
	MERRIDALE MILDRED S16(AI)(ET) CMDS16		TE MANIA BARWON K201+90(AI)(ET) VTMK201+90		
Sire: DSK BN GEORGE G2(AI) NKSG2		Dam: DSK X1 AMBUSH B88 NKSB88			
	HOFF ULTRA S C 108 USASC108		PARAMONT AMBUSH 2172 USA2172		
	DSK HU PANDA W9(AI)(ET) NKSW9		MERRIC RIVERS AMBUSH V100(AI)(ET) NXJV100		
	DSK PM PANDA R3 NKSR3		TE MANIA JEDDA L103+91 VTML103+91		

Dam, B88 is a cow with loads of milk and depth of side. L57 show length of body and good bone.

CALVING EASE		July 2016 Angus Australia BREEDPLAN															
	CED	DTRS	GL	BW	200	400	600	MCWT	MILK	SS	DTC	CWT	EMA	RIB	RUMP	RBY%	IMF%
EBV	0.7	0.8	-1.4	4.4	34	64	81	86	11	-0.7	-1	46	2.8	-1.3	-1.4	0.1	1.1
Acc	39%	31%	48%	66%	60%	63%	61%	55%	43%	68%	33%	51%	52%	52%	54%	48%	45%

Traits Observed: BWT,400WT,SS,FAT,EMA,IMF

Purchaser:

Price:

<b>Lot 65</b>	<b>DSK G6 LESTER L25</b>	Age: <b>19</b>	ANGUS	HBR	<b>Animal ID: NKSL25</b>
	Born: 30/01/2015	Group; <b>3-A</b>	<b>Genetic Status:</b> AMFU, NHFU, CAFU, DD3%		
	AVONLEE YORKER Y19 BKY19		PACK POWER SCOTCH CAP 889(ET) USA889		
	COBBADAH CREEK Y19 P.FRED D149 BIQD149		MERRIDALE PACK-N-POWER A46(AI)(ET) CMDA46		
	BOOROOMOOKA REFRESH R129(AI) NGMR129		MERRIDALE MILDRED S16(AI)(ET) CMDS16		
<b>Sire: DSK CCD GERALD G6 NKSG6</b>		<b>Dam: DSK PNP ERINETTE F130 NKSF130</b>			
	PALES NE MAGISTRATE M12+92(AI)(ET) NJUM12+92		DSK HLE ATOMIC BIG EARS A99(AI)(ET) NKSA99		
	DSK PM PANDA R3 NKSR3		DSK ABE ERINETTE D19(AI) NKSD19		
	DSK WB PANDA M7+92(AI)(ET) NKSM7+92		DSK W13 ERINETTE A70 NKSA70		

L25 is a bull showing depth of side and overall power and should produce progeny to suit most markets while increasing weight for age. Dam F130 has been a top breeder and Grand dam, D19 has a top Excaliber sire prospect for next year.

CALVING EASE		July 2016 Angus Australia BREEDPLAN															
	CED	DTRS	GL	BW	200	400	600	MCWT	MILK	SS	DTC	CWT	EMA	RIB	RUMP	RBY%	IMF%
EBV	-1.2	-1.1	-2.7	5.9	38	73	91	95	10	1.2	0.5	53	0.2	-2.6	-1.8	0.5	0.7
Acc	36%	27%	40%	58%	58%	63%	59%	51%	40%	67%	29%	51%	52%	52%	54%	48%	44%

Traits Observed: 400WT,SS,FAT,EMA,IMF

Purchaser:

Price:



<b>Lot 66</b>	<b>DSK G2 LIONEL L98</b>	Age: <b>17</b>	ANGUS	HBR	<b>Animal ID: NKSL98</b>
	Born: 21/03/2015	Group; <b>3-A</b>	<b>Genetic Status:</b> AMFU, NHFU, CAFU, DD11%		
	PACK POWER SCOTCH CAP 889(ET) USA889		B/R NEW DESIGN 323 USA323		
	MERRIDALE PACK-N-POWER A46(AI)(ET) CMDA46		AVONLEE WEAPON W13(AI)(ET) BKTW13		
	MERRIDALE MILDRED S16(AI)(ET) CMD516		SPARTA TIARA L50+91 NMKL50+91		
<b>Sire: DSK BN GEORGE G2(AI) NKSG2</b>			<b>Dam: DSK W13 POLLY B63(AI) NKSB63</b>		
	HOFF ULTRA S C 108 USASC108		EDI ANGUS RITO V6(AI) CMFV6		
	DSK HU PANDA W9(AI)(ET) NKSW9		DSK V6 POLLY Z48 NKSZ48		
	DSK PM PANDA R3 NKSR3		DSK FB POLLY U22(AI) NKSU22		

Young sire with growth and stretch with a good female line going back to the good cow U22, the same as Lot 48.

CALVING EASE			July 2016 Angus Australia BREEDPLAN														
	CED	DTRS	GL	BW	200	400	600	MCWT	MILK	SS	DTC	CWT	EMA	RIB	RUMP	RBY%	IMF%
EBV	-0.5	-0.8	-2	5.3	37	71	90	96	10	0.7	-1	51	2.2	-1.3	-1.4	0.7	0.8
Acc	37%	29%	56%	55%	50%	50%	52%	47%	43%	46%	30%	42%	42%	44%	44%	40%	39%

Purchaser:

Price:

<b>Lot 67</b>	<b>DSK G2 LEADER L95</b>	Age: <b>17</b>	ANGUS	HBR	<b>Animal ID: NKSL95</b>
	Born: 11/03/2015	Group; <b>3-A</b>	<b>Genetic Status:</b> AMFU, NHFU, CAFU, DD1%		
	PACK POWER SCOTCH CAP 889(ET) USA889		PACK POWER SCOTCH CAP 889(ET) USA889		
	MERRIDALE PACK-N-POWER A46(AI)(ET) CMDA46		MERRIDALE PACK-N-POWER A46(AI)(ET) CMDA46		
	MERRIDALE MILDRED S16(AI)(ET) CMD516		MERRIDALE MILDRED S16(AI)(ET) CMD516		
<b>Sire: DSK BN GEORGE G2(AI) NKSG2</b>			<b>Dam: DSK P.N.P. FLOWER E65 NKSE65</b>		
	HOFF ULTRA S C 108 USASC108		BLACK VELVET WILLYBOY J31+89(AI) WZJJ31+89		
	DSK HU PANDA W9(AI)(ET) NKSW9		DSK WB FLOWER A40 NKSA40		
	DSK PM PANDA R3 NKSR3		PALES HR FLOWER V8(AI)(ET) NJUV8		

A smooth, clean fronted young bull with length of neck which we look for in our cows. Maternal side comes from the flower line that produced Glenoch Megaforce.

CALVING EASE			July 2016 Angus Australia BREEDPLAN														
	CED	DTRS	GL	BW	200	400	600	MCWT	MILK	SS	DTC	CWT	EMA	RIB	RUMP	RBY%	IMF%
EBV	-0.4	-0.9	-1.2	5.2	35	69	88	90	11	0.5	0.1	51	3.2	-2.3	-1.7	0.6	0.8
Acc	39%	31%	48%	60%	61%	64%	62%	54%	45%	69%	34%	53%	54%	54%	56%	50%	47%

Traits Observed: 400WT,SS,FAT,EMA,IMF

Purchaser:

Price:

<b>Lot 68</b>	<b>DSK G2 LEVO L105</b>	Age: <b>16</b>	ANGUS	HBR	<b>Animal ID: NKSL105</b>
	Born: 08/04/2015	Group; <b>3-A</b>	<b>Genetic Status:</b> AMFU, NHFU, CAFU, DDFU		
	PACK POWER SCOTCH CAP 889(ET) USA889		PACK POWER SCOTCH CAP 889(ET) USA889		
	MERRIDALE PACK-N-POWER A46(AI)(ET) CMDA46		MERRIDALE PACK-N-POWER A46(AI)(ET) CMDA46		
	MERRIDALE MILDRED S16(AI)(ET) CMD516		MERRIDALE MILDRED S16(AI)(ET) CMD516		
<b>Sire: DSK BN GEORGE G2(AI) NKSG2</b>			<b>Dam: DSK PNP DANDALOO D159 NKSD159</b>		
	HOFF ULTRA S C 108 USASC108		PREMIER INDEPENDENCE K N USA1871		
	DSK HU PANDA W9(AI)(ET) NKSW9		ALEX PI DANDALOO W4(AI)(ET) DIJW4		
	DSK PM PANDA R3 NKSR3		DSK WB DANDLOO P22 NKSP22		

L105 will develop into a powerful robust bull to produce good feeder market progeny.

CALVING EASE			July 2016 Angus Australia BREEDPLAN														
	CED	DTRS	GL	BW	200	400	600	MCWT	MILK	SS	DTC	CWT	EMA	RIB	RUMP	RBY%	IMF%
EBV	0.4	-0.6	-0.6	4.9	32	63	80	81	11	0.3	0.8	47	1.5	-2.3	-1.4	0.2	1
Acc	40%	32%	50%	60%	60%	63%	60%	53%	44%	69%	33%	52%	52%	52%	54%	48%	44%

Traits Observed: 400WT,SS,FAT,EMA,IMF

Purchaser:

Price:

<b>Lot 69</b>	<b>DSK G2 LIFER L90</b>	Age: <b>17</b>	ANGUS	HBR	<b>Animal ID: NKSL90</b>
	Born: 01/03/2015	Group; <b>3-A</b>	<b>Genetic Status:</b> AMFU, NHFU, CAFU, DDFU		
	PACK POWER SCOTCH CAP 889(ET) USA889		HOFF HI SPADE S C 491 USASC491+		
	MERRIDALE PACK-N-POWER A46(AI)(ET) CMDA46		S V F HI ROAD USA956		
	MERRIDALE MILDRED S16(AI)(ET) CMD516		LADY BLACKBIRD 111 G D A R USA111		
<b>Sire: DSK BN GEORGE G2(AI) NKSG2</b>			<b>Dam: DSK HR MARTINA C166(AI)(ET) NKSC166</b>		
	HOFF ULTRA S C 108 USASC108		PACK POWER SCOTCH CAP 889(ET) USA889		
	DSK HU PANDA W9(AI)(ET) NKSW9		DSK PP MARTINA R9(AI)(ET) NKSR9		
	DSK PM PANDA R3 NKSR3		MERRIGRANGE MARTINA H129+88(AI)(ET) VMGH129+88		

Another young sire showing length of body which we strive for in our program which is the reason for not using mainstream North American genetics. Dam, C166 is a Hi Road daughter from our top donor R9 and a full ET sister to one of our best donors, Martina V5.

CALVING EASE				July 2016 Angus Australia BREEDPLAN													
	CED	DTRS	GL	BW	200	400	600	MCWT	MILK	SS	DTC	CWT	EMA	RIB	RUMP	RBY%	IMF%
EBV	-0.9	-1.1	-1.4	5.5	38	69	89	95	8	0.3	-1.5	51	2.5	-2.6	-2.9	1.2	1
Acc	42%	34%	50%	59%	60%	64%	61%	54%	46%	69%	37%	53%	54%	54%	56%	50%	47%

Traits Observed: 400WT,SS,FAT,EMA,IMF

Purchaser:

Price:

<b>Lot 70</b>	<b>DSK G2 LUSTY L99</b>	Age: <b>17</b>	ANGUS	HBR	<b>Animal ID: NKSL99</b>
	Born: 21/03/2015	Group: <b>3-A</b>	<b>Genetic Status:</b> AMFU, NHFU, CA3%, DDFU		
	PACK POWER SCOTCH CAP 889(ET) USA889		PACK POWER SCOTCH CAP 889(ET) USA889		
	MERRIDALE PACK-N-POWER A46(AI)(ET) CMDA46		MERRIDALE PACK-N-POWER A46(AI)(ET) CMDA46		
	MERRIDALE MILDRED S16(AI)(ET) CMDS16		MERRIDALE MILDRED S16(AI)(ET) CMDS16		
<b>Sire: DSK BN GEORGE G2(AI) NKSG2</b>		<b>Dam: DSK PNP PANDA D71 NKSD71</b>			
	HOFF ULTRA S C 108 USASC108		J R JUICE Z005 USAZ005		
	DSK HU PANDA W9(AI)(ET) NKSW9		DSK ZOO5 PANDA W1(AI) NKSW1		
	DSK PM PANDA R3 NKSR3		DSK PC PANDA T2(AI) NKST2		

An active long bodied bull with a good sires outlook. I am confident that L99 will produce well above his EBV's when you look at the frame and stretch that he has.

CALVING EASE		July 2016 Angus Australia BREEDPLAN															
	CED	DTRS	GL	BW	200	400	600	MCWT	MILK	SS	DTC	CWT	EMA	RIB	RUMP	RBY%	IMF%
EBV	0.7	-0.5	-1.9	4.8	33	63	78	82	10	0.8	-0.3	46	2.7	-2.4	-1.8	0.8	0.8
Acc	40%	32%	54%	61%	61%	64%	62%	54%	46%	69%	34%	53%	54%	54%	56%	50%	47%

Traits Observed: 400WT,SS,FAT,EMA,IMF

Purchaser:

Price:

Notes:

**REMITALL H RACHIS 21R****Angus Reference Sire**

CONNEALY DATELINE USA12015519

VERMILION DATELINE 7078 USA7078

VERMILION BLACKBIRD 5044 USA5044

**Sire: REMITALL NIGHTHAWK 37N CAN1171920**

LEACHMAN RIGHT TIME USA2700

DIAMOND D EVERA 073G CAN944010

EVERA OF G G 73X CAN660954

NICHOLS EUREKA W57 USA11000663

O G L BATTLE CRY 427 128 USA12215320

O G L DUSTY ROSE 128 902 USA11630589

**Dam: HENDERSON MISSIE 32'02 CAN1122972**

HFI AUGUSTAS CAN752070

HENDERSON MISIE 2'97 CAN890141

HENDERSON MISSIE 24'87 CAN642959

**HBR****Animal ID: CAN1274555****Genetic Status:****AMF, NHF, CAFU, DDFU**

Best bull we have used in the DSK herd to date for consistency of pattern, muscle, easy finishing, great temperament, good producing daughters and overall meat to bone ration in his Angus progeny. DSK has sole use of this bull as we purchased the Australian semen rights and have only released 30 doses of semen for outside herd use back in 2012. Sons have sold to \$20,000 and daughters to \$16,000. Produced Royal Show Grand Champions in his first year of breeding at DSK and has continued in the same standard. Daughters proving to be excellent breeders as well with heavy weaning weights and overall performance.

CALVING EASE		July 2016 Angus Australia BREEDPLAN															
	CED	DTRS	GL	BW	200	400	600	MCWT	MILK	SS	DTC	CWT	EMA	RIB	RUMP	RBV%	IMF%
EBV	-3.3	-2.5	-0.7	6.8	53	98	116	113	18	1.6	-5.2	70	1.1	-1.1	-0.2	0.9	0.5
Acc	Acc	64%	47%	88%	93%	88%	88%	87%	78%	81%	85%	40%	74%	74%	76%	73%	68%

Statistics: Number of Herds: 9, Number of Dtrs: 15, Prog Analysed: 147, Scan Prog: 108

**KANSAS UPWARD G198(AI)****Angus Reference Sire**

CONNEALY LEAD ON USA13447282

CONNEALY ONWARD USA14216491

ALTUNE OF CONANGA 6104 USA13169198

**Sire: SITZ UPWARD 307R USA14963730**

SITZ VALUE 7097 USA7097

SITZ HENRIETTA PRIDE 81M USA14087650

SITZ HENRIETTA PRIDE 1370 USA13576315

B/R NEW DESIGN 036 USA036

BON VIEW NEW DESIGN 1407 USA1407

BON VIEW PRIDE 664 USA12139985

**Dam: KANSAS ANNIE Y656(AI)(ET) NKLY656**

G T EXPO USA11160688

AMAROO EXPO ANNIE U024(AI)(ET) BYEU024

SUMMITCREST ANNIE C022 USAC022

**HBR****Animal ID:****NKLG198****Genetic Status:****AMF, NHF, CAF, RDF, DDF**

Purchased as a calf at foot of Y656 who we bought in to use as a donor female. Great muscling on a moderate frame. Used predominantly to join our heifers, to date all his calves have been born unassisted in the 3 calf drops that he has had so far. Good temperament, skin and hair type. Sired the Reserve Champion Carcase for DSK at the 2015 Sydney Royal Purebred Steer and Carcase Competition only 1/2 point behind the Champion at 93 points.

CALVING EASE		July 2016 Angus Australia BREEDPLAN															
	CED	DTRS	GL	BW	200	400	600	MCWT	MILK	SS	DTC	CWT	EMA	RIB	RUMP	RBV%	IMF%
EBV	0.4	-1.7	-3.4	4.4	51	91	122	90	21	1.7	-3.8	67	8.5	-1	-2.3	2.1	1.3
Acc	63%	51%	61%	83%	76%	74%	77%	72%	63%	71%	45%	66%	63%	64%	64%	61%	60%

Statistics: Number of Herds: 2, Prog Analysed: 40, Scan Prog: 18



**DSK CCD GERALD G6****Angus Reference Sire****HBR****Genetic Status:****Animal ID: NKSG6****AMF, NHF, CAF, RDC, DDF**

PALES SH VETO V10(AI)(ET) NJUV10

AVONLEE YORKER Y19 BKTY19

AVONLEE KIWI V13(AI)(ET) BKTIV13

**Sire: COBBADAH CREEK Y19 P.FRED D149 BIQD149**

V D A R NEW TREND 315 USA315

BOOROOMOOKA REFRESH R129(AI) NGMR129

BOOROOMOOKA PAULA P10(AI) NGMP10

ONEILLS NORTHERN ERROLL (IMP USA) USA225

PALES NE MAGISTRATE M12(AI)(ET) NJUM12

NORANDA MONA J35+89 SNOJ35+89

**Dam: DSK PM PANDA R3 NKSR3**

BLACK VELVET WILLYBOY J31+89(AI) WZJJ31+89

DSK WB PANDA M7(AI)(ET) NKSM7

TE MANIA PANDA E12. VTME12+85



The last calf from our top R3 donor dam who was Interbreed Champion at Sydney in 1998, the first time the Angus breed had managed that prestigious title. She has bred many champions and great progeny since and breeding on until she was 18 years of age. R3 is also the dam of our current best donor, W9.

CALVING EASE		July 2016 Angus Australia BREEDPLAN															
	CED	DTRS	GL	BW	200	400	600	MCWT	MILK	SS	DTC	CWT	EMA	RIB	RUMP	RBY%	IMF%
EBV	-2.3	-1.1	-2.3	6.1	39	76	90	91	10	1.4	-0.7	55	1.5	-2	-1.1	0.5	0.5
Acc	52%	38%	52%	80%	73%	74%	73%	67%	54%	71%	38%	62%	63%	62%	64%	58%	54%

Statistics: Number of Herds: 1, Prog Analysed: 31, Scan Prog: 14

**DSK GEORGE G2(AI)****Angus Reference Sire****HBR****Genetic Status:****Animal ID: NKSG2****AMF, NHF, CAF, RDF, DDF**

SCOTCH CAP USA14

PACK POWER SCOTCH CAP 889(ET) USA889

SIR WMS ELBA 374 USA374

**Sire: MERRIDALE PACK-N-POWER A46(AI)(ET) CMDA46**

BON VIEW EMULATION EXT 473 USA473

MERRIDALE MILDRED S16(AI)(ET) CMDS16

MERRIGRANGE MILDRED J2+89(AI)(ET) VMGJ2+89

O S U 6T6 ULTRA USA11870571

HOFF ULTRA S C 108 USASC108

HOFF MISS NORTHLANDER SC 908 USASC908

**Dam: DSK HU PANDA W9(AI)(ET) NKSW9**

PALES NE MAGISTRATE M12(AI)(ET) NJUM12

DSK PM PANDA R3 NKSR3

DSK WB PANDA M7(AI)(ET) NKSM7

A sire with a lot of length, good skin and hair with good phenotype. Dam is our top producing donor dam, W9 who has had sons sell to \$10,000 and a daughters to \$15,000.

CALVING EASE		July 2016 Angus Australia BREEDPLAN															
	CED	DTRS	GL	BW	200	400	600	MCWT	MILK	SS	DTC	CWT	EMA	RIB	RUMP	RBY%	IMF%
EBV	0.2	-0.8	-0.8	5.5	37	73	93	96	11	0.9	0.3	53	2.5	-2.8	-2.5	1	1
Acc	57%	43%	76%	80%	72%	73%	73%	67%	59%	74%	43%	61%	61%	62%	63%	57%	55%

Statistics: Number of Herds: 1, Prog Analysed: 29, Scan Prog: 15

**TEMANA GOLDEN LOGIE G66E (P) (R/F)****Charolais Reference Sire****Polled****Red factor****Animal ID: TJG66E****Registered Australian Purebred**

COLINTA L98/2 (AI) ISAT1002E

TEMANA XOROX TJX77E (D)

TEMANA NANNY 1ST TJS19E (D)

**Sire: YACCAMOO COWBOY (P) PIKC15E (P)**

GAUGUIN OAF1859F (H)

YACCAMOO (AI) (P) PIKX20E (P)

YACCAMOO LOVERGIRL 11 PIKR11E (H)

INVINCIBLE GAEC DERIMAY OAF-1893F (H)

MEILLARD RJ OAFR196F (H)

BADINE VANNIER PERE &amp; FILS R4S OAF-7186F (H)

**Dam: TEMANA X104 (AI) (ET) TJX104E (D)**

BENBURB FEANOR (P) BBF1E (P)

TEMANA LORETTA (P/S) TJL78E (S)

TEMANA G49E TJG49E (H)



After two inspections, Golden Logie became a must have sire and was purchased in 2013 in partnership with the Price family of Moongool Charolais stud in Queensland. His first crop of calves have been outstanding. Golden Logie was purchased to add power and performance to our North American LT blood females while putting finishing ability and high maternal traits from his high milking dam. Golden Logie is going to make an impact in the Charolais breed and is fast on the way to proving himself a first class sire.

CALVING EASE		June 2015 Australasian Charolais GROUP BREEDPLAN															
	CED	DTRS	GL	BW	200	400	600	MCWT	MILK	SS	DTC	CWT	EMA	RIB	RUMP	RBY%	IMF%
EBV	1.9	-3	-0.2	0.9	6	11	17	22	5	0.1		12	2	-0.5	-0.7	1	0
Acc	53%	39%	43%	77%	51%	53%	56%	51%	33%	50%		40%	29%	30%	29%	31%	28%

Statistics: Number of Herds: 3, Progeny Analysed: 42, Scan Progeny: 10,

**SVY PILGRIM PLD 655S (P)****Charolais Reference Sire**

WCR PRIME CUT 764 PLD PMC223447 (P) OACS764E (P)

LT RIO BLANCO 1234 P (P) OAUW591E (P)

LT PRAIRIE MAID 4054 PED-4694E (H)

**Sire: SVY PIONEER 402P PED-8416E**

SKYMONT EASE 2078 PED-5420E (H)

SVY JINGLES 153L PED-3049E

WINDYVIEW JIGGLES 2J PED-9651E

E-CEE KATMANDU 200B PED-502E (H)

RGP EUREKA 17E PMC179283 (P) OACQ17E (P)

AGV MASTERLADY 17Y PED-788E (H)

**Dam: HFCC FRENCHKISS 919J PED-9584E**

SIR QCR HIGHGEAR 2P OAC-74E

QCR FRENCHKISS 33F PED-8979E

QCR DIMPLES 39D PED-939E

**Polled  
White****Animal ID: OACB3031E  
Registered Australian Purebred**

We feel this bull will have a big impact on the Charolais breed in Australia. Producing progeny with big capacity and volume, lots of muscle and easy doing ability. We have daughters in production who milk well and are breeding well.

CALVING EASE		June 2016 Australasian Charolais GROUP BREEDPLAN															
	CED	DTRS	GL	BW	200	400	600	MCWT	MILK	SS	DTC	CWT	EMA	RIB	RUMP	RBV%	IMF%
EBV	7.7	-22.5	-4.7	0.7	21	40	57	45	6	2.7		31	2.1	1.6	2.3	-0.6	0.4
Acc	79%	75%	97%	96%	94%	93%	93%	84%	85%	92%		80%	68%	80%	79%	71%	68%

Statistics: Number of Herds: 54, Progeny Analysed: 387, Scan Progeny: 139, Number of Dtrs: 39

**MOONGOOL ENCORE (P)****Charolais Reference Sire**

COBRABALD PICASSO (AI) (P) ASHP82E (P)

MINNIE VALE SUNDANCE SGSS31E (H)

MINNIE VALE PEANUT SGSP25E (D)

**Sire: MOONGOOL WINCHESTER DP2W300E (H)**

PALGROVE GENERATOR (AI) (P) PKG80D (P)

MOONGOOL LINDA DP2P25E (H)

GUNNADOO LINDA L58E (AI) GN1L58E (H)

KARAWI LYNDONCH (P) KANL8E (P)

STANTON CASTLEWOOD JMDP12E

STANTON G1E (P) JMDG1E (P)

**Dam: TEMANA GLORIA V14 TJV14E**

CORHAN PEWTER (AI) (ET) (P) MJCR35E (P)

ALLEDNAW GLORIA AKG4D

ADD-ZAR O4C GDO4C

**Polled/Scurred  
White****Animal ID: DP2E438E  
Registered Australian Purebred**

This is the 3rd draft of sale bulls by Encore with a son topping last year's Charolais sale draft. Progeny are full of muscle and are easy finishing. Daughters has good udders with small teats. Our Reserve Champion Middleweight steer at Sydney Royal steer show 2014 was sired by Encore.

CALVING EASE		June 2016 Australasian Charolais GROUP BREEDPLAN															
	CED	DTRS	GL	BW	200	400	600	MCWT	MILK	SS	DTC	CWT	EMA	RIB	RUMP	RBV%	IMF%
EBV	0.1	-11	-1.4	0.5	9	26	36	38	8	2.7		24	2	0.1	0.2	0.5	-0.1
Acc	60%	45%	57%	86%	74%	75%	79%	71%	55%	80%		66%	55%	57%	55%	56%	53%

Statistics: Number of Herds: 1, Progeny Analysed: 32, Scan Progeny: 10





# DSK's Canadian and Australian Outcross Program

## Producing Hybrid Vigour in Pure Angus

Chris Knox and Helen Alexander from DSK Angus at Borah Station, Coonabarabran have had a vision for decades of what type of cattle to breed for the sole intent of profitable and easy to manage beef production. This mostly has meant the stud has stayed away from mainstream Angus AI sires with the aim to produce outcross genetic Angus that will compliment the Angus breed. At DSK we have always strived for the larger framed animals with correct structure, good muscling and finishing ability whilst maintaining fertility. With the large influx of North American Angus genetics being infused into the Australian Angus herd we realised that the majority of these cattle were very closely related and highly used in the seed stock industry here. Swimming against the flow, we have always, and continue to, search out those cattle worldwide that are outcross to the mainstream but retain our core breeding objectives. Fertility - Maternal - Muscle - Efficiency - Growth - Yield. We recognise consistent breeding is your main profit driver in any beef enterprise. You must have live calves on the ground every year to begin to make your business work. Easy maintenance of the herd in hard climates and early finishing of the end progeny a big part also. We believe that we can now offer a within breed vigour to those Angus breeders who have been using widely used and over used genetics. We can't keep using familial similar genetics for a prolonged period without seeing a downturn in production success and gains.

With the DSK stud female sale in 2012, this allowed DSK to seek out new outcross genetics from Canada, USA and Western Australia. We were interested in backing up the success of our Canadian blood sires Remitall H Rachis and Black Velvet Willyboy J31. Willyboy J31 was the original foundation paddock sire at DSK when it began in 1988. J31 achieved Grand Champion at Brisbane Royal and Melbourne Royal in 1991 and Sydney Royal in 1992. J31 was sired by Canadian sire Double A Willy Boy 2S.

Consequently we have now gone back to that original Double A herd in Canada and found our next 3 females to continue on with our outcross program. Hopefully they will compliment our existing herd along with our new family lines from Western Australia that are producing well already.

**Remitall H Rachis 21R** was procured as an exclusive AI sire in 2008 after viewing his progeny at Remitall Angus in Alberta, Canada, as well as the bull himself. Rachis 21R has all the attributes to be the next great breeding bull: performance, low birth weight, phenotype, strength of pedigree, temperament, structural soundness, and stoutness of bone. His track record at the shows includes being named the 2006 Canadian National Reserve Champion Bull and the 2007 Edmonton Farmfair Grand Champion Angus and Supreme Champion Bull over all breeds. Not just another pretty show bull, Rachis 21R bred over 60 females natural service in the summer of 2007 at Cooke Livestock who owned 50% of Rachis at that time, before winning his Farmfair title. His first progeny born were very moderate at birth, and he has been successfully used on first-calf heifers. This is one of the most dynamic bulls we have seen, a great young sire who will make a lasting impact on the Angus breed. His first drop of Australian born calves at DSK proved to be just as successful with progeny winning Sires Progeny Groups at Melbourne Royal Angus Feature show in 2011, Canberra Royal in 2012 and Rockhampton Beef 2012 as well as Grand Champion Angus bull Canberra Royal 2012, Reserve Champion Junior Angus Bull Melbourne Royal 2011 and Calf Champion Angus Bull Rockhampton Beef 2012. With sons selling to \$20,000 and daughters to \$16,000.

Rachis now has mature daughters working in our herd and are easy maintainance, highly fertile daughters that are producing some of the heaviest weaners every year no matter the season. Across the country his DSK daughters that were purchased as heifers in our 2012 female sale are achieving great results also with many people letting us know what great breeders they have become.

In late 2012 Helen viewed the herd at Coldstream Angus in Alberta, Canada. This herd has traded genetics internationally as well as across Canada with genetics performing extremely well in the UK. We were particularly attracted to the highly productive daughters of Coldstream Paradox 73N who was Senior Champion bull at Farmfair International in 2005 and the Canadian World Angus Forum in 2009. DSK successfully purchased two females including **Coldstream Blackbird 73Y** who is a maternal sister to Paradox 73N. **Coldstream Lady Heather 92S** was the 2<sup>nd</sup> female purchased by DSK and is sired by Paradox 73N and 92S had an excellent daughter in the sale which was our pick of the day. A ¾ sister to 92S also by Paradox was the high selling cow selling to Mooline Angus, of Denmark. These 2 females produced nearly 150 embryos for us in a very successful program.

We are pleased to offer sons of matriarch Coldstream Lady Heather 92S and sired by Rachis, DBRL 03M Titan 4T. Coldstream Blackbird 73Y is also represented with sons by Rachis and by LLB Freewheeler.

For some 28 years the DSK programme has produced larger framed well-muscled Angus with structural soundness. This has resulted in producing major results in all shows including all east coast Royal shows, sales, feed trials and carcass competitions. At the 2015 Sydney show, DSK missed Grand Champion purebred carcass by one half of a point scoring 93 points with a pure Angus steer sired by resident DSK walking sire, Kansas Upward G198 who continues to be a calving ease specialist and has been used as our heifer joining sire for the past 3 years without incident. His progeny are moderate, easy doing with great muscle expression and capacity.

**Young Dale Xcaliber 32X** is the next exciting sire that we will be bringing forward with his first progeny already weaned and topping our next group of male and female calves. This exciting new Canadian sire is the sire of the recently awarded Grand Champion Pen of 3 Bulls at Denver National Stock Show 2016.



# Canada, WA, NSW & USA



Sourcing the best genetics we can find worldwide that will survive, breed & maintain efficient, sound, high yielding & fertile beef producers in Australia's tough climates.



Coldstream Lady Heather 92S



Coldstream Blackbird 73Y



Monterey Duchess U3



Remitall H Rachis 21R



Youngdale Xcaliber 32X



LLB Freewheeler

DBRL 03M Titan 4T





# DSK Homebred Steers - Bred the SAME as DSK Bulls



The Best of Both Worlds

DSK purebred Angus strs



DSK purebred Charolais strs

**Star Lot**  
Stud Sire

**Lot 6**  
DSK RR Longshot L40 (AI) (ET)

Pure Canadian



**23<sup>rd</sup> Annual Bull Sale,**  
**1<sup>pm</sup> 11<sup>th</sup> August 2016**  
**Gunnedah Saleyards**

DSK Angus and Charolais: Chris Knox and Helen Alexander  
Borah Station, Rocky Glen, Coonabarabran NSW 2357  
Ph: (02) 6842 9101 - 0427 600 278  
E: [dskangusandcharolais@westnet.com.au](mailto:dskangusandcharolais@westnet.com.au)