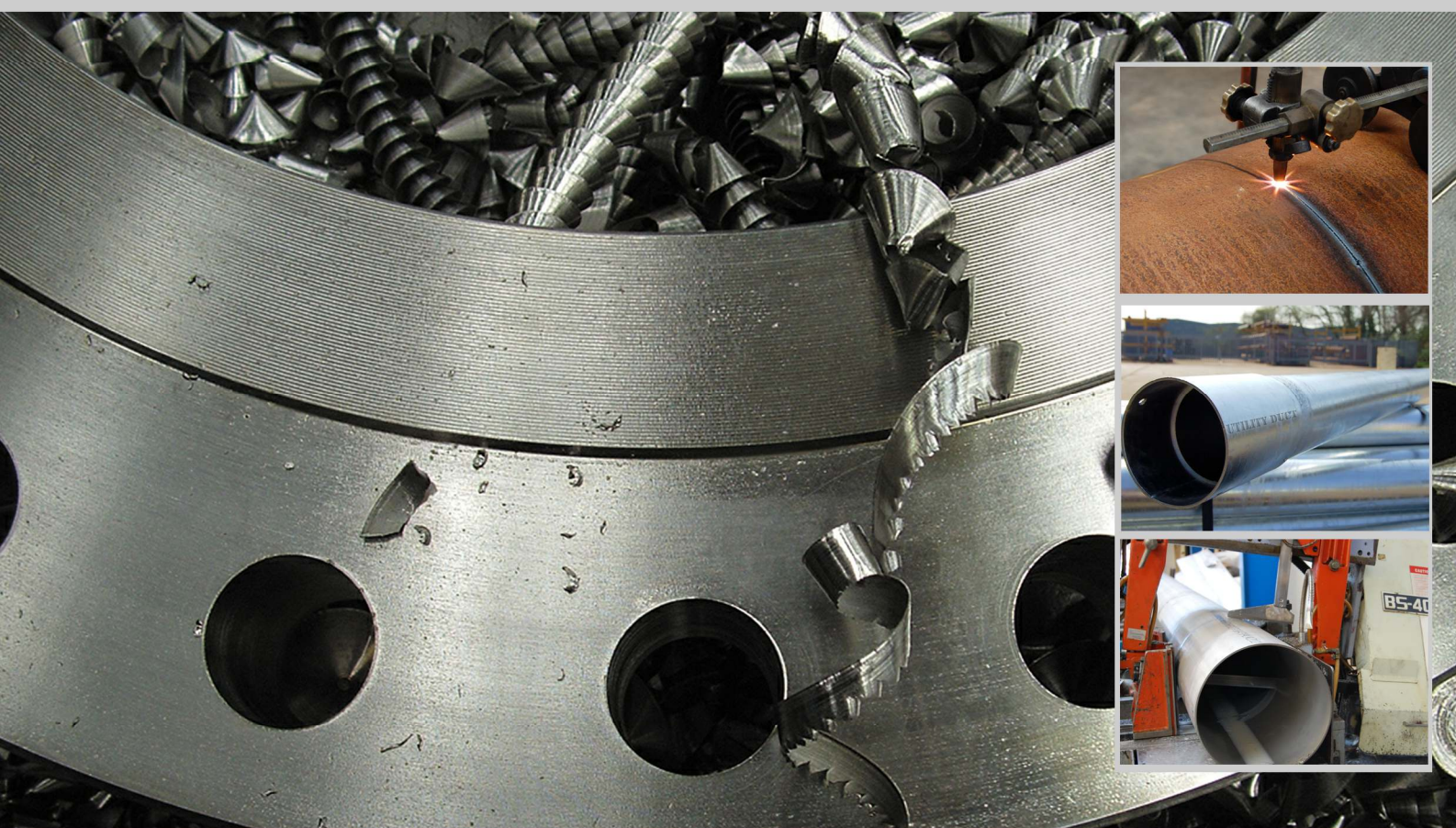




Tube & Steel Supplies Ltd

Stockists & Distributors of Quality Tube, Fittings & Flanges

Service
Getting it right. First Time. On time
Quality Innovation
Everytime.



Product Guide 2013



Tel: 01633 283283 Fax: 01633 283282

Email: sales@tsslimited.co.uk

 www.tubeandsteel.com



Tube & Steel Supplies Ltd

Stockists & Distributors of Quality Tube, Fittings & Flanges



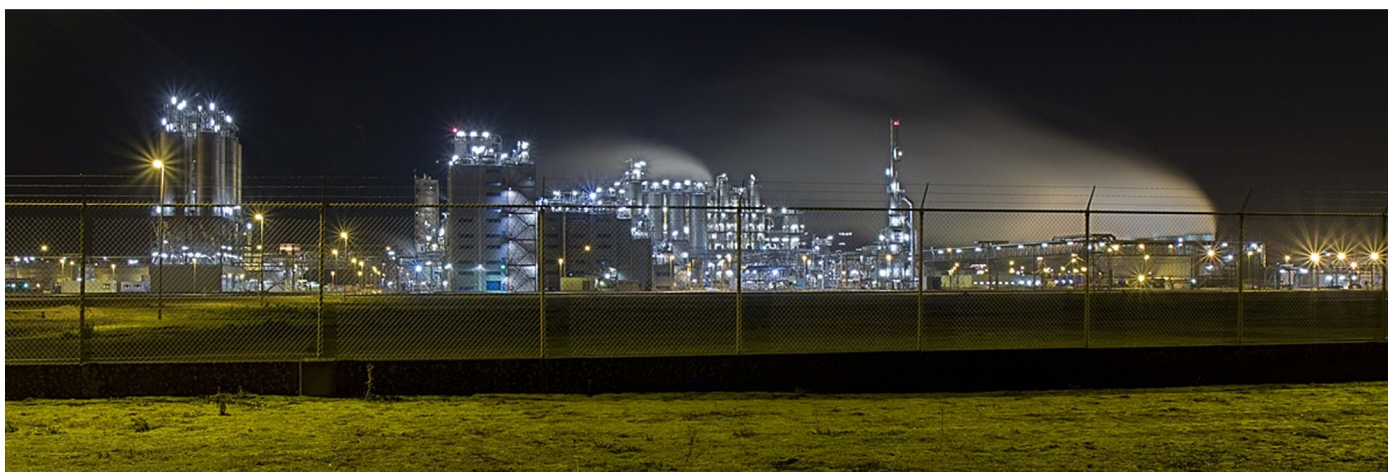
Introduction

Tube & Steel Supplies Ltd was formed in 1999 to provide a quality service to fulfil the requirements of all users of steel pipeline equipment. TSS is now firmly established supplying quality tubes and associated products and services to the pipework fabrication, petrochemical, process plant installation and maintenance, civil & general engineering industries both in the UK and overseas.

Talking tubing?..

Talk to us!

TSS continually reviews and updates its systems & services to ensure that it remains able to satisfy the ever changing needs of its customers in the national and international marketplace.



Quality

Our quality control starts with vetting our suppliers carefully, continues through all processes and ends up with the inspection of the finished order. The company has made considerable investments in its quality control facilities and assurance techniques.

In recognition of TSS achievements and on-going commitment to quality the company has been awarded approval to BS EN ISO9001:2000.

Tube & Steel Supplies Ltd continues to develop through its people, and the desire to provide a quality service to each of its customers, this commitment is as strong today as it was when the company formed. It is this philosophy which will guarantee the continued success of the company into the future.



Tube & Steel Supplies Ltd

Stockists & Distributors of Quality Tube, Fittings & Flanges



Tubes & Pipes

Hot Finished Seamless

HFS tubing can be used in a variety of applications across many diverse industries including: Construction, agriculture, industrial equipment, machinery, mining, energy, drilling and transportation.

HFS is also ideal for machining as it is readily available in large diameters and heavy wall thicknesses.

EN10297 E235 (supercedes DIN 2448/1629 ST37.0) : EN10297 E335 (supercedes DIN 2448/1629 ST52.0) : EN10210 S355 J2H (supercedes DIN 2448/1629 ST52.3N): Normalised & Charpy impact tested for structural and special applications.



Cold Finished Seamless (Mechanical & Hydraulic)

CFS (also referred to as CDS) is commonly used in applications requiring high strength and offers tight tolerances. It also has stronger physical properties compared to other mechanical tubing and is often used in hydraulics (EN10305-4 E235+N).

All tubes are eddy current tested and are marked with size and specification.

The tubes are also protected internally and externally with oil, which provides temporary protection against oxidation when undercover.

EN10305-1 2002 E235+C: EN10305-4 E235+N Hydraulic: Other grades are available on application



API Seamless & Welded Linepipe

Our linepipe is primarily for use in conveying gas, water and oil in both the oil and natural gas industries. Both seamless and welded tubes are available and we can offer plain-end, threaded-end, and bevelled-end pipe.

Our linepipe is pressure tested to 1000psi as standard.

ASTM A106 Grade B: ASTM A333 Grade 6 : ASTM A335: API 5L Grade B



ERW (Electric Resistance Welded)

Our ERW (Electric Resistance Welded) precision tube stock consists of round, rectangular and square sections in finished states including Flo-Coat, Pre-Galv & self colour.

EN 10305-3 E220





Tube & Steel Supplies Ltd

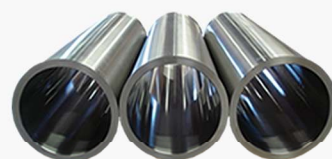
Stockists & Distributors of Quality Tube, Fittings & Flanges



Tubes & Pipes

Hollow Bar

Our Hollow Bar stock typical ranges between 30-250mm OD, other sizes out of this range are available on request. Hollow Bar is a machinable steel tube, and widely used by engineers for turning for many industries, such as industrial roller manufacturing.



EN10255 (BS1387)

BS 1387:1985 has been superseded by the European standard EN 10255:2004.

Our EN10255 tubing is one of our most popular products as it has many applications such as heating, ventilation, ducting and many more.

Available in both hot and cold forms, EN10255 is suitable for threading, bending and welding. Finishes available include self colour, red primed and galvanised.

Both plain ended material and screwed and socketed are held in stock.



Dom Mechanical

DOM mechanical precision tubing (Drawn Over Mandrel) is very similar to Cold Finished Seamless in appearance and is often used as an alternative. Generally, tolerances are tighter in this precision tube and is sometimes preferred by engineers.

It is manufactured from high quality flat rolled steel which is formed, electric welded and fully normalised with the inside and outside welding flash removed during the process. Its inherent precision is achieved when the tube is cold drawn over a mandrel to form a product with substantially improved tolerances, surface finish, increased hardness and good machinability.

EN10305-2 2002 E235+C



Non-Ferrous (Stainless Steel, Aluminium & specials)

TSS supply a variety of Non-Ferrous products. Our tube and pipe range includes the most popular grades of material in various finishes for many applications and industries including off-shore oil & gas installations, chemical & petrochemical plant installations, food processing equipment, heat exchangers, balustrading, marine applications etc.

Accompanying fittings and flanges are also available.





Tube & Steel Supplies Ltd

Stockists & Distributors of Quality Tube, Fittings & Flanges



Fittings & Flanges

Butt Weld Fittings

To compliment our extensive range of Tube & Pipe, TSS also offer comprehensive stock of weld fittings such as Elbows, Reducers, Sockets, Caps & many more. Specifications include: ASTM A234 WPB; ASTM A420 WPL6; BS1965 & BS1740 (EN10241). All fittings are compatible with all ANSI pipe sizes. Fittings can also be formed to meet custom requirements on request.



Forged Fittings

3000lb & 6000lb screwed & socket weld fittings, outlets and swaged nipples are also available from stock ready for next day delivery. These products are available in ASTM A105N in both self colour and hot dip galvanised.



Flanges & Gaskets

TSS keep both Flanges and accompanying Gaskets in stock, ready for use with all compatible sizes in our pipe range. Flange types stocked include; Slip-on plate, Weld-neck, Socket Weld, Screwed, Bossed & Blind. TSS can also supply specialist flanges that are drilled specifically for custom orders. Gaskets are available to suit all sizes. Materials include; BS4504 (forged & plate), BS10 (forged & plate) & ASA (forged).



Malleable Iron Fittings

Our malleable pipe fittings are available in both black and galvanised finish to British Standard BS143 banded and European standard EN10142. Fittings stocked include Elbows, Tees, Sockets, Bushes, Plugs, Unions and many more. A full malleable iron stock range brochure is available to download from www.tubeandsteel.com





Tube & Steel Supplies Ltd

Stockists & Distributors of Quality Tube, Fittings & Flanges



Fittings & Flanges

Valves

Valves come in a variety of material grades for a number of different applications. TSS are able to offer a full range of products for most flow control applications.



Fixings & Ancilleries

We offer various ancillary items to accompany our tube range - these include Munsen Rings, Nuts, Bolts, Washers & a range of clamps available on request.



Brochures & Information

www.tubeandsteel.com



Available to download online.



Tube & Steel Supplies Ltd

Stockists & Distributors of Quality Tube, Fittings & Flanges



Stainless Steel & Galvanised Handrail Systems

Galvanised Handrail System (inc. DDA range & free standing roof system)

The simple effective engineering principle of the TSS fitting is the foundation of the most versatile tube connection system available. TSS fittings are malleable iron castings manufactured to the requirements based on EN 1562-1997. A range of fittings to suit five sizes of tube are available. A simple hexagonal key is the only tool required to create a strong, rigid joint. A recessed set screw, tightened by the hexagon key, firmly locks the tubing into the fitting.

In addition to standard finishes (self colour, galvanised), tube, fittings and accessories can be supplied polyester/powder coated in a range of BS and RAL colours including the DDA compliant 'Warm to touch' coating.

Please visit our downloads page at www.tubeandsteel.com for further information.



Stainless Steel Handrail & Balustrade System

Tube & Steel Supplies Ltd are pleased to offer our own brand of Premium Stainless Steel Architectural Systems and Components. Our system provides complete and elegant solutions for all standard railing, balustrade and architectural requirements. The TSS system is completely modular and does not require any welding, grinding or polishing at the site.

The TSS range provides a modular railing and Balustrade system based on interchangeable components. Our system offers a wide range of flexibility to design a professional and secure railing.

TSS railing and balustrades are installed in thousands of locations worldwide including:

Airports
Shopping Malls
Office Buildings

Residential Projects
Public Parks

TSS Products are available in AISI 304 & AISI 316 in a Satin finish.





Tube & Steel Supplies Ltd

Stockists & Distributors of Quality Tube, Fittings & Flanges



Bespoke

Gates & Railings

Gates

TSS offer a wide selection of single, side gates and double gates. We manufacture from the highest quality materials and our gates come complete with fittings such as adjustable hinges, drop bolts and latch bolts. Our customers can choose from a variety of locking systems and customise gates and railings by choosing from a variety of headers and decorative infill designs.



Railings

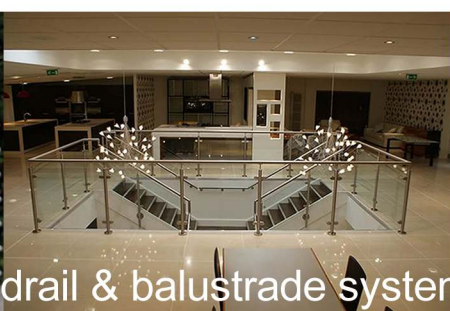
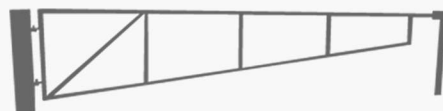
As with our gates, we use the highest quality material to manufacture bespoke railings in-house and specifically to our customers specification. There are many design templates to choose from, and TSS are happy to assist from the initial assessment, design, manufacture and installation.



Barriers

TSS also offer a wide range of manual swing-arm barriers for commercial & industrial applications. Each barrier is tailor made in-house to specific requirements. Installation is an available option.

We offer a free of charge on-site survey for local areas.



TSS Stainless steel handrail & balustrade systems



Tube & Steel Supplies Ltd

Stockists & Distributors of Quality Tube, Fittings & Flanges



General Steel

Hollow Section (Circular, Square & Rectangular)

Hollow Sections are generally available as RHS (Rectangular Hollow Section), SHS (Square Hollow Section) & CHS (Circular Hollow Section) and can be sourced in both Hot and Cold Formed. Section sizes range from 20mm to 610mm as standard, larger sections can be manufactured.



Merchant Bar (Angles, Flats, Rounds & Squares)

A range of Merchant Bar is available from TSS, including all the general steels associated with structural and mechanical use. Solids are usually provided in 3 - 6mtr lengths. We also offer a range of engineering bright bar products.



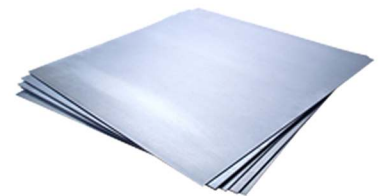
Structural Steels (Beams, Columns & Channel)

Used extensively in the construction industry, these structural steels are the available cut to length of your choice. All sections can be supplied self-colour or primer painted.



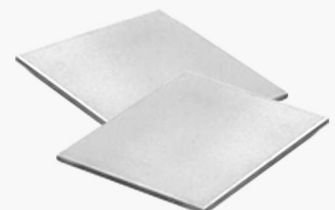
Flat Products

Our sheets are generally available with a thickness ranging from 0.8mm - 3mm whether you requirement is mild steel, galvanised or coated. TSS offers a shearing service with this product.



Plates & Profiles

We offer a wide range of mild steel plates in various standard sizes. In addition, we provide profile plates cut to specific sizes.





Tube & Steel Supplies Ltd

Stockists & Distributors of Quality Tube, Fittings & Flanges

Services

Cutting

Fully automated band saws processing pipes, beams, angles & solid bars up to 406.4mm in diameter. For larger sections we offer a flame cutting service. Mitre cuts are also available.



Welding & Fabrication

TSS offer a wealth of experience in supplying the needs of the Civil & Construction industry with various fabrication services both in-house and on-site.



Galvanising

Hot dipped galvanising is available on request. With access to baths up to 15.2mtr x 1.7mtr x 2.65mtr and to standard BS EN ISO 1461:2009, this is a popular option for many customers.



Threading

Our threading machines are capable of processing pipes from 3/8" up to 4"NB quickly in order to meet deadlines. All threads are to BSPT or NPTT as standard.





Tube & Steel Supplies Ltd

Stockists & Distributors of Quality Tube, Fittings & Flanges



Shot Blasting & Painting

TSS can offer a third party shot blasting and painting service to accompany all steel orders. Specifications available on application.



Powder & Plastic Coating

A wide range of BS and RAL colours are available for both powder and plastic coating. A service used especially for handrail applications in order to meet the requirements of the Disability Discrimination Act (DDA) warm to touch rail.



On-Site Services

TSS can provide, on request, on-site surveys & fitting services. Please contact a member of our sales team on 01633 283283 for further assistance.



International Export

TSS export internationally offering CFR, CIF, FOB and various other rates.

For all export enquiries, please contact exports@tsslimited.co.uk.

A chart containing all freight terms and their meanings are available to download from www.tubeandsteel.com



Tube & Steel Supplies Ltd

Stockists & Distributors of Quality Tube, Fittings & Flanges



Further information on all listed products is available on request including brochures and technical information.

Tel: 01633 283283 Fax: 01633 283282

Email: sales@tsslimited.co.uk

www.tubeandsteel.com

© Tube & Steel Supplies 2013

