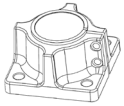




SUMMIT™ POST MOUNT GUIDELINES AND INSTALLATION INSTRUCTIONS

FOR MOUNTING ON CONCRETE FLIP FOR INSTRUCTIONS ON HOW TO INSTALL ON DECKING

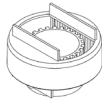
INDIVIDUAL COMPONENTS



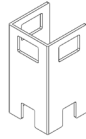
(1) Die Cast Mounting Plate w/ compression bushing



(1) 1 7/8" x 38" Galvanized Pipe (Schedule 40 or equivalent)



(1) 4" 2-Piece Adjustable Socket Patent # 7398961B2



(1) Summit™ Wrap Doubles wall thickness for increased screw engagement



(4) Screws 3/4" Pan Head Square Drive

BEFORE YOU START!

Please consult your local codes for specific requirements on guard railing applications.

STEP 1:

Lay out all of your post locations. Be certain the locations of your posts have enough reinforcement below the surface you are attaching them to. Concrete must be a min of 4" thick; 4-3/4"+ is recommended for applications using certain fasteners.

STEP 2:

Mark the holes to be drilled in the four corners of the mounting plate. For the best results, use the mounting plate as your template.

STEP 3:

Drill the holes level and install the fasteners for your specific application. Be certain to choose a 3/8" fastener and follow the manufacturer's instructions.

STEP 4:

Attach post mount mounting plate with the concrete fasteners. Tighten fasteners to base securely but do not over tighten.

STEP 5:

Attach the socket's internal piece (hub) to the pipe at the proper height. For 42" railing height secure hub 3/4" below the top of the pipe. For 36" railing height secure top of hub 6 3/4" below top of pipe or 31 1/4" off the surface (deck). Use a #17 or 11/64 drill bit to drill a pilot hole, then use included screw to fasten. *see figure 1.*

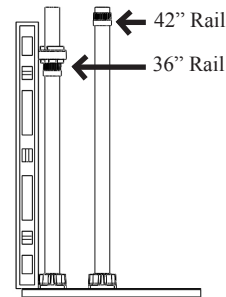


figure 1.

STEP 6:

Plumb post by placing edge of level against flat vertical surface of the mounting plate (*see figure 1*), opposite end of level against outer piece of Post Socket while holding above hub. Lower and lock the teeth together after plumbing adjacent post sides.

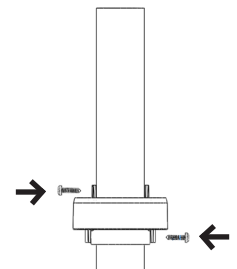


figure 2.

STEP 7:

Place screws in opposite sides of socket, one higher and one lower (*see figure 2*).

STEP 8:

Attach Summit wrap to post socket (*see figure 3*). Be certain the sides of the wrap are in line with surface of the post that the brackets will attach to.



figure 3.

STEP 9:

Slide 4" post over Summit wrap while holding it to the socket. If your installation requires bracket reinforcement on the bottom rail as well, install 2nd Summit wrap (sold separately) over post base prior to lowering the 4" post to the surface.

HELPFUL HINT 1:

When securing brackets to post, first install screws in the bracket on the side closest to the center of the Summit wrap (not to the void side of the wrap).

HELPFUL HINT 2:

If installing Low Voltage lighting, drill holes in the posts prior to attaching rails to railing brackets.

HELPFUL HINT 3:

If using railing brackets other than Summit, layout railing section with brackets and measure to be certain holes in your brackets will make contact with Summit wrap, adjust height if necessary.



SUMMIT™ POST MOUNT GUIDELINES AND INSTALLATION INSTRUCTIONS

FOR MOUNTING ON DECKING

FLIP FOR INSTRUCTIONS ON HOW TO INSTALL ON CONCRETE

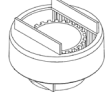
INDIVIDUAL COMPONENTS



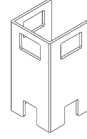
(1) Die Cast Mounting Plate w/ compression bushing



(1) 1 7/8" x 38" Galvanized Pipe (Schedule 40 or equivalent)



(1) 4" 2-Piece Adjustable Socket Patent # 7398961B2



(1) Summit™ Wrap Doubles wall thickness for increased screw engagement



(4) Screws 3/4" Pan Head Square Drive

BEFORE YOU START!

Please consult your local codes for specific requirements on guard railing applications.

STEP 1:

Lay out all of your post locations. Be certain the locations of your posts have enough reinforcement below the surface you are attaching them to. Decking must have a min. of 3" of blocking below the actual deck surface (wood, vinyl, composite, etc). Do not layout a post directly above a joist. *see figure 4.*

STEP 2:

Mark the holes to be drilled in the four corners of the mounting plate. For the best results, use the mounting plate as your template.

STEP 3:

Drill the holes level and install the fasteners for your specific application. Use Waymark's Universal Hardware Kit (sold separately) PMHARDKIT. Use a 7/16" diameter drill bit and drill these holes through the deck surface and blocking. *see figure 4.*

STEP 4:

Install Post Mount base to the surface. Line up the compression plate with the included 3/8" bolts and tighten firmly to the surface.

STEP 5:

Attach the socket's internal piece (hub) to the pipe at the proper height. For 42" railing height secure hub 3/4" below the top of the pipe. For 36" railing height secure top of hub 6 3/4" below top of pipe or 31 1/4" off the surface (deck). Use a #17 or 11/64 drill bit to drill a pilot hole, then use included screw to fasten. *see figure 1.*

STEP 6:

Plumb post by placing edge of level against flat vertical surface of the mounting plate (*see figure 1*), opposite end of level against outer piece of Post Socket while holding above hub. Lower and lock the teeth together after plumbing adjacent post sides.

STEP 7:

Place screws in opposite sides of socket, one higher and one lower (*see figure 2*).

STEP 8:

Attach Summit wrap to post socket (*see figure 3*). Be certain the sides of the wrap are in line with surface of the post that the brackets will attach to.

STEP 9:

Slide 4" post over Summit wrap while holding it to the socket. If your installation requires bracket reinforcement on the bottom rail as well, install 2nd Summit wrap (sold separately) over post base prior to lowering the 4" post to the surface.

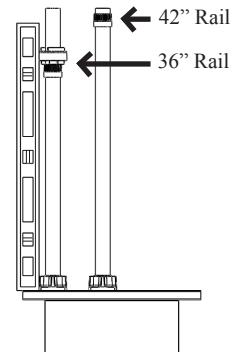


figure 1.

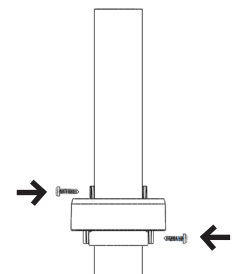


figure 2.



figure 3.

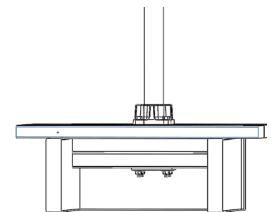


figure 4.

HELPFUL HINT 1:

When securing brackets to post, first install screws in the bracket on the side closest to the center of the Summit wrap (not to the void side of the wrap).

HELPFUL HINT 2:

If installing Low Voltage lighting, drill holes in the posts prior to attaching rails to railing brackets.

HELPFUL HINT 3:

If using railing brackets other than Summit, layout railing section with brackets and measure to be certain holes in your brackets will make contact with Summit wrap, adjust height if necessary.