

Lightweight Racing Hose

Construction: smooth bore, lightweight synthetic rubber interior with (black) nylon woven overbraid

Application: For gasoline, diesel fuel, lubrication oils, and water. Suitable for most "taper" type hose ends.

Operating Temperature Range: -30 f to +300 f (-35 c to +150 c).

[Link to suitable hose end fittings](#)

Part Number	Hose I.D. (inch)	Hose O.D. (inch)	Max. Oper. Pressure (psi)	Min. Burst Pressure (psi)	Min. Bend Radius (inch)	Vacuum Service (in/Hg)	Weight Per Foot (lbs.)
AHL-4	.225"	.44"	250	500	2.0"	27	.08
AHL-6	.350"	.55"	250	500	2.25"	27	.10
AHL-8	.445"	.65"	250	500	3.5"	27	.12
AHL-10	.565"	.80"	250	500	4.0"	27	.17
AHL-12	.695"	.94"	250	500	4.5"	27	.22
AHL-16	.880"	1.15"	250	500	5.5"	22	.28
AHL-20	1.13"	1.41"	200	400	8.0"	22	.32

Lightweight Hose Information

From the late 1990's on there has been an increasing call for lightweight hose. With this, many manufacturers have introduced new hose and fitting products. This is good news for sponsored racing teams (unlimited budgets) searching for something lighter/better, however, the cost of these products (often 2 to 5 times higher) put them out of reach for the average user. The other issue is the lack of compatibility between brands and systems - most require special equipment required for assembly. One of the few "compatible" products on the market is Aeroquip "Startlite" hose, which can be used either with "crimp" type or more common "taper-swivel" hose ends. Unfortunately the down side here is the price - again 2-3 times the price of typical stainless racing hose. With all this in mind, our latest hose product addresses the above issues and features; weight similar to the high dollar brands, compatibility with industry standard "taper-swivel" hose ends, and is easy to cut and assemble (no more bloody fingers) and all at a sensible price.

Internet Hose Pricing Specials

Below we have listed pricing on the popular hose types, and sizes, we normally stock. Pricing benefits purchasing in longer bulk lengths. Make sure to tell your sales associate you want our "internet bulk hose" pricing.

Lightweight Hose Pricing \$2019

Hose Size I.D.	Part #	Price \$ 1-14 feet	Price \$ 15-29 feet	Price \$ 30 > feet	Price \$ 50 > foot
-4 (.22")	AHL-4	\$5.85	\$5.55	\$5.25	\$4.95
-6 (.35")	AHL-6	\$6.25	\$5.95	\$5.65	\$5.30
-8 (.44")	AHL-8	\$7.05	\$6.70	\$6.35	\$6.00
-10 (.56")	AHL-10	\$7.75	\$7.35	\$7.00	\$6.60
-12 (.69")	AHL-12	\$9.50	\$9.00	\$8.55	\$8.05
-16 (.88")	AHL-16	\$13.65	\$12.95	\$12.30	\$11.60
-20 (1.13")	AHL-20	\$22.45	\$21.85	\$20.55	\$19.90



We assemble custom hoses.
Call for quote.





Lightweight Fuel Specific Hose

Construction: smooth bore lightweight synthetic rubber interior with fluorocarbon based liner, single stainless braid reinforced, black nylon woven exterior w/blue trace.

Application: For gasoline, diesel fuel, bio-diesel, E85 and other ethanol based fuels Suitable for most "taper" type hose ends.

Operating Temperature Range: -30 f to +300 f (-35 c to +150 c).

Part Number	Hose I.D. (inch)	Hose O.D. (inch)	Max. Oper. Pressure (psi)	Min. Burst Pressure (psi)	Min. Bend Radius (inch)	Vacuum Service (in/Hg)	Weight Per Foot (lbs.)
AHL-6F	.350"	.55"	300	500	2.25"	27	.10
AHL-8F	.445"	.65"	300	500	3.5"	27	.12
AHL-10F	.565"	.80"	250	500	4.0"	27	.17

[Link to suitable hose end fittings](#)

Fuel specific hose designed to handle modern fuels and high fuel system pressures. Hose incorporates a synthetic Fluorelastomer liner making it compatible with racing fuels as well as ethanol based fuels (E85 and higher percentages), diesel/bio-diesel. Incorporated liner protects against hose deterioration that leads to fuel permeation (gas smell) and dry hardened hose. Hose is finished in an attractive black nylon braid with gray trace.

- ◆ Certified for use with E-85, diesel, bio-diesel, ethanol and alcohol based-fuels
- ◆ Recommended for use in fuel-injection applications
- ◆ 4 ply light weight construction with a thin inner wall synthetic (Flourelastomer) liner that protects against hose swelling and deformation at high temperatures.
- ◆ No more sour gas bleeding brittleness and premature degradation. Hose was developed and SAE tested to eliminate high levels of fuel permeation under extended and extreme conditions.
- ◆ 40% lighter than stainless braided racing hose.
- ◆ Hose is reinforced with a lightweight stainless steel braid for use in vacuum applications.
- ◆ Exceeds all SAE-30R9 specifications for superior pressure, strength and support stability tests.
- ◆ AN compression style reusable fittings recommended. Not to be used with AN cutter style reusable fittings. Hose should not be submerged in fuel or used inside fuel tanks

Internet Hose Pricing Specials

Below we have listed pricing on the popular hose types, and sizes, we normally stock. Pricing benefits purchasing in longer bulk lengths. Make sure to tell your sales associate you want our "internet bulk hose" pricing.

Lightweight Fuel Specific Hose \$2019

Hose Size I.D.	Part #	Price \$ 1-14 feet	Price \$ 15-29 feet	Price \$ 30 > feet	Price \$ 50 > foot
----------------	--------	--------------------	---------------------	--------------------	--------------------

-6 (.35")	AHL-6F	\$7.80	\$7.40	\$7.00	\$6.60
-8 (.44")	AHL-8F	\$8.90	\$8.45	\$8.00	\$7.55
-10 (.56")	AHL-10F	\$10.30	\$9.80	\$9.25	\$8.75



We assemble custom hoses.
Call for quote.





Aeroquip Startlite Racing Hose

Construction: AQP elastomer inner tube (black) Nomex/Kevlar weave cover w/red trace.

Application: For gasoline, diesel fuel, lubrication oils, and water. Suitable for most "taper" type hose ends.

Operating Temperature Range: -45 f to +300 f (-43 c to +150 c).

[Link to suitable hose end fittings](#)

Part Number	Hose I.D. (inch)	Hose O.D. (inch)	Max. Oper. Pressure (psi)	Min. Burst Pressure (psi)	Min. Bend Radius (inch)	Vacuum Service (in/Hg)	Weight Per Foot (lbs.)
FBU400	.220"	.43"	200	400	2.0"	20	.05
FBU600	.350"	.55"	200	400	2.25"	20	.08
FBU800	.440"	.65"	200	400	3.5"	20	.09
FBU1000	.560"	.80"	200	400	4.0"	20	.14
FBU1200	.690"	.93"	200	400	4.5"	20	.16
FBU1600	.880"	1.15"	200	400	5.5"	20	.19
FBU2000	1.13"	1.41"	200	400	8.0"	20	.25

Startlite Hose Information

Aeroquip Startlite, being one of the first offerings in the lightweight hose market, is still one of the best. One of the few "compatible" products on the market is Aeroquip "Startlite" hose, which can be used either with newer "crimp" type, or more common "taper- swivel" hose ends. Aeroquip's popular lightweight racing hose is up to 45% lighter than steel braided hose and combines Aeroquip's patented elastomer smooth bore inner tube with a abrasion-resistant, fire-retardant Nomex/Kevlar® cover. Recent price reductions of up to 20% puts this pro-racer hose within the budget of average end users.

Internet Hose Pricing Specials

Below we have listed pricing on the popular hose types, and sizes, we normally stock. Pricing benefits purchasing in longer bulk lengths. Make sure to tell your sales associate you want our "internet bulk hose" pricing.

AQP Startlite Hose Pricing \$2019

Hose Size I.D.	Part #	Price \$ 1-14 feet	Price \$ 15-29 feet	Price \$ 30 > feet
-4 (.22")	FBU0400	\$7.90	\$7.50	\$7.10
-6 (.35")	FBU0600	\$8.85	\$8.40	\$7.95
-8 (.44")	FBU0800	\$10.15	\$9.65	\$9.15
-10 (.56")	FBU1000	\$11.55	\$10.95	\$10.40
-12 (.69")	FBU1200	\$13.50	\$12.85	\$12.15
-16 (.88")	FBU1600	\$18.65	\$17.75	\$16.80
-20 (1.13")	FBU2000	\$24.75	\$23.50	\$22.30



We assemble custom hoses.
Call for quote.



Accessories & Tools

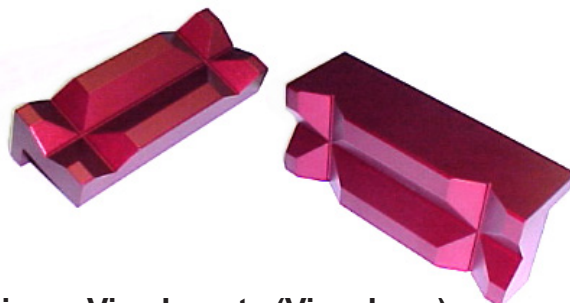
The right accessory, or tool, will always simplify a job; we stock a variety of products to aid assembly and make for a "clean" installation.



Aluminum Hose Finishing (Pro) Clamps

-AN size	I.D.	part #	price \$
-6AN	5/8"	PRO6	\$3.95
-8AN	11/16"	PRO8	\$4.25
-10AN	7/8"	PRO10	\$4.50
-12AN	1"	PRO12	\$5.00

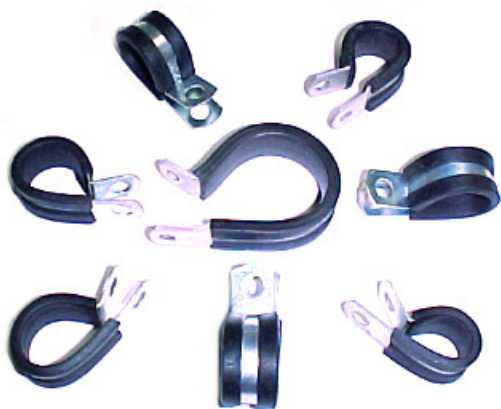
Hose end finishing clamps (Pro Clamps) add cosmetic appeal and keep braided hose from fraying when used with push-on hose connections. Aluminum housing retains a stainless worm-drive clamp. Supplied in BLACK or RED.



Aluminum Vice Inserts (Vice Jaws)

Sizes	part #	price \$
Pair (2)	AVJ1R	\$15.75

Special vice inserts featuring extra strong magnets, protect expensive hose ends during assembly. Here is another case of, "having the right tool makes all the difference." Usually supplied in RED OR BLACK. Now with stronger magnets!



Aluminum Cushion (Adel) Clamps

-AN size	I.D.	part #	price \$
-4AN	3/8"	AC375	\$0.85
-6AN	9/16"	AC625	\$0.70
-8AN	11/16"	AC687	\$0.70
-10AN	3/4"	AC750	\$0.85
-12AN	1"	AC1000	\$0.95
-16AN	1 1/4"	AC1250	\$1.25

Aviation quality aluminum cushion (Adel) clamps help keep everything tidy and in place. Perfect for mounting hose or tubing where you need it and not in harms way.



Adjustable Aluminum Hose Wrench

Sizes	part #	price \$
-3 to -16	HW-AJ	\$44.50

Since it's adjustable, this wrench fits both attachment and assembly nuts on all brands and sizes between -3AN and -16AN sizes. This is the ultimate hose end tool!

Accessories & Tools (continued)



Aluminum Hose Wrenches

Description	part #	price \$
-4AN Wrench*/**	HW-4	\$11.25
-6AN Wrench*/**	HW-6	\$11.85
-8AN Wrench*/**	HW-8	\$13.40
-10AN Wrench*/**	HW-10	\$14.25
-12AN Wrench*/**	HW-12	\$15.25
-16AN Wrench**	HW-16	\$19.15
-20AN Wrench	HW-20	\$21.80
5 Wrench Set*	HWST-5	\$61.25
6 Wrench Set**	HWST-6	\$79.90

Traditional round hole style -AN wrenches are available as singles, or in sets. Wrenches are designed to tighten the female attaching "B-nut" connection without damaging the finish. Corresponding size is machined at head. Color varies depending on size.



Assembly Wrench Set

Description	part #	price \$
Assy Wrench Set	HWSA	\$69.75

The perfect do-all -3AN to -20AN wrench set with both "B" nut and socket nut sizes and fit most major brand socket nuts for easy hose end assembly. Flip to the "B" nut side to connect to -AN male. Wrenches are finest quality, precision cut, anodized (red) aluminum. Note: -20AN size is "B" nut only.



Aluminum Hose Wrench Set

Sizes	part #	price \$
Set of 6	HWSE	\$47.50

Here's an economical 6 piece (-3, -6, -8, -10, -12, -16AN) hose wrench set made from 6061 aluminum alloy. Wrenches are designed to tighten the female attaching "B-nut" connection without damaging the finish. Usually supplied in RED.



Unicoil Hose Bender

Size	part #	price \$
-6 Hose 3/8"	AUC-375	\$7.95
-8 Hose 1/2"	AUC-500	\$7.50
-10 Hose 5/8"	AUC-625	\$7.95
-12 Hose 3/4"	AUC-750	\$8.95

Stainless steel Unicoil's allow you to configure custom bent lines using bulk straight hose. Hose bends of up to 90 degrees* can be accomplished using a single coil and two coils can be combined for up to a 180 degree*. The incorporated spring minimizes hose kinking and metal spine permanently holds its bend. We are continually finding uses for these handy products. *Note: maximum degree of bend is determined by flexibility of hose.

Accessories & Tools (continued)



Silicone self-bonding, fire & water resistant tape for sealing end cuts.

FireFlex silicone jacketed fiberglass sleeving is the choice of professionals in motor racing and other industries where protection from constant temperatures approaching 500°F is mandatory. In aviation, almost every engine - turbine, turboprop or piston; civilian and military - uses FireFlex to protect critical hoses and wiring in the event of an engine compartment fire.

FireFlex fiberglass/silicone sleeving is engineered to protect plumbing (hoses), cables and wire harnesses from damage due to exposure to extreme heat, open flame, molten splash and welding sparks. The thick, high temperature fiberglass sleeve is jacketed with a non-permeable, heavy silicone coating that is flexible enough to follow tight radius curves, resists all automotive chemicals and solvents, and provides a substantial level of abrasion and puncture protection.

FireFlex is completely non-conductive, will not melt, delaminate, become brittle or support combustion under normal conditions, and provides a professional level solution to thermal protection needs in any application.

FireFlex Heat Sleeve (black)

Size	part #	price \$
-3T (1/4" ID)	FF-3T	\$2.95
-4T (3/8" ID)	FF-4T	\$3.10
-4 (1/2" ID)	FF-4	\$3.20
-6 (5/8" ID)	FF-6	\$4.05
-8 (3/4" ID)	FF-8	\$4.30
-10 (7/82" ID)	FF-10	\$4.85
-12 (1" ID)	FF-12	\$5.55
-16 (1 1/4" ID)	FF-16	\$6.05
-20 (1 1/2" ID)	FF-20	\$6.95

Additional price discounts apply for quantities over 30, 50 and 100 feet (each size). Diameters of up to 4" i.d. are available as special order (inquire with size requirement for price).

Silicone Bonding Tape (black)

Description	part #	price \$
36 foot roll	FFT-R	\$19.40
1 foot length	FFT-1	\$1.00

FIREFLEX SPECIFICATIONS:

Operating Temperatures: Minimum Continuous -65°F/-54°C, Maximum Continuous 500°F/260°C **Melt Temperature:** 2.048°F/1,120°C
Flammability Rating: Non Flammable **Recommended Cutting:** Scissor or Knife **Wall Thickness:** .072", **Abrasion Resistance:** Extermely High

Chemical Resistance: (1) No Effect, (2) Little Effect, (3) Affected, (4) More Affected, (5) Severely Affected

Aromatic Solvents (1), Alipahtic Solvents (1), Chlorinated Solvents (1), Weak Bases (1), Strong Bases (1), Salt Water (1), Hydraulic Fluid (MIL-H-5606) (1), Lubricating Oil (MIL-A-8243) (1), De-Icing Fluid (MIL-A-8243) (1), Strong Acids (2), Strong Oxidants (2), Esters/Keytones (1), UV Light (1), Petroleum (1), Fungus (ASTM G-21) (1), Salts (1).

Fire Foil High Temperature Heat Sleeve

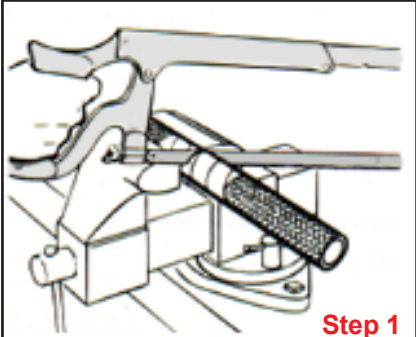
Size	part #	price \$
-3,-4 (3/8" ID)	320503	\$4.35
-6 (5/8" ID)	320506	\$5.20
-8 (3/4" ID)	320508	\$5.70
-10 (7/82" ID)	320510	\$6.15
-12 (1" ID)	320512	\$6.75
-16 (1 1/4" ID)	320516	\$7.65
-20 (1 1/2" ID)	320520	\$8.45



Fire Foil is a very lightweight fiberglass sleeve laminated to a mylarized aluminum surface that provides radiant heat protection to 800 degrees Fahrenheit. The mylar surface also resists abrasion and engine/brake fluids. Product is sold by the foot in size that corresponds with O.D. of -AN hose. Fire Foil is not expandable and should be slipped over hose prior to assembly. Alternatively the seem can be cut and sleeve can be used as a wrap being secured by tape or ties.

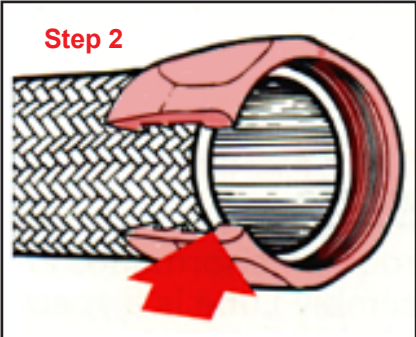
Fire Foil Heat Sleeve

Braided Type AN Hose End Assembly



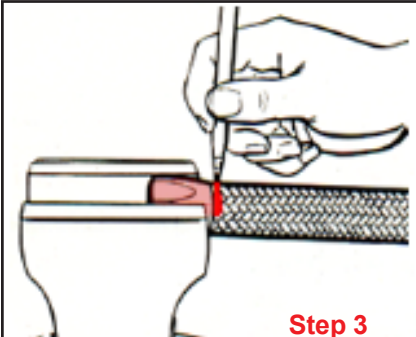
Step 1

Wrap hose tightly with tape at cutting point. Cut hose squarely to length using a fine tooth hacksaw, cable shears, or cut-off wheel. Remove tape being careful not to fray braid.



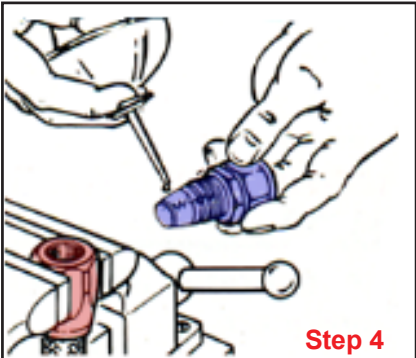
Step 2

Insert hose into socket with a twisting, pushing motion until the hose is positioned just short of where socket thread begins. It will be helpful to hold socket in a vice while inserting hose.



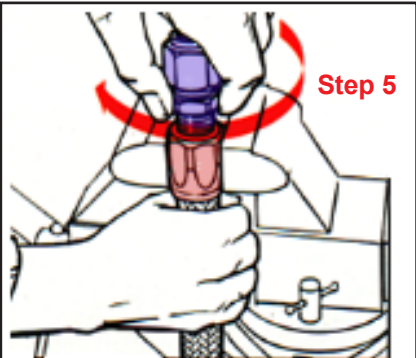
Step 3

It is important to mark hose at rear of socket with a marker or tape. This mark will later indicate if hose has "pushed out" during assembly.



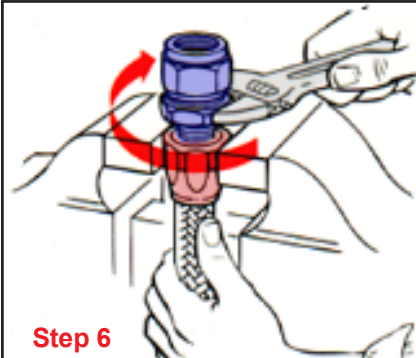
Step 4

Lubricate inside of hose and nipple thread liberally with S.A.E. 30 oil or specific hose assembly lube.



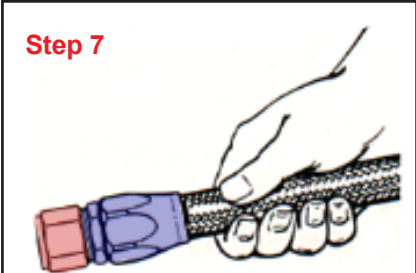
Step 5

Carefully insert nipple into socket end with a turning motion to engage threads while holding hose with other hand. Make sure hose does not push out of socket end (observe mark made in **step 3**). Continue threading by hand as far as possible making sure threads are properly mated.



Step 6

Complete assembly using a wrench while holding the hose in position. When assembled a small gap of .030" or less should exist between socket and nipple shoulder. It is an option to hold the nipple in the vise turning the socket and hose portion on with a wrench.



Step 7

Check assembled fitting; observe mark made in step 3 for evidence of push out. If available, proof test assembly to twice operating pressure. Always check assembly for leakage under normal operating conditions.

Other Information:

Most manufacturers -AN type hose ends and braided hose conform to an industry standard and are generally interchangeable.

Be careful not to confuse types of braided hose. Hose with Teflon interior can only be used with TFE type hose fittings - not the usual red/blue aluminum variety detailed here. The TFE hose/fitting system is common in smaller i.d. -3AN and -4AN sizes used in high pressure applications; -6 and -8 sizes exist, but are less common.

Depending on brand, the nipple portion of hose end will commonly be either "taper" or "cutter" design - assembly is similar.



We assemble custom hoses.
Call for quote.

