

BROKEN HEAD QUARRY
POLLUTION INCIDENT RESPONSE MANAGEMENT PLAN

EPA Lic 4860

Plan Prepared by D. Morris. General Manager 6th June 2013
Broken Head Quarry.

Reviewed By J. Ward Acting Manager 29th April 2016

This plan is prepared in accordance with the Protection of the Environment Operations Act 1997, the Protection of the Environment Legislation Act 2011 and the Protection of The Environment Regulation (General) 2009.

The objects of this plan are to :

- To ensure timely and comprehensive communication of any incidents to Relevant stakeholders.
- To identify, minimise and control any risk of a pollution incident.
- To ensure proper implementation of the plan by trained staff.
- To ensure regular reviewing & updating of the plan.
- To set out clear procedures to be followed in the unlikely event of a pollution incident.

Definition of Pollution Incident.

A pollution incident is an incident or set of circumstances where there is or is likely to be a leak, spill or other escape of a substance which would or is likely to result in pollution. It does not include those incidents which involve noise.

Note. Any pollution incident which is not deemed " trivial " must be dealt with in accordance with this plan.

CONTENTS.

1. Objectives of the Plan.
Definition of Pollution Incident.
2. Contents.
3. Potential pollution hazards within Broken Head Quarry.
Pre-emptive actions with regard to identified hazards:
4. Inventory of pollutants.
Aerial view of potential hazard locations. West side
5. Aerial view of potential hazard locations. East side.
6. Safety Equipment available at BHQ.
Contact details for all interested parties.
7. Contact Details cont.
EPA Notification Protocol.
8. EPA Notification Protocol cont.
Procedures to Minimise the Risk of Harm to Others.
9. Property Location Diagram.
10. Actions to be taken During or After a Pollution Incident.
Staff Training.
11. Intentionally Blank.

Potential Pollution Hazards within Broken Head Quarry.

- Fuels, Oils & Lubricants.
- Assorted mechanical workshop chemicals.
- Herbicides.
- Paints.
- Solvents.
- Flocculant.
- Coagulant
- Surface Water sedimentation ponds.
- Silt settling ponds.
- Dust.

Pre-emptive Actions with Regard to Identified Hazards.

All fuels, oils & liquid lubricants are stored in or on bunded areas. These bunded areas comply with AS 1940B 1993, AS 4452B 1997 AS 2507 1984.

Any handling of these goods is done by suitably competent and authorised personnel only.

Workshop Chemicals, pesticides, paints & solvents are in small quantities only, so pose no threat to the environment beyond our boundaries. Spill kits are located in both workshops & the container which houses the herbicides. All staff are trained in the use of the spill kits.

Flocculant is in powder form. Housed in a sealed container. There is no possibility of this substance becoming liquified to the extent that it would pose any threat to the environment

Coagulant is stored within the plant, above a large steel tank. Thus making it impossible to escape to the outer surrounds.

Surface water west side, is retained on-site. Holding dams with a capacity in excess of 8 megalitres catch all storm water run-off. All run-off passes through a series of sediment traps, then into our process dam. Should the holding capacity of the dams be tested, we pump the excess water through the plant, then to the east side silt pond, treating it as it discharges to the pond. After treating with flocculent, the resulting, clean water is released to our main dam on the east side. This dam has a holding capacity of 20 megalitres. Clean water is allowed to drain off this main dam towards the east, as required by the Dept of Planning and the NSW Office of Water.

Silt settling ponds. Silt from the wash process is pumped to silt ponds on the east side and treated as with surface water run-off

Dust is controlled to the best of our ability, by continuous use of a water cart on all roads in use on any given day. Re-establishing ground covers and rehab as soon as is practicable. Dust is monitored by independent laboratory analysis on a monthly basis. The results of any testing are uploaded to our web-site. brokenheadquarry.com.au

Page 4.

Inventory of Pollutants.

See MSDS master file in weighbridge office, or MSDS documents in holders at the door of each relevant storage area for details on all chemical pollutants.

Hard copies of relevant MS-DS sheets are attached to the hard copy of this document, on file in the office of the Quarry Manager.

Other pollutants:

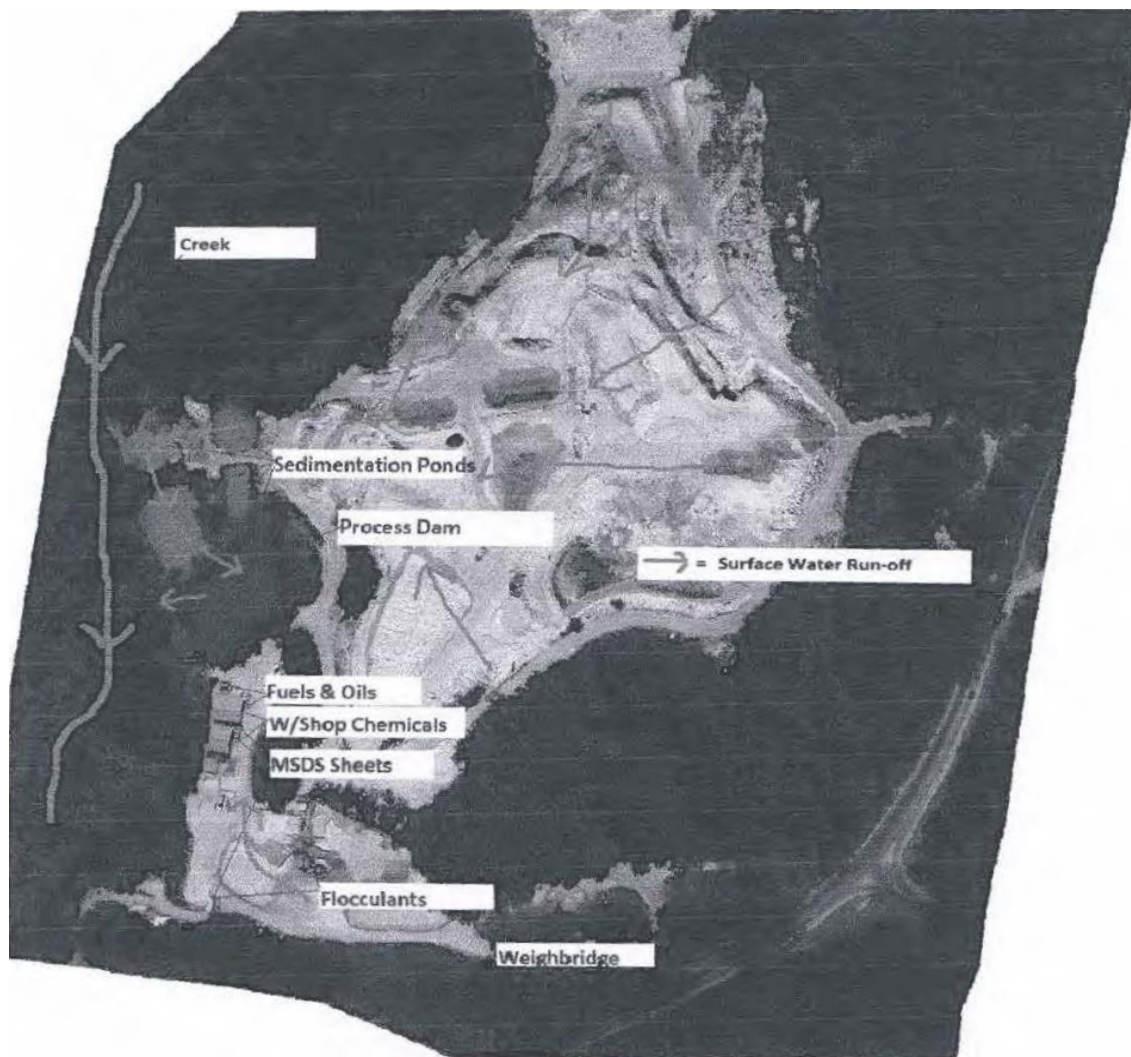
Surface storm water run-off.

Dust.

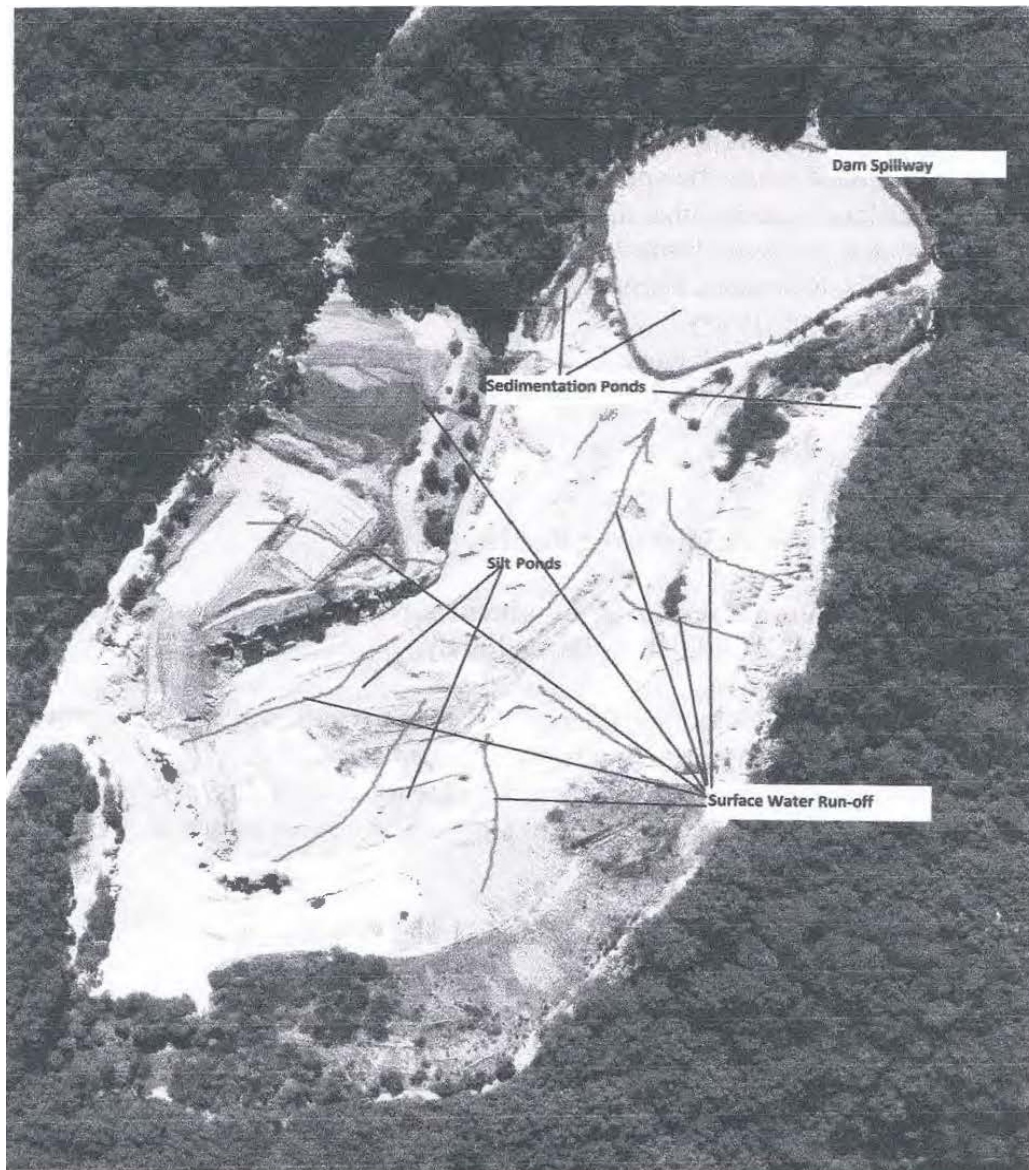
Noise.

Aerial views detailing locations of various pollutants

West Side.



East Side



Safety Equipment Available.

- Spill kits. These kits contain various absorbent capable products. Socks, Booms, Pads, Powders. The larger 240litr wheelie bin kits are located in the mechanical workshop and the Red container. Smaller mobile kits are available at the same location plus one carried in our water-cart, for emergency use.
- PPE equipment is available for all staff. All staff are trained and encouraged to use the appropriate PPE when handling the various hazardous materials that they sometimes do. PPE equipment available includes, but is not limited to: Masks, Hearing protection, Gloves, Overalls, Raincoats, Helmets. The wearing of correct PPE is mandatory at Broken Head Quarry.
- MSDS sheets for all hazardous materials held on site, are found at the entrance to each storage facility & a master copy at the weighbridge office.

Contact Details for all Interested Parties.

If the incident poses a serious & imminent threat to persons, property or the environment.....Call 000 ... immediately.

In the event of any Pollution Incident, other than trivial incidents; the following people or organisations must be informed immediately.

If it is possible to control & treat the incident without the aid of emergency services, this can be done. But relevant authorities must be informed immediately.

These include.

The EPA. 131555
EPA local office. Grafton 02 6640 2500

Workcover NSW. 131050

The Byron Shire Council 02-66-267-000

NSW Dept of Planning. 02-9228-6403

NSW Dept of Primary Industries. 02-67-388-509

NSW Office of Water. (If relevant.) 1800-353-091

BHQ. Quarry Manager. 02-66-854-573. mob 0429-458-852

BHQ. Sales Office. 02-66-853-897.

As well as the regulatory authorities and specified quarry officers, it may be necessary to inform neighbours or anyone else who may be affected by the pollution incident. e.g. Properties located downstream of any pollution involving a local water course. This could be achieved by a personal visit or by phone. It will be necessary to inform all interested parties of:

The Nature & size of the incident.

Who else has been notified.

All relevant information regarding any chemical if chemical are involved.

What steps are in place to rectify the incident.

Supply the contact details for the person in charge of the incident, should the interested party require further information.

EPA Notification Protocol.

Protocol for industry notification of pollution incidents

Recent changes to Part 5.7 of the Protection of the Environment Operations Act 1997 (POEO Act) specify new requirements relating to the notification of pollution incidents.

The changes take effect from 6 February 2012 and require the occupier of premises, the employer or any person carrying on the activity which causes a pollution incident to immediately notify each relevant authority (identified below) when material harm to the environment is caused or threatened. The following information and procedures may assist those responsible for reporting a pollution incident.

Firstly, call 000 if the incident presents an immediate threat to human health or property. Fire and Rescue NSW, the NSW Police and the NSW Ambulance Service are the first responders, as they are responsible for controlling and containing incidents.

If the incident does not require an initial combat agency, or once the 000 call has been made, notify the relevant authorities in the following order. The 24-hour hotline for each authority is given when available:

- the appropriate regulatory authority (ARA) for the activity under the POEO Act (usually the EPA or local authority) the local authority is a local council of an area under the Local Government Act 1993), the Lord Howe island Board for Lord Howe Island, or the Western Lands Commissioner for the Western Division (except any part of the Western Division within the area of a local council)
- the EPA, if it is not the ARA—phone Environment Line on 131 555
- the Ministry of Health via the local Public Health Unit - see

Page 8. EPA Notification Protocol cont.

- www.health.nsw.gov.au/publichealth/infectious/phus.asp
- the WorkCover Authority - phone 13 10 50
- the local authority if this is not the ARA
- Fire and Rescue NSW - phone 1300 729 579

Note: If the situation warranted calling 000 as a first point of notification, you do not need to ring Fire and Rescue NSW again.

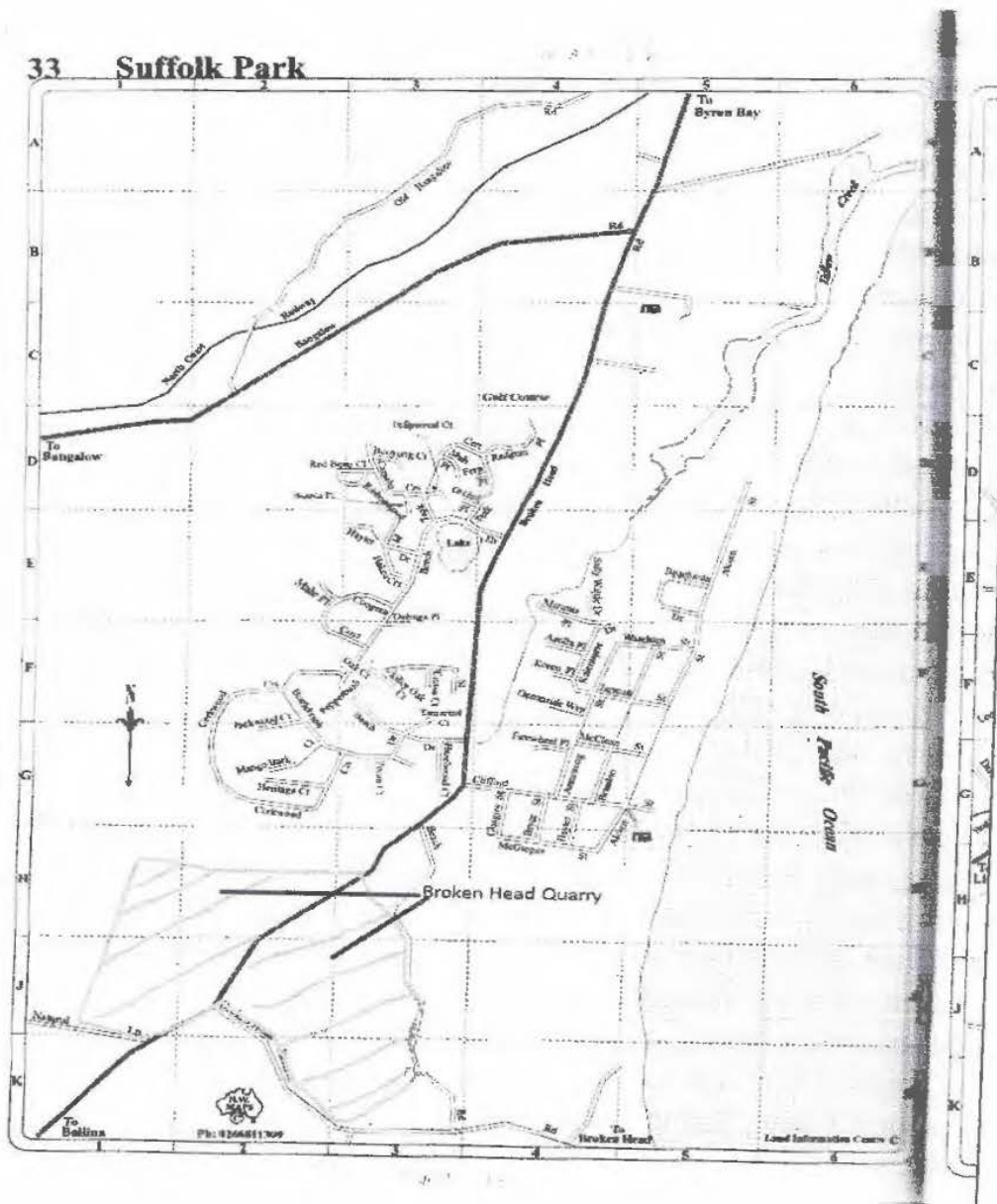
The appropriate contact for the relevant local authority and Public Health Unit will vary. All necessary contact numbers should be found in advance and stored for immediate access should a pollution incident need to be notified. These contact numbers should also be identified in the Pollution Incident Response Management Plan prepared for the premises.

Complying with these notification requirements does not remove the need to comply with any other obligations for incident notification, for example, those that apply under other environment protection legislation or legislation administered by WorkCover.

Procedures to minimise the risk of harm to persons in the vicinity.

While the likelihood of a large pollution incident, on the property, is very remote. BHQ does have an emergency assembly point at the weighbridge. It may be necessary to set up an exclusion zone around the perimeter of a significant pollution incident. If safe to do so, BHQ personnel will complete this task by using barrier tape at an appropriate distance from the incident. In the event of an incident occurring, the person in charge will delegate a company representative to attend the main entrance to Broken Head Quarry. This person will prevent any other vehicles or persons from entering the property and will direct attending emergency services to the incident site, as they arrive.

Property Location Diagram.



Actions to Be Taken, During or After a Pollution Incident.

In the unlikely event of a pollution incident, the following will occur.

- Any equipment involved, or in the vicinity, will be shut-down.
- Personnel on the scene will immediately contact the Quarry Manager and/or the sales office.
- The extent of the pollution threat will be determined by those on the scene. The Pollution Incident Response Plan put into affect immediately, if necessary.
- Appropriate authorities will be contacted. (Contact details on page 6 of this plan.)
- Spill kits will be utilized to contain any leak if possible. If insufficient absorbent equipment is available, soil or sand will be used as a temporary containment barrier.
- • If the spill is likely to escape beyond the property boundaries, or poses a threat to neighbours in any way. Notification procedures will be implemented. There is sufficient holding capacity in all of our ponds, which all surface run-off of any kind must pass through, that there is very little likelihood of anything escaping beyond the boundary. Unless it is airborne. BHQ does not carry anything on-site that could constitute an airborne threat. (Dust is minimised by the ongoing use of a water-cart whenever necessary.)
- In most cases, clean-up would be possible with our own equipment. In the event of a major event, e.g. a diesel delivery tanker falling into one of our ponds, we could isolate any given area or pond with fill materials if sufficient spill equipment was not immediately available.
- Disposal of spilt materials, if not of an organic nature, would take place after consultation with local authorities and the EPA to determine the best place for disposal. If organic, eg silt, containment until it can be moved by mechanical means, would be possible.

Staff Training.

All company staff have had training in:

- Understanding what constitutes a pollution incident.
- The steps to be taken in the event of any pollution incident.
- Use of appropriate spill equipment and it's location on-site.
- The location of copies of this plan.
- Safety procedures in the event of any pollution incident.
- Training log can be found in staff personnel files & training records.

Page 11.

This page intentionally blank.