



8 Princes' Street W., Box 343, Fenelon Falls, Kawartha Lakes, Ontario K0M 1N0
Phone: 705-887-3130 | Toll Free: 1-866-453-9277 | Fax: 705-887-3262
Website: www.jardinefuneralhome.com | Email: admin@jardinefuneralhome.com



JARDINE FUNERAL HOME LTD.

Robert D. Jardine and Monica Bertrand-Jardine
Owners

PRICE LIST

EFFECTIVE February 1, 2017

In accordance with The Bereavement Authority of Ontario:

The BAO administers provisions of the Funeral, Burial and Cremation Services Act (2002) on behalf of the Ministry of Government and Consumer Relations.

Person in charge of day to day operations:

Manager – Robert D. Jardine

Telephone – 705-887-3130

Dear Consumer:

We are pleased to provide you with our “Price List” for services and supplies as well as the Consumer Information Guide published by the Province of Ontario. It is our hope that these documents can make the planning process as easy as possible for you.

In addition we have included sections on our professional service charges, caskets, burial vaults, urns and other merchandise. Provided is price worksheet to assist you in determining charges so that you are able to thoroughly understand your options.

Please feel free to call upon us with any questions or concerns.

Sincerely,

Monica and Rob

BAO | BEREAVEMENT
AUTHORITY OF
ONTARIO

L'AUTORITÉ DES SERVICES FUNÉRAIRES ET CIMETIÈRES DE L'ONTARIO

WORKSHEET

This price worksheet should enable you to determine the costs of a funeral and review options surrounding planning financially. Please feel free to contact us during this process if you have any questions.

	Option A	Option B
Professional Service Charge:		
Casket/Container:		
Burial Vault/Urn Vault:		
Urn/Container:		
Register Book Package		
Other Merchandise		
Miscellaneous:		
Total:	=====	=====
HST 13%		
Grand Total	=====	=====
Estimated Disbursements		
Total of Disbursements		
Grand Total & Estimated Disbursement Total		

At the time of at-need funeral arrangements a deposit will be required by cheque or by Visa or Mastercard.

DISBURSEMENTS

Disbursements are items arranged for and possibly paid for on your behalf by Jardine Funeral Home Ltd. The Purchaser is expected to pay for these items at the time the contract is entered into during the arrangement process. The following are some items that are often identified as disbursements.

Disbursements paid by Jardine Funeral Home Ltd on At-Need Funeral Service Contract

Coroner's Fee - \$75.00

This fee is charged by the Coroner for issuing a Cremation Certificate which grants permission for the cremation to proceed. Without permission the cremation may be delayed pending his inquiry.

Municipal Death Registration Fee - \$20.00

This fee is charged by the City of Kawartha Lakes to register the death.

Newspaper/Death Notices - \$100.00 to \$1,000.00

Charges for death notices placed in newspapers, radio or other media outlets are charged according to their prevailing rates and will be estimated at the time of funeral arrangements until a confirmed price is received from the company.

Clergy - \$150.00 to \$400.00

This fee is paid to clergy for their services for officiating at the ceremony. In some cases the amount is set by the clergy or celebrant and in others it is determined by the Purchaser.

Disbursements paid by the Purchaser on At-Need Funeral Service Contract

Cremation Fee - \$587.60

This fee is set by Riverside Cemetery which owns and operates the only crematorium in the City of Kawartha Lakes. Jardine Funeral Home will be acting as an agent for the crematorium and will provide all pertinent documentation, permits and certificates required by the crematorium and the cost will be paid directly by cheque, Visa or Mastercard.

Cemetery Opening/Closing Fees - \$200.00 to \$1,500.00

This fee is set by individual cemeteries and final charges will be determined at the time of funeral arrangements. Saturday surcharges and double depth charges are also a consideration.

Reception Fees - \$5.00 to \$10.00 per person

This fee is set by local churches and may change depending on food choices made by the Purchaser. Final charges will be determined at the time of funeral arrangements.

DESCRIPTION OF SERVICES

PROFESSIONAL SERVICES & BASIC STAFF SERVICES

Arranging for consultation with a licensed funeral director, coordinating all aspects of arrangements such as: contacting clergy, cemetery, newspapers for funeral notices, arranging for transfer of the deceased and staff for transfer, arranging for flowers, reception, extra vehicles, affiliating services, evening prayers etc.

Attending to the front door for visiting, parking vehicles, receiving and processing all donations, setting up flowers and delivering, if required, after the funeral. Arranging for staff on the funeral day as well as required vehicles. We provide a minimum of four staff members at every ceremony with the exception of a graveside where only two staff members are required. We arrange for custodians, organists/soloist, receptions, parking facilities, and reserved seating. We are pleased to provide a Book of Memories portal on our funeral home website. www.jardinefuneralhome.com

For families choosing immediate cremation our Basic Professional Service charge is reduced.

DOCUMENTATION

Completion and filing of all documents necessary to carry out the services and supplies requested including but not limited to the death registration, burial/cremation permit, coroner's certificate for cremation, CPP/ Old Age Cancellation, CPP/Survivor's Applications, SIN and OHIP Cancellation, Cemetery Consent Form and if required documentation to ship the remains out of the country. Preparing and issuing of Funeral Director's Proof of Death Certificates by Jardine Funeral Home Ltd., as well as contracts, correspondence and invoices including maintaining necessary records for future use. Provision of 13 Funeral Director Proof of Death Certificates will be provided for Traditional and Memorial Ceremonies. Graveside and Immediate Cremation will receive 6 Funeral Director Proof of Death Certificates.

TRANSFER OF REMAINS (within 40 km; additional fees apply beyond 40 km)

Requires the use of the Service Vehicle. Transfer of remains by professional staff from one place to another including the transfer of the deceased from the place of death to our facility. Additional mileage is \$1.50 per km one way.

BASIC PREPARATION OF REMAINS

Requires the facilities for preparation, embalming, and shelter. Disinfection and dressing of the body and placement into the casket or container selected prior to burial, cremation or identification or viewing without embalming.

EMBALMING OF REMAINS

Requires basic preparation of remains. Embalming is the disinfection, preservation and restoration of the body by replacing blood and bodily fluids with chemical preservatives. Embalming is a suggested service should a family wish an open casket for either public or family viewing. Embalming is not legally required but may be recommended to preserve the remains between time of death and the services arranged for or in certain circumstances depending on the cause of death. Written permission is required by the executor or informant or person responsible for the funeral expenses prior to the embalming being performed. Jardine Funeral Home Ltd. requires the body must be embalmed if the body is to be in the funeral home's possession for more than 48 hours or at the discretion of the licensed funeral director.

FACILITIES FOR PREPARATION, EMBALMING & SHELTER

Use of the preparation room equipment, chemicals and sundries, maintenance supplies, hazardous waste disposal, specialized equipment, sanitation of preparation room, compliance with all government standards and temporary shelter and storage of remains up to 48 hours.

STAFF SERVICES FOR VISITATION

Staff to assist the licensed funeral director(s) with the visitation or informal gathering for a period up to 4 hours.

FACILITIES FOR VISITATION

The use of the funeral home for visitation for a period of up to 4 hours to include allowances for the payment of taxes, insurance, utilities, advertising, promotions and general maintenance, coffee lounge supplies, parking lot maintenance and expenses (snow removal/grass cutting), telephone, sound system, and other specialized systems as required.

STAFF SERVICES FOR CEREMONY

Staff to assist the licensed funeral director(s) with the ceremony, informal gathering or graveside ceremony for a period up to 2 hours.

FACILITIES FOR CEREMONY

The use of the funeral home for the ceremony or memorial service for up to 2 hours to include allowances for the payment of taxes, insurance, utilities, advertising, promotions and general maintenance, coffee lounge supplies, parking lot maintenance and expenses (snow removal/grass cutting), telephone, sound system, and other specialized systems as required.

VEHICLE REQUIREMENTS

LEAD CAR: Used for the completion of paperwork such as obtaining the Coroner's Cremation Certificate, registering the death to obtain the burial/cremation permit, as well as arranging the transportation of the clergy to the funeral home or to place of ceremony and driving the clergy when necessary to cemetery, crematorium for interments, gravesides or witnessing cremations and leading the funeral procession to the cemetery or crematorium. Also used to pick up human cremated remains after the cremation process from the crematorium at the funeral homes discretion.

SERVICE VEHICLE: Available for use 24 hours a day and is primarily used for the transport of remains from the place of death to our facility. It is also used to delivery floral arrangements following the ceremony or memorial to the family home, place of reception or location determined by family.

FUNERAL COACH: Primarily used to transport the casket, container or urn to the place of ceremony, cemetery or crematorium. No additional charge in the event of a spring burial.

MILEAGE: Additional mileage beyond 40km from our facility to the place of disposition will be charged at \$1.50 per km one way.

OTHER PROFESSIONAL SERVICES

PROFESSIONAL CHARGES

Staff and Vehicle Surcharge for time delay between ceremony and interment <ul style="list-style-type: none"> In the event of a delay between the ceremony and the interment on the same day or next day. (example: ceremony followed by reception then interment) 	\$	400.00
Staff Services for visitation over 4 hour period <ul style="list-style-type: none"> Occasionally staff services are required for periods of visitation over the allotted 4 hours. 	\$	100.00 per hour
Staff Services for ceremony or memorial over 2 hour period <ul style="list-style-type: none"> Occasionally staff services are required for ceremonies that are over the 2 hour allotment. 	\$	100.00 per hour
Refundable Deposit for Human Cremated Remains <ul style="list-style-type: none"> When human remains are to be cremated, a refundable deposit will be required to be paid. If the cremated remains are not claimed within one year of the cremation, the deposit may be used to inter the cremated remains in common ground. If the cremated remains are claimed before they are interred, the deposit will be refunded 	\$	350.00
Rush on Human Cremated Remains <ul style="list-style-type: none"> Human Cremated Remains that are required by the family in a “rush” and not at the funeral home convenience would be subject to this charge. 	\$	175.00
Removal of pacemaker or implant <ul style="list-style-type: none"> The removal of a pacemaker or implant will be carried out by a licensed professional. 	\$	N/C
Professional restorative procedures <ul style="list-style-type: none"> In some circumstances, additional restorative efforts beyond those captured in the standard embalming procedure are necessary to enhance the appearance of the deceased. In such cases, the funeral director will discuss the available options and there cost. Professional restorative procedures will be charged per hour. 	\$	250.00
Scattering of Human Cremated Remains <ul style="list-style-type: none"> Scattering of Human Cremated Remains in accordance with provincial and municipal laws and by-laws on land. Fees for scattering from a plane, boat or other will be in addition to this charge and will be disclosed upon request. 	\$	250.00
Spring Interment <ul style="list-style-type: none"> for Casket Burials 	\$	N/C
<ul style="list-style-type: none"> For Casket Burials held on a Saturday 	\$	300.00
Interment of Cremated Remains		
<ul style="list-style-type: none"> At Cemetery 	\$	200.00
<ul style="list-style-type: none"> On Saturday 	\$	250.00
Funeral Director’s Proof of Death Certificate	\$	10.00
Professional Hairdressing	\$	50.00

FACILITY

Private Family Viewing prior to interment or cremation (30 minute maximum) <ul style="list-style-type: none"> Use of Facility and Staff (Professional and Facility charge) 	\$	250.00
Use of Facility for the purpose of Reception <ul style="list-style-type: none"> Use of the facilities for a reception following the ceremony or memorial service which includes the set up of the facility, the use of the facility and amenities. 	\$	200.00

EQUIPMENT

Equipment for visitation and ceremony at remote location <ul style="list-style-type: none">• Deliver, set up and use of equipment necessary to arrange for the visitation and ceremony at a location other than funeral establishment or church.	\$	250.00
Grass and Lowering Device <ul style="list-style-type: none">• Use of two staff members and of service vehicle to transport equipment, boards, grass, set up, and wait until the graveside ceremony is concluded as well as removal of above items.	\$	400.00
Tent Rental for Graveside Ceremonies	\$	500.00
Audio Visual Surcharge In the circumstance when Jardine Funeral Home has not produced the slide show presentation or Celebration of Life DVD. All slide show presentations are required to be delivered to us at least 24 hours prior to visitation or ceremony to ensure that the content can play on our system.	\$	75.00
Scanning Photos received by Jardine Funeral Home for the purpose of scanning and cropping to assist family with the creation of their slide show presentation. (per photo)	\$	2.00

SUNDRY

Body Bag <ul style="list-style-type: none">• Un-Embalmed Human Remains waiting to be cremated will be placed in a body bag and/or all Embalmed Human Remains placed in a cemetery vault during the winter months for spring burial.	\$	50.00
Velvet Urn Bag	\$	25.00

VEHICLE

Family Car <ul style="list-style-type: none">• 3 hour maximum rental time. Notice required in securing vehicle from livery service. Additional charges apply if over the allotted time.	\$	Quotation Required
Limousine <ul style="list-style-type: none">• 3 hour maximum rental time. Notice required in securing vehicle from livery service. Additional charges apply if over the allotted time.	\$	Quotation Required

TRADITIONAL CEREMONY WITH BURIAL/CREMATION

(Up to 4 Hours of Visitation with Ceremony same day or next)

PROFESSIONAL SERVICE & BASIC STAFF SERVICE	\$	1,000.00
DOCUMENTATION	\$	600.00
TRANSFER OF REMAINS Within 40 km; additional fees apply beyond 40 km	\$	450.00
BASIC PREPARATION OF REMAINS	\$	350.00
EMBALMING OF REMAINS	\$	300.00
FACILITIES FOR PREPARATION, EMBALMING & SHELTER	\$	450.00
STAFF SERVICES FOR VISITATION	\$	500.00
FACILITIES FOR VISITATION	\$	500.00
STAFF SERVICES FOR CEREMONY	\$	650.00
FACILITIES FOR CEREMONY	\$	700.00
VEHICLE REQUIREMENTS		
Lead Car	\$	100.00
Service Vehicle	\$	400.00
Funeral Coach	\$	500.00

\$ 6,500.00

Less Package Discount

\$ 1,000.00

Total

\$ 5,500.00

Unless otherwise identified all prices do not include HST

MEMORIAL CEREMONY WITH CREMATION

(Up to 4 Hours of Visitation prior to Memorial service)

PROFESSIONAL SERVICE & BASIC STAFF SERVICE	\$	1,000.00
DOCUMENTATION	\$	600.00
TRANSFER OF REMAINS Within 40 km; additional fees apply beyond 40 km	\$	450.00
BASIC PREPARATION OF REMAINS	\$	350.00
FACILITIES FOR PREPARATION, EMBALMING & SHELTER	\$	450.00
STAFF SERVICES FOR VISITATION	\$	500.00
FACILITIES FOR VISITATION	\$	500.00
STAFF SERVICES FOR CEREMONY	\$	650.00
FACILITIES FOR CEREMONY	\$	700.00
VEHICLE REQUIREMENTS		
Lead Car	\$	100.00
Service Vehicle	\$	400.00

	\$	5,700.00
Less Package Discount	\$	700.00
Total	\$	5,000.00

Unless otherwise identified all prices do not include HST

MEMORIAL VISITATION WITH RECEPTION

PROFESSIONAL SERVICE & BASIC STAFF SERVICE	\$ 1,000.00
DOCUMENTATION	\$ 600.00
TRANSFER OF REMAINS Within 40 km; additional fees apply beyond 40 km	\$ 450.00
BASIC PREPARATION OF REMAINS	\$ 350.00
FACILITIES FOR PREPARATION, EMBALMING & SHELTER	\$ 450.00
STAFF SERVICES FOR VISITATION	\$ 500.00
FACILITIES FOR RECEPTION	\$ 1000.00
VEHICLE REQUIREMENTS	
Lead Car	\$ 100.00
Service Vehicle	\$ 400.00

	\$ 4,850.00
Less Package Discount	\$ 350.00
Total	\$ 4,500.00

Unless otherwise identified all prices do not include HST
Please see catering price list within this document.

CELEBRATION OF LIFE CEREMONY OUTSIDE OF FUNERAL HOME

PROFESSIONAL SERVICE & BASIC STAFF SERVICE	\$ 1,000.00
DOCUMENTATION	\$ 600.00
TRANSFER OF REMAINS Within 40 km; additional fees apply beyond 40 km	\$ 450.00
BASIC PREPARATION OF REMAINS	\$ 350.00
FACILITIES FOR PREPARATION, EMBALMING & SHELTER	\$ 450.00
STAFF SERVICES FOR VISITATION	\$ 500.00
STAFF SERVICES FOR CEREMONY	\$ 650.00
VEHICLE REQUIREMENTS	
Lead Car	\$ 100.00
Service Vehicle	\$ 400.00

	\$ 4,500.00
Less Package Discount	\$ 200.00
Total	\$ 4,300.00

Unless otherwise identified all prices do not include HST

**GRAVESIDE CEREMONY
WITH BURIAL OR CREMATION**
(April 15 – November 15)

PROFESSIONAL SERVICE & BASIC STAFF SERVICE	\$	1,000.00
DOCUMENTATION	\$	600.00
TRANSFER OF REMAINS Within 40 km; additional fees apply beyond 40 km	\$	450.00
BASIC PREPARATION OF REMAINS	\$	350.00
FACILITIES FOR PREPARATION, EMBALMING & SHELTER	\$	450.00
STAFF SERVICES FOR GRAVESIDE	\$	350.00
VEHICLE REQUIREMENTS		
Lead Car	\$	100.00
Service Vehicle	\$	400.00

	\$	3,700.00
Less Package Discount	\$	200.00
Total	\$	3,500.00

Optional: Tent Rental with casket and burial vault add \$150.00 or with cremated remains add \$500.00
Optional: Funeral Coach rental from Livery Service if required \$ 500.00
Unless otherwise identified all prices do not include HST

IMMEDIATE CREMATION

PROFESSIONAL SERVICE & BASIC STAFF SERVICE	\$	400.00
DOCUMENTATION	\$	300.00
TRANSFER OF REMAINS Within 40 km; additional fees apply beyond 40 km	\$	450.00
BASIC PREPARATION OF REMAINS	\$	350.00
FACILITIES FOR PREPARATION, EMBALMING & SHELTER	\$	300.00
VEHICLE REQUIREMENTS Service Vehicle	\$	200.00

	\$	2,000.00
Less Package Discount	\$	200.00
Total	\$	1,800.00

Unless otherwise identified all prices do not include HST

FULL PAYMENT is required at time of signing of contract by cheque or Visa/Mastercard

CATERING

Shared meals have brought families together around funeral services since the beginning of time. Traditional or contemporary, the funeral reception allows family and friends to continue spending time together sharing memories and comfort.

With the catered reception services offered through Jardine Funeral Home, you won't need to schedule more appointments to organize and plan the menu or find time to shop for food and beverages for your guests. We can arrange it all for you.

When it comes to planning your loved one's funeral service, we think you already have enough on your mind. Let us take care of the catering. It's just one more way we offer service beyond expectation.

Package A

Diamond Sandwiches

- Egg Salad
- Salmon
- Ham

Pickles

Squares

Coffee, Tea, Lemonade

Price: \$ 10.00 per person

Package B

Diamond Sandwiches

- Egg Salad
- Salmon

Croissant

- Ham

Fruit & Vegetable Trays

Pickles

Squares

Coffee, Tea, Lemonade

Price: \$ 15.00 per person

Unless otherwise identified all prices do not include HST

ADDITIONAL MERCHANDISE

STATIONERY: Visit www.themeviewer.tributecentre.com for a complete selection of personalized life theme options



Itemized Prices:

Candle \$50.00, Register Book, 100.00
 Folder \$1.50 each, Bookmark \$5.00 each
 Prayer Cards \$1.00 each, Box of 25 Thank You \$50.00
 Program \$2.00, Tri-Fold \$2.00
 Program and Tri-Fold require 24 hours notice

LIFE CELEBRATION TRIBUTES:

- Personalize your DVD tribute from almost 450 different themes
- Select 2 pieces of music that was special to your loved one
- Will include Cinematic Intro/Ending



Note: An Audio-Visual Surcharge is added when Jardine Funeral Home does not produce the slide show presentation.

- Presentations (Max. 50 pictures)	\$	275.00
- Video Clip included	\$	30.00
- Additional Copies of DVD	\$	25.00
- Each Additional Photograph (over 50 photos)	\$	1.00

WEBCASTING:



DESCRIPTION: Jardine Funeral Home is able to send an email invitation to family and friends around the world. The portal is private and secure and not made public. However, it solely is dependant on the quality of the Wi-Fi service on both the sending and receiving ends.

Webcasting Service (1 copy on DVD)	\$	150.00
Video Tape Service (1 copy on DVD)	\$	150.00
Additional Copies of Service	\$	25.00

Keepsake Pillow:



DESCRIPTION: Handcrafted locally. We would like to invite you to bring an article of clothing to be transformed into a unique comfort pillow. Please allow for 3 week delivery.

PRICE: \$ 50.00

Unless otherwise identified all prices do not include HST

ADDITIONAL MERCHANDISE *continued*

Tribute Blanket:



Description: The tribute blanket is woven using a photo and may include other family members, pets or a setting that is comforting. These blankets are extra large, approximately 6 feet long and woven of extra soft cotton.

Manufacturer: Pure Country (US)

Price:.....\$250.00

White Dove Release:



Description: White Doves released at the graveside following services.

Price:.....\$150.00

Unless otherwise identified all prices do not include HST

ADDITIONAL MERCHANDISE *continued*

Eternity's Touch:



DESCRIPTION: Eternity's Touch is the proud crafter of the only "patent pending" process that digitally captures, transfers and creates an exact replication of a person's fingerprint. Our **Eternity's Touch Collection** consists of custom designed pieces that resonate with their owner, creating a deep emotional connection – a constant reminder of the bond shared with a loved one. Each piece creates a legacy for generations to come. In a world of billions, the fingerprint is truly unique

Available in yellow gold, white gold and sterling silver. Quotation required as the price is based on gold and silver at the time of purchase. Please ask us for a brochure. Available products are: Oval Pendants, Flat Heart Pendants, Cross Pendants, Teardrop Pendants, Picture Frames and Dog Tags.

Securigene DNA Preservation & Banking:



Pre-Need Kit \$389.00
At-Need Kit \$498.00

DNA contains valuable information about a person's ancestry, health, traits and conditions. It is important to preserve this precious information for generations to come. Whether it is for sentimental reasons or potential future use, DNA Banking creates opportunities that would otherwise be lost forever.

DNA can be used for a wide range of genetic testing applications including disease testing, health risk analysis, identity and ancestry testing. With rapid advances in genetic testing technology, the number of diseases that can be identified through genetic testing is steadily increasing.

Unless otherwise identified all prices do not include HST

CASKET SELECTION PRICE LIST

100% CANADIAN

Adult Size Casket Dimensions Average:
77" L x 22" W x 15" D

* Suitable for Cremation

1. CASKET: 23 Classic Solid Cherry



MANUFACTURER: Northern Casket Co.

DESCRIPTION: Satin Cherry Finish, Champagne Velvet Interior

PRICE: \$ 4,200.00 *

2. CASKET: 979 Versailles Solid Mahogany



MANUFACTURER: Northern Casket Co.

DESCRIPTION: Gloss Mahogany Finish, Champagne Velvet Interior

PRICE: \$ 3,995.00 *

3. CASKET: 23 Cambrian Solid Oak



MANUFACTURER: Northern Casket Co.

DESCRIPTION: Gloss Oak, Champagne Velvet Interior

PRICE: \$ 3,400.00 *

Unless otherwise identified all prices do not include HST

CASKET SELECTION PRICE LIST
100% CANADIAN

4. CASKET: 651 Brunswick Oak



MANUFACTURER: Northern Casket Co.

DESCRIPTION: Solid Oak, Satin Finish, Crème Velvet Interior, Full Wood Bar Handle,

PRICE:\$ 3,200.00 *

5. CASKET: 800 Trafalgar Oak



MANUFACTURER: Northern Casket Co.

DESCRIPTION: Gloss Oak Finish, Crème Crepe Interior

PRICE: \$ 3,200.00 *

6. CASKET: 621 Kingsley Poplar



MANUFACTURER: Northern Casket Co.

DESCRIPTION: Canadian Poplar with Hand Rubbed Walnut Finish,
Rosetan Crepe Interior, Full Wood Bar Handle.

PRICE:\$ 3,000.00 *

Unless otherwise identified all prices do not include HST

CASKET SELECTION PRICE LIST

100% CANADIAN

7. CASKET: 705 Niagara Solid Oak



MANUFACTURER: Northern Casket Co.

DESCRIPTION: Satin Oak Finish, Crepe Crème Interior

PRICE: \$ 2,800.00 *

8. CASKET: 818 Settlers Hardwood



MANUFACTURER: Northern Casket Co.

DESCRIPTION: Oak or Ash, "Barnboard" Finish, Linen Interior

PRICE: \$ 2,700.00*

9. CASKET: 659 Woodpark Solid Oak



MANUFACTURER: Northern Casket Co. MANUFACTURER: Northern Casket Co.

DESCRIPTION: Gloss Oak Finish, Crème Crepe Interior

PRICE: \$ 2,700.00 *

Unless otherwise identified all prices do not include HST

CASKET SELECTION PRICE LIST
100% CANADIAN

10. CASKET: 500 Rosehall Ladies Octagon Oak



MANUFACTURER: Northern Casket Co.

DESCRIPTION: Solid Oak, Satin Finish, Full Wood Bar Handle,
Pink Crepe Interior with Needlepoint Roses.

PRICE:\$ 2,700.00 *

11. CASKET: 18 Frontenac Solid Poplar



MANUFACTURER: Northern Casket Co.

DESCRIPTION: Walnut Finish, Crème Crepe Interior

PRICE: \$ 2,600.00 *

12. CASKET: 707 Homestead Solid Maple



MANUFACTURER: Northern Casket Co.

DESCRIPTION: Gloss Maple Finish, Crème Crepe Interior

PRICE: \$ 2,600.00 *

Unless otherwise identified all prices do not include HST

CASKET SELECTION PRICE LIST
100% CANADIAN

13. CASKET: 303 Camo Ash-Veneer



MANUFACTURER: Northern Casket Co.

DESCRIPTION: Ash Gloss/Camo Cloth, Crème Crepe Interior

PRICE: \$ 2,500.00 *

14. CASKET: 208N Truman Steel (Burial Only)



MANUFACTURER: Northern Casket Co.

DESCRIPTION: 20 Gauge Brown, Rosetan Crepe Interior

PRICE: \$ 2,400.00

15. CASKET: 646 Kleinburg Solid Poplar



MANUFACTURER: Northern Casket Co.

DESCRIPTION: Gloss Poplar Finish, Crème Crepe Finish

PRICE: \$ 2,400.00 *

Unless otherwise identified all prices do not include HST

CASKET SELECTION PRICE LIST
100% CANADIAN

16. CASKET: 33 Carlton Ash



MANUFACTURER: Northern Casket Co.

DESCRIPTION: Gloss Ash Veneer Finish, Crème Crepe Interior

PRICE: \$ 2,400.00 *

17. CASKET: 550 Sussex Solid Ash



MANUFACTURER: Northern Casket Co.

DESCRIPTION: Satin Ash Finish, Crème Crepe Interior

PRICE: \$ 2,100.00 *

18. CASKET: 517M Baxley Poplar



MANUFACTURER: Northern Casket Co.

DESCRIPTION: Poplar Veneer, Yellow Crepe Interior, Mahogany Gloss Finish
Full Metal Handle.

PRICE:\$ 2,100.00 *

Unless otherwise identified all prices do not include HST

CASKET SELECTION PRICE LIST
100% CANADIAN

19. CASKET: 632 Minto Poplar Veneer



MANUFACTURER: Northern Casket Co.

DESCRIPTION: Gloss Poplar Finish, Crème Crepe Interior

PRICE: \$ 2,000.00 *

20. CASKET: 228DW Carter Poplar



MANUFACTURER: Northern Casket Co.

DESCRIPTION: Solid Poplar Wood, Dark Walnut Gloss Finish, Champagne Crepe Interior,
Full Metal Bar Handle.

PRICE: \$ 2,000.00 *

21. CASKET: 419 Rose Arlington Cloth/Wood



MANUFACTURER: Northern Casket Co.

DESCRIPTION: Rose Cloth Finish, Pink Satin Interior

PRICE: \$ 1,900.00 *

Unless otherwise identified all prices do not include HST

CASKET SELECTION PRICE LIST
100% CANADIAN

22. CASKET: 419 Blue Bird Arlington Cloth/Wood



MANUFACTURER: Northern Casket Co.

DESCRIPTION: Blue Cloth Finish, Blue Satin Interior, Full Metal Handle

PRICE: \$ 1,900.00 *

23. CASKET: 515 Albany Poplar Veneer



MANUFACTURER: Northern Casket Co.

DESCRIPTION: Poplar Veneer, Mahogany Satin Finish, White Satin Interior,
Full Wood Handle

PRICE: \$ 1,800.00 *

24. CASKET: 444 Glentay Solid Ash



MANUFACTURER: Northern Casket Co.

DESCRIPTION: Solid Ash Wood, Amber Satin Finish, Rosetan Crepe Interior
Full Wood Bar Handle.

PRICE:\$ 1,700.00 *

Unless otherwise identified all prices do not include HST

CASKET SELECTION PRICE LIST
100% CANADIAN

25. CASKET: 505 September Poplar Veneer



MANUFACTURER: Northern Casket Co.

DESCRIPTION: Acorn Satin Finish, Champagne Crepe Interior

PRICE: \$ 1,700.00 *

26. CASKET: 405 Delta Solid Pine



MANUFACTURER: Northern Casket Co.

DESCRIPTION: Satin Pine Finish, Crème Crepe Interior

PRICE: \$ 1,600.00 *

27. CASKET: 504L Durham Poplar



MANUFACTURER: Northern Casket Co.

DESCRIPTION: Natural Acorn Finish, White Silk Interior, Full Metal Bar Handle.

PRICE:\$ 1,600.00 *

Unless otherwise identified all prices do not include HST

CASKET SELECTION PRICE LIST

100% CANADIAN

28. CASKET: 70 Grey Cloth Finish/Particle Board Wood



MANUFACTURER: Northern Casket Co.

DESCRIPTION: Grey Cloth Finish, White Satin Interior

PRICE: \$ 1,200.00 *

29. CASKET: 60 Cloth Covered/Particle Board Wood



MANUFACTURER: Northern Casket Co.

DESCRIPTION: Grey Cloth Finish, White Satin Interior

PRICE: \$ 1,000.00 *

30. CASKET: 102 Enviro- Container



MANUFACTURER: Northern Casket Co.

DESCRIPTION: Solid Poplar/Natural Finish, (no nails), Wood Handles, Cloth Interior

PRICE: \$ 750.00 *

31. CASKET: 100 Jardine Container



MANUFACTURER: Jardine Funeral Home Ltd.

DESCRIPTION: Particle Board Wood Finish, No Interior

PRICE: \$ 400.00 *

Unless otherwise identified all prices do not include HST

CASKET RENTAL PRICE LIST

This casket has been used before and may be used again up to a maximum of 12 times.
The cremation insert and interior is changed after each use.

1. CASKET: 610 Weston Ash Rental



RENTAL ONLY

MANUFACTURER: Northern Casket Co.

DESCRIPTION: Satin Finish, Crème Interior

PRICE: \$ 1,700.00

Unless otherwise identified all prices do not include HST

CASKET PANELS



Price: \$ 250.00 each



CASKET SELECTION PRICE LIST

OVERSIZE CASKETS

Increasingly we are finding the need to supply oversize options for our client families.
Please consider the following options and discuss the possible need.

1. CASKET: 10 Particle Board

MANUFACTURER: Northern Casket Co.

DESCRIPTION: No interior, no handles

Plus Size: 79" L x 26" W x 14" D (Interior) Price: \$ 600.00 *

Super Size: Price:\$ quote *

2. CASKET: 60 Cloth Covered/Particle Board Wood



MANUFACTURER: Northern Casket Co.

DESCRIPTION: Grey Cloth Finish, White Satin Interior

Plus Size: 79" L x 26" W x 16" D (Interior) Price:\$ 1,300.00 *

Super Size: 78" L x 30" W x 18" D (Interior) Price:\$ 1,500.00 *

3. CASKET 528 Autumn Walnut Solid Poplar



MANUFACTURER: Northern Casket Co.

DESCRIPTION: Amber Finish, Rosetan Crepe Interior

Plus Size: 79" L x 28" W x 17" D (Interior) Price:\$ 1,600.00 *

Super Size: 78" L x 30" W x 18" D (Interior) Price:\$ 1,900.00 *

Unless otherwise identified all prices do not include HST

OUTER BURIAL CONTAINERS

A burial vault is an outer container which houses the casket or urn for burial. Outer containers protect the casket or urn from the weight of the earth and heavy maintenance equipment what will pass over the grave, which may create forces that an unprotected casket or urn cannot withstand. They are made of specially formulated concrete or fiberglass that is designed to handle these elements and more. Since concrete becomes stronger when it is placed in the ground, a vault buried years ago actually gets stronger with time. Outer containers are manufactured with and without waterproof linings and with double, single or no reinforcement qualities.

OPTION: Tent Rental for Graveside and Committal Services
\$150.00

OUTER BURIAL VAULT LIST

1. VAULT: Bronze Triune



MANUFACTURER: P.D. Baker Ltd.

DESCRIPTION: Extra Heavy Concrete , Seamless ABS Trilon Inner Liner bonded to base and cover
16-ounce Bronze Interior Metal Liner bonded to ABS
Precision fit tongue and groove seal with all weather butyl Superseal
Name Plate and Wreath

PRICE:\$ 3,100.00

2. VAULT: Copper Triune



MANUFACTURER: P.D. Baker Ltd.

DESCRIPTION: Extra Heavy Concrete, Seamless ABS Trilon Inner Liner bonded to base and cover
16-ounce Copper Interior Metal Liner bonded to ABS
Precision fit tongue and groove seal with all weather butyl Superseal
Name Plate and Wreath

PRICE:\$ 3,100.00

Unless otherwise identified all prices do not include HST

OUTER BURIAL VAULT LIST

3. VAULT: Caroline

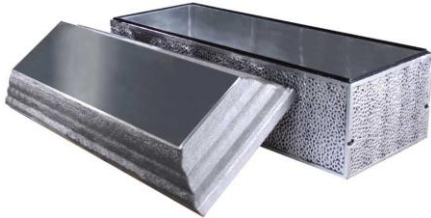


MANUFACTURER: P.D. Baker Ltd.

DESCRIPTION: Extra Heavy Concrete, Seamless ABS Trilon Inner Liner bonded to base and cover
26 gauge Stainless Steel Interior Metal Liner bonded to ABS
Precision fit tongue and groove seal with all weather butyl Superseal
Cover has a Cameo Rose Design with Name Plate and Wreath

PRICE:\$ 2,600.00

4. VAULT: Concorde



MANUFACTURER: P.D. Baker Ltd.

DESCRIPTION: Extra Heavy Concrete, Seamless ABS Trilon Inner Liner bonded to base and cover
26 gauge Stainless Steel Interior Metal Liner bonded to ABS
Precision Fit tongue and groove seal with all weather butyl Superseal
Name Plate and Wreath

PRICE:\$ 2,600.00

5. VAULT: Tremont



MANUFACTURER: P.D. Baker Ltd.

DESCRIPTION: Solid Concrete, Marbelon Liner, White and Gold Finish
with Imprinted Name on Vault

PRICE:\$ 2,000.00

Unless otherwise identified all prices do not include HST

OUTER BURIAL VAULT LIST

6. VAULT: Estate



MANUFACTURER: P.D. Baker Ltd.

DESCRIPTION: Solid Concrete with polystyrene, Guaranteed Waterproof, Plastic Liner
Gold Finish with Nameplate

PRICE:\$ 1,600.00

Optional Tent Rental.....\$ 150.00

7. VAULT: Guardian



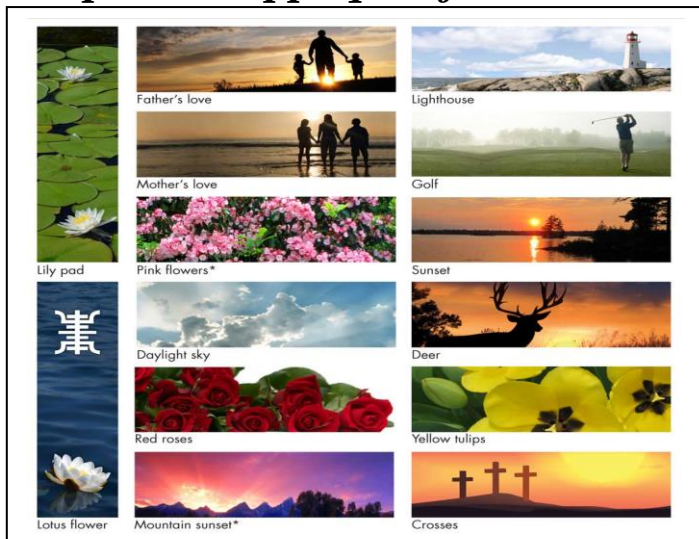
MANUFACTURER: P.D. Baker Ltd.

DESCRIPTION: Reinforced Concrete Structure, together with tongue and groove lid. Unsealed.
Gold Finish, Nameplate
Inside Dimensions 86"L x 32"W x 25"H

PRICE:\$ 1,300.00

Optional Tent Rental.....\$ 150.00

Optional Appliqués for Vaults:



Price: \$275.00

Unless otherwise identified all prices do not include HST

CREMATION URN LIST

1. URN: ZB 071L & ZB 071R Book and Vine



DESCRIPTION: Zinc Die Cast with Solid Bronze Front
 4-1/2"W x 7"D x 8-1/2"H Vol.: 220 cu. in.
 Side by side may be used as double inurnment

MANUFACTURER: Eckels

PRICE:\$1,120.00

PRICE: \$1,600.00 (both)

2. URN: 901 Black Marble (Muskoka)

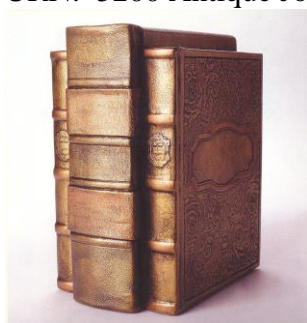


DESCRIPTION: Scenes: Flying Goose, Geese Flying in Formation, Windswept
 Pine, Loon and Trees, Praying Hands, Cross and Pine
 6-3/8"W x 6-3/8"D x 8-7/8"H, Vol.: 200 cu. in.

MANUFACTURER: Eckels

PRICE: \$ 890.00

3. URN: 5200 Antique Journals



DESCRIPTION: Gold Cast Bronze, 5-3/4"W x 8"D x 10"H
 Vol.: 200 cu. in.

MANUFACTURER: Eckels

PRICE: \$ 725.00

Unless otherwise identified all prices do not include HST

CREMATION URN LIST

4. URN: #3535 Verdun Memory Chest



DESCRIPTION: Mahogany with Satin Finish

10-1/2"W x 8"D x 6"H, Vol.: 200 cu. in.

MANUFACTURER: Eckels

PRICE: \$ 700.00

PRICE: Combined with Bronze Chest Insert \$ 1,200.00

5. URN: #500 Bronze Chest Insert



DESCRIPTION: Bronze, 9"W x 6"D x 4"H, Vol.: 210 cu. in.

Insert Fits Verdun 3535

MANUFACTURER: Eckels

PRICE: \$ 680.00

PRICE: with memory chest purchased \$ 500.00

6 URN: 3523 Fairmont



DESCRIPTION: Solid Cherry with Satin Finish,

11-5/8"W x 7"D x 6-1/4"H, Vol.: 200 cu. in.

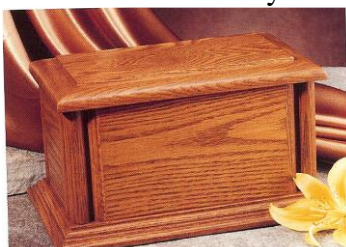
MANUFACTURER: Eckels

PRICE: \$ 575.00

Unless otherwise identified all prices do not include HST

CREMATION URN LIST

7. URN: 3526 Embassy

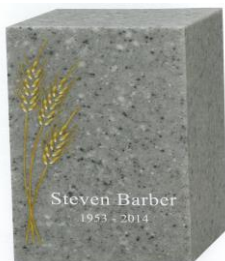


DESCRIPTION: Oak with Satin Finish,
7-1/2"W x 11-1/4"L x 6-1/4"H, Vol.: 200 cu. in.

MANUFACTURER: Eckels

PRICE: \$ 575.00

8. URN: 5801 Cold Cast Granite Villa with Wheat



DESCRIPTION: Granite, 5.25"W x 7" D x 8.25" H/ 200 CI

MANUFACTURER: Eckels

PRICE: \$ 450.00

9. URN: 832 Butterfly Copper Cloisonne



DESCRIPTION: Opens from the Top , 8"D x 9-1/4"H, Vol.: 210 cu. in.

Base Measures 4-7/8"D x 1-5/8"H

MANUFACTURER: Eckels

PRICE: \$ 500.00

Unless otherwise identified all prices do not include HST

CREMATION URN LIST

10. URN: 903 Tiger Eye Marble



DESCRIPTION: Marble

7-1/2"D x 10"H, Vol.: 200 cu. in.

MANUFACTURER: Eckels

PRICE: \$ 400.00

11. URN: 511L Odessa Floral



DESCRIPTION: Bronze Floral

10"H x 7-1/4"W, Vol.: 200 cu. in.

MANUFACTURER: Eckels

PRICE: \$ 400.00

12. URN: 311 Classic



DESCRIPTION: Bronze, 5-1/2"W x 5-1/2"D x 7-1/2"H

Vol.: 210 cu. in.

MANUFACTURER: Eckels

PRICE: \$ 550.00

Unless otherwise identified all prices do not include HST

CREMATION URN LIST

13. URN: 501SV Clarion



DESCRIPTION: Pewter Finish, 6.75" diameter X 12.5"H

MANUFACTURER: Eckels

PRICE: \$ 350.00

14. URN: Back to Nature – Bios Urn



Description: Biodegradable.

PRICE: \$ 350.00

15. URN: 3522 ASPINE PINE



DESCRIPTION: Pine, 11.4" W x 6.9" D x 6.25" H/210 CI

MANUFACTURER: Eckels

PRICE: \$ 240.00

Unless otherwise identified all prices do not include HST

CREMATION URN LIST

16. URN: PBB 200 Birch Photo Urn



DESCRIPTION: Birch Veneer, 6" W x 8" D x 10.5" H/ 200 CI

MANUFACTURER: Eckels

PRICE: \$ 240.00

17. URN: RUCBB Basic Bamboo



DESCRIPTION: Bamboo, 9 3/8" W x 5.25" D x 6.5" H/ 200 CI

MANUFACTURER: Eckels

PRICE: \$ 240.00

Unless otherwise identified all prices do not include HST

OUTER BURIAL VAULT

Guardian Sandstone Urn Vault



Brass plaque included / Urn not included

DESCRIPTION: 16"W x 14"H (12" x 12" inside the base)

MANUFACTURER: Eckels

PRICE: \$ 400.00

Unless otherwise identified all prices do not include HST

KEEPSAKES

1. **KEEPSAKE: 540K Vesta Keepsake**



DESCRIPTION: Bronze

2-1/4"D x 1"H Vol.: 2 cu. in.

MANUFACTURER: Eckels

PRICE: \$ 365.00

2. **KEEPSAKE: 827 Sharing Cloisonné**



DESCRIPTION: Blue Copper Cloisonne (Pink also available)

2-3/4"D x 3-1/2"H, Vol.: 2.5 cu. in.

Base Measures 2-1/4"D x 1"H

MANUFACTURER: Eckels

PRICE: \$ 200.00

3. **KEEPSAKE: 833 Sharing Cloisonné**



DESCRIPTION: Butterfly Copper Cloisonne

2-3/4"D x 3-1/2"H, Vol.: 2.5 cu. in.

Base Measures 2-1/4"D x 1"H

MANUFACTURER: Eckels

PRICE: \$ 200.00

Unless otherwise identified all prices do not include HST

KEEPSAKES

4. **KEEPSAKE 914 Tiger Eye Marble**



DESCRIPTION: Tiger Eye Marble
2-1/2"Dia. x 3-1/4"H / 2.5 CI

MANUFACTURER: Eckels

PRICE:..... \$ 140.00

5. **Keepsake: QB511K Odessa Floral**



DESCRIPTION: Bronze with Pewter Finish
2-3/4"D x 3-1/4"H, Vol.: 2.5 cu. in.

MANUFACTURER: Eckels

PRICE:..... \$ 140.00

6. **COMFORT CUB**



DESCRIPTION: Keepsake Plush Bear with heart locket.
Locket can hold pictures, cremated remains, locket of hair behind a sealed plate.
MANUFACTURER: Inevitable Exodus Inc.

PRICE:\$ 100.00

Unless otherwise identified all prices do not include HST

DEPOSIT, PAYMENT, FINANCING AND FUNDING

We are proud to offer various payments, funding and financing options to the families we serve. However, for our 'Immediate Cremation' families payment in full is required at the time of signing the contract.

DEPOSIT: At the time of at-need funeral arrangements a deposit will be required to be paid by cash, Visa or Mastercard and will be determined by the licensed funeral director signing the contract.

PAYMENT ON AT-NEED CONTRACTS:

Unless otherwise specified, payment is due within 15 days of signing the at-need funeral service contract. Payment may be made by cash, cheque, Visa or Mastercard. After 15 days interest will be charged at the rate of 5% per month on the balance owing until the contract is paid in full.

OVERDUE ACCOUNTS:

Accounts overdue will be sent to collections after every attempt has been made to resolve payment.

FINANCING ON PRE-NEED CONTRACTS:

Our payment plans give you the option of making payments over time. We offer a competitive financing program through Funeral Plans Canada.

FUNDING FOR PRE-NEED CONTRACTS:

When choosing to pre-pay services and supplies offered by Jardine Funeral Home Ltd. by prepaying you agree to pay the services and supplies today and the money will be used to pay for the services and supplies when they are delivered at the time of death.

- Insurance – Your funds are invested with Funeral Plans Canada where the proceeds of the insurance contract will be used for the services and supplies at the time they are delivered or the contract is cancelled.