

SA RUBBISH REPORT



The 2020 Rubbish Report is a snapshot of rubbish removed by Clean Up Australia volunteers. Across South Australia, the Report is based on the count of 21,631 rubbish items from 86 surveyed locations (22,885 items from 71 locations in 2019).

ESTIMATED VOLUNTEERS:

35,439

40,978 in 2019



1,097.8

ESTIMATED UTE LOADS
1,058.2 in 2019 REMOVED



VOLUNTEER HOURS:

70,878

81,956 in 2019



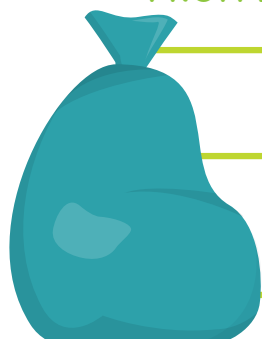
SITES REGISTERED:

509

481 in 2019



NOTABLE CHANGES FROM 2019



Rubber and polystyrene remained consistent as a percentage of counted rubbish

% INCREASE

paper increased by 8%, glass by 4%, and metals by 3%

11%

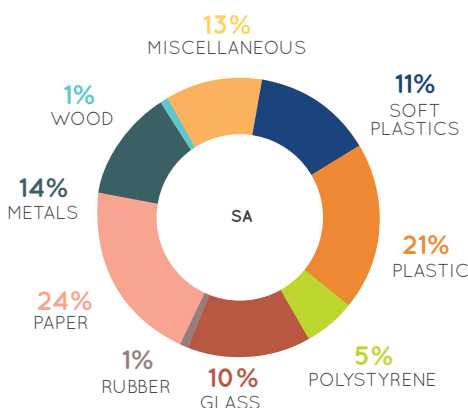
SOFT PLASTICS

Soft plastics reflected 11% of the plastics count - 3% below national averages

% DECREASE

Plastics reduced by 12% miscellaneous items by 10% and wood by 1%

MAJOR TYPES OF RUBBISH REPORTED



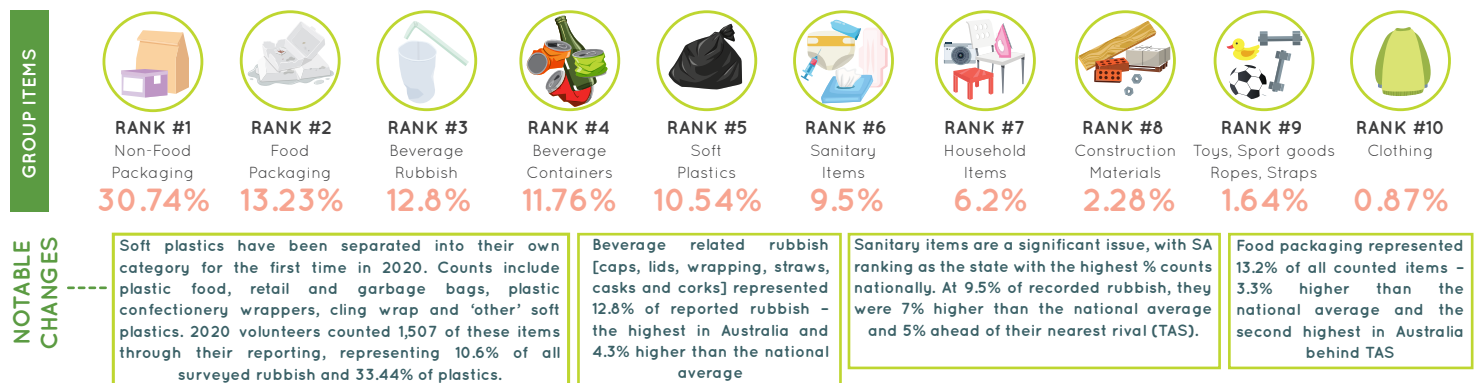
2020 participation reflects the impact of COVID-19 on volunteer capacity to join with their neighbours and friends to clean up their favourite locations.

Despite local lockdowns and restrictions, SA volunteers continued to Step Up to Clean Up with a 5% increase in the number of registered activities across the state.

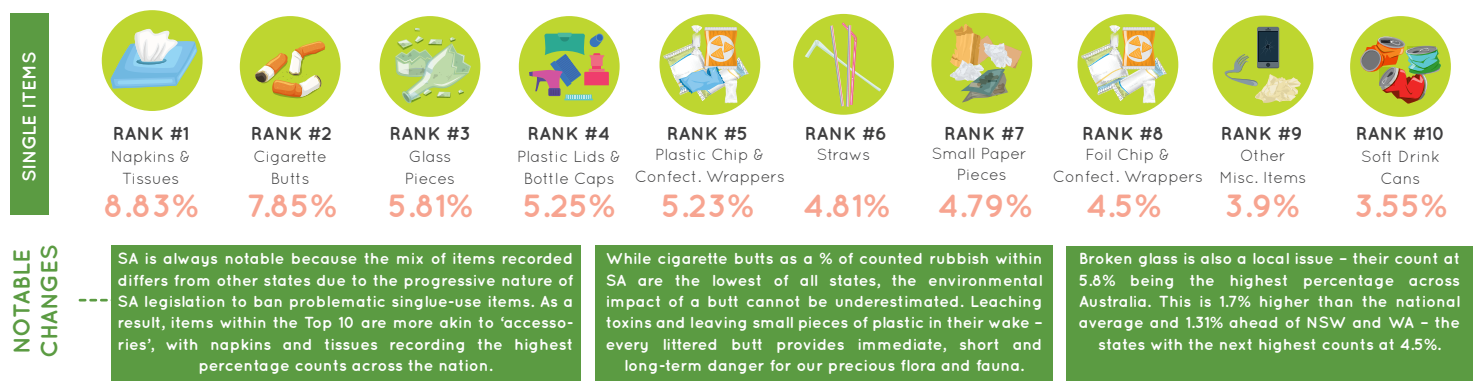


This clearly demonstrates the importance volunteers place on local parks, streets, waterways and bushland and we applaud the estimated 35,439 volunteers who donned a mask and gloves during 2020.

TOP TEN RUBBISH ITEMS AS A % OF THE TOTAL RUBBISH SURVEYED

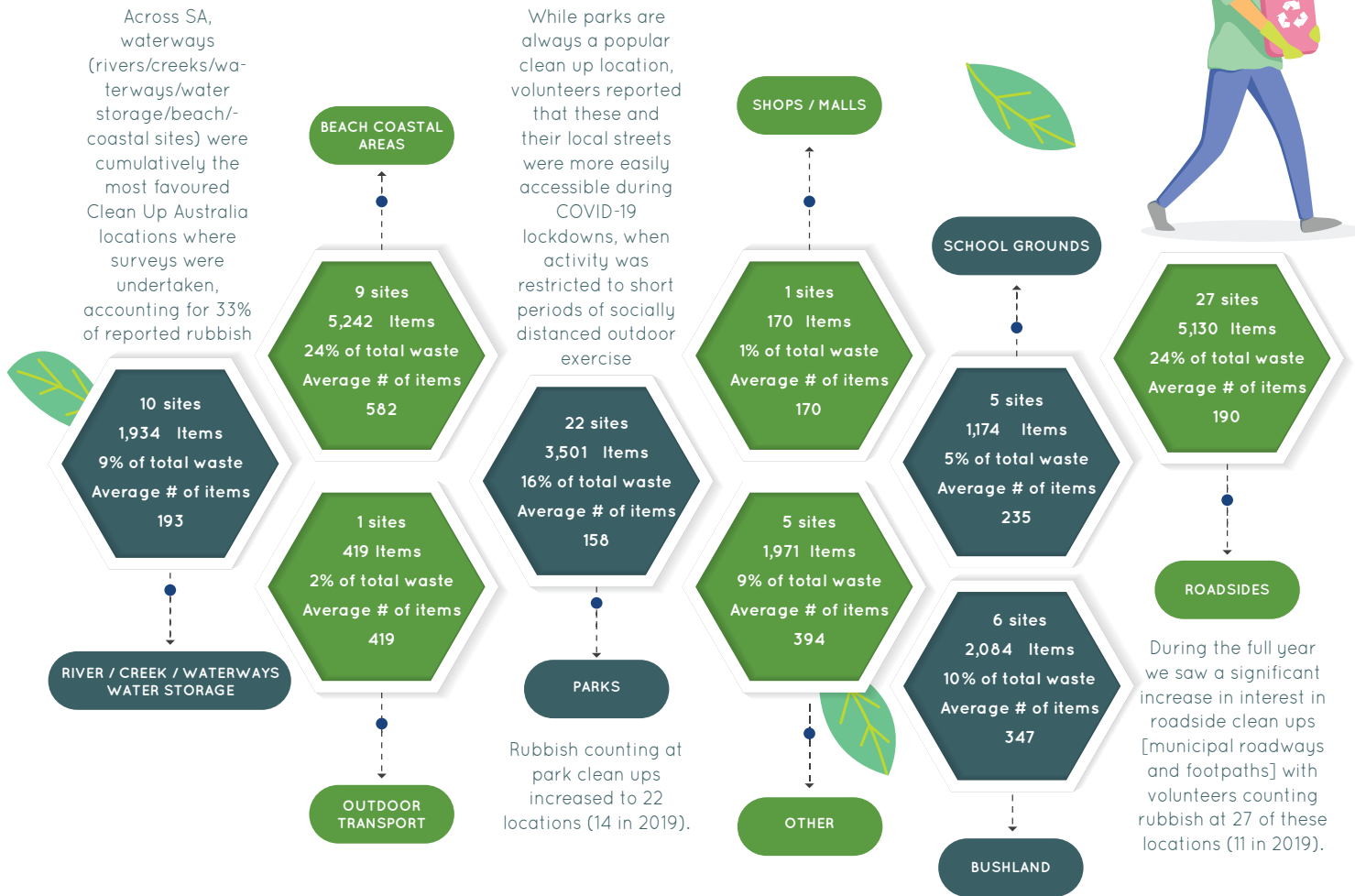


*Grouped Data made up 99.7% (99.1% in 2019) of surveyed rubbish



*Individual Item Count Top 10 data = 54.5% (53.5% in 2019)

FAVOURITE CLEAN UP SITES



Plastics were the rubbish type most commonly reported across SA waterways, representing 32.5% of the total rubbish counted. Once again plastic items were the dominant rubbish type reported at parks and roadsides - representing 44.6% of rubbish reported in parks and 29% of that counted along roadsides.



Founding Partner



Partners



Media Partners



Suppliers