

WA

RUBBISH REPORT

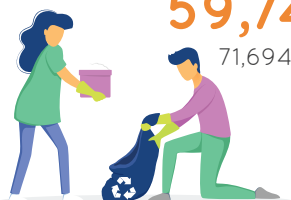


The 2020 Rubbish Report is a snapshot of rubbish removed by Clean Up Australia volunteers. Across Western Australia, the Report is based on the count of 37,033 rubbish items from 105 surveyed locations (34,504 items from 83 locations in 2019).

ESTIMATED VOLUNTEERS:

59,749

71,694 in 2019



1,506.8

ESTIMATED UTE LOADS
1,392.6 in 2019
REMOVED



VOLUNTEER HOURS:

119,498

143,388 in 2019



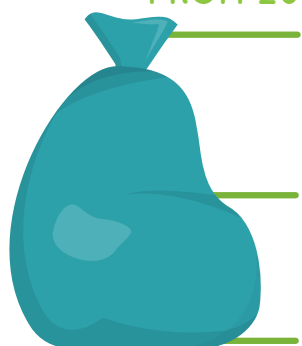
SITES REGISTERED:

602

653 in 2019



NOTABLE CHANGES FROM 2019



% INCREASE

As a percentage of types of rubbish reported, **miscellaneous items** increased by **3%**, **glass** and **polystyrene** by **1%**

14.7%

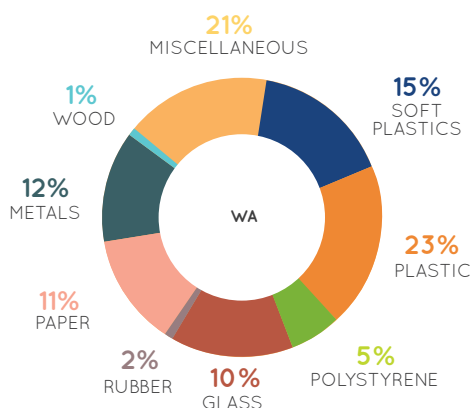
SOFT PLASTICS
Soft plastics reflected 14.7% of the plastics count - 1% above the national average

% DECREASE

Plastics decreased by **2%**, and **metals, paper & rubber** each by **1%**

Wood remained consistent as a percentage of counted rubbish

MAJOR TYPES OF RUBBISH REPORTED



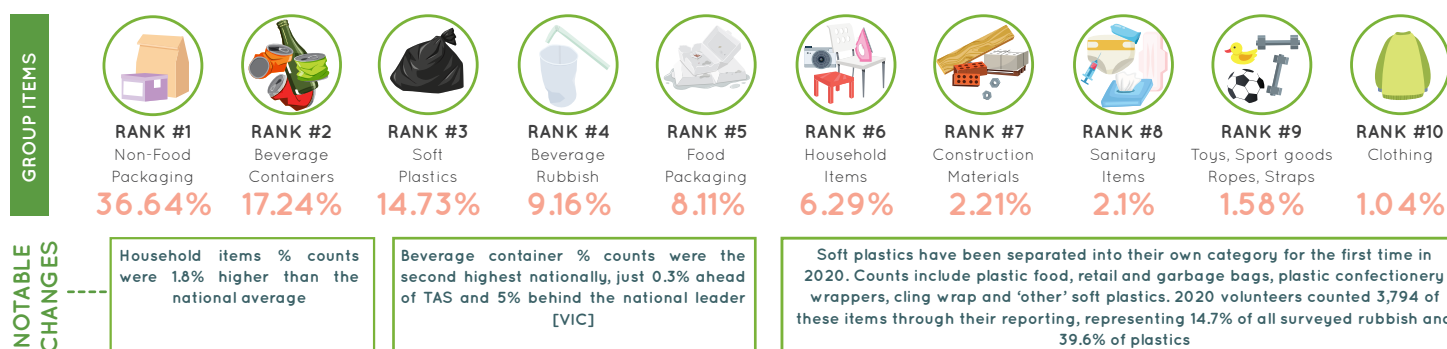
2020 participation reflects the impact of COVID-19 on volunteer capacity to join with their neighbours and friends to clean up their favourite locations.

Despite local lockdowns and restrictions, WA volunteers continued to Step Up to Clean Up with only an 8% decrease in the number of registered activities across the state.

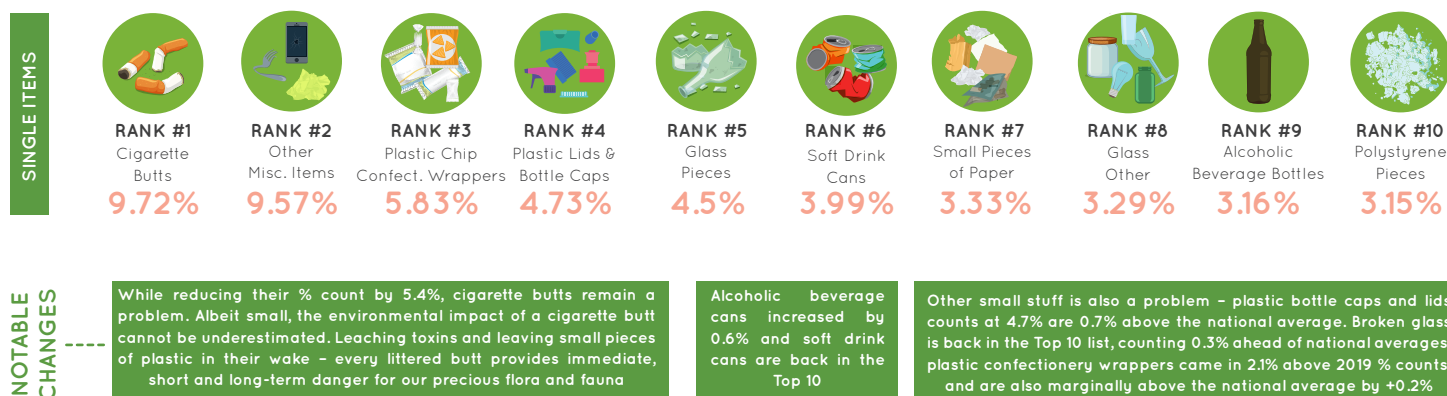


This clearly demonstrates the importance volunteers place on our local parks, streets, beaches, waterways and bushland and we applaud the estimated 59,749 volunteers who donned a mask and gloves during 2020.

TOP TEN RUBBISH ITEMS AS A % OF THE TOTAL RUBBISH SURVEYED

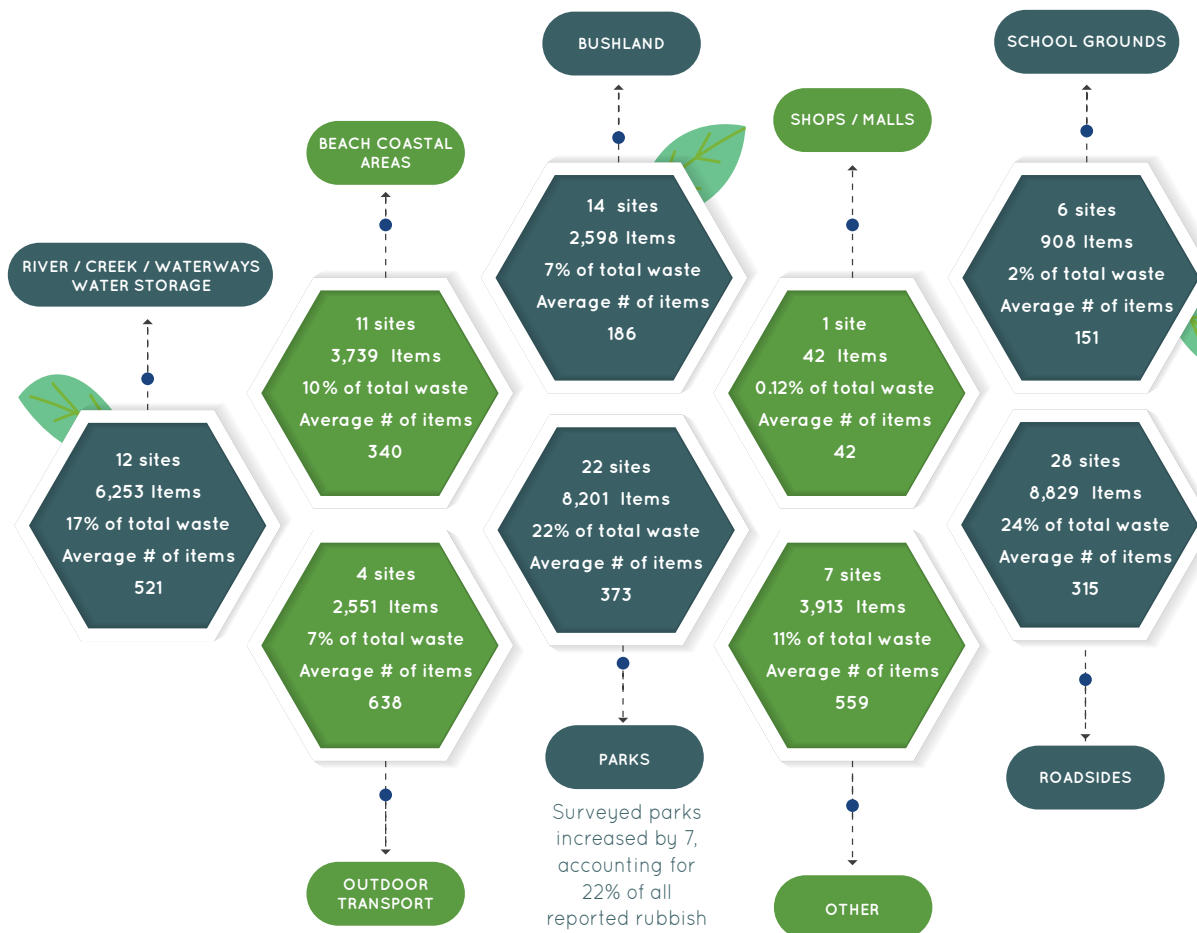


*Grouped Data made up 99.1% (98.9% in 2019) of surveyed rubbish



*Individual Item Count Top 10 data = 51.3% [51.4% in 2019]

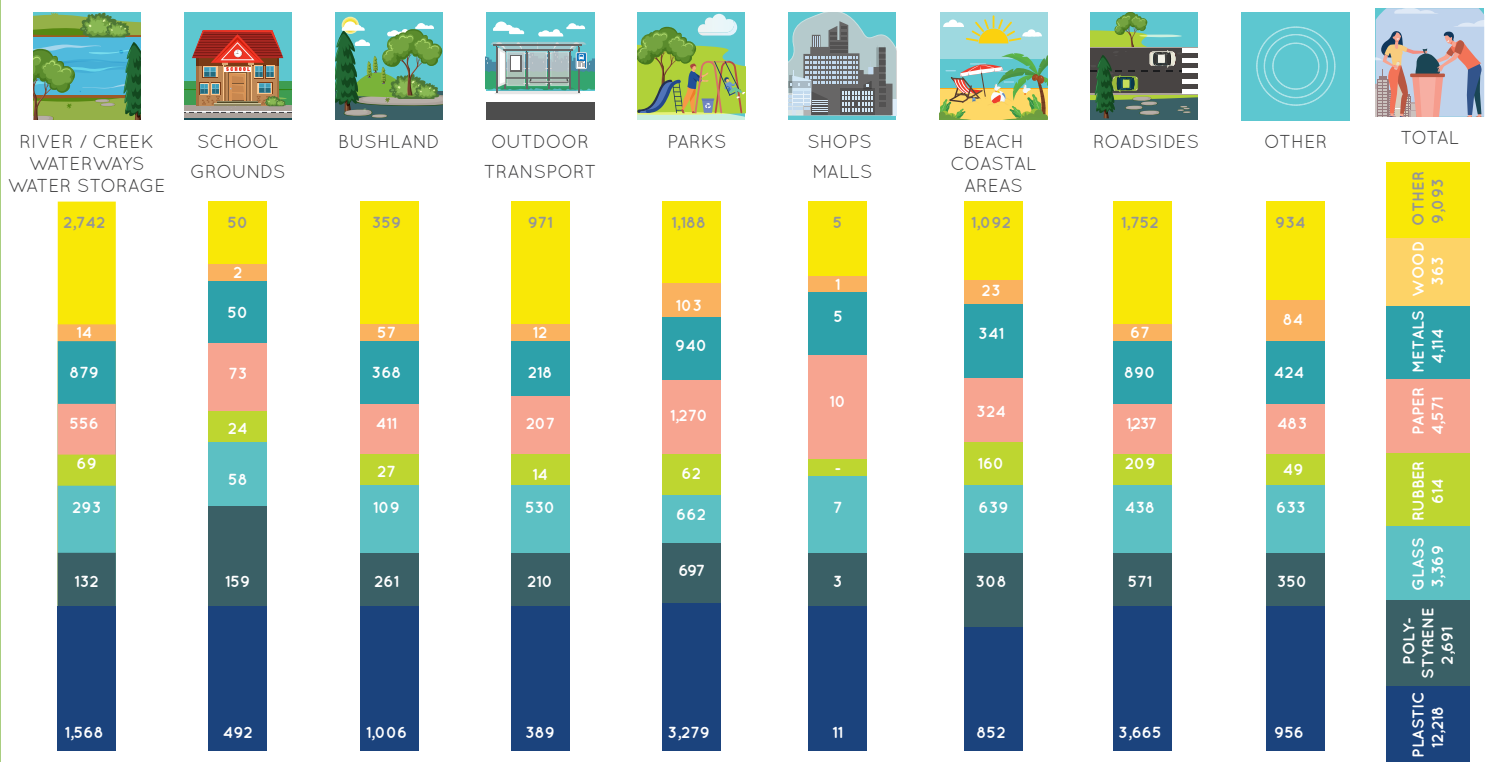
FAVOURITE CLEAN UP SITES



Across WA, municipal roadsides, which include footpaths and verges, were the most popular site surveyed by volunteers, increasing from 9 locations in 2019 to 28 locations this year and accounting for 24% of all reported rubbish

While parks are always a popular clean up location, volunteers reported that these and their local streets were more easily accessible during COVID-19 lockdowns, when activity was restricted to short periods of socially distanced outdoor exercise. Plastic items were the dominant rubbish type reported at these locations - representing 40% of rubbish reported in parks and 41.5% of that counted along roadsides

Across all locations, plastics were the rubbish type most commonly reported, representing 33% of the total rubbish counted



Founding Partner



Partners

sodastream



Media Partners



Suppliers