



WOOD SPECIE OPTIONS

At Del-Wood Kitchens we take great pride in using only top quality materials in our cabinetry. The beauty of wood is in the variation and character of its grain and the subtle variation in its color hues. Because no two trees are the same, some differences in grain and color will appear. These variations are considered normal in the cabinetry industry and have never been considered defects. Natural finished cabinetry will show the natural grain and color variation more than cabinetry that has a stain applied. We recommend that you inform your customer of these characteristics.

Standard Woods

- BIRCH -** Paper white birch is a closed grain hardwood that varies in color from white to light brown and pale yellow. It can possess some mineral streaks or rift patterns in the grain. This is common in Birch and is not considered a defect. When finished in natural, the grain can appear iridescent and the normal wood grain characteristics can be more pronounced. When medium to darker tones are selected, the grain can appear blotchy as the stain is absorbed.
- MAPLE -** Hard white maple is a closed grained hardwood that varies in color from a creamy white to a tan and light brown palette. Some mineral streaks can be present. When finished in natural, it can have some of the same characteristics of Birch. Lighter colors enhance the beauty of Maple as darker stains can give a more blotchy appearance.
- CHERRY -** Cherry is a closed grained hardwood that varies in color from white to red and can have a rich red-brown color. Dark gum pockets and mineral streaks are considered normal, this wood is often stained with medium brown to dark colors to give this wood a more uniform appearance. Exposure to light and the normal aging process will darken the color and reveal the deeper natural beauty of Cherry.
- RED OAK-** Red Oak is a bold, open grained hardwood that varies in color from white to red. Some black mineral deposits and small knots can also be present in this beautiful wood.
- HICKORY -** Hickory offers a bold, energetic look, with plenty of color changes and strong grain patterns. In lighter stains, all of the natural characteristics shine through. Rustic Hickory contains all of the same features, with the addition of knots, swirled grain, mineral streaks and other marks.

Exotic Woods

AFRICAN MAHOGANY - An exotic wood with a deep reddish brown color. The grain can be straight, but is typically interlocking. Working this wood is generally easy but tearing can occur when planing. It often has a shimmering figure. African Mahogany is popular for furniture, cabinetry, joinery, boat building and veneers.

SAPELE - An exotic wood from West, Central, and Eastern Africa. Some consider it as a utility substitute for mahogany due to the fact that it belongs to the same Meliaceae family. It can be a difficult wood to work with, but finishes well. Popular with instrument makers and as a decorative veneer.

WALNUT - A hard, tough wood prized as a cabinet making wood. It is also popular in the United States for gunstocks and rifle butts. Quality furniture, cabinetry, and carving also sees the use of walnut.



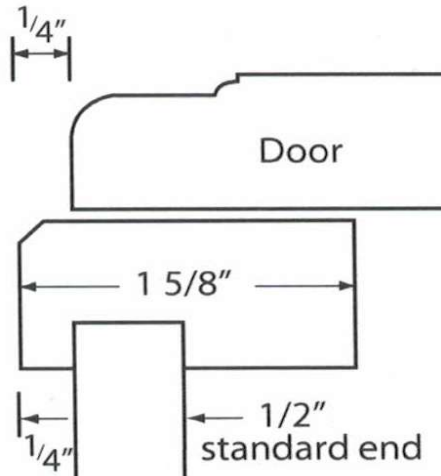
FINISH OPTIONS FOR WOOD SPECIES

	Birch	Red Oak	Cherry	Maple	Soft Maple	Hickory	African Mahogany	Sapele	Walnut
American - Stain	X		X	X					
Antique - Stain	X		X	X				X	
Antique w/Black Glaze	X								
Bark - Stain	X								
Bit-O-Beige - Paint					X				
Bit-O-Beige w/Black Glaze					X				
Bit-O-Beige w/Brown Glaze					X				
Cappuccino - Stain	X		X				X		X
Chestnut - Stain	X	X	X						
Codorus - Stain		X				X			
Coffee - Stain	X		X				X		X
Colonial - Stain	X		X	X					
Colonial w/Black Glaze	X		X						
Colonial w/Brown Glaze	X								
Cranberry - Stain	X								
Cranberry w/Black Glaze	X								
Cremora - Paint					X				
Cremora -w/Black Glaze					X				
Driftwood - Stain	X			X					
Edgecomb Gray - Paint	PER REQUEST ONLY								
English Cherry - Stain	X	X	X	X		X			
English Cherry w/Black Glaze	X		X						
Espresso - Stain	X	X	X						
Feather Gray - Paint					X				
Fireside - Stain	X	X	X						
Frost - Stain (5%)	X			X					
Frost w/Brown Glaze	X								
Galveston Gray - Paint					X				
Gray Mist - Stain (5%)	X								
Gray Mist w/Black Glaze	X								
Hale Navy - Paint					X				
Harvest - Stain	X	X	X	X				X	
Honey - Stain	X			X					
Honey w/Black Glaze	X			X					
Marburg - Stain	X	X				X			
Natural	X	X	X	X		X	X	X	X
Onyx Double Espresso - Stain	X								
Pebblestone - Special Finish				X					
Simply Gray - Paint					X				
Simply Gray w/Black Glaze					X				
Simply White - Paint					X				
Slate Gray - Paint					X				
Stone Hearth - Paint	PER REQUEST ONLY								
Wrought Iron - Paint					X				

Specialty Finish Upcharges - see Information section for details



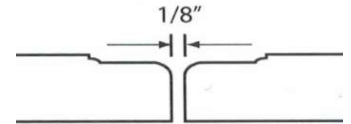
Door Overlay Details



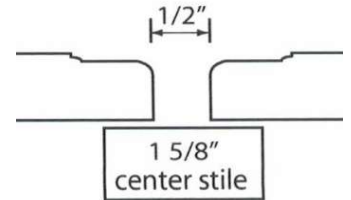
Doors held down 1 3/8" at the top of Wall and Tall cabinetry

Full Overlay

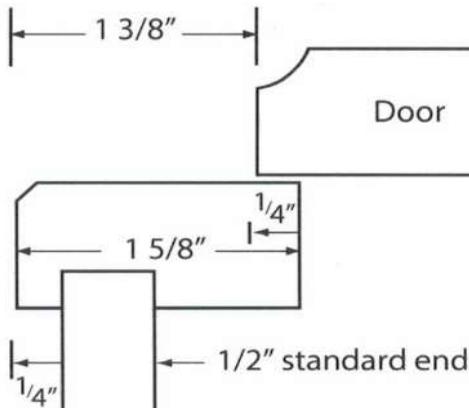
Butt doors with no center stile
24"-2 & 27"-36" wide



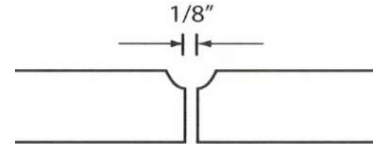
Cabinets that are 39" thru 48" wide
or
Cabinets with optional center stile



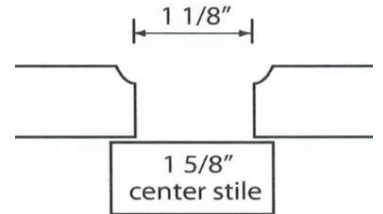
1/4" Standard Overlay



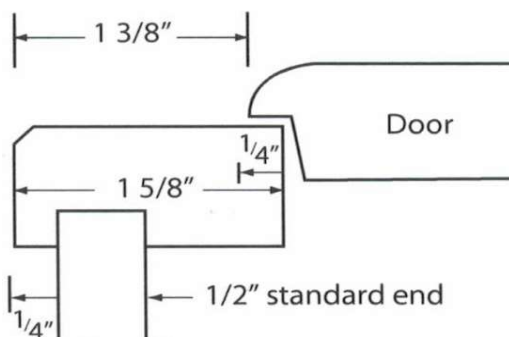
Butt doors with no center stile
24"-2 & 27"-36" wide



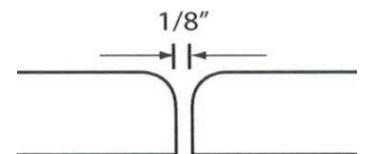
Cabinets that are 39" thru 48" wide
or
Cabinets with optional center stile



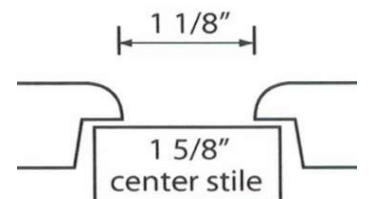
3/8" Lip Inset



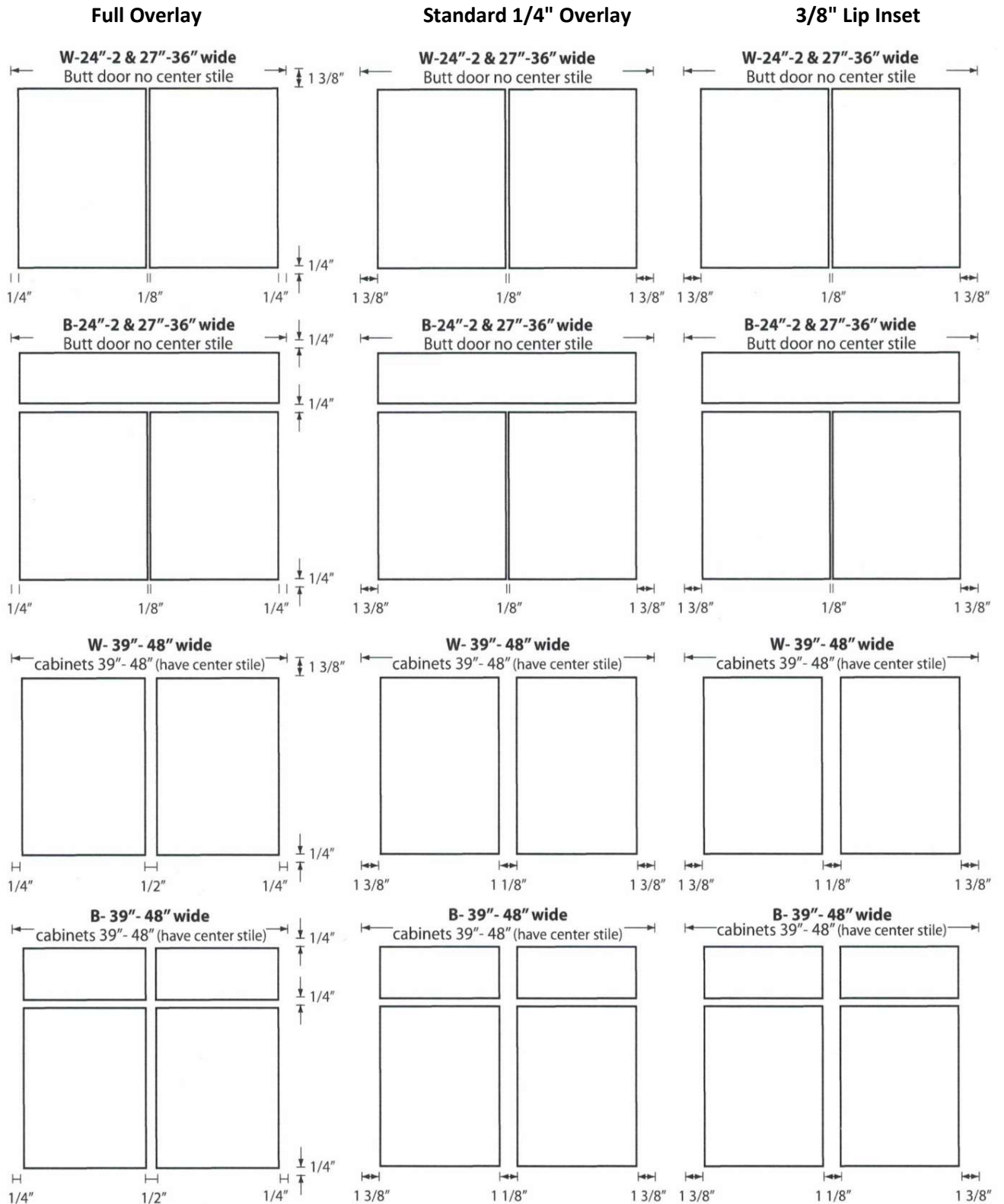
Butt doors with no center stile
24"-2 & 27"-36" wide



Cabinets that are 39" thru 48" wide
or
Cabinets with optional center stile



Butt door spacing is available on cabinets 39" to 48" on Full Overlay and 1/4" Standard Overlay

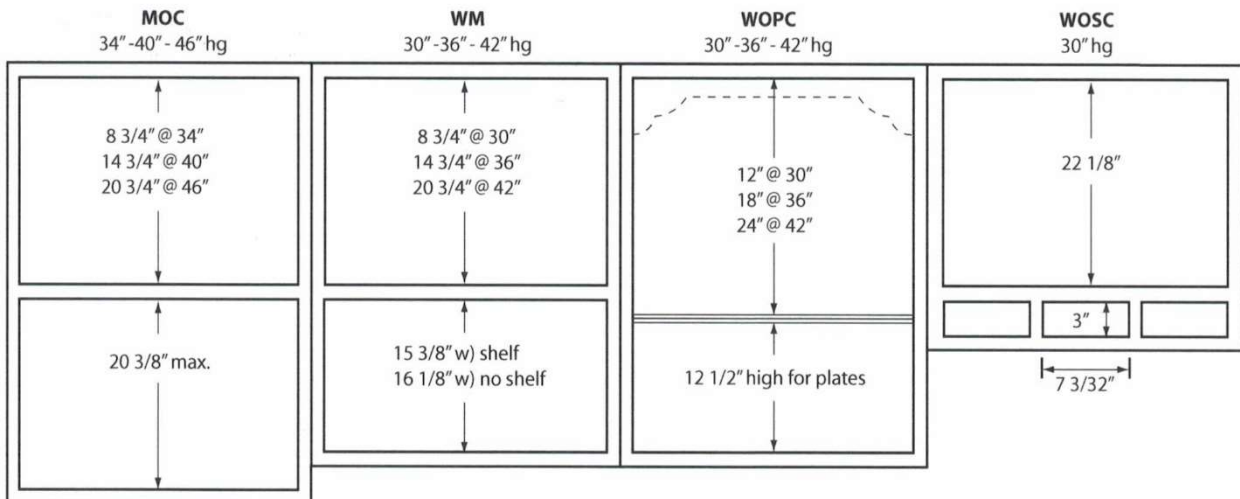
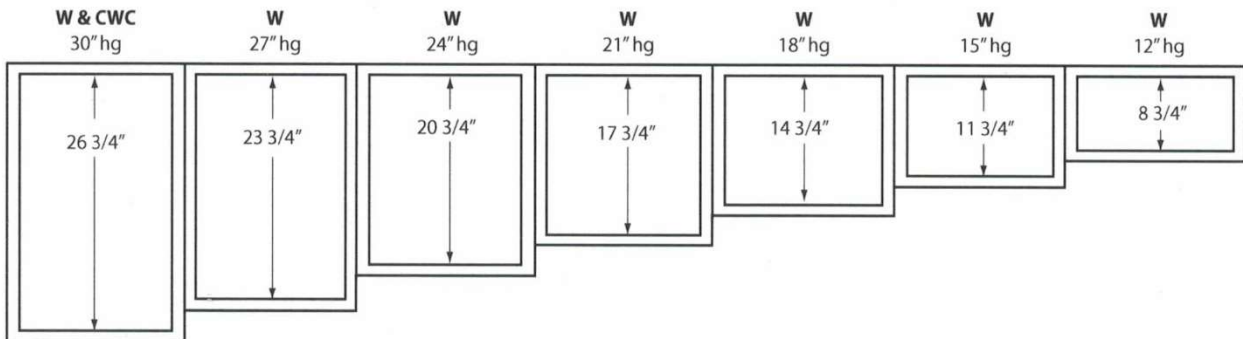
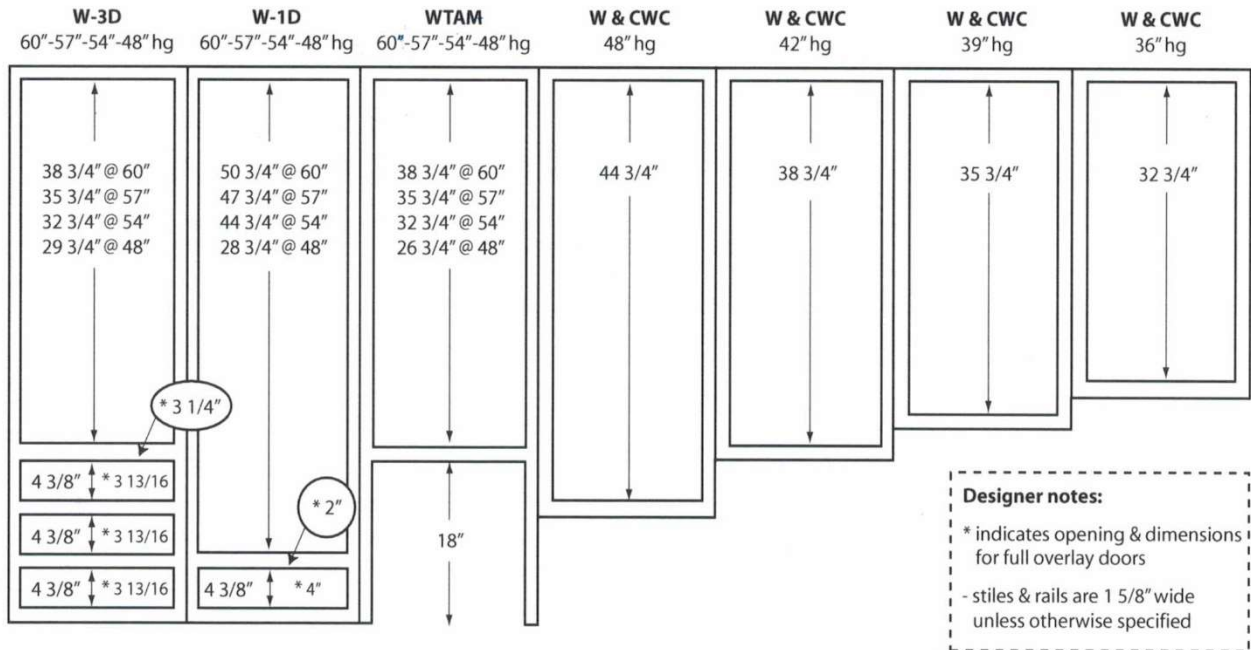


1-5/8" wide center can be added to 24" to 36" wide Butt Door cabinets. Please specify.

Butt door spacing is available on cabinets 39" to 48" on Full Overlay and 1/4" Standard Overlay



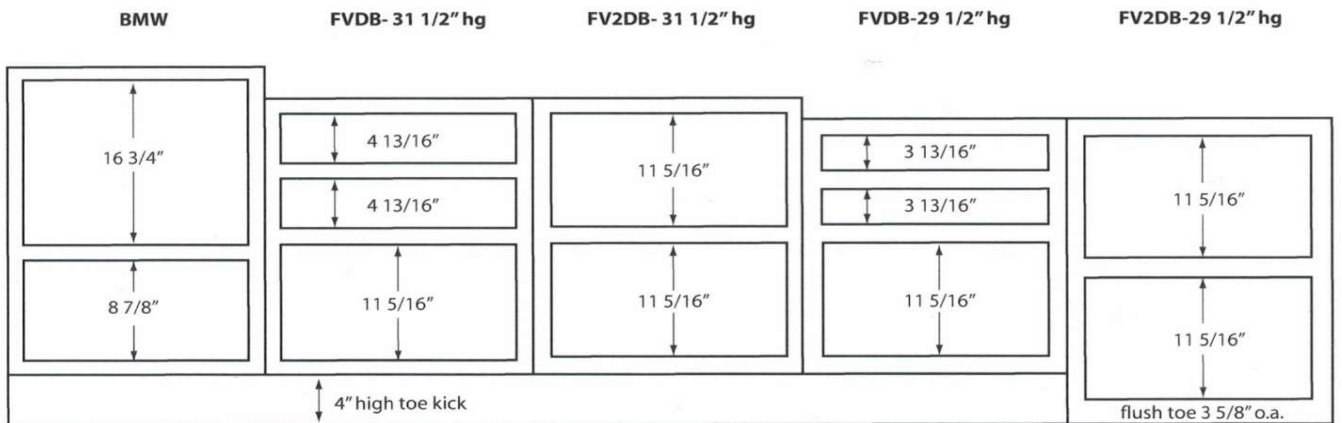
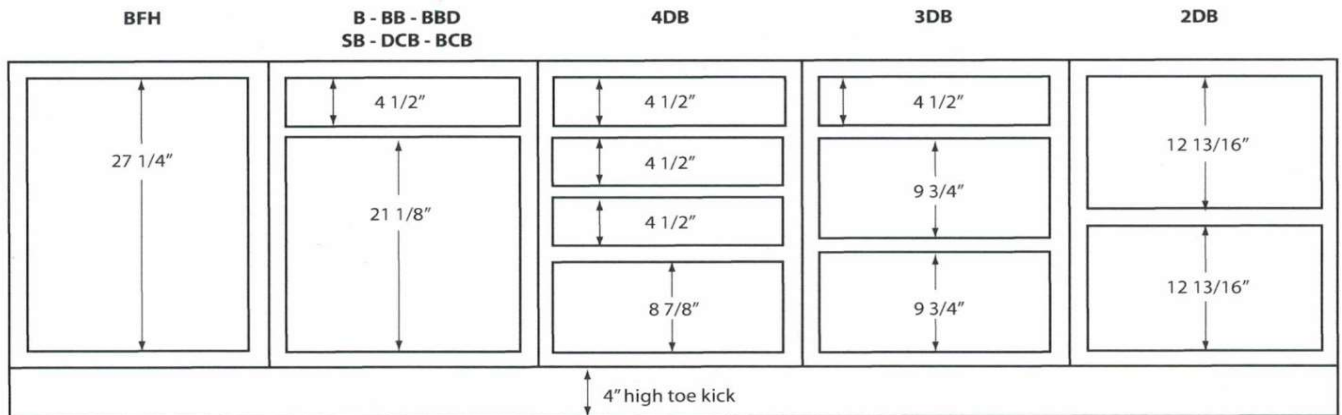
Standard Wall Cabinet Opening



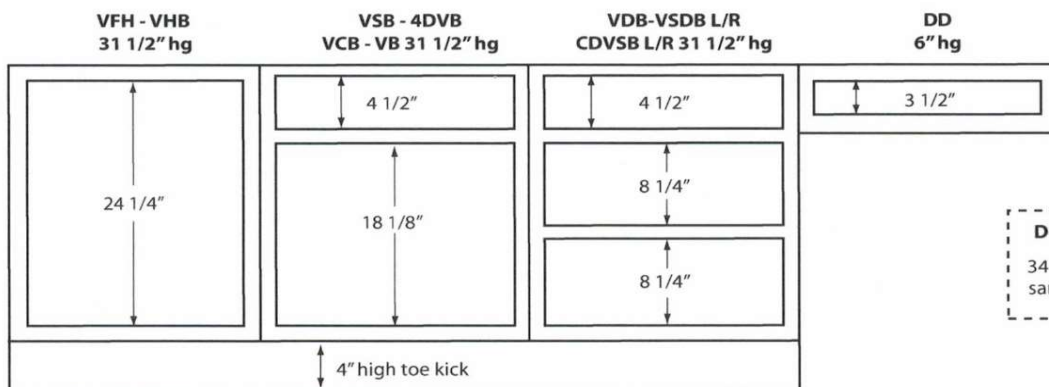
Design or size questions? Contact customer service



Standard Base Cabinet Opening



Standard Vanity Cabinet Opening



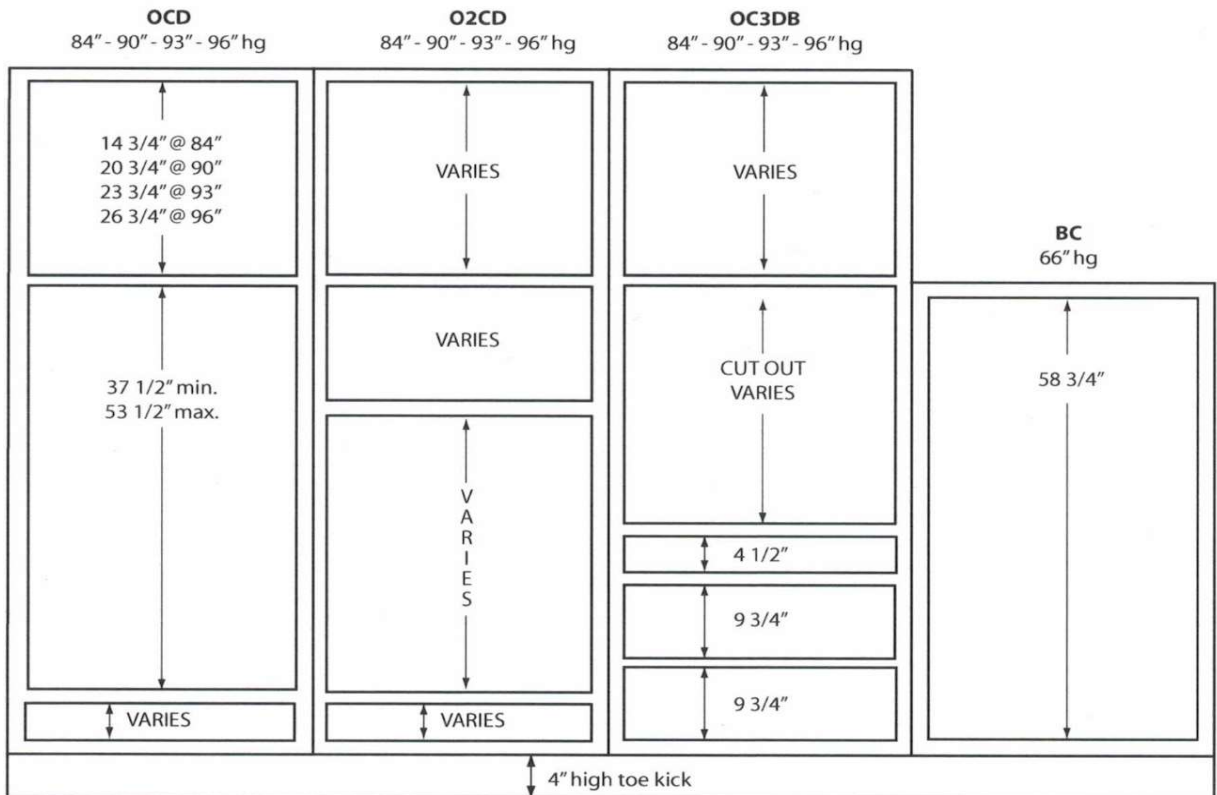
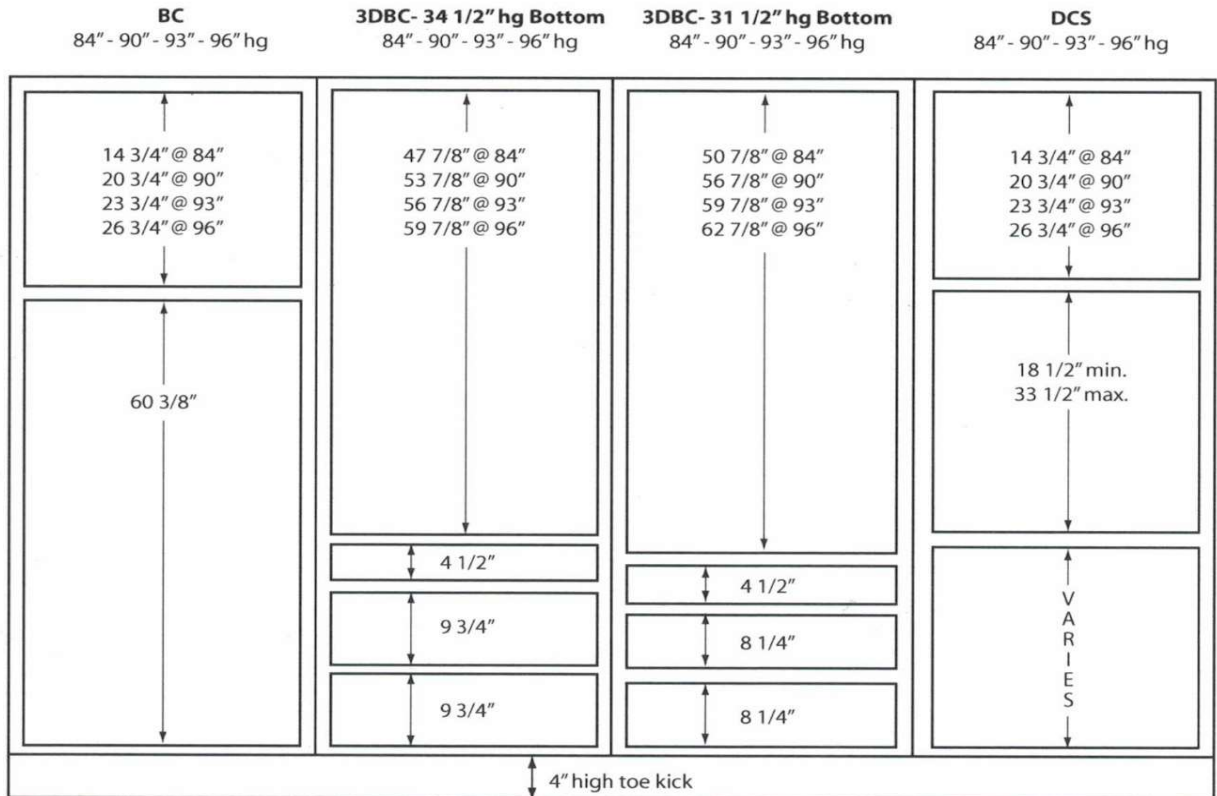
Designer note:

34 1/2" hg vanities have the same openings as Base Cabinets

Need design assistance or details on cabinet dimensions? Contact our customer service team.



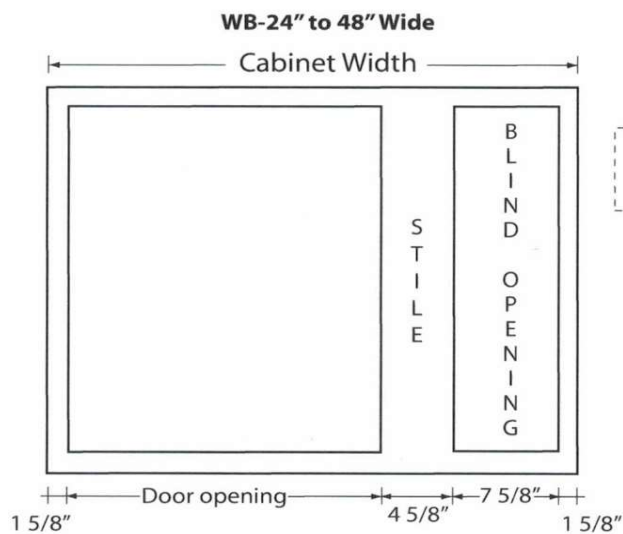
Standard Tall Cabinet Opening



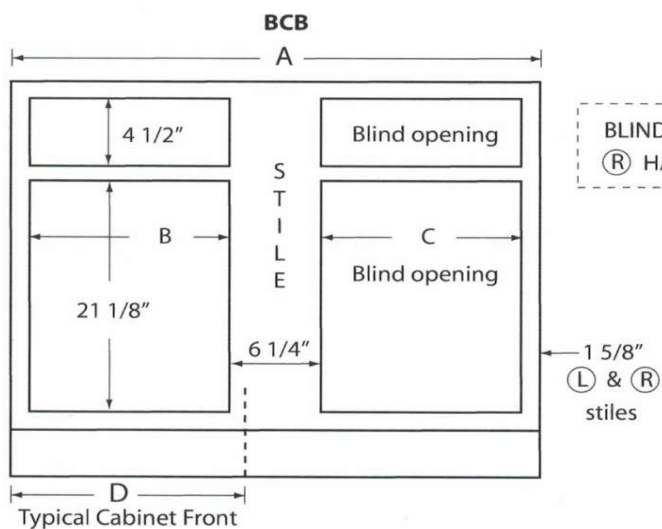
Need design assistance or details on cabinet dimensions? Contact our customer service team.



Blind Wall & Base Cabinet Openings



Cabinet	Door(s)	Opening
24	1	8 3/4"
27	1	11 3/4"
30	1	14 3/4"
33	1	17 3/4"
36	1	20 3/4"
39	2	23 3/4"
42	2	26 3/4"
45	2	29 3/4"
48	2	32 3/4"

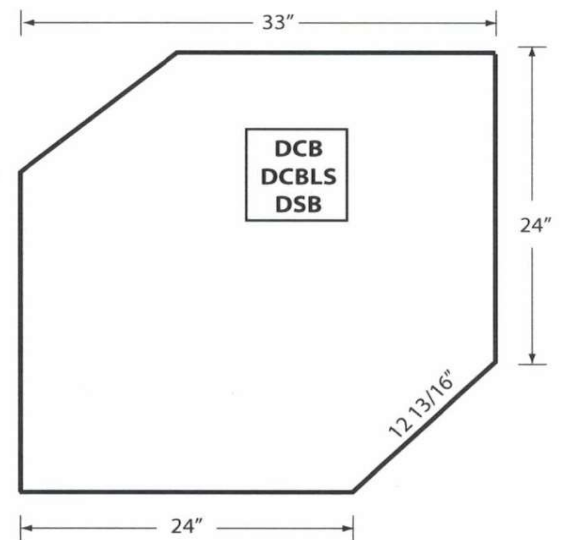
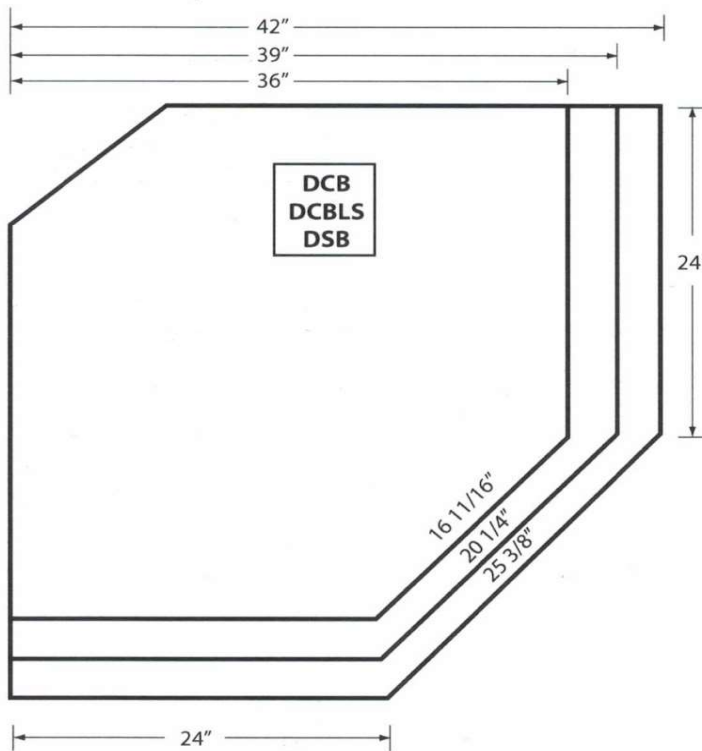
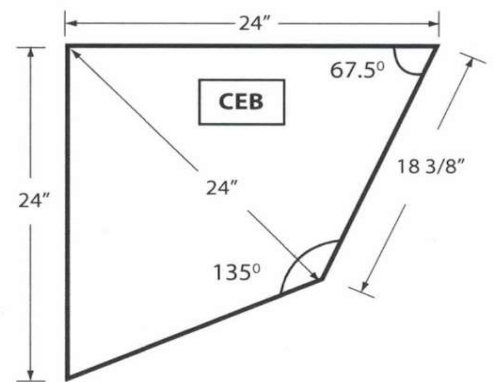
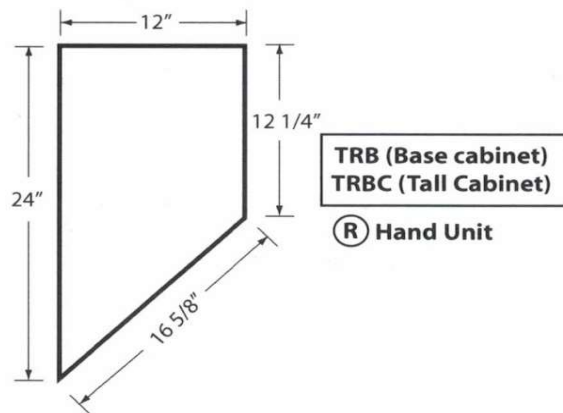
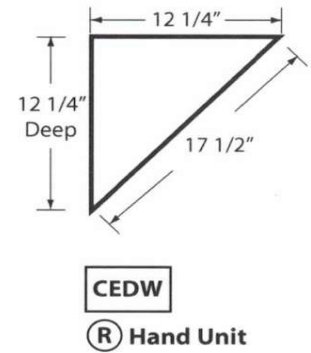
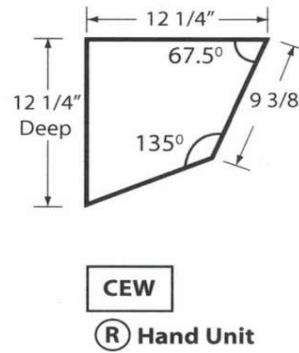
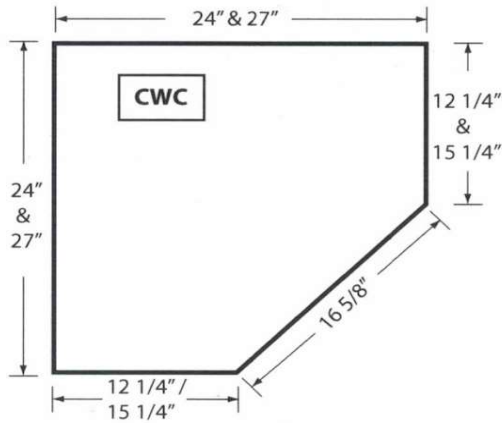


Code-Wall Space	A	B	C	D
BCB - 36/39	27"	8 3/4"	8 3/4"	12"
BCB - 39/42	33"	11 3/4"	11 3/4"	15"
BCB - 42/45	39"	14 3/4"	14 3/4"	18"
BCB - 45/48	45"	17 3/4"	17 3/4"	21"
BCB - 51	51"	20 3/4"	20 3/4"	24"

Need design assistance or details on cabinet dimensions? Contact our customer service team.



Standard Angle Cabinet Dimensions



Need design assistance or details on cabinet dimensions? Contact our customer service team.