



The Maria Mitchell Association

2017 Annual Report

Nantucket's Science Center

mariamitchell.org

AUGUST 21 SOLAR ECLIPSE PARTY - VESTAL STREET



Mission Statement



The mission of the Nantucket Maria Mitchell Association is to promote the legacy of Maria Mitchell and exploration, education, and enjoyment of Nantucket’s land, waters, and skies beyond. In fulfilling our mission, we recognize the historic persona of Maria Mitchell, the foremost American woman scientist and educator of the nineteenth century, and her potential impact on contemporary thought by passing on her legacy of intellectual curiosity, respect for and love of nature, learning by doing, and the ideal of individualism.

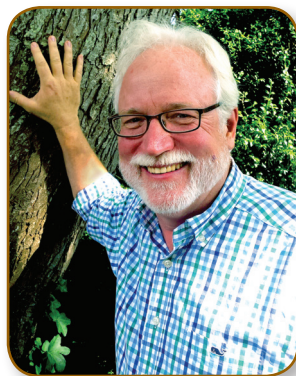
Table of Contents	Page
Mission Statement	2
Executive Director’s Report	3 - 4
Astronomy.....	5 - 6
Natural Science.....	7 - 8
Education.....	9 - 10
Mitchell House, Archives & Special Collections	11 - 12
Facilities.....	13 - 14
Development & Communications.....	15 - 16
Galaxy of Support	17 - 22
Donations & Gifts.....	23
Financial Report	24 - 25
Board, Staff, Interns & Volunteers	26 - 28
Collaborators	29
Research	30
Publications & Presentations	31

Executive Director's Report

Dear Friends and Members of the Maria Mitchell Association:

How Do You Define Impact?

If you have the data, it is relatively easy. For instance, the MMA Astronomy Research Experience for Undergraduates attracted over 200 applications for six positions in 2017. Or, over 150 applicants for seven Natural Science internship positions at the Hinchman House Natural Science Museum and Aquarium, and even thirty applicants for the one Mitchell House internship available for summer 2017.



The MMA has a national reputation of providing meaningful and potentially life changing internship opportunities for college students from around the U. S. that are essential to the operation of the Maria Mitchell Association throughout the year. Each one of these students works with the public directly and supports programs and active research. A large, intelligent, and energetic group of interns work with the 600 or so Summer Discovery Program children, maintain our natural science collections and live animal exhibits, lead workshops and walks, host Open Nights and take on in-depth astronomical research, and the Mitchell House curatorial intern expertly interprets the life and times of Maria Mitchell and her family during tours. Including all the middle and high school volunteers and high school interns, almost eighty students are directly impacted by our internship programs every year. Many of our interns use the experiences gained in our programs and become educators, researchers, advocates, and of course, astronomers. Amazingly, five out of the six astronomy students went on to astrophysics graduate programs in 2017. And we have had MMA interns go on to become Fulbright Scholars, professors, teachers, research scientists, and museum staff. That is quite an impact!

But impact can also be defined qualitatively. You can see it in the enthusiasm and commitment of the children and young adults in our year round and summer programs. According to Dr. Regina Jorgenson, MMA's Director of Astronomy, "My summer as an astronomy research intern at the MMO changed my life. It was my first opportunity to do

Executive Director's Report

real hands-on research under the expert guidance of a professional astronomer. I discovered not only the high level of dedication and hard work required to succeed in a research career, but also the passion and excitement possible with such a pursuit. It was a thrilling summer in all ways — and for the first time I could really envision myself becoming a scientist.”

And Skylar Kardell, a Nantucket High School sophomore, states that, “The Maria Mitchell Association has changed my life in numerous ways. It has not only helped me to become a better naturalist, humanitarian, and citizen of my community, but it has also aided me in becoming a better person. . . I was inexperienced, but there were many people who supported and enlightened me.” The Maria Mitchell Association “feeds” the curious minds of young and old alike. Our programs nurture that yearning sensation and create new worlds of opportunities.

So whether you look at the “hard” numbers or just spend the time and listen to the stories from our students and young adults, the Maria Mitchell Association clearly has a profound impact! Something we can all feel good about. The MMA provides these experiences thanks to your generous support – from you, our members and donors.

With our deepest appreciation,



David Gagnon



This year saw much excitement in the world of astronomy: From the opening of a new window on the Universe with the first ever detection of gravitational waves *and* electromagnetic radiation from the same event – a distant neutron star-neutron star merger – to the event that captured the attention and awe of millions of Americans, the Great American Total Solar Eclipse. While millions of people travelled to experience the path of totality, millions more – in fact, more Americans than watched the Super Bowl – tuned in to television coverage of this spectacular astronomical event, proving yet again that nature's capability to inspire wonder is alive and well.

In 2017, the National Science Foundation sponsored Research Experiences for Undergraduates (REU) program received a record 204 applications from students around the country. After an extensive review process, including phone interviews of the short-listed candidates, six excellent students were selected:

Megan Ayers (Lewis and Clark College) • **Hayley Beltz** (Kalamazoo College) • **Telvin Benjamin** (Suffolk University) • **Rachel Bowyer** (Rice University) • **Bryan Brzycki** (Harvard College) • **Eydon (Niko) Thomashow** (Oberlin College).

Each student was paired with an individual research project – with topics ranging from stars to quasars and galaxy formation to cosmology – and was mentored by Dr. Jorgenson, Gary Walker, and in some cases an additional affiliated astronomer. This summer, we were joined by five affiliated astronomers:

Dr. Terri Brandt (NASA, Goddard Space Flight Center) • **Dr. Suvi Gezari** (University of Maryland) • **Dr. Lindsay King** (University of Texas, Dallas) • **Dr. Devin Silvia** (Michigan State University) • **Dr. Vladimir Strelnitski** (MMO Director Emeritus).

We note with great excitement and pleasure that Dr. Gezari was herself an MMO NSF-REU intern – in the summer of 1998 – and we were thrilled to be able to welcome her back to the island, this time as a mentor to the REU interns. In addition to their traditional science research talk, each affiliated astronomer gave a professional development-style talk to the students. Topics ranged from “Getting into Graduate School,” to “Confronting Stereotype Threat” and these talks proved useful to expanding the scope of the professional development of our MMO students.

At the end of the summer, all students presented short, public talks on their research as part of the MMA Science Speaker Series. In addition, this year saw two students, Niko Thomashow and Hayley Beltz, awarded grants from their own universities to return to the MMO during their fall/winter breaks to continue working on their research projects. Several students turned their MMO research projects into senior theses and all of the rising seniors have applied to continue their studies in graduate programs in Fall 2018.

Astronomy

All students successfully presented research posters at the American Astronomical Society (AAS) meeting in Washington D.C. from January 8-12, 2018. We are proud to report that Hayley Beltz won the prestigious Chambliss Astronomy Achievement Student Award for best poster – one of five awarded out of 100 entrants. Her research poster, entitled, “A High Redshift Survey of Lyman Limit Systems,” was completed under the guidance of Dr. Jorgenson. The AAS also saw the occurrence of the third annual MMO alumni breakfast. Generously sponsored by Princeton Instruments, Planewave, Ball Aerospace, and the Giant Magellan Telescope, the breakfast brought together over thirty MMO alumni and friends.

Despite the unusually foggy summer that forced the cancellation of one of every three Open Nights at Loines Observatory, these events continue to be popular, bringing in about 2,100 visitors and about \$17,500 in income. Daytime tours of the Vestal Street Observatory and solar observing brought a more intimate experience to about 150 daytime visitors. And as usual, the Observatories hosted many private and special events, including an overnight visit by the Harvard College Astronomy Club. February 14 saw the first ever wedding to take place at Loines Observatory – a chilly yet memorable event!

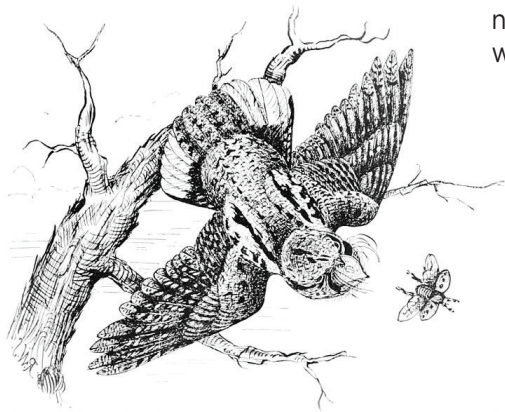
The biggest event of the summer for the Astronomy Department, and indeed for astronomers and many others across the country, was the Great American Total Solar Eclipse, which crossed the country on August 21. In honor of the event, the MMO hosted “Eclipse Week” consisting of talks, pinhole camera making workshops, and the culminating eclipse day event during which MMA staff graciously hosted approximately 2,000 visitors to Vestal Street to observe the eclipse. Support for this event was made possible in part by a generous grant from the AAS in the form of 1,000 free solar viewing glasses that MMA staff distributed. While Nantucket was unfortunately not in the path of totality, Dr. Jorgenson live-streamed her experience of totality in Redmond, Oregon back to the excited crowd at Vestal Street.

Further exciting news for 2017, included a collaboration that spanned several years – and MMO Directors! – and produced a research paper published in the peer-reviewed *Astrophysical Journal*. The work was started as the summer project of 2015 REU student Patrick Drew, advised by the MMO Director Emeritus, Vladimir Strel'nitski. After arriving at the MMO, Dr. Jorgenson obtained complimentary observations using the Keck telescope in Hawaii and was able to supplement the results found by Drew and Strel'nitski. Drew, now a graduate student at the University of Texas, Austin, is the first author of the resultant publication entitled “*MWC349A and B Are Not Gravitationally Bound: New Evidence*,” which includes both Drs. Strel'nitski and Jorgenson as co-authors.

In 2017, the Natural Science Department continued its goals of preserving and displaying the biodiversity of Nantucket County and conducting research on invertebrates, snakes, birds, and marine biodiversity. The Aquarium and Natural Science Museum were open from June 8 through September 1. Visitation at both the Aquarium and Museum eclipsed 2016's totals with a modest increase of 143 visitors at the Aquarium and a larger increase of 366 visitors at the Museum. Museum visitation had not been that high since before the introduction of the properties pass system. By all accounts, this was a summer with exceptional weather and very few rainy days – this negatively impacts admission levels quite strongly. The Aquarium remains the main entry point of guests into the MMA properties. This year's Aquarium interns did a particularly great job of guiding people to visit other properties with their passes and were especially successful at selling memberships.



Research programs consisted of ongoing projects and new projects. The MMA continued to collaborate with the Nantucket Conservation Foundation on the long running Whip-poor-will survey and regional horseshoe crab survey. The American Burying Beetle project was reinvigorated this year with excellent captures of adult beetles in the early summer trapping period when Lou Perrotti, Director of Conservation Programs at the Roger Williams Park Zoo, journeyed out to the island between June 12 – 23. Nineteen new beetles were caught during this trapping period, none of them recaptures from the previous year. Following this success, we provisioned nine pairs and three individuals. In late summer, we captured ninety teneral (freshly molted) beetles, well above 2016's total of two tenerals.

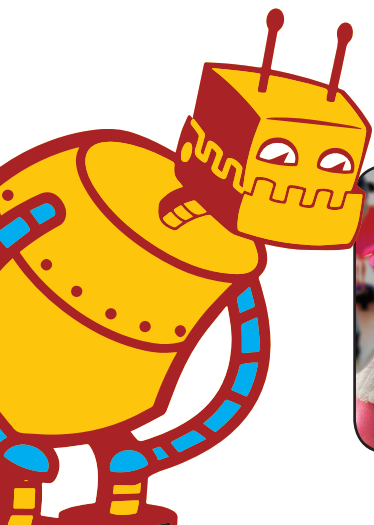


Natural Science



Our major new research program of the year was undertaken in collaboration with the Nantucket Land Council and the Town of Nantucket Natural Resources Department. We piloted a study to assess the population of green crabs on Hussey Shoal in Nantucket Harbor using capture-mark-recapture (CMR) techniques. Our first trial in June did not succeed - we attempted to mark the crabs with white waterproof paint on their carapaces. The marks were not readable after one day so the trial was halted early. We continued to research techniques used by researchers in the field and we purchased specialty crab marking tags from Floy Tags. These are small synthetic tags with unique numbers that can be harmlessly superglued to the carapace of the crab. These worked well in our second, third, and fourth trials in July, August, and September and we generated green crab population estimates for each month from the program called Density 5.0 based on our data collection. We hope to continue and expand this research and collaboration in the summer of 2018 and add a management component in the summer of 2019.

The Nantucket Science Festival was held March 18 from 10 am - 2 pm at the Cyrus Pierce Middle School. Over 375 island children and adults explored science through hands-on activities in robotics, renewable energy and electricity, magnetism, potential energy in engineering, space exploration, sensory crafts, and more. Many organizations across the island also supported this year's event including the Nantucket High School Tech Club, the Linda Loring Nature Foundation, the Nantucket Conservation Foundation, ACK Smart, SmartPower, and the Exploration Station.



School Programs in 2017

Director of Education, Kim Botelho, continued to provide education programs throughout the school year for island children in grades K-5. The MMA offered two afterschool series including “Art Forms” and “Animal Encounters” for grades K-2 and a traveling “Afterschool Discovery” series for children ages 7-11 years. Classroom programs included “Bird Adaptations” for all 4th grade classes at the Nantucket Elementary School, “Trees and the Community” for all 5th grade classes in both public and private schools, and “All About Reptiles” for the Montessori Children’s House of Nantucket. We also provided several field trips including “Beach Exploration” for all public school kindergarteners, “Marine Invertebrates” for 1st graders from the Nantucket Lighthouse School, “Salt Marsh Ecology” for 7th and 8th graders from New Canaan Country Day School, and a “Stars & Senses Night Hike” for 8th graders from the Lake Champlain Waldorf School.

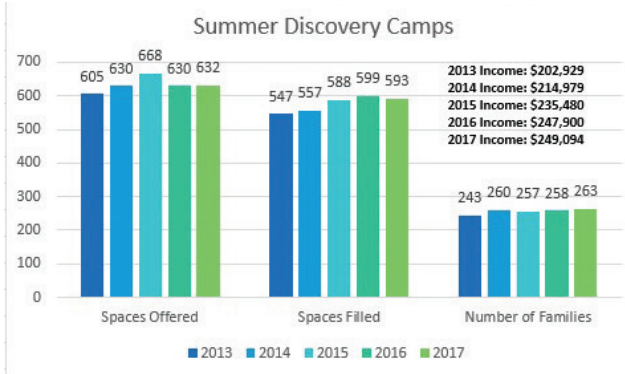
Thanks to the generosity of EGCF, a nonprofit foundation, we were able to provide eight partial scholarships and fourteen full scholarships totaling \$10,636 for our summer Discovery Programs. Patricia Harding, from the Nantucket Elementary School, once again helped make this program possible by connecting us to families with the greatest need. Between the scholarships and discounts for island families, the MMA provided \$40,700 worth of assistance to the Nantucket community.



During the fall of 2017, the Director of Education took significant steps to further enhance the true educational nature of the MMA's Summer Discovery Camps by developing all new sessions for 2018 that are aligned with the Next Generation and Massachusetts Science Standards, as well as other Core Curriculum Standards, and that meet the National Association for Environmental Education's Guidelines for Excellence in Environmental Education. This was done in an effort to form partnerships with colleges and universities in the future that will enable the MMA to hire the best interns enrolled in leading environmental education and science programs around the country. Because of this, the MMA will be rebranding camps to Summer Discovery Programs.

In 2017, the MMA education programs reached more families and generated more income than ever before, and nearly reached the same number of children as 2016. We also provided more discounts to island families and for the first time; 50% of our scholarships were awarded to female campers.

Education



The MMA once again offered camps during April and December vacations. “Explore and Play” was held April 17-21, filled completely with ten children, and had a waiting list. “Ecosystem Engineers” was held December 27-29, and had nine children enrolled. Thanks to the generosity of the Adam Bloom Scholarship Fund, we provided three full scholarships to the spring session and one full scholarship to the winter session.

On March 8, 2017, the Maria Mitchell Association, Director of Education Kim Botelho, and community partner Annie Mendelsohn received recognition from the Massachusetts House of Representatives along with a Secretary’s Award for Excellence in Energy and Environmental Education at the Massachusetts State House. These honors acknowledged the 5th grade “Trees and the Community Program” and was presented by Secretary Matthew Beaton, State Rep. Dylan Fernandes, and Kris Scopinich, chair of the Secretary’s Advisory Group for Energy and Environmental Education.



In 2017, the MMA’s Director of Education, Kim Botelho, continued to serve as a Board Member and Environmental Literacy Representative for the Massachusetts Environmental Education Society (MEES). Share and Shine, an effort launched by Kim in 2016, to share environmental education programs and acknowledge the work of formal and non-formal teachers promoting environmental literacy across the Commonwealth continued to grow. Now, when visiting the MEES website, massmees.org, you can read about environmental education efforts in every county in Massachusetts.

Mitchell House, Archives & Special Collections

The Mitchell House was off and running even by the beginning of January as it hosted numerous programs, special activities, classes, and as always, conducted research, conservation projects, and some special events. One new collaboration was a stone cleaning workshop with the Nantucket Girl Scouts in which we cleaned the stones of the Nantucket veterans in the Veterans' Cemetery at Prospect Hill shortly before the Memorial Day commemorations at the cemetery. The American Legion provided a grant for supplies and all of the stones were cleaned of the lichen and dirt. This gave the Scouts a deeper connection and understanding for their participation in the Memorial Day observance. The curator has been conducting stone cleaning workshops for over a decade.



At the end of June, the Mitchell House along with Wellesley alum, Sally Charpie, hosted a "Seven Sister Tea" to celebrate Maria and graduates of the Seven Sister colleges. A fun afternoon event, we hope to see this expand over the coming years as Maria played an integral role in women's higher education. Further celebrations included Maria's 199th birthday which was a great success again this year with cookies donated by numerous bakeries around the island and our wonderful board members serving the Mitchell House punch – and cookies! Live music, animal demonstrations, and special exhibits were all a part of the celebration.

Classes continued for families and children, as well as several preservation related workshops and walking tours. Tours were conducted by the curator, Mitchell House intern, and volunteers to a larger group than 2016. This included several special group tours. Through outreach via classes, programs, tours, and workshops, the Mitchell House reached almost 1,000 people in 2017. The Mitchell House intern, Sabrina Smith, worked on several initiatives outside of tours and teaching children's classes. She conducted research concerning the family portraits and silhouettes in the Mitchell House and then created bookmark "take-aways" of this information for the public. Smith also worked on conservation projects with the curator and developed some new classes for children. In the fall, the curator worked closely with the MMA's Worcester Polytechnic Institute's student team as they worked on assessing the needs of brand-identification for the MMA, as well as wayfinding issues for the Association. Additionally, she developed and planned a conference off-site for the New England Museum Association with other island non-profits. This off-site was to include a panel discussion and site visits but unfortunately due to an October storm, was cancelled. However, one intrepid attendee from the Vineyard made

Mitchell House, Archives & Special Collections

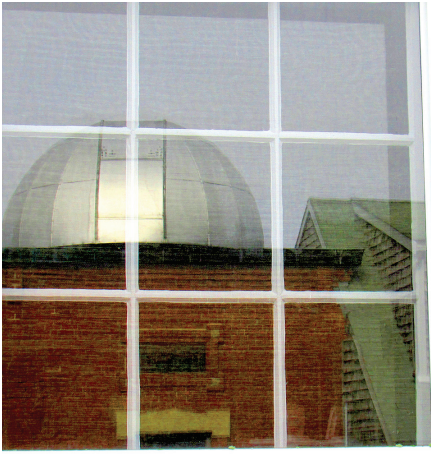
it over so an abbreviated off-site was hosted by the groups with the curator bringing the attendee to various sites – and future collaborations and ideas developed from this off-site of one!

Mitchell House had numerous research inquiries and requests for use of historic images in multiple publications. Happily, *American Eclipse* by David Baron and published by W.W. Norton, was released in June in time for the eclipse. Maria was one of five featured astronomers in the book and it is a must read! David Baron will speak for the MMA in 2018 for the Birthday Speaker Series. Maria and the



MMA were also featured in Dava Sobel's *The Glass Universe* which was released in December 2016. Sobel will be speaking for the 2018 Birthday Speaker Series as well. *The New York Times' T Magazine* featured an article on splatter paint, featuring the Mitchell House's own splatter painted floors and a travel writer wrote a piece on women's history on Nantucket for *Condé Nast Traveler* and mentioned the curator's book, *The Daring Daughters of Nantucket Island*. A Canadian newspaper also highlighted the Mitchell House and Maria in one of its travel pieces. The Mitchell House Curator was asked to write and narrate a piece of the Nantucket Historical Association's exhibit "Out of the Box" concerning Walter Folger's telescope – he being a cousin of Maria Mitchell. And, several exhibitions and exhibits that featured the eclipse and the history of eclipses in the U.S. brought numerous requests for information on Maria and also the use of historic images. Further requests came across the curator's desk from authors and professors in need of information and images for lectures and upcoming books and numerous student requests came from those in the third grade to those at the graduate level.

In addition to her research, writing, and conservation projects for the House and its collection, the curator continued to focus on the historic renovation of the MMA Science Library into the MMA's Research Center and plan and implement numerous initiatives for the 200th birthday of Maria Mitchell. These include a scholarship in Maria's name for a graduating senior from Nantucket High School; bringing back a Maria Mitchell book award for a Nantucket High School junior; an exhibit to be held at the Nantucket Historical Association's Whaling Museum in 2018 for which she is writing the text, labels, and panels and choosing the items for display as well as mounting the exhibit with the NHA's curator; locating and inviting speakers for the Birthday Speakers Series in 2018; an expanded August 1 celebration; a women in science on Nantucket panel for Women's History Month and Maria's 200th in March 2018; and the Maria Mitchell Women in Science Symposium and Award. The Symposium is to be held in the Boston area in October 2018 and focus on women in the STEM fields including issues and retention. We hope that it will be successful with up to 225 in attendance and something that will continue in future years as a biennial event. So, it was a busy 2017 – and will be a busy 200th Birthday year!

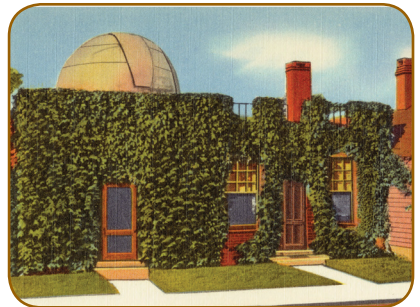


In 2017, the MMA continued to focus on the preservation and repair of all of its buildings, particularly on Vestal Street. The sites have regular repairs that happen every year from wear and tear and then purchases for cleaning supplies for interns and visiting groups, plumbing and electrical repairs, and other minor carpentry repairs. And then each year, we have larger planned improvements.

Research Center: Work continued with the installation of the HVAC system and we had heat by December with the dehumidification, air conditioning, and humidification systems awaiting the plumber's final work in January

2018. A new accessible slope and path to the west side of the building, as well as an accessible door were completed – all of which is required by law. Lab tables were built and existing 1920s cabinets and shelves were retrofitted for the lab space while preserving their historic integrity. Additionally, the cabinetmaker built a microscope station that looks out over Vestal Street fitting it into the existing shelving and window sill. The bathroom was rebuilt to meet accessibility requirements using the original doors, framing, and baseboards. The lathe that was removed from the bathroom walls was saved and re-used when re-plastering the walls that had to be altered to receive the plumbing and new bathroom accessible fixtures. We re-plastered with lime and hair plaster as had originally existed on these walls. The basement was connected by a doorway access created by the mason allowing for easier access to collections and one basement zone for the HVAC system. Interior rooms were painted and new electrical wiring and lighting began to be installed to meet code and the electrical loads that the building will need with the HVAC system and the appliances required for the collections. The MMA is indebted to all the women and men who have been making this project happen in time for our opening in May 2018. They have been generous with their time and attention.

Hinchman House: Work included making updates to the dorm spaces with new curtains, mattress pads, lamps, and where needed, mattresses and bedframes for the interns; repairs to the lab room ceiling and plumbing repairs; painting of the two rear rooms of the House and the halls and rear stairwell; all windows professionally washed inside and outside; mildew cleaned from front trim, gutters, and MMA sign; cleaning of rug in rear



Facilities

museum room, replacement of sewer line to the Town main line; replacement of two front downspouts with copper; structural repairs to front porch; repair of two broken historic sashes. Several of these items were grant funded.

Drake Cottage: This building received some focus as well in 2017 with new carpeting installed in the Administrative offices replacing the original and much worn carpet, replacement of a rotted rear door, repairs to the building's sprinkler system, and new stone for the parking area.

Maria Mitchell (MMO) and Loines Observatories: These buildings saw some minor behind the scenes repairs and removal of the peastone in the driveway at Loines to make it better for solid footing and accessibility.

Aquarium: Repairs were made to replace missing and rotted deck planking and balustrades, the broken trellises under the decks were removed, post caps were replaced where needed, repairs were made to the doors on the rear buildings, the front building's door threshold was replaced because it was rotted as was some of the trim, repairs were made to the front post and porch, holes were made in the rear east building so that the chillers used for the tanks could be placed outside so that they do not overheat nor heat up the building and the aquarium tanks inside.

Washington Street Properties: At this site, we had our annual staff cleanup of the main building that is used for programs and lectures, kayak racks were built by James "Ben" Miles at cost, and a new mini-fridge was purchased for the cottage used for summer staff.

Astronomer's Cottage: In early 2017, we wrapped up the re-shingling and re-roofing of the building, added a gutter to the rear dormer for better rainwater runoff from the roof, made some minor interior and exterior repairs, made repairs to the furnace which also serves the MMO, installed a new picket in the rear yard, replaced the rotted front door with a "new" front door– a gift from our neighbor at 5 Vestal Street which was once on their house. Several items completed were grant funded.



Work on the new Research Center is nearly complete and is due to open in the spring of 2018.

Development & Communications

The Department continued to expand on opportunities for individual and corporate sponsorship. A new Business Opportunities booklet was created in advance of the 2018 season. The new booklet was resized to make it more user-friendly. It also provides ten different sponsorship opportunities (compared to six) with a range of support from \$250 to \$25,000.

The Nantucket Red-Tie Soirée remains the largest fundraising event of the MMA. The 2017 event was a sold-out event with 250 guests in attendance. A robust silent auction, along with business and individual sponsors made the event the most successful to date. The special guest at this year's Nantucket Red Tie Soirée was *National Geographic* photographer, Michael Melford. While on Nantucket, he offered a field photography course for ten individuals with program fees benefitting the MMA.



This year, the MMA hosted fifteen separate fundraisers. Each event was designed to strengthen our existing donor base while also broadening our circle of influence. Fundraisers were held by several past and present board members. They were also incorporated into public events, such as "Release Day" at the Aquarium and the breakfast meeting at the American Astronomical Society.

To raise additional funds, the MMA has started an Adopt-An-Animal Program. Each adoption is \$75, with a choice of a barn owl, painted turtle, milk snake, lobster, or spring peeper. Each kit comes with a certificate of adoption, a stuffed animal representing the adopted species, a guide to amphibians on Nantucket, a metal button, a fact sheet about the animal, a note from the Executive Director and property passes to MMA. The kits will be sold in the gift shop seasonally and online all year long.



Development & Communications

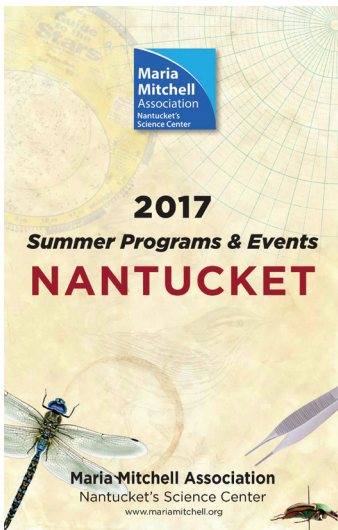
The Department is preparing to maximize the publicity surrounding the 200th birthday of Maria Mitchell in 2018. Plans are underway to hold a series of events, each to honor and celebrate her milestone birthday. These events include a new fundraiser along the harbor front, an expansion of the Nantucket Red-Tie Soirée, a special speaker series, and other smaller fundraiser events. The goal is to use the upcoming birthday year to maximize donations and awareness of both the MMA and her legacy.



The Department prepared the 2017 Summer Program & Events Guide. The Guide lists all of the summer programs, camps and special events for the upcoming summer season. The book production and distribution was supported by thirty-two island businesses, each paying \$250 as a sponsor. A total of 3,000 books were printed and distributed.

The MMA has had substantial success with grants this year. While a good portion of the grants were from familiar sources, we have made gains with new foundations that will potentially help the MMA expand this area of support in the future.

Advertising for the 2017 season included the use of print, multi-media, electronic, and radio. The MMA also had a double-page spread in the November issue of *Nantucket Today* magazine. Ads specific to camp registration ran weekly from April through mid-July in the *Inquirer & Mirror*. Print ads were placed in the calendar sections of the island's newspapers, each advertising a program or special event. Aboard the HyLine Ferry, ads were displayed on monitors aboard the ferry and in the terminals. Radio ads ran from June through the end of August and focused on a variety of programs and events.



The department continues to work at establishing the brand of "The Maria Mitchell Association – Nantucket's Science Center. The advertising and marketing materials have started to have a consistent and clear style associated with the MMA. Font types, colors, and styles continue to be refined in the MMA's collateral material and advertising. Discussions for replacing older signs and exhibit materials are underway for implementation in 2018.

Galaxy of Support

2017 Donors and Supporters

We strive for accuracy in this list. If your name has been omitted or listed incorrectly, please let us know at (508) 228-9198 or by email to gdonnelly@mariamitchell.org.

The Nantucket Red-Tie Soirée

Individual Sponsors

Corona Borealis (\$15,000)

Bebe Archibald Poor, D.V.M., M.S.

Ursa Major (\$5,000)

Anna-Karin & David Dillard

Toni & Martin McKerrow

Ursa Minor (\$2,500)

John & Tricia Hartner

Bruce & Lisa Lawler

Judy & John MacLeod

Deb & Peter Manus

Michael & Joan Nelson

Gayle & Joseph Santucci

Cassiopeia (\$1,000)

Arzak Foundation

David H. & Beverly Barlow

Alan Bell

William & Ginny Birch

Howard & Maureen Blitman

Robert & Eileen Butler

Laura Debonis

Francis Falck

Chris & Missy Griffiths

Amy Hauk & Scott Dehm

Michael & Tina Jemison

Barbara Jones

Peter & Maria Kellner

Judy Lee & Robert

Schwarzenbach

Ann & Hardy Oliver

Michael & Sally Orr

Robb & Mary Ann Peglar

Roger & Kathryn Penske

Nathaniel & Melissa Philbrick



Cassiopeia Continued

Douglas Horst & Maureen Phillips

Eileen Rudden & Josh Posner

Quidley & Company

Susan & Dennis Shapiro

Georgia Ann Snell

Esta-Lee & Harris Stone

Ned & Merrielou Symes

Hannah Wallace

Dr. Tim & Helene Weld

Soirée Donations

Bartlett's Ocean View Farm

William & Kathie Beattie

Dennis & Anne Cross

Fay Gambee

Anne & John Kennedy

Diana Regan

Derek Till

Intern Sponsors

Francis Falck

John & Margaret Falk

Henry Gewirtz

Chris & Missy Griffiths

Joan & Philip Gulley

Nantucket Frameworks

Harris & Esta-Lee Stone

Donald & Deborah Van Dyke

Soirée Business Sponsors

Gold Sponsor (\$5,000)

Harbor Fuel

Nutter, McClennen & Fish LLP

Telescopes of Vermont

The Trinity Collection

Bronze Sponsor - \$1,500

Fisher Realty

Hingham Institution for Savings

Harbor Fuel

Nantucket Bank

Polar Beverages



Galaxy of Support

Supporting Members

Centennial (\$2,500)

Susan & Michael Baer
David Swope & Anne Harrington

Galaxy (\$1,000)

Jennifer & James Bradner
Scott Dehm & Amy Hauk
John & Margaret Falk
Thomas & Donna Jarecki
Suba Laureen & Jon Edens
Mary Longacre & Myra Marsocci
Kevin & Elizabeth McMeen
Marlin & Ginger Miller
Keith & Betsy Wilson
Robert Wright

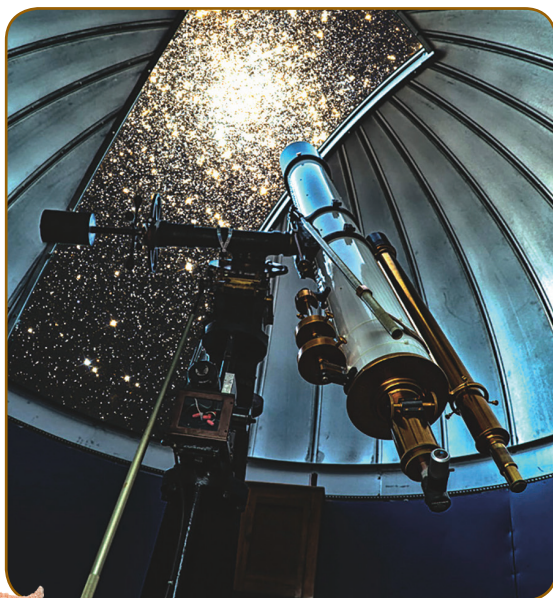
Supernova (\$500)

Carrie & Leigh Abramson
Jeanine & Alastair Borthwick
William Porter & Margaret Davis
Robert Dean & Marianne Felch
Angel & J. Pepper Frazier II
Karoly & Henry Gutman
Edmund & Barbara Hajim
Margeret & Terry Lenzner
Miriam & Herbert Mittenenthal
John & Caroline Osborne
Gerald Platt
Maureen Ruettgers
Rob Adams & Meg Succop
James Meehan & Patricia White

Nova (\$250)

Mariann Berg Hundahl Appley
Allan Bell
Beverly & David Barlow
Katherine & William Beattie
Susan & Howard Bloom
Allison & Chris Bovard
Anne Marie Bratton
Curt & Christine Burwell
James Carey
Deirdre & Francis Carr
Julie & Mark Crosno
Dennis & Anne Cross
Anne Delaney & Chip Carver
Lisa & Porter Dawson
David & Jenn Falk
David & Vinita Ferrera
Herb & Mary Frerichs
Robert & Barbara Friedman
Peggy Gilfof
Peter Ginn
Margaret & John Goldman
Dorothy Hesselman

Elizabeth Jacobsen
Julie Kaufman
Sonya Keene & John Moy
Mariko & Matthew LeBaron
Richard & Carol Lowry
Gina MacArthur
William & Barbara Maple
Paul & Susan Meister
Marlin & Ginger Miller
Julia & Scot Millay
Michael & Julia Milone
Iris & Earl Mix
Tracey Morzano
Ellen & Sam Phelan
Maureen Phillips & Douglas Horst
Elizabeth & David Powell
Abrar & Laura Qureshi
Linda Saligman
STARGAZER
Seth & Jennifer Stier
Alisa & Alastair Wood



Galaxy of Support

Annual Appeal

\$10,000+

Archibald Family Foundation
Bruce & Deborah Duncan
Foundation
Barbara & Amos Hostetter
Honey M. Kurtz
Joan H. Manley
Nutter McClennen & Fish, LLP
Meg Reynolds & William McKee
John S. Weatherley Charitable
Foundation

\$5,000 - \$9,999

Charina Foundation, Inc.
John & Margaret Falk
John & Margaret Goldman
Gulley Family Fund
Judy Family Foundation

\$2,500 - \$4,999

Harrington & Constance Bischof
Cox Foundation, Inc.
John Loeb Foundation
Tamsen Merrill
Moose Moss Donor Advised Fund
Michael & Joan Nelson
Seiger Family Foundation
Susan Weatherly Charitable Fund
T Theory Foundation

\$1,000 - \$2,499

Howard & Maureen Blitman
Sally & Richard Charpie
Barbara & James Duffy
Falconwood Foundation, Inc
Ernst & Elfriede Frank Foundation
Geschke Foundation
Nancy Giragosian & Burton Went
Peggy Gilfoy
Chris & Missy Griffiths
Zachary & Lindsey
Gund Foundation

Kevin & Carolyn Holt
Anne & John Kennedy
Richard K. Lubin Family
Foundation
Judy & John MacLeod
Malcolm & Karen MacNab
Stephen & Laetitia Mead
Robert & Tina Miklos
Marlin & Ginger Miller
Tracey & Greg Morzano
Mullen Family Foundation
Jennifer & Tom Pincince
Cary & Elaine Schwartz
H. C. Bowen Smith
Lorraine C. Snell
Giving Account
Thornburg Foundation
Gilbert Verney Foundation
The Hart Walkingshaw Fund
Tim & Helene Weld
John & Mary West

\$500 - \$999

Will Brown Charitable Fund
Leighton Collis
Lisa-Margaret Bryan
Brownell Family Fund
Centerplate-Boston
Culinary Group
CHS Gift Account
Martha & Paddy Farrell
Mary Ellen Ferrel
Deborah, Will, & Christian Masters
Charles & Karen Hale
Harvey Jones Gift Fund
Lucile Hays
JNC Fund of the Saint Paul
Foundation
Kim & Jack Kilgore
Lenzner Family Foundation
Mark & Christa Lopez
Richardson & Pamela Merriman
Suzanne C. & Carl M. Mueller

Donald & Susan Pegg
Roger & Kathryn Penske
MacGregor and Mary Read
ReMain Nantucket
Robert & Denise Schwed
Twin Chimney Inc.
Kelly Williams & Andrew Forsyth

\$1 - \$499

Ancona Family Foundation
Kate Bayer
William & Kathie Beattie
John & Judy Belash
David & Lisa Blatt
Robi & Ruth Blumenstein
Bruce Bond
Edith Bouriez
Chris & Allison Bovard
Bonnie Buratti
Lillian Butler
Diana & Hill Carter
William Cashman
Anna & Erik Caspersen
Susan Chambers
Nancy Chanover
Ara D. Cohen Charitable
Lead Foundation
Bill & Sara Congdon
Gordon & Gretchen Cooney
Amanda Cross
Carol Cross
Jay D'Aprix
Angelo & Lillian Debenedictis
Judy Leonard & Edwin Deane
Porter & Lisa Dawson
William & Sheila Donovan
Dan & Judith Drake
Karen Dubinsky
Mary Jean Dwyer
Richard Farrell
Jascin & Eric Finger
Frerichs Family Fund
David Gagnon & Shelley Dresser

Galaxy of Support

\$1 - \$499 (Continued)

Kathy Gallaher
Craig & Mary Gambee
Eva Gaw
Sally & Joshua Gillenson
Nancy Gillespie & Ulrich Lachler
Mitchell & Nell Goetze
Toby Ann Greenberg
Katharine Robinson Grieder
Jean & Garth Grimmer
Nancy Hench
Christopher & Linda Holland
Leslie Johnston
Suzanne Keating
Betty Kenan
Judith Karpen
Julie Kaufman
Dennis Keller
David & Vicki Kendzionski
Tarini Konchady
Deborah Killen & William Lothian
Carol Kindler
Rick & Sarah Knauff
John & Sheila Lathrop
Melodee Leonardo
Michael & Joyce Levy
Marlaine Lockheed & Steve Frakt
Pamela Lohmann
Thomas Loring
Sherry Lowe
Richard and Carol Lowry
Warren Lyman
Beatriz & Eric Olson
Matt & Lacey Malloy
Samuel P. Mandell Foundation
Jerry Lynch & Karen Marisak
McClure Construction
Katie & Bill McNabb
Robert & Jane McNeil
Polly & Nick Miller
William Miller
Michael & Julia Milone
Christopher & Winnie Mortenson
Emily Goldstein Murphy

Jennifer Nelson
Nancy Newhouse & Kenneth Holdgate
Deborah & Jeff Nicholson
Al & Mary Novissimo
Michael & Sally Orr
Nannette Orr
Ellen Flamm & Richard Peterson
Henry Pfeiffer
Nathaniel & Melissa Philbrick
Lisa Potter
Corky Ranney
Jeanne Riggs
Suse Robinson
Nicholas & Sueanne Rorick
Katherine Rhode & John Salzer
Carl Sangree
John Shea
Mary Anne Sloan
Robert & Sheila Smith
Penny Snow
C. William & Linda Steelman
Ann & Bob Stock
Landey Strongin
Rob Adams & Meg Succop
Eric & Dominicana Stone
Swan Charitable Giving Account
Jonathan Swain
Anne Sweidel
Robert & Dorothy Thompson
Barry & Charlene Thurston
Philip & Janet Villiotte
Alexis & Tedd Van Buskirk
Constanze Von Unruh & Mark Goldman
John & Jean Wagley
Gary & Kathy Walker
Moir Walker
Mary Wawro
Warren Wegner
Weinstein Family
Martha Weille
Carolyn Wells

Lois & Jay Wertheimer
Sandy Wertheimer & Jeremy Primer
Scott Widmeyer
Kate Wilson & Ciaran Byrne
Sue & Michael Young

Grant Support

American Legion - Nantucket Chapter
H.L. Brown Jr. Family Foundation
Cape Cod Five Cents Savings Bank
Care for the Cape & Islands
Community Preservation Act
Bob & Marsha Egan
Anonymous
Mass Development
McCloskey Family Charitable Trust
M.S. Worthington Foundation
Nantucket Golf Club Foundation
Nantucket Shellfish Association
Nutter McClennen & Fish LLP
PayPal Charitable Giving
Post Family
ReMain Nantucket
Robert & Marsha Egan Family Fund
Vassar College
William Froelich Foundation



Galaxy of Support

Gifts in Honor & Memory

In Memory of John H. Cabot
Blakeslee & Jeanne Barnes

In Memory of Edith Andrews
Suse Robinson
Susan Beegel Tiffney

In Honor of Shelley Dresser
Angela Braren

In Memory of Janet Collins
Anonymous

In Memory of Eleanor Martin Allen
Nancy Hench
Deborah, Will & Christian Masters

In Memory of Adam Bloom
Michael & Joyce Levy
Joan H. Manley
Suse Robinson

Natural Science Contributions

Eric Finger - Finger Boatworks
Island Treasures LLC
Mat Anderson - Stillwater Moorings
Roger Williams Park Zoo
Salmanowitz Family Trust

Science Speaker Series Support

Cisco Brewers
Don Allen Auto Service, Inc.
Nantucket Island Resorts

Mitchell House Contributions

Dorothy K. Hesselman

Women in Science Symposium

D. E. Shaw & Co.
Maria Popova: Brainpickings.org
Mount Holyoke College
Nantucket Conservation Foundation

Summer Program Book Sponsors

Accessible Dental, P.C.
Bartlett's Farm
BPC Architecture
Christopher's Home Furnishings
of Nantucket
Don Allen Auto Center
Fisher Real Estate
Freedman's of Nantucket
Glidden's Island Seafood
Hatch's Package Store
Hanley Development
Hingham Institution For Savings
HyLine Cruises
Island Lumber Company
Jordan Real Estate
Life Massage
Marine Home Center

Maury People Sotheby's
Nantucket Architecture
Group, Ltd.
Nantucket Dermatology
Nantucket Energy Corp., LLC
Nantucket Island Resorts
Pinwheels, Inc.
Pioneer Cleaning
Pollacks
The Rose & Crown
Scrimshander Gallery
Sylvia Antiques
The Lion's Paw
The Tile Room
Wicked Island Bakery
Young's Bicycle Shop

SCIENCE SPEAKER SERIES

Location: 33 Washington Street
7:00 PM - 8:00 PM
Free for Members • \$10 for Non-Members

Date	Presenter	Topic
May 31	Ginger Andrews	Barn Owls Were My Siblings
June 7	Owen Nichols	The Effects Of Environmental Variables On The Distribution Of Squid
June 14	Dr. John L. Koprowski	Everything You Wanted To Know About Squirrels But Was Afraid To Ask
June 21	Dr. Emily Goldstein Murphy	Invasive Species And Island Ecology
June 26*	Cindy Pease Roe	Upsculpting Plastic Flotsam Into Works Of Art
June 28	Jonathan White	A First-Hand Account Of Tides From Around The World
July 5	Dr. Thomas Oliver	Tracking Coral Reefs In A Changing Ocean: The National Coral Reef Monitoring Program
July 12	Dr. Phil Duffy	What's Next For Climate Change In A World Of "Alternate Facts"?
July 19	Jill Talladay	Creating A Responsible And Sustainable Environment
July 26	Julia Blyth	Behind The Scenes At The MMA Natural Science Museum
Aug. 2	Dave Remsen	A Science-Watcher's View Of The Biodiversity Of Nantucket Sound
Aug. 9	NSF-REU Student Presentations	Students Astronomy Research Conducted At MMA
Aug. 16	Dr. Regina Jorgenson, Jascin Finger	The Great American Solar Eclipse of 2017
Aug. 23	Laura Ludwig	Plastic Pollution - A Global Problem With Local Solutions
Aug. 30	Dr. Dick Veit	Using Birding Data In Science
Sept. 6	Dr. Marko Horb	The Crispr Revolution: Applications For Biomedical Research
Sept. 13	Dr. Loretta Roberson	Coral Reefs In A Changing World
Sept. 20	Sarah McGrath	Importance Of The Microbiome: Lessons From The World Of Amphibians

Galaxy of Support

Maria Mitchell

Birthday Donors

Nantucket Bake Shop
Nantucket Culinary Center
Petticoat Row Bakery
Wicked Island Bakery

Birdathon 2017

Kenneth & Cindy Blackshaw
Christopher Cothran
Stacey Edzwald
Ashley Erisman
David Gagnon & Shelley Dresser
Michael Girvin
Henry & Margaret Goldstein
Katharine Robinson Grieder
Tom & Kim Griswold
Richard & Virginia Irwin
John Moy & Sonya Keene
Darren Lucas
Bill & Barbara Maple
Emily Goldstein Murphy
Liz Reinemo
Susan Beegel Tiffney

Astronomy Department

Sponsors

Katherine Babson
Ball Aerospace
Blakeslee & Jeanne Barnes
Giant Magellan Telescope
Patrick McCarthy
John Reed
Shuch Family Foundation
Visco Pumping

Artist-in-Residency

Blue Hills Bank Charitable
Foundation

Barn Owl Box Donors

Abbey Revocable Living Trust
Robi & Ruth Blumenstein
Coleman & Susan Burke
Jeffery & Denise Dickson
John & Margaret Falk
Eric & Lisa Frost
Lawrance & Deborah Gaslow
William & Sarah Goodman
Evan & Cindy Jones
Peter & Maria Kellner
Rick & Sarah Knauff
Susan & William Learnard
Sherry Lowe
Meg Reynolds & William McKee
Toni & Martin McKerrow
Jay & Gretchen Riley
James & Gladys Stedman
George & Ann Thom
Gary & Ellen Tratt
Susan & Bill Untereker
Phillip & Allison Waterman III
Family Fund

Aquarium Matching Fund

Archibald Family Foundation
David & Beverly Barlow
Peter Boyce
Michael & Vivienne Brennan
David & Susan Brownwood
Burwell Family Fund
Congdon & Coleman Insurance
Agency
Brian Costello
Hannah Mosier & Julie Mosier
Crosno
Barbara & James Duffy
Ana & Michael Ericksen
John & Margaret Falk
Andrew & Stehpanie Fellon
Eric & Lisa Frost
Ella George Children's Foundation
Henry & Margaret Goldstein
Gulley Family Fund
Henry & Karoly Gutman
Marion & Jennifer Killion
Judy Lee
Deb & Peter Manus
Andrew McKenna-Foster
Katie & Bill McNabb
Toni & Martin McKerrow
Tamsen Merrill
Michael & Joan Nelson
Ann & Hardy Oliver
Douglas Horst & Maureen Phillips
Gayle & Joseph Santucci
Nancy E. Snell
Vladimir Strelnitski
Ann & Bob Stock
Ned & Merriellou Symes
Diane & Peter Vennema
Philip & Janet Villiotte
Gary & Kathy Walker
Robert & Constance Walkingshaw
Tim & Helene Weld



Donations and Gifts

Mitchell House and the Archives and Special Collections received several gifts this year. They included:

Virginia Andrews – photograph of her mother, Edith Folger Andrews, former Mitchell House curator and MMA Ornithologist, sitting on the front stoop of Mitchell House with Maria Mitchell's Dolland telescope, ca. 1945.

Nancy Giragosian – plants for the Mitchell House garden, front door of 5 Vestal Street.

Nina and Robert Hellman – ten natural science related books from their personal collection for the MMA Special Collection.

Toni B. McKerrow – *Ward's How to Make an Insect Collection* booklet for the MMA Special Collection.



Financial Report

The Nantucket Maria Mitchell Association, Inc.
Statement of Financial Position
December 31, 2017
(With Summarized Audited Financial Information for 2016)

Assets	2017	2016
Cash and cash equivalents	\$ 743,360	\$ 872,830
Inventories	1,318	1,318
Prepaid expenses	7,892	-
Pledges receivable	126,376	155,876
Grants receivable	-	12,350
Other receivables	45,051	143,260
Investments	3,056,066	2,890,421
Real estate interests	235,000	235,000
Remainder interest in property	1,205,568	1,205,568
Property, plant, and equipment, net	<u>5,281,822</u>	<u>5,087,953</u>
	<u>\$ 10,604,576</u>	<u>\$ 10,604,576</u>
Liabilities and Net Assets		
Accounts payable and accrued liabilities	<u>\$ 173,268</u>	<u>\$ 117,937</u>
Net assets		
Unrestricted	\$ 6,660,461	\$ 5,275,633
Temporarily restricted	1,940,085	3,282,367
Permanently restricted	<u>1,928,639</u>	<u>1,928,639</u>
Total net assets	<u>10,529,185</u>	<u>10,486,639</u>
	<u>\$ 10,702,453</u>	<u>\$ 10,604,576</u>

Financial Report

Revenue and Support	Unrestricted	Temporary Unrestricted	Permanently Unrestricted	Totals	
				2017	2016
Programs	\$ 302,421	\$ -	\$ -	\$ 302,421	\$ 308,657
Admissions	55,988	-	-	55,988	61,152
Museum Shop	16,665	-	-	16,665	15,033
Memberships	93,895	-	-	93,895	104,925
Grants	84,895	137,965	-	222,860	236,649
Contributions	320,075	21,272	-	341,347	313,591
Special events	160,027	-	-	160,027	140,958
Investment return designated for operations	142,550	-	-	142,550	162,500
Rental income	70,145	-	-	70,145	59,965
Interest income	2,782	-	-	2,782	3,527
Net assets released from restriction					
Satisfaction of program restrictions	582,635	(582,635)	-	-	-
Total revenue and support	1,832,078	(423,398)		1,408,680	1,406,957
Expenses					
Program services	1,026,070	-	-	1,026,070	952,64
Management and general	391,737	-	-	391,737	365,086
Development	309,420	-	-	309,420	288,958
Total expenses	1,727,227	-	-	1,727,227	1,606,308
Change in net assets from operating activities	104,851	(423,398)	-	(318,547)	(199,351)
Non-operating activities:					
Investment return, less amounts					
designated for operations	346,821	-	-	346,821	50,006
Contributions & grants restricted for capital activities	-	36,722	-	36,772	315,725
Loss on uncollectible pledges	-	(22,500)	-	(22,500)	(485,000)
Donation of remainder interest in property	-	-	-	-	644,839
Net assets released from restriction					
Satisfaction of capital related restrictions	933,156	(933,156)	-	-	-
Change in net assets from non-operating activities	1,279,977	(918,884)	-	361,093	525,570
Change in net assets	1,384,828	(1,342,282)	-	4 2,546	326,219
Net assets, beginning of year	5,275,633	3,282,367	1,928,639	10,486,639	10,160,420
Net assets, end of year	6,660,461	1,940,085	1,928,639	10,529,185	10,486,639

Board, Staff, Interns & Volunteers

Board of Directors

Officers

Deb Manus, President
Helene Weld, First Vice President
Judy MacLeod, Second Vice President
Curt Burwell, Treasurer
Joseph Santucci, Jr., Clerk

Directors

Howard Blitman
Margaret Falk
Chris Griffiths
John Hartner
Judy MacLeod
Malcolm MacNab, M.D., Ph.D.
Toni McKerrow
Michael Nelson
Mary Archibald (Bebe) Poor, D.V.M.
Katherine Rhode, Ph.D.
Brian Sullivan
Edward Symes, III
Jane Tausig

Honorary Members

John Daniels	Eileen McGrath
Daniel Drake	Anne P. Strain
Joan Gulley	Nathaniel Philbrick
Judith Lee	Derek Till

Maria Mitchell Association Staff

Executive Director

David Gagnon

Administration

Finance & Information Administrator
Katharine Robinson Grieder

Administrative & Marketing Assistant
Trinity Foreman

Development

Director of Development & Communication
George Donnelly

*Assistant Director of Development
& Special Projects*
Shelley Dresser

Marketing Intern
Abby Mattern

Astronomy

Director of Astronomy
Regina Jorgenson, Ph.D.

Telescope Engineer and Astronomer
Gary Walker, M.S.

REU Interns
Megan Ayers
Hayley Beltz
Telvin Benjamin
Rachel Bower
Bryan Brzycki
Eydon "Niko" Thomashow

Education

Director of Education
Kim Botelho

Education Assistants
David Ryan
Ken McCormack

Educational Summer Staff
Assistant Camp Director
Ken McCormack

Senior Environmental Educator
Christopher Coomey

Discovery Camp Instructors
Cecilia O'Reilly
Blake Martin
James Austin
Nicholas Brown
John Ammondson
Nicholas Tonti
Stephanie Strifert
Luella Fitzgerald
Doug Craven
Emily Brown
Heyward Lathrop
Siobhan McIlhoney
Kirsten Cusack

Board, Staff, Interns & Volunteers

Mitchell House, Archives & Special Collections

MMA Deputy Director and Mitchell House Curator

Jascin N. Leonardo Finger

Mitchell House Intern

Sabrina Smith

Volunteer Tour Guide

Pat Michaelson, Ph.D.

Student Volunteers

Avery Hylton

Keira Reidy-Dack

Natural Sciences

Director of Natural Science

Emily Goldstein Murphy, Ph.D.

Natural Science Affiliated Staff

Senior Research Fellow

Robert S. Kennedy, Ph.D.

Research Associate

Andrew McKenna-Foster, M.S.

Research Associate, Scallops

Valerie A. Hall, Ph.D.

Natural Science Program Assistant

Virginia Andrews

MMA Natural Science Museum in Hinchman House

Collections Manager

Julia Blyth

Museum Interns

Rachel Althoff

Clare Cunningham

Elisabeth Sorrows

MMA Aquarium Interns

Jack Dubinsky

Kara Falck

Sara Schoen

Celeste Venolia

High School Interns

Gillian Berglund

Rachel Blatt

Lars Caspersen

Chris Falck

Jenna Genthner

Skyler Kardell

Hannah Mosier

Elizabeth Panner

Harry Panner

Elizabeth Pellegrini

Afnaan Qureshi

Daanish Qureshi

Stephanie Ryder

Samantha Walkey

High School Fellows

Daniel Blatt

Grace Manning

Natural Science Adult Volunteers

Kenneth T. Blackshaw

Sarah Bois

Cormac Collier

Zach Dusseau

Seth Englebourg

Dr. Valarie Hall

Kim Horyn

Dr. Margaret Koehm

Scott Leonard

Annie Mendelsohn

Vincent Murphy

Danielle O'Dell

Kelly Omand

Trish Pastuzak

David Ryan

Roberto Santamaria

Jed Williams

Volunteers

Museum and Aquarium Volunteers

Haley Bidwell
Daniel Blatt
Sydney Bramen
Connor Brennan
Cat Buccino
Sarah Caplan
Stefano Chiampo
Rex Dixon
Tori Dixon
Sam Gaynor

Isabella Gaw
Grady Hayes
Claudia Hofford
Sam Hofford
Skyler Kardell
Clyde Kelly
Katherine Kihiczak
Matthew Kihiczak
Gus Lazer
Wyatt Leske
Shea Lyden
Ned Manus
Orion Malfatto-Daily
Ella Mare

Colin McCloskey
Elizabeth Pellegrini
Christopher Petrella
Daanish Qureshi
Afnaan Qureshi
Alisia Russomanno
Roy Ryder
Mia Shyner
Kyle Steele
Matt Tegan
Luke Tegan
Spence Von Summer
Ava Waig
Alex Yuen



Collaborators

The Maria Mitchell Association is proud to establish collaborations with other non-profit organizations and universities in order to offer the best in programs and to conduct research vital to understanding and preserving Nantucket's natural areas and to pursue cutting edge research in astronomy using the MMA's telescopes and leading telescopes around the world and in space.

American Society of Mammalogists
American Arachnology Society
American Association of Variable Star
Observers
Artists Association of Nantucket
Willis Blount, *Ruthie B*
Boston University
Cape Cod Museum of Natural History
City University of New York
Connecticut College
Egan Maritime Institute
European Southern Observatory
International Astronomical Union
Josh Eldridge, "Critter Cruises"
Mark Genthner, *Just Do It, Too*
Harvard-Smithsonian Center for Astrophysics
Harvard University Museum of
Comparative Zoology
The Irish Wildlife Trust
Keck Observatory
Linda Loring Nature Foundation
Long Island University
The Mammal Society (UK)
Massachusetts Audubon Society
Massachusetts Division of Marine Fisheries
Massachusetts Space Grant Consortium
Massachusetts Institute of Technology
Roger Williams Park Zoo
U.S. Fish and Wildlife Service
Massachusetts Division of Marine Fisheries
Nantucket Conservation Foundation
Museum of Comparative Zoology
Jason Bridges, Nantucket Bike Tours
UMass Amherst
Woods Hole Oceanographic Institute
Nantucket Land Council
Town of Nantucket Natural Resources
Department
Monomoy Charters
Montessori Children's House of Nantucket
Nantucket Atheneum
Nantucket Biodiversity Initiative
Nantucket Boys and Girls Club
Nantucket Community Sailing
Nantucket Community Television

Nantucket Conservation Foundation
Nantucket Girl Scouts
Nantucket Historical Association
Nantucket Islands Land Bank
Nantucket Land Council
Nantucket Lighthouse School
Nantucket Marine & Coastal Resources
Department
Nantucket Preservation Trust
Nantucket Public Schools
Nantucket Shellfish Association
Nantucket Shipwreck & Lifesaving Museum
National Collaborative of Women's
History Sites
National Grid
National Museum of Natural History
National Research Council of Canada
Oxbow Associates, Inc.
Pontificia Universidad Católica de Chile
Preservation Institute Nantucket
Prospect Hill Cemetery Association
Purdue University
Roger Williams Park Zoo
Rotary Club of Nantucket
Sconset Trust
Shearwater Excursions
Town of Nantucket
The Trustees of Reservations
Tuckernuck Land Trust
University of Arizona
Universidad Nacional Autónoma de México
University of California, Davis
University of Hawaii
UMass Amherst
UMass Boston Nantucket Field Station
UMass Dartmouth School of Marine
Science & Technology
University of North Carolina at Charlotte
University of Paris, France
University of Rhode Island
University of Western Australia
U.S. Fish and Wildlife Service
The Wildlife Society
Woods Hole Oceanographic Institute
Vassar College
Yale University

Research

2017 Research/Program Collaborators By Subject

American Burying Beetle

Lou Perrotti, Director of Conservation Programs,
Roger Williams Park Zoo

Cynthia Corsair, *U.S. Fish and Wildlife Service*

Anita Barstow, *U.S. Fish and Wildlife Service*

Brandon Quinby, *Purdue University Ph.D. student*

Snakes, Birds

Danielle O'Dell, *Research Technician/Field Supervisor, Nantucket Conservation Foundation*

Scott Smyers, *Environmental Consultant, Oxbow Associates Inc.*

Joe Martinez, *Curatorial Assistant, Museum of Comparative Zoology*

Horseshoe Crabs, Insects, Bats

Dr. Derek Perry, *Massachusetts Division of Marine Fisheries*

Dr. Jennifer Karberg, *Research Supervisor Nantucket Conservation Foundation*

Danielle O'Dell, *Research Technician/Field Supervisor, Nantucket Conservation Foundation*

Other

Jessica Cundiff, *Curatorial Associate/Collections Manager, Museum of Comparative Zoology, Sankaty fossils*

Annie Mendelsohn, *Rotary Club of Nantucket, 5th Grade Tree Program*

Karen Beattie, *Manager of the Department of Science and Stewardship, Nantucket Conservation Foundation*

Jason Bridges, *Nantucket Bike Tours*

Dr. Kevin Esvelt and Joanna Buchthal, *MIT, Mice Against Ticks Project*

Scallops, Shellfish

Dr. Steve Estabrooks, *Scallop Researcher*

Tara M. Riley, *Nantucket Town Shellfish Biologist*

Dr. Valerie Hall, *Scallop Research, MMA*



Green Crabs

Emily Molden, *Nantucket Land Council*

Cormac Collier, *Nantucket Land Council*

Jeff Carlson, *Town of Nantucket Natural Resources Department*

J.C. Johnsen, *Town of Nantucket Natural Resources Department*

Herbarium

Roberta Lombardi, *Herbarium Assistant, UMass Amherst*

Pam Polloni, *Research Assistant, Woods Hole Oceanographic Institute*

Kelly Omand, *Research Technician/Field Supervisor, Nantucket Conservation Foundation*

Publications & Presentations

Astronomy Publications:

Jorgenson, R. A., Monthly astronomy column for *The Inquirer and Mirror*.

Ayers, M., Gezari, S., & Liu, T. "Searching for Signatures of Supermassive Black Hole Binaries." 2018, American Astronomical Society Meeting Abstracts #231, #347.18.

Beltz, H., Jorgenson, R. A., & Rafelski, M. "A High Redshift Survey of Lyman Limit Systems." 2018, American Astronomical Society Meeting Abstracts #231, #357.02.

Benjamin, T., & Brandt, T. J. "Investigating γ -ray Emission from the Westerlund 1 Massive Star Cluster." 2018, American Astronomical Society Meeting Abstracts #231, #344.14.

Bowyer, R. "Mapping Dark Matter in Simulated Galaxy Clusters." 2018, American Astronomical Society Meeting Abstracts #231, #252.10.

Brzycki, B., & Silvia, D. "Observational Tracers of Hot and Cold Gas in Isolated Galaxy Simulations." 2018, American Astronomical Society Meeting Abstracts #231, #149.53.

Drew, P., Strelitski, V., Smith, H. A., Mink, J., Jorgenson, R. A., & O'Meara, J. M., "MWC349A and B Are Not Gravitationally Bound: New Evidence." 2017, *Astrophysical Journal*, 851, 136.

Foord, A., Gueltekin, K., Reynolds, M., Ayers, M., Liu, T., Gezari, S., & Runnoe, J., "A Multiwavelength Analysis of Binary-AGN Candidate PSO J334.2028+01.4075." 2017, *Astrophysical Journal*, 851, 106.

Thomashow, E., Jorgenson, R. A., Strelitski, V., Walker, G., & Maria Mitchell Observatory (MMO) Research Experiences for Undergraduate (REU) Interns, "Two- Decade Monitoring of MWC349 in Optical and Radio: New Results." 2018, American Astronomical Society Meeting Abstracts #231, #136.10.

Astronomy Presentations:

Space Telescope Science Institute Spring Symposium "Lifecycles of Metals Throughout the Universe," April 2017.

Cosmopolitan Club Presentation, Nantucket Yacht Club: "Research at MMO and Understanding Solar Eclipses," July 2017.

Tuckernuck Land Trust Summer Program Presentation: "Stargazer's Delight," August 2017.

Jascin Leonardo Finger

Publications:

"Maria Mitchell's Attic" blog for MMA

Presentations:

Nantucket Book Festival "Author's Tent," June 2017.

Nantucket Lightship Basket Museum, lecture on Nantucket women.

MMA Science Lecture Series: "The Great American Eclipse" a talk with Regina Jorgenson, Ph.D., MMA Director of Astronomy.

Nantucket High School Nantucket History Class presentation on Nantucket Women.

Charlemont Academy "Maria Mitchell and the MMA."





4 Vestal Street
Nantucket, MA 02554
508-228-9198
mariamitchell.org