

2009 Ohio Asphalt Paving Conference

Warm Mix Asphalt

2008 ODOT Field Trials

Ohio Department of Transportation



Warm Mix Asphalt

2008 ODOT Field Trials

What is it?



2009 Ohio Asphalt Paving Conference



Warm Mix Asphalt

2008 ODOT Field Trials

Why?

- Reduce production and laydown temperatures
- Reduce emissions
- Reduce energy costs
- Reduce aging of binder
- Other Possible Benefits:
 - Cool weather paving (extend season)
 - Compaction aid for stiff mixes

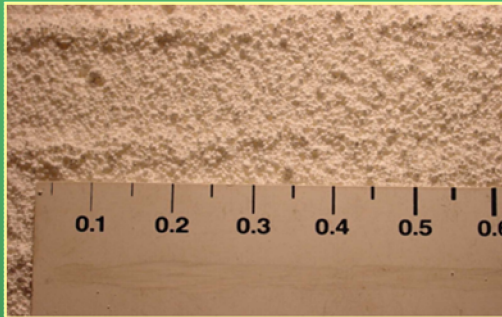
2009 Ohio Asphalt Paving Conference



Warm Mix Asphalt

2008 ODOT Field Trials

WMA Technologies



- WAM Foam
- Zeolite
- Sasobit
- Evotherm
- Low Energy Asphalt
- FOAMING



2009 Ohio Asphalt Paving Conference



Warm Mix Asphalt

2008 ODOT Field Trials

Why Foaming?

- Improved Workability / Coating
- No Smoke , Less Smell
- Longer Life Pavement
- 11% Less Plant Fuel
- 11% Higher Production
- Some Decrease in Cost

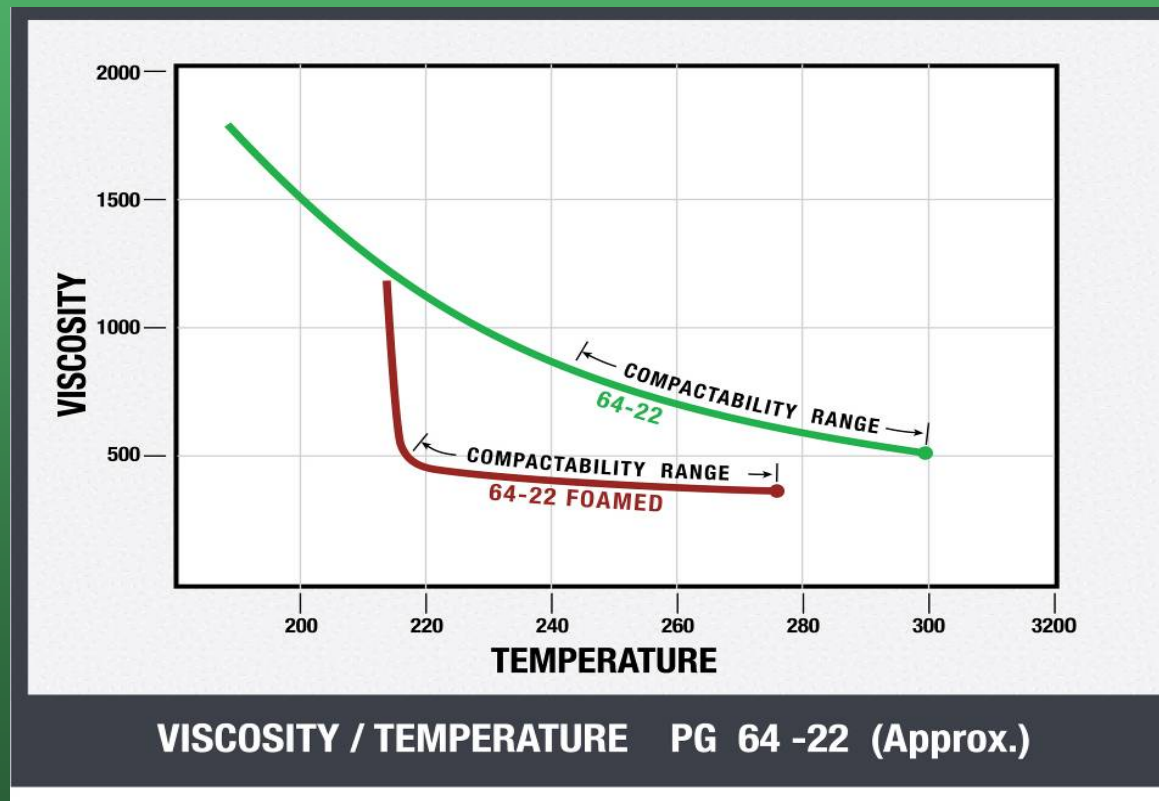
2009 Ohio Asphalt Paving Conference



Warm Mix Asphalt

2008 ODOT Field Trials

Why Foaming?



2009 Ohio Asphalt Paving Conference



Warm Mix Asphalt

2008 ODOT Field Trials

Unknowns with Foaming

- Production limitations
- Several different foam technologies
- Emissions
- Mix life
- Cost
- Quality Control
- Placement

2009 Ohio Asphalt Paving Conference

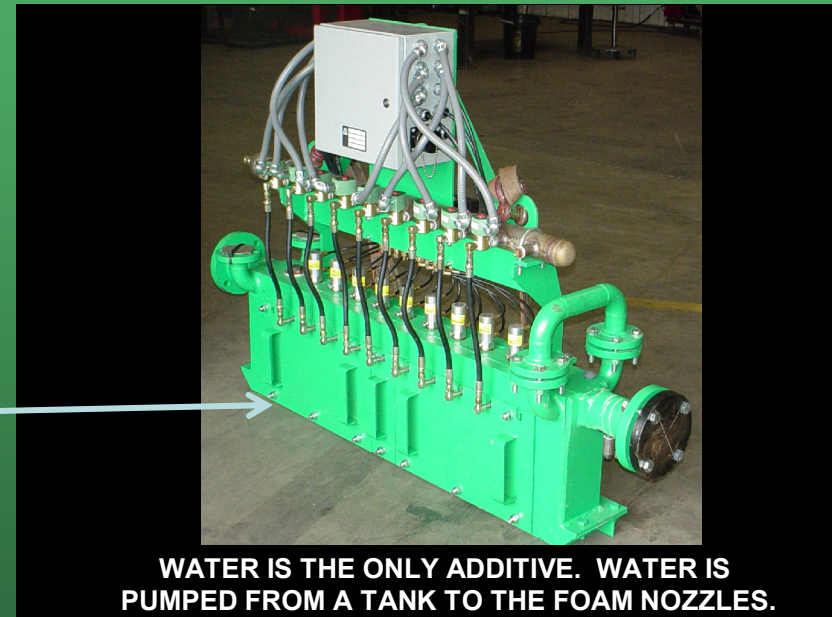


Warm Mix Asphalt

2008 ODOT Field Trials

Foaming Technologies

Astec



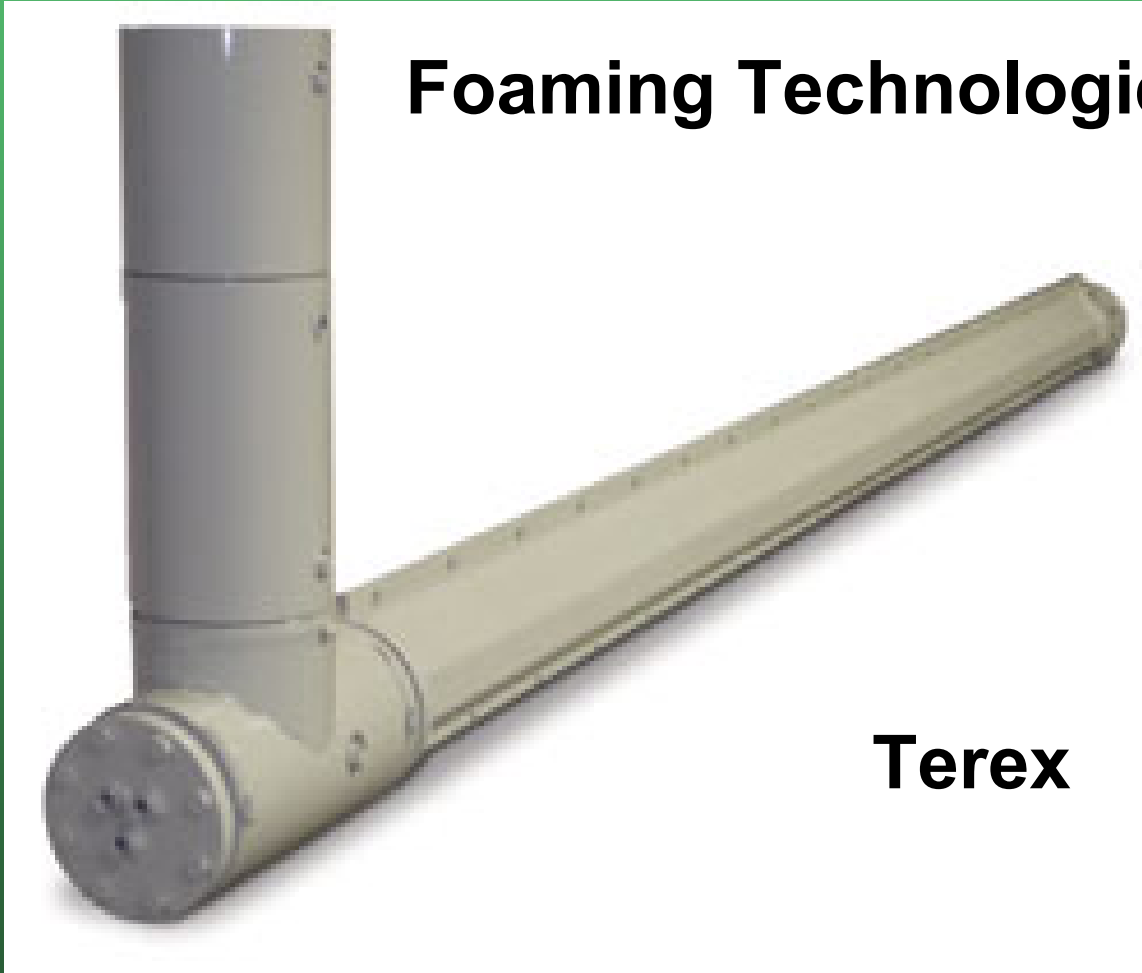
2009 Ohio Asphalt Paving Conference



Warm Mix Asphalt

2008 ODOT Field Trials

Foaming Technologies



Terex

2009 Ohio Asphalt Paving Conference



Warm Mix Asphalt

2008 ODOT Field Trials

Foaming Technologies

Gencor



2009 Ohio Asphalt Paving Conference

Warm Mix Asphalt

2008 ODOT Field Trials

How much water?

About 1% H₂O of liquid AC by weight.

1 ton mix – 2,000 lb.

5.3% AC liquid – 106 lb.

1 lb H₂O

Volume of liquid – 0.016 cu. ft.

1 lb. H₂O when converted to steam = 30 cu. ft.

Expansion = $30/0.016 = 1875$



Warm Mix Asphalt

2008 ODOT Field Trials

Projects with Water Injection for Foaming

In 2008 6 projects were sold to:

- 1) Determine asphalt plant emissions data
- 2) Create projects with control sections of equivalent HMA mixes to compare performance and laydown.
- 3) On some, sell as alternate to determine if realistic cost savings.



Warm Mix Asphalt

2008 ODOT Field Trials

Projects with Water Injection for Foaming

One additional project was let as an alternate but was awarded as a hot mix due to the way multiple contractors bid the job for mix placement vs. mix producer.

One existing project not sold as WMA had it's 301 base mix change ordered to WMA at a savings.

Total WMA tonnage – approx. 50,000 tons in 2008



Warm Mix Asphalt

2008 ODOT Field Trials

Projects with Water Injection for Foaming

Dist	PID	Section	Length	Sale	Contractor	Stack Test
4	77838	POR-224-13.42	4.9 mi	6/4/08	Shelly	Yes
4	25554	SUM-303-8.14	2.4 mi	6/4/08	Karvo	
5	22640	LIC-40-0.58	5.7 Lmi	change order	Shelly	
6	78156	PIC-62-0.00	7.64 mi	5/21/08	Kokosing	Yes
7	77424	DAR/MIA-49-0.00	9.75 mi	5/21/08	Valley/ Walls	Yes
8	25378	CLE-132-0.00	12.43 mi	6/4/08	Barrett	Yes
8	83808	HAM-50		change order	Valley	
12	22896	CUY-176-12.76	0.59 mi	7/23/08	Karvo	

2009 Ohio Asphalt Paving Conference



Warm Mix Asphalt

Projects with Water Injection for Foaming

Dist	Contr.	Section	Project Cost	Item	Cubic Yards
4	Shelly	POR-224-13.42	1,411,473	Mill 1.5, place 1.75 446-2, 64-22	2512 WMA/ 1897 HMA
				Place 1.25 446-1, 70-22M	1539 WMA/ 1840 HMA
4	Karvo	SUM-303-8.14	962,912	Mill 1.5, place 1.5 448-1 70-22M	1835 WMA/ 937 HMA
5	Shelly	LIC-40-0.58	- 3341	301 base only for WMA	6683 WMA
6	Kokosing	PIC-62-0.00	934,073	Mill 1.5, place 1.5 446-1, 64-22	2665 HMA/ 2928 WMA
7	Valley	DAR/MIA-49-0.00	1,662,762	Place 0.5 448-1 64-22	1222 WMA
				Place 1.5 448-1H, 70-22M	3433 HMA/ 3667 WMA
8	Barrett	CLE-132-0.00	2,263,252	Mill 2.0, place 1.75 446-2	3713 total
				Place 1.5 446-1H 70-22M	3283 total
8	Valley	HAM-50		Place 1.5 448-1H 70-22M	8974 WMA
12	Karvo	CUY-176-12.76	255,843	Mill 0.5, place 1.0 424-B	1179 WMA

Warm Mix Asphalt

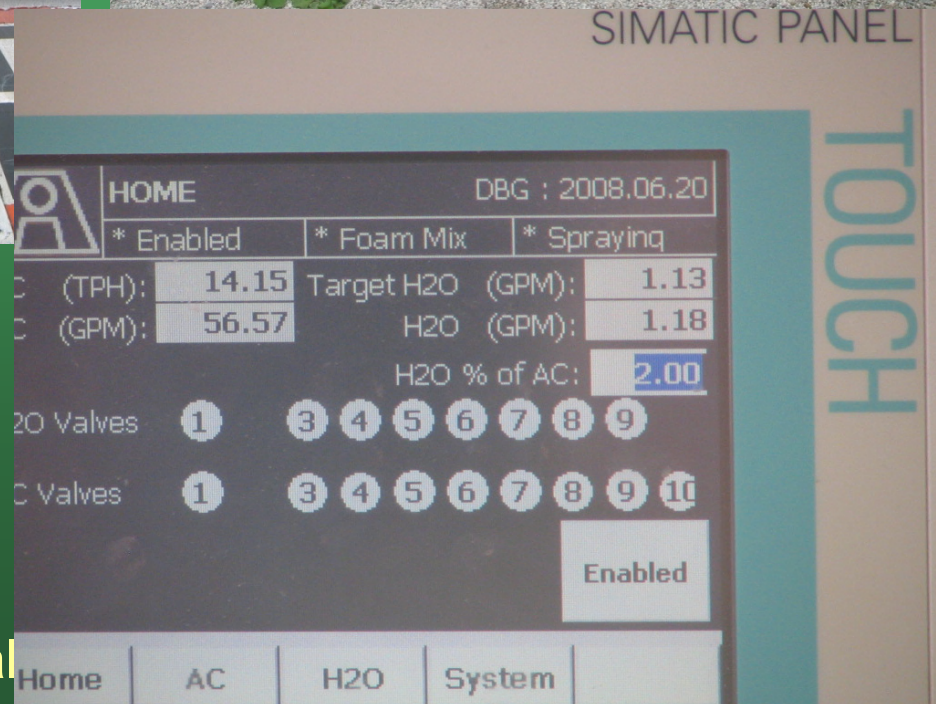
2008 ODOT Field Trials

General Project Requirements:

- Project split HMA/WMA with same JMF
- When stack test required: NO_x, CO₂ and VOC
- Use Astec multi point water injection
- Perform QC lab compaction at 25 F less than design
- Field compact as needed for density measure
- Perform T 283 moisture damage testing each day
- Collect all QC, stack and fuel data and report to ODOT



POR-224



2009 Ohio Asphalt

POR-224



2009 Ohio Asphalt Pa

POR-224



Conference



POR-224



ference



SUM-303



SUM-303



2009 Ohio Asp

PIC-62



Conference



PIC-62



Paving Conference



DAR/MIA- 49



DAR/MIA- 49



07/29/2008

DAR/MIA- 49



DAR/MIA- 49



ng Conference





Temp	% Density	Pay Factor
277	90.0	0.80
280	93.0	1.00
276	92.8	1.00
296	93.7	1.04

CUY- 176
424 w/ PG76-22M

2009 Ohio Asphalt Pa



2008 Warm Mix Asphalt

Fuel and Emissions

POR-224 Summary of Fuel and Emissions

	T 1 HMA	T 1 WMA	Percent Reduction	T 2 HMA	T 2 WMA	Percent Reduction
Production tons/hr	430	330		452	478	
Plant Fuel Usage gal/ton	2.08	1.71	17.8	1.77	1.57	11.3
Temp °F	290	261		298	260	
NOx lb/hr	31.97	19.10	40	30.46	27.33	10
CO ₂ lb/hr	16599	11378	31	17258	15253	12
VOC lb/hr	8.7	6.39	27	6.92	6.54	5

2009 Ohio Asphalt Paving Conference



2008 Warm Mix Asphalt

Fuel and Emissions

DAR/MIA-49 Summary of Fuel and Emissions

	Hot Mix	Warm Mix	Percent Reduction
Production tons/ hr	301.07	297.48	
Plant Fuel Usage gal/ton	1.64	1.40	14.8
Temp °F	330	295	
NOx lb/hr	21.04	17.65	16.1
CO ₂ lb/hr	14,830	12,789	13.8
VOC lb/hr	5.9	4.0	31.9

2009 Ohio Asphalt Paving Conference



Thank You!

david.powers@dot.state.oh.us

Office of Materials Management

Ohio DOT (dot.state.oh.us)

614-275-1387

2009 Ohio Asphalt Paving Conference

