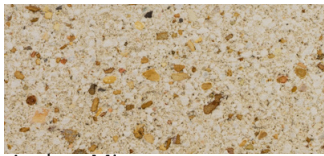
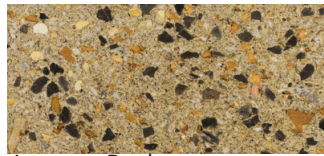


# GROUND FACE

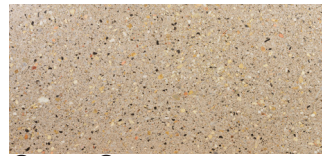
COLORS SHOULD BE CHOSEN FROM ACTUAL SAMPLES



Amber Mist



Autumn Rush



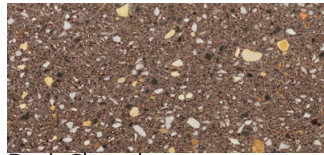
Canary Cream



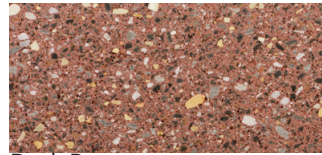
Castille White



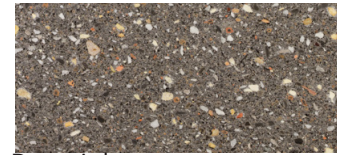
Champagne Cream



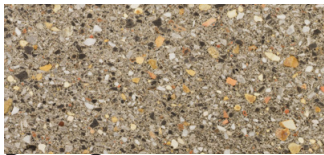
Dark Chocolate



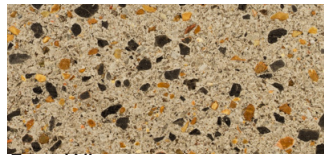
Dark Rust



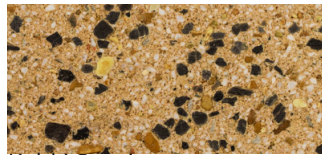
Deep Ash



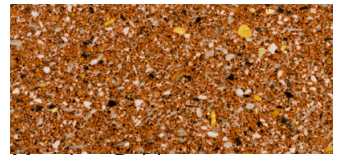
Dorset Grey



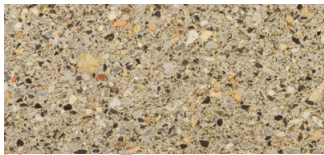
Ecru Wisp



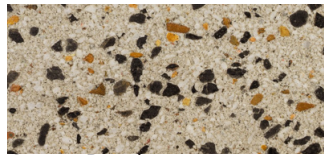
Kahki Sunrise



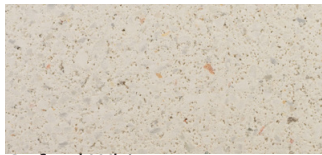
Messina Gold



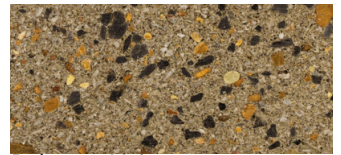
Moroccan Tan



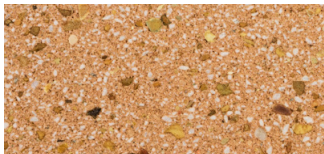
Ocean Pearl



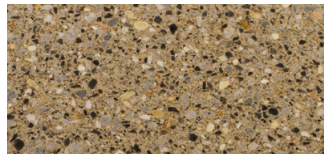
Oxford White



Palermo Vein



Pecos Cream



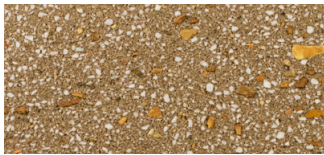
Provencal Yellow



Russet Grain



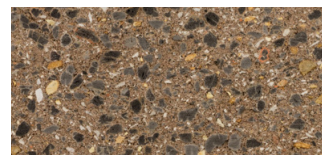
Sable Stone



Saddle Beige



Smokey Sand



Umber Wheat



Vintage Granite

## A DURABLE FINISH FOR ALL APPLICATIONS

1. An improved smoother finish
2. Excellent adhesion and gloss retention
3. Finish is a clear high gloss
4. A penetrating sealer
5. The face treatment "breathes"
6. Excellent UV stability
7. Enhances the rainwater resistance provided by the integral water resistant admix incorporated within the block mix