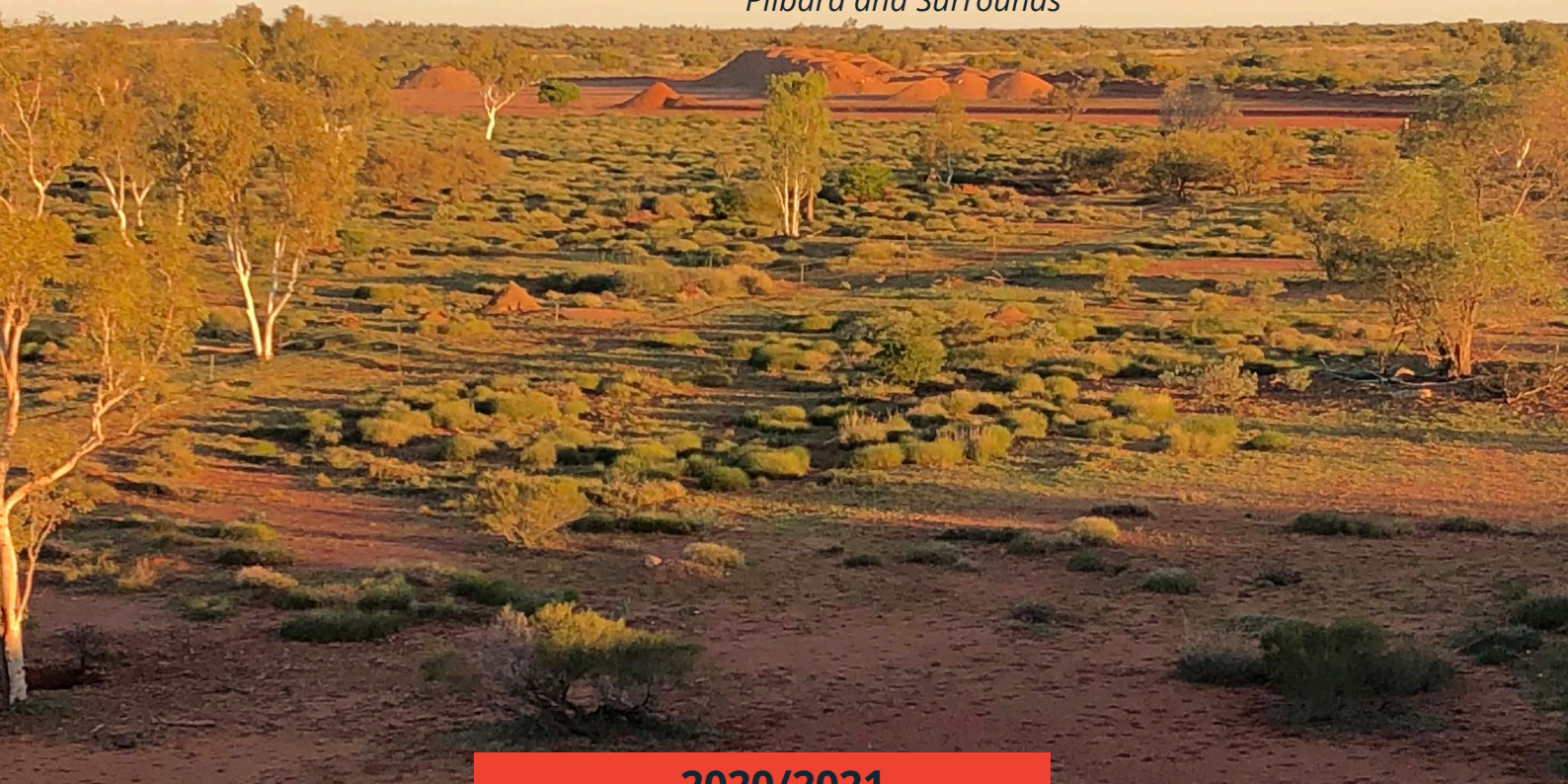




Barradale Sands Pty Ltd

BARRADALE SANDS **CAPABILITY STATEMENT**

*Quality Natural Sand Suppliers to the
Pilbara and Surrounds*



2020/2021



TABLE OF CONTENTS

INTRODUCTION & OUR COMPANY

What You Need **To Know About Us** 2

DEVELOPMENT

Company **Vision & Mission** 2

OUR SITE

Where We Are **Location & Lease Map** 3

THE WHAT, WHY AND HOW

Our Product, Why Choose Quality, **How It's Used** 4

COMPETENCY & STRUCTURE

How We Work with our **Contractor Network** 5

OUR HISTORY & MANAGEMENT

Our Largest Project to Date, **About Our Director** 6

GOVERNANCE & RESPONSIBILITY

How We Work with our Clients, Community and **Environment** 7

FIND OUT MORE

How to Get In Touch **Contact Us** 8

The Details **ABN & Licence Details** 8

INTRODUCTION

BARRADALE SANDS **AT A GLANCE**

Established 2015

WHAT YOU NEED TO KNOW ABOUT US

The Barradale Sands mine was established in 2015 by Company Director John Boyle, with the intent to provide a source of quality natural sand for mining and construction purposes, in a location convenient to the resources and construction sectors working in the Pilbara and surrounds.

Located seventy kilometres south of Nanuturra in the West Pilbara region, we have established a network of local contract suppliers to ensure our operations run smoothly. Our contractors include; Drilline Civil and Haulage (based in Onslow and Newman) for extraction, screening, and earthworks, Binbirri Contracting (based in Port Hedland) for transportation, Austwide Mining for legal and compliance matters, and quality testing conducted by SGS in Karratha.

We pride ourselves on extensive environmental protection procedures which include the ongoing rehabilitation of our mining areas, with daily restoration after sand extraction. We also conduct regular testing to ensure the quality of our product, with composition testing conducted to the requirements of each customer or project.

Barradale Sands acknowledges the Thalanyji people as the traditional landowners of our mine location. And we have worked closely with them to ensure that all activities conducted onsite are done with their blessing and following their heritage.

We also aim to work with Aboriginal-owned contract suppliers, and our ongoing relationship with Binbirri Contracting has developed substantial employment opportunities for Aboriginal workers to benefit from the Barradale Sands mine operation.

In 2017 we completed our largest project to date, supplying 13,000 tonnes of bedding sand for Stage 2 of the Onslow Power Project. With our product used in the construction of the foundation for the solar farm component of the project. This project was a significant demonstration of the strength of our management, administration, and product, as well as the capability of our contract suppliers to deliver quality materials that met the requirements and timelines of a large-scale construction project.

Our VISION

Barradale Sands will be known as a capable and reliable local product supplier. Who are also diligent protectors of our natural environment and have a strong collaboration with our traditional landowners.

Our MISSION

To be the supplier of choice for quality natural sand in the Pilbara and surrounds, with an excellent administrative and supply chain. And to deliver a product that exceeds the quality and delivery requirements of the mining and construction sectors.

BARRADALE SANDS **OUR MINE SITE**

Where We Are

LOCATION & LEASE MAP

The Barradale Sands mine site is 550 acres located 70 kilometres south of Nanuturra. We are perfectly placed to supply and deliver our product to the Pilbara and surrounds.

We Are Here

 Barradale Sands

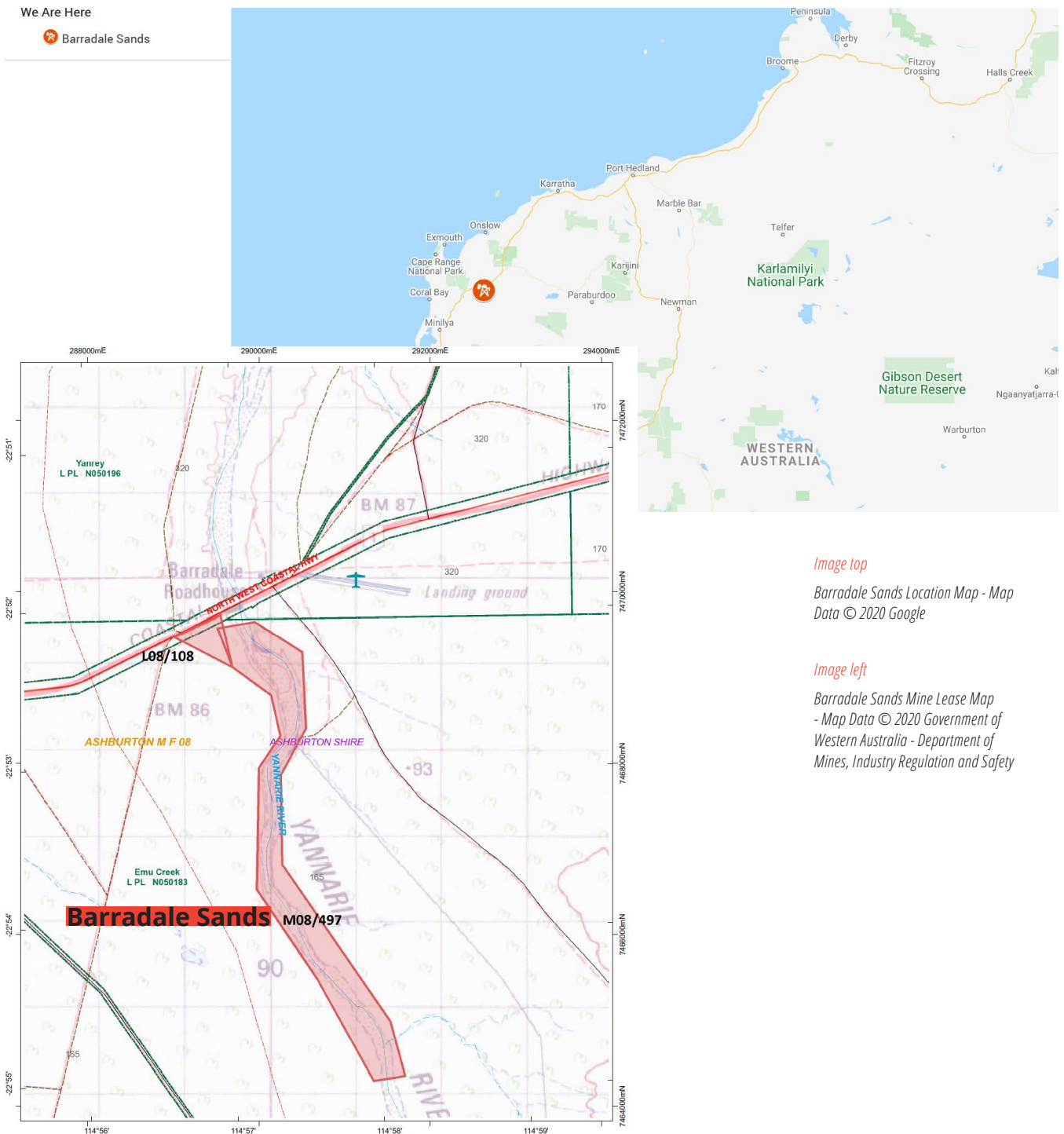


Image top

Barradale Sands Location Map - Map Data © 2020 Google

Image left

Barradale Sands Mine Lease Map - Map Data © 2020 Government of Western Australia - Department of Mines, Industry Regulation and Safety

OUR PRODUCT COMPOSITION AND USAGE

Natural and chiefly coarse grained Lithic Quartzose Sand, with an underprocessed alluvial provenance

Barradale Sands provide high-quality natural sand, and have performed extensive material testing to ensure purity of materials and low electrical conductivity. We offer two distinct products depending on the planned usage, composition and testing required.

TYPE A1

100% PASSING 4.75MM

A1

Cement sand and high-quality bedding sand, low electrical conductivity.

BEDDING MATERIAL

COST EFFICIENT

BMA

Can be screened to your specification/size and is a cost efficient product as it is only screened once.

PROPERTIES & USAGE REPORTS

NOTE: PROPERTIES FROM MOST RECENT PROJECT TESTING

PRIMARY MINERAL COMPOSITION



61% QUARTZ

Singular clear unstrained to mildly strained grains. Rare zircon, opaque and iron oxide inclusions

17% META-SEDIMENTARY LITHIC GRAINS

Occurring as quartzite/meta-sandstone or derived polycrystalline vein fragments. Including pervasive iron oxide staining & remnant ferruginous cements (3%)

13% FELDSPARS

Ferruginised and epidotised plagioclase (10%) & argillised K-feldspars/microcline (3%)

2%

IGNEOUS LITHIC GRAINS

1%

AMPHIBOLE

1%

EPIDOTE

trace%

ZIRCON

trace%

APATITE

CONSTRUCTION - LOW RISK PROFILE FOR USES

FINE AGGREGATE FOR CONCRETE

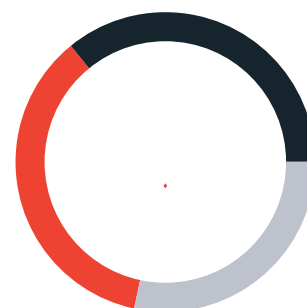
Low weak/secondary mineral count chiefly locked within the crystal fabric of the rock and unlikely to result in increased water demand in concrete

UNBOUND PAVEMENTS

Suitable high strength, hard and durable material

GRADED ASPHALT AGGREGATE

Suitable high strength, hard and durable material



INDUSTRIAL - LOW RISK PROFILE FOR USES

BEDDING SAND FOR STRUCTURES

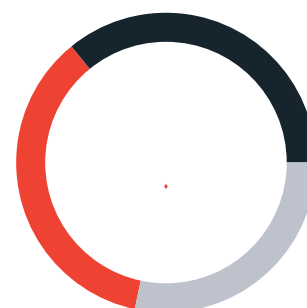
Suitable hardness, strength and durability for use in earthworks for tank and building foundations

BEDDING FOR PIPELINES & ELECTRICAL

Low electrical and thermal conductivity ratings

COVER DRILLING & BLASTING

Suitable high strength, hard and durable material



OUR CONTRACTOR NETWORK

Professional Service From Order to Delivery

Drilline Civil and Haulage

Drilline Civil and Haulage is a Pilbara based business with operations in Onslow and Newman. Drilline specialises in bulk earthworks and sand mining, making them the perfect contract service for Barradale Sands to employ onsite. Established in 2012, Drilline has provided all sand mining services and equipment to the Barradale Sands mine using their specialised heavy machinery to extract and screen our quality materials, and conduct earthworks to rehabilitate excavated areas. With a knowledgeable, well trained and motivated workforce, they deliver high quality and reliable service. Drilline hold the following certifications: ISO 9001:2015 (Quality Management Systems), AS/NZS 4801:2001 (OHS Management Systems), and ISO 14001:2015 (Environmental Management Systems).

Binbirri Contracting

Binbirri Contracting Pty Ltd is a civil and mining contractor who has become a very successful Pilbara Aboriginal business since established in 2011. With an experienced team, Binbirri has developed a robust approach to business, completing all projects safely and professionally, and delivering solutions that both meet and exceed the expectations of their clients. 63% of their workforce are Aboriginal people, working across all projects, inclusive of management positions. They are committed to promoting equality of opportunity, treating employees with respect, and ensuring they are valued based on their skills, talents and expertise. Binbirri has provided all haulage and delivery services of Barradale Sands' products since the establishment of the mine, and possess the necessary permits and certifications to deliver onsite to mining and construction operations in the Pilbara.

Austwide Mining

Austwide Mining provides Barradale Sands with Mining Tenement management and services and has been providing expert advice and assistance in this area for over 20 years. They ensure that Barradale Sands' legal and governance requirements are met and compile all necessary reports and documentation.

SGS

SGS is the world's leading inspection, verification, testing and certification company, and seen as the global benchmark for quality and integrity. With a local Karratha office, they can deliver prompt test results for Barradale Sands ensuring materials meet the requirements of each project/order as required by our clients.

OUR PROCESSES

How We Work

1

PRODUCT

SOURCED ONSITE @ BARRADALE SANDS

2

EXTRACTION, SCREENING & EARTHWORKS

COMPLETED BY DRILLINE CIVIL & HAULAGE

3

TRANSPORTATION

COMPLETED BY BINBIRRI CONTRACTORS

4

PRODUCT DELIVERY TO CLIENT

COMPLETED BY BINBIRRI CONTRACTORS

2.1

COMPLIANCE & QUALITY TESTING

COMPLETED BY SGS

2.2

DAILY SITE REHABILITATION

COMPLETED AFTER EXTRACTION

OUR PRODUCT AT WORK **THE ONSLOW POWER PROJECT**

In 2017 Barradale Sands supplied 13,000 tonnes of bedding sand for stage 2 of The Onslow Power Project. This was a significant demonstration of our service and product capabilities, with materials supplied to fit the needs of Downer Group, who were in charge of construction of the foundation for the Solar Farm component of the project.

"Drilline Civil and Haulage have been working with Barradale Sands as a material supplier since their establishment in 2015. They have been a consistently dependable supplier of high-quality natural sand and have been able to accommodate our requirements at all times. When we were sourcing materials for the Onslow Power Project, which was a large scale project, we needed a supplier who could deliver quality materials at high volume. Barradale Sands fit these requirements perfectly!"
Ryan Croll - Drilline Civil & Haulage

**ABOUT THE
DIRECTOR**

John Boyle

John Boyle lives local to the Barradale Mine site and has worked and lived in the Pilbara region for over ten years. He has several years experience in pastoral work, has delivered contracting services to mining and industry sites in the area, and is a qualified tradesperson. John has extensive earthmoving, machine operation and supervisory experience, including working as a crew supervisor for Binbirri Contracting. John has a hands-on approach to all aspects of the Barradale Sands operations, working closely with our contract suppliers to ensure that all processes run smoothly. John calls the Pilbara home and wants to preserve and protect the area for the benefit of both his children and all future generations.



GOVERNANCE & RESPONSIBILITY

Photo top

Rehabilitated area of the river at Barradale Mine after rain

Photo bottom left

Sand extraction

Photo bottom right

Sand loading process

OUR VALUES

QUALITY & SERVICE

Premium Services

We understand that every client and project has different requirements in regards to testing, material composition, and thermal/electroconductive qualities of the natural sand supplied. We establish this with you at contract start and have the procedures in place to ensure that we meet your needs. When you work with Barradale Sands, you will be in close contact with the Director of the company, who provides excellent service, with operations that run to your timeframes and specifications.

SAFETY

Team of Experts

Barradale Sands put extensive research into creating our contract supplier network. We have ensured that we have affiliated ourselves with contractors who value safety as a top priority in their operations and have all of the necessary OHS policies and training in place, as well as the safety certifications relevant to their industry. All stages of our process from material extraction to final order delivery uphold the highest safety standards.

COMMUNITY

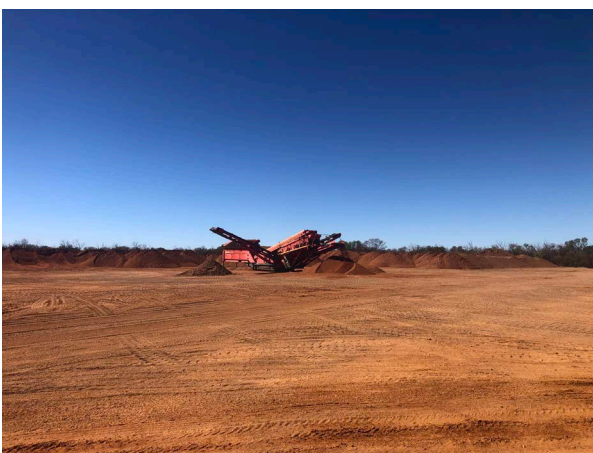
Working with our Traditional Land Owners

The Thalanyji people are the traditional owners of the area on which Barradale Sands is located. Upon establishing our mine lease, we have determined a royalty structure for the Buurabalayji Thalanyji Aboriginal Corporation, which ensures they received a percentage of all contracted funds generated from the mine. The entire community is welcome to utilise non-active areas of the mine for recreation. And they frequently visit our caretaker's residence for social and business purposes. With close collaboration for the community on our operations, we ensure we are acting following their wishes.

ENVIRONMENT

Protect the Future

"If we look after the country, it is going to look after us in turn" – John Boyle, Barradale Sands Director & Owner. We see ourselves as the caretakers of this land and treat the environment with the utmost respect. We aim to preserve the natural ecology and beauty of the area. We have put in place measures for retention and ongoing rehabilitation of the local flora and fauna. These include policies on limiting vegetation removal, ground smoothing and levelling of the riverbanks to allow natural water flow, and planning of extraction which prevent any erosion.





BARRADALE SANDS

PO Box 719
Carnarvon WA 6701

ABN 306 06 11 43 63

ACN 606 114 363

Mine Tenement M08/497

L08/108

Phone

0416342 053

Email

john@barradalesands.com.au

Website

www.barradalesands.com.au



Barradale Sands Pty Ltd